

街区略図

工区

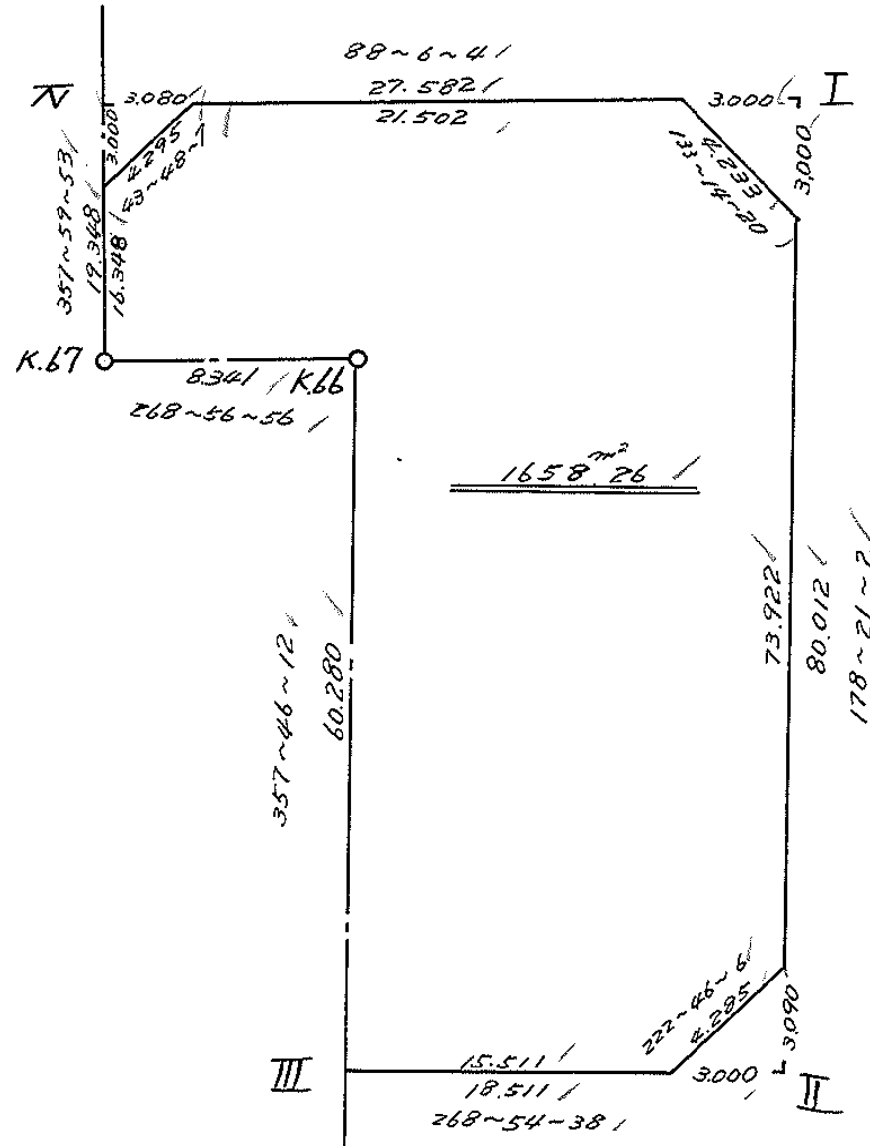
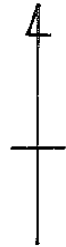
ブロック

20

記入者



点検者



面積計算書

工
区

ブ
ロ
ック

20

計
算
者



精
算
者



備
考

全体

点	①	②	③	④	⑤	⑥	③ × ⑤		② × ⑥	
	X	X-(定数)	X _{n-1} -X _{n+1}	Y	Y-(定数)	Y _{n-1} -Y _{n+1}	+	-	+	-
I	149 552.904	108.500 52.904	+ 79.065	401 206.931	10,200 6.931	- 29.870			547.999515	1,580.242480
II	632.883	132.883	+ 80.331	204.628	4.628	+ 16.205			371.771868	2,153.369015
III	633.235	133.235	- 59.882	223.136	23.136	+ 20.854	1,385.429952			2,778.482690
K.66	573.001	73.001	- 60.081	225.482	25.482	+ 10.686	1,530.984042			780.088686
K.67	573.154	73.154	- 19.183	233.822	33.822	+ 9.016	648.807426			659.556464
IV	553.818	53.818	- 20.250	234.498	34.498	- 26.891	698.584500		1,447.219838	
							4,263.805920	919.771383	3,027.462318	6,371.496855
							3,344.034537			3,344.034537
										$\times \frac{1}{2} = 1,672.0172685$
				I	II	IV				
				1.672.01	(4.50 + 4.63 + 4.62)	= 1658.26				
				"						
				13.75						

画地計算

画地略図

工区

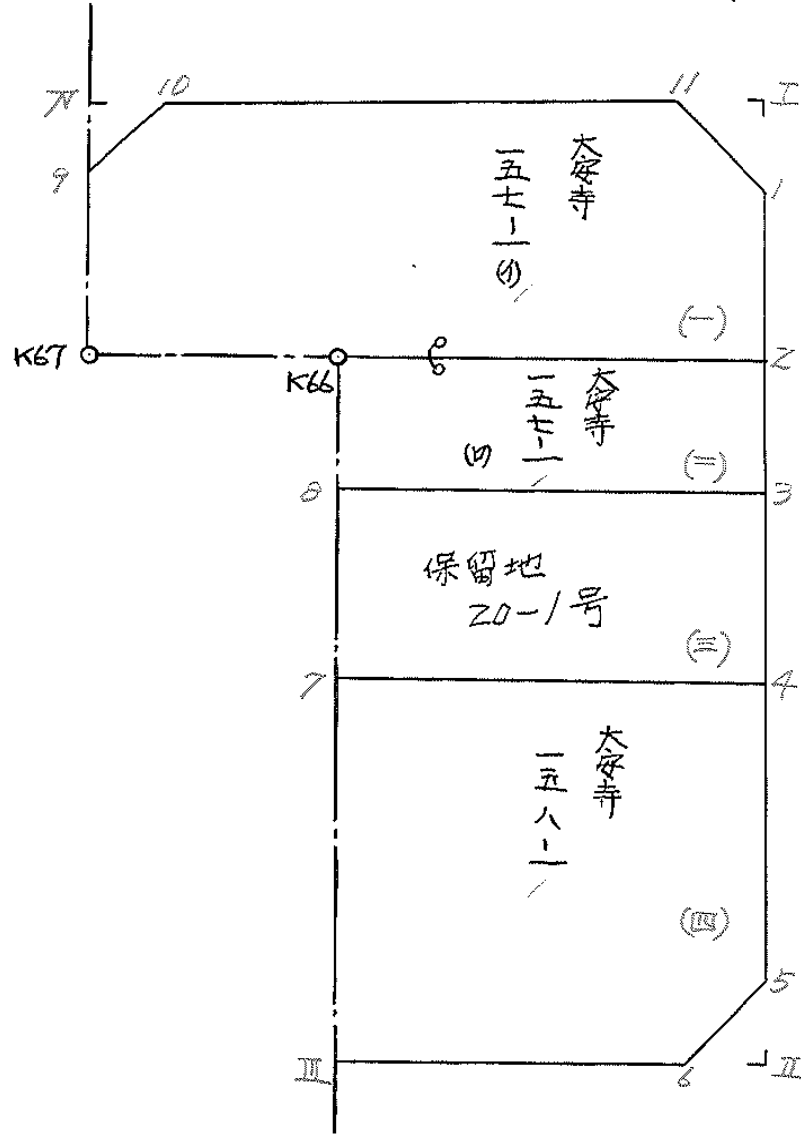
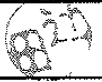
ブロック

20

記入者



点検者



面積計算書

工区

プロック

20

計算者

徳山

精算者

823

備考

大安寺
 (-) 157-1(1) (=) 157-1(10)

点	①	②	③	④	⑤	⑥	③ × ⑤		② × ⑥			
	X	X-(定数)	X _{n-1} -X _{n+1}	Y	Y-(定数)	Y _{n-1} -Y _{n+1}	+	-	+	-		
(-) 1	-148.1 555.903	-148.550 5.903	+ 19.449	-40.1 206.845	-40.200 6.845	- 3.561			133.128405	21.020583		
2	572.452	22.452	+ 17.098	206.368	6.368	+ 18.637			108.880064	418.437924		
K66	573.001	23.001	+ 0.702	225.482	25.482	+ 27.454			17.888364	631.469454		
K67	573.154	23.154	- 16.185	233.822	33.822	+ 8.911	547.409070			206.325294		
9	556.816	6.816	- 19.438	234.393	34.393	- 2.402	668.531134			16.372032		
10	553.716	3.716	- 3.813	231.420	31.420	- 24.664	119.804460			90.908224		
11	553.003	3.003	+ 2.187	209.929	9.929	- 24.575			21.714723	73.798725		
									1335.744664	281.611556	202.099560	1256.232672
									1054.133108			1054.133108
									x 1/2 = 527.066554			
(-) 2	-148.1 572.452	-148.570 2.452	+ 7.446	-40.1 206.368	-40.200 6.368	- 19.344			47.416128	47.431488		
3	520.447	10.447	+ 8.553	206.138	6.138	+ 18.802			52.498314	196.424494		
8	581.005	11.005	- 7.446	225.170	25.170	+ 19.344	187.415820			212.880720		
K66	573.001	3.001	- 8.553	225.482	25.482	- 18.802	217.947546			56.424802		
									405.363366	99.914442	103.856290	409.305214
									305.448924			305.448924
									x 1/2 = 152.724462			

面積計算書

工区

ブロック

20

計算者



精算者



備考

(E)保20-1号(四) 158-1

大安寺

点	①	②	③	④	⑤	⑥	③ × ⑤		② × ⑥		
	X	X-(定数)	X _{n-1} -X _{n+1}	Y	Y-(定数)	Y _{n-1} -Y _{n+1}	+	-	+	-	
III	-148, 580.447	-148,580- 0.447	+15.501	-40, 206.138	-40,200- 6.138	-19.495			95.145138	8.714265	
4	596.506	16.506	+16.620	205.675	5.675	+18.406			94.318500		303.809436
7	597.067	17.067	-15.501	224.544	24.544	+19.495	380.451544				332.721165
8	581.005	1.005	-16.620	225.170	25.170	-18.406	418.325400			18.498030	
							798.781944	189.463638	27.212295	636.530601	
							609.318306				609.318306
							$\times \frac{1}{2} = 304.659153$				
IV	-148, 596.526	-148,500- 96.526	+32.727	-40, 205.675	-40,200- 5.675	-19.827			185.725725	1913.424462	
5	629.794	129.794	+36.434	204.717	4.717	+1.952			171.859178		253.357888
6	632.940	132.940	+3.441	207.627	7.627	+18.419			26.244507		2448.621860
7	633.235	133.235	-35.873	223.136	23.136	+16.917	829.957728				2,253.936495
	597.067	97.067	-36.729	224.544	24.544	-17.461	901.476576			1,694.886889	
							1731.434304	383.829410	3,608.311349	4,955.916243	
							1,347.604894				1,347.604894
							$\times \frac{1}{2} = 673.802447$				

面積計算書

工区

ブロック

20

計算者



精算者



備考

開切 I II IV

点	①	②	③	④	⑤	⑥	③ × ⑤		② × ⑥		
	X	X-(定数)	X _{n-1} -X _{n+1}	Y	Y-(定数)	Y _{n-1} -Y _{n+1}	+	-	+	-	
I	148, 552.904	148,550- 2.904	+ 2.900	40, 206.931	40,200- 6.931	- 3.084			20.099900	8.955936	
I	555.903	5.903	+ 0.099	206.845	6.845	+ 2.998			0.677655		17.697194
II	553.003	3.003	- 2.999	209.929	9.929	+ 0.086	29.777071				0.258258
							29.777071	20.777555	8.955936	17.955452	
							8.999516				8.999516
									$x\frac{1}{2} = 4.499758$	$= 4.50$	
II	148, 629.794	148,629- 0.794	- 0.057	40, 204.717	40,204- 0.717	- 2.999	0.040869			2.381206	
II	632.883	3.883	+ 3.146	204.628	0.628	+ 2.910			1.975688		11.299530
6	632.940	3.940	- 3.089	207.627	3.627	+ 0.089	11.203803				0.350660
							11.244672	1.975688	2.381206	11.650190	
							9.268984				9.268984
									$x\frac{1}{2} = 4.634492$	$= 4.63$	
IV	148, 553.716	148,553- 0.716	+ 2.998	40, 231.420	40,231- 0.420	- 0.105			1.259160	0.075180	
9	556.816	3.816	+ 0.102	234.393	3.393	+ 3.078			0.346086		11.745648
IV	553.818	0.818	- 3.100	234.498	3.498	- 2.973	10.843800			2.431914	
							10.843800	1.605246	2.507094	11.745648	
							9.238554				9.238554

$x\frac{1}{2} = 4.619277$
 $= 4.62$

