

街区略図

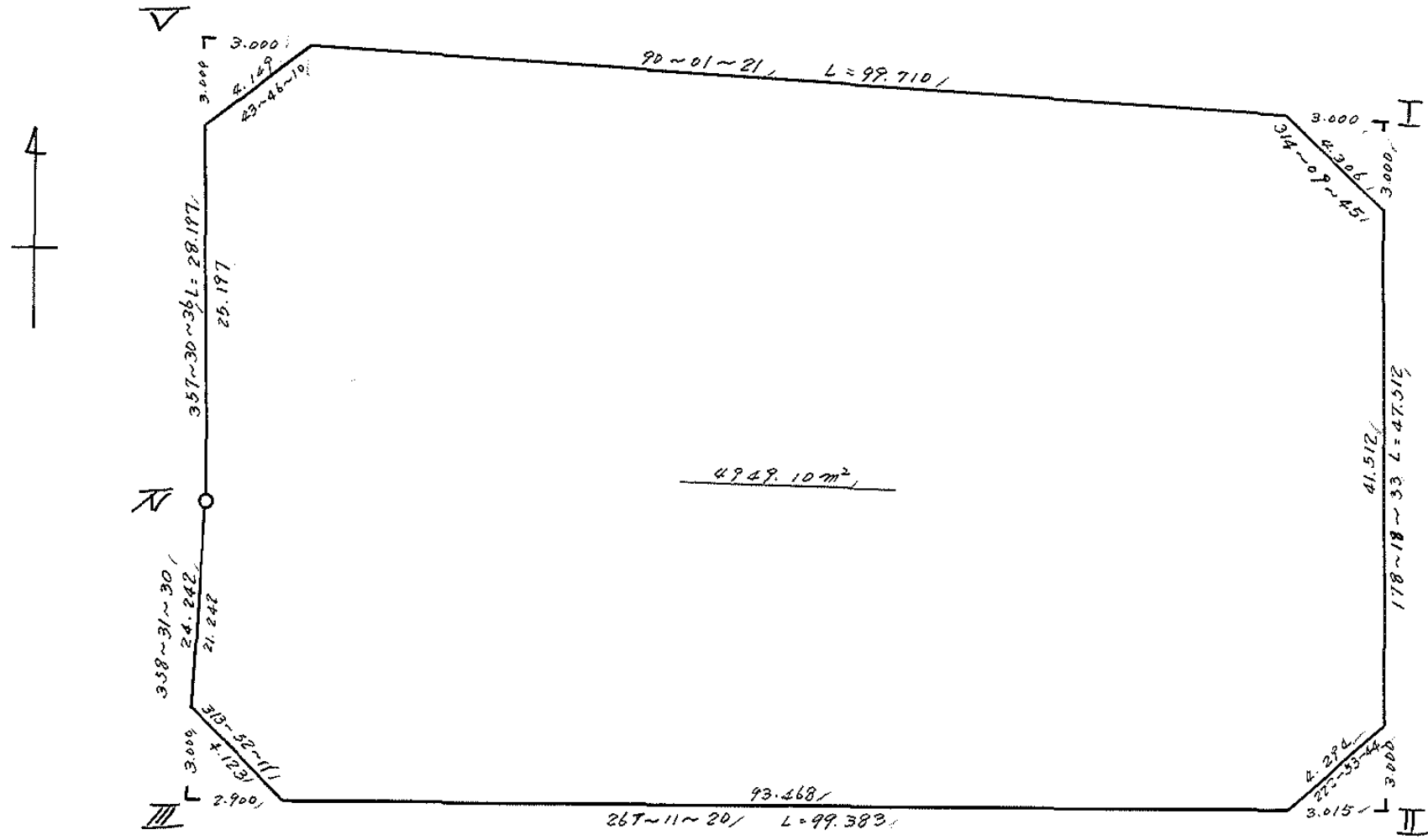
工区

ブロック

28

記入者

点検者



面積計算書

Ⅰ
区

フ
ロ
ック
20

計
算
者

結
算
者

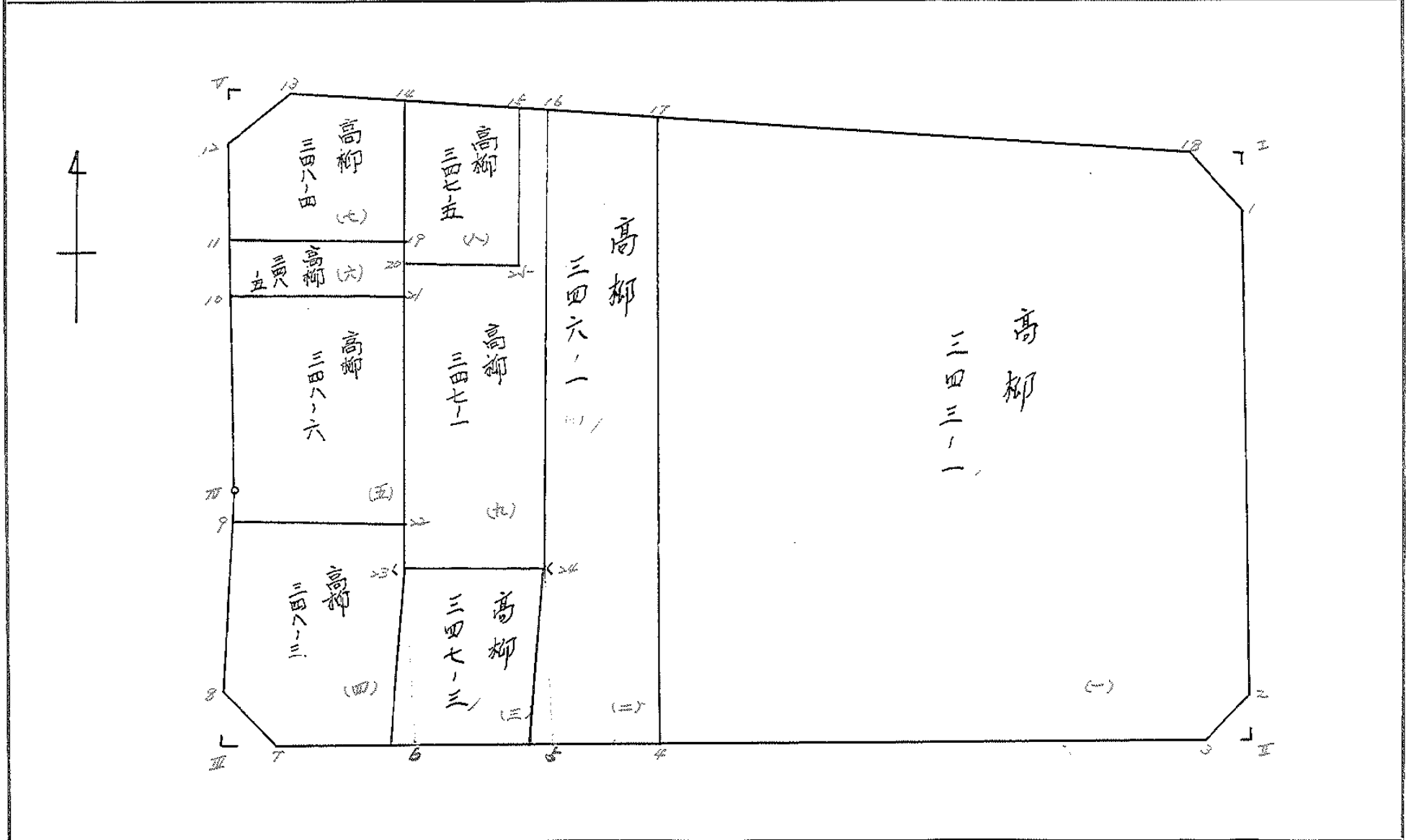
備
考

1/2倍

点	①	②	③	④	⑤	⑥	③ × ⑤		② × ⑥	
	X	X-(定数)	X _{n-1} -X _{n+1}	Y	Y-(定数)	Y _{n-1} -Y _{n+1}	+	-	+	-
	-148.	-148.680.0		-40.	-40.010.0					
I	689.444	9.444	+47.530	018.775	8.775	-101.112	417.075750		854.901728	
II	736.935	56.935	+52.365	012.373	7.373	+97.861	326.087145		8571.716035	
III	741.809	61.809	-19.360	116.636	106.636	+99.827	2064.472960		6173.915582	
IV	717.575	37.575	-52.404	117.260	107.260	+1.849	15620.283040		69.426175	
V	689.405	9.405	-28.131	118.425	108.425	-98.425	3051.791435		926.251425	
							10737.117535	203.162895	1881.153153	11815.107793
							9933.954640		9933.954640	
									1/2 = 4966.977320	
				I	II	III	IV			
				4966.97	(4.50 + 4.52 + 4.35 + 4.50)					4949.10
					17.27					

地 地 計 算

画地略図	工区	ブロック	28	記入者		点検者	
------	----	------	----	-----	--	-----	--



面積計算書

工区

ブロック

29

計算者

精算者

備考

高柳 343 の 1

①

高柳 346 の 1

②

点	①	②	③	④	⑤	⑥	③ × ⑤		② × ⑥	
	X	X-(定数)	X _{n-1} -X _{n+1}	Y	Y-(定数)	Y _{n-1} -Y _{n+1}	+	-	+	-
	-148	-148.680.0		-40.	-40.010.0					
1	692.443	12.443	+44.494	018.686	8.686	-4.314			386.474884	+3.679102
2	723.927	+3.927	+44.640	017.461	7.461	+1.698			333.059040	71.585026
3	737.083	+7.083	+5.350	020.384	10.384	+47.821			55.554400	2729.766143
4	739.287	+9.287	-47.658	065.282	55.282	+47.306	2634.629556			2804.630822
17	689.425	9.425	-49.844	067.690	57.690	-43.507	2875.500360			410.053475
18	689.443	9.443	+3.018	021.775	11.775	-49.004			35.536950	462.744772
							5510.129916	810.625274	926.477349	5625.981991
							4699.504642			4699.504642
									1/2 = 2349.752321	
17	689.425	9.425	+49.868	067.690	7.690	-17.650			383.484920	166.351250
16	739.287	+9.287	+50.633	065.282	5.282	+13.292			267.443506	788.042804
5	740.058	60.058	-15.947	080.982	20.982	+15.955	334.599954			958.225390
24	723.340	43.340	-50.639	081.237	21.237	+1.950	1075.420443			84.513000
16	689.419	9.419	-33.915	082.932	22.932	-13.547	777.738780			127.599193
							2187.759177	650.928426	293.950443	1830.781194
							1536.830751			1536.830751
									1/2 = 768.4153755	

面積計算書		工区	フ ロ ッ ク	計算者	測算者	備考	高柳 34703	③
							" 34803	④
点	①	②	③	④	⑤	⑥	③ × ⑤	② × ⑥
	X	X - (定数)	X _{n-1} - X _{n+1}	Y	Y - (定数)	Y _{n-1} - Y _{n+1}	+	-
	-148.	-148.720.0		-40.	-40.080.0			
24	723.340	3.340	+ 15.995	081.237	1.237	- 14.443	19.785815	48.239620
5	740.058	20.058	+ 17.423	080.982	0.982	+ 14.086	17.109386	282.436988
6	740.763	20.763	- 15.995	085.323	15.323	+ 14.443	246.091384	299.880009
23	724.063	4.063	- 17.423	085.425	15.425	- 14.086	268.749775	47.231418
							413.841160	36.895201
							476.945959	105.471038
								482.416997
								476.946959
								1/2 = 238.4729795
	-148.	-148.710.0		-40.	-40.090.0			
22	719.827	9.827	+ 3.189	085.624	5.624	- 21.750	17.934936	213.737250
23	724.063	14.063	+ 20.936	085.425	5.425	- 0.301	113.577800	4.232963
6	740.763	30.763	+ 17.604	085.323	5.323	+ 18.316	93.706092	563.455108
7	741.667	31.667	- 1.943	113.741	23.741	+ 21.390	46.366173	677.347130
8	738.810	28.810	- 20.793	116.713	26.713	+ 3.434	545.443409	98.933540
9	720.874	10.874	- 18.983	117.175	27.175	- 21.089	515.863025	229.321786
							1117.672607	225.218828
							447.291999	1339.745778
							892.453779	892.453779
								1/2 = 446.2268895

面積計算書		工区	ブロック	28	計算者	精算者	備考	高柳 348-6	④	
								7 348-5	⑤	
点	①	②	③	④	⑤	⑥	③ × ⑤	② × ⑥		
	X	X-(定数)	X _{n-1} -X _{n+1}	Y	Y-(定数)	Y _{n-1} -Y _{n+1}	+	-	+	-
	-148.	-148.700.0		-40.	-40.090.0					
21	704.495	4.495	+14.279	096.345	6.345	-22.159		90.600255	99.604705	
22	719.827	19.827	+16.379	095.624	5.624	+20.830		92.115496		412.996410
9	720.874	20.874	-2.252	117.175	27.175	+21.636	61.198100			451.629864
10	717.575	17.575	-15.326	117.260	27.260	+0.608	417.786760			10.625600
10	705.548	5.548	-13.080	117.783	27.783	-20.915	363.401640		116.036420	
							842.386500	182.71575	215.64125	275.311874
							659.670749			659.670749
									1/2 = 329.8353745	
	-148.	-148.700.0		-40.	-40.090.0					
19	702.148	2.148	+1.293	096.455	6.455	-21.540		8.346315	46.267920	
21	704.495	4.495	+3.400	096.345	6.345	+21.328		21.573000		95.869360
10	705.548	5.548	-1.293	117.783	27.783	+21.540	25.923419			119.503920
11	703.202	3.202	-3.400	117.885	27.885	-21.328	94.809000		68.292256	
							130.732419	29.919315	114.560176	215.373280
							100.813104			100.813104
									1/2 = 50.406552	

面積計算書						工区	ブロック	計算者	縮算者	備考
				28						高柳 347-1
点	①	②	③	④	⑤	⑥	③ × ⑤		② × ⑥	
	X	X-(定数)	X _{n-1} -X _{n+1}	Y	Y-(定数)	Y _{n-1} -Y _{n+1}	+	-	+	-
	-148.	-148.680.0		-40.	-40.080.0					
16	689.419	9.419	+33.922	082.932	2.932	-3.687		99.459304	34.727243	
24	723.340	43.340	+34.644	081.237	1.237	+12.493		42.854628		541.446620
23	724.063	44.063	-20.303	095.425	15.425	+18.176	313.173775			668.700028
20	703.037	23.037	-21.016	096.413	16.413	-11.164	344.935608		257.125068	
25	703.047	23.047	-13.619	084.261	4.261	-11.489	58.030559		264.786983	
15	689.418	9.418	-13.628	084.924	4.924	-1.329	67.104272		12.516522	
								783.244214	142.313932	569.216426
								640.930282		640.930282
										1/2 = 320.465141

面積計算書

工区

ブロック

28

計算者

計算者

備考

陽印 I
陽印 II

点	①	②	③	④	⑤	⑥	③	×	⑤	②	×	⑥
	X	X-(定数)	X _{n-1} -X _{n+1}	Y	Y-(定数)	Y _{n-1} -Y _{n+1}	+		-	+		-
	-148.	-148.680.0		-40.	-40.018.0							
I	689.444	9.444	+3.000	018.775	0.775	-3.089			2.325000	29.172516		
1.	692.443	12.443	-0.001	018.686	0.686	+3.000	0.000686					37.329000
18.	689.443	9.443	-2.999	021.775	3.775	+0.089	11.321225					0.840427
									11.321911	2.325000	29.172516	38.169427
									8.996911			8.996911
												1/2 = 4.498455
	-148.	-148.733.0		-40.	-40.017.0							
II	736.935	3.935	+3.146	017.373	0.373	+2.923			1.173458			11.502005
3	737.083	4.083	-2.998	020.384	3.384	+0.088	10.145232					0.359304
2.	733.937	0.937	-0.148	017.461	0.461	-3.011	0.068228					2.821307
									10.213460	1.173458	2.821307	11.861309
									9.040002			9.040002
												1/2 = 4.520001

