

街区略図

工区

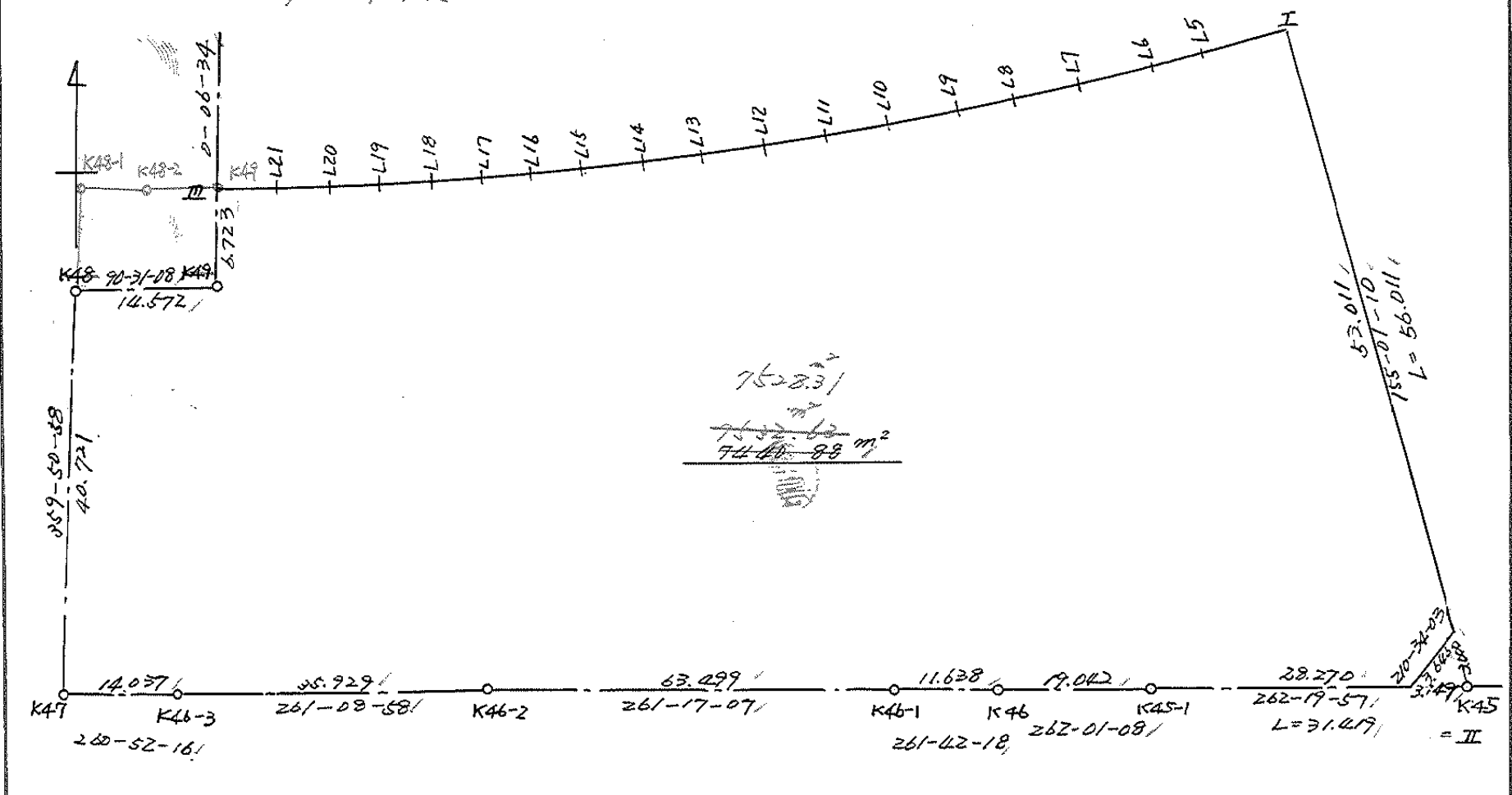
ブロック

64

記入者

点検者

地界実変更



面積計算書

工区

ブロック

64

計測者



計算者



備考

全 莫之1

点	①	②	③	④	⑤	⑥	③ × ⑤		② × ⑥	
	X	X-(定数)	X _{n-1} -X _{n+1}	Y	Y-(定数)	Y _{n-1} -Y _{n+1}	+	-	+	-
I	⁻¹⁴⁸ 940.257	^{148.940} 0.257	+ 49.928	⁻³⁹ 981.939	^{39.950} 31.939	- 25.952				
II	991.028	51.028	+ 54.963	958.285	8.285	+ 7.484				
K45-1	995.220	55.220	+ 6.836	989.423	39.423	+ 49.996				
K46	997.864	57.864	+ 4.323	⁻⁴⁰ 008.281	58.281	+ 30.374				
K46-1	999.543	59.543	+ 11.300	019.797	69.797	+ 74.282				
K46-2	⁻⁴⁹ 009.164	69.164	+ 15.149	082.563	132.563	+ 98.267				
K46-3	014.692	54.692	+ 7.755	118.064	168.064	+ 49.360				
K47	016.919	76.919	- 38.494	131.923	181.923	+ 13.966	7002.943962			1074.250754
K48	⁻¹⁴⁸ 976.198	36.198	- 40.589	182.030	182.030	- 14.465	7358.415670			523.604070
K49	976.330	36.330	- 6.591	117.458	167.458	- 14.585	1103.715678			529.873050
III	969.607	29.607	- 7.134	117.445	167.445	- 5.878	1194.552630			174.029946
L-21	969.196	29.196	- 1.198	111.580	161.580	- 13.998	192.572840			408.625608
L-20	968.409	28.409	- 1.676	103.447	153.447	- 16.261	257.177172			461.958749
L-19	967.520	27.520	- 1.959	095.319	145.319	- 16.227	284.679921			446.567040
L-18	966.450	26.450	- 2.249	087.220	137.220	- 16.185	308.607780			428.093250
L-17	965.271	25.271	- 2.494	079.134	129.134	- 16.155	322.060196			408.253005
L-16	963.956	23.956	- 2.757	071.065	121.065	- 16.115	323.776205			386.050940

面積計算書

工区

ブロック

64

計算者

(Handwritten Signature)

計算者

壽

備考

全

其二

点	①	②	③	④	⑤	⑥	③ × ⑤		② × ⑥	
	X	X-(定数)	X _{n-1} -X _{n+1}	Y	Y-(定数)	Y _{n-1} -Y _{n+1}	+	-	+	-
L15	962.514	22.514	-3.052	063.019	113.019	-16.052	344.933928		261.394728	
L14	960.904	20.904	-3.327	055.013	105.013	-15.995	349.378261		334.359480	
L13	959.187	19.187	-3.517	047.024	97.024	-15.964	341.234088		306.301268	
L12	957.387	17.387	-3.735	039.049	89.049	-15.915	332.598015		276.714105	
L11	955.452	15.452	-4.025	031.109	81.109	-15.844	326.463725		244.821408	
L10	953.362	13.362	-4.306	023.205	73.205	-15.774	315.220730		210.772188	
L9	951.146	11.146	-4.584	015.335	65.335	-15.699	296.228890		174.981054	
L8	948.828	8.828	-4.783	007.506	57.506	-15.618	275.051188		137.875704	
L7	946.363	6.363	-5.017	-39 999.717	49.717	-15.559	249.430189		99.001917	
L6	943.811	3.811	-5.263	991.947	41.947	-15.480	220.767061		58.994280	
L5	941.100	1.100	-3.554	984.237	34.237	-10.008	121.678298		11.008800	
							21562.485807	6671.702445	5990.010334	20880.793596
							14890.783262			14890.783262
									1/2 = 7445.391631	
						陽切				
						7445.39	-4.51	=	7440.88	
										1000000000000000000
						7440.88	+ 52.70	=	7533.79	
						87.43			7528.31	

面積計算書

工
区

ブ
ロ
ック

64

計
算
者

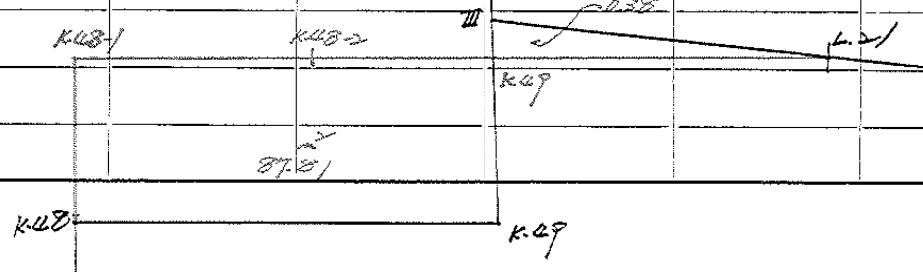


審
算
者

備
考

地区界点変更による7007追加分

点	①	②	③	④	⑤	⑥	③ × ⑤		② × ⑥	
	X	X-(定数)	X _{n-1} -X _{n+1}	Y	Y-(定数)	Y _{n-1} -Y _{n+1}	+	-	+	-
K49(新)	-148 969.737	-148.960 9.737	+ 6.126	-40 117.445	-40.110 7.445	- 5.949			45.608070	579.5413
K49(旧)	976.330	16.330	+ 6.461	117.458	7.458	+ 14.585			48.186138	238.173050
K48(旧)	976.198	16.198	- 5.671	132.030	22.030	+ 14.587	124.932130			236.280226
K48-1	970.659	10.659	- 5.994	132.045	22.045	- 8.623	132.137730			91.912557
K48-2	970.204	10.204	- 0.922	123.407	13.407	- 14.600	12.361254			148.978400
							289.431114	93.794208	298.816370	474.453226
							175.636906			175.636906
									1/2 = 87.818453	
L21	-148 969.196	-148.969 0.196	+ 0.130	-40 111.530	-40.111 0.580	0			0.075400	0.0
K49(新)	969.737	0.737	+ 0.411	117.445	6.445	+ 5.865			2.648895	4.322505
II	969.607	0.607	- 0.541	117.445	6.445	- 5.865	3.486745			3.560055
							3.486745		2.724295	3.560055
							0.762450			0.762450
									1/2 = 0.381225	
									87.81 - 0.38 = 87.43	



面積計算書

工区

ブロック

64

計算者

Handwritten signature

簡算者



備考

隅切 II

点	①	②	③	④	⑤	⑥	③ × ⑤	② × ⑥
	X	X-(定数)	X _{n-1} -X _{n+1}	Y	Y-(定数)	Y _{n-1} -Y _{n+1}	+	-
Z	⁻¹⁴⁸ 988.309	^{-148,980} 8.309	⁻³⁹ -0.420	959.552	^{-39,950} 8.442	-3.121	4.011840	25.937389
II=K45	991.028	11.028	+3.139	958.285	8.285	+1.854		20.445912
3	991.448	11.448	-2.719	961.406	11.406	+1.267	31.012914	14.504616
							25.024754	26.006615
							9.018139	25.937389
								34.950528
								9.018139
								1/2 = 4.5090695
								= 4.51

面地計算

画地略図

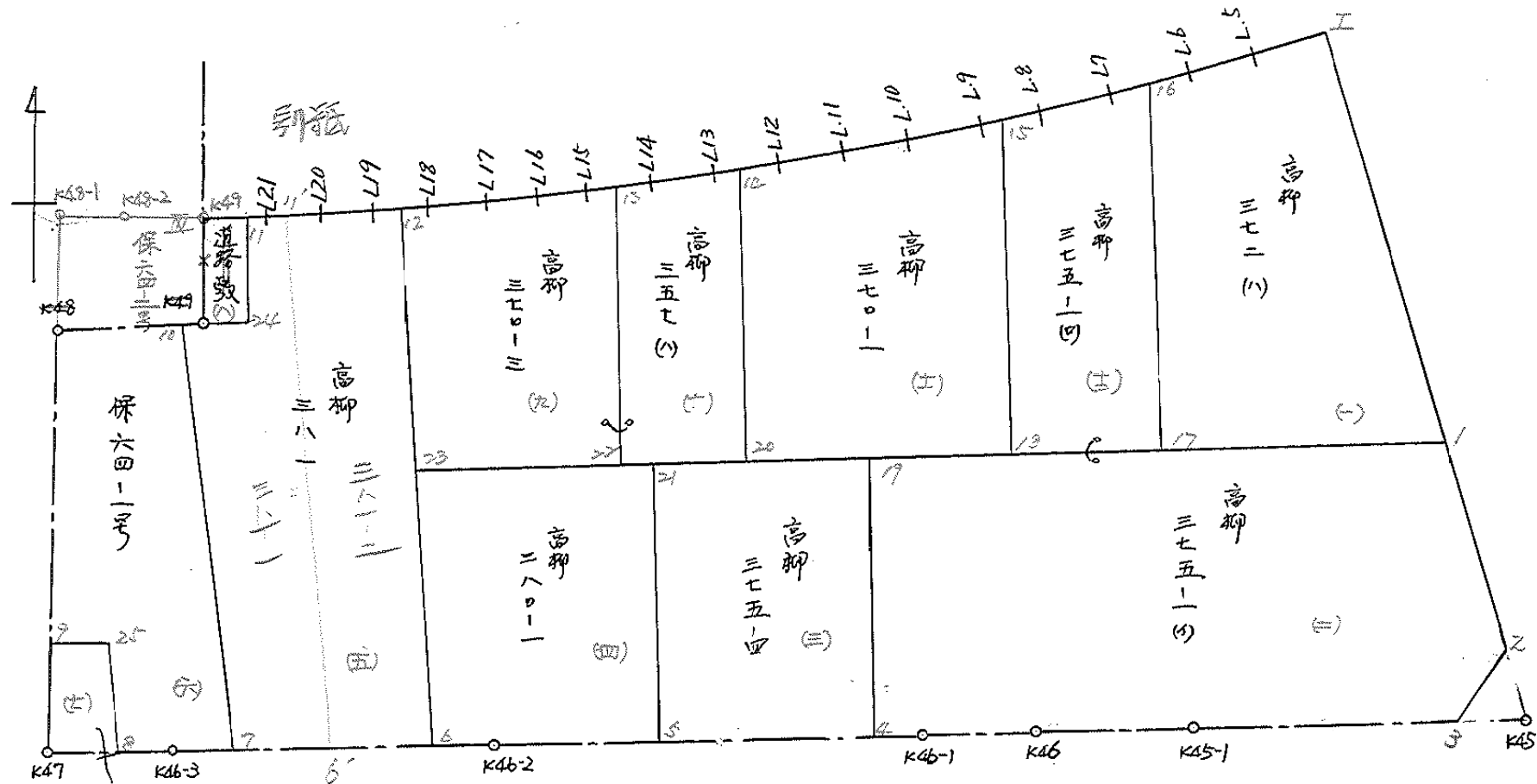
工区

ブロック

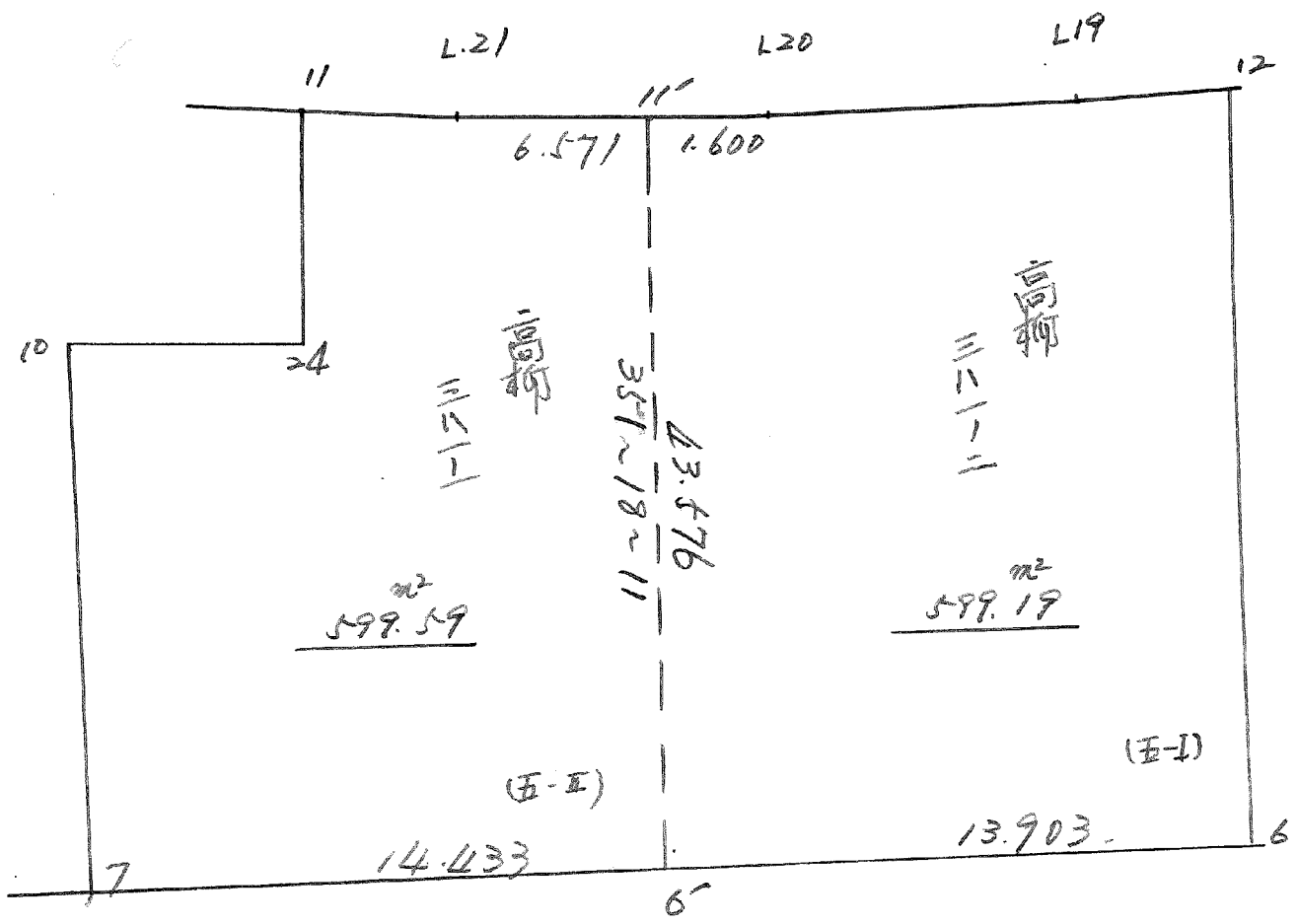
64

記入者

点検者



高柳
 一九一七
 一九一五
 一九一五
 一九一五
 一九一五
 一九一五
 一九一五
 一九一五
 一九一五
 一九一五
 一九一五



面積計算書

工
区

フ
ロ
ン
ク

64

計
算
者

監
理
者

精
算
者



備
考

1. 高柳 372(ハ)

2. 高柳 374-1(イ)

点	①	②	③	④	⑤	⑥	⑦	⑧	⑨	⑩
	X	X-(定数)	X _{n-1} -X _{n+1}	Y	Y-(定数)	Y _{n-1} -Y _{n+1}	+	-	+	-
I	-148 940.257	-148.940 0.257	+ 30.249	-39 981.939	-39.960 21.939	-16.784			663.632817	4.313488
1	971.349	31.349	+ 35.129	967.453	7.453	+ 11.700			261.816437	366.783300
17	975.386	35.386	- 25.485	993.639	33.639	+ 30.744	857.289915			1087.907184
16	945.864	5.864	- 31.575	998.197	38.197	- 1.692	1206.07027			9.921888
L6	943.811	3.811	- 4.764	991.947	31.947	-13.960	152.195508			53.201560
L5	941.100	1.100	- 3.554	984.237	24.237	-10.008	86.138298			11.008800
							2301.693996	925.449248	78.445736	1454.690224
							1376.244748			1376.244748
										$\frac{1}{2} = 628.122374 m^2$
1	-148 971.349	-148.970 1.349	+ 7.221	-39 967.453	-39.950 17.453	-71.073			126.028113	95.877427
2	988.309	18.309	+ 20.099	959.552	9.552	- 6.047			191.985648	110.714523
3	991.448	21.448	+ 6.911	961.406	11.406	+ 29.871			78.826866	640.673208
K45-1	995.220	25.220	+ 6.416	989.423	39.423	+ 46.875			252.937968	1182.187500
K46	997.864	27.864	+ 4.323	-40 008.281	58.281	+ 30.374			251.928763	846.341136
K46-1	999.543	29.543	+ 2.870	019.797	69.797	+ 19.285			200.317390	569.736755
4	-149 000.734		30.734	-18.455	027.566	77.566	+ 10.828	1231.480530		332.787722
19	-128 981.088	11.088	- 29.385	030.625	80.625	- 60.113	2369.165625			666.532944

3800.646155 1102.044748 3731.229444 3571.726351
2698.601407 $\Sigma = 1349.3007035$ 2698.601407

面積計算書		工 区	ブ ロ ック	64	計 算 者	測 算 者	備 考	3. 高柳 275-4 4. 高柳 280-1		
点	①	②	③	④	⑤	⑥	③ × ⑤	② × ⑥		
	X	X-(定数)	X _{n-1} -X _{n+1}	Y	Y-(定数)	Y _{n-1} -Y _{n+1}	+	-	+	-
19	⁻¹⁴⁸ 981.088	^{-148,980} 1.088	+ 16.276	⁻⁴⁰ 030.625	^{-40,020} 10.625	- 24.916			172.932500	27.108608
4	⁻¹⁴⁸ 000.734	^{-148,734} 20.734	+ 22.999	⁻⁴⁰ 027.566	^{-40,566} 7.566	+ 18.815			174.010434	390.110210
5	⁻¹⁴⁸ 004.087	^{-148,087} 24.087	- 16.276	⁻⁴⁰ 049.440	^{-40,440} 29.440	+ 24.916	479.165440			600.151692
21	⁻¹⁴⁸ 984.458	^{-148,984} 4.458	- 22.999	⁻⁴⁰ 052.482	^{-40,482} 32.482	- 18.815	747.053518		83.877270	
							1226.218958	346.942934	110.925878	990.261907
							879.276024			879.276024
										1/2 = 439.638012
21	⁻¹⁴⁸ 984.458	^{-148,980} 4.458	+ 14.190	⁻⁴⁰ 052.482	^{-40,040} 12.482	- 38.319			177.119580	170.826102
5	⁻¹⁴⁸ 004.087	^{-148,087} 24.087	+ 24.706	⁻⁴⁰ 049.440	^{-40,440} 9.440	+ 30.081			233.224640	724.561047
K46-2	⁻¹⁴⁸ 009.164	^{-148,009} 29.164	+ 5.412	⁻⁴⁰ 082.563	^{-40,563} 42.563	+ 35.274			230.350956	1028.730936
6	⁻¹⁴⁸ 008.499	^{-148,008} 29.499	- 19.267	⁻⁴⁰ 094.714	^{-40,714} 44.714	+ 5.196	261.504638			153.276804
23	⁻¹⁴⁸ 989.897	^{-148,989} 9.897	- 25.041	⁻⁴⁰ 087.759	^{-40,759} 47.759	- 32.232	1175.933119		319.000104	
							2057.437747	7640.625176	489.826206	1906.568787
							1416.742581			1416.742581
										1/2 = 708.3712905

面積計算書		工区	ブロック	64	計算者	経理者	備考	6.保 64-1号		
点	① X	② X-(定数)	③ X _{n-1} -X _{n+1}	④ Y	⑤ Y-(定数)	⑥ Y _{n-1} -Y _{n+1}	③ × ⑤ +	⑤ -	② × ⑥ +	⑥ -
10	⁻¹⁴⁸ 976.320'	^{-148.970} 6.320'	+ 37.661'	⁻⁴⁰ 118.528'	^{-40.110} 8.528'	- 19.317'			321.173008	-122.083440
7	⁻¹⁴⁸ 013.859'	43.859'	+ 38.372'	112.713'	2.713'	- 0.464'			104.103236	20.350576
K46-3	014.692'	44.692'	+ 2.134'	118.064'	8.064'	+ 13.445'			17.208576	600.883940
8	015.993'	45.993'	- 10.529'	126.158'	16.158'	+ 9.918'			170.127582	456.158574
25	004.163'	34.163'	- 11.204'	127.982'	17.982'	+ 5.797'			201.470328	198.042911
9	⁻¹⁴⁸ 004.789'	34.789'	- 27.965'	131.955'	21.955'	+ 4.048'			613.971575	140.825872
K48	⁻¹⁴⁸ 076.198'	6.198'	- 28.469'	132.030'	22.030'	- 13.427'			627.172070	83.220546
									1612.741555	442.484820
									225.654562	1395.911287
									1170.256735	1170.256735
									1/2 = 585.1283675	
25	⁻¹⁴⁸ 004.163'	^{-149.000} 4.163'	+ 11.204'	⁻⁴⁰ 127.982'	^{-40.120} 7.982'	- 5.797'			89.430328	-24.132911
8	015.993'	15.993'	+ 12.756'	126.158'	6.158'	+ 3.941'			78.551448	63.028413
K47	016.919'	16.919'	- 11.204'	131.923'	11.923'	+ 5.797'			133.525282	98.079443
9	004.789'	4.789'	- 12.756'	131.955'	11.955'	- 3.941'			102.497980	18.873449
									286.083272	167.981776
									43.006360	161.107856
									118.101496	118.101496

1/2 = 59.510748 株式会社

191-7 199-5 288-2 }
7. 市部 199-5 208-2 289-2 }
291-3 }

面積計算書

工
区

フ
ロ
ク
ク

64

計
算
者



測
定
者



備
考

~~8. 高柳 370-3~~
9. 高柳 370-3

点	①	②	③	④	⑤	⑥	③ × ⑤		② × ⑥	
	X	X-(定数)	X _{n-1} -X _{n+1}	Y	Y-(定数)	Y _{n-1} -Y _{n+1}	+	-	+	-
11	969.327	9.327	+ 6.759	113.443	3.443	- 3.987		23.271237		37.186749
24	976.366	16.366	+ 7.023	113.458	3.458	+ 4.015		24.216374		65.709490
K49	976.330	16.330	- 6.759	117.458	7.458	+ 3.987	40.408622			65.107710
III	969.607	9.607	- 7.023	117.445	7.445	- 4.015	42.137335			39.572105
							102.545957	47.487611	75.758254	130.817200
							55.058346			55.058346
							1/2 = 27.529173			
13	961.513	1.513	+ 22.244	058.041	8.041	- 8.590		178.864004		12.996670
22	984.758	24.758	+ 28.384	054.429	4.429	+ 29.718		125.712736		735.758244
23	989.897	29.897	- 17.767	087.759	37.759	+ 36.888	670.864153			1102.840536
12	966.991	6.991	- 23.447	091.317	41.317	- 0.539	968.759699			3.768149
L18	966.450	6.450	- 1.720	087.220	37.220	- 12.193	64.018400			78.680350
L17	965.271	5.271	- 2.494	079.134	29.134	- 16.155	72.660196			25.153005
L16	963.956	3.956	- 2.757	071.065	21.065	- 16.115	58.076205			63.750940
L15	962.514	2.514	- 2.443	063.019	13.019	- 13.024	31.805417			32.742336
							1866.124070	304.576740	276.991450	1838.598780
							1561.607330			1561.607330

1/2 = 780.833665
三和建設株式会社

面積計算書

工区

ブロック

64

計算者



検査者

備考

8. 保留地 64-2号

点	①	②	③	④	⑤	⑥	③ × ⑤		② × ⑥	
	X	X-(定数)	X _{n-1} -X _{n+1}	Y	Y-(定数)	Y _{n-1} -Y _{n+1}	+	-	+	-
11	^{-148,} 969.368	^{-148,960} 9.368	+ 6.629	^{-40,} 113.443	^{-40,110.} 3.443	- 3.987			22.523.647	37.250.246
24	976.368	16.368	+ 6.830	113.458	3.458	+ 18.587			23.618.140	306.194.842
K.48	976.198	16.198	- 5.707	132.030	22.030	+ 18.587	125.725.210			301.072.226
K.48-1	970.659	10.659	- 5.994	132.045	22.045	- 8.623	132.137.720			91.912.547
K.48-2	970.204	10.204	- 0.922	123.407	13.407	- 14.600	12.361.244			143.978.400
K.49	969.737	9.737	- 0.836	117.045	7.045	- 9.964	6.224.020			97.019.488
							276.448.214	46.441.787	375.260.641	605.267.068
							230.006.427			230.006.427
									72 = 115.003.213	

面積計算書		工区	ブロック	64	計算者	計	備考	10. 高柳 357 (V)	11. 高柳 370-1	
点	①	②	③	④	⑤	⑥	⑧ × ⑤	② × ⑥		
	X	X-(定数)	X _{n-1} -X _{n+1}	Y	Y-(定数)	Y _{n-1} -Y _{n+1}	+ -	+ -		
	-148	-148.950		-40	-40.040					
14	958.910'	2.9104 + 23.667	045.798'	4.798'	- 4.947		137.221266	- 44.077770		
20	982.854'	32.854 - + 25.848	042.077'	2.077'	+ 8.631		43.686296	- 283.562874		
22	984.758'	34.758 - + 1.341	054.429'	14.429'	+ 15.964	307.929289		- 554.876712		
13	961.513'	11.513 - - 23.854	058.041'	18.041'	+ 0.584	430.350014		- 6723592		
L14	960.904'	10.904 - - 2.326	055.013'	15.013'	- 11.017	34.920238		- 120.129368		
L13	959.187'	9.187 - - 1.994	047.024'	7.024'	- 9.215	14.005856		- 84.658205		
							787.205397	120.907562	248.865343	845.163178
							596.297835		596.297835	
								1/2 = 298.1489175		
	-148	-148.950		-40	-40.010					
15	950.810'	0.810 - + 26.764	014.199'	4.199'	- 5.323		112.382036	- 4.311630		
18	977.910'	27.910 - + 32.044	010.012'	0.012'	+ 27.878		0384528	- 778.074980		
20	982.854'	32.854 - - 18.000	042.077'	32.077'	+ 25.786	609.463000		- 1175.713244		
14	958.910'	2.910 - - 25.467	045.998'	25.998'	- 3.028	911.669666		- 26.979480		
L12	957.387'	7.387 - - 3.458	039.049'	29.049'	- 14.689	100.451442		- 108.507663		
L17	955.452'	5.452 - - 4.025	031.109'	21.109'	- 15.844	86.963725		- 86.381688		
L10	953.362'	3.362 - - 4.306	027.205'	13.205'	- 15.774	56.860730		- 53.032188		
L9	951.146'	1.146 - - 2.562	015.335'	5.335'	- 9.006	13.614920		- 10.320896		

1777.021683 112.766564 28853205 1853.788224
 1664.254919 1/2 = 832.1274595 1664.254919

面積計算書		工区	ブロック	64	計算者	審査者	備考	R高柳 375-1(10)			
点	①	②	③	④	⑤	⑥	③ × ⑤	② × ⑥			
	X	X-(定数)	X _{n-1} -X _{n+1}	Y	Y-(定数)	Y _{n-1} -Y _{n+1}	+	-	+	-	
16	⁻¹⁴⁸ 945.864	^{-148,940} 5.864	+ 29.023	⁻³⁹ 998.197	^{29,990} 8.197	- 6.078			237.901531	35.641392	
17	975.386	35.386	+ 32.046	993.639	3.639	+ 11.815			116.615394	418.085590	
18	977.910	37.910	- 24.576	⁻⁴⁰ 010.01	20.012	+ 20.560	491.814912			979.429600	
15	950.810	10.810	- 29.082	014.199	24.199	- 2.506	703.755318			27.089860	
L.8	948.828	8.828	- 4.447	007.506	17.506	- 14.482	77.849182			127.847096	
L.7	946.363	6.363	- 2.964	⁻³⁹ 999.717	9.717	- 9.309	28.801188			19.233167	
							1302.220600	- 354.516925	249.811515	1197.515190	
							947.703675			947.703675	
										$\frac{1}{2} = 473.8518375$	

面積計算書

工
区

ブ
ロ
ック

64

計
算
者



精
算
者

備
考

高柳 381-1 (5-2)

点	①	②	③	④	⑤	⑥	③ × ⑤		② × ⑥			
	X	X - (定数)	X _{n-1} - X _{n+1}	Y	Y - (定数)	Y _{n-1} - Y _{n+1}	+	-	+	-		
11'	^{-109,} 968.563	^{-109, 900 -} 68.563	+ 42.442	^{-40,} 105.040	^{-40, 090 -} 15.040	- 13.129			638.327690	900.163627		
6'	^{-109,} 111.638	111.638	+ 45.296	098.451	8.451	+ 7.673			382.796486		858.598374	
7	013.859	113.859	- 35.318	112.713	22.713	+ 20.077	802.177734				5285.947143	
10	^{-148,} 976.320	76.320	- 37.493	118.528	28.528	+ 0.745	1069.600304				56.859400	
24	976.366	76.366	- 6.952	113.458	23.458	- 5.085	162.080016			388.321110		
11	969.368	69.368	- 7.170	113.443	23.443	- 1.878	168.086310			130.273104		
121	969.196	69.196	- 0.805	111.580	21.580	- 8.403	17.371900			581.453988		
									2220.316264	1021.124176	2000.211829	3199.403917
									1199.192088		1199.192088	
									x 1/2 = 599.596044			

面積計算書

工
区

ブ
ロ
ック

64

計算者



精算者

備考

高柳 381-2 (5-1)

点	①	②	③	④	⑤	⑥	③ × ⑤		② × ⑥		
	X	X - (定数)	X _{n-1} - X _{n+1}	Y	Y - (定数)	Y _{n-1} - Y _{n+1}	+	-	+	-	
12	^{-103,} 966.991	^{-103,900-} 66.991	+ 41.979	^{-40,} 091.317	^{-40,090-} 11.317	- 10.605			475.076343	710.439554	
6	^{-109,} 009.499	109.499	+ 44.647	084.714	4.714	+ 7.134			210.465958		781.165866
6'	011.638	111.638	- 40.936	098.145	18.451	+ 20.326	755.310136				2269.153988
11'	^{-103,} 968.563	68.563	- 43.229	105.040	25.040	+ 6.996	1092.454160				302.540708
L20	968.409	68.409	- 1.043	103.447	23.447	- 9.721	24.455221			665.003889	
L19	967.520	67.520	- 1.418	95.319	15.319	- 12.130	21.722342			819.067600	
							1883.941819	685.542301	2196.461044		3392.860602
							1198.399558				1198.399558
							1/2 = 599.199779				

計年月 算日	計算者	(總山)	検査者
-----------	-----	------	-----

B. NO. 64

各筆面積計算書

地番	算式	隅切	地積	摘要
1	高柳 372 (Ⅰ)		688.12'	
2	高柳 375-1 (Ⅰ)		1349.30'	
3	高柳 375-Ⅱ		439.63'	
4	高柳 380-1		708.37'	
5	高柳 381-1		599.59	
6	保留地 64-1号		585.12'	
7	高柳 191-7 208-2 271-3 198-4 288-2 199-5 289-2		59.05'	
8	保留地 64-2号		115.00	
9	高柳 370-3		780.80'	
10	高柳 357 (Ⅰ)		298.16	
11	高柳 370-1		832.12	
12	高柳 375-1 (Ⅲ)		473.85	
13	高柳 381-2		599.19	
		合計	7528.28	
		全面積	7528.31	
		差	-0.03	
	空地面積		6828.16	11筆
	保留地面積		700.12	2筆