

街区略図

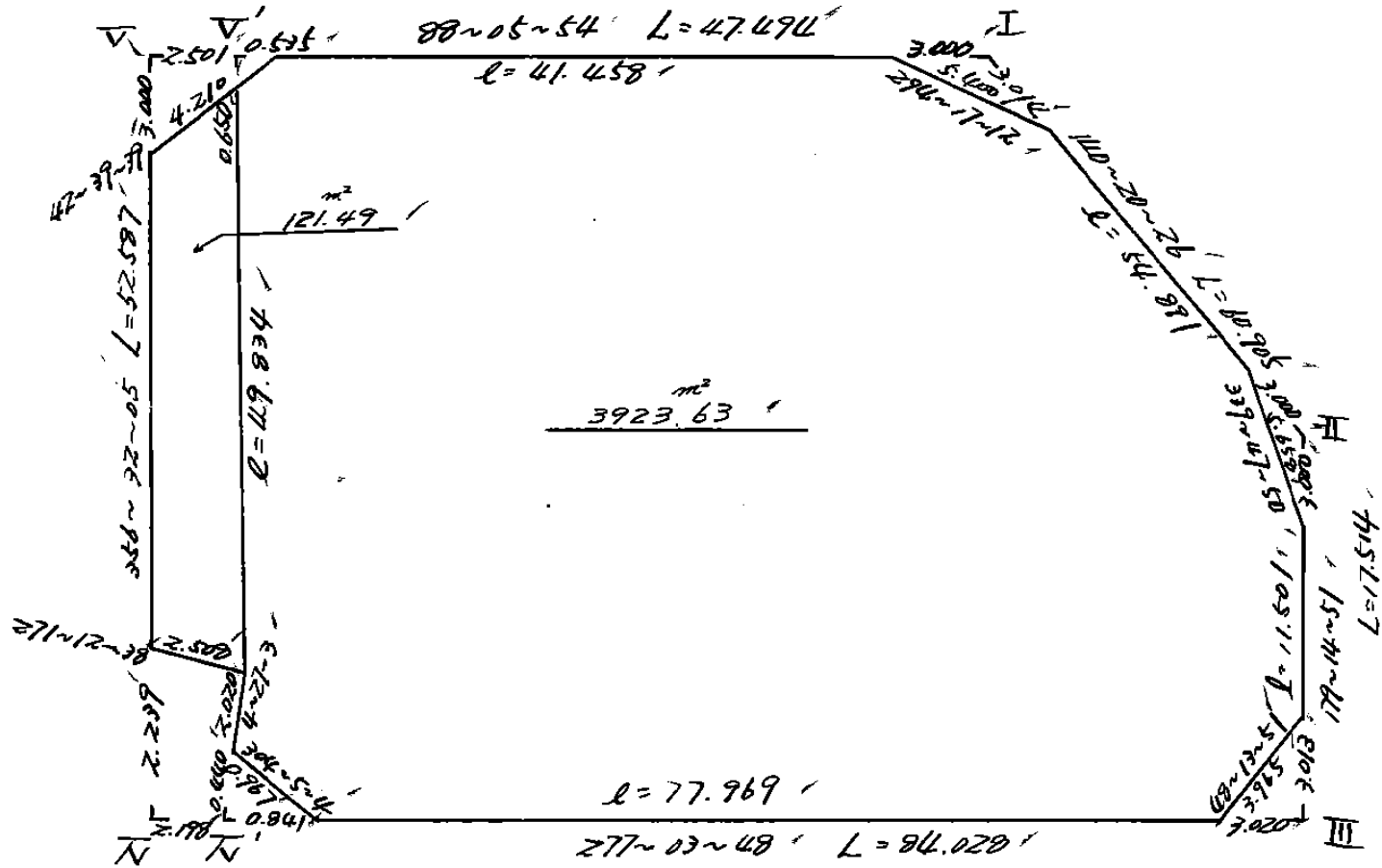
工区

ブロック

4

記入者

点検者



面積計算書

工区

ブロック

4

計算者

精算者



備考

全体

点	①	②	③	④	⑤	⑥	③ × ⑤		② × ⑥	
	X	X-(定数)	X _{n-1} -X _{n+1}	Y	Y-(定数)	Y _{n-1} -Y _{n+1}	+	-	+	-
I	-148 442.046	-148.440 2.046	+ 45.312	760.012	-39. 40.012	- 86.339			1813.023744	176.649594
II	488.934	48.934	+ 64.400	721.141	1.141	- 39.101			73.480400	1913.368334
III	506.446	66.446	+ 7.179	720.911	0.911	+ 83.161			6540069	5525.715806
IV	496.113	56.113	- 62.824	804.302	84.302	+ 86.569	5296.88348			4857.646297
V	443.622	3.622	- 54.067	807.480	87.480	- 44.290	4729.781160		160.418380	
							10025.970008	1893.044213	2250.436308	10383.362103
							8132.925795			8132.925795
									1/2 = 4066.4628975	
			Σキリエ	Σキリロ	ΣキリⅢ	ΣキリⅣ	ΣキリⅤ	ΣキリⅥ	ΣキリⅦ	
		4066.46	(3.57 + 2.83 + 4.51)		+ 5.69	+ 4.74	+ 121.49			
					(142.83)					
					㎡					
					3923.63					

画地計算

画地略図

工区

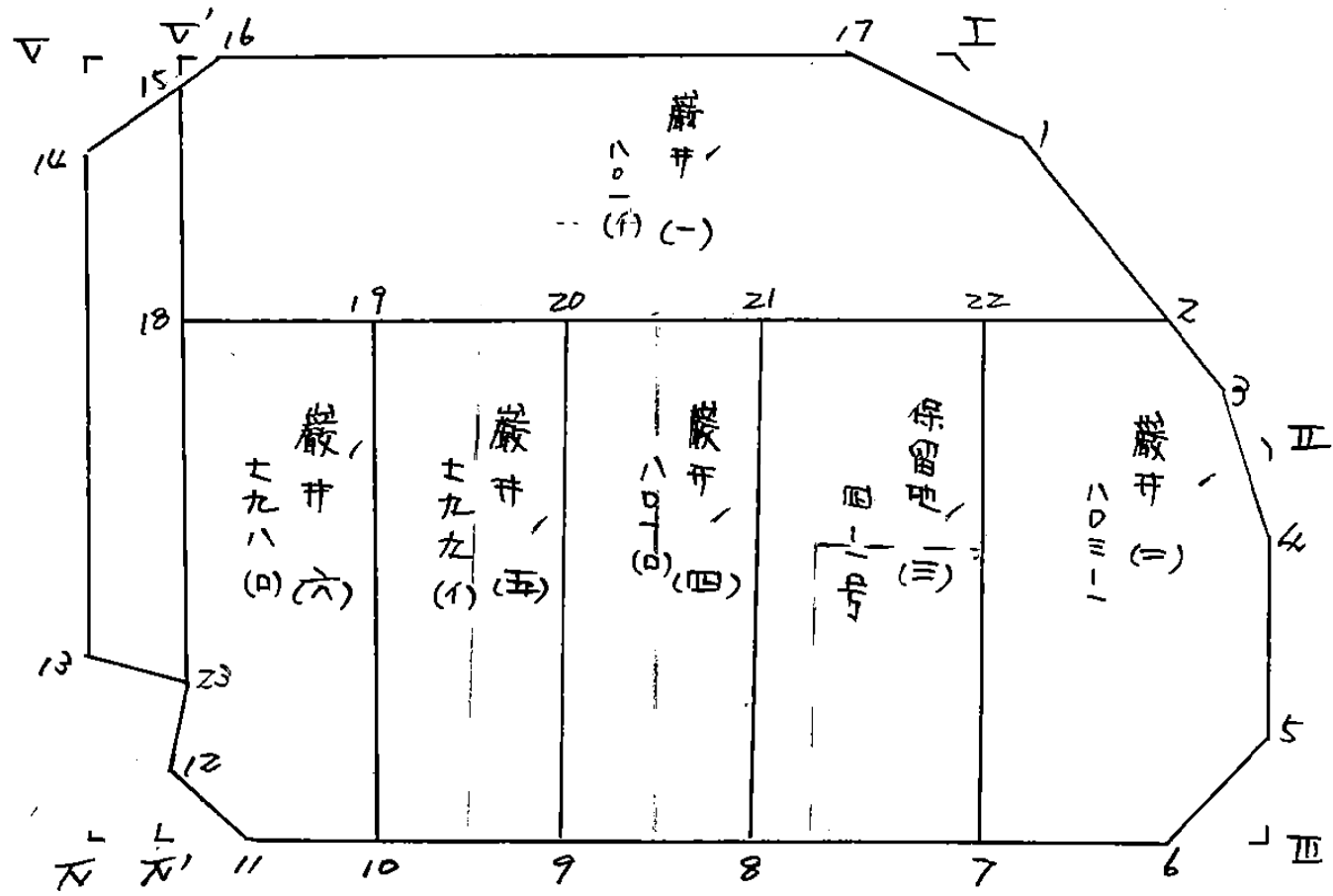
ブロック

4

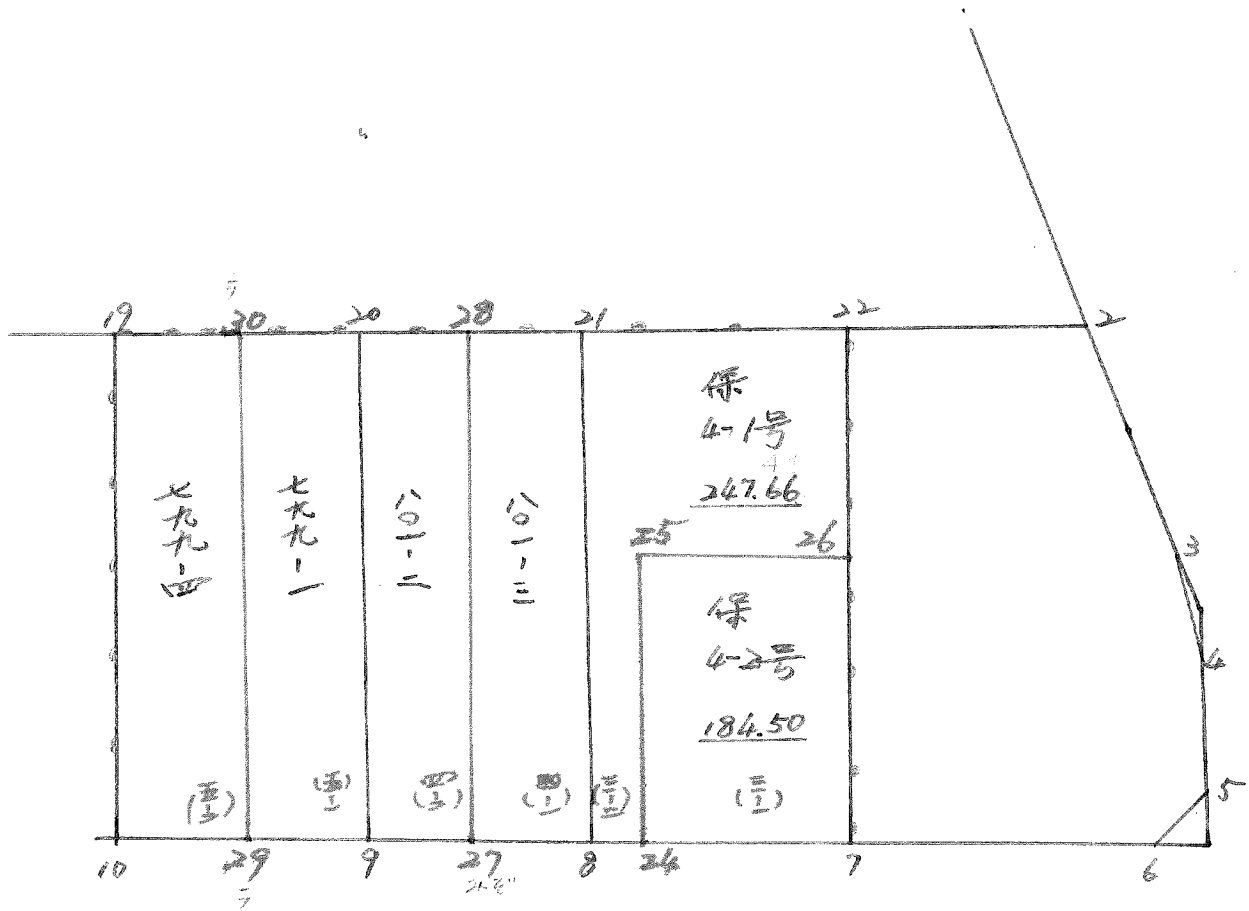
記入者



点検者



BNo. 4 変更計算



面積計算書

工区

ブロック

4

計算者

精算者



備 1. 巖井 801 (1)

備 2. 巖井 803-1

点	①	②	③	④	⑤	⑥	③	⑤	②	⑥	
	X	X-(定数)	X _{n-1} -X _{n+1}	Y	Y-(定数)	Y _{n-1} -Y _{n+1}	+	-	+	-	
	-148	-148.440		-39	-39.730						
1	444.366'	4.366'	+ 30.266'	758.088'	28.088'	- 28.171'		850.111.408'	122.994586		
2	472.411'	32.411'	+ 32.097'	734.839'	4.839'	+ 44.899'		155.317383		1455.22/489	
18	476.463'	36.463'	- 28.223'	802.987'	72.987'	+ 70.102'	2059.912101			2556.129226	
15	444.188'	4.188'	- 32.942'	804.941'	74.941'	+ 1.459'	2468.706422			6.110292	
16	443.521'	3.521'	- 2.043'	804.666'	74.446'	- 41.931'	152.093.178		147.639051		
17	442.145'	2.145'	+ 0.845'	763.010'	33.010'	- 46.358'		27.293.450	99.437910		
								4680.711701	1033.322241	270.071547	4017.461007
								3647.389460			3647.389460
								$\frac{1}{2} = 1823.694730'$			
2	-148	-148.450		-39	-39.700						
2	472.411'	22.411'	+ 13.608'	734.839'	34.839'	- 21.960'		474.089112	492.145560		
3	486.624'	36.624'	+ 19.523'	723.056'	23.056'	- 13.737'		450.122288	503.103.888		
4	491.934'	41.934'	+ 16.310'	721.102'	21.102'	- 2.105'		354.724620	88.271070		
5	503.434'	53.434'	+ 14.141'	720.951'	20.951'	+ 2.806'		296.268.091		149.925804	
6	506.075'	56.075'	+ 0.254'	722.908'	23.908'	+ 22.215'		6.072632		1245.706125	
7	503.688'	53.688'	- 33.059'	743.166'	43.166'	+ 21.108'	1427.024794			1133.246204	
22	472.016'	22.016'	- 31.277'	765.016'	45.016'	- 8.327'	1407.965432		191.654232		
								2834.990226	1581.276743	1275.174750	2528.888233
								1253.713483			1253.713483
								$\frac{1}{2} = 626.8567415'$			

面積計算書

工
区

ブ
ロ
ック

←

計
算
者

精
算
者



備
考

3. 保留地 4-1号
4. 番付 801(0)

点	①	②	③	④	⑤	⑥	③ × ⑤		② × ⑥		
	X	X-(定数)	X _{n-1} -X _{n+1}	Y	Y-(定数)	Y _{n-1} -Y _{n+1}	+	-	+	-	
		-148.470		-39	-39.740						
7	503.888	33.888	+ 28.832	743.166	3.166	+ 13.005		91202112		448.112440	
8	501.848	31.848	- 29.799	758.021	18.021	+ 16.537	537.007779			526.070376	
21	473.889	3.889	- 28.832	757.702	19.703	- 13.005	568.076896			50.576445	
22	473.016	3.016	+ 29.799	745.016	5.016	- 10.527		149.471784		49.875592	
								1105.084615	240.753896	100.452037	964.780816
								864.330779			864.330779
											1/2 = 432.1653895
		-148.470		-39	-39.750						
8	501.848	31.848	+ 26.544	758.021	8.021	+ 9.736		212.909424		310.072120	
9	500.433	30.433	- 27.287	769.439	19.439	+ 12.977	530.431993			394.929041	
20	474.561	4.561	- 26.544	770.998	20.998	- 9.736	557.370912			44.405896	
21	473.889	3.889	+ 27.287	759.703	9.703	- 12.977		264.765761		50.467553	
								1027.800205	477.675185	94.873449	705.001169
								610.127720			610.127720
											1/2 = 305.063860

面積計算書										工 X	ブ ロ ック	4	計 算 者	測 量 者	備 考	保 4-1号	保 4-2号
点	①	②	③	④	⑤	⑥	③ × ⑤		② × ⑥								
	X	X-(定数)	X _{n-1} -X _{n+1}	Y	Y-(定数)	Y _{n-1} -Y _{n+1}	+	-	+	-							
22	-148 473.016	-148.473 0.016	+ 13.622	-39 745.016	-39.744 1.016	- 15.561		13.839952	0.248976								
26	487.511	14.511	+ 15.154	744.142	0.142	+ 11.308		2.151868		164.090388							
25	488.170	15.170	+ 14.646	756.324	12.324	+ 11.381		180.497304		172.649770							
24	502.157	29.157	+ 13.678	755.523	11.523	+ 1.697		157.611594		49.479429							
8	501.848	28.848	- 28.268	758.021	14.021	+ 4.180	396.745628			120.584640							
21	473.889	0.889	- 28.832	759.703	15.703	- 13.005	452.748896		11.561445								
							849.094524	354.100718	11.810421	506.804227							
							494.993806			494.993806							
									$\times \frac{1}{2} = 247.496903$								
26	-148 487.511	-148.487 0.511	+ 15.518	-39 744.142	-39.743 1.142	- 13.158		17.721556	6.723738								
7	503.688	16.688	+ 14.646	747.166	0.166	+ 11.381		2.431236		189.926128							
24	502.157	15.157	- 15.518	755.523	12.523	+ 13.158	194.331914			199.435806							
25	488.170	1.170	- 14.646	756.324	13.324	- 11.381	195.143304		13.315770								
							389.475218	20.152792	20.039508	389.361934							
		432.16	- 247.49	^{m²} 184.67	...	保 4-2号	369.322426			369.322426							
									$\times \frac{1}{2} = 184.661213$								

面積計算書

工区

ブロック

4

計算者

精算者

備考

801-3
801-2

点	①	②	③	④	⑤	⑥	③ × ⑤		② × ⑥	
	X	X-(定数)	X _{n-1} -X _{n+1}	Y	Y-(定数)	Y _{n-1} -Y _{n+1}	+	-	+	-
21	-148 473.889	-148473 0.889	+ 27.523	-39 759.703	-39758 1.703	-9.010		46.871669	8.009890	
8	501.848	28.848	+ 27.041	758.021	0.021	+ 5.728		0.567861		165.241344
27	500.930	27.930	- 27.523	765.431	7.431	+ 9.010	204.523413			251.649300
28	474.325	1.325	- 27.041	767.031	9.031	- 5.728	244.207271		7.589600	
							448.730684	47.439530	15.599490	416.890644
							401.291154			401.291154
							401.291154 × 1/2 = 200.645577			
28	-148 474.325	-148474 0.325	+ 26.369	-39 767.031	-39765 2.031	- 5.567		53.555439	1.809275	
27	500.930	26.930	+ 26.108	765.431	0.431	+ 2.408		11.252548		86.847440
9	500.433	26.433	- 26.369	769.439	4.439	+ 5.567	117.051991			147.152511
20	474.561	0.561	- 26.108	770.998	5.998	- 2.408	156.595784		1.350888	
							273.647775	64.807987	3.160163	211.999751
							208.839788			208.839788
							208.839788 × 1/2 = 104.419894			

305.06^{m²} - 200.64^{m²} = 104.42^{m²} 801-2

面積計算書

工
区

ブ
ロ
ック

←

計
算
者



測
算
者



備
考

5. 番 # 799 (1)
6. 番 # 798 (ロ)

点	①	②	③	④	⑤	⑥	③ × ⑤		② × ⑥	
	X	X - (定数)	X _{n-1} - X _{n+1}	Y	Y - (定数)	Y _{n-1} - Y _{n+1}	+	-	+	-
9	500.433	-148.470 - 30.433	+23.957	-39 769.439	-39.760 - 9.439	+13.897				
10	498.518	28.518	74.963	784.895	24.895	+16.845	226.130	123		477.927 401
17	475.470	5.470	-23.957	786.284	26.284	-13.897	621.453	885		480.385 710
20	474.561	4.561	+24.963	770.998	10.998	-14.845	679.685	788		76.016 590
							274.543	074		76.830 045
							1,251.137	693		500.673 197 152.846 635 903.313 111
							750.466	476		750.466 476
							× 1/2 = 375.233 238 /			
10	498.518	-148.470 - 28.518	+21.017	-39 784.895	-39.780 - 4.895	+15.001				
11	496.487	26.487	-7.573	801.285	21.285	+17.191	102.878	215		427.798 518
12	495.945	25.945	-7.556	802.086	22.086	+0.644	54.766	305		455.338 017
23	493.931	23.931	-19.482	801.929	21.929	+0.901	56.451	816		16.908 580
18	476.463	6.463	-18.461	802.987	22.987	-15.645	427.720	798		21.561 831
19	475.470	5.470	+22.055	786.284	6.284	-18.092	474.363	007		101.113 635
							138.593	670		98.963 240
							967.801	906		241.491 835 200.076 875 921.406 946
							721.330	071		721.330 071
							× 1/2 = 360.665 035 5 /			

面積計算書							工区	ブロック	4	計算書	簿記書	備考	799-1	799-4
点	①	②	③	④	⑤	⑥	③ × ⑤	② × ⑥						
	X	X-(定数)	X _{n-1} -X _{n+1}	Y	Y-(定数)	Y _{n-1} -Y _{n+1}	+	-						
20	-148 474.561	-148474 0.561	+ 25.556	-39 770.998	-39769 1.998	- 6.868		51.060888	3.852948					
9	500.433	26.433	+ 25.208	769.439	0.439	+ 3.798		11.066312	100.392534					
29	499.769	25.769	- 25.556	774.796	5.796	+ 6.868	148.122576		176.981492					
30	474.877	0.877	- 25.208	776.307	7.307	- 3.798	184.194856		3.330846					
							332.317432	62.127200	7.183794	277.374026				
							270.190232			270.190232				
							270.190232	$\times \frac{1}{2} = 135.095116$						
30	-148 474.877	-148474 0.877	+ 24.299	-39 776.307	-39774 2.307	- 11.488		56.057793	10.074976					
29	499.769	25.769	+ 23.641	774.796	0.796	+ 8.588		18.818236	221.304172					
10	498.518	24.518	- 24.299	784.895	10.895	+ 11.488	264.737605		281.662784					
19	475.470	1.470	- 23.641	786.284	12.284	- 8.588	290.406044		12.624360					
							555.143649	74.876029	22.699336	502.966956				
							480.267620			480.267620				
							480.267620	$\times \frac{1}{2} = 240.133810$						

面積計算書

工
区

ブ
ロ
ック

4

計
算
者



精
算
者



備
考

スミナリⅠ
スミナリⅡ

点	①	②	③	④	⑤	⑥	③ × ⑤		② × ⑥	
	X	X - (定数)	X _{n-1} - X _{n+1}	Y	Y - (定数)	Y _{n-1} - Y _{n+1}	+	-	+	-
I	-148 442.046	-148.440 2.046	+2.221	-39 760.012	-39.750 10.012	-4.922		22.236652	10.070412	
1	444.366	4.366	+0.099	758.088	8.088	+2.998		0.800712	13.089268	
17	442.145	2.145	-2.320	763.010	13.010	+1.924	30.183200		4.126980	
							30.183200	23.037364	10.070412	17.216248
							7.145836		7.145836	
							x 1/2 = 3.572918			
Ⅱ	-148 488.934	-148.480 8.934	+5.310	-39 721.141	-39.720 1.141	-1.954		6.058710	17.457036	
4	491.934	11.934	-2.310	721.102	1.102	+1.915	2.545620		22.853610	
3	486.624	6.624	-3.000	723.056	3.056	+0.039	9.168000		0.258336	
							11.713620	6.058710	17.457036	23.111946
							5.654910		5.654910	
							x 1/2 = 2.827455			

面積計算書

工区

ブロック

4

計算者



精算者



備考

スミキリⅡ
スミキリⅢ

点	①	②	③	④	⑤	⑥	③ × ⑤		② × ⑥	
	X	X - (定数)	X _{n-1} - X _{n+1}	Y	Y - (定数)	Y _{n-1} - Y _{n+1}	+	-	+	-
Ⅱ	-148 506.446'	-148,500 6.446'	-2.641'	-39 720.911'	-39.720 0.911'	-2.957'	2.405951		19.060822	
5	503.434'	3.434'	-0.371'	720.951'	0.951'	+2.997'	0.352821		10.291698	
6	506.075'	6.075'	+3.012'	723.908'	3.908'	-0.040'		11.770896	0.243000	
							2.758772	11.770896	19.303822	10.291698
								9.012124	9.012124	
								$x \frac{1}{2} = 4.506062'$		
Ⅲ	-148 496.113'	-148,490 6.113'	-2.609'	-39 804.302'	-39,800 4.302'	+3.152'	11.223918		19.268176	
13	493.878'	3.878'	-2.182'	804.437'	4.437'	-2.373'	9.681534		9.262494	
23	493.931'	3.931'	+2.067'	801.929'	1.929'	-2.351'		3.987243	9.241781	
12	495.945'	5.945'	+2.556'	802.086'	2.086'	-0.644'		5.331816	3.828580	
11	496.487'	6.487'	+0.168'	801.285'	1.285'	+2.216'		0.215880	14.375192	
							20.905452	9.534939	22.272855	33.643368
							11.370513		11.370513	
								$x \frac{1}{2} = 5.6852565'$		

面積計算書

工
区

フ
ロ
ン
ク

LL

計
算
者



精
算
者



備
考

スミキリ
水路

点	①	②	③	④	⑤	⑥	③	×	⑤	②	×	⑥
	X	X-(定数)	X _{n-1} -X _{n+1}	Y	Y-(定数)	Y _{n-1} -Y _{n+1}	+		-	+		-
V	443.622	3.622	+3.096	807.480	7.480	+2.853			23.158080			10.333.566
14	446.617	6.617	-0.101	807.299	7.299	-3.034	0.737.199			20.075.978		
16	443.521	3.521	-2.995	804.446	4.446	+0.181	13.315.770					0.637.301
									14.052.769	23.158.080	20.075.978	10.970.867
										9.105.111	9.105.111	
												x/2 = 4.552.555
14	446.617	6.617	-49.690	807.299	7.299	+0.504	362.687.310					3.334.968
15	444.188	4.188	+47.314	804.941	4.941	-0.370			233.778.476	22.489.560		
23	493.931	53.931	+49.690	801.929	1.929	-0.504			98.852.010	27.181.224		
13	493.878	53.878	-47.314	804.437	4.437	+5.370	209.932.218					289.324.860
									572.619.528	329.630.484	49.670.784	292.659.828
									242.989.044			242.989.044
												x/2 = 121.494.522

面積計算書

工
区

ブ
ロ
ッ
ク

4

計
算
者



精
算
者



備
考

スリリV

点	①	②	③	④	⑤	⑥	③ × ⑤	② × ⑥
	X	X - (定数)	X _{n-1} - X _{n+1}	Y	Y - (定数)	Y _{n-1} - Y _{n+1}	+ -	+ -
14	⁻¹⁴⁸ 446.617	^{-128,440} 6.617	- 0.566	⁻³⁹ 207.299	^{-39,800} 7.299	+ 2.539	4,131,234	16,800,563
V	443.622	3.622	- 3.096	207.480	7.480	- 2.853	23,158,080	10,333,566
16	443.521	3.521	+ 0.566	204.446	4.446	- 2.539	2,516,436	8,939,819
15	444.188	4.188	+ 3.096	204.961	4.941	+ 2.853	15,297,336	11,948,364
							27,289,314	17,813,772
							9,475,542	19,273,385
							x 1/2 = 4,737,771	28,748,927
								9,475,542

計年 月 日	計算者	檢查者
--------------	-----	-----

B.NO. 4

各筆面積計算書

地番	算式	隅切	地積	摘要
1	巖# 801 (1) /		1823.69	
2	巖# 803-1 /		626.85	
3	保留地 4-1 号 /		432.16	4-1号 247.49 4-2号 184.67
4	巖# 801 (0) /		305.06	801-3 200.82 801-2 104.24 799-1 135.09
5	巖# 799 (1) /		375.23	799-2 242.14
6	巖# 798 (0) /		360.66	
		計	3923.65	
		全面積	3923.63	
		差	+ 0.02	
	平地面積		3491.49	5筆
	保留地面積		432.16	1筆
	大路面積 3号線 2.5M		121.49	