

街区略図

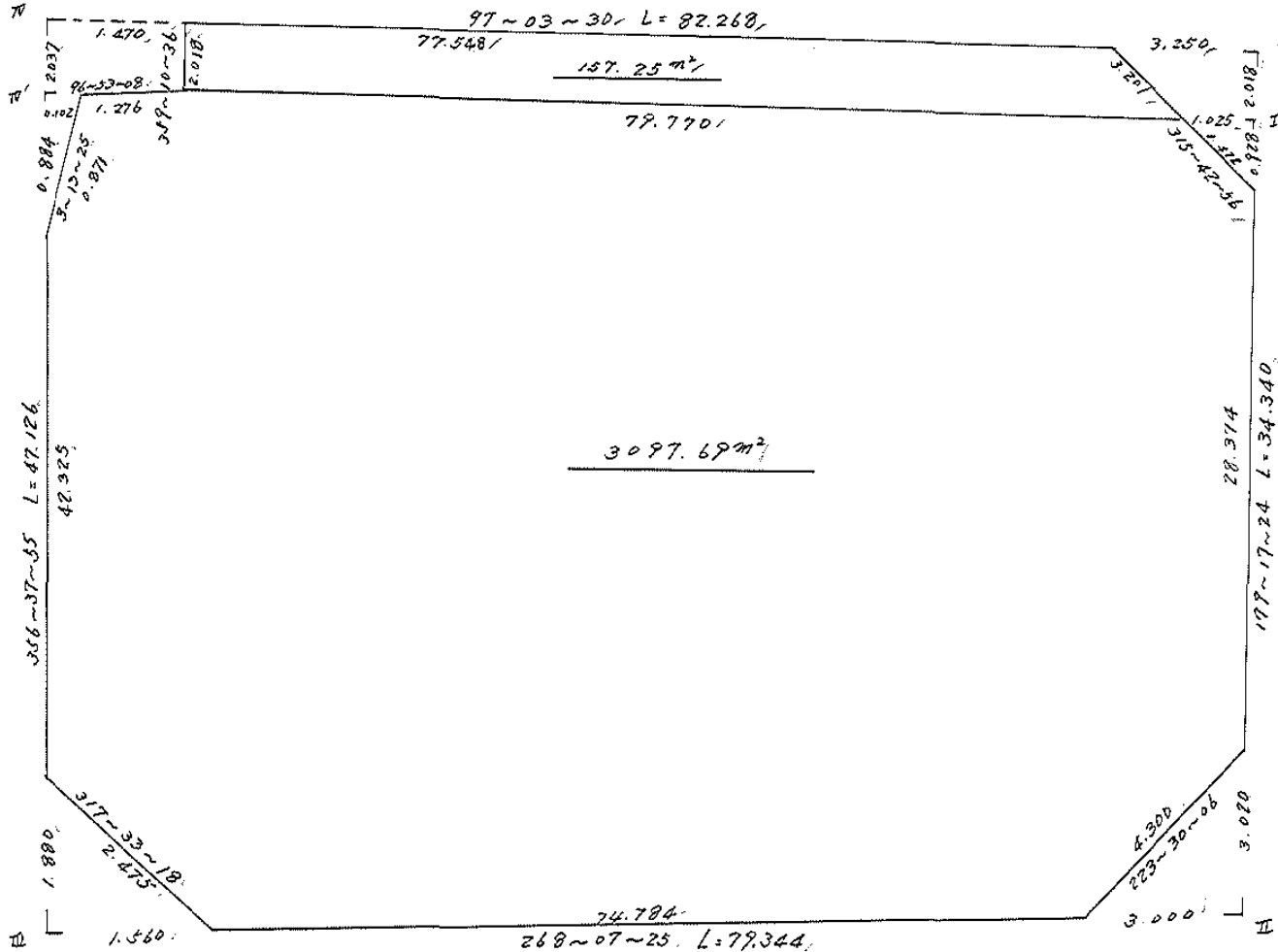
工区

ブロック

40

記入者

点検者



面積計算書

工
区

ブ
ロ
ック

40

計
算
者



精
算
者



備
考

全体

点	①	②	③	④	⑤	⑥	③ × ⑤		② × ⑥		
	X	X-(定数)	X _{n-1} -X _{n+1}	Y	Y-(定数)	Y _{n-1} -Y _{n+1}	+	-	+	-	
I	-148. 512.467	-148.400.0 12.467	+44.447	-37. 720.837	-37.720.0 0.837	-82.071			37.202138	1223.178157	
II	546.805	46.805	+36.836	720.411	0.411	+78.876			14.180696	3681.781180	
III	548.403	48.403	-44.447	788.713	78.713	+82.071	3443.003711			4054.43613	
IV	502.348	2.348	-36.836	802.482	82.482	-78.876	3046.44152			184.888608	
							6589.448263	42.382225	1208.168765	7706.344783	
							6437.176028			6437.176028	
										1/2 = 3268.488014	
			3268.48	部分 I	II	III	IV	505			
			-(4.74 + 4.43 + 1.47 + 2.70 + 157.24) = 3097.68								
					170.89						

地 計 算

画地略図

工区

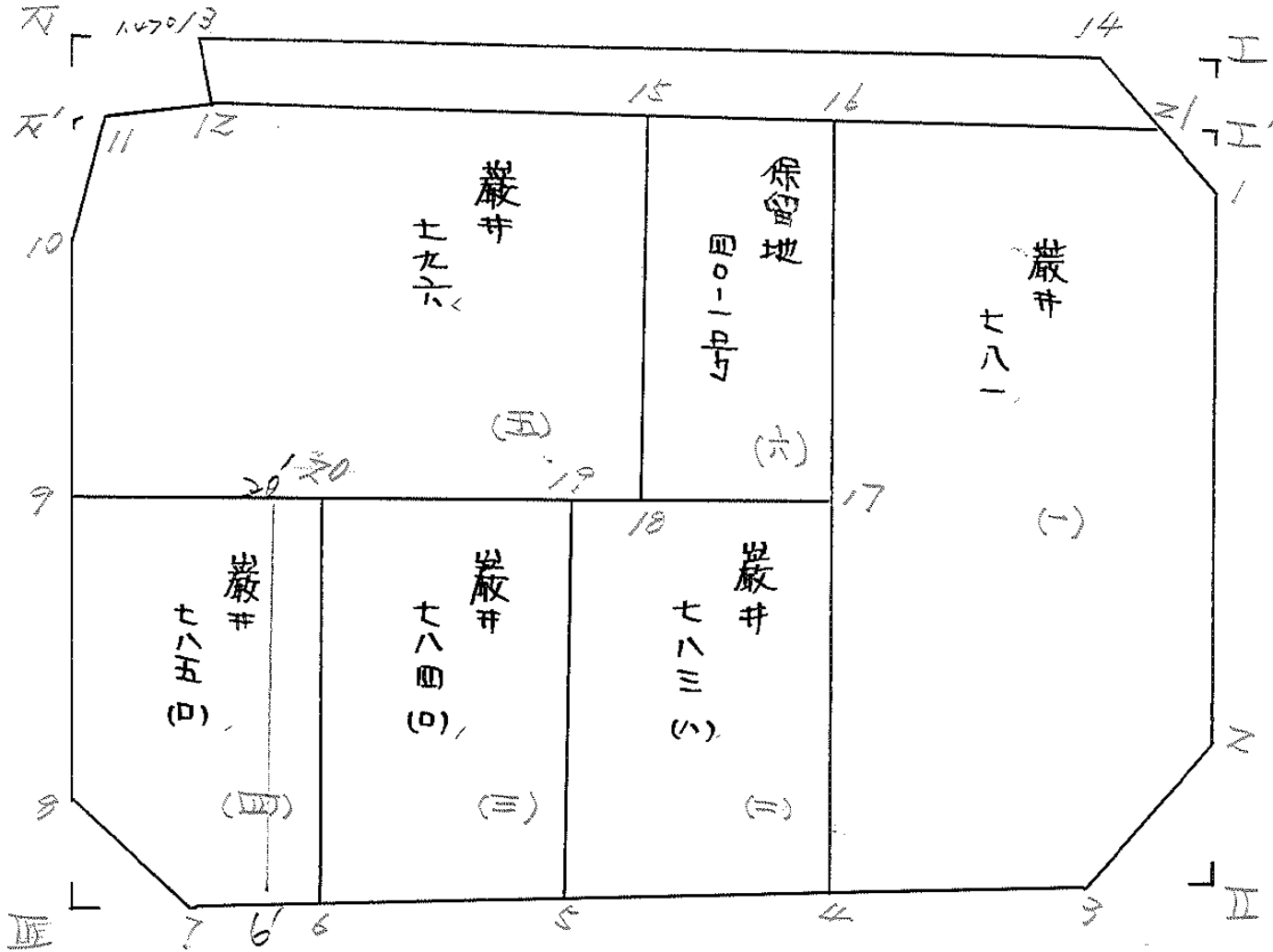
ブロック

40

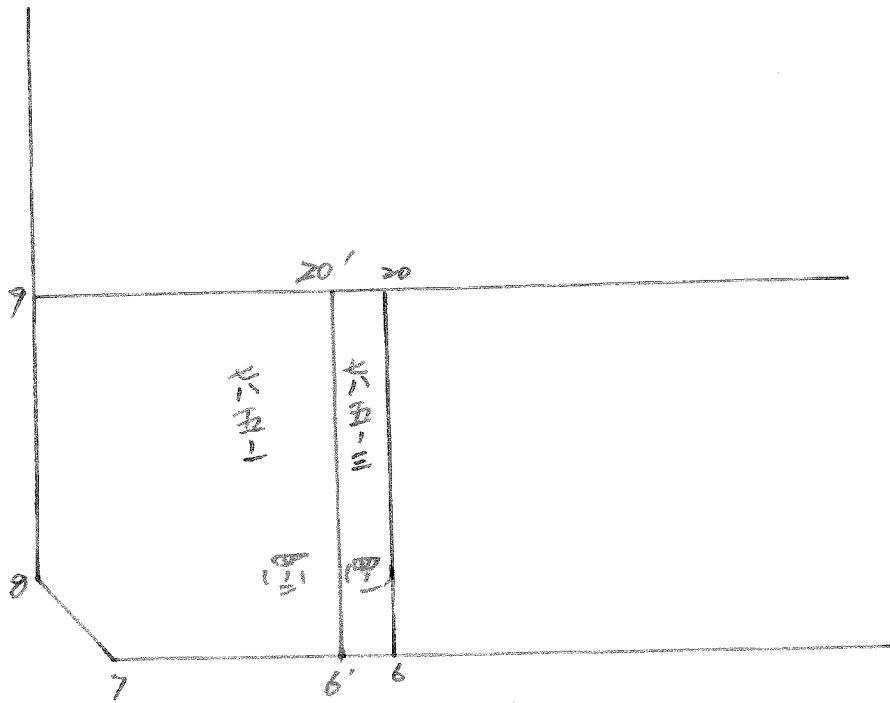
記入者



点検者



BNO. 40 分割計算



面積計算書

工区

ブロック

40

計算者



精算者

(5)

備考

1 巖井 781
2 巖井 783(1)

点	①	②	③	④	⑤	⑥	③ × ⑤		② × ⑥	
	X	X-(定数)	X _{n-1} -X _{n+1}	Y	Y-(定数)	Y _{n-1} -Y _{n+1}	+	-	+	-
1	⁻¹⁴⁸ 515.413	^{-148.510} 5.413	+29.425	⁻³⁹ 720.800	^{-39.720} 0.800	-1.379		23.540000	7.464527	
2	543.784	33.784	+31.490	720.449	0.449	+2.609		14.139010		88.142456
3	546.903	36.903	+3.844	723.409	3.409	+25.079		13.104196		925.490337
4	547.628	37.628	-35.629	745.528	25.528	+23.339	909.537112			878.199892
16	511.274	1.274	-33.269	746.748	26.748	-23.700	889.879212		30.193800	
21	514.359	4.359	+4.139	721.828	1.828	-25.948		7.566092	113.107332	
							1799.416324	58.349298	150.765659	1891.832685
							1741.067026			1741.067026
							x ^{1/2} = 870.533513			
4	⁻¹⁴⁸ 547.628	^{-148.520} 27.628	+21.232	⁻³⁹ 745.528	^{-39.740} 5.528	+15.567		117.370496		430.085076
5	548.160	28.160	-20.167	761.790	21.790	+16.950	439.438930			477.312000
19	527.461	7.461	-21.232	762.478	22.478	-15.567	477.252896		116.145387	
17	526.928	6.928	+20.167	746.723	6.223	-16.950		125.499241	117.429600	
							916.691826	242.869737	233.574987	907.397076
							673.822089			673.822089
							x ^{1/2} = 336.9110445			

面積計算書

工区

ブロック

40

計算者

精算者

備考

3 崖 # 784 (口)
4 崖 # 785 (口)

点	①	②	③	④	⑤	⑥	③ × ⑤		② × ⑥	
	X	X - (定数)	X _{n-1} - X _{n+1}	Y	Y - (定数)	Y _{n-1} - Y _{n+1}	+	-	+	-
5	-148 548.160	-148.520 28.160	+21.191	761.790	-39.760 1.790	+14.306		37.931890		402.856960
6	548.652	28.652	-20.207	776.784	16.784	+15.672	339.154288			449.034144
20	527.953	7.953	-21.191	777.462	17.462	-14.306	370.037242		113.775618	
19	527.461	7.461	+20.207	762.478	2.478	-15.672		50.072946	116.928792	
							709.191530	88.004836	230.704410	851.891104
							621.186694			621.186694
							x ^{1/2} = 310.593347			
6	-148 548.652	-148.520 28.652	+21.399	776.784	-39.770 6.784	+20.691		145.170816		592.838532
7	549.352	29.352	-1.126	798.153	28.153	+23.039	31.700278			676.240728
8	547.526	27.526	-20.629	799.823	29.823	+2.777	615.218667			76.439702
9	528.723	8.723	-19.573	800.930	30.930	-22.361	605.392890		195.055003	
20	527.953	7.953	+19.929	777.462	7.462	-24.416		148.710198	192.033138	
							1,252.311835	793.881014	387.088141	1345.518962
							958.430821			958.430821
							x ^{1/2} = 479.2154105			

面積計算書

工
区

ブ
ロ
ック

60

計
算
者

精
算
者

備
考

(6-1) 785-3
(6-2) 785-1

点	①	②	③	④	⑤	⑥	③ × ⑤		② × ⑥	
	X	X-(定数)	X _{n-1} -X _{n+1}	Y	Y-(定数)	Y _{n-1} -Y _{n+1}	+	-	+	-
20	-168, 527.953	-148.520, 7.953	+ 20.625	-37, 777.462	-37.770, 7.462	- 2.946		153.903750	23.429538	
6	548.652	28.652	+ 20.773	776.784	6.784	+ 1.590		140.924032		45.556680
6'	548.726	28.726	- 20.625	779.052	9.052	+ 2.946	186.697500			84.626796
20'	528.027	8.027	- 20.773	779.730	9.730	- 1.590	202.121290		12.762930	
							388.818790	294.827782	36192468	130.183476
							93.991008			93.991008
								× 1/2 = 46.995504		
20'	-168, 528.027	-148.520, 8.027	+ 20.003	-37, 779.730	-37.770, 9.730	- 21.878		194.629190	175.614706	
6'	548.726	28.726	+ 21.325	779.052	9.052	+ 18.423		193.033900		529.319098
7	549.352	29.352	- 1.200	798.153	28.153	+ 20.771	33.783600			609.670392
8	547.526	27.526	- 20.629	799.823	29.823	+ 2.777	615.218667			76.439702
9	528.723	8.723	- 19.499	800.930	30.930	- 20.093	603.104070		175.271239	
							1252.106337	387.663090	350.885945	1215.329192
							864.443747			864.443247
								× 1/2 = 432.221623		

面積計算書

工区

ブロック

40

計算者



精算者



備考

5 番井 796
6 保留地 40-1号

点	①	②	③	④	⑤	⑥	③ × ⑤		② × ⑥	
	X	X-(定数)	X _{n-1} -X _{n+1}	Y	Y-(定数)	Y _{n-1} -Y _{n+1}	+	-	+	-
9	528.723 528.723	-148,500 28.723	-22.090	-39 800.930	-39,750 50.930	+42.812	1,125.043700			1,229.689076
10	505.274 505.274	5.274	-24.319	802.310 802.310	52.310	+1.331	1,272.126890			7,019.6684
11	504.604 504.604	4.404	-0.717	802.261 802.261	52.261	-1.316	37.471137		5.795664	
12	504.557 504.557	4.557	+5.218	800.994 800.994	50.994	-42.175	266.086692	192.191475		
15	509.622 509.622	9.622	+22.807	760.086 760.086	10.086	-41.496	230.031402	399.274512		
18	527.364 527.364	27.364	+19.101	759.498 759.498	9.498	+40.844	181.421298			1,117.655216
							2,434.641727	677.539392	597.261651	2,354.363986
							1757.102335			1,757.102335
							$\times \frac{1}{2} = 878.5511675$			
15	509.622 509.622	-148,500 9.622	-16.090	-39 760.086	-39,740 20.086	-12.750	323.183740		122.680500	
16	511.274 511.274	11.274	+17.306	746.748 746.748	6.748	-13.863	116.780888	156.291462		
17	526.928 526.928	26.928	+16.090	746.223 746.223	6.223	+12.750	100.128070		343.332000	
18	527.364 527.364	27.364	-17.306	759.498 759.498	19.498	+13.863	337.432388		379.347132	
							660.616128	216.908958	278.971962	722.679132
							443.707170			443.707170
							$\times \frac{1}{2} = 221.853585$			

面積計算書

工区

ブロック

40

計算者

精算者

備考

スミタリⅠ スミタリⅡ
スミタリⅢ

点	①	②	③	④	⑤	⑥	③ × ⑤		② × ⑥		
	X	X-(定数)	X _{n-1} -X _{n+1}	Y	Y-(定数)	Y _{n-1} -Y _{n+1}	+	-	+	-	
I	-148. 512.467	-148.5100 2.467	+3.345	-39. 720.837	-39.720.0 0.837	-3.263			2.799765	8.049821	
1	515.413	5.413	-0.399	720.800	0.800	+3.226	0.319200				17.462338
14	512.068	2.068	-2.946	724.063	4.063	+0.037	11.969598				0.076516
							12.288798	2.799765	8.049821	17.438854	
							9.489033		1/2=4.7445165	9.489033	
7	-148. 549.352	-148.540.0 9.352	+1.877	-39. 799.153	-39.790.0 9.153	-0.110			15.303181	1.028720	
Ⅲ	549.403	9.403	-1.826	799.713	9.713	+1.670	17.734938				15.703010
8	547.526	7.526	-0.051	799.823	9.823	-1.560	0.500973			11.740560	
							18.236911	15.303181	12.769280	15.703010	
							2.933730				2.933730
									1/2=1.066865		
2	-148. 543.784	-148.540.0 3.784	-0.098	-39. 720.449	-39.720.0 0.449	-2.998	0.044008			11.744432	
Ⅱ	546.805	6.805	+3.119	720.411	0.411	+2.960			1.281909		20.142800
3	546.903	6.903	-3.021	723.409	3.409	+0.038	10.298589				0.262314
							10.302581	1.281909	11.364432	20.405114	
							9.060682				9.060682

面積計算書

工
区

プロ
メ
ク

40

計
算
者

()

精
算
者

()

備
考

スミキリ 70

水路 6号線 2M

点	①	②	③	④	⑤	⑥	③ × ⑤		② × ⑥	
	X	X - (定数)	X _{n-1} - X _{n+1}	Y	Y - (定数)	Y _{n-1} - Y _{n+1}	+	-	+	-
10	-148. 505.274	-148.500.0 5.274	-2.046	-39. 802.310	-39.800.0 2.310	+0.221	4.726260			1.165454
11	502.358	2.358	-2.735	802.482	2.482	-1.287	6.788270		3.034746	
13	502.539	2.539	+2.199	801.023	1.023	-1.488		2.249577	3.778032	
12	504.557	4.557	+1.865	800.994	0.994	+1.238		1.853810		5.641566
11	504.404	4.404	+0.717	802.261	2.261	+1.316		1.621137		5.795664
							11.514530	5.724424	6.812778	12.602784
							5.790006			5.790006
								1/2 = 2.895003		
								≅ 2.90		
12	-148. 504.557	-148.500.0 4.557	-11.820	-39. 800.994	-39.720.0 20.994	+78.195	857.348080			360.891615
13	502.539	2.539	+7.511	801.023	81.023	-76.931		608.563753	195.327809	
14	512.068	12.068	+11.820	724.063	4.063	-79.195		48.024660	855.725260	
21	514.359	14.359	-7.511	721.828	1.828	+76.931	13.730108			1104.652228
							871.079188	656.588413	1151.053068	1465.543844
							314.490775			314.490775
								1/2 = 157.2453875		
								≅ 157.25		

計年 月 算日	計 算 者	檢 查 者
---------------	-------------	-------------

B. NO.

40

各筆面積計算書

地番	算式	開切	地積	摘要
1	巖井 781		270.43	
2	" 783 (A)		336.91	
3	" 784 (B)		310.49	
4	" 785 (C)		479.21	785-3 46.99 785-1 432.22
5	" 786		278.44	
6	保留地 40-1号		221.24	
		合計	2087.64	
		全面積	2087.69	
			差 -0.05	
	宅地面積		2874.79	5筆
	保留地面積		221.24	1筆
	水路6号線	2.11	1.57	2.5