

街区略図

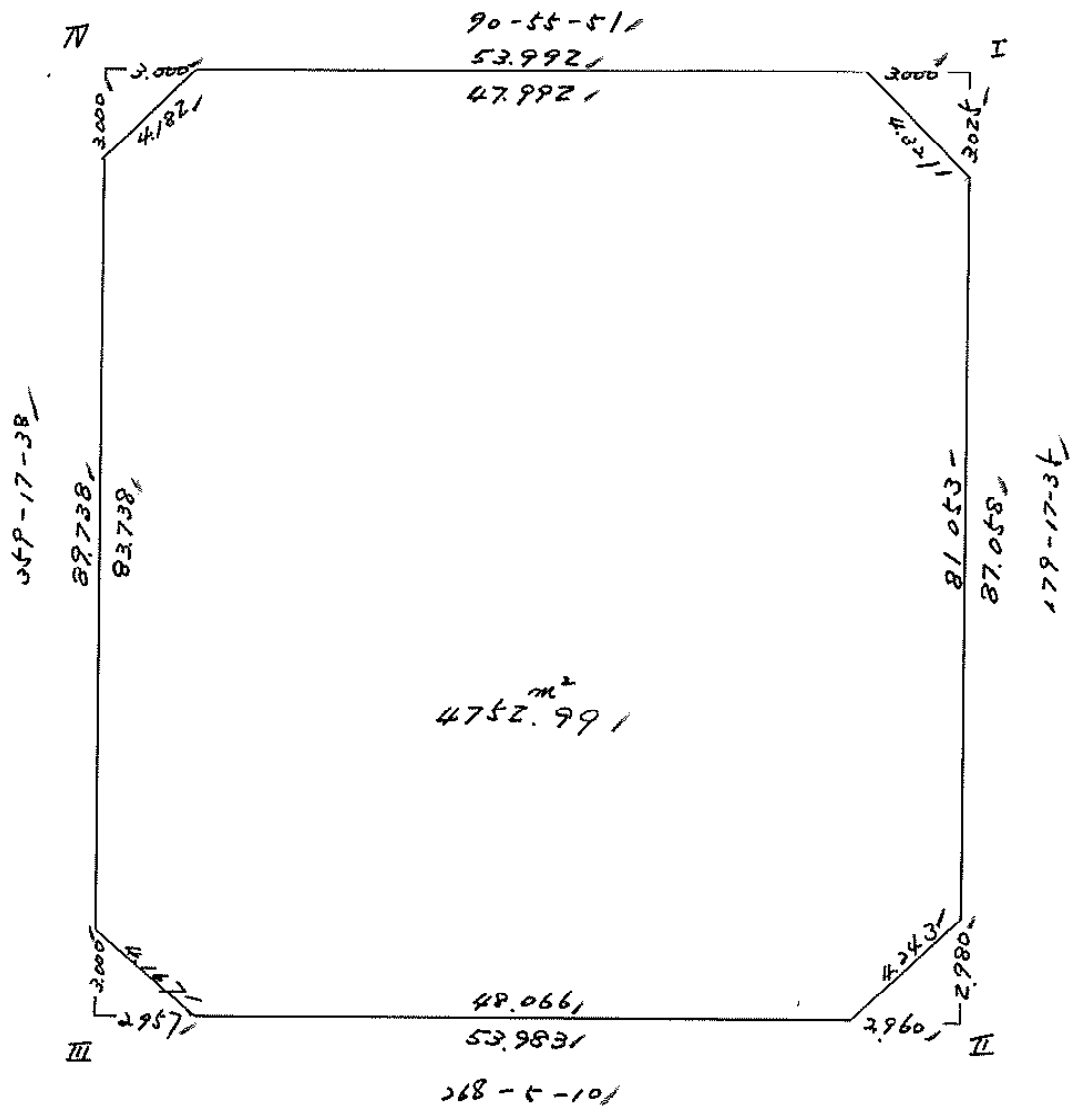
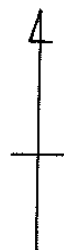
工区

ブロック

41

記入者

点検者



面積計算書

工区

ブロック

41

計算者



精算者



備考

全体、スミ切工

点	①	②	③	④	⑤	⑥	③ × ⑤		② × ⑥	
	X	X-(定数)	X _{n-1} -X _{n+1}	Y	Y-(定数)	Y _{n-1} -Y _{n+1}	+	-	+	-
I	-148,513.734	$\frac{-148,510}{3.734}$	+87.928	-39,660.838	$\frac{-39,650}{10.838}$	-55.059			952,963,664	205,590,306
II	600.785	$\frac{90.785}{9.785}$	+88.854	659.764	$\frac{9.764}{9.764}$	+52.879			867,570,456	4800,620,015
III	607.588	$\frac{92.588}{9.258}$	-87.928	713.717	$\frac{63.717}{63.717}$	+55.059	5602,508,376			5097,802,692
IV	512.857	$\frac{2.857}{2.857}$	-88.854	714.873	$\frac{64.873}{64.873}$	-52.879	5759,782,842		151,075,303	
							11362,291,218	1820,534,120	356,665,609	9898,422,707
							9541,757,098			9541,757,098
							$\times \frac{1}{2} = 4770,878,549$			
19	-148,513.685	$\frac{-148,510}{3.685}$	-3.025	-39,663.838	$\frac{-39,660}{3.838}$	+0.037	11,609,950			0,136,345
I	513.734	$\frac{3.734}{3.734}$	+3.074	660.838	$\frac{0.838}{0.838}$	-3.037		2,576,012	11,340,158	
I	516.759	$\frac{6.759}{6.759}$	-0.049	660.801	$\frac{0.801}{0.801}$	+3.000	0,039,249			20,277,000
							11,649,199	2,576,012	11,340,158	20,413,345
							9,073,187			9,073,187
							$\times \frac{1}{2} = 4,536,593,5$			
							$= 4.54 =$			
	全体 - (スミ切 I + II + III + IV) = 4770.87 - 17.88 = 4752.99									
	(4.54 + 4.41 + 4.43 + 4.50) = 17.88									

面積計算書

工
区

ブ
ロ
ック

41

計
算
者



精
算
者



備
考

スミ切 II, III, IV

点	①	②	③	④	⑤	⑥	③ × ⑤		② × ⑥		
	X	X-(定数)	X _{n-1} -X _{n+1}	Y	Y-(定数)	Y _{n-1} -Y _{n+1}	+	-	+	-	
6	-148,597.806	-148.590 - 7.806	-0.099	-39,659.801	-39.650 - 9.801	-2.958	0.970	299		23,090.148	
II	600.785	10.785	+3.078	659.764	9.764	+2.921			30,053.592		31,502.985
7	600.884	10.884	-2.979	662.722	12.722	+0.037	37,898.838				0.402.708
							38,869.137	30,053.592	23,090.148	31,905.693	
							8,815.545				8,815.545
							$\times \frac{1}{2} = 4,407.7725 = 4.4$				
11	-148,602.489	-148.590 - 12.489	+3.000	-39,710.762	-39.710 - 0.762	-0.037			2,286.000	0.462.093	
III	602.588	12.588	-2.901	713.717	3.717	+2.992	10,783.017				37,663.296
12	599.588	9.588	-0.099	713.754	3.754	-2.955	0.371.646			28,332.540	
							11,154.663	2,286.000	28,794.633	37,663.296	
							8,868.663				8,868.663
							$\times \frac{1}{2} = 4,434.3315 = 4.43$				
16	-148,515.857	-148.510 - 5.857	-0.049	-39,714.786	-39.710 - 4.786	+3.000	0.234.514				17,571.000
IV	512.857	2.857	-2.951	714.823	4.823	-2.963	14,232.673			8,465.291	
17	512.906	2.906	+3.000	711.823	1.823	-0.037			5,469.000	0.107.522	
							14,467.187	5,469.000	8,592.813	17,571.000	
							8,998.187				8,998.187

$\times \frac{1}{2} = 4,499.0935 = 4.50$
三和測量建設株式会社

地 地 計 算

画地略図

工区

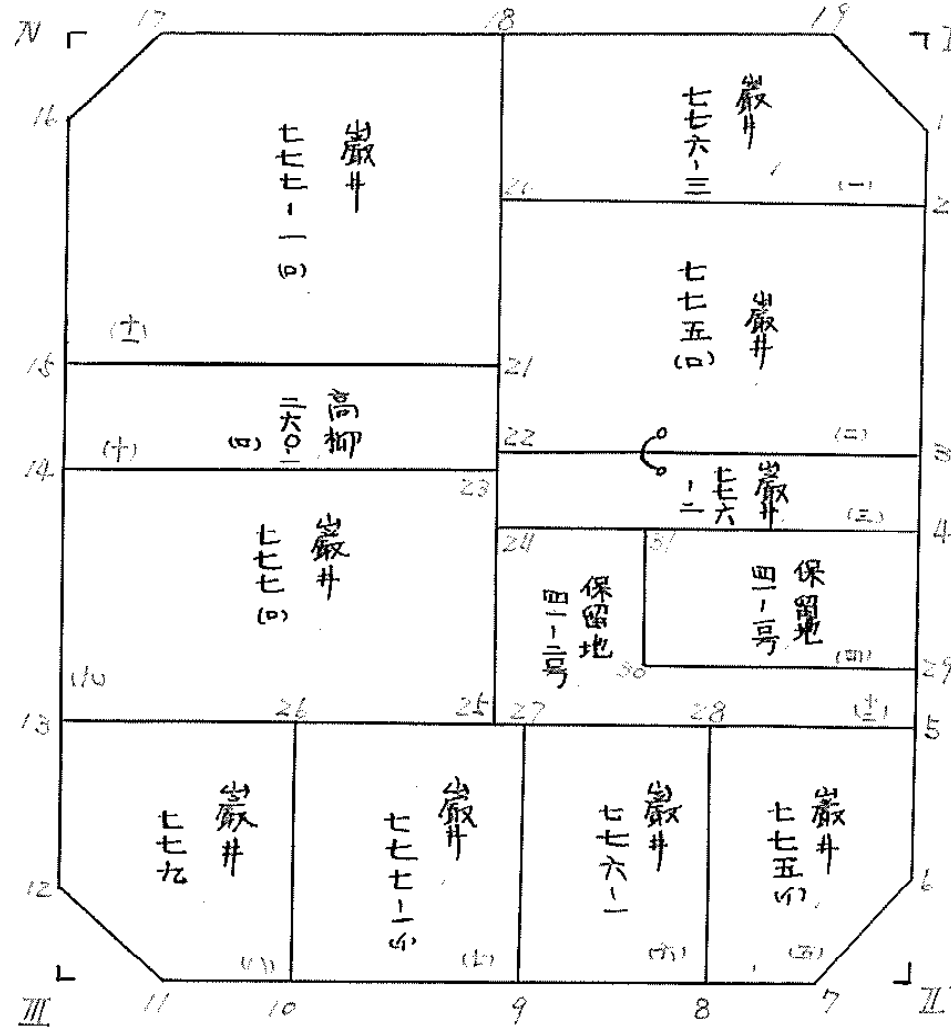
ブロック

41

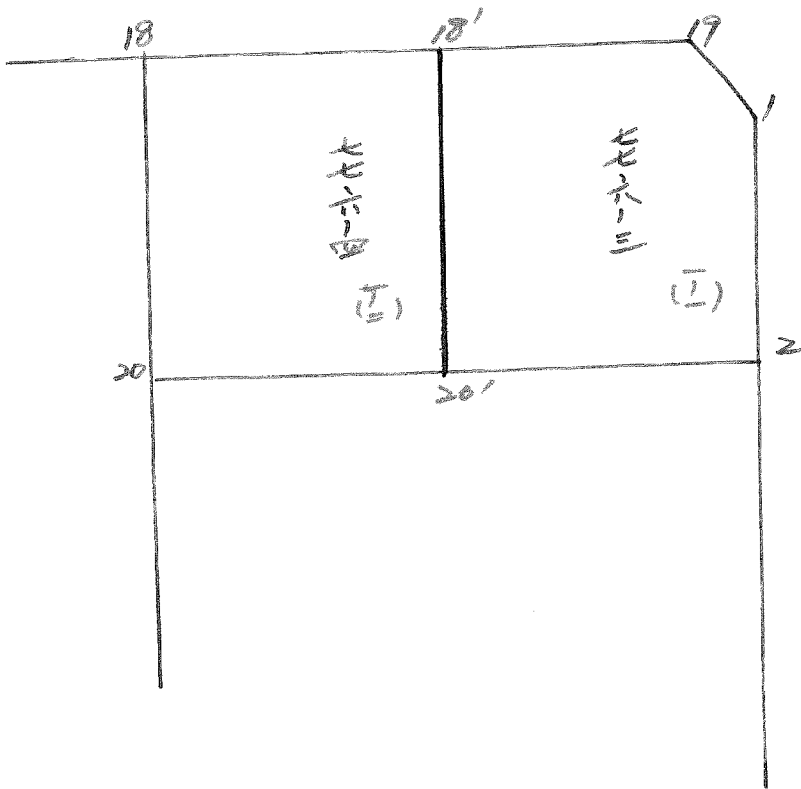
記入者

三井

点検者



BND. 41 分割計算



面積計算書

工区

ブロック

41

計算者

(印)

精算者

(印)

備考

(-) 巖井 776-7
(=) 巖井 775(2)

点	①	②	③	④	⑤	⑥	③ × ⑤		② × ⑥	
	X	X-(定数)	X _{n-1} -X _{n+1}	Y	Y-(定数)	Y _{n-1} -Y _{n+1}	+	-	+	-
1	-148,510.459	-148,510 6.759	+ 13.736	-39,660.801	-39,660 0.801	- 3.169		11.002536	21,419.271	
2	527.421	17.421	+ 11.002	660.669	0.669	+ 26.846		7.360338		467.684166
20	527.761	17.761	- 14.125	687.647	27.647	+ 27.157	390.513875			482.335477
18	513.286	3.286	- 14.076	687.826	27.826	- 23.809	391.678776		78.474464	
19	513.685	3.685	+ 3.463	663.838	3.838	- 27.025		13.290994	99.587125	
							782.192667	31.653868	199.480860	950.019643
							750.538783			750.538783
							$x \frac{1}{2} = 375.2693915$ (変更箇所あり)			
2	-148,527.421	-148,520 7.421	+ 22.345	-39,660.669	-39,660 0.669	- 27.258		14.948805	202.281618	
3	550.106	30.106	+ 23.023	660.389	0.389	+ 26.698		8.955947		803.769988
22	550.444	30.444	- 22.345	687.367	27.367	+ 27.258	611.515615			829.842552
20	527.761	7.761	- 23.023	687.647	27.647	- 26.698	636.516881		207.203178	
							1248.032496	23.904752	409.484796	1,633.612540
							1224.127744			1,224.127744
							$x \frac{1}{2} = 612.063872$			

面積計算書

工
区

ブ
ロ
ック

41

計
算
者

精
算
者

備
考

(1-1) 776-3
(1-2) 776-4

点	①	②	③	④	⑤	⑥	③ × ⑤		② × ⑥	
	X	X-(定数)	X _{n-1} -X _{n+1}	Y	Y-(定数)	Y _{n-1} -Y _{n+1}	+	-	+	-
18'	^{-148,} 513.511	^{-148,500} 13.511	- 13.910	^{-39,} 676.605	^{-39,660} 14.605	- 10.601	203.155550		143.230111	
19	513.685	13.685	+ 3.248	667.838	3.838	- 13.804		12.465824	188.907740	
1	516.759	16.759	+ 13.736	660.801	0.801	- 3.169		11.002536	53.109271	
2	527.421	27.421	+ 10.836	660.669	0.669	+ 13.638		7.249284		373.967598
20'	527.595	27.595	- 13.910	674.639	14.439	+ 13.936	200.846490			384.563920
							404.002040	30.717644	285.247122	758.531518
							373.284396			373.284396
								× 1/2 = 186.642198		
18	^{-148,} 513.296	^{-148,500} 13.296	- 14.250	^{-39,} 687.826	^{-39,670} 17.826	- 13.042	254.020500		173.406432	
18'	513.511	13.511	+ 14.299	676.605	4.605	- 13.387		65.846895	180.871757	
20'	527.595	27.595	+ 14.250	676.639	4.439	+ 13.042		63.255750		359.893990
20	527.761	27.761	- 14.299	687.647	17.647	+ 13.387	252.334453			371.636507
							506.354953	129.102645	354.278189	731.530497
							377.252308			377.252308
								× 1/2 = 188.626154		

面積計算書

工 41 計 巖井 (三) 未 (四)

点	① X	② X - (定数)	③ X _{n-1} - X _{n+1}	④ Y	⑤ Y - (定数)	⑥ Y _{n-1} - Y _{n+1}	⑦ +	⑧ -	⑨ +	⑩ -
		-148,550-			-39,660-					
3	-148,550.106	0.106	+2.441	-39,660.389	0.389	-27.012		0.949 549		2.863 272
4	552.885	2.885	+3.117	660.355	0.355	+26.944		1.106 535		77.733 440
24	553.223	3.223	-2.441	687.333	27.333	+27.012	66.719 853			87.059 676
27	550.444	0.444	-3.117	687.367	27.367	-26.944	85.302 939			11.963 136
							152.022 792	2.056 084	14.826 408	164.793 116
							149.966 708			149.966 708
							$\times \frac{1}{2} = 74.983 354$			
		-148,550-			-39,660-					
4	-148,552.885	2.885	+18.118	-39,660.355	0.355	-27.206		6.431 890		78.489 310
5	571.341	21.341	+18.804	660.127	0.127	+26.750		2.388 108		570.871 750
25	571.689	21.689	-18.118	687.105	27.105	+27.206	491.088 390			590.070 934
24	553.223	3.223	-18.804	687.333	27.333	-26.750	513.969 732			86.215 250
							1005.058 122	8.819 998	164.704 560	1160.942 684
							996.238 124			996.238 124
							$\times \frac{1}{2} = 498.119 062$			

面積計算書

工
区

フ
ロ
ック

41

計
算
者



精
算
者



備
考

(四)
保 41-1号

点	①	②	③	④	⑤	⑥	③ × ⑤		② × ⑥	
	X	X-(定数)	X _{n-1} -X _{n+1}	Y	Y-(定数)	Y _{n-1} -Y _{n+1}	+	-	+	-
4	-148 552.885	-148.550 2.885	+ 15.764	-37. 660.355	-37.660 0.355	- 15.486			5.596220	44.67710
29	568.841	18.841	+ 16.145	660.158	0.158	+ 15.092			2.550910	284.248272
30	569.030	19.030	- 15.764	675.447	15.447	+ 15.486	243.506508			294.698580
31	553.077	3.077	- 16.145	675.644	15.644	- 15.092	252.572380			46.438084
							486.078888	8.147130	91.115194	579.046952
							487.931758			487.931758
									1/2 = 243.965879	

面積計算書

工区

ブロック

41

計算者

精算者

備考

(正) 保留地 41-2号

点	①	②	③	④	⑤	⑥	③ × ⑤		② × ⑥	
	X	X-(定数)	X _{n-1} -X _{n+1}	Y	Y-(定数)	Y _{n-1} -Y _{n+1}	+	-	+	-
24	-148. 553.223	-148.550 3.223	- 18.612	-39. 687.333	-39.660 27.333	- 11.461	508.721796		36.938803	
31	553.077	3.077	+ 15.807	675.646	15.646	- 11.886		247.284708	36.573222	
30	569.030	19.030	+ 15.764	675.447	15.447	- 15.486		243.506508	294.688580	
29	568.841	18.841	+ 2.311	660.158	0.158	- 15.320		0.365128	288.644120	
5	571.341	21.341	+ 2.848	660.127	0.127	+ 26.947		0.361686		575.075907
25	571.689	21.689	- 18.118	687.105	27.105	+ 27.206	491.688390			590.070934
							999.810186	491.518050	656.854725	1165.146861
							508.292136			508.292136
								1/2 = 254.146068		

面積計算書

工区

ブロック

41

計算者



精算者



備考

(五) 巖井 775(4), 巖井 776-1
(六)

点	①	②	③	④	⑤	⑥	③ × ⑤		② × ⑥	
	X	X - (定数)	X _{n-1} - X _{n+1}	Y	Y - (定数)	Y _{n-1} - Y _{n+1}	+	-	+	-
5	-148,571.341	^{-148,570} 1.341	+ 26.299	-39,660.127	^{-39,650} 10.127	- 13.220		266.329973	17.728020	
6	597.806	27.806	+ 29.543	659.801	9.801	+ 2.595		289.550943		72.156570
7	600.884	30.884	+ 3.410	662.722	12.722	+ 12.854		43.382020		396.982936
8	601.216	31.216	- 29.377	672.655	22.655	+ 10.299	665.535935			321.493584
28	571.507	1.507	- 29.875	673.021	23.021	- 12.528	687.252375		18.879696	
							1353.288310	599.262936	36.607716	790.633090
							754.025374			754.025374
							$\times \frac{1}{2} = 377.012687$			
28	-148,571.507	^{-148,570} 1.507	+ 29.541	-39,693.021	^{-39,670} 3.021	- 13.360		89.243361	20.133520	
8	601.216	31.216	+ 30.143	672.655	2.655	+ 12.626		80.029665		394.133216
9	601.650	31.650	- 29.541	685.647	15.647	+ 13.360	462.228027			422.844000
27	571.675	1.675	- 30.143	686.015	16.015	- 12.626	482.740145		21.148550	
							944.968172	169.273026	41.282070	816.977216
							775.695146			775.695146
							$\times \frac{1}{2} = 387.847573$			

面積計算書

工区

ブロック

41

計算者



精算者



備考

(七) 巖井 777-141 (イ) 巖井 779

点	①	②	③	④	⑤	⑥	③ × ⑤		② × ⑥		
	X	X - (定数)	X _{n-1} - X _{n+1}	Y	Y - (定数)	Y _{n-1} - Y _{n+1}	+	-	+	-	
9	148,601.650	^{-148,570} 31.650	+ 30.409	39,685.647	^{-39,680} 5.647	+ 12.623			171.719623		399.517950
10	602.084	32.084	- 29.808	698,638	18.638	+ 13.363	555.561504				428.738492
26	571,847	1.842	- 30.409	699,010	19.010	- 12.623	578.075090			23.251566	
27	571,675	1.675	+ 29.808	686,015	6.015	- 13.363			179.295120	22.383025	
							1,133.636594	351.014743	45.634591	828.256442	
							782.621851			782.621851	
							$\times \frac{1}{2} = 391.3109255$				
10	148,602.084	^{-148,570} 32.084	+ 30.647	39,698.638	^{-39,690} 8.638	+ 11.752			264.728786		377.051168
11	602.489	32.489	- 2.496	710,767	20.762	+ 15.116	51.821952				491.103724
12	599.588	29.588	- 30.452	713,754	23.754	+ 3.332	723.356808				98.587216
13	572.037	2.037	- 27.746	714,094	24.094	- 14.744	668.512124			30.033528	
26	571.847	1.842	+ 30.047	699,010	9.010	- 15.456			270.723470	28.469952	
							1,443.690884	535.452256	58.503480	966.742108	
							908.238628			908.238628	
							$\times \frac{1}{2} = 454.119314$				

面積計算書

工区

ブロック

41

計算者



精算者



備考

(七) 巖井 777(四), (八) 高柳 760-1(四)

点	①	②	③	④	⑤	⑥	③ × ⑤		② × ⑥	
	X	X-(定数)	X _{n-1} -X _{n+1}	Y	Y-(定数)	Y _{n-1} -Y _{n+1}	+	-	+ -	
13	-148.572.037	-148.550 22.037	20.621	-39.714.094	-39.680 34.094	+ 27.247	703.052374		600.442139	
14	551.068	1.068	- 21.323	714.352	34.352	- 26.730	732.487696		28.547640	
23	550.714	0.714	+ 20.621	687.364	7.364	- 27.247		151.853044	19.454358	
25	571.689	21.689	+ 21.323	687.105	7.105	+ 26.730		151.499915	579.746970	
							1435.540070	303.352959	48.001998	1,180.189109
							1,132.187114			1,132.187114
							$\times \frac{1}{2} = 566.093555$			
14	-148.551.068	-148.540 11.068	6.217	-39.714.352	-39.680 34.352	+ 27.069	213.566384		299.599692	
15	544.497	4.497	- 6.925	714.433	34.433	- 26.907	238.448525		121.000779	
21	544.143	4.143	+ 6.217	687.445	7.445	- 27.069		46.285565	112.145867	
23	550.714	10.714	+ 6.925	687.364	7.364	+ 26.907		50.995700	288.281598	
							452.014909	97.281265	233.147646	587.881290
							354.733644			354.733644
							$\times \frac{1}{2} = 177.366822$			

面積計算書

工区

ブロック

41

計算者



精算者



備考

(土) 巖井 777-1 (B)

点	①	②	③	④	⑤	⑥	③ × ⑤		② × ⑥	
	X	X-(定数)	X _{n-1} -X _{n+1}	Y	Y-(定数)	Y _{n-1} -Y _{n+1}	+	-	+	-
15	-148.544497	-148.510 34.497	-28.286	-39.714.433	-39.680 34.433	+27.341	973.971.838			943.182.477
16	515.857	5.857	-31.591	714.786	34.786	-2.610	1098.924.526		15.286.970	
17	517.906	7.906	-2.561	711.823	31.823	-26.960	81.498.703		78.345.760	
18	513.296	3.296	+31.237	687.826	7.826	-24.378		244.460.762	80.349.888	
21	544.143	34.143	+31.201	687.445	7.445	+26.607		232.291.445		908.442.801
							2154,395.067	476.752.207	173.982.418	1851.625.278
							1677.642.860			1677.642.860
							x/2 = 838.821.430			

