

画地略図

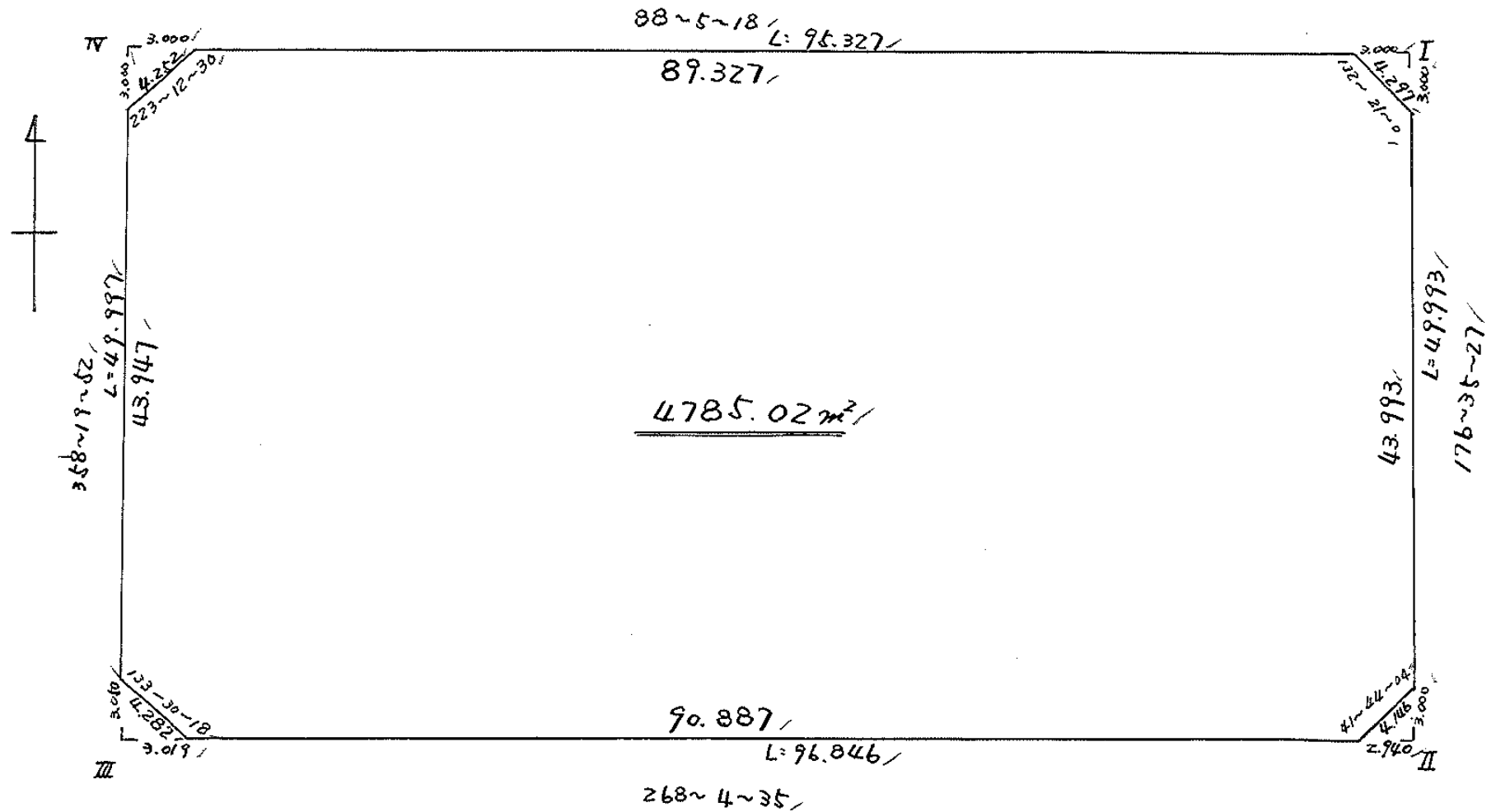
工区

ブロック 34

記入者

点検者

(15)



面積計算書

工区

ブロック

34

計算者

精算者

備考

全体

陽印. I.

点	①	②	③	④	⑤	⑥	③ × ⑤		② × ⑥	
	X	X-(定数)	X _{n-1} -X _{n+1}	Y	Y-(定数)	Y _{n-1} -Y _{n+1}	+	-	+	-
I	-148. 555.719	-148.510.0 5.719	+46.725	-39. 808.844	-39.800.0 8.844	-98.247			413.335800	561.874593
II	605.624	55.624	+53.156	805.871	5.871	+93.818			312.078876	5218.532432
III	608.875	58.875	-46.725	802.662	102.662	+98.247	4286.881950			5784.392125
IV	558.899	8.899	-53.156	804.118	104.118	-93.818	5534.496408			834.886382
							10331.378358	725.314776	1376.760975	11002.824557
							9606.063582			9606.063582
										1/2 = 4803.031791
		全体	10.01							
				I II III IV						
				4803.03 - (4.50 + 4.41 + 4.60 + 4.50)						= 4785.02
I	-148. 555.719	-148.510.0 5.719	+2.895	-39. 808.844	-39.800.0 8.844	-3.176			25.603380	18.163544
1	558.714	8.714	+0.100	808.666	8.666	+2.998			0.866600	26.124572
9	555.819	5.819	-2.995	811.842	11.842	+0.178	35.466790			1.035782
							35.466790	26.469980	18.163544	27.160354
							8.996810			8.996810
										1/2 = 4.498405
										= 4.50

面積計算書

工
区

ブ
ロ
ック

34

計
算
者



精
算
者



備
考

陽 切 II. III. IV

点	①	②	③	④	⑤	⑥	③ × ⑤		② × ⑥	
	X	X-(定数)	X _{n-1} -X _{n+1}	Y	Y-(定数)	Y _{n-1} -Y _{n+1}	+	-	+	-
4	-148. 602.629	-148.600 2.629	-0.099	-39. 806.049	-39.800 6.049	-2.938	0.598851		7.724002	
II	605.624	5.624	+3.094	805.871	5.871	+2.760		18.164874		15.522240
5	605.723	5.723	-2.995	808.809	8.809	+0.178	26.382955			1.018694
							26.981806	18.164874	7.724002	16.540934
							8.816932			8.816932
							$\times \frac{1}{2} = 4.408466 = 4.41$			
10	-148. 608.774	-148.600 8.774	+3.049	-39. 899.645	-39.870 9.645	-0.089		29.407605	0.780886	
III	608.875	8.875	-2.948	902.662	12.662	+3.106	37.327576			27.565750
11	605.826	5.826	-0.101	902.751	12.751	-3.017	1.287851		17.577042	
							28.615427	29.407605	18.357928	27.565750
							9.207822			9.207822
							$\times \frac{1}{2} = 4.603911 = 4.60$			
13	-148. 561.898	-148.550 11.898	+0.100	-39. 904.031	-39.900 4.031	+2.998		0.403100		35.670204
IV	558.899	8.899	-3.099	904.118	4.118	-2.911	12.761682		25.904989	
14	558.799	8.799	+2.999	901.120	1.120	-0.087		3.358880	0.765513	
							12.761682	3.761980	26.670502	35.670204
							8.999702			8.999702

地 計 算

画地略図

工区

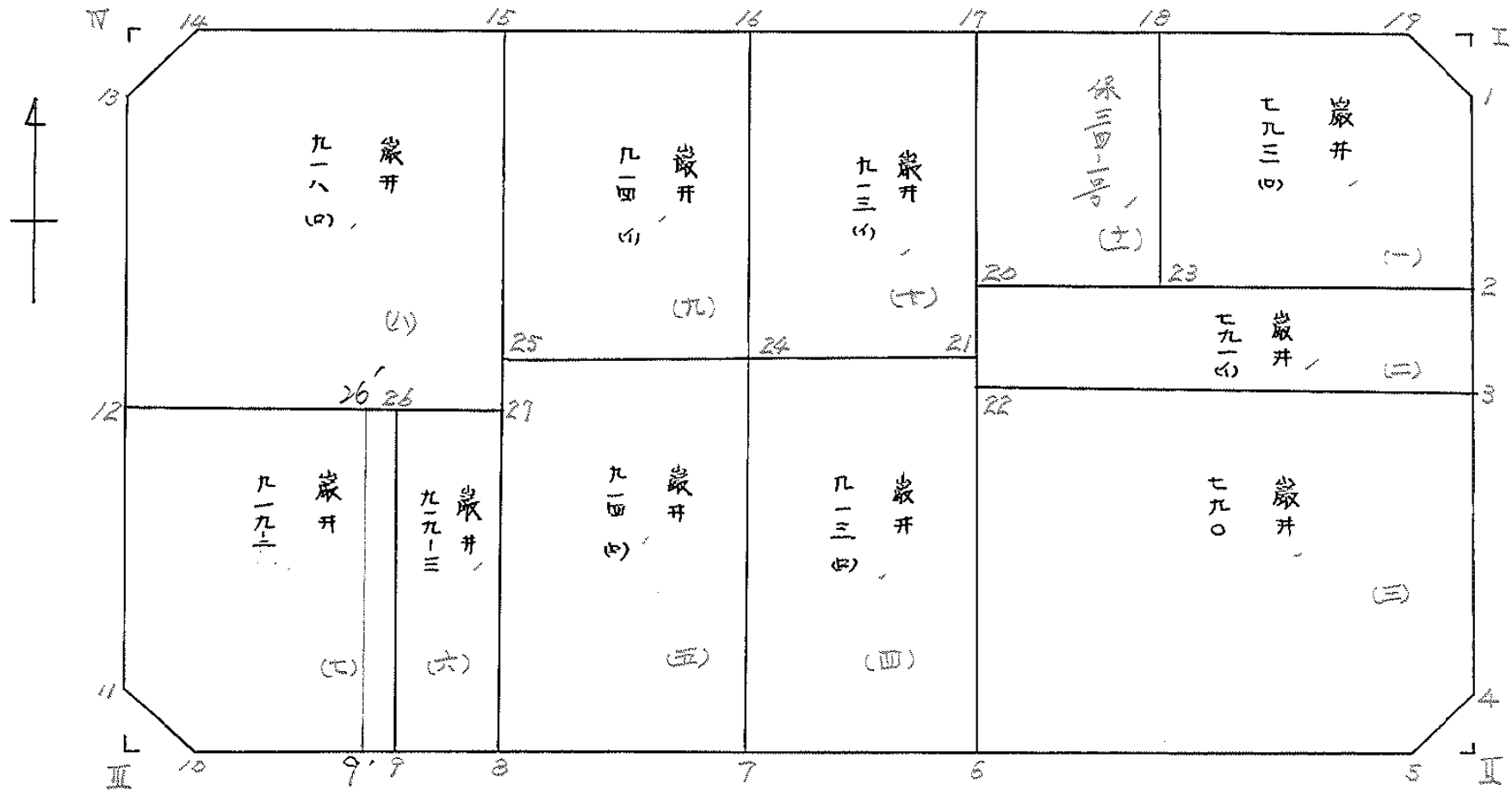
ブロック

34

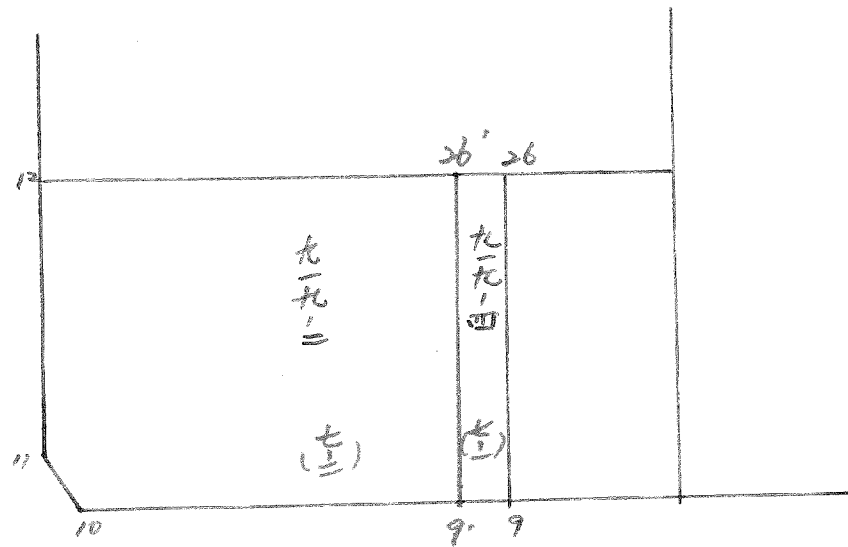
記入者



点検者



BNo. 24 分割計算



面積計算書

工
区

ブ
ロ
ック

34

計
算
者



精
算
者



備
考

歳并 793 (四) (一)
保 34 一号 (二)

点	①	②	③	④	⑤	⑥	③	×	⑤	②	×	⑥		
	X	X-(定数)	X _{n-1} -X _{n+1}	Y	Y-(定数)	Y _{n-1} -Y _{n+1}	+		-	+		-		
	-148.	-148.550		-39.	-39.800									
1	558.714	8.714	+ 19.934	808.666	8.666	- 4.192			172.480440			36.529088		
2	575.753	25.753	+ 17.726	807.650	7.650	+ 19.509			135.603900			502.415277		
23	576.440	26.440	- 19.367	828.175	28.175	+ 21.191	545.665225					560.290040		
18	556.386	6.386	- 20.621	828.841	28.841	- 16.333	594.730261					104.302538		
19	555.819	5.819	+ 2.328	811.842	11.842	- 20.175			27.568176			117.398325		
									1140.395486			335.920120	258.229951	1062.705317
									804.475366					804.475366
									$\times \frac{1}{2} = 402.237683$					
18	556.386	6.386	+ 19.660	828.841	8.841	- 12.467			173.814060			79.614262		
23	576.440	26.440	+ 20.449	828.175	8.175	+ 11.132			167.170575			294.330080		
20	576.835	26.835	- 19.660	839.973	19.973	+ 12.467	392.669180					334.551945		
17	556.780	6.780	- 20.449	840.642	20.642	- 11.132	422.108258					75.474960		
									814.777438			340.984635	155.089222	628.882025
									473.792803					473.792803
									$\times \frac{1}{2} = 236.8964015$					

面積計算書

工区

ブロック

34

計算者

計算者

備考

炭井 791 (A) (≡)
炭井 790 (E)

点	①	②	③	④	⑤	⑥	③ × ⑤		② × ⑥	
	X	X-(定数)	X _{n-1} -X _{n+1}	Y	Y-(定数)	Y _{n-1} -Y _{n+1}	+	-	+	-
2	⁻¹⁴⁸ 575.753	^{-148.570} 5.753	+ 4.505	^{-39.} 807.650	^{-39.800} 7.650	- 32.655		34.463 250	187.864 215	
3	581.340	11.340	+ 6.675	807.318	7.318	+ 32.136		48.847 650		364.422 240
22	582.428	12.428	- 4.505	839.786	39.786	+ 32.655	179.235 930			405.836 340
20	576.835	6.835	- 6.675	839.973	39.973	- 32.136	266.819 775		219.649 580	
							446.055 705	83.310 900	407.513 775	770.258 580
							362.744 805			362.744 805
							× 1/2 = 181.372 4025			
3	^{-148.} 581.340	^{-148.580} 1.340	+ 20.201	^{-39.} 807.318	^{-39.800} 7.318	- 33.737		147.830 918	45.207 580	
4	602.629	22.629	+ 24.383	806.049	6.049	+ 1.491		147.492 767		33.739 839
5	605.723	25.723	+ 4.107	808.809	8.809	+ 32.926		36.178 563		846.955 498
6	606.736	26.736	- 23.295	838.975	38.975	+ 30.977	907.922 625			828.201 072
22	582.428	2.428	- 25.396	839.786	39.786	- 21.657	1010.405 256		76.863 196	
							1918.327 881	331.502 248	122.070 776	1708.896 409
							1586.825 633			1586.825 633
							× 1/2 = 793.412 8165			

面積計算書

工
区

フ
ロ
ック

34

計算者



精算者



備考

炭井 914 (4) (A)
炭井 914 (4) (B)

点	①	②	③	④	⑤	⑥	③ × ⑤		② × ⑥	
	X	X-(定数)	X _{n-1} -X _{n+1}	Y	Y-(定数)	Y _{n-1} -Y _{n+1}	+	-	+	-
16	-148 557.225	-148.550 7.225	+24.548	-39 853.963	-39.850 3.963	-13.733		97.283724	99.220925	
24	582.204	32.204	+25.411	853.131	3.131	+12.071		79.561841		388.734484
25	582.636	32.636	-24.548	866.034	16.034	+13.733	393.602632			448.190188
15	557.656	7.656	-25.411	866.864	16.864	-12.071	428.531104		92.415576	
							822.133736	176.845565	191.636501	836.924672
							645.288171			645.288171
							$\times \frac{1}{2} = 322.6440855$			
24	-148 582.204	-148.580 2.204	+24.547	-39 853.131	-39.850 3.131	-13.735		76.856657	30.271940	
7	607.183	27.183	+25.413	852.299	2.299	+12.072		58.424487		328.153176
8	607.617	27.617	-24.547	865.203	15.203	+13.735	373.188041			379.319495
25	582.636	2.636	-25.413	866.034	16.034	-12.072	407.472042		31.821792	
							780.660083	135.281144	62.093732	707.472671
							645.378939			645.378939
							$\times \frac{1}{2} = 322.6894695$			

面積計算書

工区

ブロック

34

計算者



精算者



備考

巖井 919-2 (七)
919-3 (六)

点	①	②	③	④	⑤	⑥	③ × ⑤		② × ⑥	
	X	X-(定数)	X _{n-1} -X _{n+1}	Y	Y-(定数)	Y _{n-1} -Y _{n+1}	+	-	+	-
26	-148 585.336	-148.580 5.336	+ 21.715	-39 876.188	-39.870 6.188	- 27.883			134.372420	148.783688
9	607.961	27.961	+ 23.438	875.438	5.438	+ 23.457			127.455844	655.881177
10	608.774	28.774	- 2.135	899.645	29.645	+ 27.313	63.292075			785.904262
11	605.826	25.826	- 22.528	902.751	32.751	+ 3.676	737.814528			94.936376
12	586.246	6.246	- 20.490	903.321	33.321	- 26.563	682.747296			165.912498
							1483.853815	761.828264	314.696186	1,536.721815
							1,222.025629			1,222.025629
							$X\bar{2} = 611.0128145$			
27	-148 584.993	-148.580 4.993	+ 22.281	-39 865.955	-39.860 5.955	- 10.985			132.683355	54.848105
8	607.617	27.617	+ 22.968	865.203	5.203	+ 9.483			119.502504	261.892011
9	607.961	27.961	- 22.281	875.438	15.438	+ 10.985	343.974078			307.151585
26	585.336	5.336	- 22.968	876.188	16.188	- 9.483	371.805984			50.601288
							715.780062	252.185859	105.449393	569.043596
							463.594203			463.594203
							$X\bar{2} = 231.7971015$			

面積計算書							工 区	ブ ロ ック	34	計 算 者	精 算 者	備 考	(7-1) 919-4
点	①	②	③	④	⑤	⑥	⑧ × ⑤		② × ⑥				
	X	X-(定数)	X _{n-1} -X _{n+1}	Y	Y-(定数)	Y _{n-1} -Y _{n+1}	+	-	+	-			
>6	^{-148.} 575.336	^{-148,580.} 5.336	+ 22.558	^{-37.} 876.188	^{-37,870.} 6.188	- 2.749			139,588,904	14,668,664			
9	607.961	27.961	+ 22.692	875.638	5.638	+ 1.249			123,399,096	34,923,289			
9'	608.028	28.028	- 22.558	877.437	7.437	+ 2.749	167,763,846			77,048,972			
26'	575.403	5.403	- 22.692	878.187	8.187	- 1.249	185,779,404			6,748,347			
							353,543,250	262,988,000	21,417,011	111,972,261			
			611.01	<u>-565.73 = 45.28 .. 919-4</u>			90,555,250			90,555,250			
									$\frac{1}{2} = 45,277,625$				
26'	^{-148.} 575.403	^{-148,580.} 5.403	+ 21.782	^{-37.} 878.187	^{-37,870.} 8.187	- 25.984			178,329,234	139,851,252			
9'	608.028	28.028	+ 23.371	877.637	7.637	+ 21.458			173,810,127	601,424,824			
10	608.774	28.774	- 2.202	899.665	29.665	+ 25.314	65,278,290			728,385,036			
11	605.826	25.826	- 22.528	902.751	32.751	+ 3.676	737,814,528			94,936,376			
12	586.246	6.246	- 20.423	903.321	33.321	- 24.564	680,514,783			153,426,744			
							1483,607,601	352,139,361	293,277,996	1424,746,236			
							1131,468,240			1131,468,240			
									$\frac{1}{2} = 565,734,120$				

面積計算書

工区

ブロック

34

計算者

(Seal)

精算者

(Seal)

備考

歳

913 (イ) (+)
913 (ロ) (四)

点	①	②	③	④	⑤	⑥	③ × ⑤		② × ⑥	
	X	X-(定数)	X _{n-1} -X _{n+1}	Y	Y-(定数)	Y _{n-1} -Y _{n+1}	+	-	+	-
17	-148. 556.780	-148.550 6.780	+ 24.533	-39 840.642	-39.830 10.642	- 14.154		261.080186		95.964120
21	581.758	31.758	+ 25.424	839.809	9.809	+ 12.489		249.384016		396.625662
24	582.204	32.204	- 24.533	853.131	23.131	+ 14.154	567.472823			455.815416
16	557.225	7.225	- 25.424	853.963	23.963	- 12.489	609.235312			90.233025
							1176.708135	510.464202	186.197145	852.441078
							666.243933			666.243933
							$\times \frac{1}{2} = 333.1219665$			
21	-148. 581.758	-148.580 1.758	+ 24.532	-39 839.809	-39.830 9.809	- 14.156		240.634388		24.886248
6	606.736	26.736	+ 25.425	838.975	8.975	+ 12.490		228.189375		333.932640
7	607.183	27.183	- 24.532	852.299	22.299	+ 14.156	547.039068			384.802548
24	582.204	2.204	- 25.425	853.131	23.131	- 12.490	588.105675			27.527960
							1135.144743	468.823763	52.414208	718.735188
							666.320980			666.320980
							$\times \frac{1}{2} = 333.160490$			

面積計算書

工
区

フ
ロ
ック

34

計
算
者



精
算
者



備
考

巖井 918 (四) (一)

点	①	②	③	④	⑤	⑥	③ × ⑤		② × ⑥	
	X	X-(定数)	X _{n-1} -X _{n+1}	Y	Y-(定数)	Y _{n-1} -Y _{n+1}	+	-	+	-
15	^{-148,} 557.656	^{-148,550} 7.656	+ 26.194	^{-39,} 866.864	^{-39,860} 5.864	- 35.165		179.795 616	269.223 240	
27	584.993	34.993	+ 28.590	865.955	5.955	+ 36.457		170.253 450		1275.739 801
12	586.246	36.246	- 23.095	903.321	43.321	+ 38.076	2000.498 495			1380.102 696
13	561.898	11.898	- 27.447	904.031	44.031	- 2.201	1208.518 857		26.187 498	
14	558.799	8.799	- 4.242	901.120	41.120	- 37.167	174.431 040		327.032 433	
							2383.448 392	350.049 066	622.443 171	2655.802 497
							2033.399 326			2033.399 326
							$\times 1/2 = 1016.699663$			

計年月 算日	計算者	検査者
-----------	-----	-----

B. NO. 34

各筆面積計算書

地番	算式	隅切	地積	摘要
1	巖井 793 (口)		402 23	
2	" 791 (口)		181 37	
3	" 790		793 41	
4	" 913 (口)		333 16	
5	" 914 (口)		322 68	
6	" 919-3		231 79	
7	" 919-2		611 01	919-4 05.28 919-2 565.13
8	" 918 (口)		1,016 69	
9	" 914 (口)		322 64	
10	" 913 (口)		333 12	
11	保 34-1号		236 89	
	計		4,784 99	
	全		4,785 02	
	差		- 0 03	
	宅地面積		4,548 10	10筆
	保留地		236 89	1筆