

街区略図

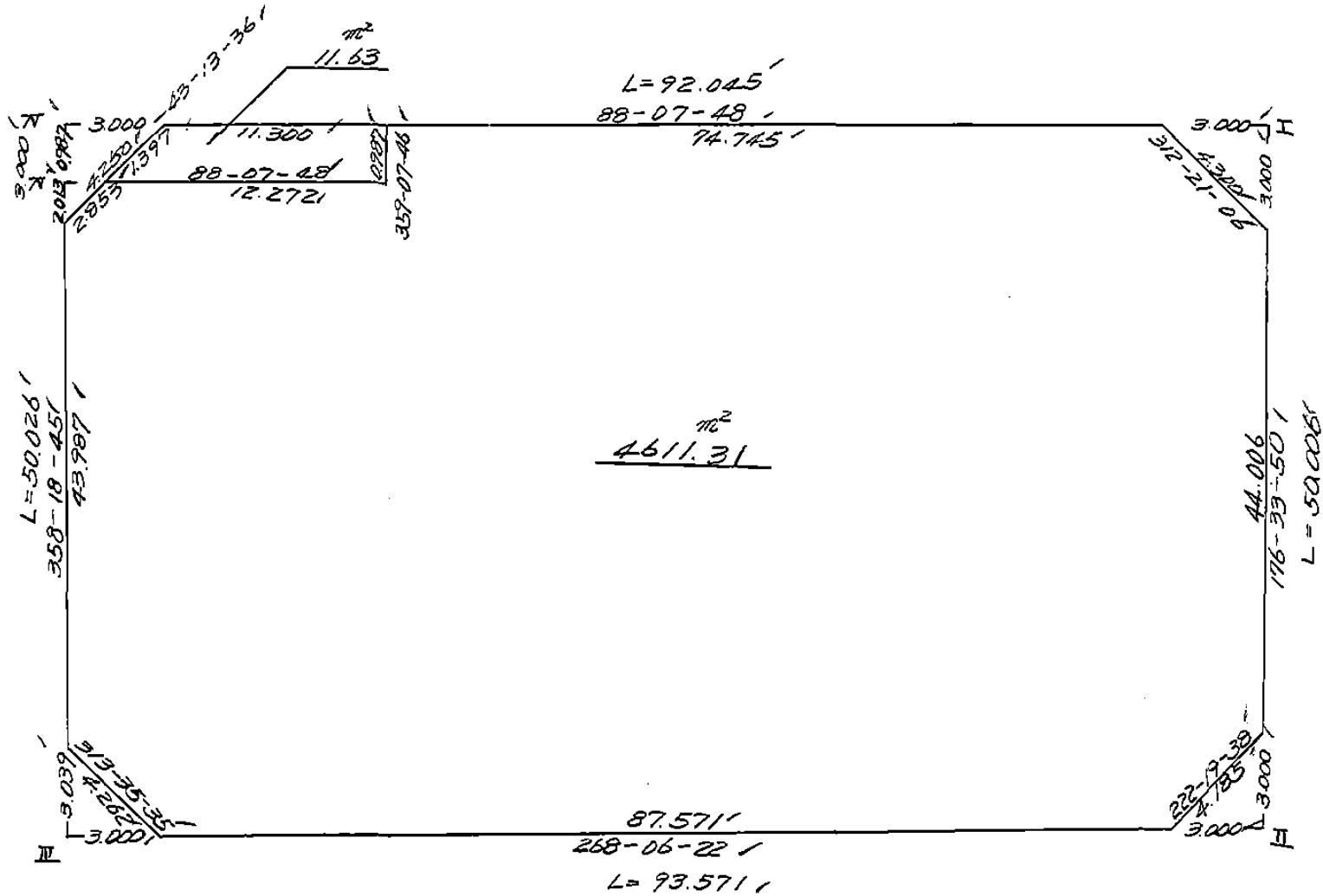
工区

ブロック

6

記入者

点検者



面積計算書

工
区

フ
ロ
ック

6

計
算
者



精
算
者



備
考

全体

点	①	②	③	④	⑤	⑥	③ × ⑤		② × ⑥	
	X	X - (定数)	X _{n-1} - X _{n+1}	Y	Y - (定数)	Y _{n-1} - Y _{n+1}	+	-	+	-
I	-128 445.899	-148.440 5.899	+46.912	-39 815.327	-39.800 15.327	-94.993			719.020224	560.363707
II	495.815	55.815	+53.008	812.330	12.330	+90.523			653.588640	5052.541245
III	498.907	58.907	-46.912	905.850	105.850	+94.993	4965.635200			5595.752651
IV	448.903	8.903	-53.008	907.323	107.323	-90.523	5688.977584			805.926269
							10654.612784	1372.608864	1366.289776	10648.293896
							9282.003920			7282.003920
							$\frac{1}{2} = 4641.001960$			
							$\div 10 = 464.100196$			

$$464.100' - (4.50' + 4.50' + 4.56' + 4.50') - 11.63 = 461.31$$

10.06

画地計算

画地略図

工区

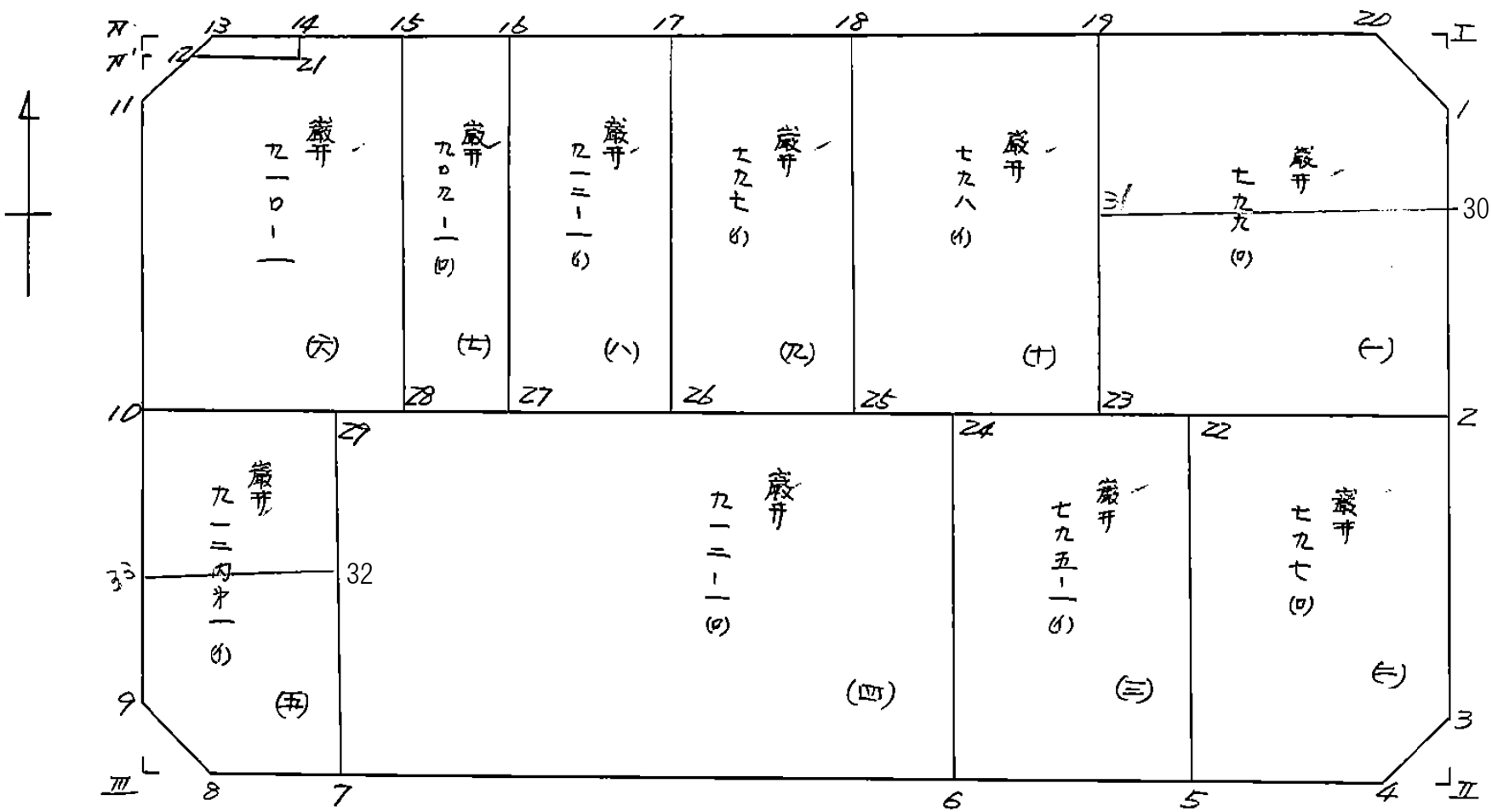
ブロック

6

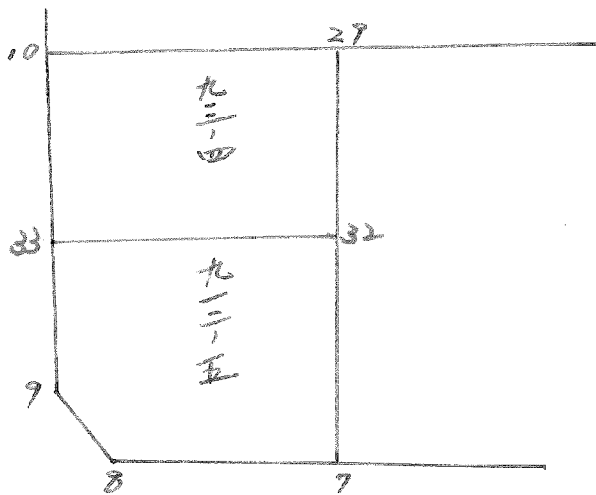
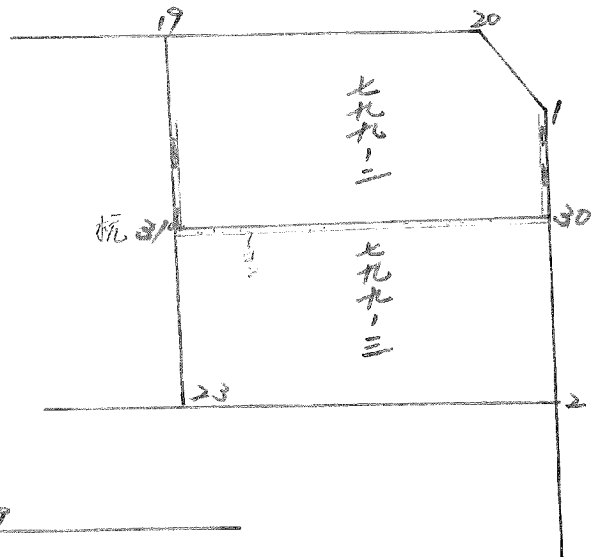
記入者



点検者



BNo.6 分割計算



面積計算書

工
区

ブ
ロ
ック

6

計
算
者

精
算
者



備
考

1. 案# 799 (A)
2. 案# 797 (B)

点	①	②	③	④	⑤	⑥	③ × ⑤		② × ⑥	
	X	X - (定数)	X _{n-1} - X _{n+1}	Y	Y - (定数)	Y _{n-1} - Y _{n+1}	+	-	+	-
1	400.844	-8.894	+24.857	815.147	-5.147	-4.496			127.938979	39.987424
2	470.854	-30.854	+22.554	813.829	-3.829	+16.761			86.359266	517.143894
23	471.448	-31.448	-24.386	821.408	-21.908	+18.910	534.248488			594.681680
19	446.468	+6.468	-25.451	832.739	22.739	-13.583	578.730289			87.854844
20	445.997	+5.997	+2.426	818.325	-8.325	-17.578			20.196450	105.499224
							1112.978711	124.494695	233.341492	111.825574
							878.484082			878.484082
									1/2 = 439.242041	
2	470.854	-0.854	+21.502	813.829	-3.829	-15.450			82.331158	13.194300
3	472.820	+22.820	+25.060	812.510	+2.510	+1.499			12.900600	34.207180
4	475.914	+25.914	+3.484	815.328	-5.328	+14.621			18.562752	378.888594
5	476.304	+26.304	-24.596	827.131	+17.131	+12.632	421.354076			332.272128
22	471.318	-1.318	-25.450	827.460	+17.960	-13.302	457.082000			17.532036
							878.436076	163.794510	30.726336	745.367902
							714.641566			714.641566
									1/2 = 357.320783	

面積計算書							工区	ブロック	6	計算者	精算者	備考	799-2	799-3
点	①	②	③	④	⑤	⑥	② × ⑤		② × ⑥					
	X	X-(定数)	X _{n-1} -X _{n+1}	Y	Y-(定数)	Y _{n-1} -Y _{n+1}	+	-	+	-				
20	⁻¹⁴⁸ 445.997	^{-148.440} 5.997	+ 2.426	⁻³⁹ 818.325	^{-39.800} 18.925	- 17.592		44.456450		105.499224				
1	448.894	8.894	+ 11.482	815.147	15.147	- 3.693		173.917854		32.845542				
30	457.479	17.479	+ 9.166	814.632	14.632	+ 17.206		134.116912		300.743674				
31	458.060	18.060	- 11.011	832.353	32.353	+ 18.107	356.238883			327.012420				
19	446.468	6.468	- 12.063	832.739	32.739	- 14.028	394.930557		90.733104					
							751.169440	352.491216	229.077870	627.756094				
							398.678224			398.678224				
								x 1/2 = 199.339112						
30	⁻¹⁴⁸ 457.479	^{-148.450} 7.479	+ 12.794	⁻³⁹ 814.632	^{-39.800} 14.632	- 18.524		187.201808		138.540996				
2	470.854	20.854	+ 13.969	813.829	13.829	+ 17.276		193.177301		360.273704				
23	471.448	21.448	- 12.794	831.908	31.908	+ 18.524	408.230952			397.302752				
31	458.060	8.060	- 13.969	832.353	32.353	- 17.276	451.939057		139.244560					
							860.170009	380.379109	277.785556	757.576456				
							479.790900			479.790900				
								x 1/2 = 239.895450						
								639.24 - 199.33 = 239.91... 799-3						

面積計算書

工区: _____ ブロック: 6 計算者: _____ 精算者: _____ 備考: 丁. 座# 795-1(1)
 乙. 座# 912-1(1)

点	①	②	③	④	⑤	⑥	③ × ⑤	② × ⑥
	X	X - (定数)	X _{n-1} - X _{n+1}	Y	Y - (定数)	Y _{n-1} - Y _{n+1}	+	-
22	-148 471.318	-148.470 1.318	+24.540	-3P 827.460	-3P.820 7.460	-14.317	195.338400	18.975246
5	446.304	26.304	+25.425	827.131	7.131	+12.738	181.376985	335.060352
6	446.753	26.753	-24.540	840.648	20.648	+14.317	507.928920	385.162941
24	471.764	1.764	-25.425	841.528	21.528	-12.738	547.564680	22.469832
							1055.493600	376.715385
							41.445078	720.223293
							678.778215	678.778215
							1/2 = 339.3891075 /	
24	-148 471.764	-148.470 1.764	+23.311	-3P 841.528	-3P.840 1.528	-44.419	35.741448	87.175116
6	446.753	26.753	+26.545	840.648	0.648	+47.758	18.563310	1277.669774
7	448.354	28.354	-23.311	884.286	44.286	+44.419	1152.848826	1401.473421
2P	473.362	2.362	-26.545	840.117	50.117	-47.758	1332.861615	160.562396
							2485.710441	54.304758
							247.737512	2679.143195
							2431.405683	2431.405683
							1/2 = 1215.7028415 /	

面積計算書

工区

ブロック

6

計算者

精算者



備考

5 廊井 912 内計18)
6 廊井 910-1

点	①	②	③	④	⑤	⑥	③ × ⑤		② × ⑥	
	X	X-(定数)	X _{n-1} -X _{n+1}	Y	Y-(定数)	Y _{n-1} -Y _{n+1}	+	-	+	-
	-148	148.170		-3P	39880					
2P	473.262	-3.362	+24.456	8P0.117	-10.117	-17.300		247.421352	58.162600	
7	4P8.35P	-28.359	+25.446	8P2.286	-9.286	+12.735		236.291556		361.151865
8	4P8.808	-28.808	-2.490	8P2.852	-22.852	+16.653	56.901480			479.739624
9	4P5.26P	-25.869	-24.905	8P5.23P	-25.239	+3.734	646.010795			96.594846
10	473.P03	-3.903	-22.507	8P6.586	-26.586	-15.822	598.371102		61.753266	
								1301.283371	883.712908	119.915866
								817.570469		817.570469
								1/2 = 408.7852345		
	-148	148.440		-3P	39880					
15	448.037	-8.037	+24.593	8P0.7P8	-0.798	-13.029		19.625214	104.714073	
28	473.02P	-33.029	+25.866	8P0.002	-0.002	+25.788		0.051732		851.751852
10	473.P03	-33.903	-21.127	8P6.526	-26.586	+27.233	561.682422			923.280399
11	451.P02	-11.902	-24.080	9P7.225	-27.235	-1.305	655.818800		15.532110	
12	44P.823	-9.823	-2.479	8P5.281	-25.281	-14.219	62.671599		139.673237	
21	449.423	-9.423	-1.387	8P3.016	-13.016	-12.250	18.053192		115.431750	
14	448.436	-8.436	-1.386	8P3.031	-13.031	-12.218	18.060966		103.071046	
								1316.286979	19.676946	478.422218
								1296.610033		1296.610033

面積計算書

工
区

ブ
ロ
ック

6

計
算
者

精
算
者

備
考

912-4
912-5

点	①	②	③	④	⑤	⑥	③ × ⑤		② × ⑥	
	X	X-(定数)	X _{n-1} -X _{n+1}	Y	Y-(定数)	Y _{n-1} -Y _{n+1}	+	-	+	-
29	-148 473.362	-148.470 3.362	+ 11.492	-39 890.117	-39.880 10.117	- 16.869			116.264564	56.713578
32	485.395	15.395	+ 12.575	889.717	9.717	+ 16.115			122.191275	248.090425
33	485.937	15.937	- 11.492	906.232	26.232	+ 16.869	301.458144			268.841253
10	473.903	3.903	- 12.575	906.586	26.586	- 16.115	334.318950			62.896845
							635.777094	238.455839	119.610423	516.931678
							397.321255			397.321255
									$\times \frac{1}{2} = 198.660627$	
32	-148 485.395	-148.480 5.395	+ 12.422	-39 889.717	-39.880 9.717	- 16.946			120.704574	91.423670
7	498.359	18.359	+ 13.413	889.286	9.286	+ 13.135			124.553118	241.145465
8	498.808	18.808	- 2.490	902.852	22.852	+ 16.653	56.901480			313.209624
9	495.869	15.869	- 12.871	905.939	25.939	+ 3.380	333.860869			53.637220
33	485.937	5.937	- 10.474	906.232	26.232	- 16.222	274.753968			96.310014
							665.516317	245.257692	187.733684	607.992309
							420.258625			420.258625
									$\times \frac{1}{2} = 210.129312$	

面積計算書

工
区

ブ
ロ
ック

6

計
算
者

精
算
者



備
考

7 番井 909-1(0)
8 番井 912-1(0)

点	①	②	③	④	⑤	⑥	③ × ⑤		② × ⑥	
	X	X-(定数)	X _{n-1} -X _{n+1}	Y	Y-(定数)	Y _{n-1} -Y _{n+1}	+	-	+	-
		148 440			39870					
16	447.842	- 7.842	+24.797	874.844	- 4.844	- 6.745		120.116 668	52.894 290	
27	472.834	- 32.834	+25.187	874.053	- 4.053	+ 5.158		102.082 911	169.357 772	
28	473.029	- 33.029	+24.797	880.002	- 10.002	+ 6.745	248.019 594			222.780 605
15	448.037	- 8.037	+25.187	880.798	- 10.798	- 5.158	271.969 226		41.454 846	
							519.988 820	222.199 579	94.349 136	392.138 377
							297.789 241			297.789 241
							1/2 = 148.894 620 51			
		148 440			39850					
17	447.359	- 7.359	+24.504	860.023	- 10.023	+ 15.627		245.603 592	114.999 093	
26	472.346	- 32.346	+25.475	859.217	- 9.217	+ 14.030		234.803 075		453 814 380
27	472.834	- 32.834	+ 24.504	874.053	- 24.053	+ 15.627	589 394 712			513.096 918
16	447.842	- 7.842	+ 25.475	874.844	- 24.844	+ 14.030	632.900 900		110.023 260	
							1222.295 612	480.406 667	225.022 353	966.911 298
							714.888 925			714.888 925
							1/2 = 370.944 472 51			

面積計算書

工
区

ブ
ロ
ック

6

計
算
者



精
算
者



備
考

戸 番 797 (1)
10 番 798 (1)

点	①	②	③	④	⑤	⑥	③ × ⑤		② × ⑥	
	X	X - (定数)	X _{n-1} - X _{n+1}	Y	Y - (定数)	Y _{n-1} - Y _{n+1}	+	-	+	-
18	446.957	6.957	+24.593	847.733	7.733	-13.110		190.100339		91.206270
25	471.942	31.942	+25.389	846.913	6.913	+11.484		175.514157		366.821928
26	472.346	22.346	-24.593	859.217	19.217	+13.110	472.411511			424.056060
17	447.359	7.359	-25.389	860.023	20.023	-11.484	509.363947			84.510756
								180.775458	365.614496	175.717026
								615.160962		615.160962
								x 1/2 = 307.580481		
19	446.468	6.468	+24.491	832.739	2.739	-15.825		67.080849		102.356100
23	471.448	31.448	+25.474	831.908	1.908	+14.174		48.604392		425.743952
25	471.942	31.942	-24.491	846.913	16.913	+15.825	414.216283			505.402150
18	446.957	6.957	-25.474	847.733	17.733	-14.174	451.730442			98.608518
								865.946725	115.685241	200.964618
								750.261484		750.261484
								x 1/2 = 375.130742		

面積計算書

工
区

ブ
ロ
ック

6

計
算
者

精
算
者

備
考

隅切 I, II

点	①	②	③	④	⑤	⑥	③ × ⑤		② × ⑥		
	X	X - (定数)	X _{n-1} - X _{n+1}	Y	Y - (定数)	Y _{n-1} - Y _{n+1}	+	-	+	-	
I	-148 445.899	-148.445 0.899	+2.897	-39 815.327	-39.815 0.327	-3.178			0.947319	2.857022	
1	448.894	3.894	+0.098	815.147	0.147	+2.998			0.014406		11.674212
2D	445.997	0.997	-2.995	818.325	3.325	+0.180	9.958375				0.179460
							9.958375	0.961725	2.857022		11.853672
							8.996650				8.996650
							× 1/2 = 4.498325' ≙ 4.50'				
3	-148 492.820	-148.490 2.820	-0.099	-39 812.510	-39.810 2.510	-2.998	0.248490			8.454360	
II	495.815	5.815	+3.094	812.330	2.330	+2.818			7.209020		16.386670
4	495.914	5.914	-2.995	815.328	5.328	+0.180	15.957360				1.064520
							16.205850	7.209020	8.454360		17.451190
							8.996830				8.996830
							× 1/2 = 4.498415' ≙ 4.50'				

面積計算書

工
区

フ
ロ
ック

6

計
算
者

精
算
者



備
考

隅切Ⅱ,Ⅳ

点	①	②	③	④	⑤	⑥	③ × ⑤		② × ⑥	
	X	X-(定数)	X _{n-1} -X _{n+1}	Y	Y-(定数)	Y _{n-1} -Y _{n+1}	+	-	+	-
8	-148 498.808	-148.495 3.808	+3.038	-39 902.852	-39.902 0.852	-0.089			2.588376	0.338912
Ⅲ	498.907	3.907	-2.939	905.850	3.850	+2.087	11.315150			12.060909
9	495.869	0.869	-0.099	905.929	3.939	-2.998	0.389961			2.605262
							11.705111	2.588376	2.944174	12.060909
							9.116735			9.116735
							$x \frac{1}{2} = 4.5583675 \div 4.56 \text{ m}^2$			
11	-148 441.902	-148.448 3.902	+0.098	-39 907.235	-39.904 3.235	+2.999			0.317030	11.702098
Ⅳ	448.903	0.903	-3.097	907.323	3.323	-2.911	10.291331			2.628633
13	448.805	0.805	+2.999	904.324	0.324	-0.088			0.971676	0.070840
							10.291331	1.288706	2.699473	11.702098
							9.002625			9.002625
							$x \frac{1}{2} = 4.5013125 \div 4.50 \text{ m}^2$			

面積計算書

工
区

ブ
ロ
ック

6

計
算
者



精
算
者



備
考

水路

点	①	②	③	④	⑤	⑥	③ × ⑤		② × ⑥	
	X	X - (定数)	X _{n-1} - X _{n+1}	Y	Y - (定数)	Y _{n-1} - Y _{n+1}	+	-	+	-
	-118	-118.110		-37	-39.890					
14	448.436	8.436	+0.618	893.031	3.031	-11.308		1.873158	95.394288	
21	449.423	9.423	+1.387	893.016	3.016	+12.250		4.183192		431750 115.542000
12	449.823	9.823	-0.618	905.281	15.281	+11.308	9.443658			111078685
13	448.805	8.805	-1.387	904.324	14.324	-12.250	19.867388		107.861250	
							29.311046	60.56350	203.255538	510234 226.620684
							23.254696			254696 23.264966
							$\times \frac{1}{2} = 11.627348 \div 11.63 \text{ m}^2$			

