

面積計算書

工区

ブロック

9

計算者



精算者

備考

全体

その1

点	①	②	③	④	⑤	⑥	③ × ⑤	② × ⑥
	X	X-(定数)	X _{n-1} -X _{n+1}	Y	Y-(定数)	Y _{n-1} -Y _{n+1}		
K96	⁻¹⁴⁸ 422.382	^{148.230} -172.382	+ 21.485	⁻³⁹ 945.502	³⁹⁹³⁰ -15.502	- 2.667	333.060470	513.082794
Ⅰ	442.173	- 212.173	+ 20.686	944.843	- 14.843	+ 26.463	307.042298	5614.734099
Ⅱ	443.068	- 213.068	- 177.369	971.965	- 41.965	+ 22.316	7443.290085	6885.505428
Ⅲ	264.804	- 24.804	- 196.458	977.159	- 47.159	+ 19.571	9264.762822	681.149084
Ⅳ	246.610	- 16.610	- 29.838	991.536	- 61.536	- 0.546	1836.111168	9.069060
Ⅴ	234.966	- 4.966	+ 40.661	976.613	- 46.613	- 44.608	1895.331193	221.523328
K86	287.271	- 57.271	+ 80.001	946.928	- 16.928	- 41.911	1254.256928	2400.284881
K87	214.967	- 84.967	+ 25.727	934.702	- 4.702	+ 11.086	167.988254	941.944162
K88	222.998	- 92.998	+ 16.949	958.014	- 28.014	+ 18.940	474.809286	1761.382120
K89	201.916	- 101.916	+ 16.888	953.642	- 23.642	- 9.018	398.083996	919.078488
K90	229.836	- 109.836	+ 20.506	948.996	- 18.996	- 12.857	329.531976	1412.161452
K91	252.422	- 122.422	+ 18.369	940.785	- 10.785	+ 5.802	198.109665	710.292444
K92	258.205	- 128.205	+ 7.345	954.798	- 24.798	+ 18.942	182.141310	2428.459110
K93	259.767	- 129.767	+ 61.913	959.727	- 29.727	+ 3.100	1840.487751	402.277700
K94	420.118	- 190.118	+ 60.921	957.898	- 27.898	- 12.217	1699.574058	2322.671606
K95	420.688	- 190.688	+ 22.64	947.510	- 17.510	- 12.396	39.642640	2363.768448

18.544.164075 9280.059925 10161.640057 19425.724267
9264.104150 三和測量建設株式会社 9264.104150

Σ = 4622.052075

面積計算書

工
区

フ
ロ
ック

9

計
算
者



精
算
者

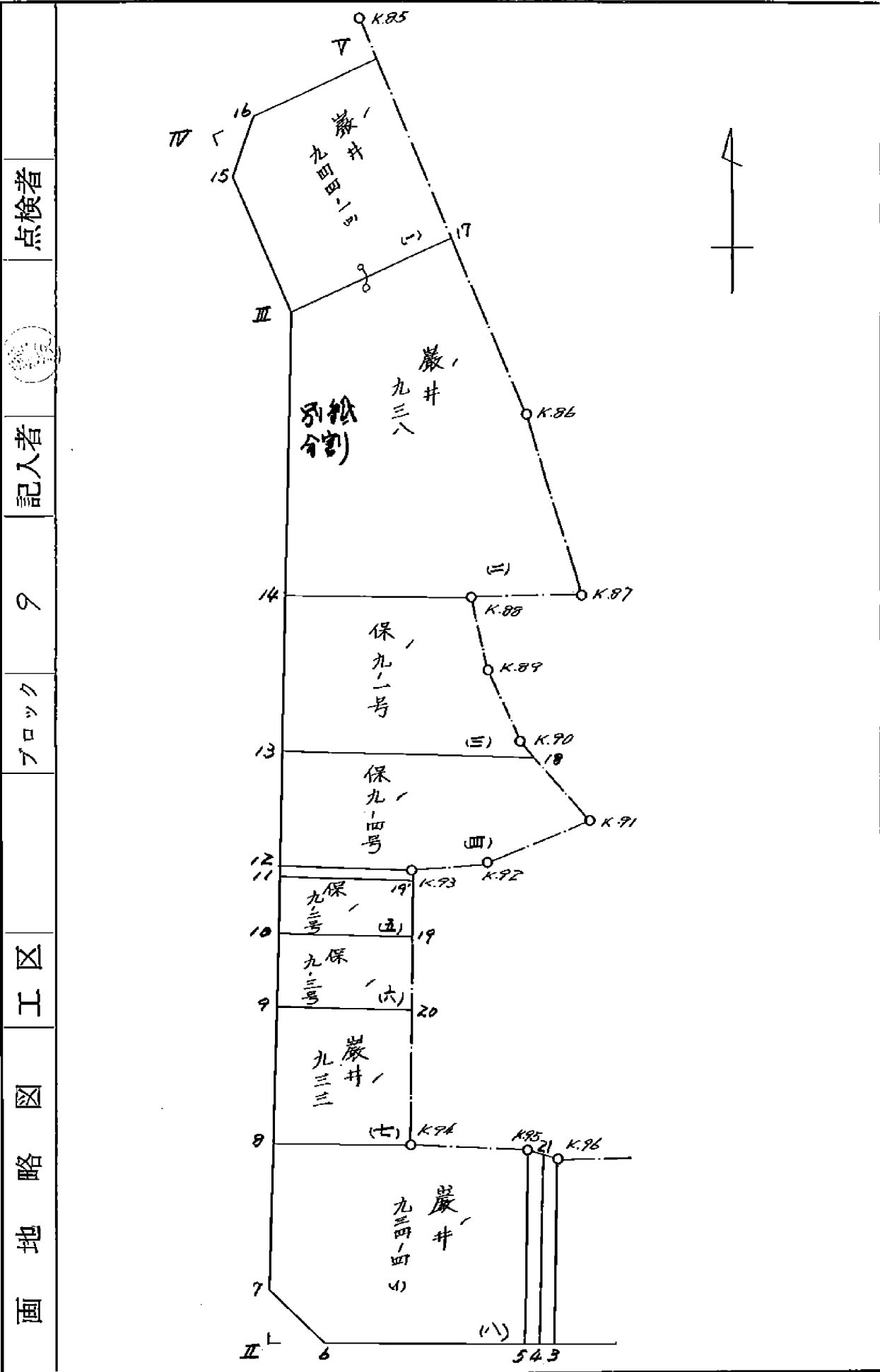
備
考

全体

402

点	①	②	③	④	⑤	⑥	③	×	⑤	②	×	⑥
	X	X - (定数)	X _{n-1} - X _{n+1}	Y	Y - (定数)	Y _{n-1} - Y _{n+1}	+		-	+		-
		水路	泥上	水路	隅切II	隅切IV						
		4632.05	- (20.25	+ 20.80	+ 14.65	+ 4.50	+ 4.54)	=	4567.31		
					64.74 ^{m²}							

画地計算



点検者

記入者

9

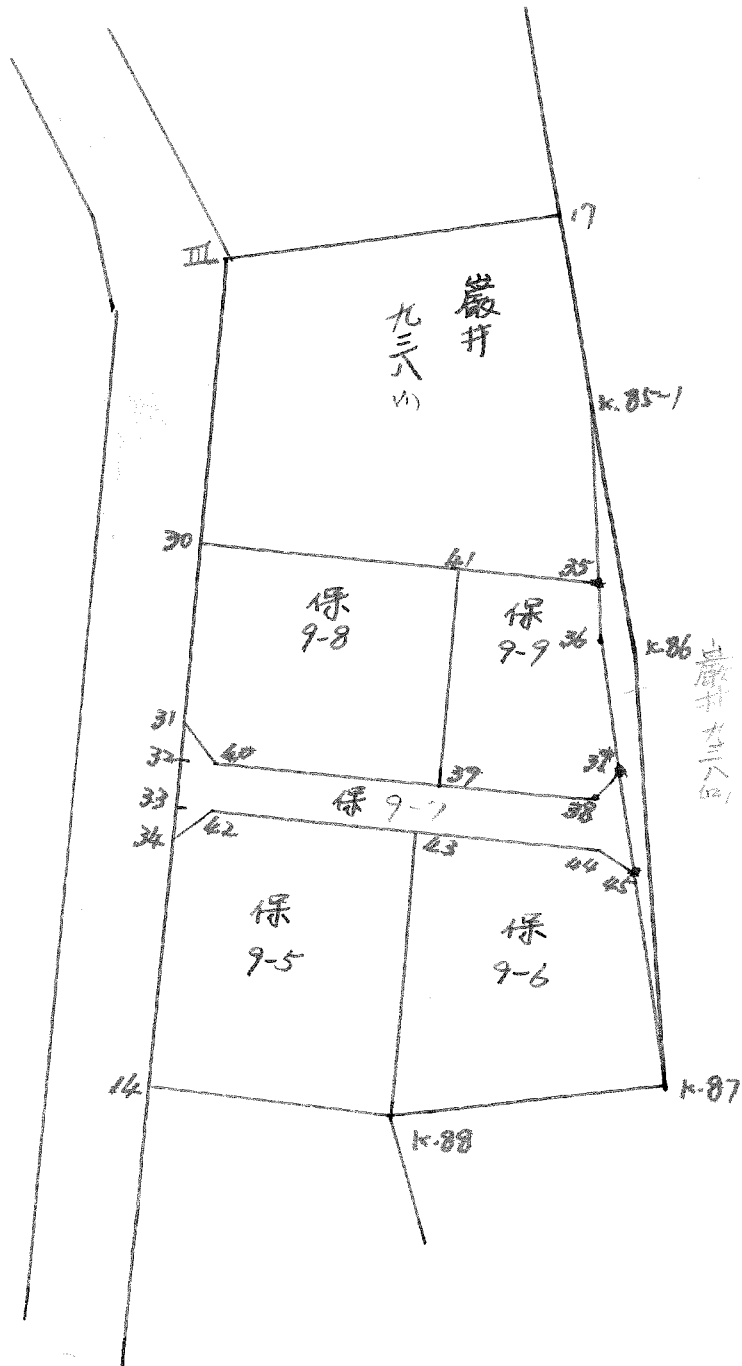
ブロック

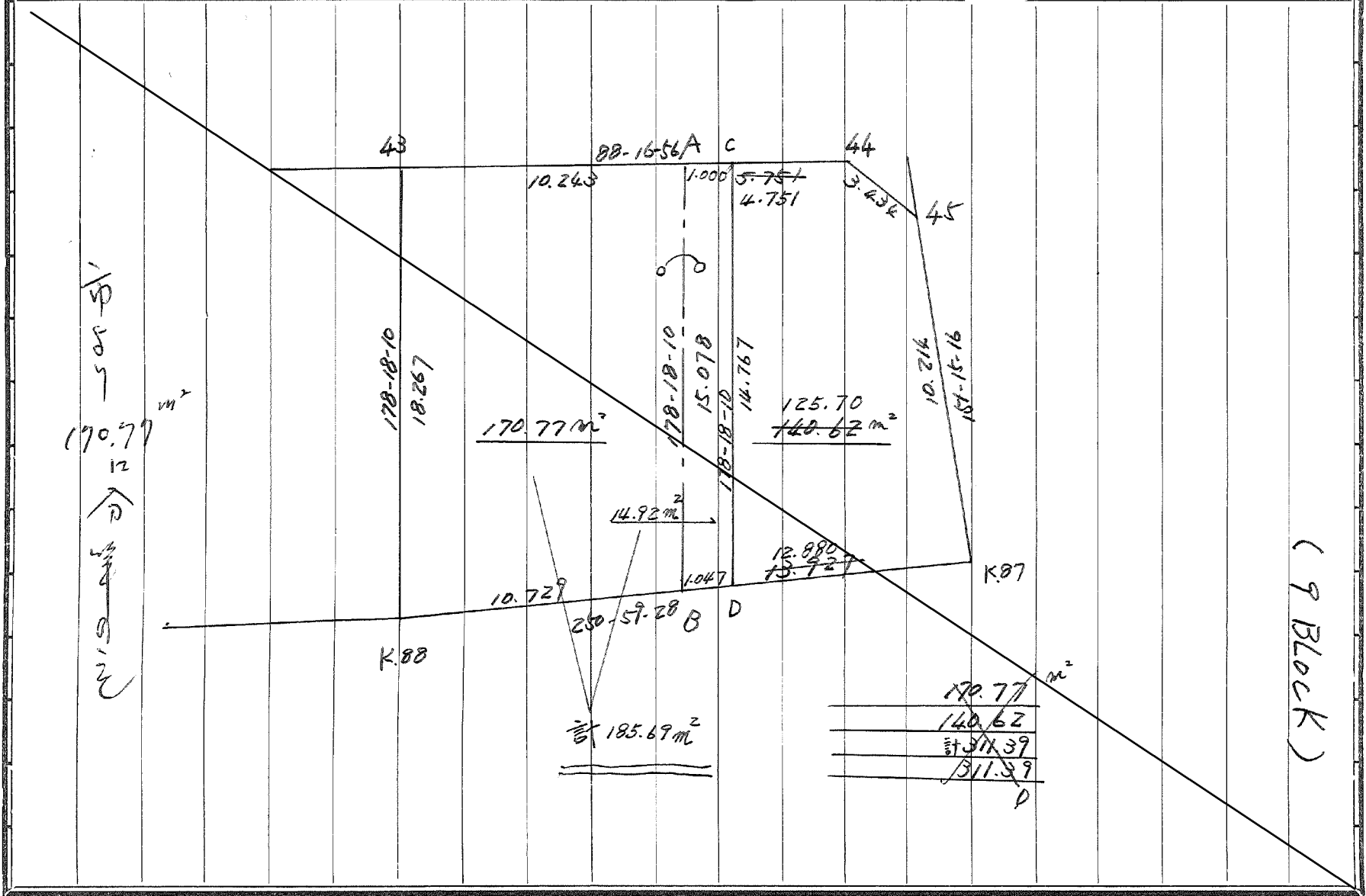
工区

略図

画面

BNo. 9 分割計算 52-8.30



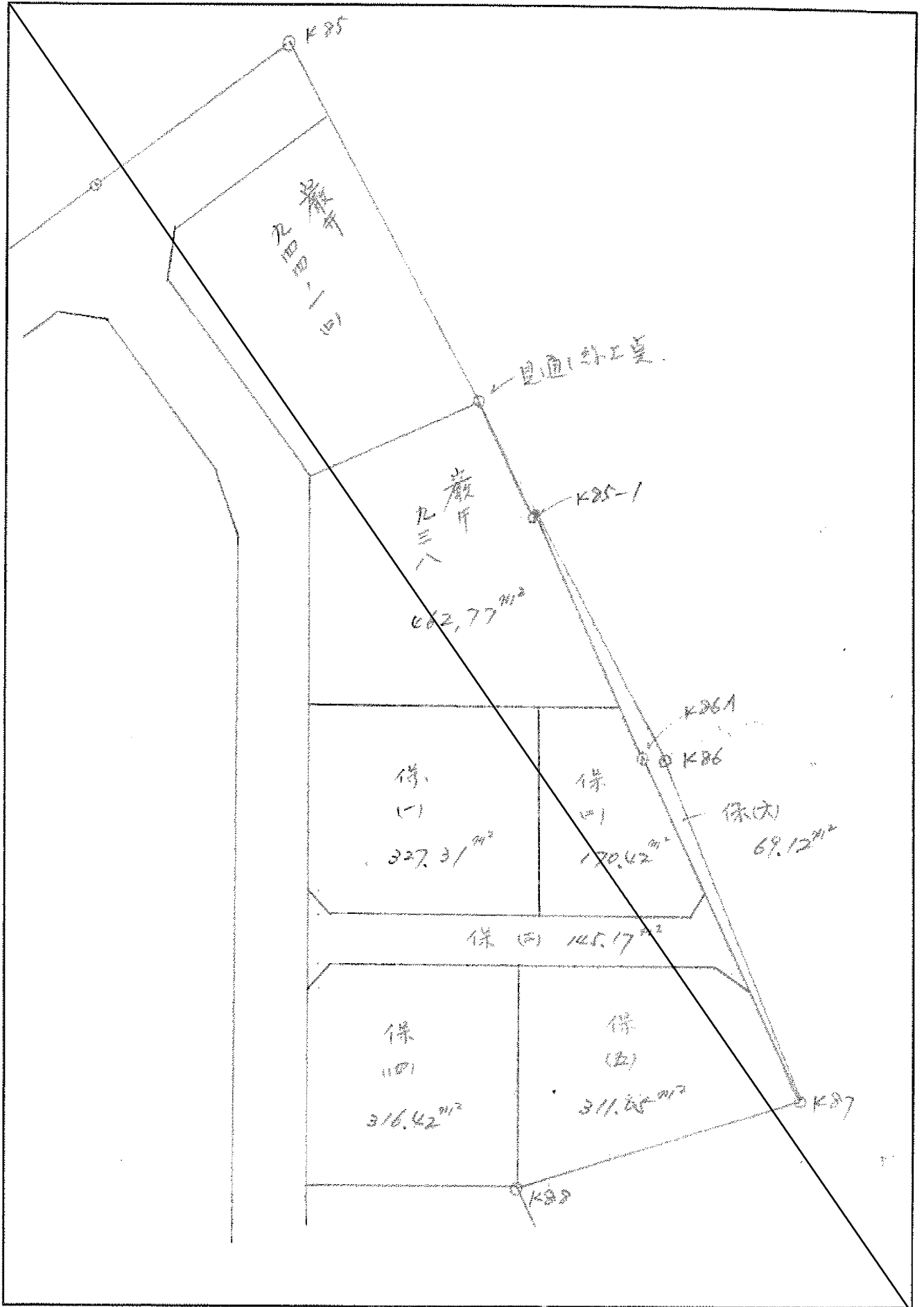


1/8-205
 170.77
 12
 ← 1/8-205 (S.M.)

170.77	m ²
140.62	
計 311.39	
<u>311.39</u>	

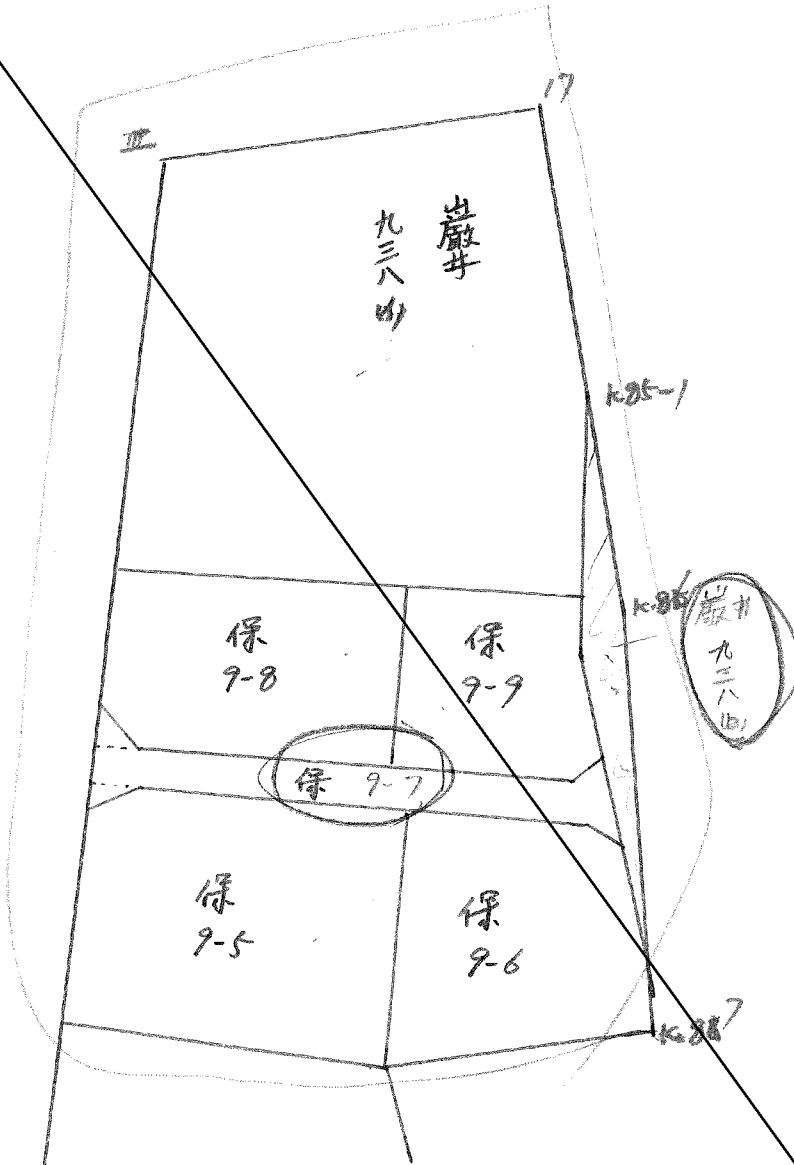
D

(9 Block)

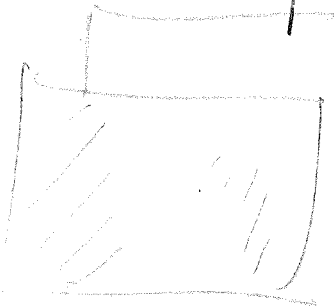


BND. 9 分割計算 小. 62. 831

九三ハ



65



面積計算書

工
区

ブ
ロ
ック

9

計
算
者



精
算
者

備
考

1 番 944-1 (H)
2 番 938

点	①	②	③	④	⑤	⑥	③	×	⑤	②	×	⑥
	X	X-(定数)	X _{n-1} -X _{n+1}	Y	Y-(定数)	Y _{n-1} -Y _{n+1}	+	-	+	-		
	-148	148.230		-3P	39.960							
V	234.766'	-4.766'	+13.515'	P76.613'	-16.613'	-25.1754			224.524695	127.894364		
17	258.260'	-28.260'	+29.838'	P63.3P2'	-3.392'	+0.546			101.210496			15.429960
III	264.804'	-34.804'	-9.296'	P77.15P'	-17.159'	+26.284	159.510064					914.788336
15	249.764'	-18.964'	-20.059'	P89.676'	-29.676'	+11.987	595.270884					227.321468
16	244.745'	-14.745'	-13.998'	P89.146'	-29.146'	-13.063	407.985708			192.613935		
							1162.766656	325.735191	320.508299	1157.539764		
							837.031465					837.031465
							$\frac{1}{2} = 418.5157325$					
17	258.260'	-8.260'	+22.467'	P63.3P2'	-33.392'	-30.231			750.218064	249.708060		
K86	287.271'	-37.271'	+56.707'	P46.281'	-16.928'	-28.690			959.936096	1069.304990		
K87	314.767'	-44.767'	+35.729'	P34.702'	-4.702'	+11.086			167.988354			720.224162
K88	322.748'	-72.748'	+8.548'	P58.014'	-78.014'	+40.746			239.463672			2974.376508
14	323.515'	-73.515'	-58.194'	P75.448'	-45.448'	+19.145	2644.800912					1407.444675
III	264.804'	-14.804'	-65.255'	P77.15P'	-47.159'	-12.056	3077.360545			178.477024		
							5722.161457	2111.806186	1497.490074	5102.045345		
							3604.555271					3604.555271
							$\frac{1}{2} = 1802.2776355$					

面積計算書

工
区

ブ
ロ
ック

7

計
算
者

精
算
者

備
考

巖井 938 (-)

点	①	②	③	④	⑤	⑥	③ × ⑤		② × ⑥	
	X	X - (定数)	X _{n-1} - X _{n+1}	Y	Y - (定数)	Y _{n-1} - Y _{n+1}	+	-	+	-
Ⅱ	-148 264.804	-148,200 64.804	-25.748	-37 977.159	-37,900 77.159	13.207	1,986.689932		855.866428	
17	258.260	58.260	+ 2.698	963.372	63.372	- 17.011		171.031616	1,107.580860	
K.85	267.502	67.502	+ 25.014	958.148	58.148	- 11.876		1,454.514072	801.653752	
35	283.274	83.274	+ 16.506	951.516	51.516	+ 18.451		850.323096		1,536.488574
30	284.008	84.008	- 18.470	976.599	76.599	+ 25.643	1,414.783530			2,154.217144
							3,401.473462	2,475.868784	2,765.101040	3,690.705718
							925.604678			925.604678
							x/2 = 462.802339			
							合筆あり			

面積計算書

工区

大野

ブロック

9

計算者

精算者

備考

地籍
新設

雑地

点	①	②	③	④	⑤	⑥	③ × ⑤		② × ⑥	
	X	X - (定数)	X _{n-1} - X _{n+1}	Y	Y - (定数)	Y _{n-1} - Y _{n+1}	+	-	+	-
K.85	-148, 267.502	-103, 200 67.502	+ 0.128	-39, 958.148	-39, 900 59.148	- 2.976		7.442944	200.885952	
K.86	281.271	87.271	+ 47.465	946.928	46.928	- 23.446		2227.437520	2046.158866	
K.87	314.967	14.967	- 0.128	934.702	34.702	+ 7.976	4.441856			342.147992
K.86A	287.143	87.143	- 47.465	949.904	49.904	+ 23.446	2368.693360			2043.154998
							2373.135216	2234.880464	2247.041818	2385.296570
							138.254752			138.254752
							x 1/2 = 69.127376			
							20.90 ^坪 ≒ 20坪			

面積計算書

工
区

ブ
ロ
ック

9

計
算
者

精
算
者

備
考

地区界変更後 残地(北)

点	①	②	③	④	⑤	⑥	③ × ⑤		② × ⑥	
	X	X-(定数)	X _{n-1} -X _{n+1}	Y	Y-(定数)	Y _{n-1} -Y _{n+1}	+	-	+	-
K.85	-148 267.502	-148,200 67.502	+ 3.997	-39 958.148	-39,905 58.148	- 4.588			232.417556	309.699176
K.86	287.271	87.271	+ 47.465	946.928	46.928	- 23.446			2,227.437520	2,046.155866
K.87	314.967	114.967	+ 18.741	934.702	34.702	- 7.314			650.350182	840.868638
45	306.012	106.012	- 16.619	939.614	39.614	+ 8.865	658.345066			939.776380
37	298.348	98.348	- 18.731	943.567	43.567	+ 10.366	816.053477			1,019.475368
36	287.281	87.281	- 15.074	949.980	49.980	+ 7.949	753.398520			693.796669
35	283.274	83.274	- 17.779	951.516	51.516	+ 8.168	1,018.934964			680.182032
							3,246.732027	3,110.205258	3,196.723680	3,333.250449
							136.526769			136.526769
							x 1/2 = 68.2633845			
							合筆あり			

面積計算書

工区: _____ 9 計算者: _____ 備考: 保9-8 (ニ) 保9-9 (三)

点	①	②	③	④	⑤	⑥	③ × ⑤		② × ⑥		
	X	X - (定数)	X _{n-1} - X _{n+1}	Y	Y - (定数)	Y _{n-1} - Y _{n+1}	+	-	+	-	
30=004	-148,284.008	^{-148,200} 84.008	-	15.815	-39,976.599	^{-39,900} 76.599	-	18.622	1,211.413185		1,564.396976
41	283.450	83.450	+	16.696	957.532	57.532	-	17.521		960.554272	1,629.027450
39	300.704	100.704	+	17.755	957.078	57.078	+	16.565		1,013.419890	1,668.161760
40	301.205	101.205	-	1.439	974.097	74.097	+	19.076	106.625583		1,930.586580
31	299.265	99.265	-	17.197	976.154	76.154	+	2.502	1,309.620338		248.361030
									2,627.659106	1,973.974162	3,193.424426
									653.684944	$\times 1/2 = 326.842472$	653.684944
41	-148,283.450	^{-148,200} 83.450	-	17.430	-39,957.532	^{-39,900} 57.532	-	5.562	1,002.782760		464.148900
35	283.274	83.274	+	3.831	951.516	51.516	-	7.552		197.357796	628.885248
36	287.281	87.281	+	15.074	949.980	49.980	-	7.949		753.398520	693.196669
37	298.348	98.348	+	13.058	943.567	43.567	-	5.278		568.897886	519.080744
38	300.339	100.339	+	2.356	944.702	44.702	+	13.511		105.317912	1,355.680229
39	300.704	100.704	-	16.889	957.078	57.078	+	12.830	963.990342		1,292.032320
									1,966.773102	1,624.972114	2,305.911561
									341.800988		341,800988
									$\times 1/2 = 170.900494$		

面積計算書

工
区

ブ
ロ
ック

9

計
算
者

精
算
者

備
考

保 9-5 (五)

保 9-6 9-7 (七)

点	①	②	③	④	⑤	⑥	③ × ⑤		② × ⑥		
	X	X - (定数)	X _{n-1} - X _{n+1}	Y	Y - (定数)	Y _{n-1} - Y _{n+1}	+	-	+	-	
42	148,305.202	-148,300 / 5.202	- 2.522	39,973.981	-39,900 / 73.981	- 17.367	186.580082			90.343134	
43	304.739	4.739	+ 17.796	958.555	58.555	- 15.967		1,042.044780		75.667613	
K88	322.998	22.998	+ 18.776	958.014	58.014	+ 16.893		1,089.270864			388.505214
14	323.515	23.515	- 15.737	975.448	75.448	+ 17.908	1,187.325176				421.106620
34	307.261	7.261	- 12.313	975.922	75.922	- 1.467	1,390.359506			10.651887	
							2,764.264844	2,131.315644	176.662634		209.611834
							632.949200				632.949200
							x 1/2	316.474600			
43	-148,304.739	-148,300 / 4.739	- 18.738	-39,958.555	-39,900 / 58.555	- 15.446	1,097.203590			73.198594	
44	304.260	4.260	+ 1.273	942.568	42.568	- 18.941		54.189064		80.688660	
45	306.012	6.012	+ 10.707	939.614	39.614	- 7.866		424.147098		47.290392	
K87	314.967	14.967	+ 16.986	934.702	34.702	+ 18.400		589.448172			275.392800
K88	322.998	22.998	+ 10.228	958.014	58.014	+ 23.853	593.367192				648.571294
							1,690.570782	1,067.784334	201.177646		823.964094
							622.786448				622.786448
							x 1/2	311.393224			

面積計算書		工区	ブロック	計算者	精算書	備考		
点	(1)	(2)	(3)	(4)	(5)	(6)	(3) × (5)	(2) × (6)
	X	X - (定数)	X _{n-1} - X _{n+1}	Y	Y - (定数)	Y _{n-1} - Y _{n+1}	+ -	+ -
43	-148,304.739	-148,300 4.739	- 18.566	-39,958.555	-39,940 18.555	- 9.697	344.492130	45.954083
A	-148,304.432	4.432	+ 14.765	-39,948.317	8.317	- 10.685	122.800505	47.355920
B	-148,319.504	19.504	+ 18.566	-39,947.870	7.870	+ 9.697	146.114420	189.130288
K.88	-148,322.998	22.998	- 14.765	-39,958.014	18.014	+ 10.685	265.976710	245.733630
							610.468840	268.914925
							341.553915	93.310003
								434.863918
								341.553915
							x ^{1/2} = 170.7769575	
A	-148,304.432	-148,300 4.432	- 15.264	-39,948.317	-39,900 48.317	- 5.302	736.544348	23.498464
44	-148,304.260	4.260	+ 1.580	-39,942.568	42.568	- 8.703	67.257420	37.074780
45	-148,306.012	6.012	+ 10.707	-39,939.614	39.614	- 7.866	424.147098	47.290392
K.87	-148,314.967	14.967	+ 13.492	-39,934.702	34.702	+ 8.256	460.199384	123.567552
B	-148,319.504	19.504	- 10.535	-39,947.870	47.870	+ 13.615	504.310460	265.546960
							1,240.854798	959.603922
							281.250876	107.862636
								389.114512
								281.250876
							x ^{1/2} = 140.625438	

面積計算書

工区

ブロック

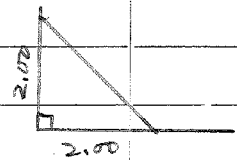
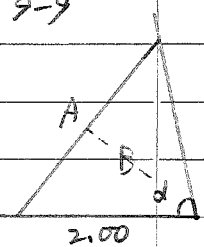
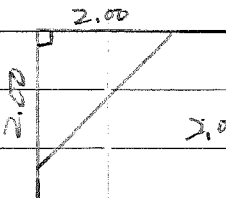
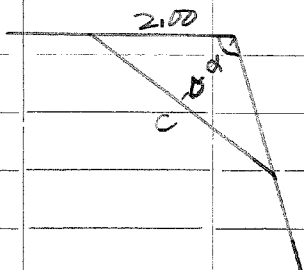
9

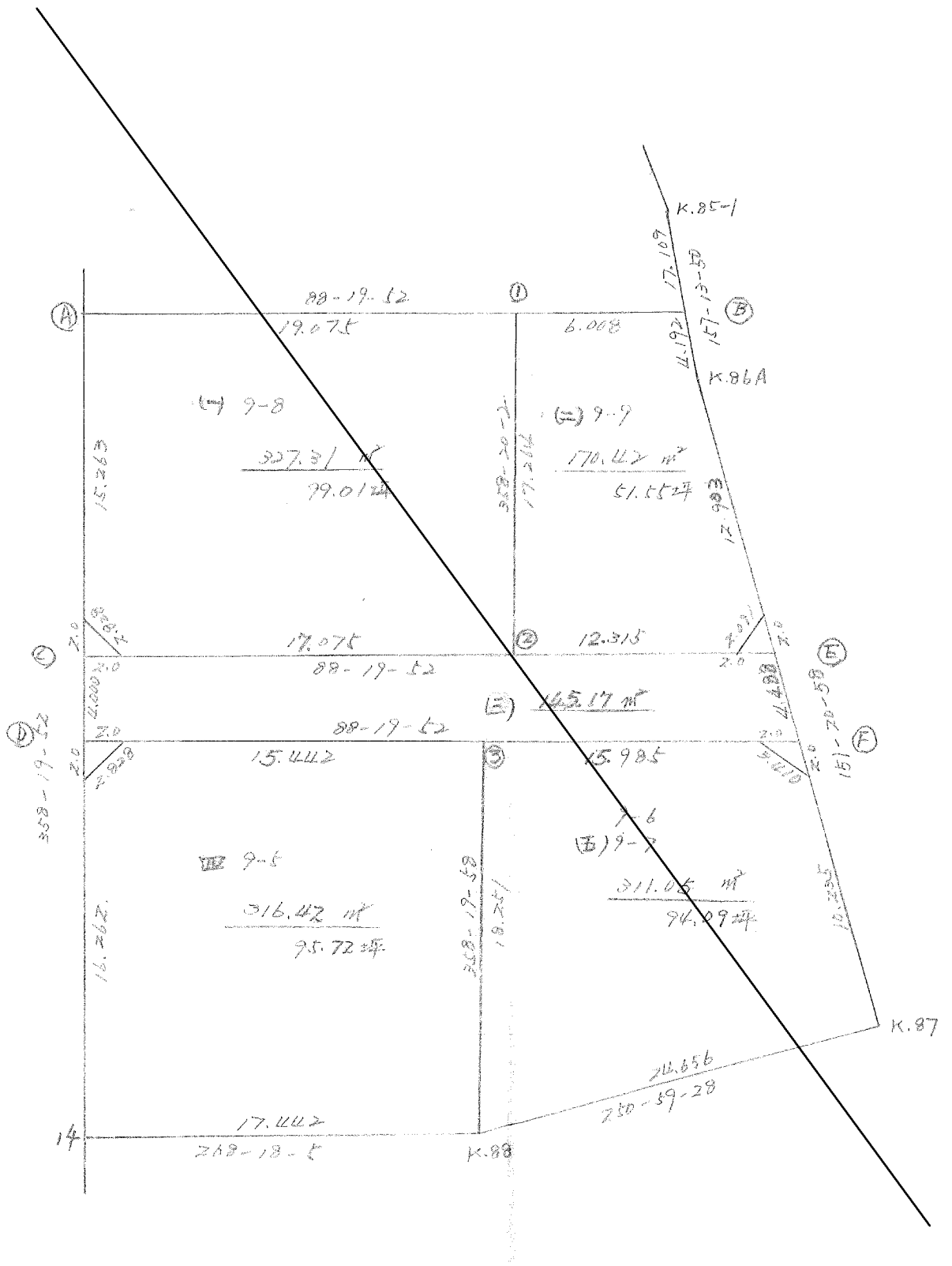
計算者

精算者

備考

道 陽印

点	①	②	③	④	⑤	⑥	③	×	⑤	②	×	⑥
	X	X-(定数)	X _{n-1} -X _{n+1}	Y	Y-(定数)	Y _{n-1} -Y _{n+1}	+		-	+		-
		(2.00)				9-8						
		2.00 X 2.00 X 1/2 = 2.00 M ²										
									$d = 63 - 1 - 6$			
									$\frac{d}{b} = 31 - 00 - 33$	$\sin = 0.522635$		
									$A = 2 \times 2.50 \times \sin = 2.09$	$\cos = 0.852557$		
									$B = 2.00 \times \cos = 1.705$			
									$2.091 \times 1.705 \times 1/2 = 1.7825775$			
												$\approx 1.78 \text{ M}^2$
	9-5											
		2.00 X 2.00 X 1/2 = 2.00 M ²										
									$d = 116 - 58 - 54$	$\sin = 0.852557$		
									$\frac{d}{b} = 58 - 29 - 27$	$\cos = 0.522635$		
									$C = 2 \times 2.00 \times \sin = 3.410$			
									$D = 2.50 \times \cos = 1.045$			
									$3.410 \times 1.045 \times 1/2 = 1.781725$			
												$\approx 1.78 \text{ M}^2$



面積計算書

工区

ブロック

9

計算者



精算者

備考

9-9 (2)

9-6 9-7 (5)

点	①	②	③	④	⑤	⑥	③ × ⑤		② × ⑥	
	X	X-(定数)	X _{n-1} -X _{n+1}	Y	Y-(定数)	Y _{n-1} -Y _{n+1}	+	-	+	-
B	-118,283.278	-118,280	+3.691	-39,951.526	-39,940	-7.627		42,542.666	25,001.306	
K.86A	287.143	7.143	+17.014	949.904	9,904	-8.806		168,506.656	162,901.258	
E	300.292	20.292	+12.566	947.720	7,770	+7.125		36,899.520		144,580.500
㊦	300.709	20.709	-16.840	957.029	17,029	+14.811	286,768.360			306,720.999
㊧	283.452	3.452	-11.431	957.531	17,531	-5.503	305,582.861			18,996.356
							592,351.221	767,948.644	106,898.920	451,301.499
				172.20	1.78		344,402.579			344,402.579
										$X \times Y = 172.201895$
										170.42 m^2
										41.55坪
F	-148,304.230	-148,300	+10.213	-39,940.568	-39,900	-73.843		614,320.980	190,855.890	
K.87	314.967	14.967	+18.768	934.707	34,702	+17.446		651,287.136		261,114.282
K.88	322.998	22.998	-10.213	958.014	58,014	+23.843	592,470.982			548,341.314
㊨	304.754	4.754	-18.768	958.545	58,545	-17.446	1,098,772.560			82,938.284
							169,269.542	1,065,608.120	83,794.174	809,445.596
							625,661.422			625,661.422
				312.83	1.78					$X \times Y = 312.830711$
										94.09坪

面積計算書

工区: _____ ブロック: 9 計算者: _____ 精算書: _____ 備考: _____

点	①	②	③	④	⑤	⑥	③ × ⑤		② × ⑥	
	X	X - (定数)	X _{n-1} - X _{n+1}	Y	Y - (定数)	Y _{n-1} - Y _{n+1}	+	-	+	-
A	-148.304,432	4.432	-15.102	-39.948,317	8.317	-0.553	125.603334		2.450896	
C	304.402	4.402	+14.731	947.317	7.317	-1.437		107.786727	6.325674	
D	319.163	4.163	+15.102	946.880	6.880	+0.553		103.901760		10.597139
B	319.504	4.504	-14.731	947.870	7.870	+1.437	145.932970			28.027248
							241.536304	211.688487	8.776570	38.624387
							29.847817			29.847817
								X ^{1/2} = 14.9239085		
		140.62 - 14.92 = 125.70								

面積計算書

工区

ブロック

計算者



精算者

備考

道路 (3)

点	①	②	③	④	⑤	⑥	③ × ⑤		② × ⑥	
	X	X-(定数)	X _{n-1} -X _{n+1}	Y	Y-(定数)	Y _{n-1} -Y _{n+1}	+	-	+	-
C	148,301.264	-148,300 / 1.264	-4.970	-39,976.096	-39.900 / 76.096	-33.260	378,197.120		42,040.640	
E	300,292	0.292	+2.966	942,720	42.720	-35.528		126,707.520	10,374.176	
F	304,230	4.230	+4.970	940,568	40.568	+33.260		201,622.960		140,689.800
D	305,262	5.262	-2.966	975,980	75.980	+25.528	225,356.680			186,940.336
							603,553.800	328,330.680	52,414.816	327,638.136
							275,223.320			275,223.320
										$\times \frac{1}{2} = 137,611.660$
				127.674						$137.674 + (2.00 + 2.00 + 1.78 + 1.78) = 145.17$

面積計算書

工
区

ブ
ロ
ック

9

計
算
者

精
算
者

備
考

9-8 (1)
9-5 (4)

点	①	②	③	④	⑤	⑥	③ × ⑤		② × ⑥	
	X	X - (定数)	X _{n-1} - X _{n+1}	Y	Y - (定数)	Y _{n-1} - Y _{n+1}	+	-	+	-
A	118,284.008	4.008	-17.812	-39,976.599	26.599	-18.565	473.781388		74,408.520	
①	282.452	3.452	+16.701	957.531	7.531	-19.570		125.775231	67,555.640	
②	300.709	20.709	+17.812	957.029	7.029	+18.565		125.200518		384,462.585
C	301.264	21.264	-16.701	976.096	26.096	+19.570	435.829296			416,136.480
							909,610,684	250,975,779	161,964,160	800,599,065
				329.31	-2.00 = 327.31 m ²		658,634,905			658,634,905
					99.01坪					
									x 1/2 = 329.3174525	
D	-148,305.262	5.262	-18.761	-39,975.980	25.980	-16.703	487,410,780		88,943,586	
③	304.754	4.754	+17.736	958.545	8.545	-17.966		151,554,120	85,410,364	
K88	322.998	22.998	+18.761	958.014	8.014	+16.903		150,350,654		388,735,194
14	323.515	23.515	-17.736	975.448	25.448	+17.966	451,345,728			422,470,490
							938,756,508	301,904,718	174,353,952	811,205,684
							636,851,734			636,851,734
				318.42	-200 = 316.42 m ²					
					95.72坪					
									x 1/2 = 318.425867	

面積計算書

工
区

ブ
ロ
ック

計算者

精算者

備考

道路 (四) 9-7

点	①	②	③	④	⑤	⑥	③ × ⑤		② × ⑥	
	X	X - (定数)	X _{n-1} - X _{n+1}	Y	Y - (定数)	Y _{n-1} - Y _{n+1}	+	-	+	-
	-148,	-148.200 /		-39.	-39.900					
31	299.265	99.265	- 6.056	976.154	76.154	- 1.825	461.188624		181.158625	
40	301.205	101.205	+ 1.074	974.097	74.097	- 31.452		79.580178	3,183.099660	
38	300.339	100.339	- 2.857	944.702	44.702	- 30.530	127.713614		3,063.349670	
37	298.348	98.348	+ 5.673	943.567	43.567	- 5.088		247.155591	500.394624	
45	306.012	106.012	+ 5.912	939.614	39.614	- 0.999		234.197968	105.905988	
44	304.260	104.260	- 0.810	942.568	42.568	+ 34.367	344.80080			3,583.103420
42	305.202	105.202	+ 3.00	973.981	73.981	+ 33.354		222.016981		3,508.907508
34	307.261	107.261	- 5.937	975.922	75.922	+ 2.173	450.748914			233.078153
							1,074.131232	782.950718	7,033.908567	7,325.089081
							291.180514			291.180514
								X ¹ / ₂ = 145.590257		

元地938の誤差
145.59 + 0.02 = 145.61

面積計算書

工区

ブロック

9

計算者

精算者

備考

3. 保 9-1号
4. 保 9-4号

点	①	②	③	④	⑤	⑥	③ × ⑤		② × ⑥	
	X	X-(定数)	X _{n-1} -X _{n+1}	Y	Y-(定数)	Y _{n-1} -Y _{n+1}	+	-	+	-
K.88	-148,322.998	-148,320 / 2.998	+ 8.401	-39,988.014	-39,940 / 18.014	-21.806		151,335.614	65,374.388	
K89	331.916	11.916	+ 16.838	953.642	13.642	-9.018		229,703.996	107,458.488	
K90	339.836	19.836	+ 9.180	948.996	8.996	-5.468		82,583.280	108,463.248	
18	341.096	21.096	+ 2.038	948.174	8.174	+25.917		16,658.612		546,745.032
13	341.874	21.874	- 17.581	974.913	34.913	+27.274	613,805.453			596,591.476
14	323.515	3.515	- 18.876	975.448	35.448	-16.899	669,116.448			59,399.985
							1282,921.901	480,281.502	340,696.109	1143,336.508
							802,640.399			802,640.399
								X ^{1/2} = 401.320 1995		
18	-148,344.096	-148,340 / 1.096	+ 10.548	-39,948.174	-39,940 / 8.174	-34.128		86,219.352	37,404.288	
K91	352.422	12.422	+ 17.109	940.785	0.785	+ 6.624		13,430.565		82,283.328
K92	358.205	18.205	+ 7.345	954.798	14.798	+18.942		108,691.310		344,839.110
K93	359.767	19.767	+ 2.027	959.727	19.727	+19.580		39,986.629		387,037.860
12	360.232	20.232	- 17.893	974.378	34.378	+ 15.186	615,125.554			307,243.152
13	341.874	1.874	- 19.136	974.913	34.913	-26.204	668,095.168			49,106.296
							1283,220.722	248,327.856	86,510.584	1121,403.450
							1034,892.866			1034,892.866

三和測量建設株式会社

X^{1/2} = 517.4464331

面積計算書

工
区

ブ
ロ
ック

9

計
算
者

精
算
者

備
考

保9-4-1

点	①	②	③	④	⑤	⑥	③ × ⑤		② × ⑥	
	X	X-(定数)	X _{n-1} -X _{n+1}	Y	Y-(定数)	Y _{n-1} -Y _{n+1}	+	-	+	-
13	-148.361 341.874	-148.361 1.874	-3.777	-39. 974.913	-39.900 74.913	-26.652	282.946401		49.945848	
18	341.096	1.096	+10.568	948.174	68.174	-34.128		508.139352	37.404288	
K.91	352.422	7.422	+17.109	940.785	40.785	+6.624		697.790565		82.283328
K.92	358.205	18.205	+6.515	954.798	54.798	+16.322		357.008970		297.162010
50	358.937	18.937	-15.835	957.107	57.107	+2.733	790.075245			51.754821
51	344.370	4.370	-14.064	957.531	57.531	+17.719	809.115984			77.432030
12'	344.873	4.873	-2.496	974.876	74.826	+17.382	186.765696			84.702486
							2068.903426	1562.938887	87.350136	593.316675
							505.964537			505.964537
								$\times \frac{1}{2} =$	252.9822695	

面積計算書							工区	ブロック	9	計算者	精算者	備考
点	①	②	③	④	⑤	⑥	③ × ⑤		② × ⑥			
	X	X-(定数)	X _{n-1} -X _{n+1}	Y	Y-(定数)	Y _{n-1} -Y _{n+1}	+	-	+	-		
12	^{-148.} 344.873	^{-148.340} 4.873	-15.862	^{-39.} 974.826	^{-39.950} 24.826	-16.847	393.790012		82.095431			
51	344.370	4.370	+14.064	957.531	7.531	-17.719		105.915984	77.432030			
50	358.937	9.937	+15.397	957.107	7.107	+2.196		109.426479		41585652		
K-93	359.767	19.767	+1.295	959.727	9.727	+17.271		12.596465		361.395857		
12	360.232	20.232	-14.894	974.378	24.378	+15.099	363.085932			305.482968		
							756.875944	227.938928	159.527461	688.464477		
							528.937016			528.937016		
								$\times \frac{1}{2}$	264.468508			

面積計算書

工区

ブロック

9

計算者



精算者

備考

5 俵 9-2号
6 俵 9-3号

点	①	②	③	④	⑤	⑥	③ × ⑤		② × ⑥	
	X	X-(定数)	X _{n-1} -X _{n+1}	Y	Y-(定数)	Y _{n-1} -Y _{n+1}	+	-	+	-
	-148	148.360		-3P	39.950					
1P	360.766	-0.766	+17.156	PSP.6P7	-9.697	-15.247		185.755732	11.679202	
1P	380.388	-20.388	+20.051	PSP.1021	-9.102	+14.082		182.504202		287.103816
10	380.817	-20.817	-19.156	973.779	-23.779	+15.247	455.510524			317.396799
11	361.232	-1.232	-20.051	974.349	-24.349	-14.082	488.221799		17.349024	
							943.732323	368.259934	29.028226	604.500615
							575.472389			575.472389
									1/2 = 287.73619451	
	-148	148.380		-3P	39.950					
19	380.388	-0.388	+17.606	PSP.1021	-9.102	-15.224		160.249812	5.906912	
20	388.423	-18.423	+18.431	PSP.555	-18.555	+14.152		157.677205		260.722296
9	388.819	-18.819	-17.606	973.254	-23.254	+15.224	409.409924			286.500456
10	380.817	0.817	-18.431	973.779	-23.779	-14.152	498.270749		11.562184	
							847.680673	317.927017	17.469096	547.222752
							529.753656			529.753656
									1/2 = 264.8768281	

面積計算書

工
区

ブ
ロ
ック

9

計
算
者



計
算
者

備
考

7.
8

巻 # 933

席 # 934-4(4)

点	①	②	③	④	⑤	⑥	③ × ⑤		② × ⑥	
	X	X-(定数)	X _{n-1} -X _{n+1}	Y	Y-(定数)	Y _{n-1} -Y _{n+1}	+	-	+	-
	-148	148.390		-3P	39.950					
20	318.423	8.423	+21.299	958.555	8.555	-15.356		182.212945	129.343588	
K94	420.118	30.118	+22.105	957.898	7.898	+14.067		174.585290		423.669906
a	420.528	30.528	-21.299	972.622	22.622	+15.356	481.825978			468.787968
P	398.819	8.819	-22.105	973.254	23.254	-14.067	514.029170		124.056873	
							995.855648	356.798235	253.400461	892.457874
							639.057413			639.057413
							1/2 = 319.5287065			
	-148	148.420		-3P	39.940					
K95	420.688	0.688	+22.121	947.510	7.510	-11.044		66.128710	7.598272	
5	442.239	22.239	+22.281	946.854	6.854	+21.456		152.713974		477.159984
6	442.969	22.969	-2.170	968.966	28.966	+25.198	62.856220			578.772862
7	440.069	20.069	-22.441	972.052	32.052	+3.656	719.278932			73.372264
8	420.528	0.528	-19.951	972.622	32.622	-14.154	650.841522		7.473312	
K94	420.118	0.118	+0.160	957.898	17.898	-25.112		2.863680	2.963216	
							1432.976674	321.706364	18.034800	1129.305110
							1111.270310			1111.270310
							1/2 = 555.635155			

面積計算書

工
区

ブ
ロ
ック

9

計
算
者

精
算
者

備
考

隅切Ⅱ、Ⅶ

点	①	②	③	④	⑤	⑥	③ × ⑤	② × ⑥
	X	X-(定数)	X _{n-1} -X _{n+1}	Y	Y-(定数)	Y _{n-1} -Y _{n+1}	+ -	+ -
6	⁻¹⁰⁸ 442.464	^{428.440} -2.969	+2.999	^{-3A} 462.466	^{39.980} -8.966	-0.087	26.889034	0.258303
Ⅱ	443.068	-3.068	-2.900	471.465	+1.965	+3.086	34.698500	9.467848
7	440.064	-0.069	-0.099	472.052	+12.052	-2.999	1.193148	0.206931
							35.891648	26.889034
							9.002614	0.465234
								9.467848
								9.002614
								$\frac{1}{2} = 4.501307 \approx 4.50 \text{ m}^2$
15	⁻¹⁰⁸ 248.464	^{428.240} -8.964	+1.865	^{-3A} 484.476	^{39.980} -9.696	+2.390	18.045740	21.423960
Ⅶ	246.610	-6.610	-4.219	491.536	+11.536	-0.530	48.670384	3.503300
16	244.745	-4.745	+2.354	484.467	+9.146	-1.860	21.529684	8.825700
							48.670384	39.575424
							9.094960	12.329000
								21.423960
								9.094960
								$\frac{1}{2} = 4.547480 = 4.54 \text{ m}^2$

面積計算書

工区

ブロック

9

計算者

精算者

備考

水路 15号線) 2M
泥上

点	①	②	③	④	⑤	⑥	③ × ⑤		② × ⑥	
	X	X-(定数)	X _{n-1} -X _{n+1}	Y	Y-(定数)	Y _{n-1} -Y _{n+1}	+	-	+	-
K96	-148 422.382	148420 - 2.382	+20.660	-3A 445.502	39920 - 5.502	-1.690			113.671320	4.023198
3	442.173	-22.173	+19.824	444.843	-4.843	+0.340			96.007632	7.538820
4	442.206	-22.206	-20.660	445.842	-5.842	+1.690	120.695720			37.505934
21	421.513	-1.513	-19.824	446.532	-6.532	-0.340	129.490368			0.514420
							250.186088	209.678952	4.537618	45.444754
							40.507136			40.507136
									1/2 = 20.253588 ≈ 20.25m ²	
21	-148 421.513	148420 - 1.513	+21.518	-3A 446.532	39920 - 6.532	-1.668			140.555576	2.523684
4	442.206	-22.206	+20.726	445.842	-5.842	+0.322			121.081292	7.150332
5	442.239	-22.239	-21.518	446.854	-6.854	+1.668	147.484372			37.094652
K95	420.688	-0.688	-20.726	447.510	-7.510	-0.322	155.652260			0.221536
							303.136632	261.636868	2.745220	44.244984
							41.599764			41.599764
									1/2 = 20.799882 ≈ 20.80m ²	

面積計算書

工
区

ブ
ロ
ック

9

計算者

精算者

備考

水路16号線

1M

点	①	②	③	④	⑤	⑥	③ ×	⑤	② ×	⑥
	X	X-(定数)	X _{n-1} -X _{n+1}	Y	Y-(定数)	Y _{n-1} -Y _{n+1}	+	-	+	-
K90	⁻¹⁴⁸ 359.767	¹⁴⁸³⁵⁰ -9.767	+0.534	^{-3P} 359.727	³⁹⁹⁵⁰ -9.727	-14.681		5.194218	143.389327	
1P'	360.766	-10.766	+1.465	360.697	-9.697	+14.622		14.206105		157.420452
11	361.232	-11.232	-0.534	374.349	+24.349	+14.681	13.002366			164.896992
12	360.232	10.232	-1.465	374.378	+24.378	-14.622	35.713770		149.612304	
							48.716136	19.400323	293.001631	322.317444
							29.315813			29.315813
								1/2 = 14.6579065		≒ 14.6579

計 年 月 日	計 算 者	檢 查 者
------------------	-------------	-------------

B.NO. 9

各筆面積計算書

地番	算式	隅切	地積	摘要
1	巖井 944-1 (D)		418.51	
2	巖井 938		1,802.27	別紙別
3	保 9-1号		401.32	
4	保 9-4号		517.44	
5	保 9-2号		287.73	
6	保 9-3号		264.87	
7	巖井 933		319.52	
8	巖井 934-4 (D)		555.63	
		合計	4567.29	
		全面積	4567.31	
		差	-0.02	
	空地面積		3,095.93	4筆
	保留地面積		1,471.36	4筆
	(水路面積		34.90	2筆)
	泥上面積		20.80	1筆)
	水路 15号線 2M		41.05	泥上名地
	水路 16号線 1M		14.65	