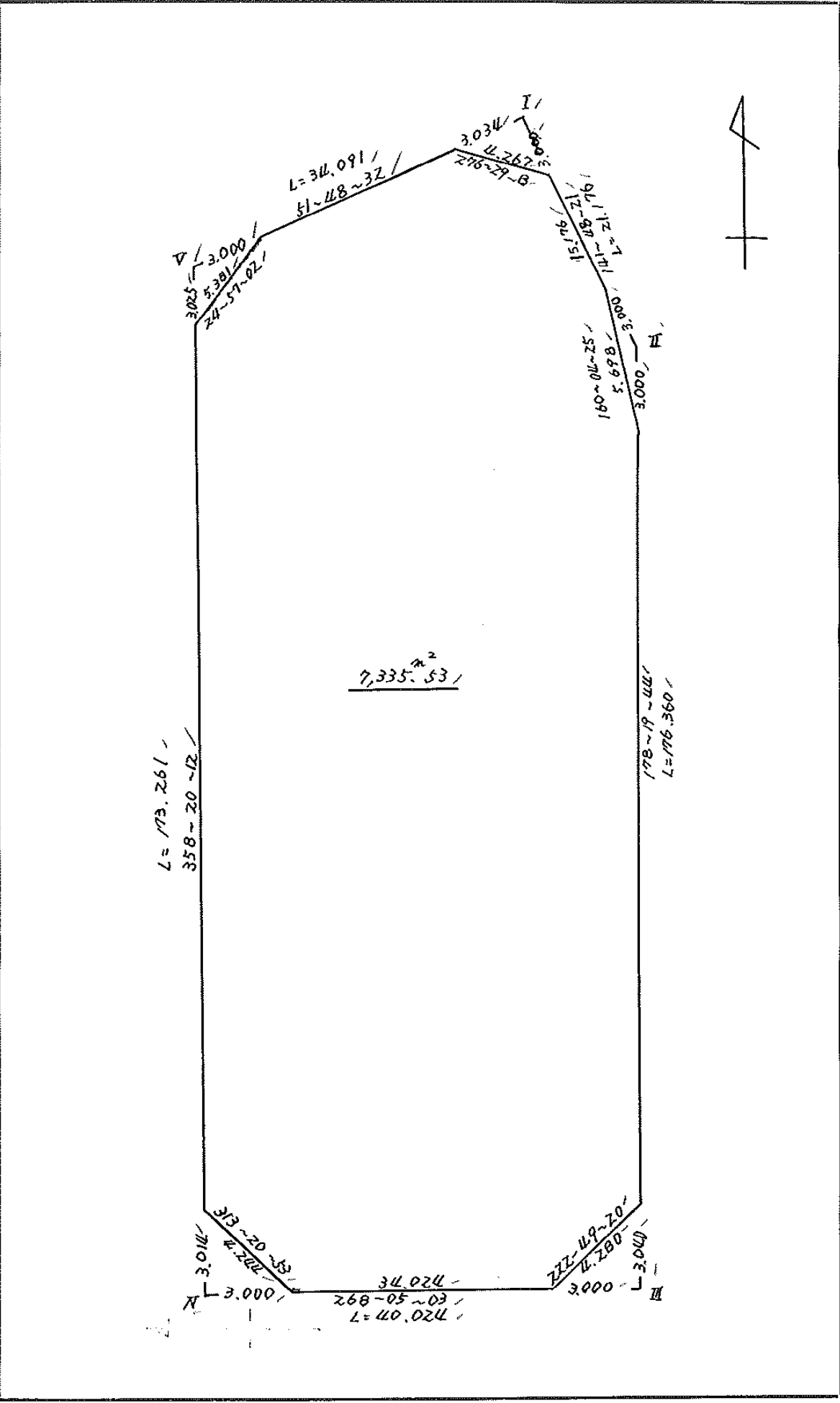


街区略図	工区	ブロック	10	記入者	点検者
------	----	------	----	-----	-----



# 面積計算書

工  
区

ブ  
ロ  
ック

10

計  
算  
者



精  
算  
者

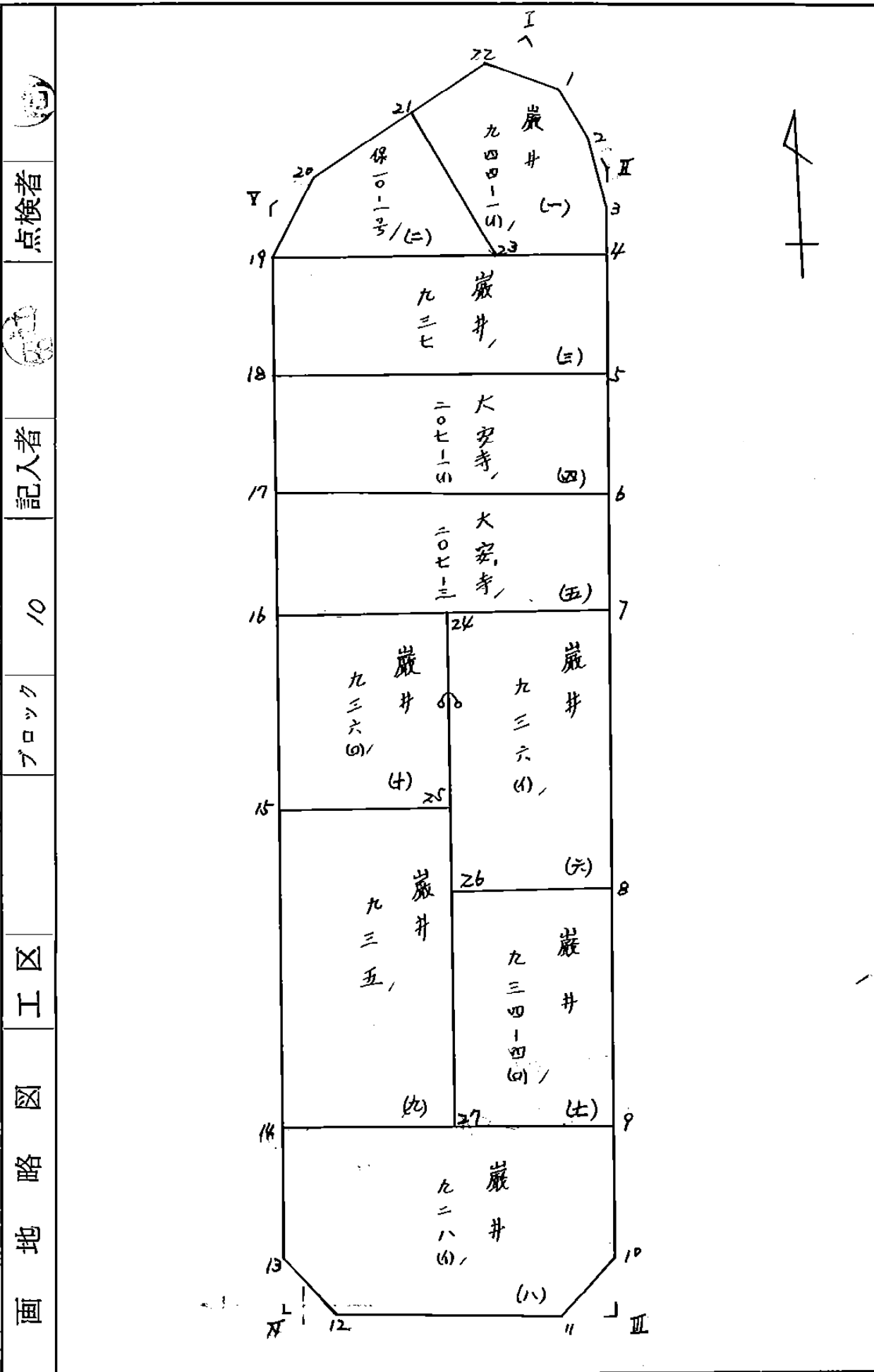


備  
考

全  
体

点	①	②	③	④	⑤	⑥	③ × ⑤		② × ⑥	
	X	X-(定数)	X <sub>n-1</sub> -X <sub>n+1</sub>	Y	Y-(定数)	Y <sub>n-1</sub> -Y <sub>n+1</sub>	+	-	+	-
I	<del>-148,250.936</del>	<del>0.336</del>	<del>-4.435</del>	<del>-39,996.205</del>	<del>26.205</del>	<del>-39.888</del>	116,219.175		13,102.368	
II	266.979	16.979	+192.928	983.111	13.111	-18.237		2529.479008	309.646023	
III	443.241	193.264	+177.623	977.968	7.968	+34.859		1415.300064		6736.989776
IV	444.602	194.602	-171.850	-40,017.970	47.970	+45.031	8223.644500			8763.122662
V	271.414	21.414	-194.266	022.999	52.999	-21.765	10,295.903734		466.075710	
							18,655.747409	3944,779072	789,124.101	15300,112438
							14710,988337			14710,988337
										$\times 1/2 = 7355.4941685$
										$7355.49 - (4.55 + 2.68 + 4.56 + 4.52 + 3.65) = 7335.53$
										"
										19.96

# 画地計算



(地)

点検者

(印)

記入者

10

ブロック

区

工

路

画

# 面積計算書

工  
区

フ  
ロ  
ック

10

計  
算  
者

計  
算  
者

備  
考

1 番# 944-1(4)  
2 保 10-1号

点	①	②	③	④	⑤	⑥	③ × ⑤		② × ⑥	
	X	X-(定数)	X <sub>n-1</sub> -X <sub>n+1</sub>	Y	Y-(定数)	Y <sub>n-1</sub> -Y <sub>n+1</sub>	+	-	+	-
	-129	148.250		-39	39.980					
1	262.644'	-2.694'	+12.409	264.250'	-14.350'	-13.624		178.269150	36.703056	
2	264.621'	-14.621'	+17.284	284.666'	4.966'	-11.326		85.832344	165.597446	
3	269.978'	-19.978'	+8.605	283.024'	-3.024'	-2.037		26.021520	40.895186	
4	273.226'	-23.226'	+3.636	282.929'	-2.929'	+12.712		10.649844		295.248912
23	273.614'	-23.614'	-14.226	285.736'	-15.736'	+24.290	223.860336			573.584050
21	259.000'	-9.000'	-21.402	40 007.219'	-27.219'	+2.854	582.541038			25.186000
22	252.212'	-2.212'	-6.306	-39 289.590'	-18.590'	-12.869	117.228540			28.466238
							923.629914	300.572858	271.461216	894.518972
							623.057056			623.057056
									$\frac{1}{2} = 311.528528$	
21	-148 259.000'	148.250 -9.000'	+4.055	-40 007.219'	39.990 -17.219'	-24.905		67.823065	224.145000	
23	273.614'	-23.614'	+15.438	-39 285.736'	-5.736'	+15.692		88.552368		370.550888
19	274.438'	-24.438'	-4.055	40 022.911'	-32.911'	+24.905	133.454105			608.628390
20	269.559'	-19.559'	-15.438	40 020.641'	-30.641'	-15.692	473.035758			306.919828
							606.429863	158.375413	531.064828	979.179228
							4418.114650			4418.114650
									$\frac{1}{2} = 221.057225$	

# 面積計算書

工区

ブロック

10

計算者



精算者



備考

W 番# 937  
L 大守寺. 207-1(4)

点	①	②	③	④	⑤	⑥	③ × ⑤		② × ⑥	
	X	X-(定数)	X <sub>n-1</sub> -X <sub>n+1</sub>	Y	Y-(定数)	Y <sub>n-1</sub> -Y <sub>n+1</sub>	+	-	+	-
4	<sup>-148</sup> 273.226'	<sup>148.270</sup> -3.226'	+23.834	<sup>-34</sup> 182.124'	<sup>39.980</sup> -2.929'	-40.713			59.809726	131.340138
5	248.272'	-28.272'	+26.239	182.148'	-2.198'	+39.255			57.673322	1109.817360
18	244.465'	-29.465'	-23.834	<sup>-40</sup> 022.184'	-42.184'	+40.713	1005.423456			1199.608545
19	274.438'	-4.438'	-26.239	022.111'	-42.911'	-39.255	1125.941729			174.213670
							2131.355185	127.483108	305.553828	2329.425905
							2003.872077			2003.872077
										$V_2 = 1001.9360385 /$
5	<sup>-148</sup> 248.272'	<sup>148.270</sup> -8.272'	+24.552	<sup>-34</sup> 182.198'	<sup>39.980</sup> -2.198'	-40.737			53.965296	236.976464
6	324.017'	-34.017'	+26.937	981.447'	-1.447'	+39.239			38.977839	1334.793063
17	325.209'	-35.209'	-24.552	<sup>-40</sup> 021.437'	-41.437'	+40.737	1017.361224			1434.309033
18	244.465'	-9.465'	-26.937	022.184'	-42.184'	-39.239	1136.310408			371.397135
							2153.671632	92.943135	708.373599	2769.102096
							2060.728497			2060.728497
										$V_2 = 1030.3642485 /$

# 面積計算書

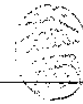
工  
区

フ  
ロ  
ック

10

計  
算  
者

精  
算  
者



備  
考

5 大塚 207-3  
6 番 # 936 (1)

点	①	②	③	④	⑤	⑥	③ × ⑤		② × ⑥	
	X	X - (定数)	X <sub>n-1</sub> - X <sub>n+1</sub>	Y	Y - (定数)	Y <sub>n-1</sub> - Y <sub>n+1</sub>	+	-	+	-
6	<sup>-148</sup> 224.017	<sup>148.320</sup> -4.017	+16.273	<sup>-39</sup> 981.447	<sup>39.980</sup> -1.447	-40.500		23.547031	162.688500	
7	241.482	-21.482	+18.655	980.937	-0.937	+39.483		17.479735		848.173806
16	<sup>-40</sup> 242.672	<sup>40</sup> -22.672	-16.273	020.930	+40.930	+40.500	666.053890			918.216000
17	225.209	-5.209	-18.655	021.437	-41.437	-39.483	773.007235		205.666947	
							1439.061125	41.026766	368.355447	1766.389806
							1398.034359			1398.034359
										$\frac{1}{2} = 699.0171795$
7	<sup>-148</sup> 241.482	<sup>148.320</sup> -1.482	+37.767	<sup>-39</sup> 980.937	<sup>39.970</sup> -10.937	-21.116		443.057679	31.293912	
8	279.844	-39.844	+38.958	979.818	-9.818	+18.880		382.489644		752.254720
26	280.440	-40.440	-37.767	999.817	-29.817	+21.116	1126.098639			853.931040
24	<sup>-40</sup> 242.077	<sup>40</sup> -2.077	-38.958	000.934	+30.934	-18.880	1205.126772		39.213760	
							2331.225411	795.547323	70.507672	1606.185760
							1535.678088			1535.678088
										$\frac{1}{2} = 767.839044$

# 面積計算書

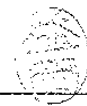
工区

ブロック

10

計算者

精算者



備考

7 番# 934-4(0)  
8 番# 928(1)

点	①	②	③	④	⑤	⑥	③ × ⑤		② × ⑥	
	X	X-(定数)	X <sub>n-1</sub> -X <sub>n+1</sub>	Y	Y-(定数)	Y <sub>n-1</sub> -Y <sub>n+1</sub>	+	-	+	-
	-148	148.370		-37	39.970					
8	379.844'	-9.844'	+42.131	979.818'	-9.818'	-21.245		413.642158	209.135780	
9	422.571'	-52.571'	+43.323	978.572'	-8.572'	+18.755		371.364756		985.969105
27	423.167'	-53.167'	-42.131	998.573'	-28.573'	+21.245	1203809063			1129.532915
26	320.440'	-10.440'	-43.323	999.817'	-29.817'	-18.755	1291.761891		195.802200	
								2495.570954	785.006914	404.93798
										2115.502020
								1710.564000		1710.564000
										$V_2 = 855.282020$
	-148	148.420		-37	39.970					
9	422.571'	-2.571'	+16.452	978.572'	-8.572'	-40.518		141.112264	104.171778	
10	440.225'	-20.225'	+20.793	978.057'	-8.057'	+2.394		167.529201		48.418650
11	423.364'	-23.364'	+4.277	980.966'	-10.966'	+36.914		46.901582		862.458696
12	444.502'	-24.502'	-1.775	914.971'	-44.971'	+37.091	79.823525			908.863682
13	441.589'	-21.589'	-20.739	918.057'	-48.057'	+3.604	996.654123			77.806756
14	423.763'	-3.763'	-19.018	918.575'	-48.575'	-39.485	923.799350		148.582058	
								2000.276998	355.543447	252.753833
										1897.481784
								1144.733951		1644.733951
										$V_2 = 822.366975$



# 面積計算書

工  
区

ブ  
ロ  
ック

10

計  
算  
者

計  
算  
者



備  
考

9 番 # 935  
10 番 # 936 (10)

点	①	②	③	④	⑤	⑥	③ × ⑤		② × ⑥		
	X	X-(定数)	X <sub>n-1</sub> -X <sub>n+1</sub>	Y	Y-(定数)	Y <sub>n-1</sub> -Y <sub>n+1</sub>	+	-	+	-	
25	<sup>-148</sup> 369.283	<sup>148.360</sup> -9.283	+53.289	<sup>-40</sup> 000.142	<sup>39.990</sup> -10.142	-21.567		540.457038	200.206461		
27	423.167	-63.167	+54.480	<sup>-3P</sup> 008.573	-8.573	+18.433		467.057000		1164.357311	
14	423.763	-63.763	-53.289	<sup>-40</sup> 018.575	-28.575	+21.567	1522.733175			1375.176621	
15	369.878	-9.878	-54.480	<sup>-40</sup> 020.140	-30.140	-18.433	1642.027200		182.081174		
								3164.0760375	1007.5114078	382.287635	2539.533932
								2157.246297			2157.246297
											$\frac{1}{2} = 1078.6231485$
24	<sup>-148</sup> 342.077	<sup>148.360</sup> -2.077	+28.611	<sup>-40</sup> 000.934	-0.934	-20.788		24.854670	43.176676		
25	369.283	-29.283	+27.801	000.142	+0.142	+19.206		3.947742		562.109288	
15	369.878	-29.878	-26.611	020.140	-20.140	+20.788	535.945540			621.103864	
16	342.672	-2.672	-27.861	020.930	-20.930	-19.206	581.874930		51.378432		
								1117.820470	28.80241694	475.108	1183.513162
								1089.018054			1089.018054
											$\frac{1}{2} = 544.509027$

# 面積計算書

工  
区

ブ  
ロ  
ック

10

計  
算  
者

精  
算  
者

備  
考

陽カ工、Ⅱ

点	①	②	③	④	⑤	⑥	③ × ⑤		② × ⑥	
	X	X-(定数)	X <sub>n-1</sub> -X <sub>n+1</sub>	Y	Y-(定数)	Y <sub>n-1</sub> -Y <sub>n+1</sub>	+	-	+	-
I	-148 250.336'	108.250 -0.336'	+0.482	-39 996.205'	39.990 -6.205'	-4.240		2.990810	1.424640	
1	252.694'	-2.694'	+1.876	994.350'	-4.350'	+2.385		8.160600		6.425190
22	252.212'	-2.212'	-2.358	998.590'	-8.590'	+1.855	20.255220			4.103260
							20.255220	11.151410	1.424640	10.52845
							9.103810			9.103810
										$\frac{1}{2} 34,551905' \div 4.55^{m^2}$
Σ	-148 264.621'	108.260 -4.621'	-2.999	-39 984.966'	39.980 -4.966'	+0.087	14.993034			0.402027
Ⅱ	266.979'	-6.979'	+5.357	983.111'	-3.111'	-1.942		16.665627	13.553218	
3	269.978'	-9.978'	-2.358	983.024'	-3.024'	+1.855	7.130592			18.509190
							22.023626	16.665627	13.553218	18.911217
							5.357999			5.357999
										$\frac{1}{2} = 2,6789995'$ $\div 2.69^{m^2}$ $2.70^{m^2}$

面積計算書						工区	ブロック	10	計算者	精算者	備考	陽切Ⅲ,Ⅳ
点	①	②	③	④	⑤	⑥	③ × ⑤	② × ⑥				
	X	X-(定数)	X <sub>n-1</sub> -X <sub>n+1</sub>	Y	Y-(定数)	Y <sub>n-1</sub> -Y <sub>n+1</sub>	+	-				
	-148	148.400		-39	39.970							
10	440.225	-0.225	-0.100	978.057	-8.057	-2.998	0.805700	0.674550				
Ⅳ	443.264	-3.264	+3.139	977.968	-7.968	+2.909		26.017552	9.494976			
11	443.364	-3.364	-3.039	980.966	-10.966	+0.089	33.325674		0.299396			
							34.131374	25.011552	0.674550	9.774372		
							9.419822			9.119822		
											$\frac{1}{2} = 4.559911$ $\approx 4.56 m^2$	
	-148	148.400		-40	40.010							
12	444.502	-4.502	+3.013	014.971	-4.971	-0.687		14.977623	0.391674			
Ⅳ	444.602	-4.602	-2.913	017.970	-7.970	+3.086	23.216610			14.201772		
13	441.589	-1.589	-0.100	018.057	-8.057	-2.999	0.805700	4.765411				
							26.022310	14.977623	5.157085			
							9.044687			9.044687		
											$\frac{1}{2} = 4.5223435$ $\approx 4.52 m^2$	

# 面積計算書

工 区  
 フ ロ ッ ク  
 ID  
 計 算 者  
 精 算 者  
 備 考

隅切  $\nabla$

点	①	②	③	④	⑤	⑥	③ × ⑤	② × ⑥		
	X	X-(定数)	X <sub>n-1</sub> -X <sub>n+1</sub>	Y	Y-(定数)	Y <sub>n-1</sub> -Y <sub>n+1</sub>			+	-
19	<sup>-148</sup> 274.438'	<sup>148.260</sup> -14.438'	+1.855	<sup>-40</sup> 022.911'	<sup>40.020</sup> -2.911'	+2.358		5.399.05	34.044804	
$\nabla$	271.414'	-11.414'	-4.879	022.999'	-2.999'	-2.270	14.632121		25.909780	
20	269.559'	-7.559'	+3.024	020.641'	-0.641'	-0.088		1.938.384	0.841192	
							14.632121	7.338.289	26.750.972	34.044804
							7.293832			7.293832
							$\frac{1}{2} = 3.646916'$			
										$\approx 3.65 m^2$

計年  
月  
算日

計  
算  
者

檢  
查  
者

B.NO. 10

各筆面積計算書

地番	算式	隅切	地積	摘要
1	巖 944-1 (1) /		311.52 /	
2	保 10-1 /		224.05 /	
3	巖 937 /		1,001.93 /	
4	大崎 207-1 (1) /		1,030.36 /	
5	" 207-3 /		699.01 /	
6	巖 936 (1) /		767.83 /	
7	" 934-4 (1) /		855.28 /	
8	" 928 (1) /		822.36 /	
9	" 935 /		1,078.62 /	
10	" 936 (2) /		544.50 /	
	合計		7,335.46 /	
	全体面積		7,335.53 /	
		差引	-0.07 /	
	宅地面積		7,111.41 /	9筆
	保留地		224.05 /	1筆
			7,335.46 /	10筆