

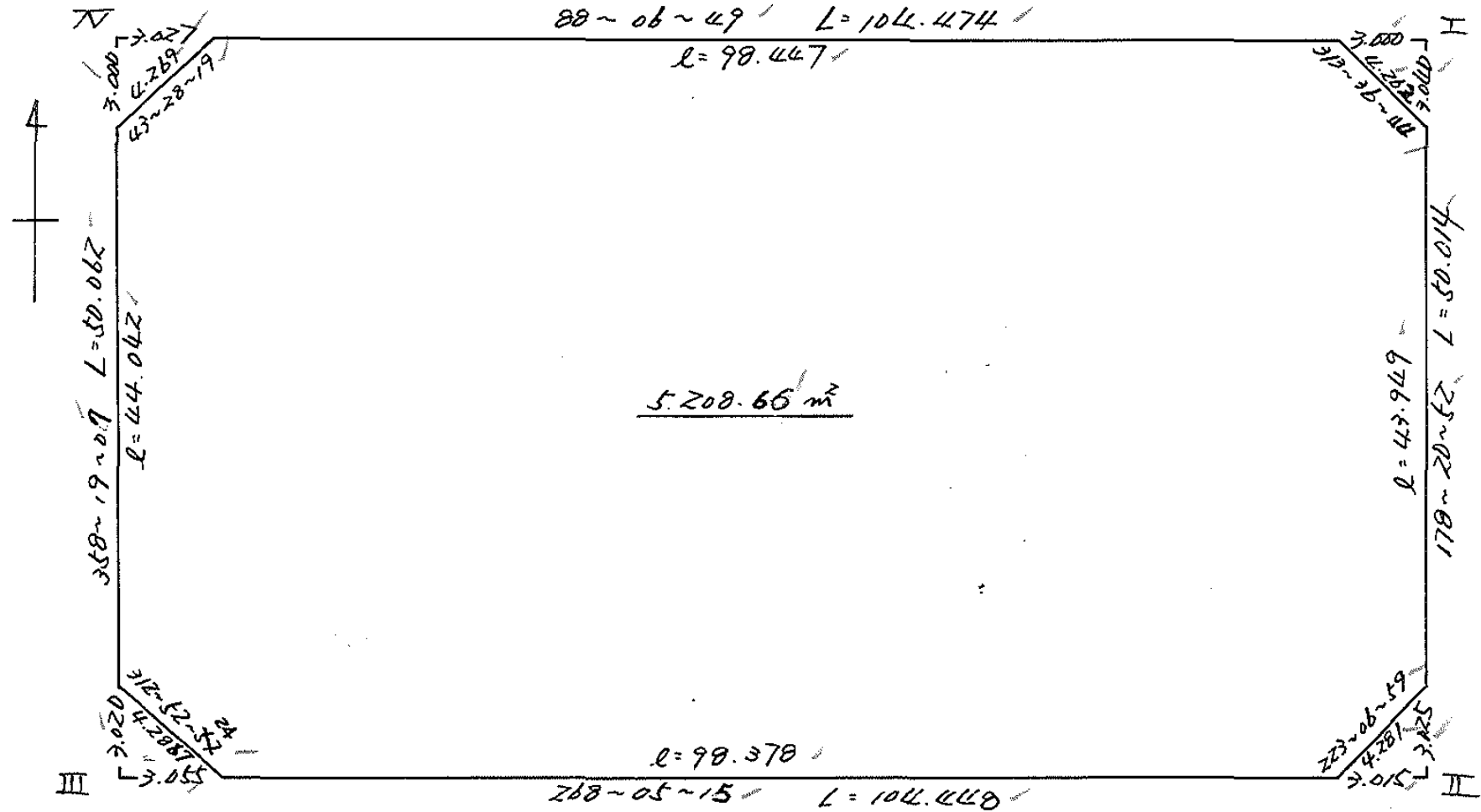
街区略図

工区

ブロック 31

記入者

点検者





# 算 計 地 画

画地略図

工区

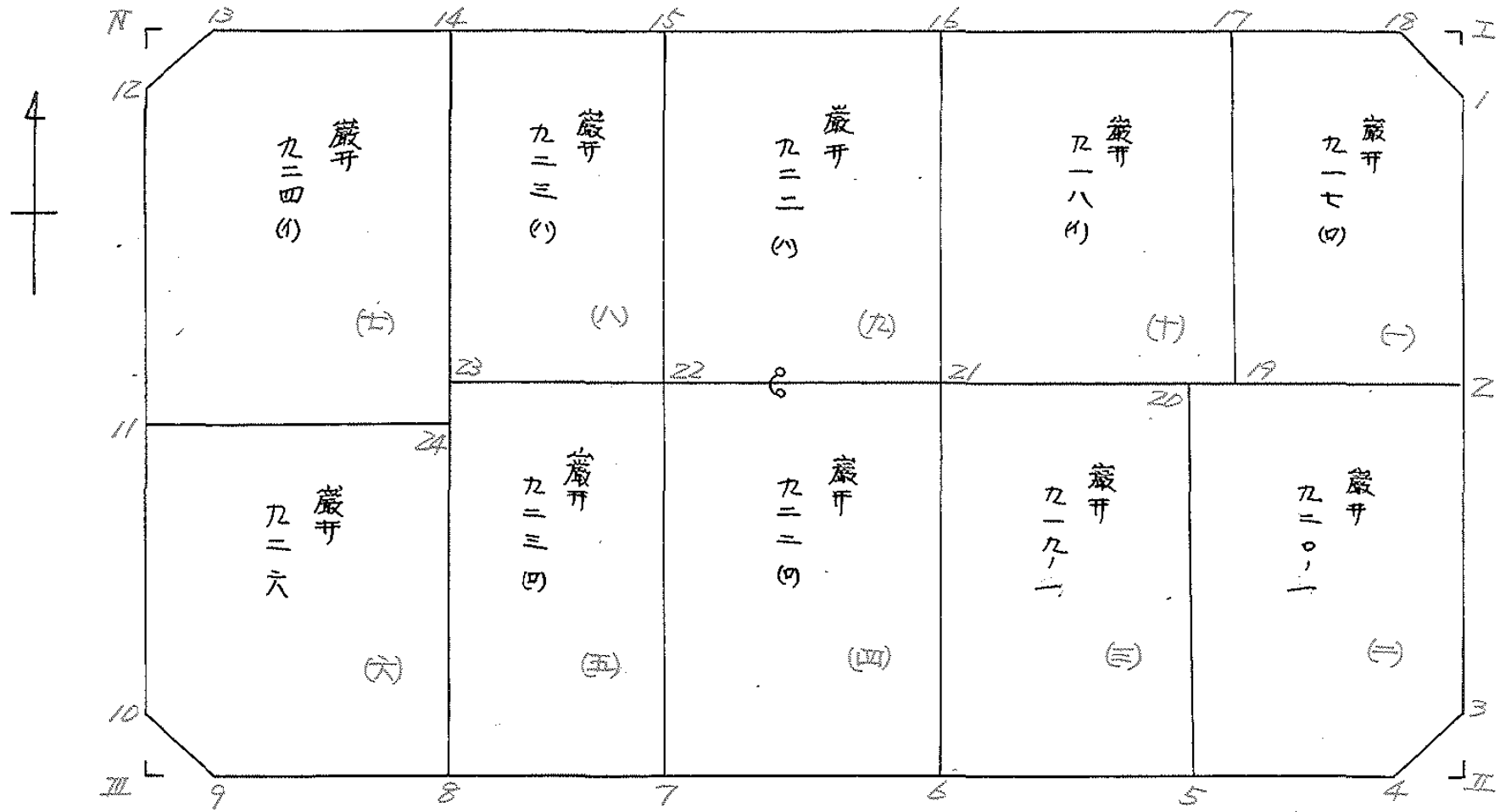
ブロック

31


記入者

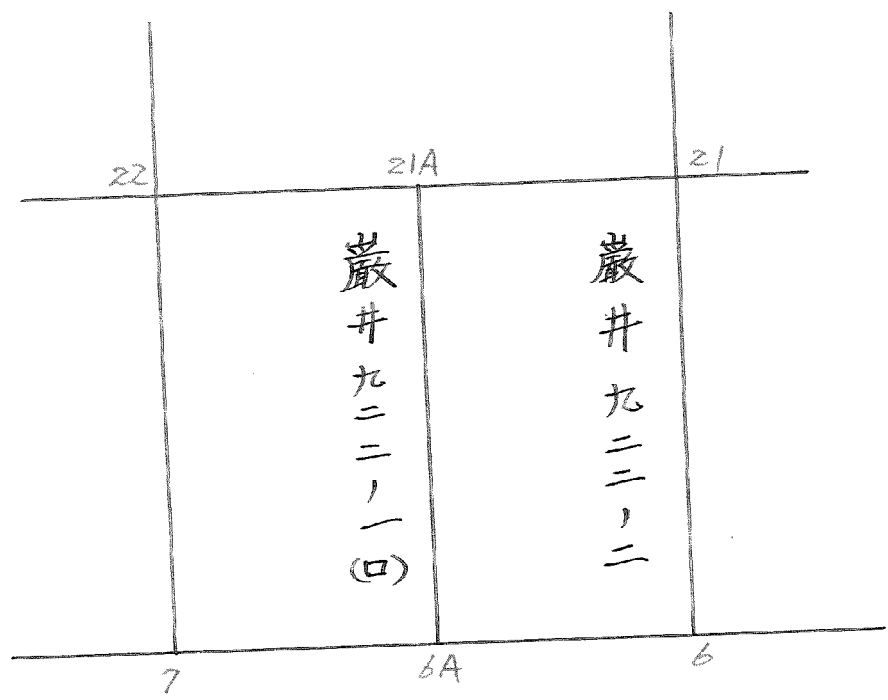


点検者



5.53.4.6

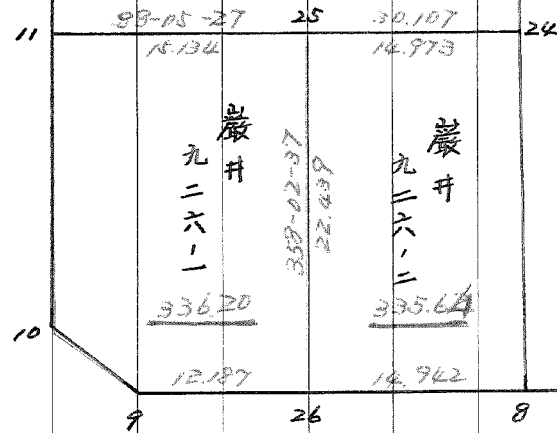
略	図	工区	ブロック	31	記入者		点検者
---	---	----	------	----	-----	---	-----



BNo. 31

(大野炭井)

3/27-7



# 面積計算書

工  
区

フ  
ロ  
ック

W/

計  
算  
者

精  
算  
者



備  
考

1. 畧 井  
2. ' 920-1

917 (D)  
920-1

点	①	②	③	④	⑤	⑥	③ × ⑤		② × ⑥	
	X	X-(定数)	X <sub>n-1</sub> -X <sub>n+1</sub>	Y	Y-(定数)	Y <sub>n-1</sub> -Y <sub>n+1</sub>	+	-	+	-
1	<sup>-148</sup> 562,120	<sup>-128,550</sup> 12,120	+ 24,899	<sup>-39</sup> 909,988	<sup>-37,700</sup> 9,988	- 3,719		248,691,212	45,074,280	
2	584,079	34,079	+ 22,449	909,355	9,355	+ 12,172		210,010,395		482,967,588
19	584,569	34,569	- 24,507	924,160	24,160	+ 15,621	592,089,120			540,002,349
17	559,572	9,572	- 25,389	924,976	24,976	- 11,086	634,115,664		106,115,192	
18	559,180	9,180	+ 2,548	913,074	13,074	- 14,988		60,312,552	137,529,840	
							1,276,204,784	492,014,159	288,779,312	1,022,969,937
							734,190,625			734,190,625
									1/2 = 367,095,312.5	
2	<sup>-148</sup> 584,079	<sup>-148,500</sup> 4,079	+ 21,452	<sup>-39</sup> 909,355	<sup>-37,900</sup> 9,455	- 16,308		200,683,460	66,520,332	
3	606,050	26,050	+ 25,096	908,721	8,721	+ 2,292		218,862,216		59,706,600
4	609,175	29,175	+ 3,544	911,647	11,647	+ 15,497		41,276,968		452,124,975
5	609,594	29,594	- 24,577	924,218	24,218	+ 13,382	595,205,786			696,026,908
20	584,598	4,598	- 25,515	925,029	25,029	- 14,863	638,614,935		68,340,074	
							1,233,820,721	460,822,644	134,860,406	907,858,483
							772,998,077			772,998,077
									1/2 = 386,499,038.5	

# 面積計算書

工  
区

フ  
ロ  
ック

31

計  
算  
者

精  
算  
者

(印)

備  
考

3. 巖井 919-1  
4. " 922 (0)

点	①	②	③	④	⑤	⑥	③ × ⑤		② × ⑥	
	X	X-(定数)	X <sub>n-1</sub> -X <sub>n+1</sub>	Y	Y-(定数)	Y <sub>n-1</sub> -Y <sub>n+1</sub>	+	-	+	-
5	-148 609.594	-148.580 29.594	+ 25.531	-39 924.218	-39.920 4.218	+ 15.183		107.689758		449.325702
6	610.129	30.129	- 24.467	940.212	20.212	+ 16.810	494.527004			506.468490
21	585.127	5.127	- 25.531	941.028	21.028	- 15.183	536.865868		77.843241	
20	584.598	4.598	+ 24.467	925.029	5.029	- 16.810		128.044543	77.292380	
							1031.392872	230.734301	155.135621	955.794192
							800.658571			800.658571
								1/2 = 400.3292855		
<del>6</del>	<del>-148 610.129</del>	<del>-148.580 30.129</del>	<del>+ 25.939</del>	<del>-39 940.212</del>	<del>-39.940 0.212</del>	<del>+ 27.244</del>		5.499068		820.834476
<del>7</del>	<del>611.066</del>	<del>31.066</del>	<del>- 24.074</del>	<del>968.272</del>	<del>28.272</del>	<del>+ 28.879</del>	680.620128			897.155014
<del>22</del>	<del>586.055</del>	<del>6.055</del>	<del>- 25.939</del>	<del>969.091</del>	<del>29.091</del>	<del>- 27.244</del>	754.591449		164.962420	
<del>21</del>	<del>585.127</del>	<del>5.127</del>	<del>+ 24.074</del>	<del>941.028</del>	<del>1.028</del>	<del>- 28.879</del>		24.748072	148.062633	
							1435.21577	30.247140	313.025053	1717.989490
							1404.964437			1404.964437
								1/2 = 702.4822185		



面積計算書

工  
区

ブ  
ロ  
ック

31

計  
算  
者



精  
算  
者

備  
考

巖井 922-2

巖井 922-1 (a)

点	①	②	③	④	⑤	⑥	③ × ⑤		② × ⑥	
	X	X-(定数)	X <sub>n-1</sub> -X <sub>n+1</sub>	Y	Y-(定数)	Y <sub>n-1</sub> -Y <sub>n+1</sub>	+	-	+	-
Z1	-148, 585.127	-148.580- 5.127	+24.538	-39 944.028	-39.940- 1.028	-14.847			25.225064	76.120569
6	610.129	30.129	+25.471	940.212	0.212	+13.214			5.399852	398.124606
6A	610.598	30.598	-24.538	954.242	14.242	+14.847	349.470196			454.288506
Z1A	585.591	5.591	-25.471	955.059	15.059	-13.214	383.567789			73.879474
							733.037985	30.624916	150.000043	852.413112
							702.443069			702.443069
							x/2 = 351.2065345			
							≈ 351.20			
Z1A	-148, 585.591	-148.580- 5.591	+24.543	-39, 955.059	-39.950- 5.059	-14.849			124.163037	83.020759
6A	610.598	30.598	+25.475	954.242	4.242	+13.213			108.064950	404.291374
7	611.066	31.066	-24.543	968.272	18.272	+14.849	448.449696			461.299034
Z2	586.055	6.055	-25.475	969.091	19.091	-13.213	486.343225			80.004715
							934.792921	232.227987	163.025474	865.590408
							702.564934			702.564934
							x/2 = 351.282467			
							≈ 351.28			
(922-101)		702.48	-351.20 =	351.28						

# 面積計算書

工区 \_\_\_\_\_ フロック \_\_\_\_\_ 31 計算者 \_\_\_\_\_ 縮算者 \_\_\_\_\_ 5. 歳井 923 (口) 備考 6 926

点	①	②	③	④	⑤	⑥	③ × ⑤		② × ⑥	
	X	X-(定数)	X <sub>n-1</sub> -X <sub>n+1</sub>	Y	Y-(定数)	Y <sub>n-1</sub> -Y <sub>n+1</sub>	+	-	+	-
7	-148 611.066	-148.580 31.066	+ 25.498	-39 968.272	-39.960 8.272	+ 13.766			210.919456	427.654556
8	611.553	31.553	- 24.528	982.857	22.857	+ 15.406	560.636496			486.105518
23	586.538	6.538	- 25.498	983.678	23.678	- 13.766	603.741644		90.002108	
22	586.055	6.055	+ 24.528	969.091	9.091	- 15.406		222.984048	93.283330	
							1164.378140	433.903504	183.285438	913.760074
							730.474636			730.474636
									1/2 = 365.237318	
8	-148 611.553	-148.580 31.553	+ 23.332	-39 982.857	-39.980 2.857	+ 26.378			66.659524	832.305034
9	612.458	32.458	- 2.012	-40 009.971	29.971	+ 30.256	60.301652			982.049248
10	609.541	29.541	- 22.378	013.113	33.113	+ 3.712	739.380177			109.656192
11	590.129	10.129	- 20.415	013.683	33.683	- 29.520	687.638445		289.008080	
24	589.126	9.126	+ 21.424	-39 983.593	3.593	- 30.826		76.976432	281.318076	
							1487.220274	143.635956	580.326156	1924.010474
							1343.684318			1343.684318
									1/2 = 671.842157	

# 面積計算書

工区 大野巖井

ブロック

31

計算者

精算者

備考

926-1  
926-2

点	①	②	③	④	⑤	⑥	③ × ⑤		② × ⑥	
	X	X-(定数)	X <sub>n-1</sub> -X <sub>n+1</sub>	Y	Y-(定数)	Y <sub>n-1</sub> -Y <sub>n+1</sub>	+	-	+	-
	-148	-148.580		-40	-37.970					
11	590.129	10.129	- 18.916	013.683	23.683	- 14.556	471.670628		147.437724	
25	589.625	9.625	+ 21.922	998.557	8.557	- 15.892		127.586554	12.960500	
26	612.051	32.051	+ 22.833	997.791	7.791	+ 11.414		177.891903		365.830114
9	612.458	32.458	- 2.510	009.971	19.971	+ 15.322	40.127210			497.321476
10	609.541	29.541	- 22.329	013.113	23.113	+ 3.712	416.090177			109.656192
							1037.822015	365.478457	300.398224	972.807782
							672.409558			672.409558
								1/2 = 336.2047791		
	-148	-148.580		-37	-37.980					
25	589.625	9.625	- 22.925	998.557	12.557	- 14.198	425.419225		136.655750	
24	589.126	9.126	+ 21.928	983.593	3.593	- 15.700		72.787304	143.278200	
8	611.553	31.553	+ 22.925	982.857	2.857	+ 14.198		65.496725		447.989414
26	612.051	32.051	- 21.928	997.791	17.791	+ 15.700	390.121048			503.200700
							815.540273	104.284029	279.933950	951.190194
							671.256244			671.256244
								1/2 = 335.628122		
								点検のため。		
										671.80 - 336.20 = 335.64

# 面積計算書

工  
区

フ  
ロ  
ツ  
ク

31

計  
算  
者



精  
算  
者



備  
考

7 番井 924(ハ)  
8. 7 923(ハ)

点	①	②	③	④	⑤	⑥	③ × ⑤		② × ⑥	
	X	X-(定数)	X <sub>n-1</sub> -X <sub>n+1</sub>	Y	Y-(定数)	Y <sub>n-1</sub> -Y <sub>n+1</sub>	+	-	+	-
11	<sup>-148</sup> 590.129	<sup>-148.560</sup> 30.129	-23.608	<sup>-40</sup> 013.683	<sup>-39.980</sup> 33.683	+ 30.812	795.188266			928.334748
12	565.518	5.518	-27.709	014.405	34.405	- 2.215	953.328145		12.222370	
13	562.420	2.420	- 3.986	011.468	31.468	-29.906	125.431448		72.372520	
14	561.532	1.532	+26.706	<sup>-38</sup> 984.499	4.499	-21.875		120.150294	62704500	
24	589.126	29.126	+28.597	983.593	3593	+29.184		102.749021		859.013184
							1873.947857	222.899315	127.299390	1778.342932
							1651.048542			1651.048542
								1/2 = 825.524271		
14	<sup>-148</sup> 561.532	<sup>-148.560</sup> 1.532	-25.486	<sup>-38</sup> 984.499	<sup>-38.960</sup> 24.499	-13.769	624.381514		21.094108	
15	561.052	1.052	+24.523	969.909	9.909	-15.408		242.998409	16.209216	
22	586.055	26.055	+25.486	969.091	9.091	+13.769		231.693226		358.751296
23	586.538	26.538	-24.523	983.678	23.678	+15.408	580.655594			408.897504
							1205.037108	474.691633	37.303324	767.648799
							730.345475			730.345475
								1/2 = 365.1727375		

# 面積計算書

工  
区

ブ  
ロ  
ック

計  
算  
者

精  
算  
者

備  
考

9 葦井 922 (ハ)  
10 918 (キ)

点	①	②	③	④	⑤	⑥	③ × ⑤		② × ⑥	
	X	X-(定数)	X <sub>n-1</sub> -X <sub>n+1</sub>	Y	Y-(定数)	Y <sub>n-1</sub> -Y <sub>n+1</sub>	+	-	+	-
15	-148,561.052	<del>1.052</del>	-25.928	-39,969.909	<del>29.909</del>	-27.247	775,480,552		28,663,844	
16	560.127	0.127	+24.075	941.844	1.844	-28.881		44,394,300	3,667,887	
21	585.127	25.127	+25.928	941.028	1.028	+27.247		26,653,984		684,635,369
22	586.055	26.055	-24.075	969.091	29.091	+28.881	700,365,825			752,492,455
							1475,846,377	71,048,284	32,331,731	1437,129,824
							1404,798,093			1404,798,093
								X/2 = 702,399,046		
16	<del>-148,560.127</del>	<del>10.127</del>	-25.555	<del>-39,941,844</del>	<del>21.844</del>	-16.052	558,223,420		162,558,604	
17	559.572	9.572	+24.442	924.976	4.976	-17.684		121,623,392	169,271,248	
19	584.569	34.569	+25.555	924.160	4.160	+16.052		106,308,800		554,901,528
21	585.127	35.127	-24.442	941.028	21.028	+17.684	513,966,376			621,185,868
							1072,189,796	227,932,192	331,829,852	1176,087,456
							844,257,604			844,257,604
								X/2 = 422,128,802		

# 面積計算書

工区

ブロック

3/

計算者

精算者

備考

スミキリ  
スミキリ

I  
II

点	①	②	③	④	⑤	⑥	③ × ⑤		② × ⑥	
	X	X-(定数)	X <sub>n-1</sub> -X <sub>n+1</sub>	Y	Y-(定数)	Y <sub>n-1</sub> -Y <sub>n+1</sub>	+	-	+	-
I	<sup>-148</sup> 557.081	<sup>-148.550</sup> 9.081	+ 2.940	<sup>-37</sup> 910.076	<sup>-37.900</sup> 10.076	- 3.086			29.523440	28,023966
1	562.120	12.120	+ 0.099	909.988	9.988	+ 2.998			0.988812	36.335760
18	559.180	9.180	- 3.039	913.074	13.074	+ 0.088	29.731886			0.807840
							29.731886	30.612252	28,023966	37.143600
							9.119624			9.119624
									1/2=4.559817	
									≒ 4.56	
3	<sup>-148</sup> 606.050	<sup>-148.600</sup> 6.050	- 0.101	<sup>-37</sup> 908.721	<sup>-37.900</sup> 8.721	- 3.013	0.880821			18,228650
II	609.074	9.074	+ 3.125	908.624	8.624	+ 2.926			26.981250	26.550524
44	609.175	9.175	- 3.024	911.647	11.647	+ 0.087	25.220528			0.798225
							26.101249	26.981250	18,228650	27.348749
							9.120099			9.120099
									1/2=4.5600495	
									≒ 4.56	

# 面積計算書

工  
区

ブ  
ロ  
ック

3/

計  
算  
者

精  
算  
者



備  
考

スミキリ  
スミキリ

Ⅱ  
Ⅳ

点	①	②	③	④	⑤	⑥	③ × ⑤		② × ⑥	
	X	X-(定数)	X <sub>n-1</sub> -X <sub>n+1</sub>	Y	Y-(定数)	Y <sub>n-1</sub> -Y <sub>n+1</sub>	+	-	+	-
9	<sup>-148.</sup> 612.458	<sup>-148.600</sup> 12.458	+ 3.019	<sup>-49</sup> 009.971	<sup>-40.000</sup> 9.971	- 0.089		30,102,449	1,108,762	
Ⅱ	612.560	12.560	- 2.917	013.024	13.024	+ 3.142	37,991,008			39,463,520
10	609.541	9.541	- 0.102	013.113	13.113	- 3.053	1,337,526		29,128,673	
							39,328,534	30,102,449	30,237,435	39,463,520
							9,226,085			9,226,085
									1/2 = 4,613,042.5	
									≒ 4.61	
12	<sup>-148.</sup> 565.518	<sup>-148.560</sup> 5.518	+ 0.100	<sup>-40</sup> 014.405	<sup>-40.010</sup> 4.405	+ 3.025		044,0500		16,691,950
Ⅳ	562.520	2.520	- 3.098	014.493	4.493	- 2.937	13,919,314		7,401,240	
13	562.420	2.420	+ 2.998	011.468	1.468	- 0.088		4,401,064	0,212,960	
							13,919,314	4,841,564	7,614,200	16,691,950
							9,077,750			9,077,750
									1/2 = 4,528,875	
									≒ 4.54	

計年	50	計		檢	
月	8	算		查	
算日	26	者		者	

B. NO. 31

各筆面積計算書

地番	算式	隅切	地積	摘要
1	巖井 917 (0)		367 09	
2	" 920 -1		386 49	
3	" 919 -1		400 32	
4	" 922 (0)		702 48	
5	" 923 (0)		365 23	
6	" 926		671 84	926-1 336.20 926-2 335.6/2
7	" 924 (A)		825 52	
8	" 923 (V)		365 17	
9	" 922 (A)		702 39	
10	" 918 (A)		422 12	
		合計	5,208 65	……空地面積
		全	5,208 66	
		差	-0.01	

筆