

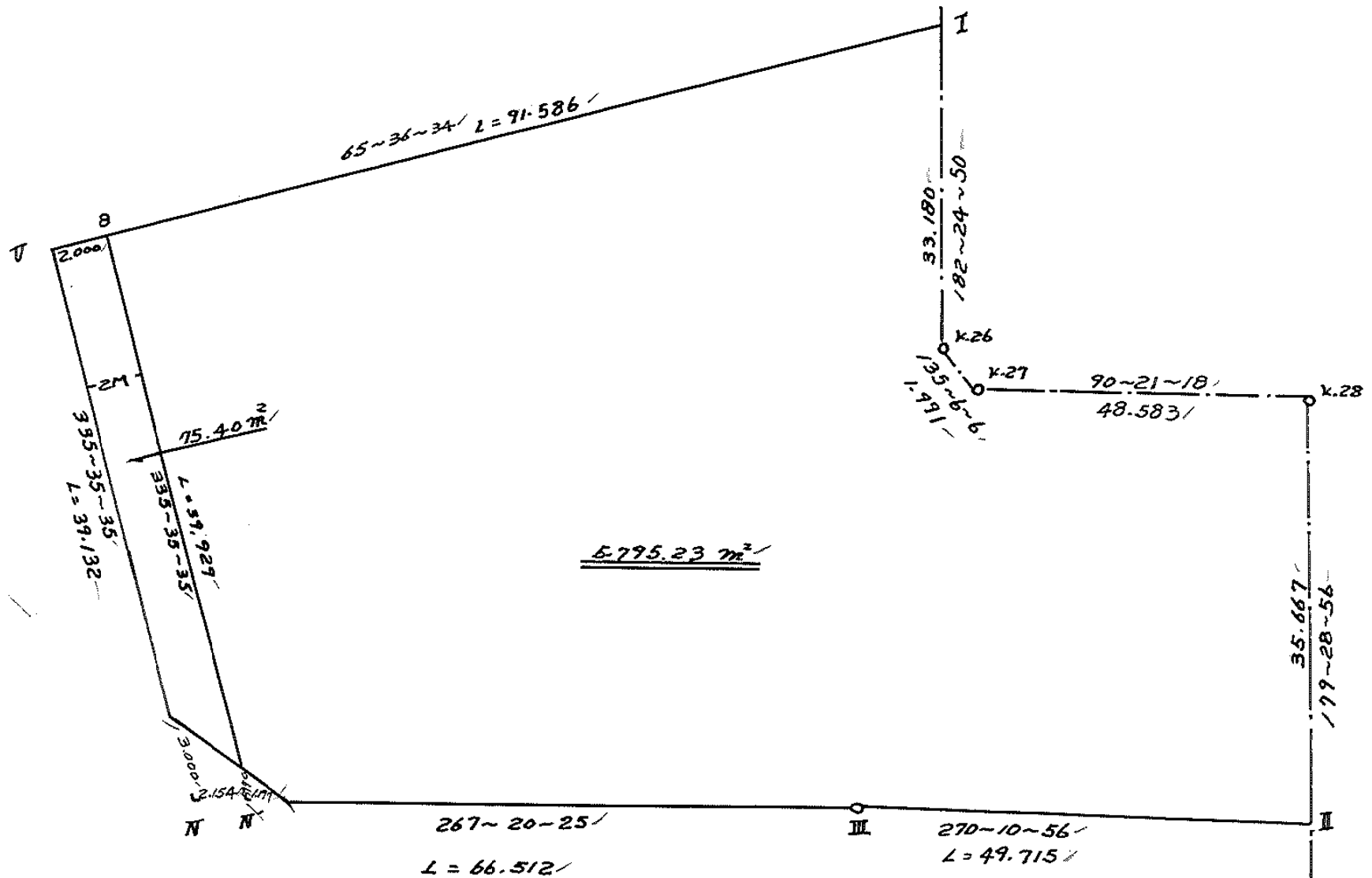
街区略図

工区

ブロック

記入者

点検者



# 面積計算書

工  
区

ブ  
ロ  
ック

46

計  
算  
者

精  
算  
者



備  
考

全 体

点	①	②	③	④	⑤	⑥	③	×	⑤	②	×	⑥		
	X	X-(定数)	X <sub>n-1</sub> -X <sub>n+1</sub>	Y	Y-(定数)	Y <sub>n-1</sub> -Y <sub>n+1</sub>	+		-	+		-		
I	-148 761.358	148.760 - 1.358	- 4.670	-39 583.703	39.530 - 53.703	- 82.015	250.793	0.0		111.376	370			
K.26	794.509	-34.509	+34.561	585.101	-55.101	- 0.007			1904.345	661	0.241	563		
K.27	795.919	-35.919	+ 1.711	583.696	- 53.696	- 49.987			91.873	856	1795.483	053		
K.28	796.220	-36.220	+35.966	535.114	- 5.114	- 48.905			183.930	124	1771.339	100		
II	831.885	- 71.885	+ 35.507	534.791	- 4.791	+ 49.392			170.114	037		3550.543	920	
III	831.727	- 71.727	+ 2.928	584.506	- 54.506	+ 116.155			159.593	568		8331.449	685	
IV	834.813	- 74.813	- 32.548	650.946	- 120.946	+ 82.610	3936.550	408				6180.301	930	
V	799.179	- 39.179	- 73.455	667.116	- 137.116	- 67.243	10071.855	780				2634.513	497	
							14259.199	198	2509.857	246	6312.953	583	18062.295	535
							11749.341	952				11749.341	952	
							1/2 = 5874.670976							
				5874.67	75.40	4.04	= <del>794.60</del>							
							5795.23							

# 地 計 算

画地略図

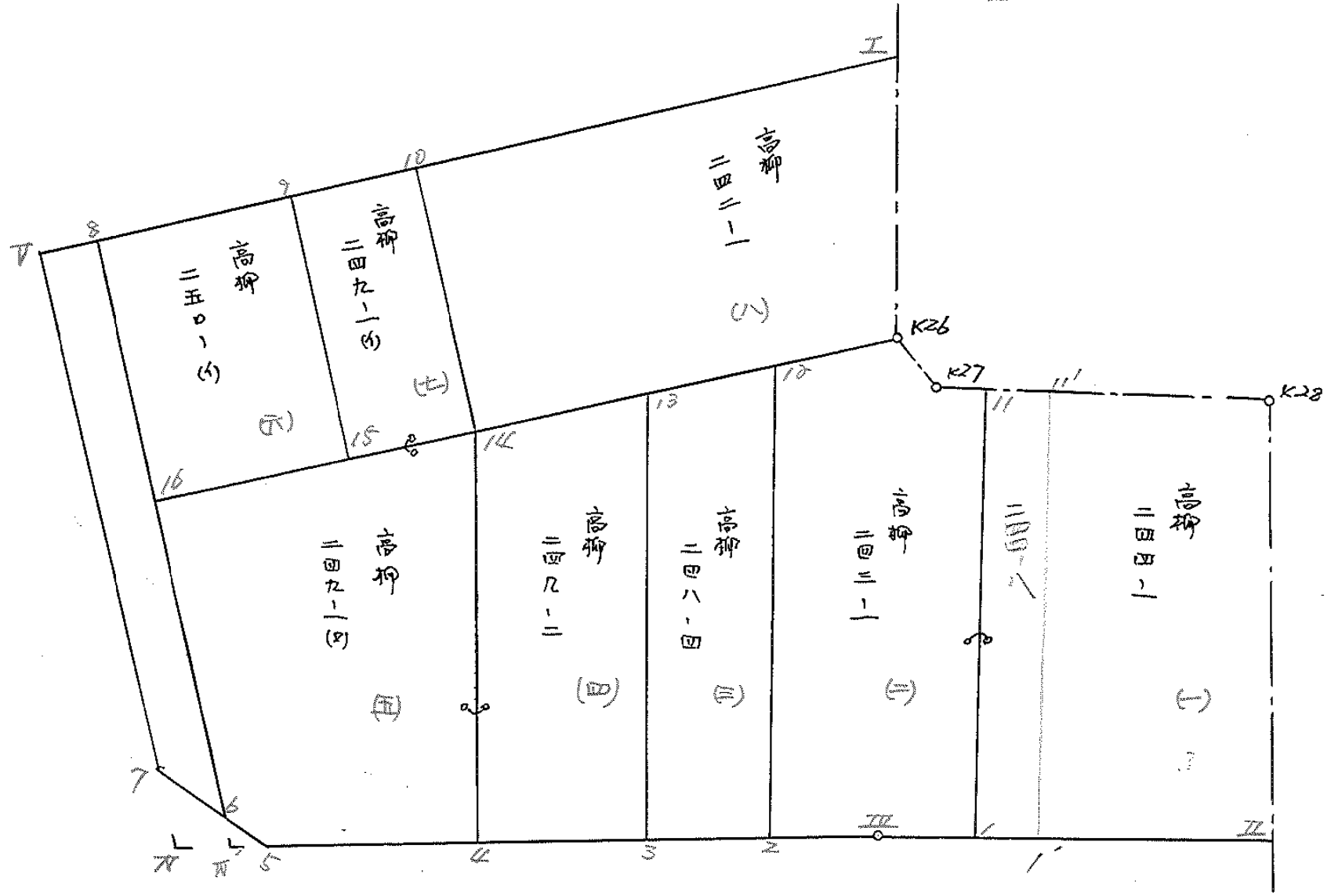
工区

ブロック

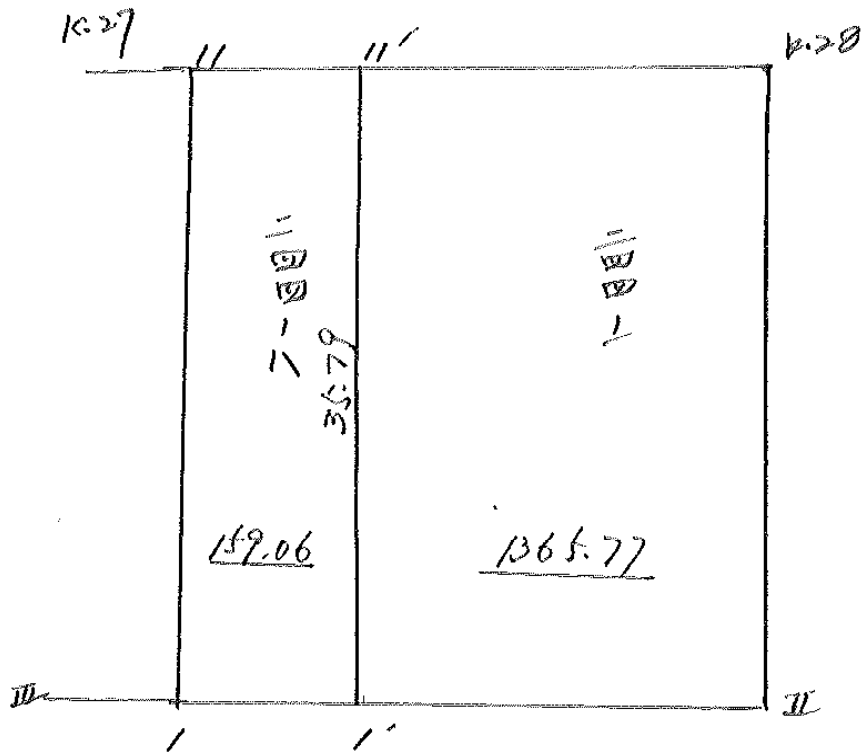
46

記入者

点検者



B.No. 46. 分割



# 面積計算書

工区

ブロック

46

計算者

精算者



備考

高柳 (一) 244-1

高柳 (二) 243-1

点	①	②	③	④	⑤	⑥	③ × ⑤		② × ⑥	
	X	X-(定数)	X <sub>n-1</sub> -X <sub>n+1</sub>	Y	Y-(定数)	Y <sub>n-1</sub> -Y <sub>n+1</sub>	+	-	+	-
K.28	796.220 <sup>-148.</sup>	6.220 <sup>-148.790</sup>	+35.931	535.114 <sup>-39.</sup>	5.114 <sup>-39.530</sup>	-43.227			183.751134	268.871940
II	831.885	41.885	+35.530	534.791	4.791	+42.132			170.224230	1764.688820
I	831.750	41.750	-35.931	577.246	47.246	+43.227	1897.596026			1804.727250
II	795.954	5.954	-35.530	578.018	48.018	-42.132	1706.079540			250.853928
							3403.675611	353.975364	519.725868	3569.426070
							3049.700202			3049.700202
									1/2=1524.850101	
II	795.954 <sup>-148.</sup>	5.954 <sup>-148.790</sup>	+35.831	578.018 <sup>-39.</sup>	8.018 <sup>-39.570</sup>	-6.450			287.292958	38.403300
I	831.750	41.750	+35.773	577.246	7.246	+6.488	259.21158			270.874000
III	831.727	41.727	+0.708	584.506	14.506	+23.004			10.270248	959.887908
Z	832.458	42.458	-32.573	600.250	30.250	+16.504	985.333250			700.726832
12	799.154	9.154	-37.949	601.010	31.010	-15.149	1176.798490			138.673946
K.26	796.509	4.509	-3.235	595.101	15.101	-17.314	48.851735			78.068826
K.27	795.919	5.919	+1.445	583.696	13.696	-7.083			19.790720	41.924277
							2210.983475	576.565084	299.070249	1931.488740
							1634.418391			1634.418391
									1/2=817.2091955	

# 面積計算書

工区

ブロック

46

計算者



精算者

備考

高柳 264-1  
" 264-8

点	①	②	③	④	⑤	⑥	③ × ⑤		② × ⑥	
	X	X-(定数)	X <sub>n-1</sub> -X <sub>n+1</sub>	Y	Y-(定数)	Y <sub>n-1</sub> -Y <sub>n+1</sub>	+	-	+	-
k>8	-103, 796.220	-103,790- 6.220-	+ 35.903-	-39,535.114	-39,530- 5.114-	- 38.777-			183.607942	241.192940
II	831.885	41.885+	35.544	534.791	4.791+	37.692-			170.291304	1579.729020
I'	831.764	41.764-	35.903	572.806	42.806+	39.777-	1536.863918			1667.482628
II'	795.982	5.982-	35.544	573.568	43.568-	37.692-	1549.580992			225.473544
							3085.400912	353.899246	466.666484	3178.212068
							2731.545564			2731.545564
							x <sub>1/2</sub> = 1365.772782-			
II'	-103, 795.982	-103,790- 5.982-	+ 35.810	-39, 573.568	-39,570- 3.568-	- 5.212-			127.770080	31.178184
I'	831.764	41.764-	35.768	572.806	2.806+	3.678-			100.365008	153.607992
I	831.750	41.750-	35.810	577.246	7.246+	5.212-	259.479260			217.601000
II	795.854	5.854-	35.768	578.018	8.018-	3.678-	226.787824			21.898812
							146.267084	220.135088	153.076870	371.208992
							318.131996			318.131996
							x <sub>1/2</sub> = 159.065998			

面積計算書		工区	ブロック	46	計算者	図章	縮尺者	備考	高柳 (三) 248-11	高柳 (四) 249-2
点	①	②	③	④	⑤	⑥	③ × ⑤	② × ⑥	+	-
	X	X - (定数)	X <sub>n-1</sub> - X <sub>n+1</sub>	Y	Y - (定数)	Y <sub>n-1</sub> - Y <sub>n+1</sub>	+	-	+	-
	-148,	-148,790		-39,	-39,600					
12	799.154	9.154	+ 29.411	601.010	1.010	- 14.097		29,705,110	129,043,938	
2	832.458	42.458	+ 33.928	600.250	0.250	+ 12.656		8,482,000		537,348,448
3	833.082	43.082	- 29.411	613.666	13.666	+ 14.097	401,930,726			607,326,954
13	803.047	13.047	- 33.928	614.347	14.347	- 12.656	486,765,016		165,122,832	
							888,695,742	38,187,110	294,166,770	1144,675,402
							850,508,632			850,508,632
									1/2 = 425,254,316	
	-148,	-148,800		-39,	-39,610					
13	803.047	3.047	+ 24.623	614.347	4.347	- 19.218		107,026,181	58,557,246	
3	833.082	33.082	+ 30.901	613.666	3.666	+ 17.959		113,283,066		594,119,638
4	833.948	33.948	- 24.623	632.306	22.306	+ 19.218	549,240,638			652,412,664
14	808.459	8.459	- 30.901	632.884	22.884	- 17.959	707,138,484		151,915,181	
							1256,379,122	220,319,247	210,472,427	1246,532,302
							1036,059,875			1036,059,875
									1/2 = 518,029,937.5	



# 面積計算書

工  
区

フ  
ロ  
ック

46

計  
算  
者

精  
算  
者



備  
考

高柳

(五) 249-1(0)

高

(六) 250-41

点	①	②	③	④	⑤	⑥	③ × ⑤		② × ⑥	
	X	X-(定数)	X <sub>n-1</sub> -X <sub>n+1</sub>	Y	Y-(定数)	Y <sub>n-1</sub> -Y <sub>n+1</sub>	+	-	+	-
14	-148,800.459	8.459	+ 18.216	-39.632884	2.884	- 25.147		52.823344	212.718473	
4	833.948	33.948	+ 26.199	632.306	2.306	+ 14.715		60.414874		499544820
5	834.658	34.658	+ 0.159	647.599	17.599	+ 16.764		2.798241		581.006712
6	834.107	34.107	- 19.026	649.070	19.070	+ 9.854	362.825820			336.090378
16	815.632	15.632	- 25.648	657.453	27.453	- 16.186	704.114544		253.019552	
							1066.940364	116.036479	465.738025	1416.641910
							950.903885			950.903885
								x <sub>2</sub> <sup>y</sup> = 475.4519425		
9	-148,792.430	2.430	+ 13.219	-39.652.231	12.231	- 21.748		161.681589	52.847640	
15	811.572	21.572	+ 23.202	643.546	3.546	+ 5.222		82.274292		112.648984
16	815.632	25.632	- 13.219	657.453	17.453	+ 21.748	230.711207			557.444736
8	798.353	8.353	- 23.202	665.294	25.294	- 5.222	586.871389		43.619366	
							817.582595	243.955881	96.467006	670.093720
							573.626714			573.626714
								x <sub>2</sub> <sup>y</sup> = 286.813057		

# 面積計算書

工区

ブロック

46

計算者

豊住

精算者

高柳

備考

(七)高柳 247-1(4)

(11)高柳 242-1

点	①	②	③	④	⑤	⑥	③	×	⑤	②	×	⑥
	X	X-(定数)	X <sub>n-1</sub> -X <sub>n+1</sub>	Y	Y-(定数)	Y <sub>n-1</sub> -Y <sub>n+1</sub>	+		-	+		-
10	-148,787.886	-148.780 7.886	+16.029	39.612.211	-39.630 12.211	-19.347			195.730119			152.570442
14	808.459	28.459	+23.686	632.884	2.884	+1.335			68.210427			37.992765
15	811.572	31.572	-16.029	643.546	13.546	+19.347			717.128334			610.823484
9	792.430	12.430	-23.686	652.231	22.231	-1.335			526.563466			16.594050
									742.692300			264.040543
									159.164497			648.816249
									479.651757			479.651757
									$X\frac{1}{2} = 239.8258785$			
I	-148,761.358	-148.760 1.358	+6.623	39,583703	-39.580 3.703	-57.110			24.524969			77.555380
K.26	794.509	34.509	+47.101	585.101	5.101	+49.181			240.262201			1697.187129
14	808.459	48.459	-6.623	632.884	62.884	+57.110			350.250732			2767.493490
10	787.886	27.886	-47.101	642.211	62.211	-49.181			2930.200311			1271.461366
									3280.151043			264.737170
									1449.016746			4464.680619
									305.663873			305.663873
									$X\frac{1}{2} = 1507.8319365$			

# 面積計算書

工区

ブロック

46

計算者

精算者



備考

水路  
陽切 IV

点	①	②	③	④	⑤	⑥	③ × ⑤		② × ⑥	
	X	X-(定数)	X <sub>n-1</sub> -X <sub>n+1</sub>	Y	Y-(定数)	Y <sub>n-1</sub> -Y <sub>n+1</sub>	+	-	+	-
8	-148,798.353	-48,798. - 0.353	+ 34.728	-39,665.294	-39,640. - 25,294	18.046 -		883,468,832	-6,370,238 -	
6	834.107	36.107	+ 33.728	649.070	9.070	- 13.108 -		305,912,960	473,290,556	
7	832.081	34.081	- 34.928	652.186	12.186	+ 18.046 -	425,632,608 -			615,025,726
V	799.179	1.179	- 33.728	667.116	27.116	+ 13.108 -	914,568,448 -			15,454,332
							1,540,201,056	1189,381,792	479,660,794	630,480,058
							150,819,264			150,819,264
								X <sub>2</sub> = 75,409,632		
5	-148,834.658	-148,830. - 4.658	+ 0.706	-39,647.599	-39,640. - 7.599	11.876 -		5,364,894 -		8,738,408 -
IV	834.813	4.813	- 2.577	650.946	10.946	+ 4.587 -	28,207,842 -			22,077,231 -
7	832.081	2.081	- 0.706	652.186	12.186	- 1.876 -	8,603,316 -		3,903,956 -	
6	834.107	4.107	+ 2.577	649.070	9.070	- 4.587 -		23,373,390	18,838,809 -	
							36,811,158	28,738,284	22,742,765	30,815,639
							8,072,874			8,072,874
								X <sub>2</sub> = 4,036,437		

計年 月 算日	計算者	検査者
---------------	-----	-----

B. NO. 46

各筆面積計算書

地番	算式	隅切	地積	摘要
1	高柳 244-1	分割	1,524.83	244-1...1365.77 244-2...159.06
2	" 243-1		817.20	
3	" 248-4		425.25	
4	" 249-2		518.02	
5	" 249-1(1)		475.45	
6	" 250(1)		286.81	
7	" 249-1(1)		239.82	
8	" 242-1		1,507.83	
		合計	5,795.21	...宅地9筆
		全体	5,795.23	
		差	-0.02	
	水路路線2M		75.00	