

街区略図

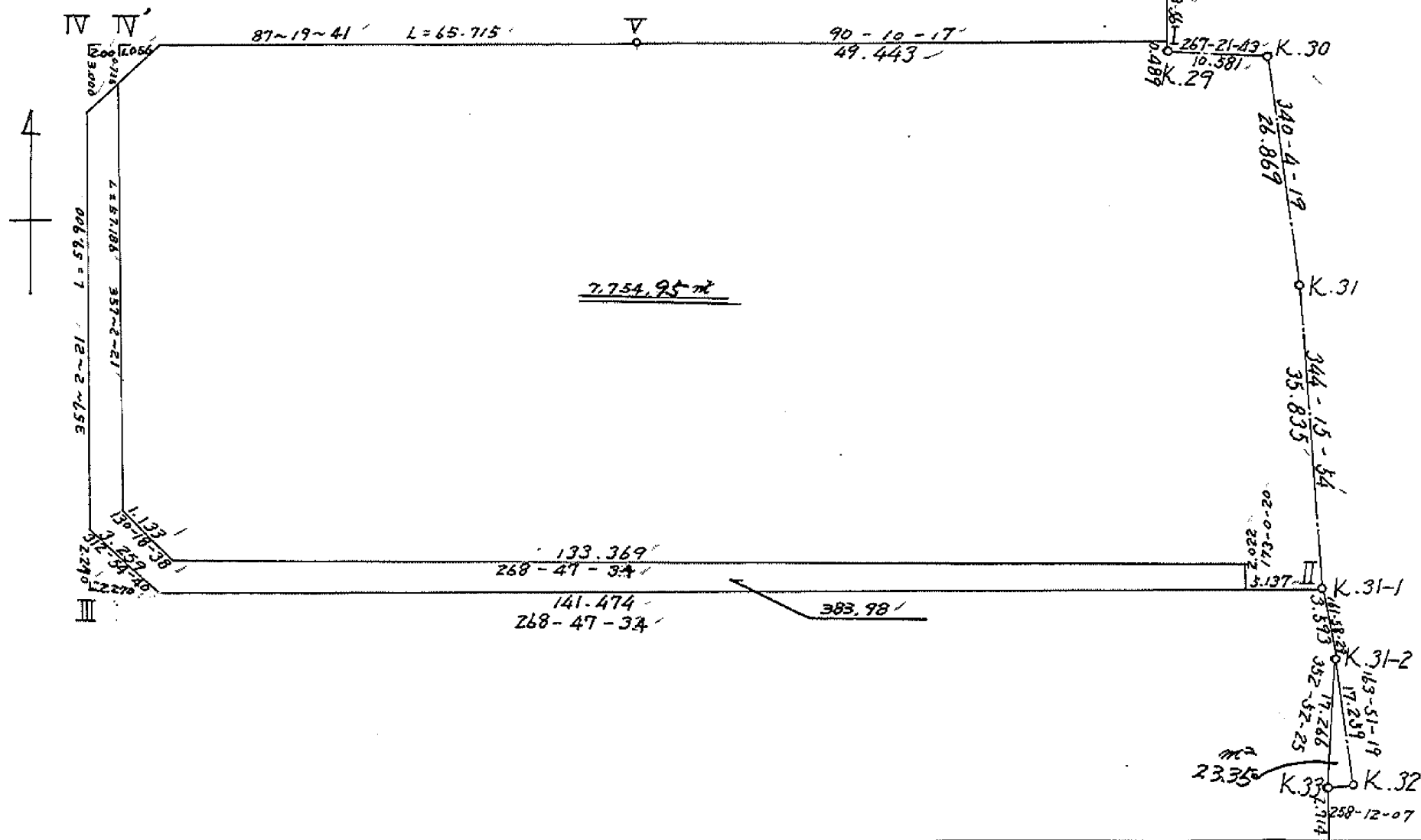
工区

ブロック

47

記入者

点検者



# 面積計算書

工区

ブロック

47

計算者

測算者

備考

合係

点	①	②	③	④	⑤	⑥	③ × ⑤		② × ⑥	
	X	X-(定数)	X <sub>n-1</sub> -X <sub>n+1</sub>	Y	Y-(定数)	Y <sub>n-1</sub> -Y <sub>n+1</sub>	+	-	+	-
	-148.	-148.830.0		-39.	-39.600.0					
I	827.896	7.896	+0.637	534.737	34.737	-49.447			22.127469	390.433512
K.29	838.325	2.325	+0.002	534.733	34.733	-10.574			0.069466	83.662990
K.30	837.898	7.898	+24.773	524.163	24.163	-19.728			598.589999	165.811724
K.31	863.158	33.158	+59.752	515.005	15.005	-18.876			396.578760	625.890408
K.31-1	897.650	67.650	+37.473	505.227	5.227	+131.725			198.119751	8911.196250
II	900.631	70.631	-56.839	646.730	146.730	+144.537	3339.926490			10208.792207
III	840.811	10.811	-62.883	647.224	149.224	-62.550	9421.322592			676.228050
IV	837.748	7.748	-2.915	524.120	24.120	-115.087	245.384700			891.694076
							18006.753762	1716.085445	2828.720780	19119.989097
							16291.268317			16291.268317
										$\bar{Y} = 8145.634158$
										$= 8145.63$
				水取	陽田					
										$8145.63 - (383.98 + 2.58 + 4.12) = 7754.95$
										390.68

# 画地計算

街区略図

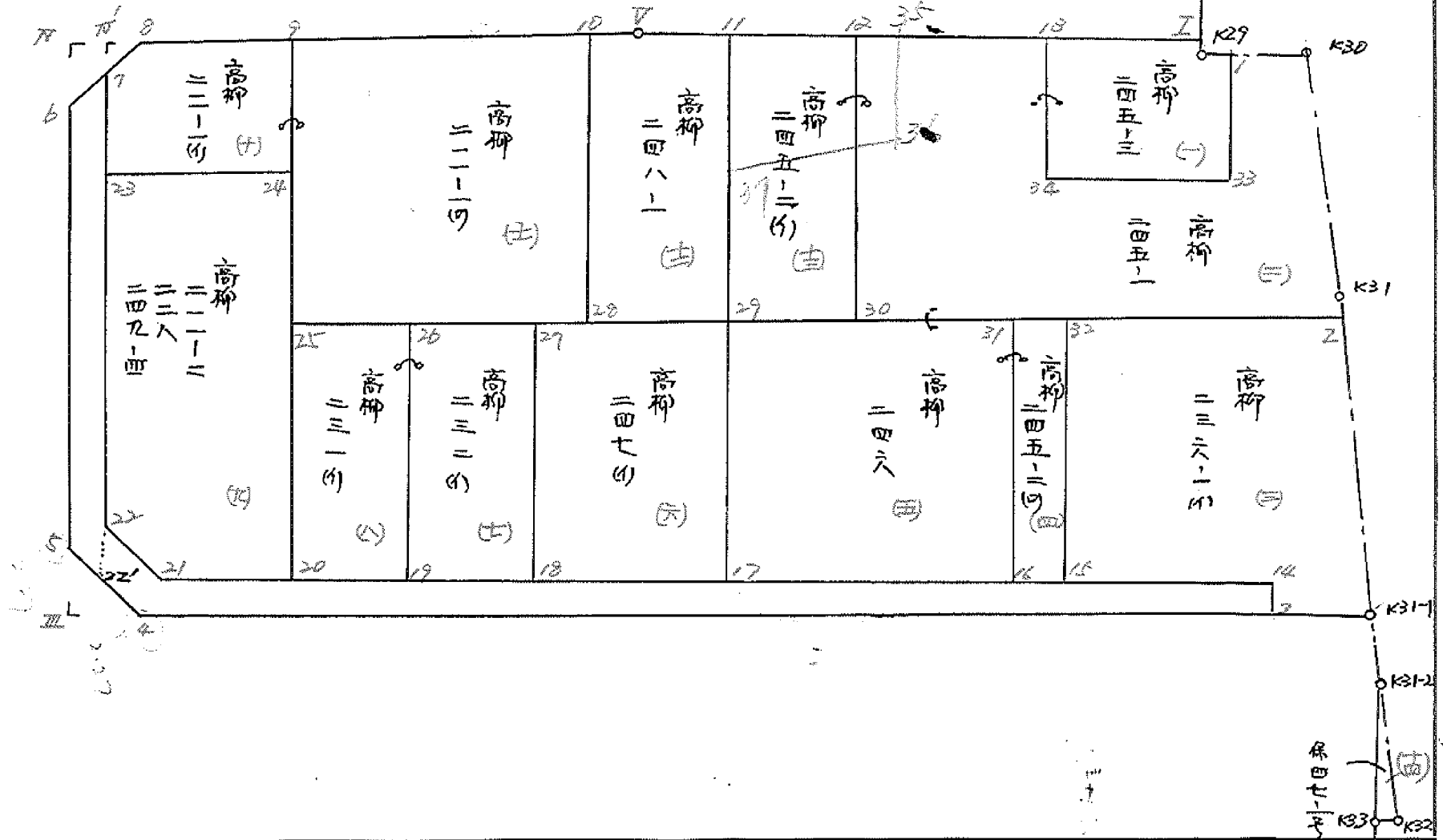
工区

ブロック

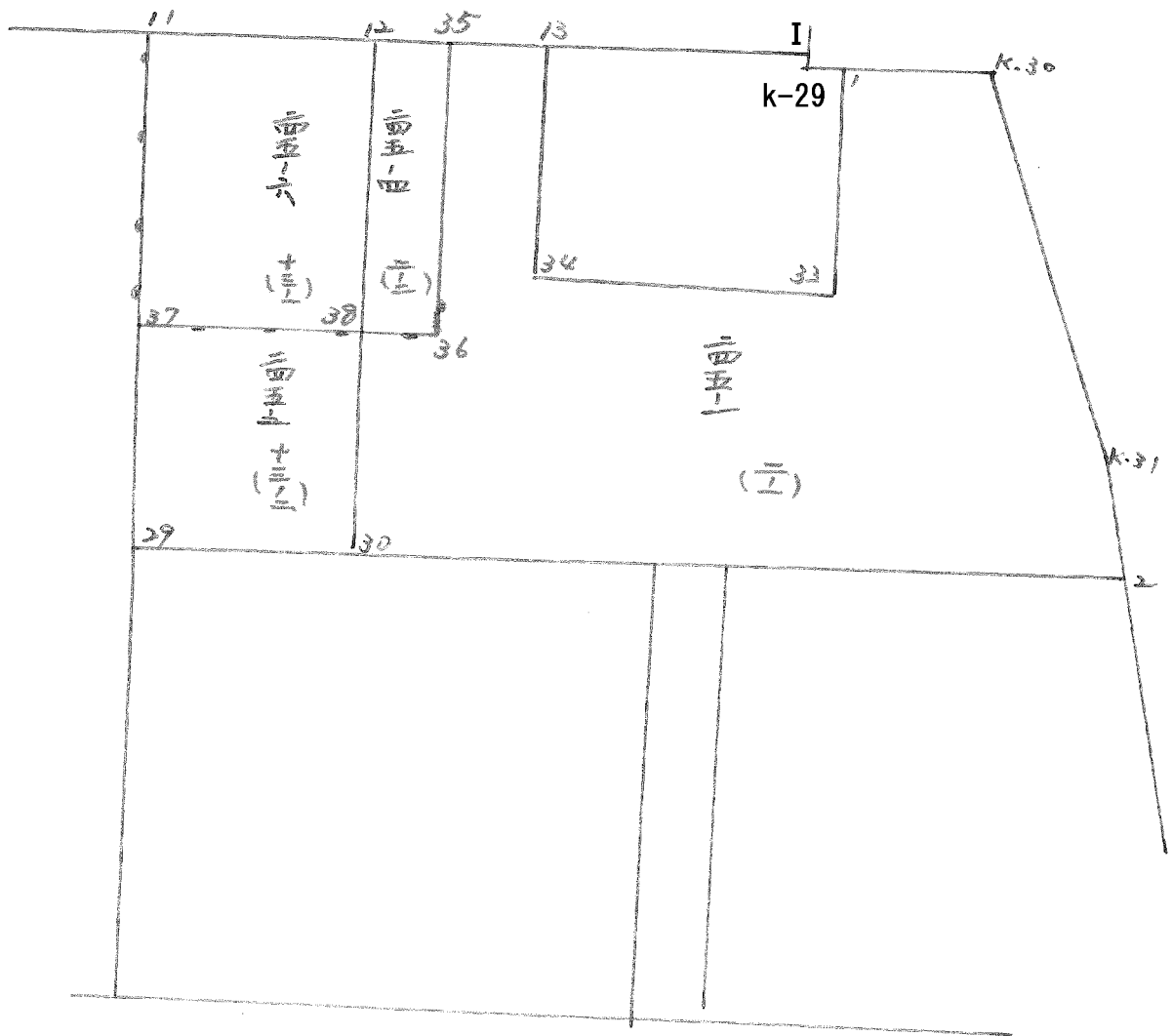
47

記入者

点検者



BNO. 47 分割計算



# 面積計算書

工  
区

ブ  
ロ  
ック

47

計  
算  
者




精  
算  
者

備  
考

高柳 245-3 11

点	①	②	③	④	⑤	⑥	③ × ⑤		② × ⑥	
	X	X-(定数)	X <sub>n-1</sub> -X <sub>n+1</sub>	Y	Y-(定数)	Y <sub>n-1</sub> -Y <sub>n+1</sub>	+	-	+	-
I	<sup>-148,</sup> 837.896	<sup>-148,830</sup> 7.896	+ 0.537	<sup>-39,</sup> 534.737	<sup>-39,530</sup> 4.737	- 16.014			2543769	126446544
K29	839.385	8.385	+ 0.385	534.733	4.733	- 2.252			1822205	18883020
1	838.281	8.281	+ 14.382	532.485	2.485	- 1946			35739270	16114826
33	852.767	22.767	+ 14.191	532.787	2.787	+ 18.464			39550317	420369888
34	852.472	22.472	- 14.919	550.949	20.949	+ 17.960	312.538131			403597120
13	837.848	7.848	- 14.576	550.747	20.747	- 16.212	302.408272			127.231776
							614.946403	79.655561	288.676166	823.967008
							535.290842			535.290842
										$\frac{1}{2} = 267.645421$

面積計算書		工 区	フ ロ ン ク	47	計 算 者		精 算 者	測 考	(=)高柳 245-1			
点	①	②	③	④	⑤	⑥	⑧	×	⑤	②	×	⑥
	X	X-(定数)	X <sub>n-1</sub> -X <sub>n+1</sub>	Y	Y-(定数)	Y <sub>n-1</sub> -Y <sub>n+1</sub>	+		-	+		-
k.30	<sup>-148</sup> 837.898	<sup>-148.830</sup> 7.898	+24.877	<sup>-39</sup> 524.163	<sup>-39.510</sup> 14.163	-17.480				352.332951		138.057040
k.31	863.158	33.158	+29.921	515.005	5.005	-10.471				149.754605		347.197418
2	867.819	37.819	+5.650	513.692	3.692	+45.222				20.859800		1710.250818
30	868.808	38.808	-30.001	560.227	50.227	+47.195	1506.860227					1831.543560
12	837.818	7.818	-30.960	560.887	50.887	-9.480	1575.461520					74.114640
13	837.848	7.848	+14.654	550.747	40.747	-9.938				597.106538		77.993424
34	852.472	22.472	+14.919	550.949	40.949	-17.960				610.918131		403.597120
33	852.767	22.767	-14.191	532.787	22.787	-18.464	323.370317					420.369888
1	838.281	8.281	-14.869	532.485	22.485	-8.624	334.329465					71.413344
										3740.021529		1730.972025
										1532.744874		3541.794378
										2009.049504		2009.049504
										1/2 = 1004.524752		
										分筆あり		

# 面積計算書

工  
区

ブ  
ロ  
ック

67

計  
算  
者



精  
算  
者

備  
考

(2-2) 245-4

点	①	②	③	④	⑤	⑥	③ × ⑤		② × ⑥	
	X	X-(定数)	X <sub>n-1</sub> -X <sub>n+1</sub>	Y	Y-(定数)	Y <sub>n-1</sub> -Y <sub>n+1</sub>	+	-	+	-
35	837.833	7.833	+ 16.444	555.747	5.747	- 4.928		94.503668	38.601024	
36	854.262	24.262	+ 16.417	555.959	5.959	+ 4.790		97.828903		116.214980
38	854.250	24.250	- 16.444	560.537	10.537	+ 4.928	173.270428			119.504000
12	837.818	7.818	- 16.417	560.887	10.887	- 4.790	178.731879		37.448220	
							352.002307	192.332571	76.049244	235.718980
							159.669736			159.669736
								x 1/2 = 79.834868		
				1,004.52 - 77.83 = 924.69 ..... 245-1						



面積計算書		工 区	ブ ロ ック 47	計 算 者 	測 算 者 	備 考 高柳 236-4 (9) 245-2 (2) (4)				
点	①	②	③	④	⑤	⑥	③ × ⑤	② × ⑥		
	X	X - (定数)	X <sub>n-1</sub> - X <sub>n+1</sub>	Y	Y - (定数)	Y <sub>n-1</sub> - Y <sub>n+1</sub>	+	-		
2	148.867.819	-148.860 7.819	+ 29.325	39.513.692	-39.500 13.692	- 32.210		401.517900	251.849990	
K.314	297.650	37.650	+ 29.939	505.287	5.287	- 3.269		158.287493	123.077850	
5	877.758	37.758	- 1.899	510.423	10.423	+ 5.382	19.793277		203.213556	
14	875.751	35.751	- 1.454	510.669	10.669	+ 26.477	15.512726		946.579227	
15	876.304	36.304	- 27.426	536.900	36.900	+ 26.828	1012.019400		973.963712	
92	868.325	8.325	- 28.485	537.497	37.497	- 23.208	1068.102045		193.206600	
							2115.427448	559.805393	568.134440	2123.756495
							1555.622055			1555.622055
							$\sqrt{2} = 777.8110275$			
32	148.868.325	-148.860 8.325	+ 27.889	29.537.697	-39.530 7.497	- 4.846		209.083833	40.342950	
15	876.304	36.304	+ 28.068	536.900	6.900	+ 3.652	193.669200		132.582208	
16	876.393	36.393	- 27.889	541.149	11.149	+ 4.846	310.934461		176.360478	
31	868.415	8.415	- 28.068	541.246	11.746	- 3.652	329.686728		30.731580	
							640.621189	402.753033	71.074530	308.942686
							237.868156			237.868156
							$\sqrt{2} = 118.934078$			

面積計算書						工区	ブロック	47	計算者	精算者	備考	高柳 246 551 247 (4) 61
点	①	②	③	④	⑤	⑥	③ × ⑤	② × ⑥				
	X	X-(定数)	X <sub>n-1</sub> -X <sub>n+1</sub>	Y	Y-(定数)	Y <sub>n-1</sub> -Y <sub>n+1</sub>	+	-				
		-148.860			-39.540							
31	148.860.415	8.415	+27.287	-39.541.746	1.746	-33.082	47.643102	278.385030				
16	896.393	36.393	+28.663	541.149	1.149	+31.887	32.933787	1160.463591				
17	897.078	37.078	-27.287	573.633	33.633	+33.082	917.743671	1226.614396				
29	869.106	9.106	-28.663	574.231	34.231	-31.887	981.163153	290.363022				
							1898.906824	80.576889				
							1818.329935	568.748052				
								2387.077987				
								1818.329935				
								1/2 = 909.1649675				
		-148.860			-39.570							
29	148.869.106	9.106	+27.595	-39.574.231	4.231	-18.350	116.754445	167.075100				
17	897.078	37.078	+28.346	573.633	3.633	+17.147	102.981018	635.776466				
18	897.452	37.452	-27.595	571.378	21.378	+18.350	589.925910	687.244200				
27	869.483	9.483	-28.346	571.983	21.983	-17.147	623.130118	162.605001				
							1213.056028	219.735463				
							993.320565	329.700101				
								1323.020666				
								993.320565				
								1/2 = 496.6602825				

面積計算書		Ⅰ	ブロック	47	計算者	高柳	備考	232(4) (1)	231(1) (1)
点	①	②	③	④	⑤	⑥	③ × ⑤	② × ⑥	
	X	X - (定数)	X <sub>n-1</sub> - X <sub>n+1</sub>	Y	Y - (定数)	Y <sub>n-1</sub> - Y <sub>n+1</sub>	+ -	+ -	
		-143.860			-39.590				
27	-143,869.483	9.483	+27.659	-39,591.983	1.983	-15.163	54,847.797	143,790.729	
18	897.452	37.452	+28.276	591.378	1.378	+13.949	38,964.328	522,417.949	
19	897.759	37.759	-27.659	625.932	15.932	+15.163	-440,663.188	572,539.717	
26	869.793	9.793	-28.276	606.541	16.541	-13.949	467,713.316	136,602.557	
							908,376,504	93,812,125	
							814,564,379	280,393,286	
								1094,957,665	
								814,564,379	
								1/2 = 407,282,189.5	
		-143.860			-30.600				
26	-143,869.793	9.793	+27.723	-30,606.541	6.541	-12.040	181,326.143	117,907.720	
19	897.759	37.759	+28.207	605.932	5.932	710.829	187,323.924	408,892.211	
20	898.000	38.000	-27.723	617.370	17.370	+12.040	-481,548.510	457,520.000	
25	870.036	10.036	-28.207	617.972	17.972	-10.829	506,936.204	108,679.844	
							989,424,714	348,660,057	
								226,587,564	
								866,412,211	
							639,324,647	639,324,647	
								1/2 = 319,912,323.5	

# 面積計算書

工  
区

フ  
ロ  
ック

47

計  
算  
者

精  
算  
者



備  
考

211-2 (21)  
228  
高柳 249-4

高柳 211-1(1) H1

点	①	②	③	④	⑤	⑥	③ × ⑤		② × ⑥	
	X	X-(定数)	X <sub>n-1</sub> -X <sub>n+1</sub>	Y	Y-(定数)	Y <sub>n-1</sub> -Y <sub>n+1</sub>	+	-	+	-
24	-148 853.800	-148.850 3.800	+43.537	-39 618.322	-39.610 8.322	-29.745			362.314.914	113.031.000
20	898.000	48.000	+44.761	617.370	7.370	+25.686			329.888.570	1232.928.000
21	898.561	48.561	-0.172	644.008	34.008	+27.502	5.849.376			1335.524.622
22	897.828	47.828	-44.098	644.872	34.872	+3.107	1537.785.456			148.601.596
23	854.463	4.463	-44.028	647.115	37.115	-26.550	1634.099.220		118.492.650	
							3177.734.052	692.203.484	231.523.650	2717.054.218
							2485.530.568			2485.530.568
							1/2 = 1242.765.284			
9	-148 839.355	-148.830 9.355	+13.131	-39 618.633	-39.610 8.633	-28.449			113.359.923	266.140.395
24	853.800	23.800	+15.108	618.322	8.322	+28.482			125.728.776	677.871.600
23	854.463	24.463	-12.348	647.115	37.115	+29.466	458.296.020			720.826.758
7	841.452	11.452	-13.794	647.788	37.788	-0.344	521.247.672		3.939.488	
8	840.669	10.669	-2.097	646.771	36.771	-29.155	77.108.787		311.054.695	
							1.056.652.479	239.088.699	581.134.578	1.398.698.358
							817.563.780			817.563.780
							X <sub>2</sub> = 402.781.890			

面積計算書		工 区	フ ロ ック	47	計 算 者	精 算 者	備 考	高柳 211-100 (±) 248-1 (2)		
点	①	②	③	④	⑤	⑥	③ × ⑤	② × ⑥		
	X	X - (定数)	X <sub>n-1</sub> - X <sub>n+1</sub>	Y	Y - (定数)	Y <sub>n-1</sub> - Y <sub>n+1</sub>	+	-	+	-
		<del>428.833</del>			<del>-39.580</del>					
10	<del>428.837.863</del>	7.863	+30.001	<del>-39.586.653</del>	6.653	-32.647			199.596.653	256.703.361
28	869.356	39.356	+32.173	585.986	5.986	+31.319			192.587.578	1232.590.564
25	870.036	40.036	-30.001	617.972	37.972	+32.647	1159.197.972			1307.055.292
9	839.355	9.355	-32.173	618.633	38.633	-31.319	1242.939.509			292.989.245
							2382.137.481	572.184.231	549.692.606	2539.645.856
							1989.953.250			1989.953.250
										$\frac{1}{2} = 974.976625$
		<del>428.830</del>			<del>-39.570</del>					
11	<del>428.837.776</del>	7.776	+31.358	<del>-39.574.900</del>	4.900	-9.949			153.654.200	77.363.424
29	869.106	39.106	+31.580	574.231	4.231	+11.086			133.614.980	433.529.116
28	869.356	39.356	-31.243	585.986	15.986	+12.472	497.450.598			488.880.232
10	837.863	7.863	-31.608	586.653	16.653	-1.806	526.368.024			14.200.578
7	837.748	7.748	-0.087	584.180	14.180	-11.753	1.233.660			91.062.244
							1027.052.282	287.269.180	182.626.246	922.409.348
							739.783.102			739.783.102
										$\frac{1}{2} = 369.891651$

面積計算書										工区	ブロック	47	計算者	精算者	備考
点	①	②	③	④	⑤	⑥	③	×	⑤	②	×	⑥			
	X	X-(定数)	X <sub>n-1</sub> -X <sub>n+1</sub>	Y	Y-(定数)	Y <sub>n-1</sub> -Y <sub>n+1</sub>	+		-	+		-			
		<del>118.830</del>			<del>39.560</del>										
12	<del>148,237.018</del>	<del>7.818</del>	<del>+31.032</del>	<del>59,560.287</del>	<del>0.287</del>	<del>-14.673</del>			<del>27,525.324</del>	<del>114,713.514</del>					
30	<del>868.808</del>	<del>38.808</del>	<del>+31.228</del>	<del>560.227</del>	<del>0.227</del>	<del>+13.344</del>			<del>7,102.376</del>			<del>517,853.952</del>			
29	<del>869.106</del>	<del>39.106</del>	<del>-31.032</del>	<del>574.231</del>	<del>14.231</del>	<del>+14.673</del>	<del>441,616.392</del>					<del>573,802.338</del>			
11	<del>837.776</del>	<del>7.776</del>	<del>-31.288</del>	<del>574.900</del>	<del>14.900</del>	<del>-13.344</del>	<del>466,191.200</del>			<del>103,762.944</del>					
							<del>907,807.592</del>	<del>34,527.760</del>	<del>218,476.458</del>	<del>1,991,656.290</del>					
							<del>873,179.832</del>			<del>873,179.832</del>					
										<del>1/2 = 436.589916</del>					

面積計算書		工 区	ブ ロ ック	47	計 算 者	精 算 者	備 考	(3-1) 245-6	(3-2) 245-2
点	①	②	③	④	⑤	⑥	③ × ⑤	② × ⑥	
	X	X-(定数)	X <sub>n-1</sub> -X <sub>n+1</sub>	Y	Y-(定数)	Y <sub>n-1</sub> -Y <sub>n+1</sub>	+	-	
11	<sup>-168</sup> 937.776	<sup>-148.830</sup> 7.776	- 16.394	<sup>-39</sup> 574.900	<sup>-39.560</sup> 14.900	- 13.662	244.270600	106.235712	
12	937.818	7.818	+ 16.474	560.887	0.887	- 14.363	14.612438	112.289934	
38	856.250	24.250	+ 16.394	560.537	0.537	+ 13.662	8.803578	331.303500	
37	854.212	24.212	- 16.474	576.549	14.549	+ 14.363	239.680226	347.756956	
							483.950826	23.416016	
							460.534810	218.525646	
								679.060456	
								460.534810	
								$\times \frac{1}{2} = 230.267405$	
37	<sup>-168</sup> 854.212	<sup>-148.850</sup> 4.212	- 14.856	<sup>-39</sup> 576.549	<sup>-39.560</sup> 14.549	- 13.694	216.139944	57.679128	
39	854.250	4.250	+ 14.596	560.537	0.537	- 14.322	7.838052	60.868500	
30	868.808	18.808	+ 14.856	560.227	0.227	+ 13.694	3.372312	257.556752	
29	869.106	19.106	- 14.596	576.231	14.231	+ 14.322	207.715676	273.636132	
							423.855620	11.210364	
							412.645256	118.547628	
								531.192884	
								412.645256	
								$\times \frac{1}{2} = 206.322628$	

# 面積計算書

工  
区

フ  
ロ  
ック

47

計算者



計算者



備考

14  
庫 47-1号

点	①	②	③	④	⑤	⑥	③ × ⑤		② × ⑥	
	X	X - (定数)	X <sub>n-1</sub> - X <sub>n+1</sub>	Y	Y - (定数)	Y <sub>n-1</sub> - Y <sub>n+1</sub>	+	-	+	-
K31-2	<sup>-148</sup> 901.015	<sup>-148.900</sup> 1.015	-0.555	<sup>3P</sup> 504.1P2	<sup>-3P.4PP</sup> 5.1P2	-2.657	2.881560			2.6P6855-
K32	917.593	17.593	+17.193	499.3P3	0.3P3	-2.142		6.73326P-		37.684206-
K33	918.148	18.148	-16.578	502.050	3.050	+4.7PP/	50.562P00-			87.0P2252
							53.444460	6.73326P	40.381061	87.0P2252
							46.7111P1			46.7111P1
							x 1/2 = 23.3555P55-			
							= 23.35			



# 面積計算書

工  
区

ブ  
ロ  
ック

47

計  
算  
者

算  
算  
者

備  
考

水路 8号線  
" 9号線

点	①	②	③	④	⑤	⑥	③ × ⑤		② × ⑥	
	X	X-(定数)	X <sub>n-1</sub> -X <sub>n+1</sub>	Y	Y-(定数)	Y <sub>n-1</sub> -Y <sub>n+1</sub>	+	-	+	-
7	841.452	41.452	+ 56.513	647.788	7.788	- 4.926		440.123244	204.192552	
22'	900.320	100.320	+ 56.912	644.743	4.743	- 0.941		269.933616	94.401120	
5	898.364	98.364	- 56.513	646.847	6.847	+ 4.926	386.944511			484.541064
6	843.807	43.807	+ 56.912	649.669	9.669	+ 0.941	550.282128			41.222387
							937.226639	710.056860	298.593672	525.763451
							227.169779			227.169779
								½ = 113.5848895		
								≈ 113.58		
14	895.751	5.751	- 0.803	510.669	0.669	- 133.585	0.537207		768.247335	
3	897.758	7.758	+ 4.832	510.423	0.423	+ 133.791		2.043936		1037.950578
4	900.583	10.583	+ 2.562	644.160	134.460	+ 134.320		344.486520		1421.508560
22'	900.320	10.320	- 2.755	644.743	134.743	+ 0.412	376.216965			4.251840
22	897.828	7.828	- 1.759	644.872	134.872	- 0.735	237.239848		5.753580	
21	898.561	8.561	- 2.077	644.008	134.008	- 134.203	278.334616		1148.911883	
							887.328636	346.530456	1922.912798	2463.710978
							540.798180			540.798180
								½ = 270.39909		
								≈ 270.40		

# 面積計算書

工  
区

フ  
ロ  
ツ  
ク

47

計  
算  
者

精  
算  
者

備  
考

隅切Ⅲ  
隅切Ⅳ

点	①	②	③	④	⑤	⑥	③ × ⑤		② × ⑥	
	X	X-(定数)	X <sub>n-1</sub> -X <sub>n+1</sub>	Y	Y-(定数)	Y <sub>n-1</sub> -Y <sub>n+1</sub>	+	-	+	-
4	-148 900.583	-148.898 2.583	+ 2.267	-39 644.460	-39.640 4.460	- 0.117		10.110 820	0.302 211	
Ⅲ	900.631	2.631	- 2.219	646.730	6.730	+ 2.387	14.933 870			6.280 197
5	898.364	0.364	- 0.048	646.847	6.847	- 2.270	0.328 656		0.826 280	
							15.262 526	10.110 820	1.128 491	6.280 197
							5.151 706			5.151 706
								1/2=2.575 853		
6	-148 843.807	-148.840 3.807	- 0.641	-39 649.669	-39.640 9.669	- 2.036	6.197 829			7.751 032
Ⅳ	840.811	0.811	- 3.138	649.824	9.824	- 2.898	30.827 712		2.350 278	
8	840.669	0.669	+ 0.641	646.771	6.771	- 2.036		4.340 211	1.362 084	
7	841.452	1.452	+ 3.138	647.788	7.788	+ 2.898		24.438 944		4.207 896
							37.025 541	28.778 955	3.712 362	11.958 948
							8.246 586			8.246 586
								1/2=6.123 293		

計年	50	計		檢
月	8	算		查
算日	21	者		者

B. NO. 47

各筆面積計算書

地番	算式	隅切	地積	摘要
1	高柳 245-3		267 64	
2	245-1		1.004 52	245-1 929.69 245-4 79.83
3	236-1 (1)		777 81	
4	245-2 (2)		118 93	
5	246-		909 16	
6	247 (3)		496 66	
7	232 (4)		407 28	
8	231 (5)		319 91	
9	211-2 228 249-4		1.242 76	
10	211-1 (6)		408 78	
11	211-1 (7)		994 97	
12	248-1		369 89	
13	245-2 (8)		436 58	245-6 230.26 245-2 206.32
		合計	7.754 89	(7778.24)
		全体	7.754 95	(7778.30)
		差	0 06	
	空地面積		7.754 89	13筆
	水路面積		383 98	
			(113.58)	8号館 217
			(270.40)	9号館 217
14	保 47-1 号		23 33	1筆