

街区略図

工区

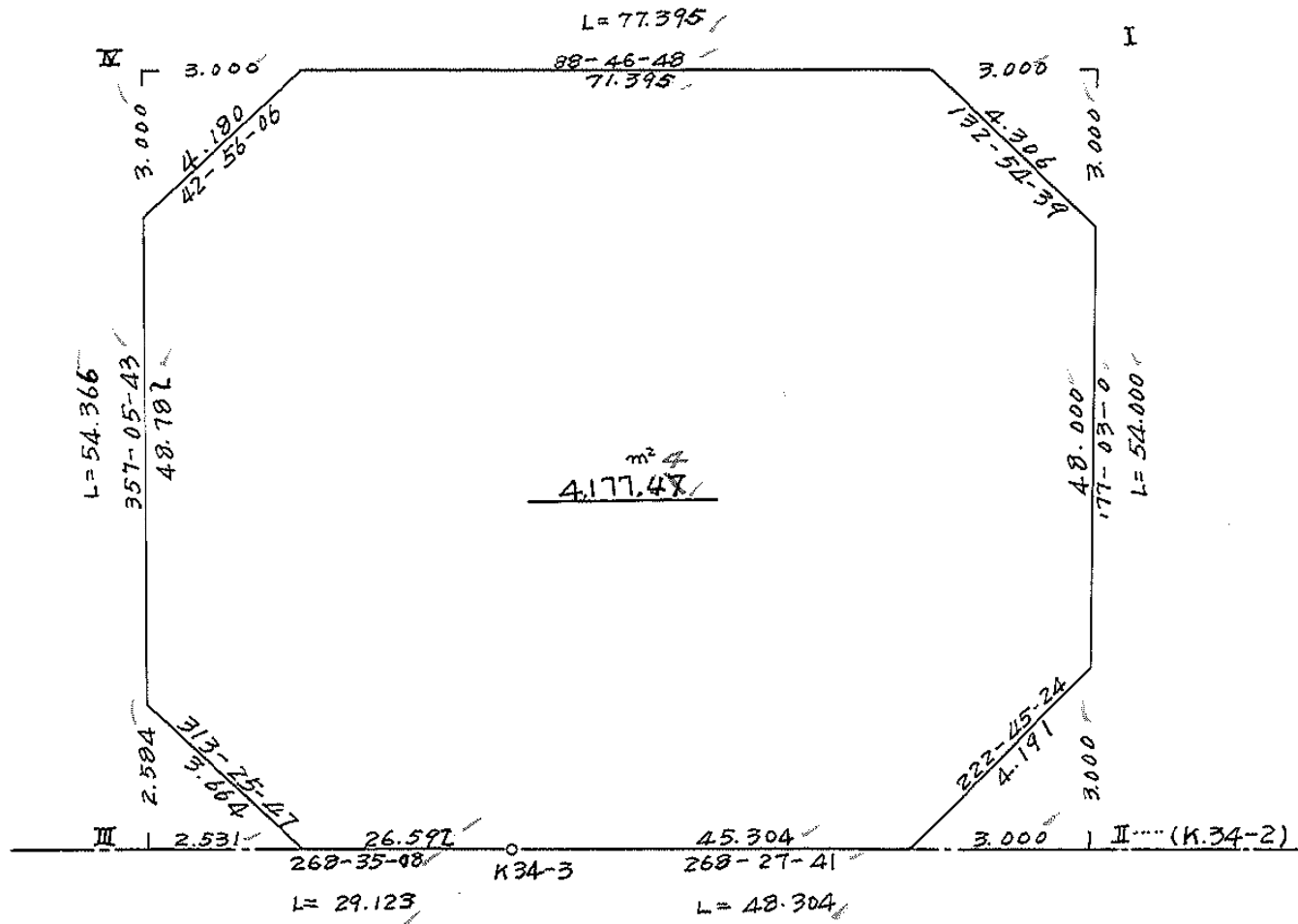
ブロック

50

記入者



点検者



面積計算書

工
区

ブ
ロ
ック

50

計
算
者



精
算
者



備
考

全

点	①	②	③	④	⑤	⑥	③ × ⑤		② × ⑥	
	X	X - (定数)	X _{n-1} - X _{n+1}	Y	Y - (定数)	Y _{n-1} - Y _{n+1}	+	-	+	-
I	-148,906.887	-148,900. - 6.887	+52,280	-39,654.399	-39,650. - 4.399	-80,156			229,979,720	552,034,372
II	960,815	60,815	+55,225	651,620	1,620	+45,508			89,464,500	2767,569,020
K3A-3	962,112	62,112	+2,916	697,907	49,907	+77,401			100,612,512	4807,530,912
III	962,831	62,831	-53,577	729,021	79,021	+31,869	4233,708,117			2002,361,139
IV	908,535	8,535	-55,944	731,776	81,776	-74,622	4574,876,544			636,898,770
							8808,584,661	420,056,732	1188,933,142	9577,461,071
							8388,527,929			8388,527,929
			7327							
			I / II / III / IV							
			4.194.26 - (4.50 + 4.50 + 3.27 + 4.50) = 4.177.49							X/2 = 4,194,263,964.5
			ii							
			16.77							

面地計算

画地略図

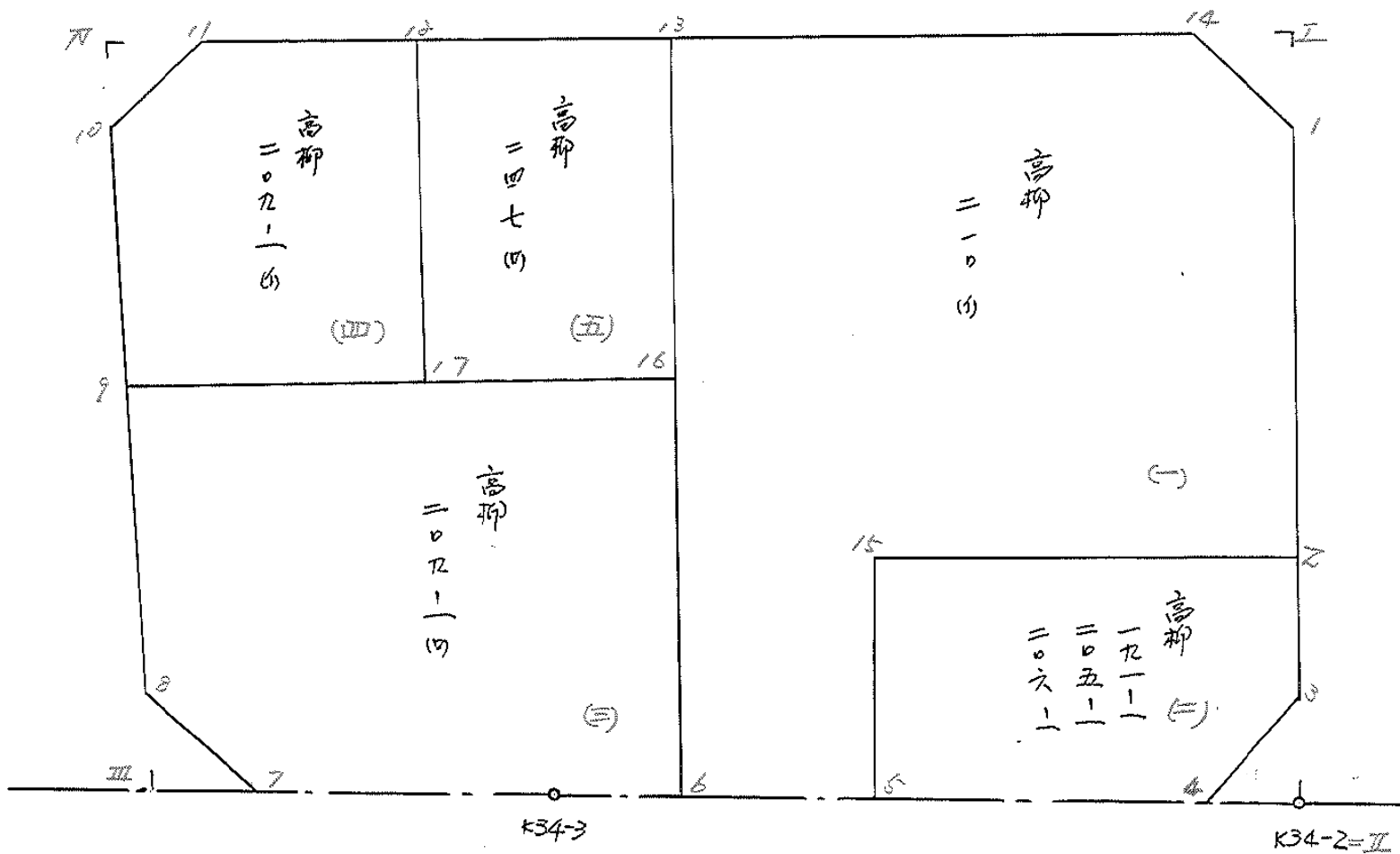
工区

ブロック

50

記入者

点検者



面積計算書

工
区

ブ
ロ
ック

50

計
算
者

精
算
者

備
考

高柳 210 (1)

点	①	②	③	④	⑤	⑥	③ × ⑤		② × ⑥	
	X	X - (定数)	X _{n-1} - X _{n+1}	Y	Y - (定数)	Y _{n-1} - Y _{n+1}	+	-	+	-
		-128.700 -			-39.650 -					
14	-148.966.951	6.951	+2.126	-39.657.398	7.398	-40.987		15.728148	284.900637	
1	909.883	9.883	+38.743	654.245	4.245	-4.999		164.464035	49.405117	
2	945.694	45.694	+36.374	652.399	2.399	+24.766		87.261226		1131.657604
15	946.257	46.257	+15.846	679.011	29.011	+26.222		459.708306		1212.951054
5	961.540	61.540	+15.697	678.621	28.621	+15.008		449.263837		923.592320
6	961.954	61.954	-53.783	694.019	44.019	+16.611	2367.473877			1029.117894
13	907.757	7.757	-55.003	695.232	45.232	-36.621	2487.895696		284.069097	
							4855.369573	1176.425552	618.374851	4277.318872
							3678.944021			3678.944021
										1/2 = 1839.4720105

面積計算書

工
区

ブ
ロ
ック

50

計
算
者

精
算
者

備
考

高柳
-91-1
205-1
206-1

点	①	②	③	④	⑤	⑥	③ × ⑤		② × ⑥	
	X	X - (定数)	X _{n-1} - X _{n+1}	Y	Y - (定数)	Y _{n-1} - Y _{n+1}	+	-	+	-
15	108,946,257	^{-148,940} 6,257	- 15,846	39,679,011	^{-39,650} 29,011	- 26,222	459,708,306		164,071,054	
2	945,694	5,694	+ 11,562	652,399	2,399	- 27,237		27,737,238	155,087,478	
3	957,819	17,819	+ 15,202	651,774	1,774	+ 2,220		26,968,348		39,558,180
4	980,896	20,896	+ 3,721	654,619	4,619	+ 26,847		17,187,299		560,994,912
5	961,540	21,540	- 14,639	678,621	28,621	+ 24,392	418,982,819			525,403,680
							878,691,125	71,892,885	319,158,532	1,125,956,772
							806,798,240			806,798,240
										$\frac{1}{2} = 403,399,120$

面積計算書

工
区

ブ
ロ
ック

50

計
算
者

精
算
者



備
考

商
標 209-1(B)

点	①	②	③	④	⑤	⑥	③ × ⑤		② × ⑥	
	X	X - (定数)	X _{n-1} - X _{n+1}	Y	Y - (定数)	Y _{n-1} - Y _{n+1}	+	-	+	-
16	-108,934,450	-148,930 4,450	+ 26,739	-39,694,635	-39,690 4,635	- 36,403			173,935,265	161,993,350
6	961,954	31,954	+ 27,662	694,019	4,019	+ 5,272			111,173,578	168,461,488
X-34-3	962,112	32,112	+ 0,814	699,907	9,907	+ 32,472			8,064,298	1042,740,864
7	962,768	32,768	- 1,862	726,491	36,491	+ 29,245	67,946,242			958,300,160
8	960,250	30,250	- 27,553	729,152	39,152	+ 3,931	1078,755,056			118,912,750
9	935,215	5,215	- 25,800	730,422	40,422	- 34,517	1042,887,600		180,006,155	
							2189,588,898	243,173,141	341,999,505	2288,415,262
							1946,415,757			1946,415,757
									1/2 = 973,207,878.5	

面積計算書

工区

ブロック

50

計算者

精算者



備考

高 209-1
柳 247 W1

点	①	②	③	④	⑤	⑥	③ × ⑤		② × ⑥	
	X	X - (定数)	X _{n-1} - X _{n+1}	Y	Y - (定数)	Y _{n-1} - Y _{n+1}	+	-	+	-
17	-148,934.784	34.784	+27.126	-39,710.257	0.257	+19.588		6,971.382		681,348.992
9	935,215	35.215	-23,253	730,422	20.422	+21,367	474,872.766			752,438.905
10	911,531	11.531	-26,744	731,624	21,624	-1,645	578,312.256			18,968.495
11	908,471	8.471	-3,442	728,777	18,777	-20,790	64,630.434			176,112.090
12	908,089	8.089	+26,313	710,834	0.834	-18,520		21,945.042		149,808.280
							1117,815.256	28,916.424	344,888.865	1233,787.897
							1088,899.032			1088,899.032
								×1/2 = 544,449.516		
16	-148,934.450	34.450	+27.027	-39,694.635	4.635	+15.025		125,270.145		517,611.250
17	934,784	34.784	-26,361	710,257	20.257	+16,199	533,994.777			563,466.016
12	908,089	8.089	-27.027	710,834	20.834	-15.025	563,080.518			121,537.225
13	907,757	7.757	+26,361	695,232	5.232	-16,199		127,920.752		125,655.643
							1097,075.295	263,190.897	247,192.868	1081,077.266
							833,884.398			833,884.398
								×1/2 = 416,942.199		

面積計算書

Ⅰ
区

ブ
ロ
ック

50

計
算
者

精
算
者

備
考

※ミキ)

Ⅰ

Ⅱ

Ⅲ

点	①	②	③	④	⑤	⑥	③ × ⑤		② × ⑥		
	X	X-(定数)	X _{n-1} -X _{n+1}	Y	Y-(定数)	Y _{n-1} -Y _{n+1}	+	-	+	-	
I	-148,906,887	-148,900.- 6.887	+2.932	-39,654,399	-39,650.- 4.399	-3.153			12,897,868	21,714,711	
1	909,883	9.883	+0.064	654,245	4,245	+2.999			0,271,680		29,639,117
14	906,951	6.951	-2.996	657,398	7,398	+0.154	22,164,408				1,070,454
							22,164,408	13,169,548	21,714,711		30,709,571
							8,994,860				8,994,860
								$\frac{1}{2} = 4,497,430$			
II	-148,960,815	-148,950.- 10.815	+3.07	-39,651,620	-39,650.- 1,620	+2.845			4,984,740		30,768,675
4	960,896	10.896	-2.996	654,619	4,619	+0.154	13,838,524				1,577,984
3	957,819	7.819	-0.081	651,774	1,774	-2.999	0,143,694			23,449,181	
							13,982,218	4,984,740	23,449,181		32,446,659
							8,997,478				8,997,478
								$\frac{1}{2} = 4,498,739$			
7	-148,962,768	-148,960.- 2.768	+2.581	-39,726,491	-39,720.- 6,491	-0.131			16,753,271	0,362,608	
III	962,831	2,831	-2,518	729,021	9,021	+2,661	22,714,878				7,538,291
8	960,250	0,250	-0,063	729,152	9,152	-2,530	0,576,576			0,632,500	
							23,291,454	16,753,271	0,995,108		7,538,291
							6,538,183				6,538,183

$\frac{1}{2} = 3,269,0915$ 三和測量建設株式会社

面積計算書

工
区

ブ
ロ
ック

50

計
算
者

精
算
者

備
考

ズミキリ
7

点	①	②	③	④	⑤	⑥	③ × ⑤	② × ⑥
	X	X-(定数)	X _{n-1} -X _{n+1}	Y	Y-(定数)	Y _{n-1} -Y _{n+1}	+	-
77	-118,908.535	^{-118,900.-} 8.535	-3.060	-39,731.776	^{-39,720.-} 11.776	-2.847	36,034.560	24,299.45
11	908.471	8.471	+2.996	728.777	8.777	-0.152	26,295.892	1,287.592
10	911.531	11.531	+0.064	731.624	11.624	+2.999	0,743.936	34,581.469
							36,034.560	27,039.828
							8,994.732	25,586.737
								34,581.469
								8,994.732
								x ^{1/2} =4,497.366

