

街区略図

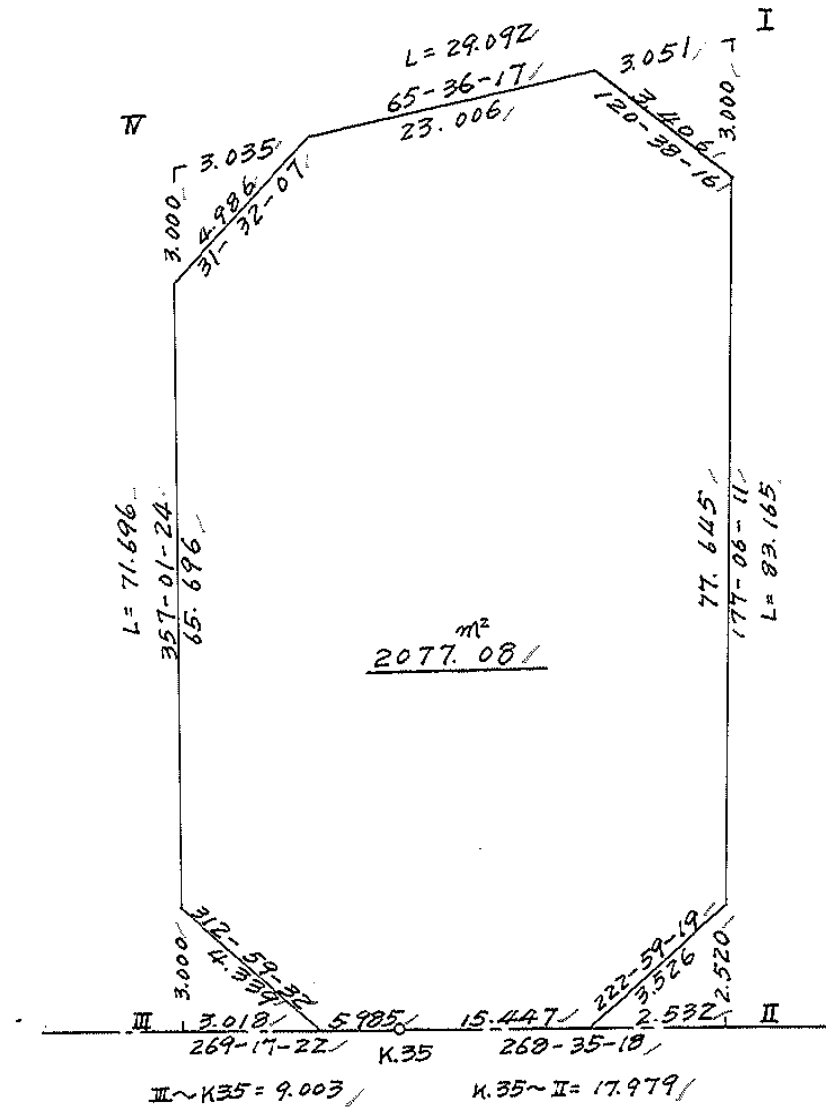
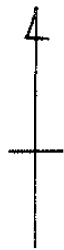
工区

ブロック

51

記入者

点検者



面積計算書

工区

ブロック

51

計算者



縮算者



備考

全面積

点	①	②	③	④	⑤	⑥	③ × ⑤		② × ⑥		
	X	X - (定数)	X _{n-1} - X _{n+1}	Y	Y - (定数)	Y _{n-1} - Y _{n+1}	+	-	+	-	
I	^{-148,} 879.920	^{-148,800.} 79.920	+ 71.043	-39.739.236	^{-39,700.} 39.236	- 30.698			2787.443.148.245.384.160		
II	962.979	162.979	+ 83.503	735.033	35.033	+ 13.770			2925.360.599		2244.220.830
K.35	963.423	163.423	+ 0.556	753.006	53.006	+ 26.975			2947.1336		4408.335425
III	963.535	163.535	- 71.487	762.008	62.008	+ 12.725			4432.765896		2080.982875
IV	891.936	91.936	- 83.615	765.731	65.731	- 22.772			5496.097565		2093.566592
									9928.863446		5742.275083
									4446.950752		8777.539130
									486588379		4186588379
							I	II	III	x/2 = 2093.294189	
							2093.29 (4.26 + 3.19 + 4.52 + 4.24) = 2077.08				

面地計算

画地略図

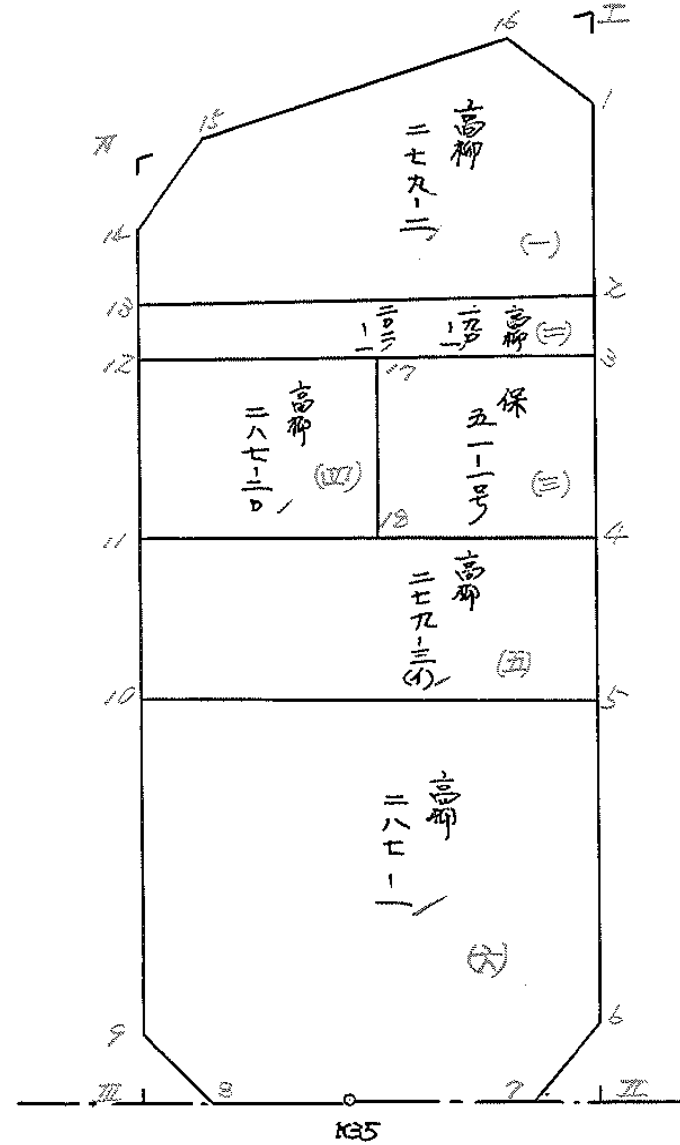
工区

ブロック

51

記入者

点検者



面積計算書

工区

ブロック

5/

計算者



筋算者



備考

高柳

(1) 279-2

(2) 190-1
202-1

点	①	②	③	④	⑤	⑥	③ × ⑤	② × ⑥		
	X	X - (定数)	X _{n-1} - X _{n+1}	Y	Y - (定数)	Y _{n-1} - Y _{n+1}	+	-		
1	-148, 882.916	-148, 880, 2.916	+ 22.252	-39, 739.084	-39, 730, 9.084	- 3.969	202.137168	11.573 604		
2	903.432	23.432	+ 21.926	738.046	8.046	+ 25.976	176.416596	608.669672		
13	904.842	24.842	- 8.500	765.060	35.060	+ 27.529	298.010000	683.875418		
14	894.932	14.932	- 14.160	765.575	35.575	- 2.093	503.742000	31.252 676		
15	890.682	10.682	- 13.752	762.967	32.967	- 23.560	453.362184	251.667 920		
16	881.180	1.180	- 7.766	742.015	12.015	- 23.883	93.308490	28.181 940		
							1348.422674378	553764.322	676140.1292	545050
							969.868910		969.868910	
							$\times \frac{1}{2} = 484.934455$			
2	-148, 903.432	-148, 900, 3.432	+ 1.436	-39, 738.046	-39, 730, 8.046	- 27.158	11.554056	93.206256		
3	906.278	6.278	+ 4.253	737.902	7.902	+ 26.866	33.607206	168.664748		
12	907.685	7.685	- 1.436	764.912	34.912	+ 27.158	50.133 632	208.709 230		
13	904.842	4.842	- 4.253	765.060	35.060	- 26.866	149.110180	130.085172		
							199.243812	45.161262	223.291428	377.373978
							154.082550		154.082550	
							$\times \frac{1}{2} = 77.041275$			

面積計算書

工区

ブロック

51

計算者



精算者



備考

高柳

(3) 保51-1号 (4) 287-20

点	①	②	③	④	⑤	⑥	③ × ⑤		② × ⑥	
	X	X-(定数)	X _{n-1} -X _{n+1}	Y	Y-(定数)	Y _{n-1} -Y _{n+1}	+	-	+	-
3	-148, 906.278	-148,900, 6.278	+ 11.164	-39, 737.902	-39,730, 7.902	- 16.210			88.217928	101.766380
4	918.255	18.255	+ 12.789	737.296	7.296	+ 14.988			93.301248	273.605940
18	919.066	19.066	- 11.164	752.890	22.890	+ 16.210	255.543960			309.059860
17	907.091	7.091	- 12.788	753.506	23.506	- 14.988	300.594728		106.279908	
							556.138688	181.519176	208.046288	582.665800
							374.619512			374.619512
							× 1/2 = 187.309756			
17	-148, 907.091	-148,900, 7.091	+ 11.381	-39, 753.506	-39,750, 3.506	- 12.022			39.901786	85.248002
18	919.066	19.066	+ 12.568	752.890	2.890	+ 10.783			36.321520	205.588678
11	919.659	19.659	- 11.381	764.289	14.289	+ 12.022	162.623109			236.340498
12	907.685	7.685	- 12.568	764.912	14.912	- 10.783	187.414016		82.867355	
							350.037125	76.223306	168.115357	441.929176
							273.813819			273.813819
							× 1/2 = 136.9069095			

面積計算書

工
区

ブ
ロ
ック

51

計
算
者

精
算
者

備
考

高柳

(5) 279-3(5) (6) 287-1

点	①	②	③	④	⑤	⑥	③ × ⑤	② × ⑥
	X	X - (定数)	X _{n-1} - X _{n+1}	Y	Y - (定数)	Y _{n-1} - Y _{n+1}	+	-
5	918.255% <small>-148,</small>	18.255% <small>-148,900-</small>	+ 10.331	737.296% <small>-39,</small>	7.296% <small>-39,730-</small>	- 27.587%		75.374976
5	929.990%	29.990% + 13.131		736.702%	6.702% + 26.384			88.003962
10	931.386%	31.386% - 10.331		763.680%	33.680% + 27.587%	- 347.948080		865.245592
11	919.659%	19.659% - 13.131		764.289%	34.289% - 26.384	- 450.248259		518.683056
							798.196939	163.378938
							1022.283741	1657.101742
							634.918001	634.918001
							x 1/2 = 317.4090005%	
6	929.990% <small>-148,</small>	29.990% <small>-148,900-</small>	+ 29.076	736.702% <small>-39,</small>	36.702% <small>-39,700-</small>	- 28.520%		1067.147352
6	960.462%	60.462% + 33.051		735.160%	35.160% + 0.862			1162.073160
7	963.041%	63.041% + 2.961		737.564%	37.564% + 17.846			111.227004
x.35	963.423%	63.423% + 0.447		753.006%	53.006% + 21.426			24.223742
8	963.498%	63.498% - 2.884		758.990%	58.990% + 9.158	- 170.127160		581.514684
9	960.539%	60.539% - 32.112		762.164%	62.164% + 4.690	- 1996.240368		283.927910
10	931.386%	31.386% - 30.549		763.680%	63.680% - 25.462	- 1945.360320		799.150332
							4111.697848	2364.671258
							1654.465132	3401.491722
							1747.026590	1747.026590
							x 1/2 = 873.513295%	

面積計算書		工区	ブロック	51	計算者	縮算者	備考	陽切工. II		
点	①	②	③	④	⑤	⑥	③ × ⑤	② × ⑥		
	X	X - (定数)	X _{n-1} - X _{n+1}	Y	Y - (定数)	Y _{n-1} - Y _{n+1}	+ -	+ -		
I	⁻¹⁴⁸ 879.920	^{-148.87A} 0.920	+1.736	⁻³⁹ 739.236	^{-39.739} 0.236	-2.431	0.406666	2.66520		
1	882.916	2.916	+1.260	739.084	0.084	+2.779	0.105840	10.882564		
16	881.180	2.180	-2.996	742.015	3.015	+2.152	0.032940	0.331360		
							0.032940	0.515536		
							0.517404	2.66520		
								11.213A24		
								8.517404		
								$x \frac{1}{2} = 4.25870Y = 4.26$		
6	⁻¹⁴⁸ 960.462	^{-148.960} 0.462	-0.062	⁻³⁹ 735.160	^{-39.735} 0.160	-2.531	0.009920	1.169322		
II	962.979	2.979	+2.579	735.033	0.033	+2.404	0.085107	7.161516		
7	963.041	3.041	-2.517	737.564	2.564	+0.127	6.453598	0.386207		
							6.463508	0.085107		
							6.378401	1.169322		
								7.547723		
								6.378401		
								$x \frac{1}{2} = 3.1892005 = 3.19$		

面積計算書		工区	ブロック	51	計算者	縮尺	備考	附図Ⅳ, Ⅶ		
点	①	②	③	④	⑤	⑥	③ × ⑤	② × ⑥		
	X	X - (定数)	X _{n-1} - X _{n+1}	Y	Y - (定数)	Y _{n-1} - Y _{n+1}	+	-	+	-
8	⁻¹⁰⁸ 963.498	^{-108.960} 2.498	+2.996	⁻³⁹ 759.990	^{-39.758} 0.990	-0.156			2.960040	0.505688
Ⅳ	963.525	2.525	-2.959	762.008	4.008	+3.174	11.859672			11.220090
9	960.539	0.539	-0.037	762.164	4.164	-3.018	0.154068			1.626702
							12.013740	2.966040	2.172390	11.220090
							9.047700			9.047700
							$\times \frac{1}{2} = 4.523850 \approx 4.52$			
Ⅲ	⁻¹⁰⁸ 894.932	^{-108.890} 4.932	+1.254	⁻³⁹ 765.575	^{-39.762} 3.575	+2.764			4.083050	13.632048
Ⅶ	891.936	1.936	-4.250	765.731	3.731	-2.608	15.856750		5.029088	
15	890.682	0.682	+2.996	762.967	0.967	-0.156			2.897132	0.100392
							15.856750	7.380182	5.155480	13.632048
							8.476568			8.476568
							$\times \frac{1}{2} = 4.238284 = 4.24$			

