

街区略図

工区

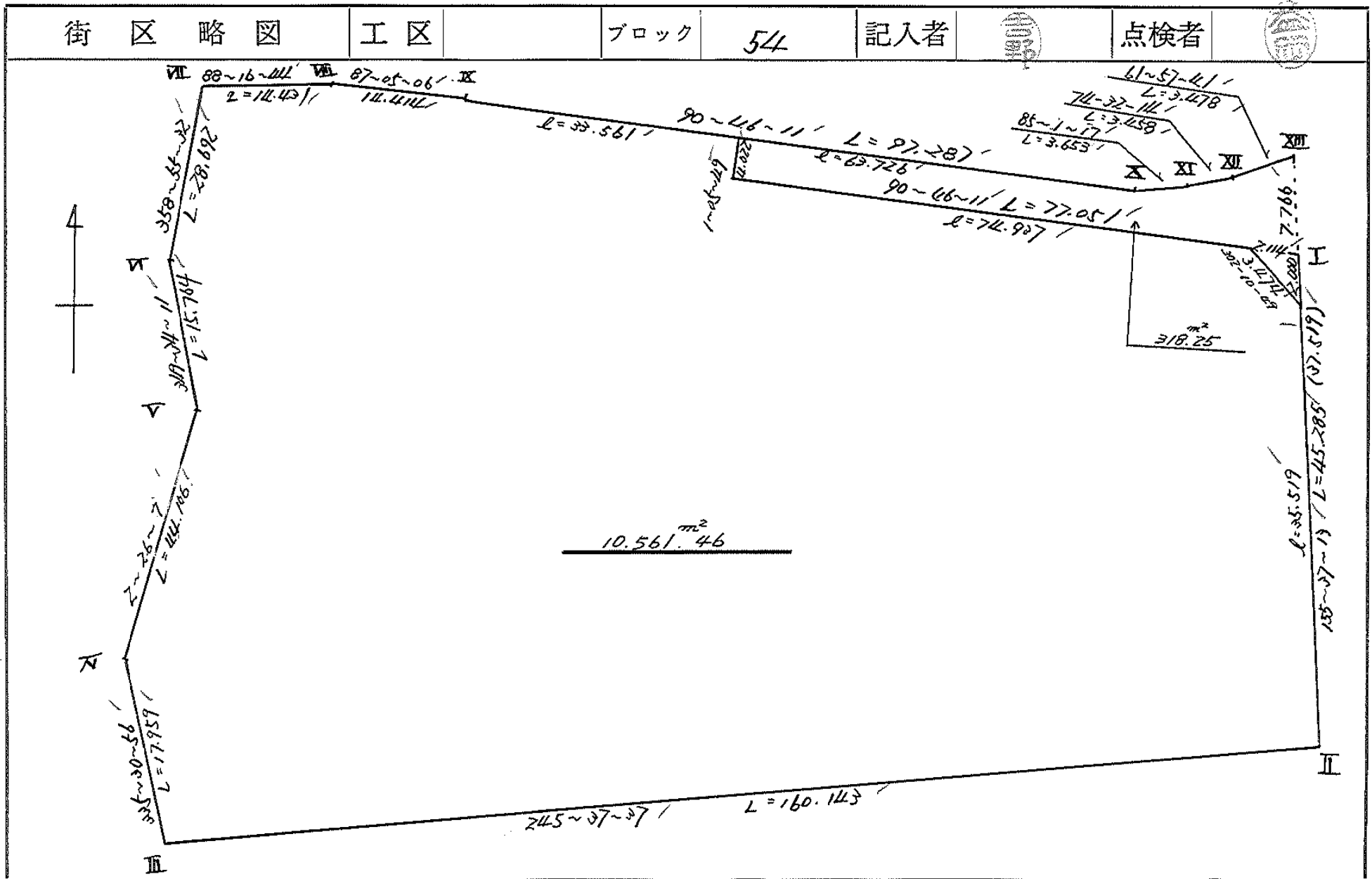
ブロック

54

記入者



点検者



面積計算書

工区

ブロック

52

計算者

精算者



備考

全

点	①	②	③	④	⑤	⑥	③ × ⑤		② × ⑥	
	X	X-(定数)	X _{n-1} -X _{n+1}	Y	Y-(定数)	Y _{n-1} -Y _{n+1}	+	-	+	-
II	⁻¹⁰⁸ 792.436	⁻¹⁴⁸⁷⁴⁰ 42.436	+107.334	⁻³⁹ 683.460	⁻³⁹⁶⁸⁰ 3.460	+127.178		371.375640		5396.925608
III	849.523	108.523	+49.943	829.331	149.331	+153.314		7428.171933		6.638.095222
IV	832.179	92.179	-60.410	836.774	136.774	+5.569	9470.717340			513.344851
V	788.113	48.113	-59.570	834.900	154.900	+0.980	9227.393000			47.150740
VI	772.609	32.609	-44.191	837.754	157.754	+3.392	6971.307014			110.609728
VII	743.922	3.922	-29.120	839.292	158.292	-13.886	4609.463040		54.460892	
VIII	743.489	3.489	-1.166	823.868	143.868	-28.819	167.750088		100.549491	
IX	742.756	2.756	+0.574	809.473	129.473	-111.673		94.317502	307.770788	
X	744.063	4.063	+0.990	712.195	32.195	-100.917		31.873050	410.025771	
XI	743.746	3.746	-1.239	708.556	28.556	-6.972	35.380884		26.117112	
XII	742.824	2.824	-2.557	705.223	25.223	-6.403	64.495211		18.082072	
XIII	741.189	1.189	+39.612	702.153	22.153	-21.763		877.524636	25.876207	
							30.546.506597	8.783.262761	942.882333	22706.126149
							21.763.243816			21763.243816
							1/2 = 10,881.621908			
			10881.62	(1.91 + 318.25)			= 10561.46 m ²			
				220.16						

画地計算

画地略図

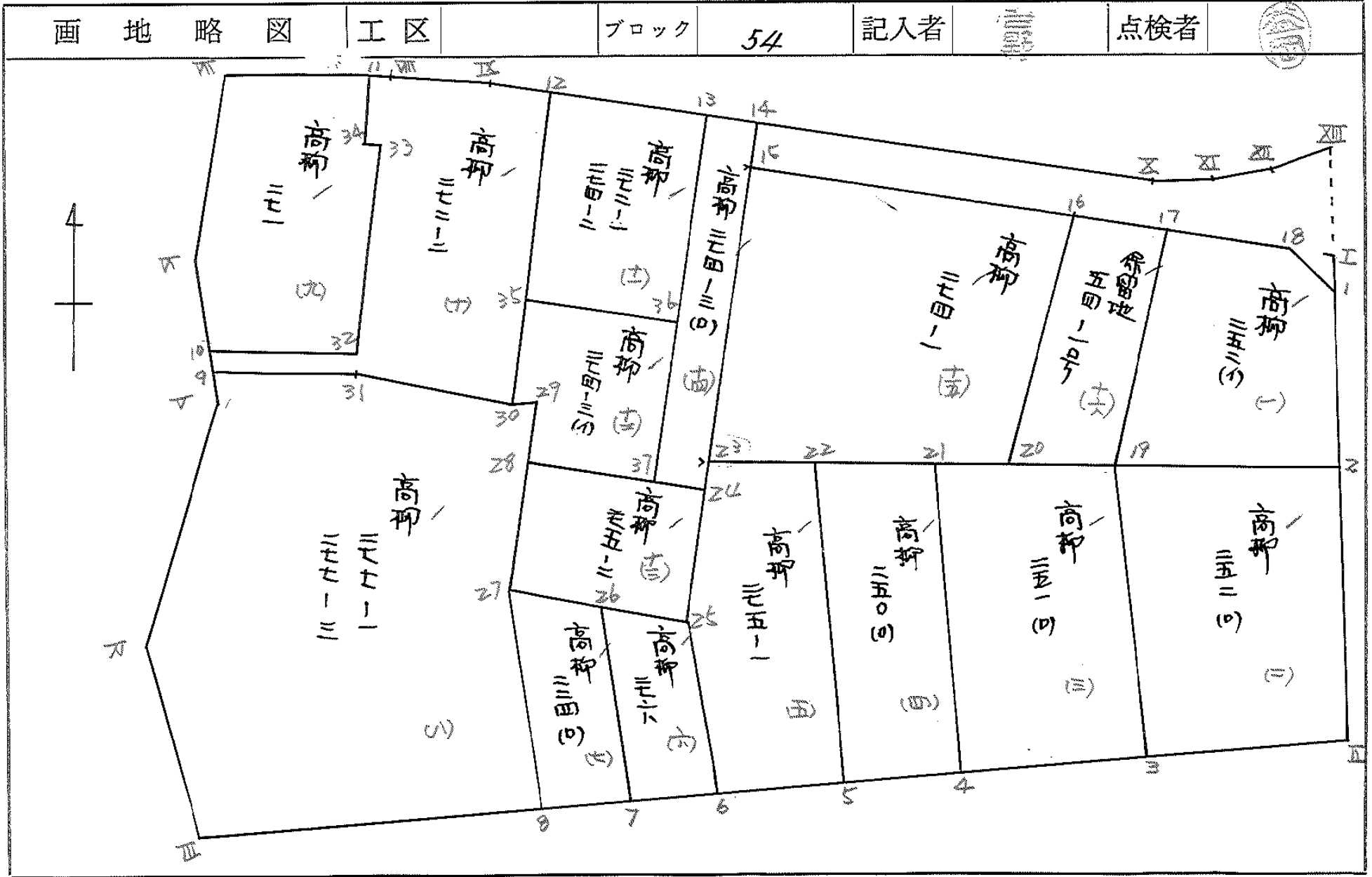
工区

ブロック

54

記入者

点検者



面積計算書

工
区

ブ
ロ
ック

22

計
算
者

精
算
者



備
考

1. 高野 252 (A)
2. " 252 (D)

点	①	②	③	④	⑤	⑥	③ × ⑤		② × ⑥	
	X	X - (定数)	X _{n-1} - X _{n+1}	Y	Y - (定数)	Y _{n-1} - Y _{n+1}	+	-	+	-
1	750.095	10.085	+16.891	678.121	8.121	-9.756		137.171811	98.389260	
2	765.126	25.126	+22.382	691.305	1.305	+28.766		29.208510	712.734116	
19	772.467	32.467	-17.229	726.487	36.487	+34.853	628.634523		1131.572351	
17	747.897	7.897	-24.232	726.158	36.158	-25.426	876.180656		200.789122	
18	749.235	8.235	+2.188	701.061	11.061	-28.837		24201468	230884695	
							1504815179	190.581789	530.062077	1804.296067
							1314.233390			1314.233390
								1/2 = 657.116695		
2	765.126	5.126	+9.969	691.305	11.305	-43.027		112.699545	220.556402	
II	792.436	22.436	+31.797	693.460	3.460	+24.131		110.017620	541.403116	
III	796.923	36.923	-9.969	715.436	35.436	+42.027	353.261484		1528.685921	
19	772.467	12.467	-31.797	726.487	46.487	-24.131	1478.147139		300.841177	
							1831.408623	222.717165	521.397579	2130.089037
							1608.691458			1608.691458
								1/2 = 804.345729		

面積計算書

工
区

フ
ロ
ック

LL

計
算
者

精
算
者



備
考

→ 高柳 251 (0)
LL 11 250 (0)

点	①	②	③	④	⑤	③ × ⑤		② × ⑥		
	X	X - (定数)	X _{n-1} - X _{n+1}	Y	Y - (定数)	+	-	+	-	
3	⁻¹⁰⁰ 796.923	^{-148.770} 26.923	+ 33.317	⁻³⁷ 715.436	^{-39.710} 5.436	+ 8.508		181.111212	229.060884	
4	805.784	35.784	- 19.965	734.995	24.995	+ 32.574	489.025175		1165.628016	
21	776.958	6.958	- 33.317	749.010	38.010	- 8.508	1263.379170	59.198664		
19	772.467	2.467	19.965	726.487	16.487	- 32.574		329.162955	80.360058	
							175.404345	510.274167	139.558722	1394.688900
							1255.130178			1255.130178
								7/2 = 627.565089		
4	⁻¹⁰³ 805.784	^{-148.770} 35.784	+ 38.050	⁻³⁷ 734.995	^{-39.730} 4.995	+ 7.346		190.259750	262.869264	
5	815.008	11.008	- 24.151	755.856	25.356	+ 35.419	612.372756		1596.138352	
22	781.633	11.633	- 38.050	770.414	40.414	- 7.346	1537.752700	85.456018		
21	776.958	6.958	+ 24.151	749.010	18.010	- 35.419		434.959510	246.445402	
							2150.125456	625.019260	331.901420	1857.007616
							1525.106196			1525.106196
								7/2 = 762.553098		

面積計算書

工区

ブロック

5L

計算者

精算者



備考

5. 高野 275-1
6. " 276

点	①	②	③	④	⑤	⑥	③ × ⑤		② × ⑥	
	X	X-(定数)	X _{n-1} -X _{n+1}	Y	Y-(定数)	Y _{n-1} -Y _{n+1}	+	-	+	-
5	815.008	-148.780 35.008	+ 39.946	755.256	-39.750 53.56	- 0.565		213.950776	19.429440	
6	821.579	41.579	- 11.877	769.859	19.859	+ 22.835	235.265343			949.456465
25	903.131	23.131	- 38.497	778.191	28.191	+ 7.501	1085.268927			173.505631
23	783.082	3.082	- 21.498	777.360	27.360	- 7.777	688.185280		23.968714	
22	791.633	1.633	+ 31.926	770.414	20.414	- 22.004		651.737364	35.932532	
							1909.319550	865.688140	79.370686	1122.962096
							1043.631410			1043.631410
								72=521.815705		
6	821.579	-148.800 21.579	+ 21.378	769.859	-39.760 9.859	- 1.864		210.765702	40.223256	
7	824.509	24.509	- 18.384	776.327	16.327	+ 16.102	300.155568			394.643918
26	903.195	3.195	- 21.378	785.961	25.961	+ 1.864	564.994258			5.955480
25	903.131	3.131	+ 18.384	778.191	18.191	- 16.102		334.423344	50.415362	
							865.149826	545.189046	90.638618	400.599398
							309.960780			309.960780
								72=154.980390		

面積計算書

工区

ブロック

54

計算者

精算者



備考

7. 高野 224 (a)

点	①	②	③	④	⑤	⑥	③ × ⑤		② × ⑥	
	X	X-(定数)	X _{n-1} -X _{n+1}	Y	Y-(定数)	Y _{n-1} -Y _{n+1}	+	-	+	-
7	⁻¹²⁸ 226.509	^{-128,300} 24.509	+ 24.979	⁻³⁹ 776.827	^{-39,770} 6.327	- 1.545		158,242,133	37,866,405	
9	229.174	28.174	- 21.233	784.416	14.416	+ 19.359	306,094,928			545,420,466
27	203.276	3.276	- 24.979	795.686	25.686	+ 1.545	641,510,594			5,061,420
28	203.195	3.195	+ 21.233	785.961	15.961	- 19.359		338,899,913	61,852,005	
							947,705,522	496,942,046	99,718,410	550,481,886
							450,763,476			450,763,476
									72 = 225,381,738	

面積計算書

工区

ブロック

54

計算者

精算者



備考

8. 高野 277-1
277-3

点	①	②	③	④	⑤	⑥	③ × ⑤		② × ⑥	
	X	X-(定数)	X _{n-1} -X _{n+1}	Y	Y-(定数)	Y _{n-1} -Y _{n+1}	+	-	+	-
8	828.174	58.174	+ 45.247	784.416	4.416	+ 33.645		199810752		187264230
II	848.533	78.533	+ 4.005	829.301	49.331	+ 52.358		197570655		4111307236
IV	833.179	62.179	+ 60.410	836.774	56.774	+ 55.69	3429717340			346274851
V	788.113	18.113	- 48.303	834.900	54.900	- 1.094	2651834700		1985622	
9	783.876	13.876	- 7.354	835.680	55.680	- 7.607	409470720		131919132	
31	780.759	10.759	+ 4.635	825.393	45.393	+ 36.927	210396555		397297593	
30	779.241	9.241	- 1.736	778.753	18.753	+ 28.636	32555208		264625276	
29	779.023	9.023	+ 24.035	796.757	16.757	+ 3.067		402754495	27.673541	
27	803.276	33.276	+ 49.151	795.686	15.686	+ 12.341		770982586	410.659116	
							6733974523	571118488	1251990280	6414846315
							5162856035			5162856035
									72 = 2581.428015	

面積計算書

工区

ブロック

54

計算者

精算者



備考

9. 高柳 271

点	①	②	③	④	⑤	⑥	③ × ⑤		② × ⑥	
	X	X-(定数)	X _{n-1} -X _{n+1}	Y	Y-(定数)	Y _{n-1} -Y _{n+1}	+	-	+	-
10	781.896 ⁻⁴⁸	41.896 ^{-108.740}	-6.086	836.044 ⁻²⁹	16.044 ^{-39.820}	+12.277	97643784			544.357192
VI	772.609	32.609	-37.974	837.754	17.754	+2.248	674.190396			73.305032
VII	743.922	3.922	-29.029	838.292	18.292	-10.836	530.998468		42.498792	
11	743.580	3.580	+4.701	826.918	6.918	-11.640		32.521518	41.671200	
34	748.623	8.623	+5.035	826.652	6.652	-0.384		33.492820	3.311232	
33	748.615	8.615	+30.072	826.534	6.534	-1.175		196.490448	10.122625	
32	778.695	38.695	+33.281	825.477	5.477	+9.510		182.280037		367.984450
							1302.832648	444784823	97.603844	955.651674
							858.047825			858.047825
							× 1/2 = 429.0239125			

面積計算書

工区

ブロック

54

計算者



簿算者

備考

10. 高柳272-2

点	①	②	③	④	⑤	⑥	③ × ⑤		② × ⑥	
	X	X-(定数)	X _{n-1} -X _{n+1}	Y	Y-(定数)	Y _{n-1} -Y _{n+1}	+	-	+	-
11	742.580	2.580	-5.134	826.918	26.918	-2.784	189.537012		9.966720	
Ⅷ	743.489	2.489	-0.824	823.868	23.868	-17.445	27.907232		60.865605	
Ⅵ	742.756	2.756	-0.592	809.473	19.473	-24.893	11.528016		68.605108	
12	742.897	2.897	+26.425	798.975	8.975	-10.720		327.452875	31.055840	
30	779.241	29.241	+27.862	798.753	8.753	+26.418		331.406086		1036.668738
31	780.759	40.759	+4.635	825.293	35.293	+36.927		164.046555		1505.107523
9	783.876	43.876	+1.127	825.685	45.680	+10.651		51.938160		467.323276
10	781.896	41.896	-5.181	836.044	46.044	-10.203	238.553964		427.464888	
32	778.695	28.695	-33.281	825.477	25.477	-9.510	1180.710037		367.989450	
33	748.615	8.615	-30.072	826.534	26.534	+1.175	1098.650448			10.122625
34	748.623	8.623	-5.235	826.652	26.652	+0.284	184.542820			3.311232
							2,931.429529	874.843676	965.947611	3022.533464
							2,056.585853			2,056.585853
							X/S=1,028.2929265			

面積計算書

工区

ブロック

54

計算者

精算者



備考

11. 15777 572-1. 274-2
12. " 574-3 (8)

点	①	②	③	④	⑤	⑥	③ × ⑤		② × ⑥	
	X	X-(定数)	X _{n-1} -X _{n+1}	Y	Y-(定数)	Y _{n-1} -Y _{n+1}	+	-	+	-
12	-148 712.897	-148.740 2.897	-27.822	-39 798.975	-27.780 18.975	-18.285	507.922650		52.971645	
13	713.145	3.145	+28.716	780.579	0.579	-17.365		14.903604	54.612925	
36	771.613	31.613	+27.822	781.610	1.610	+18.285		44.793420		578.043795
35	770.967	30.967	-28.716	798.804	18.804	+17.365	539.975664			527.741955
							1067.898114	59.697024	107.584570	1115.785660
							1008.201090			1008.201090
								1/2 = 504.100545		
36	-148 771.613	-148.770 1.613	+13.762	-39 781.610	-29.780 1.610	-16.691		22.156820	26.922593	
37	784.709	14.709	+12.829	782.113	2.113	+14.908		27.107677		219.579932
28	784.442	14.442	-5.706	796.518	16.518	+14.644	94.251708			211.638648
29	779.023	9.023	-5.201	796.757	16.757	+2.235	87.153157			20.166405
30	779.241	9.241	-8.056	798.753	18.753	+2.047	151.074168			18.916327
35	770.967	0.967	-7.628	798.804	18.804	-17.143	143.436912		16.577281	
							475.915945	49.264497	43.479864	470.151312
							426.651468			426.651468
								1/2 = 213.325741		

面積計算書

工区

ブロック

54

計算者

精算者



備考

13. 高野 275-2
14. " 274-3 (10)

点	①	②	③	④	⑤	⑥	③ × ⑤		② × ⑥	
	X	X-(定数)	X _{n-1} -X _{n+1}	Y	Y-(定数)	Y _{n-1} -Y _{n+1}	+	-	+	-
	-129	-128.780		-39	-39.770					
24	784.822	4.822	+ 12.689	777.432	7.432	- 12.227		132.296648	88.372794	
25	803.131	23.131	+ 18.454	778.191	8.191	+ 18.254		141.156714		472.233274
27	803.276	23.276	- 12.689	795.686	25.686	+ 18.327	480.045654			426.579252
28	784.442	4.442	- 12.454	796.578	26.578	- 18.254	489.263172		81.084268	
							969.408826	292.053362	169.457062	848.812526
							679.355464			679.355464
								Σ = 339.677732 /		
	-129	-128.780		-39	-39.770					
14	743.207	3.207	+ 4.083	775.914	5.914	- 4.528		74.146862	14.521296	
15	747.228	7.228	+ 39.875	775.991	5.991	+ 1.446		238.891125		10.451688
23	783.082	43.082	+ 27.594	777.360	7.360	+ 1.441		276.691840		62.081162
24	784.822	44.822	+ 1.647	777.432	7.432	+ 4.783		172.240504		213.038966
27	784.729	44.729	- 41.677	782.113	12.113	+ 3.087	504.833501			138.078423
13	763.145	3.145	- 41.522	780.519	10.519	- 6.199	436.769918		17.495855	
							941.603419	551970331	34017151	423.650239
							289.633088			289.633088
								Σ = 194.816544 /		

面積計算書

工区
ブロック 54
計算者
精算者
備考 15. 高柳 274-1
16. 保留地 54-1号

点	①	②	③	④	⑤	⑥	③ × ⑤		② × ⑥	
	X	X-(定数)	X _{n-1} -X _{n+1}	Y	Y-(定数)	Y _{n-1} -Y _{n+1}	+	-	+	-
15	⁻¹⁴⁸ 747.228	^{-148.740} 7.228	-35.328	⁻³⁹ 775.991	^{-39.730} 45.991	-40.566	1624.770048		293211048	
16	747.754	7.754	+27.466	736.794	6.794	-38.831		186.604004	301.095574	
20	774.694	34.694	+35.328	737.160	7.160	+40.566		252.948480		1407.396804
23	783.082	43.082	-27.466	777.360	47.360	+38.831	1300.789760			1672.917142
							2925.559808	439.552484	594.306622	3080.313946
							2486.007324			2486.007324
								$\frac{1}{2} = 1243.003662$		
17	⁻¹⁴⁸ 747.897	^{-148.740} 7.897	+24.713	⁻³⁹ 726.158	^{-39.720} 6.158	-10.307		152.182654	81.394379	
19	772.467	32.467	+26.797	726.487	6.487	+11.002		173.832139		357.201934
20	774.694	34.694	-24.713	737.160	17.160	+10.307	424.075080			357.591058
16	747.754	7.754	-26.797	736.794	16.794	-11.002	450.028818		85.309508	
							874.103898	326.014793	166.703887	714.792992
							548.089105			548.089105
								$\frac{1}{2} = 274.0445525$		

面積計算書

工区: 54 フロック: 54 計算者: スミキリ工
 精算者: 区画街路45号線 備考: 区画街路45号線

点	①	②	③	④	⑤	⑥	③ × ⑤		② × ⑥	
	X	X-(定数)	X _{n-1} -X _{n+1}	Y	Y-(定数)	Y _{n-1} -Y _{n+1}	+	-	+	-
I	⁻¹⁴⁸ 748.263	^{-148.740} 8.263	6.039	⁻³⁹ 698.947	^{-39.690} 8.947	73.838		54.030933		610.123394
16	747.228	7.228	-5.056	775.991	85.991	76.967	434.770496			556.317476
14	743.207	3.207	-3.165	775.914	85.914	-63.796	271.917810		204.593772	
8	744.063	4.063	0.539	712.195	22.195	-67.358		11.963105	273.675554	
21	743.746	3.746	-1.239	908.556	18.556	-6.972	22.990884		26.117112	
27	742.824	2.824	-2.557	705.223	15.223	-6.403	38.925211		18.082072	
28	741.189	1.189	5.439	702.153	12.153	-6.276		66.100167	7.162164	
							768.604409	130.094205	529.930674	1166.440890
							636.510196			636.510196
									$\frac{1}{2} = 318.255098$	
I	⁻¹⁴⁸ 748.263	^{-148.740} 8.263	1.850	⁻³⁹ 698.947	^{-39.690} 8.947	-2.940		16.551950	24.393220	
1	750.085	10.085	-0.028	698.121	8.121	2.114	0.227388			21.319690
18	748.235	8.235	-1.822	701.061	11.061	0.826	20.153142			6.802110
							3.828580			3.828580
									$\frac{1}{2} = 1.914290$	

区画街路45号 318.25 + 1.91 = 320.16

計年 月 算日	計算者	検査者
---------------	-----	-----

B. NO. 54

各筆面積計算書

地番	算式	隅切	地積	摘要
1	高柳 250 (7)		657 11	/
2	" 252 (7)		804 24	/
3	" 251 (7)		627 56	/
4	" 250 (7)		762 55	/
5	" 275-1		521 81	/
6	" 276		154 98	/
7	" 224 (7)		225 28	/
8	" 277-1. 277-2		2581 42	/
9	" 271		429 02 459 92	/
10	" 272-2		1028 29 1017 28	/
11	" 272-1. 274-2		504 10	/
12	" 274-3 (7)		213 22	/
13	" 275-2		209 67	/
14	" 274-3 (7)		194 81	/
15	" 274-1		1243 00	/
16	保留地 54-1号		274 04	/
		計	10561 40	
		全面積	10561 46	
		差	- 0 06	
	空地面積		10287 26	15筆
	保留地面積		274 04	1筆
	区画、併路45号線4m		320 16	