

街区略図

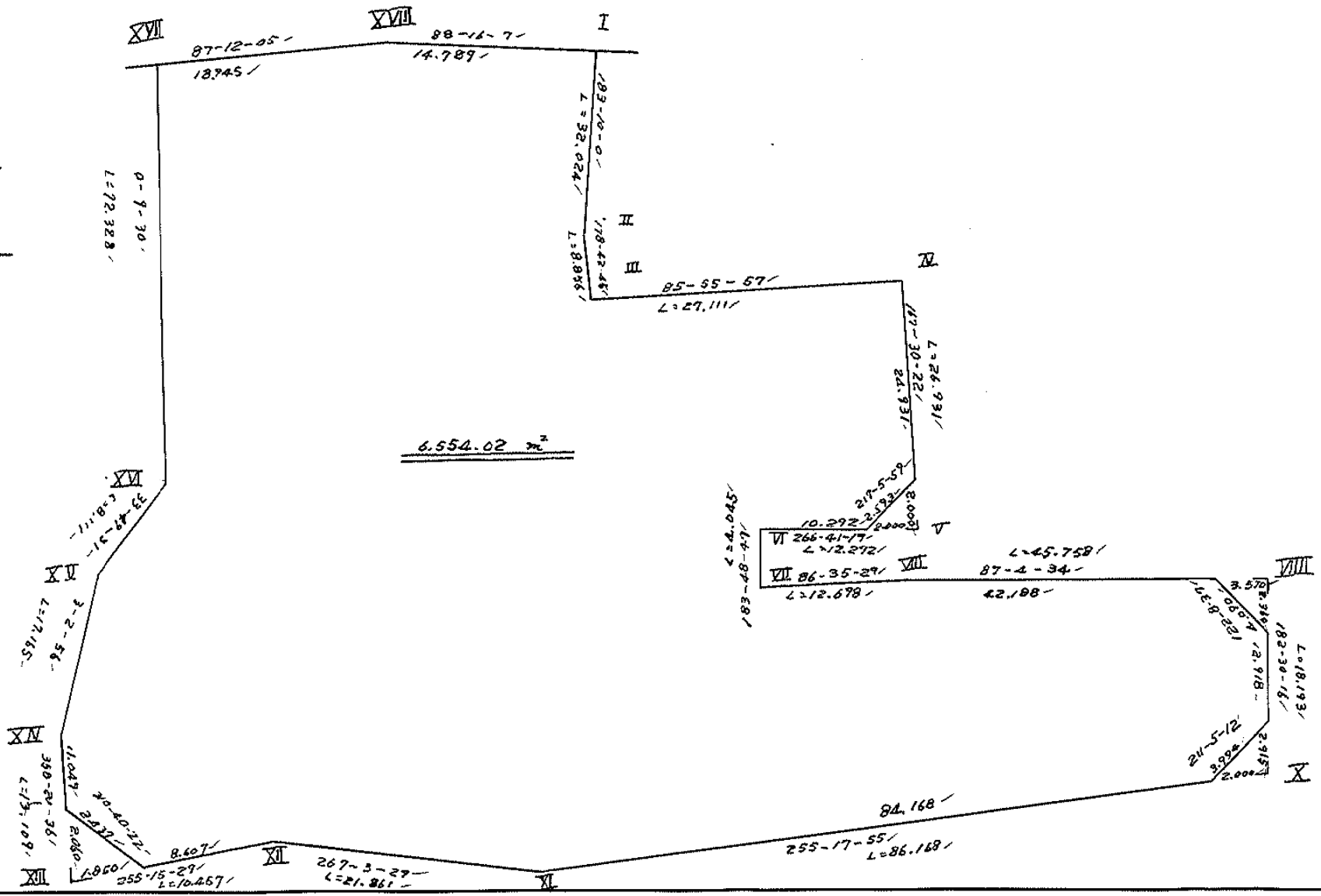
I区

ブロック

58

記入者

点検者



# 面積計算書

工区

ブロック

59

計算者

益

計算者

備考

全体

①

点	①	②	③	④	⑤	⑥	③ × ⑤		② × ⑥	
	X	X-(定数)	X <sub>n-1</sub> -X <sub>n+1</sub>	Y	Y-(定数)	Y <sub>n-1</sub> -Y <sub>n+1</sub>	+	-	+	-
I	<del>746.359</del> 746.359	<del>-148.700</del> 46.359	+ 31.528	<del>-37</del> 919.128	<del>-37.800</del> 119.128	- 13.013		2755.867584	603.269667	
II	778.334	78.334	+ 40.829	920.897	120.897	+ 1.570		4936.103613		122.984380
III	787.188	87.188	+ 6.931	920.698	120.698	- 27.242		836.557838	2375.175496	
IV	785.265	85.265	+ 24.370	893.655	93.655	- 32.869		2282.372350	2802.575285	
V	811.558	111.558	+ 27.003	887.829	87.829	+ 6.445		2371.646487		718.991310
VI	812.268	112.268	+ 4.746	900.100	100.100	+ 12.540		475.074600		1407.840720
VII	816.304	116.304	+ 3.281	900.369	100.369	- 12.407		329.310689	1442.983728	
VIII	815.549	115.549	- 3.089	887.693	87.693	- 58.375	270.883677		6745.172875	
IX	813.215	113.215	+ 15.842	841.994	41.994	- 44.904		665.268948	5083.806360	
X	831.391	131.391	+ 40.044	842.789	42.789	+ 84.142		1713.442716		11055.501520
XI	853.259	153.259	+ 22.990	926.136	126.136	+ 105.179		2899.866640		16119.628361
XII	854.381	154.381	+ 3.783	947.968	147.968	+ 31.945		559.762944		4931.701045
XIII	857.042	157.042	- 10.443	958.081	158.081	+ 10.072	1650.839883			1647.824664
XIV	843.938	143.938	- 30.245	958.460	158.460	- 0.534	4792.622700		76.862892	
XV	826.797	126.797	- 23.879	957.547	157.547	- 6.428	2762.064813		688.254116	
XVI	820.059	120.059	- 79.066	953.032	153.032	- 4.715	12099.628112		566.078185	
XVII	747.731	47.731	- 73.253	952.832	152.832	- 19.122	11195.402496		912.712182	

面積計算書

工区

ブロック

58

計算者



計算者

備考

全体

②

点	①	②	③	④	⑤	⑥	③ × ⑤		② × ⑥	
	X	X-(定数)	X <sub>n-1</sub> -X <sub>n+1</sub>	Y	Y-(定数)	Y <sub>n-1</sub> -Y <sub>n+1</sub>	+	-	+	-
	<del>149.</del> 746.806	<del>148.780</del> 46.806	- 1.372	<del>37</del> 937.910	<del>39.800</del> 133.910	- 33.704	183724520		1577.54944	
							32955/11620/	20225.274409	228744442/0	36004.332002
							13129.891792			13129.891792
				Σ切 ▽	Σ切 △	Σ切 △	Σ切 △		Σ切 △	
			6564.94 - ( 1.97 +	4.19 +	2.79 + 1.86)		Σ切 △		Σ切 △	
				6564.94	10.81	= 6554.13				

# 面地計算

画地略図

工区

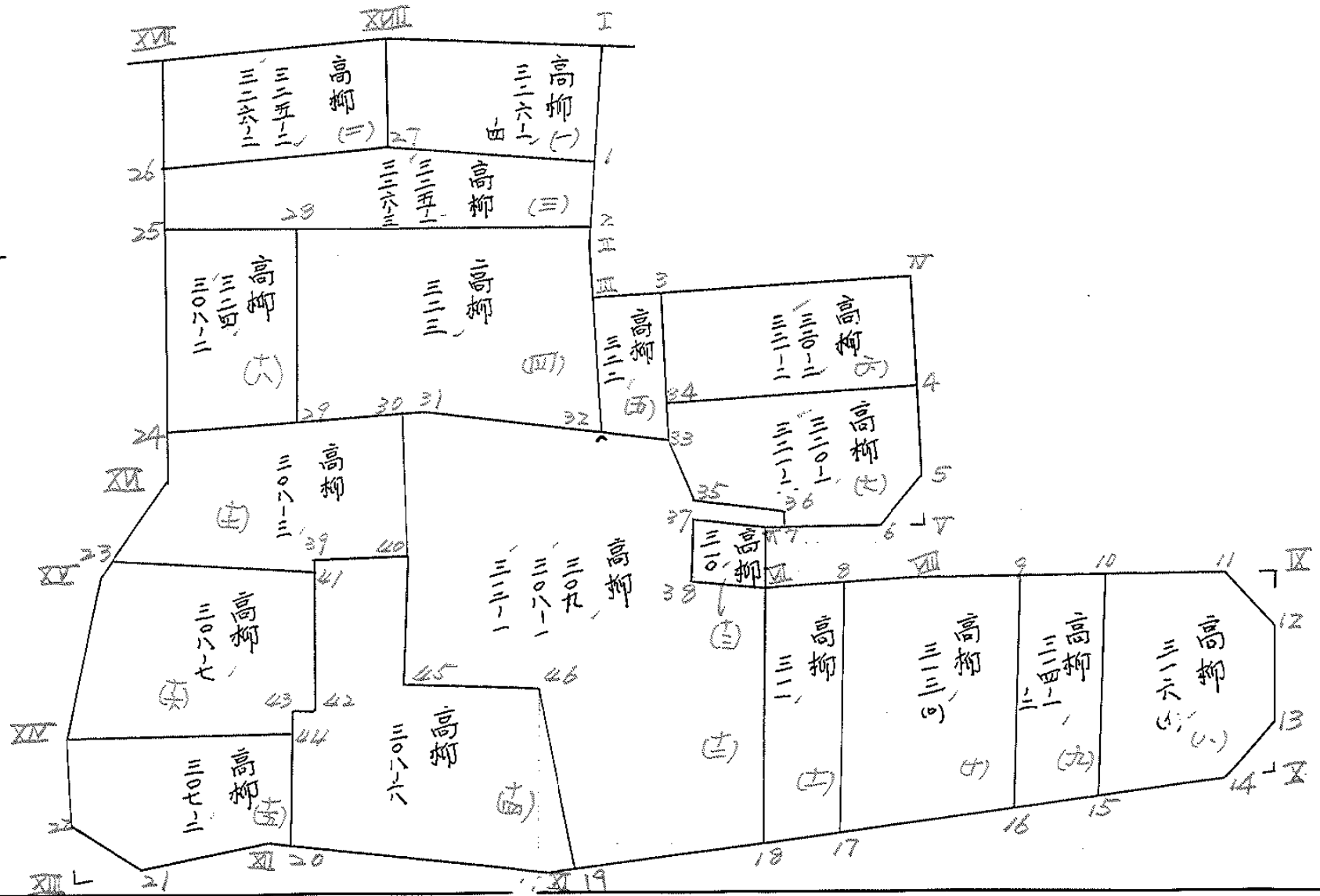
ブロック

58

記入者



点検者



# 面積計算書

工  
区

ブ  
ロ  
ック

58

計  
算  
者

監  
査  
者

特  
許  
印  
刷  
機  
関



備  
考

1. 商標 326-1, 326-2  
2. " 325-2, 326-2

点	①	②	③	④	⑤	⑥	③ × ⑤		② × ⑥	
	X	X-(定数)	X <sub>n-1</sub> -X <sub>n+1</sub>	Y	Y-(定数)	Y <sub>n-1</sub> -Y <sub>n+1</sub>	+	-	+	-
I	<sup>-148</sup> 746.359	<sup>-148.740</sup> 6.359	+ 15.502	<sup>-27</sup> 919.128	<sup>-39.910</sup> 9.128	- 13.900		141.502256	88.390100	
1	762.308	22.308	+ 16.118	920.010	10.010	+ 14.578		161.341180		325.206024
27	762.477	22.477	- 15.502	923.706	23.706	+ 13.900	367.490412			312.430300
XVII	746.806	6.806	- 16.118	923.910	23.910	- 14.578	385.381380		99.217868	
							752.871792	302.843436	187.607968	637.636324
							450.028356			450.028356
								$\frac{1}{2} = 225.014178$		
XVIII	<sup>-148</sup> 746.806	<sup>-148.740</sup> 6.806	+ 14.746	<sup>-39</sup> 923.910	<sup>-39.930</sup> 3.910	- 19.126		57.656860	130.171556	
27	762.477	22.477	+ 16.623	923.706	3.706	+ 18.965		61.604838		426.276305
26	763.429	23.429	- 14.746	952.875	22.875	+ 19.126	337.314750			448.103054
XVI	747.731	7.731	- 16.623	952.822	22.822	- 18.965	379.536336		146.618415	
							716.851086	119.261698	276.789971	874.379359
							597.589388			597.589388
								$\frac{1}{2} = 298.794694$		

# 面積計算書

工  
区

ブ  
ロ  
ック

58

計  
算  
者



精  
算  
者



備  
考

3. 高柳 325-1, 326-2

点	①	②	③	④	⑤	⑥	③ × ⑤		② × ⑥	
	X	X - (定数)	X <sub>n-1</sub> - X <sub>n+1</sub>	Y	Y - (定数)	Y <sub>n-1</sub> - Y <sub>n+1</sub>	+	-	+	-
1	<sup>-148</sup> 762,308	<sup>-148,760</sup> 2,308	+ 12,812	<sup>-39</sup> 920,010	<sup>-39,920</sup> 0,010	- 12,977		0,128120	29,950916	
2	775,289	15,289	+ 13,619	920,729	0,729	+ 32,900		9,928251		503,008100
25	775,927	15,927	- 11,860	952,910	32,910	+ 32,146	390,312600			511,989342
26	762,429	3,429	- 13,450	952,875	32,875	- 19,204	442,168750			65,850516
27	762,477	2,477	- 1,121	939,706	13,706	- 32,865	15,364426			81,406605
							847,845776	10,056371	177,208237	1014,997442
							837,789405			837,789405
							√ 418,8947025			

# 面積計算書

工  
区

ブ  
ロ  
ック

58

計  
算  
者



簡  
算  
者

備  
考

4. 1874p 223.

点	①	②	③	④	⑤	⑥	③ × ⑤		② × ⑥	
	X	X-(定数)	X <sub>n-1</sub> -X <sub>n+1</sub>	Y	Y-(定数)	Y <sub>n-1</sub> -Y <sub>n+1</sub>	+	-	+	-
2	-108 775.289	-148.770 5.289	+ 2.644	-37. 920.729	-37.920 0.729	- 20.081			1.927476	106.208409
Ⅱ	778.334	8.334	+ 11.899	920.897	0.897	- 0.031			10.673403	0.258354
Ⅲ	787.188	17.188	+ 27.281	920.698	0.698	- 0.819			19.042138	14.076972
32	805.615	35.615	+ 18.275	920.078	0.078	+ 10.982			1.425460	391.123930
31	805.463	35.463	+ 0.632	921.680	11.680	+ 20.989			7.381760	744.332907
29	806.247	36.247	- 29.773	941.067	21.067	+ 9.298	627.227791			337.024606
28	775.690	5.690	- 30.958	940.978	20.978	- 20.338	649.436924		115.723720	
							1276.664715	40.450227	236.266255	1472.481443
							1236.214433			1236.214433
									X <sup>1/2</sup> = 618.107244	



# 面積計算書

工  
区

ブ  
ロ  
ック

58

計  
算  
者

精  
算  
者

備  
考

5. 商748 222, 221-2  
6. " 220-2, 221-2

点	①	②	③	④	⑤	⑥	③ × ⑤		② × ⑥	
	X	X-(定数)	X <sub>n-1</sub> -X <sub>n+1</sub>	Y	Y-(定数)	Y <sub>n-1</sub> -Y <sub>n+1</sub>	+	-	+	-
III	-148 787.188	-148.780 7.188	-19.174	-39. 920.698	-39.700 20.698	-9.888	396.863452		71.074944	
3	786.441	6.441	+18.616	910.190	10.190	-11.201		189.697040	72.145641	
33	805.804	25.804	+19.174	909.497	9.497	+9.888		182.095478		255.149952
32	805.615	25.615	-18.616	920.078	20.078	+11.201	373.772048			286.913615
							770.635500	371.792518	143.220585	542.063567
							398.842982			398.842982
								1/2 = 199.421491		
3	-148 786.441	-148.780 6.441	-15.226	-39 910.190	-39.890 20.190	-16.032	307.412940		103.262112	
π	785.265	5.265	+11.643	893.655	3.655	-19.376		42.555165	102.014640	
4	798.084	18.084	+15.226	890.814	0.814	+16.032		12.393964		289.922688
34	800.491	20.491	-11.643	909.687	19.687	+19.376	229.215741			39.7033616
							536.628681	54.949129	205.276752	686.956304
							481.679552			481.679552
								1/2 = 240.839776		

# 面積計算書

工  
区

ブ  
ロ  
ック

58

計  
算  
者



精  
算  
者



備  
考

7. 高柳 320-1, 321-1.

点	①	②	③	④	⑤	⑥	③ × ⑤		② × ⑥	
	X	X-(定数)	X <sub>n-1</sub> -X <sub>n+1</sub>	Y	Y-(定数)	Y <sub>n-1</sub> -Y <sub>n+1</sub>	+	-	+	-
4	<sup>-148</sup> 798.084	<sup>-148.790</sup> 2.084	+ 9.115	<sup>-37</sup> 890.814	<sup>-37.880</sup> 10.814	- 21.425		98569610	173.199700	
5	809.606	19.606	+ 13.590	888.262	8.262	- 0.988		112280580	19.370728	
6	811.674	21.674	+ 2.618	889.826	9.826	+ 11.075		25.724468		240.039550
7	812.224	22.224	- 0.280	899.337	19.337	+ 9.580	5.414360			212.905920
36	811.394	21.394	- 1.265	899.006	19.406	+ 6.646	24.548590			142.184524
35	810.959	20.959	- 5.590	905.983	25.983	+ 10.091	145.244970			211.497269
33	805.804	15.804	- 10.468	909.497	29.497	+ 3.704	308.774596			58.538016
34	800.491	10.491	- 7.720	909.687	29.687	- 18.683	229.183640			196.003259
							713.166156	236.574658	388.57378	865.165279
							476.591498			476.591498
								1/2 = 238.295749		

# 面積計算書

工  
区

ブ  
ロ  
ック

58

計  
算  
者

(印)

精  
算  
者

(印)

備  
考

2. 高野 316 (1)

9. " 314-1, 314-2

点	①	②	③	④	⑤	⑥	③ × ⑤		② × ⑥	
	X	X-(定数)	X <sub>n-1</sub> -X <sub>n+1</sub>	Y	Y-(定数)	Y <sub>n-1</sub> -Y <sub>n+1</sub>	+	-	+	-
12	-148 815.573	-148.810 5.573	+ 15.081	-39. 842.097	-39.840 2.097	- 2.898			31.624857	16.150554
13	828.478	18.478	+ 16.325	842.662	2.662	+ 2.627			43.457150	48.541706
14	831.898	21.898	+ 8.189	844.724	4.724	+ 20.237			38.684836	443.149826
15	836.667	26.667	- 17.564	862.899	27.899	+ 19.190	402.198036			511.739730
10	814.334	4.334	- 23.270	863.914	23.914	- 17.339	556.478780			75.147226
11	813.397	3.397	+ 1.239	845.560	5.560	- 21.817			6.888840	74.112349
							958.676816	120.655683	165.410129	1003.431262
							838.021133			838.021133
									1/2 = 419.0105665	
10	-148 814.334	-148.810 4.334	+ 21.801	-39. 863.914	-39.860 3.914	- 11.420			85.329114	49.494280
15	836.667	26.667	+ 25.038	862.899	2.899	+ 9.296			72.585162	247.896432
16	839.372	29.372	- 21.801	873.210	13.210	+ 11.420	287.991210			335.428240
9	814.866	4.866	- 25.038	874.319	14.319	- 9.296	358.519122			45.234336
							646.510332	157.914276	94.728616	583.324672
							488.596056			488.596056
									1/2 = 244.298028	

面積計算書

工  
区

ブ  
ロ  
ック

58

計  
算  
者



精  
算  
者

備  
考

10. 11月 31日

11. " 31日

点	①	②	③	④	⑤	⑥	③ × ⑤		② × ⑥	
	X	X - (定数)	X <sub>n-1</sub> - X <sub>n+1</sub>	Y	Y - (定数)	Y <sub>n-1</sub> - Y <sub>n+1</sub>	+	-	+	-
16	-129 839.372	-118.810 29.372	+ 29.303	-39 873.210	-39.870 3.210	+ 17.173		94.062630		504.405356
17	844.169	34.169	- 23.520	891.492	21.492	+ 19.576	505.491840			668.892344
8	815.852	5.852	- 28.620	892.786	22.786	- 3.799	652.135320			22.231748
18	815.549	5.549	- 0.986	887.693	17.693	- 18.467	17.445298			102.473383
9	814.866	4.866	+ 23.823	874.319	4.319	- 14.483		102.891537		70.474278
							1175.072458	196.854167	195.179409	1173.297700
							978.118291			978.118291
							x/2 = 489.0591455			
8	-128 815.852	-118.810 5.852	+ 27.865	-39 892.786	-39.890 2.786	- 8.877		77.631890		51.948704
17	844.169	34.169	+ 30.287	891.492	1.492	+ 6.212		45.188204		212.257828
10	846.139	36.139	- 27.865	898.998	8.998	+ 8.877	250.729270			320.805903
19	816.304	6.304	- 30.287	900.369	10.369	- 6.212	314.045903			39.160448
							564.775173	122.820094	91.108652	533.063731
							441.955079			441.955079
							x/2 = 220.9775395			

面積計算書

工区

ブロック

58

計算者

縮算者

備考

12. 高柳 309, 308-1  
312-1

点	①	②	③	④	⑤	⑥	③ × ⑤		② × ⑥	
	X	X - (定数)	X <sub>n-1</sub> - X <sub>n+1</sub>	Y	Y - (定数)	Y <sub>n-1</sub> - Y <sub>n+1</sub>	+	-	+	-
18	-148 846.139	-148,800 46.139	+ 36.928	-39 898.998	-39,890 8.998	+ 25.662				
19	853.232	53.232	- 12.390	926.031	36.031	+ 27.230	4446.424090			1449.607360
46	833.749	33.749	- 19.578	926.228	36.228	+ 5.993	709.271784			202.257757
45	833.654	33.654	- 8.622	932.024	42.024	+ 6.044	362.330928			203.404776
40	825.127	25.127	- 28.069	932.272	42.272	+ 1.106	1186.532768			27.790462
30	805.585	5.585	- 19.664	933.130	43.130	- 0.592	848.108320			3.306320
31	805.463	5.463	+ 0.030	931.680	41.680	- 13.052		1.250400		71.303076
32	805.615	5.615	+ 0.341	920.078	30.078	- 22.183		10.256598124		557845
33	805.804	5.804	+ 5.344	909.497	19.497	- 14.095		104.191968		81.807380
35	810.959	10.959	+ 5.590	905.983	15.983	- 10.091		89.344970		110.587269
36	811.394	11.394	+ 1.265	899.406	9.406	- 6.646		11.898590		75.724524
7	812.224	12.224	+ 0.874	899.337	9.337	+ 0.694		8.160538		8.483455
VI	812.268	12.268	- 0.366	900.100	10.100	+ 6.627	3.696600			81.300036
37	811.858	11.858	+ 3.618	905.964	15.964	+ 6.160		57.757752		73.045280
38	815.886	15.886	+ 4.446	906.260	16.260	- 5.595		72.291960		88.882170
VII	816.304	16.304	+ 30.253	900.369	10.369	- 7.262		313.693357		118.399648

3556.364490 / 100.1242776745679323229802145

2555.240213

三和測量建設株式会社

2555.240213

$X \frac{1}{2} = 1277.6201065$

# 面積計算書

工  
区

ブ  
ロ  
ック

58

計  
算  
者



精  
算  
者

備  
考

13. 高柳 310

点	①	②	③	④	⑤	⑥	③ × ⑤		② × ⑥	
	X	X - (定数)	X <sub>n-1</sub> - X <sub>n+1</sub>	Y	Y - (定数)	Y <sub>n-1</sub> - Y <sub>n+1</sub>	+	-	+	-
VI	<sup>-148.</sup> 812.268	<sup>-148,800</sup> 12.268	+ 4.446	<sup>-39.</sup> 900.100	<sup>-39,900</sup> 0.100	- 5.595		0.444600	68.639460	
VII	816.304	16.304	+ 3.618	900.369	0.369	+ 6.160		1.335042		100.432640
38	815.886	15.886	- 4.446	906.260	6.260	+ 5.595	27.831960			88.882170
37	811.858	11.858	- 3.618	905.964	5.964	- 6.160	21.577752		73.045280	
							49.409712	1.779642	141.684740	189.314810
							47.630070			47.630070
								$\frac{1}{2} = 23.815025$		

面積計算書

工区

ブロック

58

計算者

精算者

備考

14 高柳 308-6

点	①	②	③	④	⑤	⑥	③ × ⑤		② × ⑥		
	X	X-(定数)	X <sub>n-1</sub> -X <sub>n+1</sub>	Y	Y-(定数)	Y <sub>n-1</sub> -Y <sub>n+1</sub>	+	-	+	-	
19	853.232	-148.820	+19.510	926.031	-39.920	-0.092					
21	853.259	33.259	+1.031	926.136	6.136	+19.639					
20	854.263	34.263	-13.659	945.670	25.670	+19.329	350.626530			662.269527	
43	839.600	19.600	-14.613	945.465	25.465	-1.111	372.120045			21.775600	
42	839.650	19.650	-14.742	944.559	24.559	-1.247	362.048778			24.503550	
39	824.858	4.858	-14.523	944.218	24.218	-12.287	351.718014			59.690246	
40	825.127	5.127	+8.796	932.272	12.272	-12.194		107.944512		62.518638	
45	833.654	13.654	+8.622	932.024	12.024	-6.044		103.670928		82.524776	
46	833.749	13.749	+19.578	926.228	6.228	-5.993		121.931784		82.397757	
								1436.513367	457.538250	336.467911	1315.443028
								978.975117			978.975117
									1/2 = 489	487.5585	

面積計算書

工  
区

ブ  
ロ  
ック

58

計  
算  
者



精  
算  
者

備  
考

15. 高柳 307-2

点	①	②	③	④	⑤	⑥	③ × ⑤		② × ⑥	
	X	X-(定数)	X <sub>n-1</sub> -X <sub>n+1</sub>	Y	Y-(定数)	Y <sub>n-1</sub> -Y <sub>n+1</sub>	+	-	+	-
20	<del>148</del> 854.263	<del>148,840</del> 14.263	+ 10.406	<del>59</del> 945.670	<del>39,940</del> 5.670	+ 2.442		59.002020		34.830246
21	854.381	14.381	+ 2.308	947.968	7.968	+ 10.622		18.390144		152.754982
21	856.571	16.571	+ 0.602	956.292	16.292	+ 10.172		9.807784		168.560212
22	854.983	14.983	- 12.633	958.140	18.140	+ 2.168	229.162620			32.483144
<del>22</del>	<del>843.938</del>	<del>3.938</del>	- 11.008	<del>958.460</del>	<del>18.460</del>	- 12.614	203.207680		49.673932	
44	862.975	3.975	+ 10.325	945.526	5.526	- 12.790		57.055950	50.840250	
								432.370300	144.255898	100.514182
										388.628584
								288.114402		288.114402
										X/2 = 114.057201



# 面積計算書

工  
区

ブ  
ロ  
ック

58

計  
算  
者



精  
算  
者



備  
考

16.高柳 308-7

点	①	②	③	④	⑤	⑥	③ × ⑤		② × ⑥		
	X	X-(定数)	X <sub>n-1</sub> -X <sub>n+1</sub>	Y	Y-(定数)	Y <sub>n-1</sub> -Y <sub>n+1</sub>	+	-	+	-	
XV	843.938	23.938	-17.178	958.460	18.460	+12.021	317.105880			227.758698	
XVI	826.797	6.797	-17.738	957.547	17.547	-1.313	311.248686		8.924461		
23	826.200	6.200	-0.012	957.147	17.147	-13.285	0.205764		82.367000		
41	826.785	6.785	+13.450	944.262	4.262	-12.588		57.323900	85.409580		
42	839.650	19.650	+12.815	944.559	4.559	+1.203		58.423585		23.632950	
43	839.600	19.600	+4.325	945.465	5.465	+0.967		23.636125		18.953200	
44	843.975	23.975	+4.338	945.526	5.526	+12.995		23.971788		311.555125	
								628.560330	163.355398	176.701041	441.905973
								465.204932			465.204932
									1/2=232.602466		

# 面積計算書

工  
区

ブ  
ロ  
ック

計  
算  
者



精  
算  
者



備  
考

17. 高柳 308-3.

点	①	②	③	④	⑤	⑥	③ × ⑤		② × ⑥		
	X	X-(定数)	X <sub>n-1</sub> -X <sub>n+1</sub>	Y	Y-(定数)	Y <sub>n-1</sub> -Y <sub>n+1</sub>	+	-	+	-	
23	<sup>-100</sup> 826.200	<sup>-148.800</sup> 26.200	- 6.726	<sup>-39</sup> 957.147	<sup>-39.930</sup> 27.147	+ 8.770	182.590722			229.774000	
24	820.059	20.059	- 18.957	959.032	23.032	- 4.151	436.617624		83.264909		
30	807.243	7.243	- 14.474	952.996	22.996	- 19.902	332.844104		144.150186		
40	805.585	5.585	+ 17.884	933.130	3.130	- 20.724		55.976920	115.743540		
39	825.127	25.127	+ 19.273	932.272	2.272	+ 11.088		43.788256		278.608176	
41	824.858	24.858	+ 1.658	944.218	14.218	+ 11.990		23.573444		298.047420	
	826.785	26.785	+ 1.342	944.262	14.262	+ 12.929		19.139604		346.303265	
								952.052450	142.478224	343.158635	1152.732861
								809.574226		809.574226	
								Σ = 404.787113			

# 面積計算書

工区

ブロック

59

計算者

計測者

面積

備考

18. 高野 324, 308-2

点	①	②	③	④	⑤	⑥	③ × ⑤		② × ⑥	
	X	X - (定数)	X <sub>n-1</sub> - X <sub>n+1</sub>	Y	Y - (定数)	Y <sub>n-1</sub> - Y <sub>n+1</sub>	+	-	+	-
24	-108 807.243	-148.770 37.243	-30.320	-37 952.996	-39.940 12.996	+ 11.843	394.038720			441.068249
25	775.927	5.927	-31.553	952.910	12.910	- 12.018	407.349230		71.230686	
28	775.690	5.690	+ 30.320	940.978	0.978	- 11.843		29.652960	67.386670	
29	806.267	36.267	+ 31.553	941.067	1.067	+ 12.018		33.667051		435.616446
							801.387950	63.320011	128.617356	276.685295
							732.067939			732.067939
									1/2 = 369.0339695	

# 面積計算書

工  
区

ブ  
ロ  
ック

58

計  
算  
者



精  
算  
者



備  
考

スミナリ

〃

点	①	②	③	④	⑤	⑥	③ × ⑤		② × ⑥	
	X	X-(定数)	X <sub>n-1</sub> -X <sub>n+1</sub>	Y	Y-(定数)	Y <sub>n-1</sub> -Y <sub>n+1</sub>	+	-	+	-
5	-148 809.606	-148.800 9.606	-0.116	-39 888.262	-39.880 2.262	-1.997	0.958392		19.183182	
5	811.558	11.558	+2.068	887.829	7.829	+1.564		16.190372		18.076712
6	811.674	11.674	-1.952	889.826	9.826	+0.433	19.180352			5.954842
							20.138744	16.190372	19.183182	23.131554
							2.948372			3.948372
								Y <sub>2</sub> = 1.974186		
								≒ 1.97		
21	-148 856.571	-148.850 6.571	+2.059	-39 956.292	-39.950 6.292	-0.059		12.955228		2.327689
21	857.042	7.042	-1.588	958.081	8.081	+1.848	12.832628			13.013616
22	854.983	4.983	-0.471	958.140	8.140	-1.789	2.833940			8.914587
							16.666568	12.955228	9.302276	13.013616
							3.711340			3.711340
								Y <sub>2</sub> = 1.855670		
								≒ 1.86		

# 面積計算書

工区

ブロック

58

計算者



精算者



備考

区  
区

点	①	②	③	④	⑤	⑥	③ × ⑤		② × ⑥	
	X	X-(定数)	X <sub>n-1</sub> -X <sub>n+1</sub>	Y	Y-(定数)	Y <sub>n-1</sub> -Y <sub>n+1</sub>	+	-	+	-
11	<del>-148</del> 813.297	<del>-148.813</del> 0.397	- 2.358	<del>-39</del> 845.560	<del>-39.840</del> 5.560	- 0.103	13.110480		0.040591	
区	813.215	0.215	+ 2.176	861.994	1.994	- 3.463		4.338944	0.744545	
12	815.573	2.573	+ 0.182	842.097	2.097	+ 3.566		0.381654		9.175318
							13.110480	4.720598	0.725436	9.175318
							2.389882			8.389882
								1/2 = 4.194941		
								≒ 4.19		
13	<del>-148</del> 828.478	<del>-148.820</del> 8.478	- 0.507	<del>-39</del> 862.662	<del>-39.840</del> 2.662	- 1.935	1.349634		16.404930	
区	831.391	11.391	+ 3.420	842.789	2.789	+ 2.062		9.538380		23.488242
14	831.898	11.898	- 2.913	844.724	4.724	- 0.127	13.761012		1.511046	
							15.110646	9.538380	17.915976	23.488242
							5.572266			5.572266
								1/2 = 2.786133		
								≒ 2.79		

計年 月 算日	50 5 26	計 算 者	見	檢 查 者	
---------------	---------------	-------------	---	-------------	--

B. NO. 58

各筆面積計算書

地番	算式	隅切	地積	摘要
1	高柳 326-1 326-4		225.01	
2	高柳 325-2 326-2		298.79	
3	高柳 325-1 326-3		418.89	
4	高柳 323		618.10	
5	高柳 322		199.42	
6	高柳 320-2 321-2		240.83	
7	高柳 320-1 321-1		238.29	
8	高柳 316 (イ)		419.01	
9	高柳 314-1 314-2		244.29	
10	高柳 313 (ロ)		489.05	
11	高柳 311		220.97	
12	高柳 309 308-1 312-1		1277.62	
13	高柳 310		23.81	
14	高柳 308-6		489.48	
15	高柳 307-2		144.05	
16	高柳 308-7		232.60	
17	高柳 308-3		404.78	
18	高柳 324 308-2		369.03	
		合計	6554.02	..... 18筆
		全面積	6554.13	
		差	-0.11	
	空地面積		6.554.02	