

街区略図

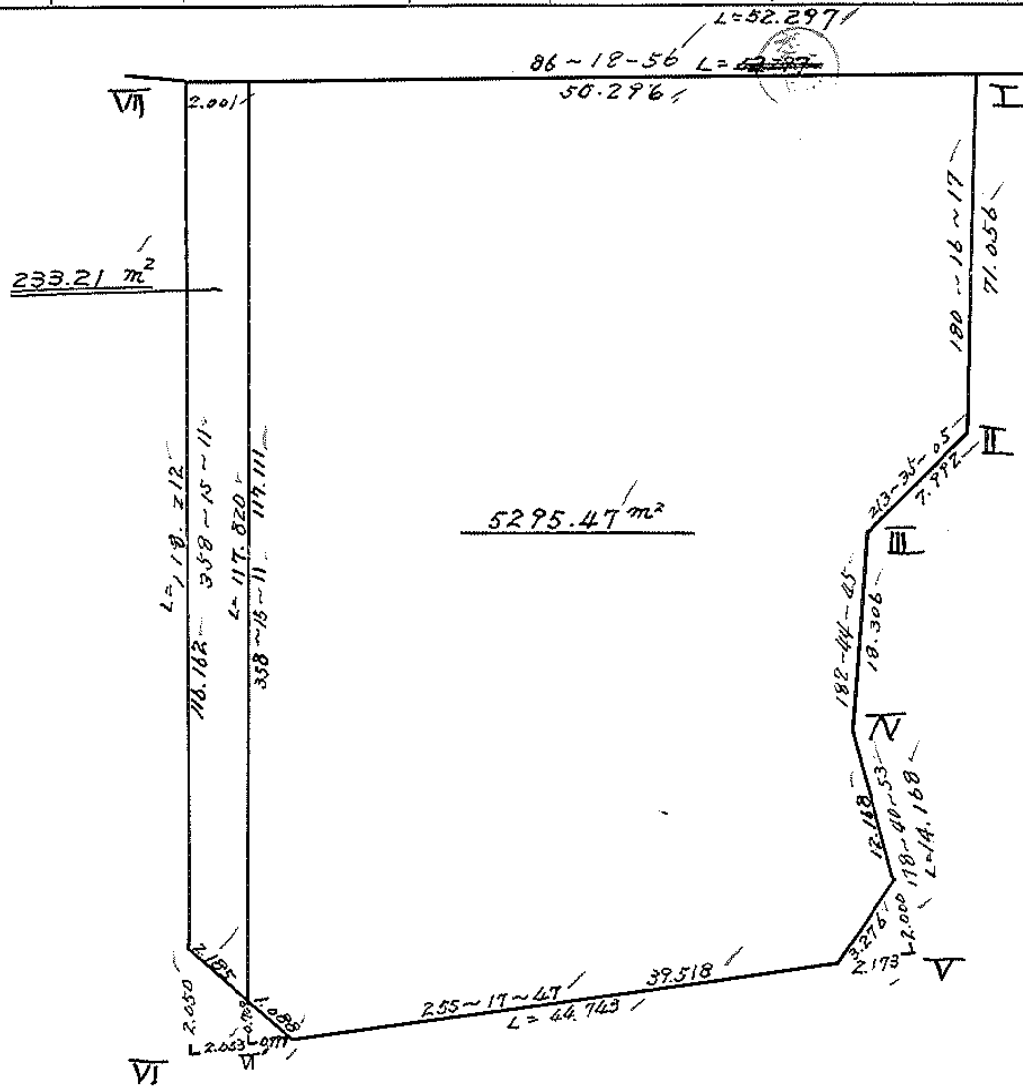
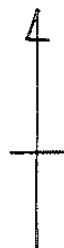
工区

ブロック

59

記入者

点検者



面積計算書

工
区

フ
ロ
ック

59

計
算
者



精
算
者



備
考

全

点	①	②	③	④	⑤	⑥	③ × ⑤		② × ⑥		
	X	X-(定数)	Xn-1-Xn+1	Y	Y-(定数)	Yn-1-Yn+1	+	-	+	-	
I	-118.747.747	-128.744. - 7.947	+67.694	-39.956.798	-39.950. - 6.798	-51.853			460.193.812	412.075.791	
II	819.002	77.002	+77.713	957.134	7.134	+4.757			554.404.542		375.812.614
III	825.660	85.660	+24.943	961.555	11.555	+5.298			288.216.365		453.826.680
IV	843.245	103.945	+32.449	962.432	12.432	+0.551			403.405.968		57.273.695
V	858.109	118.109	+25.520	962.106	12.106	+42.951			308.945.120		5.072.879.659
VI	869.465	129.465	-106.801	-40.005.383	55.383	+16.881	574.959.783				6.069.448.665
VII	751.308	11.308	-121.518	008.987	58.987	-48.585	7167.982.266		549.399.180		
							13.082.942.041	2015.155.807	961.474.971	12.029.261.213	
							11.067.786.242				11.067.786.242
									X/2=5.533	893.121	

*2番 (T π)
5.533.89-(233.21+2.11+3.10) = 5295.47 ✓
" " 238.42 ✓

画地計算

画地略図

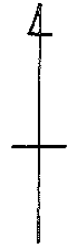
工区

ブロック

59

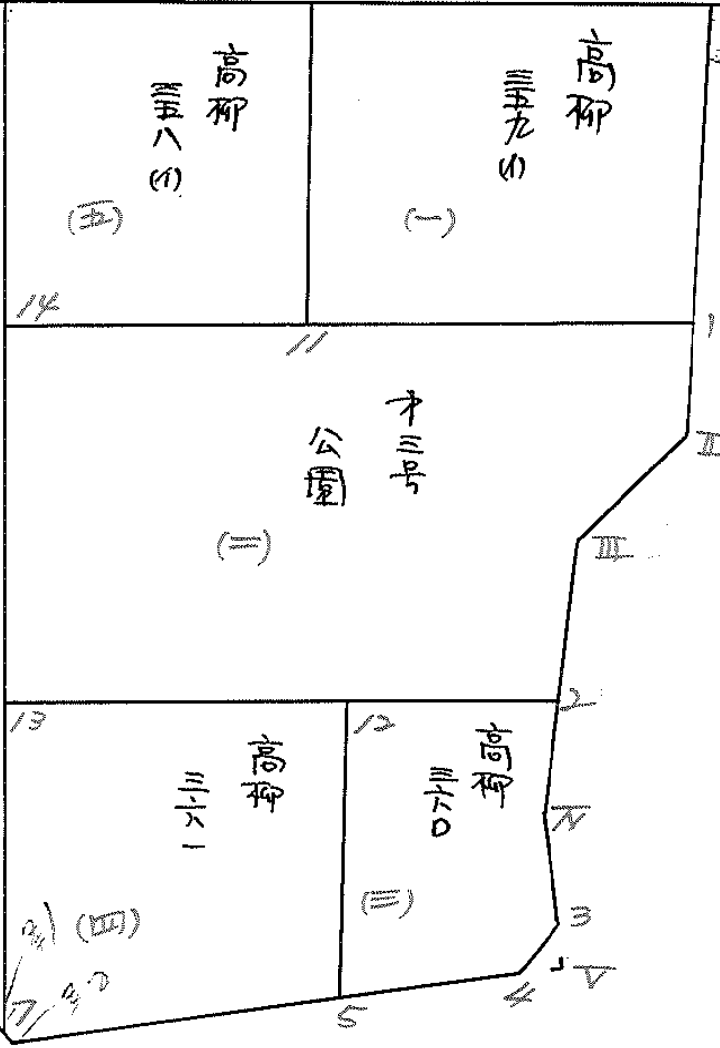
記入者

点検者



*道路幅員 13
= VII

道路幅員 12



13~12
96-19-56
0.01425P
0.747P33

面積計算書

工区

ブロック

59

計算者



精算者



備考

(1) 高柳三五九(1)

(2) 公園

点	①	②	③	④	⑤	⑥	③ × ⑤		② × ⑥	
	X	X-(定数)	X _{n-1} -X _{n+1}	Y	Y-(定数)	Y _{n-1} -Y _{n+1}	+	-	+	-
I	-148 747.947	-148.740 7.947	+ 48.462	-39 956.798	-39.950 6.798	- 27.972			329 444 676	222 293 484
1	798.226	58.226	+ 51.043	957.036	7.036	+ 26.709			259 138 548	255 158 234
11	798.990	58.990	- 48.462	983.507	44.507	+ 27.972	1623 816 234			1650.068 280
10	749.764	9.764	- 51.043	985.008	35.008	- 26.709	1786 913 344		260 786 676	
							3410 729 578	688 583 224	483 080 160	3205 226 514
							2722 146 354			2722 146 354
										$x\frac{1}{2} = 1361.073177$
I	-148 798.226	-148.790 8.226	+ 19.377	-39 957.036	-39.950 7.036	- 48.378			106 336 572	397 957 428
II	819.002	29.002	+ 27.434	957.134	7.134	+ 4.519			195 714 156	121 060 038
III	825.660	35.660	+ 18.282	961.555	11.555	+ 4.979			211 248 510	177 551 140
2	837.284	47.284	+ 12.910	962.113	12.113	+ 42.769			156 378 830	2022 289 396
13	838.570	48.570	- 37.659	-40 904.324	54.324	+ 43.399	2045 787 516			2107 889 430
14	799.625	9.625	- 40.344	905.512	55.512	- 47.288	2239 576 128		455 147 000	
							4285 363 644	699 678 068	853 104 428	4438 790 004
							2585 685 576			3585 685 576
										$x\frac{1}{2} = 1792.842 788$

面積計算書

工
区

ブ
ロ
ック

59

計
算
者



指
算
者



備
考

3

360

点	①	②	③	④	⑤	⑥	③ ×	⑤	② ×	⑥
	X	X-(定数)	X _{n-1} -X _{n+1}	Y	Y-(定数)	Y _{n-1} -Y _{n+1}	+	-	+	-
2	837.284 ^{-148.}	7.284 ^{-148, 830.0}	+6.161	862.113 ^{-39.}	2.113 ^{-39, 860.0}	-16.091		13.018193	117.206844	
N	843.845	13.845	+18.826	862.432	2.432	+0.039		45.784832		0.543855
3	856.110	26.110	+14.716	862.152	2.152	+1.776		31.668832		46.371360
4	858.661	28.661	+6.112	864.208	4.208	+15.626		25.719296		447.856786
5	862.222	32.222	-20.877	877.778	17.778	+14.315	371.151306			461.257930
12	837.784	7.784	-24.938	878.523	18.523	-15.665	461.926574		121.936360	
							833.077880	116.191153	239.143204	956.029931
							716.886727			716.886727
							x 1/2 = 358.4433635			

面積計算書

工区

ブロック

59

計算者



精算者



備考

(4)高柳 361, (5) 358(4)

点	①	②	③	④	⑤	⑥	③ × ⑤		② × ⑥	
	X	X - (定数)	X _{n-1} - X _{n+1}	Y	Y - (定数)	Y _{n-1} - Y _{n+1}	+	-	+	-
12	-118,837.784	-148,830. - 7.784	+23,652	-39,978,523	-39,970. - 8.523	-26,546			201,585,996	206,634,064
5	862,222	32,222	+30,907	977,778	7,778	+23,909			240,394,646	770,395,798
6	868,691	38,691	+6,014	-10,002,432	32,432	+25,642			195,046,048	992,114,622
7	868,236	38,236	-30,121	003,420	33,420	+1,892	1006,643,820			72,342,512
13	838,570	8,570	-30,452	004,324	34,324	-24,897	1045,234,408		213,367,290	
							2,051,878,288	637,026,690	420,001,354	1834,852,932
							1414,851,578			1414,851,578
									X ₂ = 707,425,789	
10	-118,747,764	-148,740. - 9,764	+47,811	-39,985,008	-39,980. - 5,008	-23,483			239,437,488	229,288,012
11	798,990	58,990	+49,861	983,507	3,507	+20,504			174,862,527	1209,530,910
14	799,625	59,625	-47,811	-40,005,512	25,512	+23,483	1219,754,232			1400,173,875
9	751,179	11,179	-49,861	006,990	26,990	-20,504	1345,748,390		229,214,216	
							2565,502,622	414,300,915	458,502,228	2,609,704,835
							2151,202,607			2151,202,607
									X ₂ = 1075,601,3035	

面積計算書

工
区

ブ
ロ
ック

計
算
者



精
算
者



備
考

陽切 V, VI

点	①	②	③	④	⑤	⑥	③ × ⑤		② × ⑥	
	X	X-(定数)	X _{n-1} -X _{n+1}	Y	Y-(定数)	Y _{n-1} -Y _{n+1}	+	-	+	-
3	⁻¹⁴⁸ 856.110	^{-148.850} 6.110	-0.552	⁻³⁹ 962.152	^{-39.960} 2.152	-2.102	1.187 904		12.843 220	
V	858.109	8.109	+2.551	962.106	2.106	+2.056		5.372 406		16.672 104
4	858.661	8.661	-1.999	964.208	4.208	+0.046	2.411 792			0.398 406
							9.599 696	5.372 406	12.843 220	17.070 510
							4.227 290			4.227 290
								×1/2 = 2.1136 45		
6	⁻¹⁴⁸ 868.691	^{-148.860} 8.691	+1.229	⁻⁴⁰ 002.432	^{-40.000} 2.432	+1.963		2.988 928		17.060 433
VI	869.465	9.465	-1.275	005.383	5.383	+3.013	6.863 325			28.518 045
8	867.416	7.416	-1.229	005.445	5.445	-1.963	6.691 905		14.557 608	
7	868.236	8.236	+1.275	003.420	3.420	-3.013		4.360 500	24.815 068	
							13.555 230	7.349 428	39.372 676	45.578 478
							6.205 802			6.205 802
								×1/2 = 3.102 901		

面積計算書

工
区

ブ
ロ
ック

59

計
算
者



繪
算
者



備
考

水路 10号線 ZM

点	①	②	③	④	⑤	⑥	③ × ⑤		② × ⑥	
	X	X-(定数)	X _{n-1} -X _{n+1}	Y	Y-(定数)	Y _{n-1} -Y _{n+1}	+	-	+	-
	-148	-148.750		-40	-40.000					
9	751.179	1.179	+116.928	006.990	6.990	-5.567		817.326720	6.563493	
7	868.236	118.236	+116.237	003.420	3.420	-1.545		397.530540	182.674620	
8	867.416	117.416	-116.928	005.445	5.445	+5.567	636.672960			653.654872
Ⅶ	751.308	1.308	-116.237	008.987	8.987	+1.545	1044.621919			2.020860
							1681.294879	1214.857260	187.238113	655.675732
							466.437619			466.437619
								x _{1/2} = 233.2188095		

