

街区略図

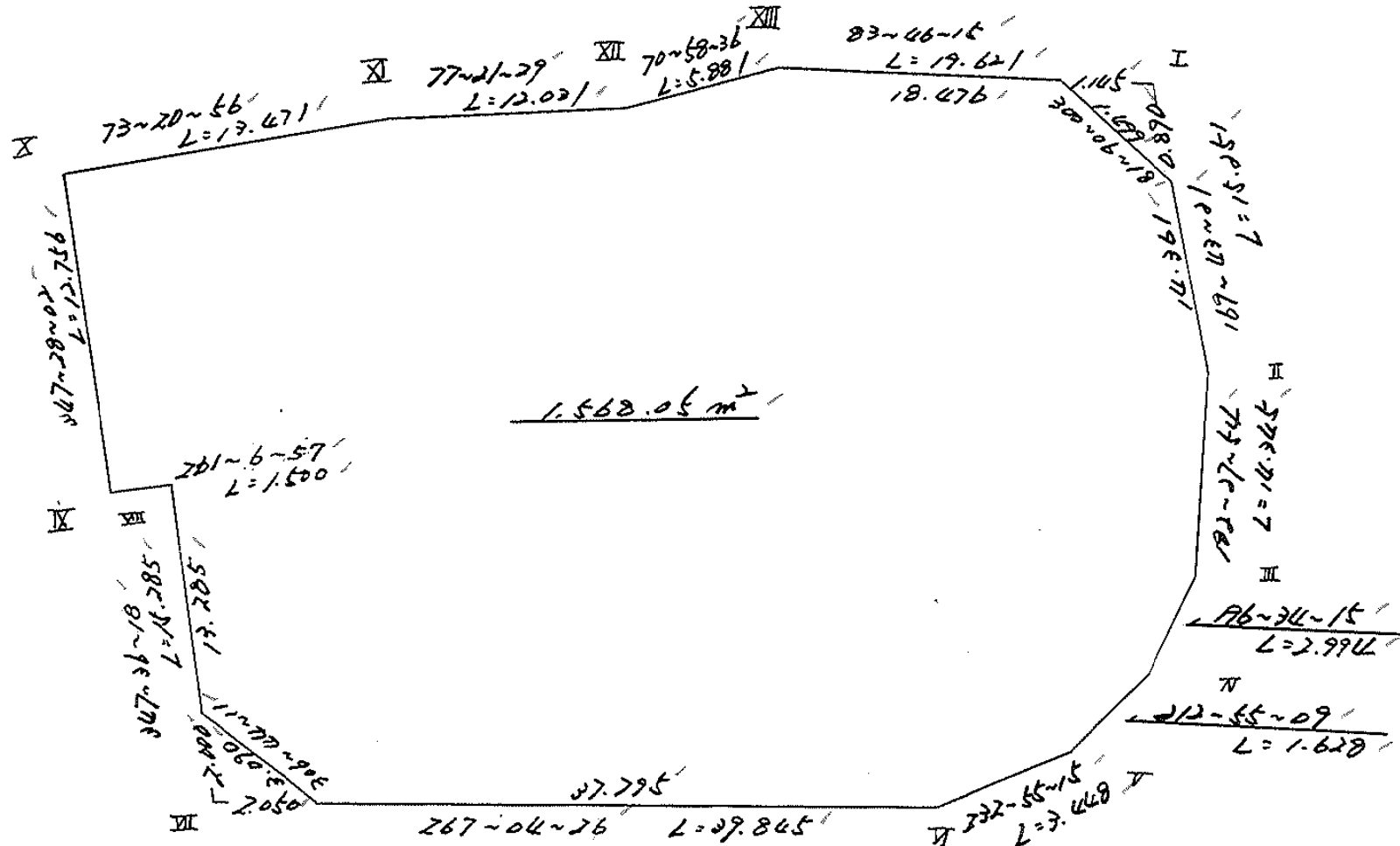
工区

ブロック

58-2

記入者

点検者



面積計算書

工区

ブロック

58-2

計算者



精算者



備考

全体

点	①	②	③	④	⑤	⑥	③ × ⑤		② × ⑥	
	X	X-(定数)	X _{n-1} -X _{n+1}	Y	Y-(定数)	Y _{n-1} -Y _{n+1}	+	-	+	-
I	-148,773.668	-148,770 3.668	+ 12.877	-39, 841.616	-39,830 11.616	- 22.226		149.579232		81.524968
II	788.674	18.674	+ 29.338	838.895	8.895	- 2.104		260.961510		39.290086 48.551826
III	803.006	33.006	+ 17.202	839.512	9.512	+ 1.471		163.625424		
IV	805.876	35.876	+ 4.237	840.366	10.366	+ 1.739		43.920742		62.388364
V	807.243	37.243	+ 3.446	841.251	11.251	+ 3.636		38.770946		135.415548
VI	809.322	39.322	+ 4.113	844.002	14.002	+ 42.544		57.590226		1,672,915168
VII	811.356	41.356	- 12.895	883.795	53.795	+ 43.074	693.686525			1,781.368344
VIII	796.427	26.427	- 14.697	887.076	57.076	+ 4.763	838.845972			125.871801
IX	796.659	26.659	- 12.220	888.558	58.558	+ 4.250	715.578760			113.300750
X	784.207	14.207	- 16.312	891.326	61.326	- 10.138	1000.349712			144.030566
XI	780.347	10.347	- 6.493	878.420	48.420	- 24.645	314.391060			255.001815
XII	777.714	7.714	- 4.550	866.681	36.681	- 17.299	166.898550			133.444486
XIII	775.797	5.797	- 4.046	861.121	31.121	- 25.065	125.915566			145.301805
							3,855.666145	714.448080	798.593736	3,939.811801
		1570.60 - (0.51+2.02) =		1568.07			3,141.218065			3,141.218065
								x1/2 = 1,570.6090325		

面地計算

画地略図

工区

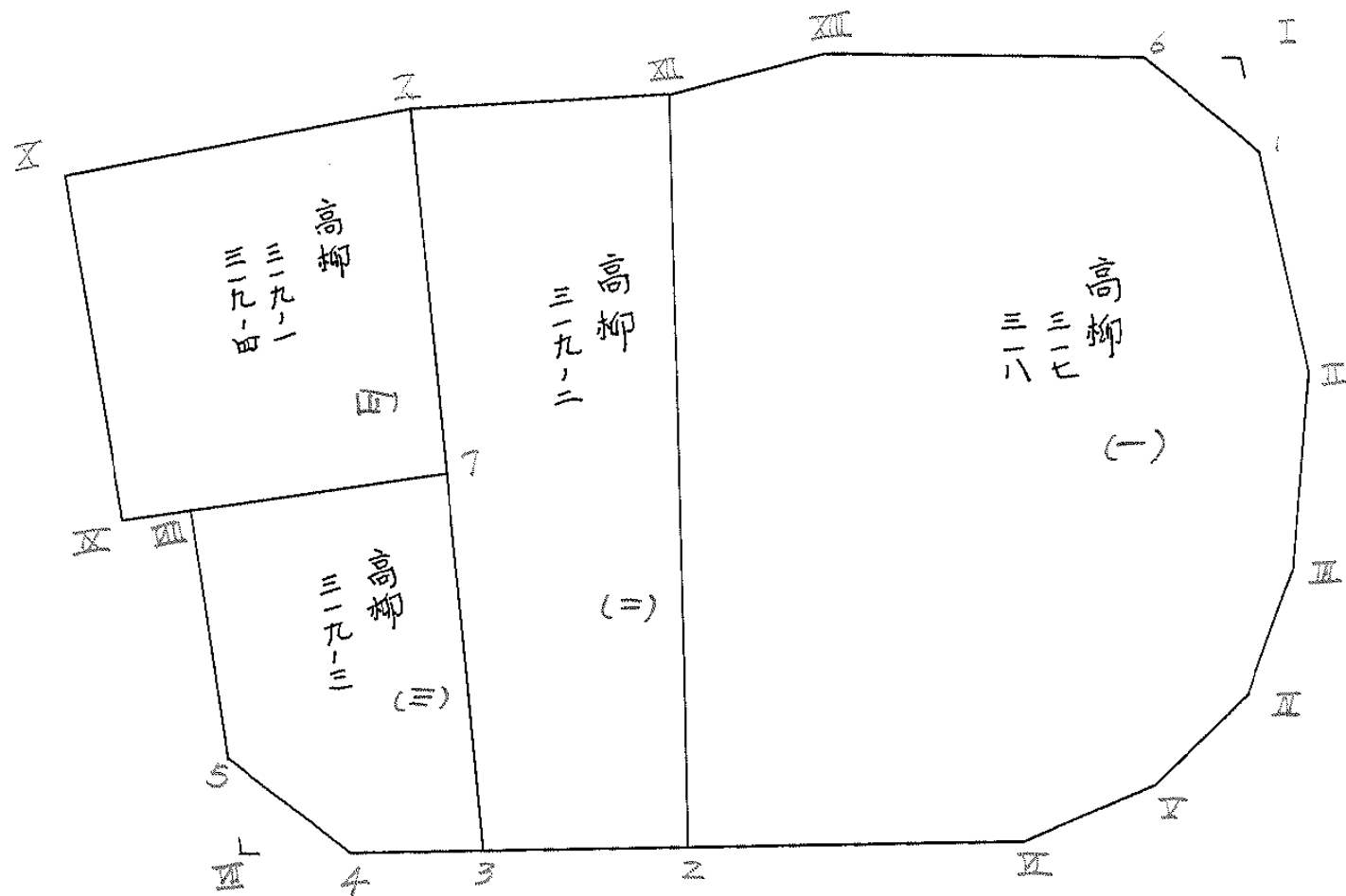
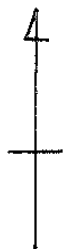
ブロック

58-2

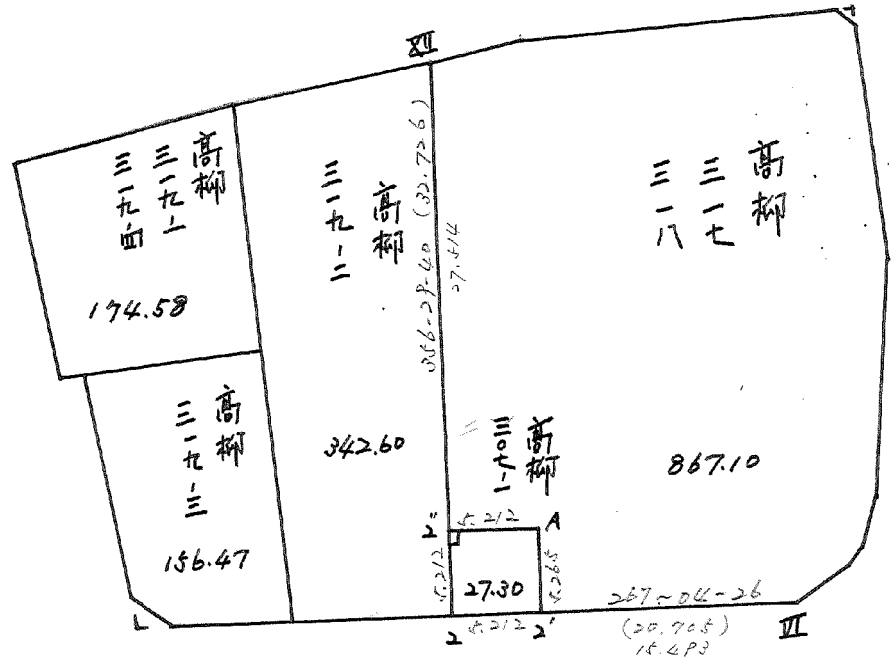
記入者



点検者



BND. 58-2



面積計算書

工
区

フ
ロ
ック

58-2

計
算
者



精
算
者



備
考

1. 高脚 317.319

点	①	②	③	④	⑤	⑥	③ × ⑤		② × ⑥	
	X	X - (定数)	X _{n-1} - X _{n+1}	Y	Y - (定数)	Y _{n-1} - Y _{n+1}	+	-	+	-
	-108	-148.770		-29	-39.830					
I	774.544	4.544	+14.892	841.657	11.457	-3.859		70.523074	17.525296	
II	788.674	19.674	+29.462	838.895	8.895	-1.965		253.169490	36.320930	
III	803.006	33.006	+17.202	839.512	9.512	+1.471		163.625424	49.541826	
IV	805.876	35.876	+4.237	840.366	10.366	+1.739		43.920742	52.398364	
V	807.243	37.243	+3.446	841.251	11.251	+3.636		39.770946	125.465548	
VI	809.322	39.322	+3.136	844.002	14.002	+23.429		43.910272	921.275138	
VII	810.379	40.379	-31.608	864.680	34.680	+22.679	1076.165640		915.755341	
VIII	777.714	7.714	-34.582	866.681	36.681	-3.559	1269.502342		27.654126	
IX	775.797	5.797	-3.922	861.121	31.121	-23.927	122.056562		138.704919	
X	773.792	3.792	-1.253	847.754	12.754	-19.664	15.980762		74.565889	
							2522.705106	713.899948	394.581059	2083.386217
							1789.905158			1789.905158
								1/2 = 874.402579		

分筆あり

面積計算書

工
区

ブ
ロ
ック

58-2

計
算
者

精
算
者

備
考

点	①	②	③	④	⑤	⑥	③ × ⑤		② × ⑥	
	X	X-(定数)	Xn-1-Xn+1	Y	Y-(定数)	Yn-1-Yn+1	+	-	+	-
	-148.	-148.800.0		-39.	-39.850.0					
2	810.379	10.379	- 4.936	864.680	14.680	+ 5.524	72.460480			57.333596
2"	805.177	5.177	- 5.521	864.999	14.999	- 4.983	82.809479		25.279291	
A	804.858	4.858	+ 4.936	859.797	9.797	- 5.524		48.357992	26.835592	
2'	810.113	10.113	+ 5.521	859.475	9.475	+ 4.983		52.311475		49.381779
								155.269959	100.669467	106.715375
								54.600492		54.600492
										27.300246
								896.40 - 27.30 = 869.10		

面積計算書

 工
区

 フ
ロ
ック

58-2

 計
算
者

 精
算
者

 備
考

(2) 高柳

319-2

点	①	②	③	④	⑤	⑥	③ × ⑤	② × ⑥
	X	X-(定数)	X _{n-1} -X _{n+1}	Y	Y-(定数)	Y _{n-1} -Y _{n+1}	+	-
Ⅰ	-148. 780.347	-148.770 10.347	-33.158	-37. 878.420	-39.850 28.420	-7.646	942.350360	79.113162
Ⅱ	777.714	7.714	+30.032	866.681	16.681	-13.740	800.963792	105.990360
2	810.379	40.379	+33.158	864.680	14.680	+7.646	486.759440	308.737834
3	810.872	40.872	-30.032	874.327	24.327	+13.740	730.588444	561.581280
							1672.938824	987.723232
							685.215592	185.103522
								870.319114
								685.215592
							$\times \frac{1}{2} = 342.607796$	

面積計算書

工
区

フ
ロ
ック

58-2

計
算
者



精
算
者



備
考

(3)高柳319-3

点	①	②	③	④	⑤	⑥	③ × ⑤		② × ⑥		
	X	X-(定数)	X _{n-1} -X _{n+1}	Y	Y-(定数)	Y _{n-1} -Y _{n+1}	+	-	+	-	
VIII	-148 796.427	-148,790 6.427	- 14.631	-39 887.076	-39,870 17.076	- 7.738	249.838956			49.732126	
7	794.772	4.772	+ 14.445	876.486	6.486	- 12.749		93.690270	60.838228		
3	810.872	20.872	+ 16.479	874.327	4.327	+ 5.262		71.304633		109.828464	
4	811.251	21.251	- 1.469	881.748	11.748	+ 9.897		17.257812		210.321147	
5	809.403	19.403	- 14.824	884.224	14.224	+ 5.328	210.856576			103.379184	
							477.953344	164.994903	110.570354	423.528795	
							312.958441			312.958441	
								X/2=	156.4792205		

面積計算書

	工 区		フ ロ ック	58-2	計 算 者		符 算 者		備 考		(4) 高柳 319-1 319-4
点	①	②	③	④	⑤	⑥	③ × ⑤		② × ⑥		
	X	X-(定数)	Xn-1-Xn+1	Y	Y-(定数)	Yn-1-Yn+1	+	-	+	-	
Ⅰ	-148 784.207	-148,780 4.207	-16.312	-39 891.328	-39,870 21.328	-10.138	347.869712		42.650566		
Ⅱ	780.347	0.347	+ 10.565	878.420	8.420	- 14.840		88.957300	5.149480		
7	794.772	14.772	+ 16.312	876.486	6.486	+ 10.138		105.799632		149.758536	
Ⅲ	796.659	16.659	- 10.565	888.558	18.558	+ 14.840	196.06527			247.219560	
							543.934982	194.756932	42.800048	396.978096	
							349.178050			349.178050	
								x/2 = 174.589025			

面積計算書

工
区

フ
ロ
ック

58-2

計
算
者



精
算
者



備
考

隅切 I Ⅷ

点	①	②	③	④	⑤	⑥	③ × ⑤		② × ⑥	
	X	X-(定数)	X _{n-1} -X _{n+1}	Y	Y-(定数)	Y _{n-1} -Y _{n+1}	+	-	+	-
		-148.770.-			-39.840.-					
6	-148.773.772	3.292'	+0.876	-39.842.754	2.754'	+0.159	2.412.504			0.602.928
I	773.668	3.668'	+0.752	841.616	1.616'	-1.297		1.215.232	4.757.396	
1	774.544	4.544'	+0.124	841.457	1.457'	+1.138		0.180.668		5.171.072
							2.412.504	1.395.900	4.757.396	5.774.000
							1.016.604			1.016.604
								½ 0.508.302		
		-148.800.-			-39.880.-					
5	-148.809.403	9.403'	-0.105	-39.884.224	4.224'	-2.047	0.443.520		19.247.941	
4	811.251	11.251'	+1.953	881.740	1.740'	-0.429		3.413.844	4.826.679	
Ⅷ	811.356	11.356'	-1.848	883.795	3.795'	+2.476	7.013.160			28.117.456
							7.456.680	3.413.844	24.074.620	28.117.456
							4.042.836			4.042.836
								½ = 2.021.418		

