

街区略図

工区

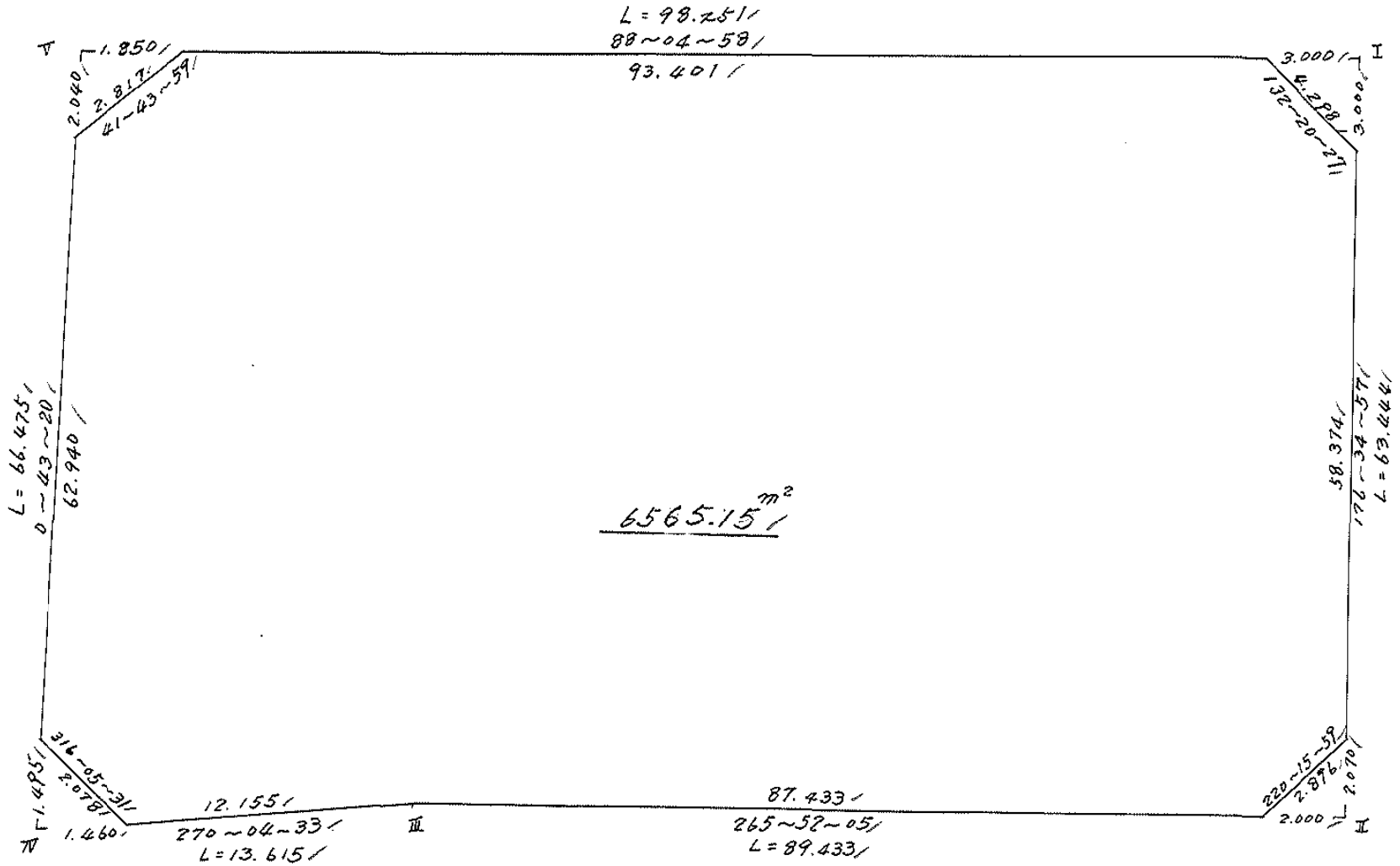
ブロック

35

記入者



点検者



画地計算

画地略図

工区

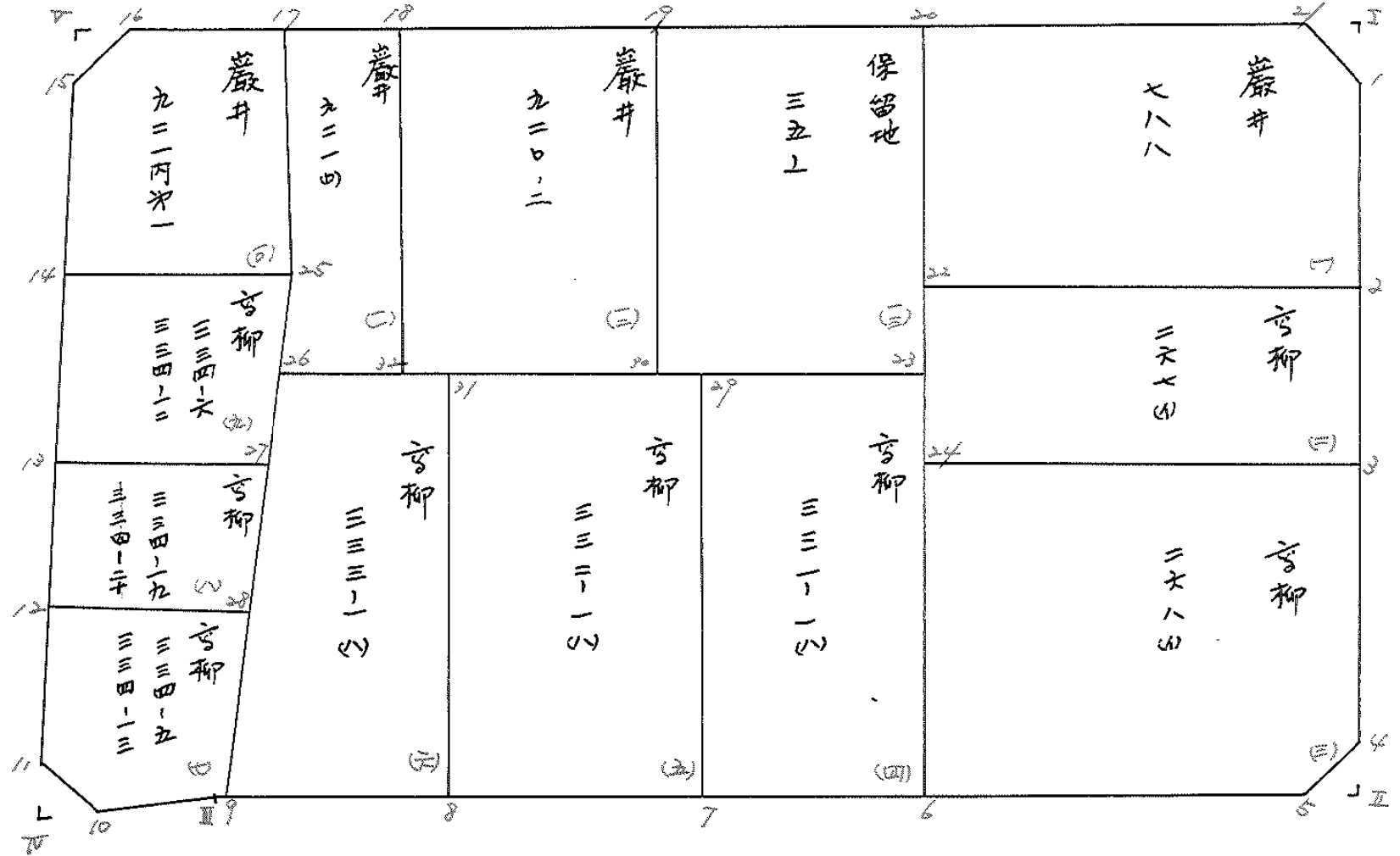
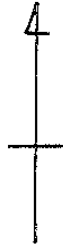
ブロック

35

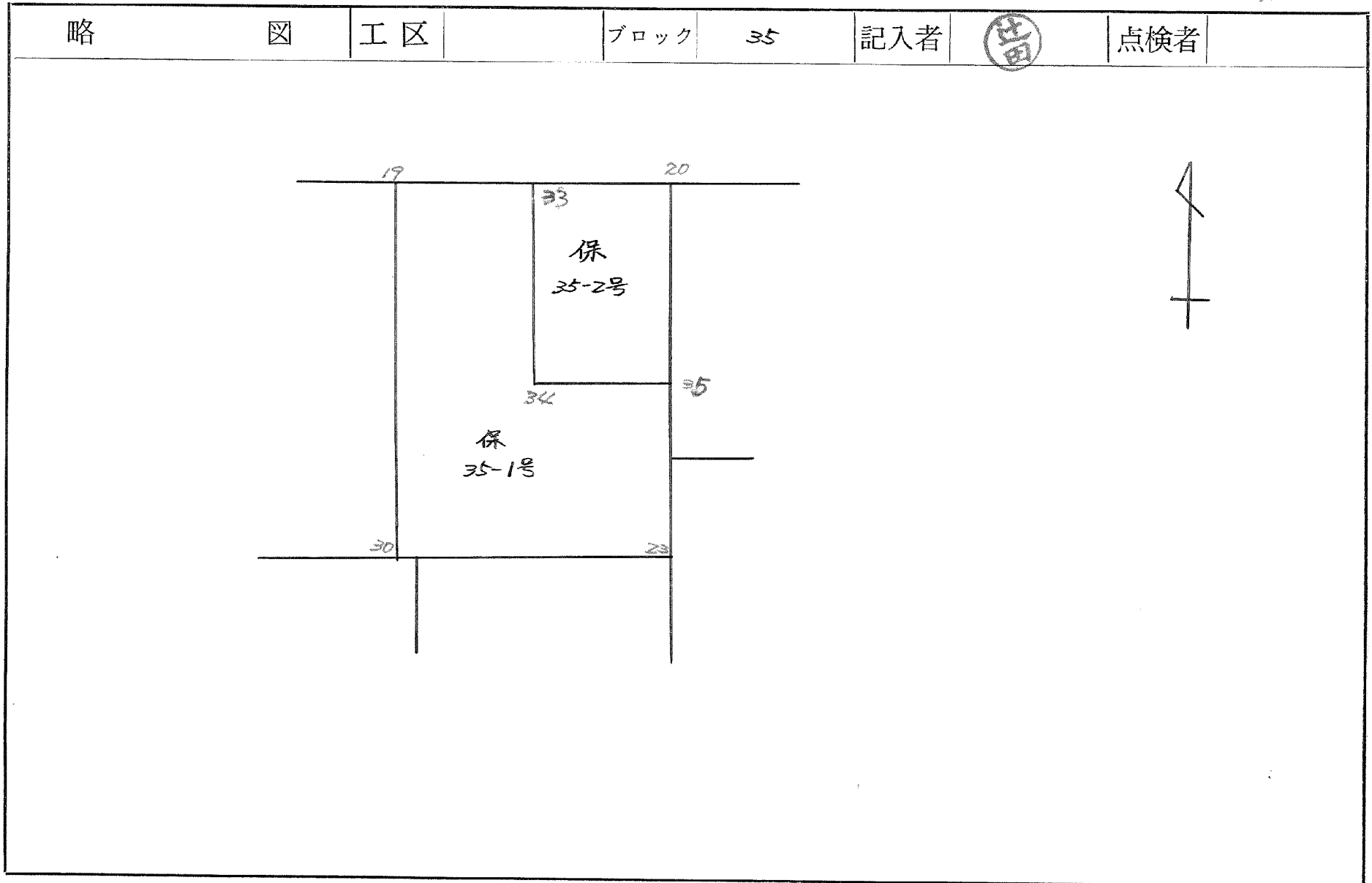
記入者



点検者



S.53-4.6



面積計算書

工
区

ブ
ロ
ック

35

計
算
者



精
算
者



備
考

①
788.

②
267.43

点	①	②	③	④	⑤	⑥	③ × ⑤		② × ⑥	
	X	X-(定数)	X _{n-1} -X _{n+1}	Y	Y-(定数)	Y _{n-1} -Y _{n+1}	+	-	+	-
1	-148,615.611	-148,610 4.611	+20.870	-39,805.22	-39,800 5.227	-4.250		109.087490	28.096750	
2	-148,634.586	24.586	+19.282	-39,804.154	4.154	+37.924		80.097428		932.399464
22	-148,635.893	25.893	-19.683	-39,843.151	43.151	+39.692	849.341133			1027.744956
20	-148,614.903	4.903	-22.177	-39,843.846	43.846	-34.747	972.372742		170.364541	
21	-148,613.716	3.716	+1.708	-39,808.404	8.404	-38.619		14.354032	143.508204	
							1,821.713875	203.538950	341.969495	1960.144420
							1,618.174925			1,618.174925
							$X \frac{1}{2} = 809.0874625$			
2	-148,634.586	-148,630 4.586	+12.663	-39,804.154	-39,800 4.154	-39.832		52.602102	182.669552	
3	-148,642.556	18.556	+15.290	-39,803.719	3.319	+38.534		50.747510		715.036904
24	-148,649.876	19.876	-12.663	-39,842.688	42.688	+39.832	540.558144			791.700832
22	-148,635.893	5.893	-15.290	-39,843.151	43.151	-38.534	659.778790		227.080862	
							1,200.336934	103.349612	409.750414	1506.737736
							1,096.987322			1,096.987322
							$X \frac{1}{2} = 548.493661$			

面積計算書

工区

ブロック

25

計算者

精算者

備考

③ 高柳 262(4) ② 高柳 331-1(1)

点	①	②	③	④	⑤	⑥	③ × ⑤		② × ⑥	
	X	X-(定数)	X _{n-1} -X _{n+1}	Y	Y-(定数)	Y _{n-1} -Y _{n+1}	+	-	+	-
		148.600			39.800					
3	-148,648.556	- 48.456	+ 25.005	-39,803.919	- 3.319	- 40.941		82.991595	1987.931196	
4	-148,674.881	- 74.881	+ 28.535	-39,801.747	- 1.747	+ 0.300		49.850645		22.464300
5	-148,677.091	- 77.091	+ 4.961	-39,803.619	- 3.619	+ 39.949		17.953859		3.079.708359
6	-148,679.842	- 79.842	- 27.215	-39,841.696	- 41.696	+ 39.069	1134.756640			3.119.347098
24	-148,649.876	- 49.876	- 31.226	-39,842.688	- 42.688	- 38.377	1.335.536768		1.914.091252	
							2.470.293408	150.796099	3.902.022448	6.221.519757
							2.319.497309			2.319.497309
										$Y_2 = 1.159.7486545$
		148.600			39.800					
6	-148,679.842	- 79.842	+ 36.165	-39,841.696	- 41.696	+ 15.620		1507.935840		1247.132040
7	-148,681.054	- 81.054	- 34.394	-39,858.473	- 58.473	+ 17.954	2011.120362			1.455.243516
29	-148,645.448	- 45.448	- 36.165	-39,859.650	- 59.650	- 15.620	2.157.242250		709.897760	
23	-148,644.889	- 44.889	+ 34.394	-39,842.853	- 42.853	- 17.954	1.473.88608		805.937106	
							4.168.362612	2.981.821922	1.515.834866	2.702.375556
							1.186.540690			1.186.540690
										$Y_2 = 593.270345$

面積計算書

工区

ブロック

25

計算者



精算者

備考

⑤

⑥

5797 332-1 (V)

5797 333-1 (V)

点	①	②	③	④	⑤	⑥	③ × ⑤		② × ⑥	
	X	X-(定数)	X _{n-1} -X _{n+1}	Y	Y-(定数)	Y _{n-1} -Y _{n+1}	+	-	+	-
7	-148,681.054	^{148.600} - 81.054	+ 36.897	-39,858.473	^{39.800} - 58.473	+ 16.697				
8	-148,682.345	- 82.345	- 35.010	-39,876.347	- 76.347	+ 19.071	2672.908470			1570.401495
31	-148,646.044	- 46.044	- 36.897	-39,877.544	- 77.544	- 16.697	3861.140968		768.796668	
29	-148,645.448	- 45.448	+ 35.010	-39,859.650	- 59.650	- 19.071		2088.346500	866.738808	
							5.534.049438	4.245.824781	1.635.535476	292.760.133
							1.288.224657			1.288.224657
										$\frac{1}{2} = 644.112325$
8	-148,682.345	^{148.600} - 82.345	+ 37.329	-39,876.347	- 76.347	+ 13.036				
9	-148,683.373	- 83.373	- 35.888	-39,890.580	- 90.580	+ 13.593	3250.735040			1073.449420
26	-148,646.457	- 46.457	- 37.329	-39,889.940	- 89.940	- 13.036	3357.370260		605.613452	
31	-148,646.044	- 46.044	+ 35.888	-39,877.544	- 77.544	- 13.593		2782.899072	625.276092	
							6.608.105320	5.632.856225	1.231.489544	2206.738609
							975.249065			975.249065
										$\frac{1}{2} = 487.6245325$

面積計算書

工区

ブロック

25

計算者



精算者

備考

①
334-5
334-13

②
334-19
334-20

点	①	②	③	④	⑤	⑥	③ × ⑤		② × ⑥	
	X	X-(定数)	X _{n-1} -X _{n+1}	Y	Y-(定数)	Y _{n-1} -Y _{n+1}	+	-	+	-
		-148,660			-39,890					
9	-148,683.373	23.373	+16.682	-39,890.580	0.580	+0.534		9.675560		12.481182
Ⅸ	-148,683.391	23.391	+0.002	-39,890.825	0.825	+12.400		0.001650		790,048400
10	-148,683.375	23.375	-1.513	-39,902.980	12.980	+13.596	19,638740			317,806500
11	-148,681.878	21.878	-17.038	-39,904.425	14.421	+1.245	245,704998			27,238110
12	-148,666.337	6.337	-15.169	-39,904.225	14.225	-14.130	215,779025		89,541810	
28	-148,666.709	6.709	+17.036	-39,890.291	0.291	-13.645		4.957476	91,544305	
							481,122763	14,634686	181,086115	647,574192
							466,488077			466,488077
							x 1/2 = 233,2440385			
12	-148,666.337	16.337	-12.044	-39,904.225	14.225	+13.787	171,325900			225,238219
13	-148,654.665	4.665	-11.412	-39,904.078	14.078	-14.138	160,658136		65,953770	
27	-148,654.925	4.925	+12.044	-39,890.087	0.087	-13.787		1.047828	67,900975	
28	-148,666.709	16.709	+11.412	-39,890.291	0.291	+14.138		3.320892		236,231842
							331,984036	4,368720	133,854745	461,470061
							327,615316			327,615316
							x 1/2 = 163,807658			

面積計算書

工
区

フ
ロ
ック

45

計
算
者



精
算
者

備
考

⑨

334-6
334-12

⑩

334-6
334-12

点	①	②	③	④	⑤	⑥	③ × ⑤		② × ⑥	
	X	X - (定数)	X _{n-1} - X _{n+1}	Y	Y - (定数)	Y _{n-1} - Y _{n+1}	+	-	+	-
		-148,630			-39,880					
13	-148,654.665	24.665	-17.646	-39,904.078	24.078	+13.772	424,880,388			339,686,380
14	-148,637.279	7.279	-17.138	-39,902.859	23.859	-14.293	408,895,542		104,038,747	
25	-148,637.527	7.527	+17.646	-39,889.785	9.785	-13.772		172,666,110	103,661,844	
27	-148,654.725	24.925	+17.138	-39,890.087	10.087	+14.293		172,871,006		356,253,025
							833,775,930	345,537,116	207,700,591	695,939,405
							488,238,814			488,238,814
							x 1/2 = 244,119,407			
		-148,610			-39,880					
15	-148,618.943	8.943	-20.438	-39,903.628	23.628	-2.106	482,909,064		18,833,958	
16	-148,616.841	6.841	-2.479	-39,901.753	21.753	-13.127	53,925,687		89,801,807	
17	-148,616.464	6.464	+20.686	-39,890.501	10.501	-11.968		217,223,686	77,361,152	
25	-148,637.527	27.527	+20.815	-39,889.785	9.785	+13.358		203,674,775		367,705,666
14	-148,637.279	27.279	-18.584	-39,902.859	23.859	+13.843	443,395,656			377,623,197
							980,230,407	420,898,461	185,996,917	745,328,863
							559,331,946			559,331,946
							x 1/2 = 279,665,973			

面積計算書

工
区

ブ
ロ
ック

25

計
算
者



精
算
者



備
考

④

昭和 92/01 昭和 92-2

⑫

点	①	②	③	④	⑤	⑥	③ × ⑤		② × ⑥	
	X	X - (定数)	X _{n-1} - X _{n+1}	Y	Y - (定数)	Y _{n-1} - Y _{n+1}	+	-	+	-
17	-148,616.464	^{-148,610} 6.464	-21.278	-39,890.50	^{-39,880} 10.501	-5.734	223,440,278		37,064,576	
18	-148,616.249	6.249	+29.763	-39,884.05	4.051	-7.458		120,569,913	46,605,042	
32	-148,646.227	36.227	+30.208	-39,883.043	3.043	+5.889		91,922,944		213,340,803
26	-148,646.457	36.457	-8.700	-39,889.940	9.940	+6.742	86,447,800			245,793,094
25	-148,637.527	27.527	-29.993	-39,889.785	9.785	+0.561	293,481,505			15,442,647
							603,399,783	212,492,857	83,669,618	474,576,544
							390,906,926			390,906,926
							$\times \frac{1}{2} = 195,453,463$			
18	-148,616.249	^{-148,610} 6.249	-30.728	-39,884.05	^{-39,860} 24.051	-21.393	739,039,128		133,684,857	
19	-148,615.499	5.499	+29.233	-39,861.650	1.650	-23.402		48,234,450	128,687,598	
30	-148,645.482	35.482	+30.728	-39,860.649	0.649	+21.393		19,942,472		759,066,426
22	-148,646.227	36.227	-29.233	-39,883.043	23.043	+23.402	673,616,019			847,784,254
							1,412,655,147	68,176,922	262,372,455	1,606,850,680
							1,344,478,225			1,344,478,225
							$\times \frac{1}{2} = 672,239,112.5$			

面積計算書

工
区

ブ
ロ
ック

26

計
算
者

(印)

精
算
者

(印)

備
考

⑫
滞留地 25-1

分筆あり

点	①	②	③	④	⑤	⑥	③ × ⑤		② × ⑥	
	X	X-(定数)	X _{n-1} -X _{n+1}	Y	Y-(定数)	Y _{n-1} -Y _{n+1}	+	-	+	-
19	-148,615.499	-148,610 5.499	-30.579	-39,261.650	-39,840 21.650	-16.803	662,035,350		92,399,697	
20	-148,614.903	4.903	+29.390	-39,243.846	3.846	-18.797		113,033,940	92,161,691	
23	-148,644.889	34.889	+30.579	-39,242.853	2.853	+16.803		87,241,887		586,239,867
20	-148,645.482	35.482	-29.390	-39,260.649	20.649	+18.797	606,874,110			666,955,154
							1,268,909,460	200,275,827	184,561,388	1,253,195,021
							1,068,633,633			1,068,633,633
							× 1/2 = 534,316,816.5			

面積計算書

工区

ブロック

35

計算者



精算者

備考

保 35-2号

保 35-1号

点	①	②	③	④	⑤	⑥	③ × ⑤		② × ⑥	
	X	X-(定数)	X _{n-1} -X _{n+1}	Y	Y-(定数)	Y _{n-1} -Y _{n+1}	+	-	+	-
20	-148,614,903	-148,610 4,903	+14,228	-39,843,846	-39,840 3,846	-9,566		54,720,888	46,902,098	
35	629,435	19,435	+14,836	843,365	3,365	+8,604		49,923,140		167,218,740
34	629,739	19,739	-14,228	852,450	12,450	+9,566	177,138,600			188,823,274
23	615,207	5,207	-14,228	852,931	12,931	-8,604	191,844,316		44,801,028	
							388,982,916	104,644,028	91,703,126	356,040,014
							264,338,888			264,338,808
							$\times \frac{1}{2} = 132,169,444 \approx 132,16$			
33	-148,615,207	-148,610 5,207	+14,240	-39,852,931	-39,840 12,931	-9,200		184,137,400	47,904,400	
34	629,739	19,739	+14,228	852,450	12,450	-9,566		177,138,600	188,823,274	
35	629,435	19,435	+15,150	843,365	3,365	-9,597		50,979,750	186,517,695	
23	644,889	34,889	+16,013	842,853	2,853	+16,285		45,685,089		569,167,365
30	645,448	35,448	-29,390	859,650	19,650	+18,797	577,513,500			666,316,056
19	615,499	5,499	-30,241	861,650	21,650	-6,719	654,717,650		36,947,781	
							1232,231,150	457,940,879	460,193,150	1234,493,421
							774,290,271			774,290,271
							$\times \frac{1}{2} = 387,145,135.5 \approx 387,14$			
(保 35-1号)		534.31	-132.16 =	402.15						

面積計算書

工
区

ブ
ロ
ック

25

計
算
者



精
算
者



備
考

陽功工 Ⅱ

点	①	②	③	④	⑤	⑥	③ × ⑤		② × ⑥	
	X	X - (定数)	X _{n-1} - X _{n+1}	Y	Y - (定数)	Y _{n-1} - Y _{n+1}	+	-	+	-
I	-148,613.616	^{-148,610} 3.616	+ 2.895	-39,805.406	^{-39,800} 5.406	-3.177		15.650370	11.488032	
1	-148,616.611	6.611	+ 0.100	-39,805.227	5.227	+ 2.998		0.522700		19.819778
2	-148,613.716	3.716	- 2.995	-39,808.404	8.404	+ 0.179	25.169980			0.665164
							25.169980	16.173070	11.488032	20.484942
							8.996910			8.996910
							x 1/2 = 4.498455			
4	-148,674.821	^{-148,670} 4.881	- 0.144	-39,801.747	^{-39,800} 1.747	- 1.995	0.251568		9.737595	
Ⅱ	-148,676.947	6.947	+ 2.210	-39,801.624	1.624	+ 1.872		3.589040		13.004784
5	-148,677.091	7.091	- 2.066	-39,803.619	3.619	+ 0.123	7.476854			0.872193
							7.728422	3.589040	9.737595	13.876977
							4.139382			4.139382
							x 1/2 = 2.069691			

面積計算書

工
区

フ
ロ
ック

35

計
算
者



精
算
者



備
考

陽功 田 丁

点	①	②	③	④	⑤	⑥	③ × ⑤		② × ⑥	
	X	X-(定数)	X _{n-1} -X _{n+1}	Y	Y-(定数)	Y _{n-1} -Y _{n+1}	+	-	+	-
		-148,680			-39,900					
10	-148,683.375	3.375	+1.495	-39,902.980	2.980	+0.019		7.455100		0.064125
10	-148,683.375	3.373	-1.497	-39,904.440	4.440	+1.441	6.646680			4.860493
11	-148,681.878	1.878	+0.002	-39,904.421	4.421	-1.460		0.008842	2.741880	
							6.646680	4.463942	2.741880	4.924618
							2.182738			2.182738
							X _{1/2} = 1.091369			
		-148,610			-39,900					
15	-148,618.943	8.943	+0.062	-39,903.628	3.628	+1.849		0.224936		16.535607
15	-148,616.903	6.903	-2.102	-39,903.602	3.602	-1.875	7.571404		12.943125	
16	-148,616.841	6.841	+2.040	-39,901.753	1.753	+0.026		3.576120		0.177866
							7.571404	3.801056	12.943125	16.713473
							3.770348			3.770348
							X _{1/2} = 1.885174			

計年
月
算日

計
算
者



檢
查
者

B.NO. 35

各筆面積計算書

地番	算式	隅切	地積	摘要
1	巖井 788		809 08	
2	高柳 267 (1)		548 49	
3	" 268 (1)		1159 74	
4	" 331-1 (1)		593 27	
5	" 332-1 (1)		644 11	
6	" 333-1 (1)		487 62	
7	" 334-5 334-13		233 24	
8	" 334-19 334-20		163 80	
9	" 334-6 334-12		244 11	
10	巖井 92-1 (1) 21		279 66	
11	" 92-1 → 92 (1)		195 45	
12	" 920-2		672 23	
13	保留地 35-1		534 31	
	隅切 I	4 50		
	" II	2 07		
	" IV	1 09		
	" V	1 29		
	計	9 55	6565 11	
	全体		6565 15	
	差引		- 0 04	
	宅地		6,030 30	12筆
	保留地		534 31	1筆