

街区略図

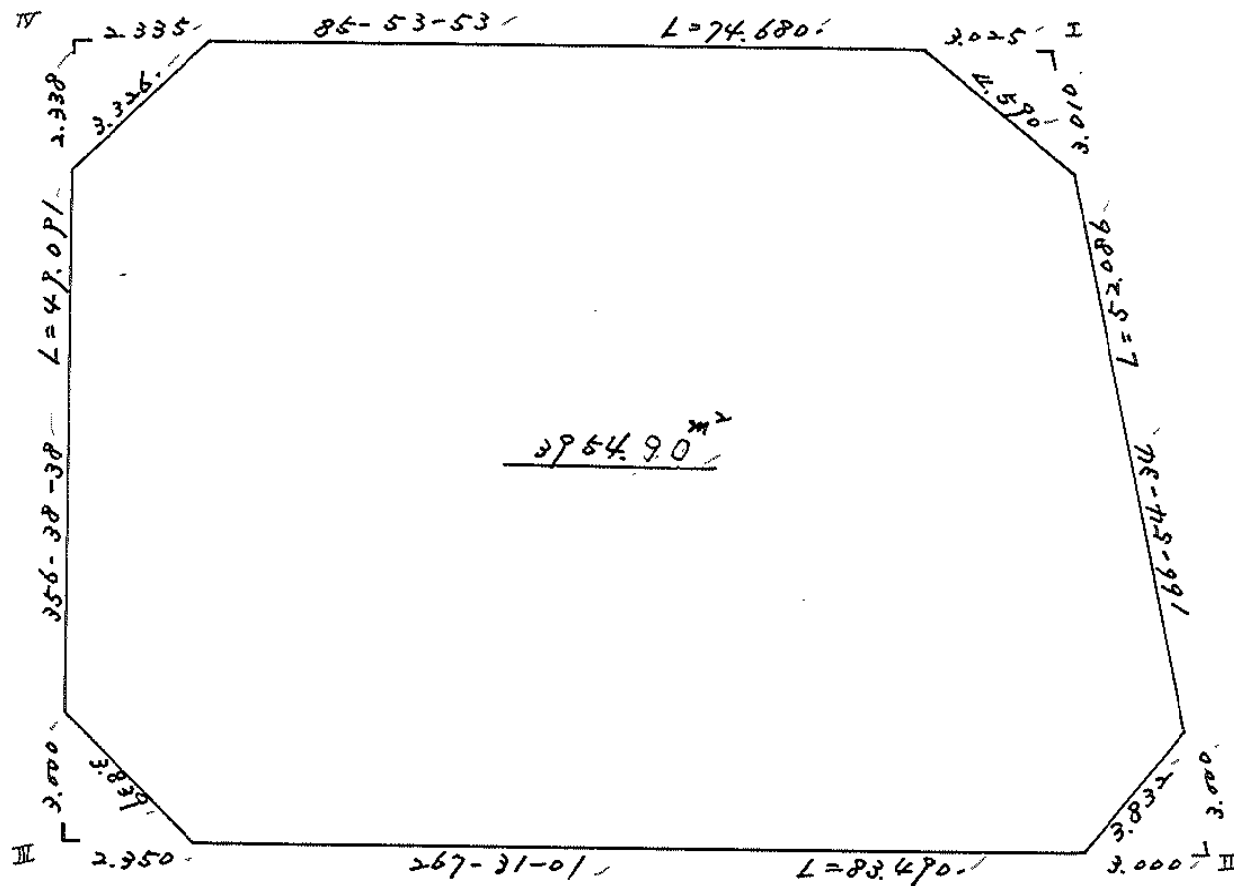
工区

ブロック

37

記入者

点検者



地 計 算

画地略図

工区

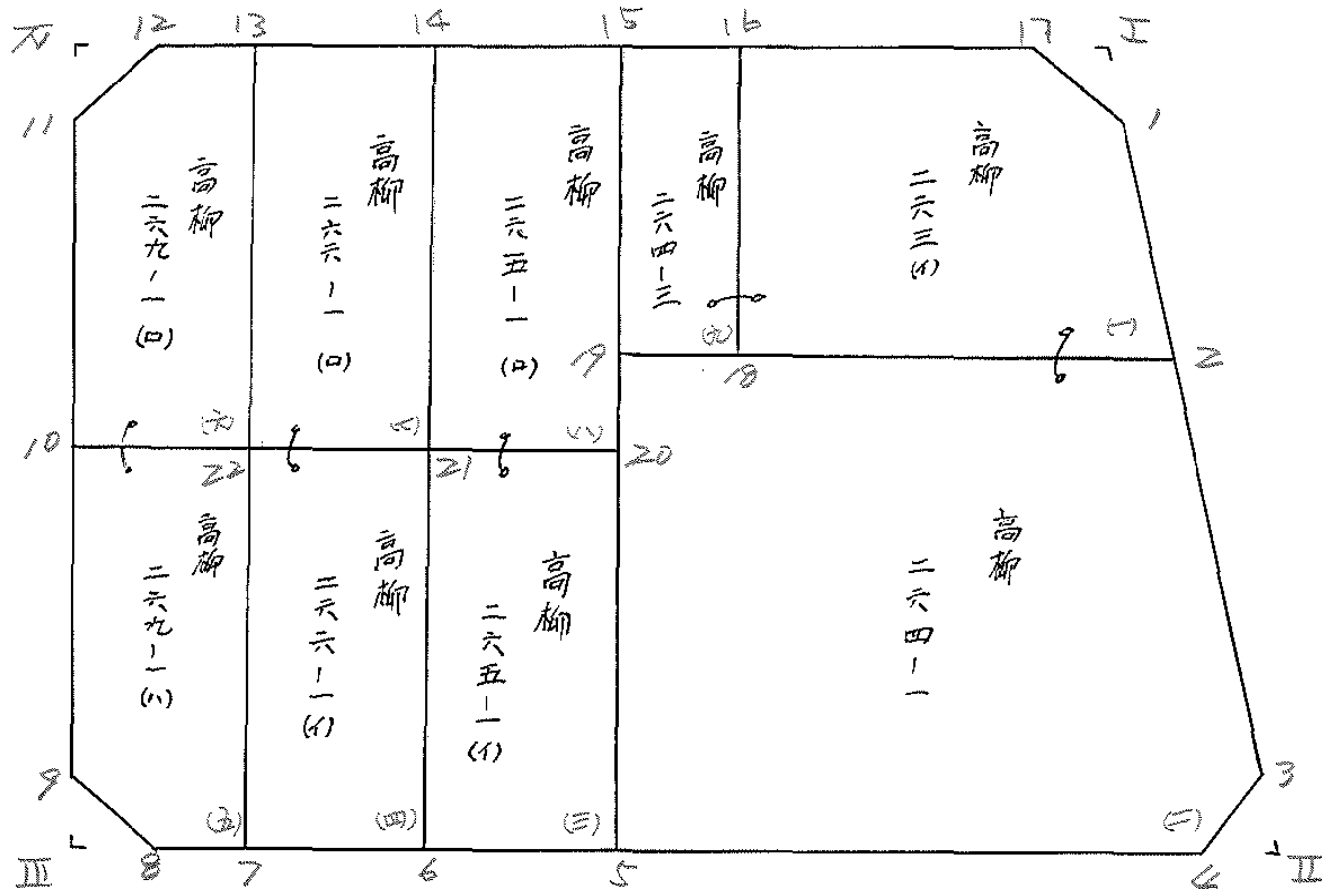
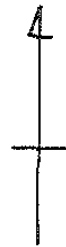
ブロック

37

記入者



点検者



面積計算書

工区

ブロック

27

計算者



精算者



備考

(1)

(2)

高柳 263 (1)

高柳 264-1

点	①	②	③	④	⑤	⑥	③ × ⑤		② × ⑥	
	X	X-(定数)	X _{n-1} -X _{n+1}	Y	Y-(定数)	Y _{n-1} -Y _{n+1}	+	-	+	-
		148.600			39.700					
1	-148,677.866	- 79.866	+ 19.783	-39,717.480	- 17.480	- 7.669		345.806840	612.492354	
2	-148,696.933	- 96.933	+ 19.063	-39,713.511	- 13.511	+ 29.608		257.560193		2869.992264
18	-148,698.929	- 98.929	- 17.841	-39,747.088	- 47.088	+ 34.746	340.097009			3437.387034
16	-148,679.092	- 79.092	- 21.779	-39,748.257	- 48.257	- 25.908	1050.989203		2049.115536	
17	-148,677.150	- 77.150	+ 0.774	-39,721.180	- 21.180	- 30.777		16.393320	2374.445550	
							1291.086211	619.760353	5036.053440	6307.377278
							1271.325858			1271.325858
								1/2 = 635.662929		
		148.600			39.700					
2	-148,696.933	- 96.933	+ 25.559	-39,713.511	- 13.511	- 44.356		345.327649	4299.560148	
3	-148,724.744	- 124.744	+ 30.863	-39,707.044	- 7.044	- 4.149		217.398972	517.562856	
4	-148,727.796	- 127.796	+ 4.797	-39,709.362	- 9.362	+ 42.565		44.909514		51139.636740
5	-148,729.541	- 129.541	- 28.611	-39,749.609	- 49.609	+ 42.038	1419.363099			5445.644550
19	-148,699.185	- 99.185	- 32.608	-39,751.400	- 51.400	- 36.098	1576.051200		3580.380130	
							3095.414299	607.636125	8397.503134	10.885291298
							2487.778164			2487.778164
								1/2 = 1243.889082		

面積計算書

工区

ブロック

27

計算者



精算者



備考

(3)

(4)

877 265-1 (1) 877 266-1 (1)

点	①	②	③	④	⑤	⑥	③ × ⑤		② × ⑥	
	X	X-(定数)	X _{n-1} -X _{n+1}	Y	Y-(定数)	Y _{n-1} -Y _{n+1}	+	-	+	-
		148.700			39.700					
20	-148,703.948	- 3.948	+ 24.731	-39,751.119	- 51.119	- 16.068		1264.223789	63.436464	
5	-148,729.541	- 29.541	+ 26.225	-39,747.609	- 49.609	+ 13.062		1300.996025		385.864542
6	-148,730.173	- 30.173	- 24.731	-39,764.181	- 64.181	+ 16.068	1587.260311			484.819764
21	-148,704.810	- 4.810	- 26.225	-39,765.677	- 65.677	- 13.062	1722.379225		62.828220	
							3309.639636	2565.220044	126.264684	870.684306
							744.419622			744.419622
								Σ = 372.209811		
		148.700			39.700					
6	-148,730.173	- 30.173	+ 25.959	-39,764.181	- 64.181	+ 12.256		1666.074579		369.800280
7	-148,730.769	- 30.769	- 24.549	-39,777.933	- 77.933	+ 15.234	1913.177217			468.734946
22	-148,705.624	- 5.624	- 25.959	-39,779.415	- 79.415	- 12.256	2061.533985		68.927744	
21	-148,704.810	- 4.810	+ 24.549	-39,765.677	- 65.677	- 15.234		1612.304672	73.275540	
							3974.711202	3.278.379252	142.203284	838.575234
							696.331950			696.331950
								Σ = 348.165975		

面積計算書

工
区

ブ
ロ
ック

27

計
算
者



精
算
者



備
考

(5) 高野 269-1(1) 高野
(6) 高野 269-1(1)

点	①	②	③	④	⑤	⑥	③ × ⑤		② × ⑥	
	X	X-(定数)	X _{n-1} -X _{n+1}	Y	Y-(定数)	Y _{n-1} -Y _{n+1}	+	-	+	-
		148.700			39.700					
7	-148,730.769	- 30.769	+ 25.557	-39,777.933	- 77.933	+ 8.014		1991.733681		246.582766
8	-148,731.181	- 31.181	- 2.481	-39,787.429	- 87.429	+ 12.020	216.911349			374.795620
9	-148,728.288	- 28.288	- 24.856	-39,789.953	- 89.953	+ 3.812	2235.871768			107.833856
10	-148,706.325	- 6.325	- 22.664	-39,791.241	- 91.241	- 10.538	2067.886024			66.652850
22	-148,705.624	- 5.624	+ 24.444	-39,779.415	- 79.415	- 13.308		1941.220260	74.844192	
							4520.669141	3.932.953941	141.497042	729.212242
							587.715200			587.715200
								1/2 = 293.857600		
		148.600			39.700					
10	-148,706.325	- 106.325	- 21.014	-39,791.241	- 91.241	+ 13.099	1917.338374			1392.751175
11	-148,684.610	- 84.610	- 24.216	-39,792.514	- 92.514	- 0.919	2240.319024			77.756590
12	-148,682.109	- 82.109	- 3.181	-39,790.322	- 90.322	- 11.672	287.314282			958.376248
13	-148,681.429	- 81.429	+ 23.515	-39,780.842	- 80.842	- 10.907		1900.999630	888.146103	
22	-148,705.624	- 105.624	+ 24.896	-39,779.415	- 79.415	+ 10.399		1977.115840		1098.383976
							4444.971680	3.878.115470	1924.278944	2491.135151
							566.856210			566.856210
								1/2 = 293.428105		

面積計算書

工区: _____ プロック: 37 計算者: _____ 精算者: _____ 備考: (77) 266-1(10) (81) 265-1(10)

点	①	②	③	④	⑤	⑥	③ × ⑤		② × ⑥	
	X	X-(定数)	X _{n-1} -X _{n+1}	Y	Y-(定数)	Y _{n-1} -Y _{n+1}	+	-	+	-
13	-148,681.429	- 21.429	- 25.179	-39,780.842	- 80.842	- 12.301	225.520718		1,001.658129	
14	-148,680.445	- 20.445	+ 23.381	-39,767.114	- 67.114	- 15.165		1567.192434	1219.948225	
21	-148,704.810	- 104.810	+ 25.179	-39,765.677	- 65.677	+ 12.301		1,653.621183		1,289.267810
22	-148,705.624	- 105.624	- 23.381	-39,779.415	- 79.415	+ 15.165	1,856.802115			1,601.727960
							3892.322833	2222.872617	2221.606554	2891.055770
							669.449216			669.449216
								1/2 = 334.7246081		
14	-148,680.445	- 20.445	- 25.409	-39,767.114	- 67.114	- 13.110	1,705.299626		1,054.633950	
15	-148,679.401	- 79.401	+ 23.503	-39,752.567	- 52.567	- 15.995		1,235.482201	1,270.018995	
20	-148,702.948	- 102.948	+ 25.409	-39,751.119	- 51.119	+ 13.110		1,298.882671		1,362.758280
21	-148,704.810	- 104.810	- 23.503	-39,765.677	- 65.677	+ 15.995	1,543.606521			1,676.435950
							2,248.906157	2,534.364872	2,324.652925	3,039.192230
							714.541285			714.541285
								1/2 = 357.2706425		

面積計算書

工区: 27 フロック: 27 計算者: [印] 精算者: [印] 備考: 陽切 I II

点	①	②	③	④	⑤	⑥	③ × ⑤		② × ⑥	
	X	X-(定数)	X _{n-1} -X _{n+1}	Y	Y-(定数)	Y _{n-1} -Y _{n+1}	+	-	+	-
I	-148,676.734	^{148.670} - 6.934	+ 2.716	-39,718.162	^{39.700} - 18.162	- 3.700		49.327992	25.655800	
1	-148,679.866	- 9.866	+ 0.216	-39,717.480	- 17.480	+ 3.018		3.775680		29.775588
17	-148,677.150	- 7.150	- 2.922	-39,721.180	- 21.180	+ 0.682	62.099760			4.876300
							62.099760	53.102672	25.655800	34.651888
							8.996088			8.996088
								½ = 4.498044		
3	-148,724.744	^{148.720} - 4.744	- 0.130	-39,707.044	^{39.700} - 7.044	- 2.997	0.915720			14.217768
II	-148,727.666	- 7.666	+ 3.052	-39,706.365	- 6.365	+ 2.318		19.425980		17.769788
4	-148,727.796	- 7.796	- 2.922	-39,709.362	- 9.362	+ 0.679	27.355764			5.293484
							29.271484	19.425980	14.217768	23.063272
							8.845504			8.845504
								½ = 4.422752		

面積計算書

工区

ブロック

27

計算者

精算者

備考

陽切Ⅱ

Ⅳ

点	①	②	③	④	⑤	⑥	③ × ⑤		② × ⑥	
	X	X - (定数)	X _{n-1} - X _{n+1}	Y	Y - (定数)	Y _{n-1} - Y _{n+1}	+	-	+	-
8	-148,731.181	^{148.700} - 31.181	+2.995	-39,787.429	^{39.780} - 7.429	- 0.176		22.249855	5.487856	
Ⅱ	-148,731.283	- 31.283	-2.893	-39,789.777	- 9.777	+2.524	28.284861			78.958292
9	-148,728.288	- 28.288	- 0.102	-39,789.953	- 9.953	- 2.348	1.015206		66.420224	
							29.300067	22.249855	71.908080	78.958292
							7.050212			7.050212
								1/2 = 3.525106		
11	-148,684.610	^{148.680} - 4.610	+0.167	-39,792.514	^{39.790} - 2.514	+2.329		0.419838		10.736690
Ⅳ	-148,682.276	- 2.276	-2.501	-39,792.651	- 2.651	-2.192	6.630151		4.988992	
12	-148,682.109	- 2.109	+2.334	-39,790.322	- 0.322	-0.137		0.751548	0.228933	
							6.630151	1.171386	5.277925	10.736690
							5.458765			5.458765
								1/2 = 2.7293825		

計年月日

計算者

検査者



B.NO. 27

各筆面積計算書

地番	算式	隅切	地積	摘要
1	高柳 263 (4)		635.66	
2	" 264 -1		1240.88	
3	" 265 -1 (4)		372.20	
4	" 266 -1 (4)		348.16	
5	" 267 -1 (1)		293.85	
6	" 267 -1 (4)		283.42	
7	" 266 -1 (4)		234.72	
8	" 265 -1 (4)		257.27	
9	" 264 -0		85.73	
		計	2954.89	宛地9筆
	隅切 I	4.50		
	" II	4.42		
	" III	2.52		
	" IV	2.73		
	計	15.18		
		合計	2970.07	
		全作	2970.08	
		差	-0.01	