

街区略図

工区

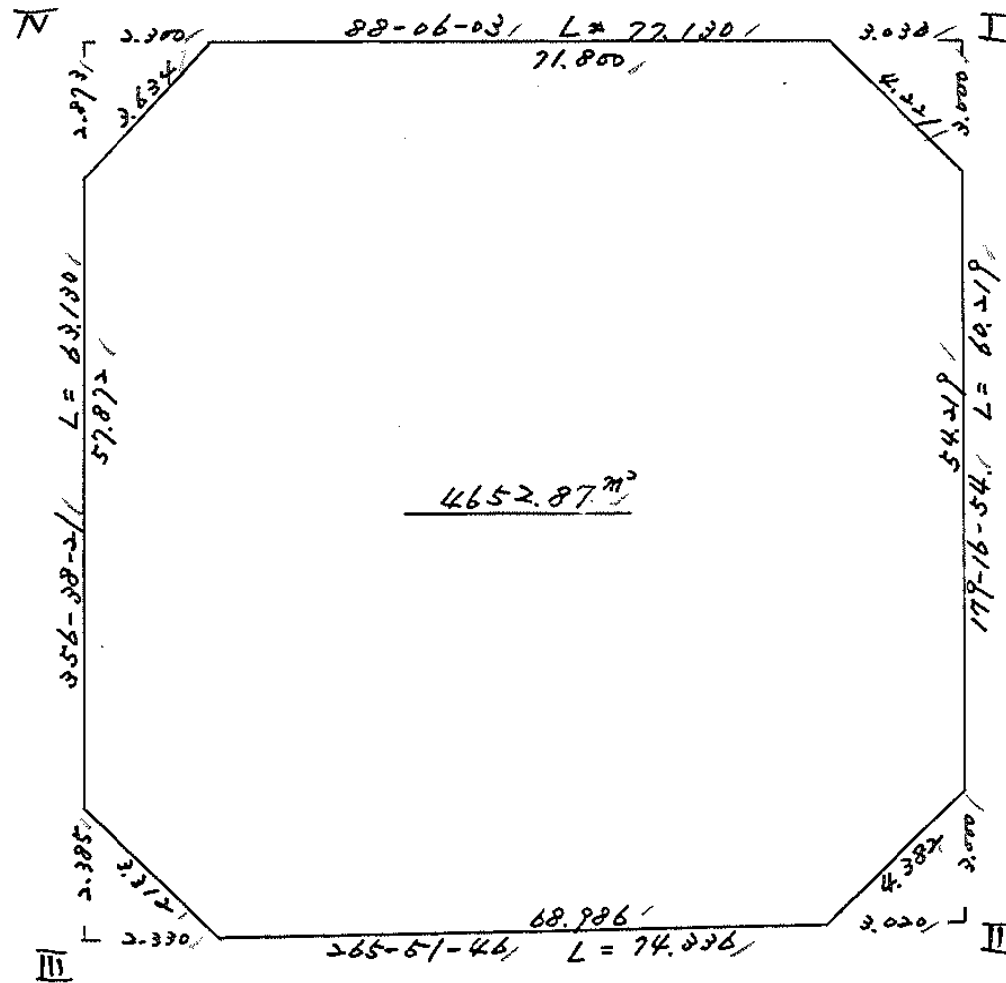
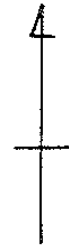
ブロック

38

記入者



点検者



面積計算書

工
区

フ
ロ
ック

20

計
算
者

精
算
者



備
考

全体

点	①	②	③	④	⑤	⑥	③ × ⑤		② × ⑥	
	X	X-(定数)	X _{n-1} -X _{n+1}	Y	Y-(定数)	Y _{n-1} -Y _{n+1}	+	-	+	-
I	-148.610.772	^{148.600} - 10.772	+ 57.658	-39.719.614	^{39.700} - 19.614	- 77.843		1130.904012	838.524796	
II	-148.670.986	- 70.986	+ 65.577	-39.718.859	- 18.859	+ 73.387		1236.716642		520.944952
III	-148.676.349	- 76.349	- 57.658	-39.793.001	- 93.001	+ 77.843	5262	51658		5943.235207
IV	-148.613.328	- 13.328	- 65.577	-39.796.702	- 96.702	- 73.387	6341.427054		978.101936	
							11.703.678712	2.36720655	1.816.626732	11.152.624789
							9.336.058057			9.336.058057
							$\Sigma = 4668.02902851$			
				I	II	III	IV			
				$4668.02 - (4.55 + 4.52 + 2.78 + 3.30) = 4652.871$						
					25.15					

算 計 地 画

画地略図

工区

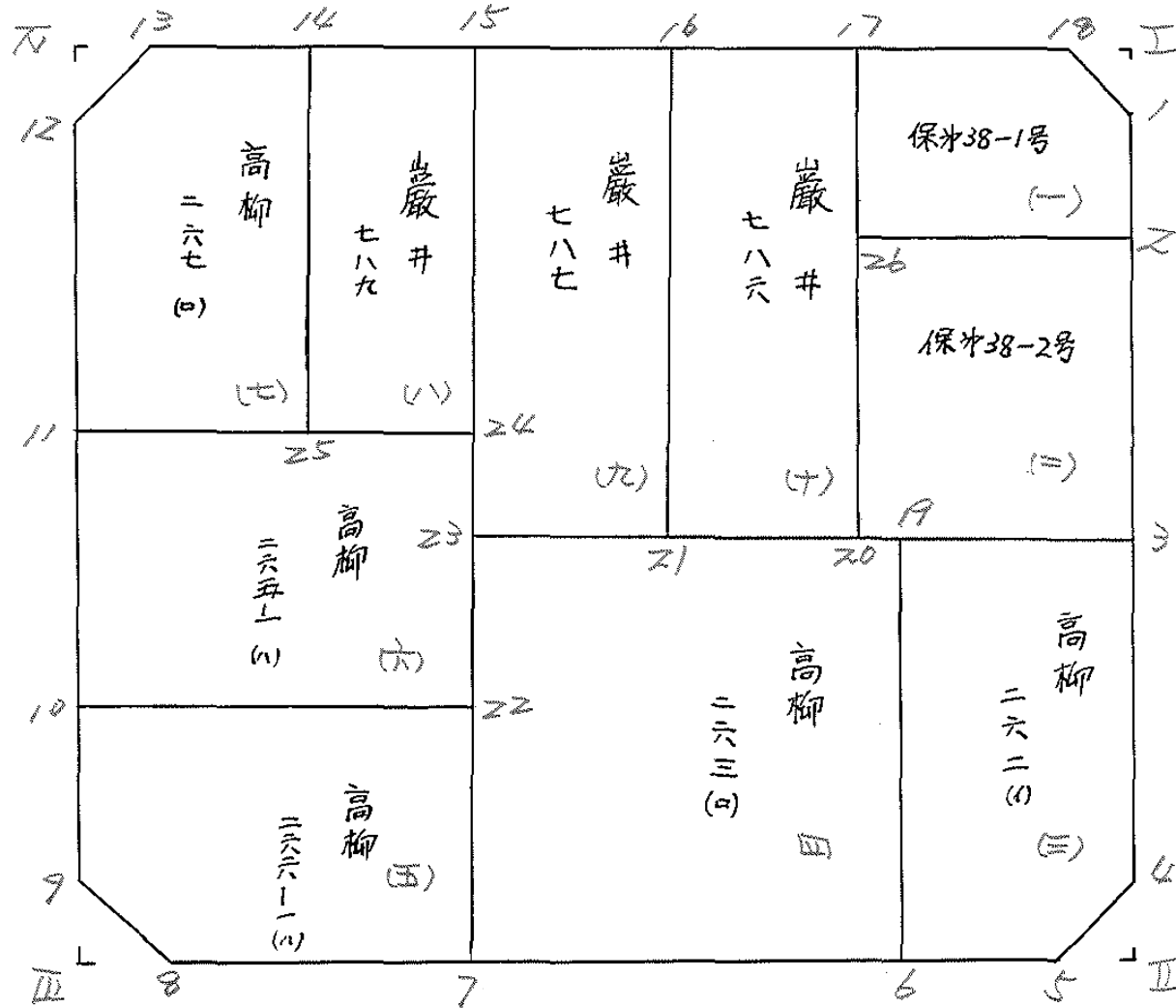
ブロック

38

記入者



点検者



面積計算書

工区

ブロック

38

計算者

精算者

備考

(-)保才38-1号(=)保才38-2号

点	①	②	③	④	⑤	⑥	③ × ⑤		② × ⑥		
	X	X-(定数)	Xn-1-Xn+1	Y	Y-(定数)	Yn-1-Yn+1	+	-	+	-	
1	-148.618.772	-148.600-13.772	+ 11.195	-39.719.576	-39.700-19.576	-3.171		219.153.320	43.671012		
2	622.067	22.067	+ 8.984	719.472	19.472	+ 20.679		174.936448		456.823493	
26	622.756	22.756	- 10.599	740.255	40.255	+ 21.145	426.662705			421.175620	
17	611.468	11.468	- 11.884	740.617	40.617	- 17.612	422.692428			201.974416	
18	610.872	10.872	+ 2.304	722.643	22.643	- 21.041	52.169472			228.757752	
								909.255.173	446.259240	274.403182	937.499113
								463.095932			463.095932
								1/2 = 231.5479665			
2	-148.622.067	-148.600-22.067	+ 20.038	-39.719.472	-39.700-19.472	- 21.043		390.179936	43.495881		
3	642.794	22.794	+ 21.401	719.212	19.212	+ 20.118		411.156012		458.569692	
20	643.468	23.468	- 20.038	739.590	39.590	+ 21.043	793.304.420			493.237124	
26	622.756	2.756	- 21.401	740.255	40.255	- 20.118	861.497255			55.445208	
								1654.201.675	201.225942	98.941029	952.406216
								853.465727			853.465727
								1/2 = 426.7328635			

面積計算書

工
区

フ
ロ
ン
ク

38

計
算
者



精
算
者



備
考

(3)

高柳 262 (1)

(4)

高柳 262 (10)

点	①	②	③	④	⑤	⑥	③ × ⑤		② × ⑥	
	X	X - (定数)	X _{n-1} - X _{n+1}	Y	Y - (定数)	Y _{n-1} - Y _{n+1}	+	-	+	-
3	-148.642.794	- 42.794	+ 24.568	-39.719.212	- 19.212	- 19.174		472.000416	820.532156	
4	-148.667.986	- 67.986	+ 29.410	-39.718.897	- 18.897	+ 2.659		536.863770	180.774774	
5	-148.671.204	- 71.204	+ 4.321	-39.721.271	- 21.871	+ 18.231		94.504591	1298.120124	
6	-148.672.307	- 72.307	- 27.786	-39.737.128	- 37.128	+ 16.200	1031.638608		1171.373400	
19	-148.643.418	- 43.418	- 29.513	-39.738.071	- 38.071	- 17.916	1123.589423		777.876888	
							2155.228031	1103.368777	1.598.409044	2.650.268298
							1.051859254			1.051859254
								Σ = 525.929627		
6	-148.672.307	- 72.307	+ 30.877	-39.737.128	- 37.128	+ 26.535		1146.401256	1918.666245	
7	-148.674.295	- 74.295	- 27.979	-39.764.606	- 64.606	+ 28.448	1807.611274		2113.500160	
23	-148.644.328	- 44.328	- 30.877	-39.765.576	- 65.576	- 26.535	2024.790152		1176243480	
19	-148.643.418	- 43.418	+ 27.979	-39.738.071	- 38.071	- 28.448	1065.188509		1235155264	
							3.832.401426	211.589765	2.411.398744	4.032.210205
							1.620.811661			1.620.811661
								Σ = 810.4058305		

面積計算書

工区

ブロック

28

計算者



精算者



備考

(5)

(6)

高程 > 66-1 (M)

高程 > 65-1 (M)

点	①	②	③	④	⑤	⑥	③ × ⑤		② × ⑥		
	X	X - (定数)	X _{n-1} - X _{n+1}	Y	Y - (定数)	Y _{n-1} - Y _{n+1}	+	-	+	-	
7	-148,674.295	^{148.600} -74.295	+21.218	-39,764.606	^{39.700} -64.606	+25.445		1370.810108		1890.436275	
8	-148,676.181	-76.181	-0.327	-39,790.677	-90.677	+28.535	29.651379			2173.824835	
9	-148,673.968	-73.968	-20.226	-39,773.141	-93.141	+3.522	1882.269866			260.515296	
10	-148,655.955	-55.955	-19.025	-39,794.199	-94.199	+7.909	1790.251995			1561.648095	
22	-148,654.963	-54.963	+18.340	-39,765.232	-65.232	+9.593		1196.354880	1626.520059		
								3.703.773240	2.567.164988	3.188.168154	4.324.776406
								1.136.608252			1.136.608252
											1/2 = 568.304126
10	-148,655.955	^{148.600} -55.955	-13.949	-39,794.199	-94.199	+9.844	1313.981851			1669.921020	
11	-148,641.014	-41.014	-15.935	-39,795.076	-95.076	+28.484	1515.036060			1168.242776	
24	-148,640.020	-40.020	+13.949	-39,765.715	-65.715	+29.844		916.658525	1194.356880		
22	-148,654.963	-54.963	+15.935	-39,765.232	-65.232	+28.484		1039.471920		1565.566092	
								2.829.017911	1.956.130455	2.362.599655	2.235.427112
								272.287456			272.287456
											1/2 = 436.443728

面積計算書

工
区

ブ
ロ
ック

28

計
算
者

精
算
者

備
考

(7)

(8)

面積 267 (D)

畝升 789

点	①	②	③	④	⑤	⑥	③ × ⑤		② × ⑥	
	X	X - (定数)	X _{n-1} - X _{n+1}	Y	Y - (定数)	Y _{n-1} - Y _{n+1}	+	-	+	-
11	-148,641.014	-148.610 31.014	-24.271	-39,775.076	-39.770 25.076	+17.611	608.619596			546.187554
12	-148,616.196	6.196	-27.762	-39,776.534	26.534	-0.672	736.626908		4.169908	
13	-148,613.252	3.252	-3.428	-39,774.403	24.403	-16.707	83.653484		54.321164	
14	-148,612.768	2.768	+27.215	-39,779.827	9.827	-15.480		267.441805	42.848640	
25	-148,640.467	30.467	+28.246	-39,778.923	8.923	+15.249		252.039058		464.591882
							1428.909988	529.480863	101.349712	1010.778237
							909.429125			909.429125
								1/2 = 454.7145625		
14	-148,612.768	-148.610 2.768	-28.137	-39,779.827	-39.760 19.827	-12.312	557.872299		24.079616	
15	-148,612.330	2.330	+27.252	-39,766.611	6.611	-14.112		180.162972	22.880960	
24	-148,640.020	20.020	+28.137	-39,765.715	5.715	+12.312		160.802955		267.606240
25	-148,640.467	30.467	-27.252	-39,778.923	18.923	+14.112	515.689596			429.960304
							1072.561895	240.965927	66.960576	799.556544
							732.595968			732.595968
								1/2 = 366.297984		

面積計算書

工区

ブロック

28

計算者

精算者

備考

(9) 農林 787

(10) 農林 786

点	①	②	③	④	⑤	⑥	③ × ⑤		② × ⑥	
	X	X - (定数)	X _{n-1} - X _{n+1}	Y	Y - (定数)	Y _{n-1} - Y _{n+1}	+	-	+	-
15	-148.612.330	-12.330	-32.430	-39.766.611	-66.611	-11.992	160.194730		147.861360	
16	-148.611.898	-11.898	+31.567	-39.753.584	-53.584	-14.058		1691.426128	167.262084	
21	-148.643.897	-43.897	+32.430	-39.752.553	52.553	+11.992		1704.298790		526.412824
23	-148.644.328	-44.328	-31.567	-39.765.576	65.576	+14.058		2070.037592		623.163024
							4230.232322	2395.779918	315.127444	1149.575848
							834.452404	1/2 = 417.226202		834.452404
16	-148.611.898	-11.898	-32.429	-39.753.584	-53.584	-11.936	1727.675536		142014528	
17	-148.611.468	-11.468	+31.570	-39.740.617	-40.617	-13.994		1282.278690	160.483192	
20	-148.643.468	-43.468	+32.429	-39.739.590	39.590	+11.936		1283.864110		518.834048
21	-148.643.897	-43.897	-31.570	-39.752.553	52.553	+13.994	1659.098210			614.294618
							2396.773746	2.566.142802	302.427.720	1.133.122.666
							830.630946			830.630946
								1/2 = 415.315473		

面積計算書

工区

ブロック

38

計算者



精算者

備考

陽切Ⅰ

陽切Ⅱ

点	①	②	③	④	⑤	⑥	③ × ⑤		② × ⑥	
	X	X-(定数)	X _{n-1} -X _{n+1}	Y	Y-(定数)	Y _{n-1} -Y _{n+1}	+	-	+	-
I.	-148,610.772	-148.600 10.772	+ 2.900	-39,719.614	-39.700 19.614	- 3.067		56.880600	33.037724	
1.	-148,613.772	13.772	+ 0.100	-39,719.576	19.576	+ 3.029		1.957600		41.715388
18.	-148,610.872	10.872	- 3.000	-39,722.643	22.643	+ 0.038	67.929000			0.413196
							67.929000	58.838200	33.037724	42.128524
							9.090800			9.090.800
								Σ = 4.545400		
Ⅱ	-148,670.986	148.600 -70.986	+ 3.218	-39,718.859	39.700 -18.859	+ 2.974		60.688262		21.112364
5	-148,671.204	-71.204	- 3.000	-39,721.871	- 21.871	+ 0.038	65.612000			2.705752
4	-148,667.986	-67.986	- 0.218	-39,718.897	-18.897	- 3.012	4.119546			204.772832
							69.732546	60.688262	204.772832	12.818.116
							9.044284			9.044284
								Σ = 4.522142		

面積計算書

工
区

フ
ロ
ック

28

計
算
者



精
算
者

備
考

陽功Ⅲ

陽功Ⅳ

点	①	②	③	④	⑤	⑥	③ × ⑤		② × ⑥	
	X	X-(定数)	X _{n-1} -X _{n+1}	Y	Y-(定数)	Y _{n-1} -Y _{n+1}	+	-	+	-
Ⅱ	-148,676.349	-148,670. 6.349	-2.213	-39,793.001	-39,790. 3.001	+2.464	6.641213			15.642936
9	-148,673.968	3.968	-0.168	-39,793.141	3.141	-2.324	0.527628		9.221632	
8	-148,676.181	6.181	+2.281	-39,790.677	0.677	-0.140		1.611927	0.865340	
							7.168901	1.611927	10.086972	15.642936
							5.556964			5556.964
								1/2 = 2.778482		
Ⅳ	-148,613.328	-148,610. 3.328	-2.944	-39,796.702	-39,790. 6.702	-2.131	19.720688		7.071968	
13	-148,613.252	3.252	+2.868	-39,794.403	4.403	-0.168		12.627804	0.546326	
12	-148,616.196	6.196	+0.076	-39,796.534	6.534	+2.299		0.496584		14.244604
							19.720688	12.124388	7.638204	14.244604
							6.606350			6.606350
								1/2 = 3.303150		

計年 月 算日	計 算 者	檢 查 者
---------------	-------------	-------------

B. NO. 38

各筆面積計算書

地番	算式	隅切	地積	摘要
1	保留地才 38-1号		231 54	
2	" 才 38-2号		426 73	
3	高柳 262 (丁)		525 72	
4	" 263 (0)		810 40	
5	" 266-1 (ハ)		568 30	
6	" 265-1 (ハ)		436 44	
7	" 267 (ロ)		454 71	
8	巖田 789		266 29	
9	" 787		47 22	
10	" 786		415 21	
		合計	4652 86	
		全体面積	4652 87	
		差	- 0 01	
	空地面積		2994 59	8筆
	保留地面積		658 27	2筆