

街区略図

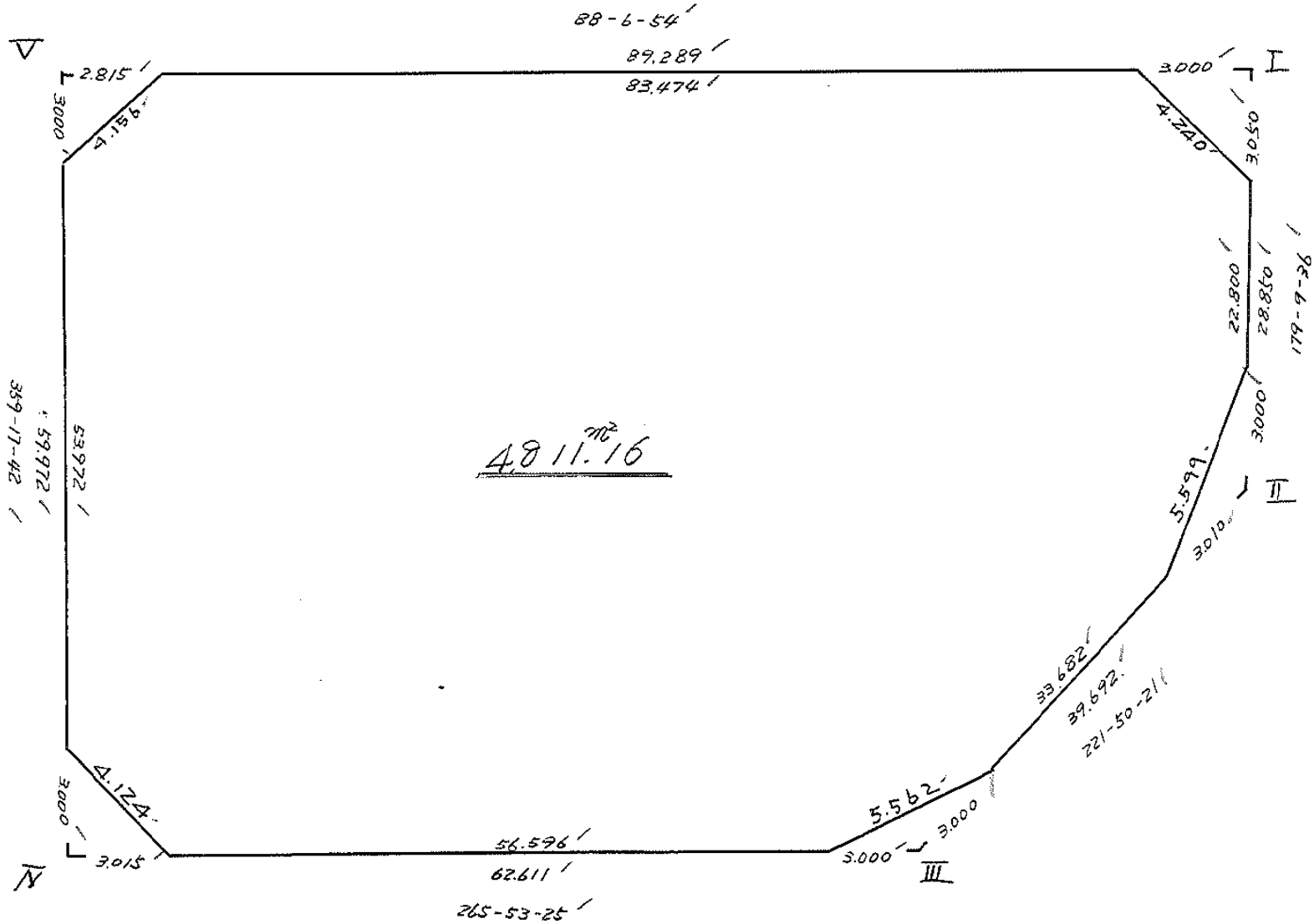
工区

ブロック

43

記入者

点検者



面積計算書

工
区

ブ
ロ
ック

43

計
算
者



測
算
者



備
考

全体

点	①	②	③	④	⑤	⑥	③ × ⑤		② × ⑥	
	X	X - (定数)	X _{n-1} - X _{n+1}	Y	Y - (定数)	Y _{n-1} - Y _{n+1}	+	-	+	-
I	-148.607.644	-148,600 - 7.644'	+25.910'	-39,674.365	-39,620 - 4.365'	-89.664'			113.097.150	685.391.616
II	636.491	36.491'	+58.418'	673.942	3.942'	+26.053'			239.288.756	952.700.023
III	666.062	66.062'	+34.058'	650.418	30.418'	+88.926'			1,035.976.204	5,874.629.412
IV	670.549	70.549'	-55.481'	712.868	92.868'	+63.188'	5,152.409.508			4,457.850.212
V	610.581	10.581'	-62.905'	713.606	93.606'	-88.503'	5,888.285.430			936.450.243
							11,040,694.938	1,379,357.150	1,621.841.859	11,283.179.647
							9,661.337.788			9,661.337.788
							$\times \frac{1}{2} = 4,830.668.894'$			
							全体 - (ズミ切 I + II + III + IV + V) = 4,830.668.894' - 19.50110.95'			
							= 4,811.167.7845'			
							≒ 4,811.16 / m ²			

画地略図

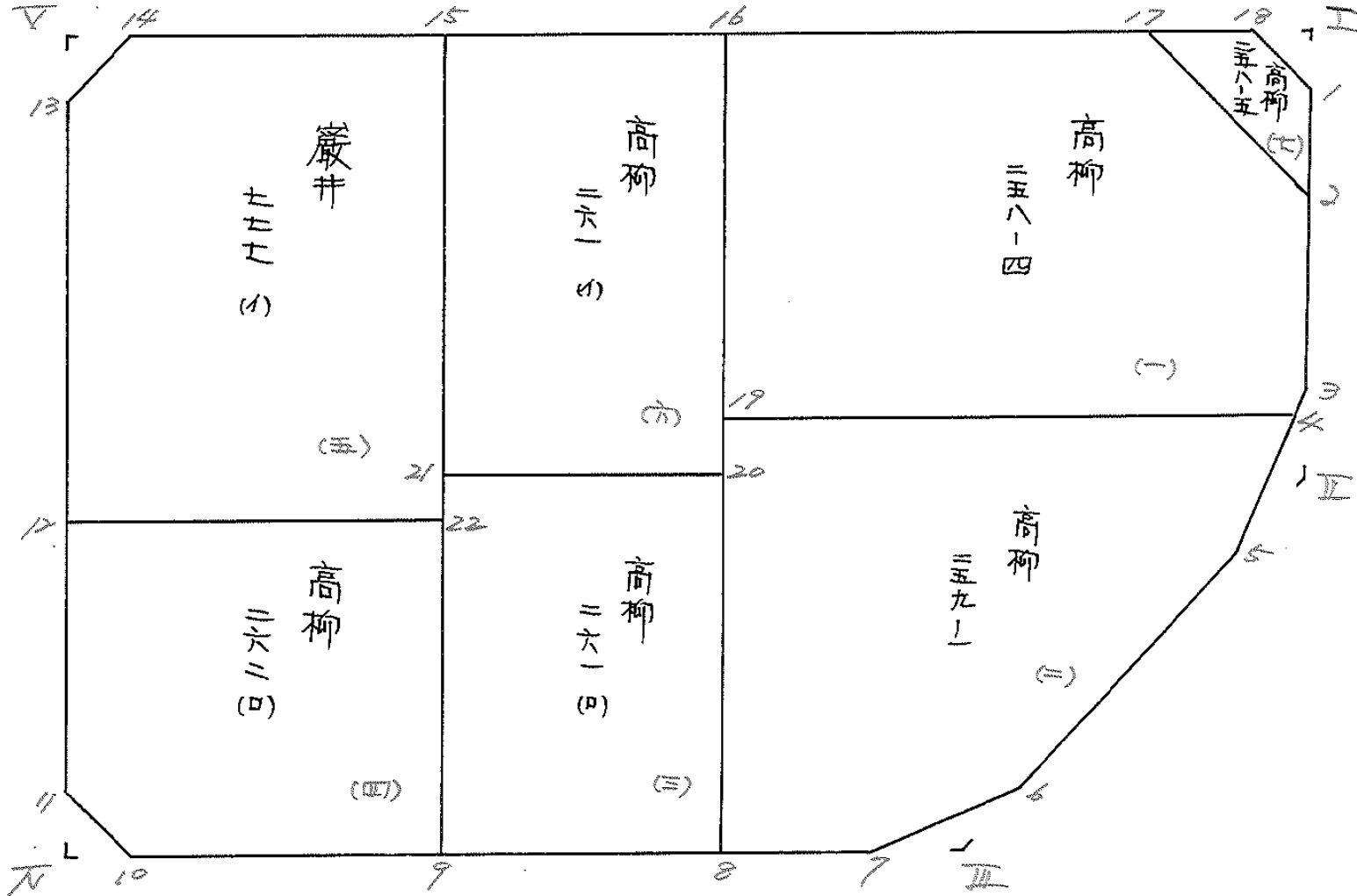
工区

ブロック

43

記入者

点検者



面積計算書

工
区

フ
ロ
ック

43

計
算
者



精
算
者



備
考

高柳 258-5 (土)

高柳 258-4 (一)

点	①	②	③	④	⑤	⑥	③ × ⑤		② × ⑥	
	X	X-(定数)	X _{n-1} -X _{n+1}	Y	Y-(定数)	Y _{n-1} -Y _{n+1}	+	-	+	-
1	-148,610.694	-148,600- 10.694	+9.602	-39,624.320	-39,620- 4.320	-3.141		41,480.640	33,589.854	
2	617.345	17.345	-2.698	624.223	4.223	+10.740	11,393.654			126,785.300
17	607.996	7.996	-9.602	635.060	15.060	+3.141	144,606.120			25,115.436
18	607.743	7.743	+2.698	627.364	7.364	-10.740		19,868.072	83,159.820	
							155,999.774	61,348.712	116,749.674	211,400.736
							94,651.062			94,651.062
							x1/2 = 47,325.531			
2	-148,617.345	-148,600- 17.345	+25.495	-39,624.223	-39,620- 4.223	-11.074		107,665.325	192,078.530	
3	633.491	33.491	+16.727	623.986	3.986	-0.020		66,673.822	0,669.820	
4	634.072	34.072	+1.265	624.203	4.203	+38.777		7,838.595		1321,209.944
19	635.356	35.356	-25.135	662.763	42.763	+38.442	1074,848.005			1394,511.352
16	608.937	8.937	-27.367	663.645	43.645	-27.703	1194,127.200		247,581.711	
17	607.996	7.996	+8.408	635.060	15.060	-39.422		126,624.480	315,218.312	
							2268,975.205	308,802.282	755,548.372	2915,721.296
							1,960,172.923			1,960,172.923
							x1/2 = 980,086.4615			
							1,027.66			

面積計算書

工
区

フ
ロ
ック

43

計
算
者



精
算
者



備
考

(=) 高柳 259-1 (E) 高柳 261 (D)

点	①	②	③	④	⑤	⑥	③ × ⑤		② × ⑥	
	X	X-(定数)	Xn-1-Xn+1	Y	Y-(定数)	Yn-1-Yn+1	+	-	+	-
4	-148,634.072	^{-148,630-} 4.072	+3.378	-39,624,203	^{-39,620-} 4.203	-36.813		14,197.734	149,902.536	
5	638.734	8.734	+29.755	625.950	5.950	+24.214		177,047.250		211,485.076
6	663.827	33.827	+27.543	648.417	28.417	+27.460		787,689.431		978,889.422
7	666.277	36.277	+3.046	653.410	33.410	+13.294		101,766.860		487,266.438
8	666.873	36.873	-30.921	661.711	41.711	+9.353	1289.745931			344,873.169
19	635.356	5.356	-32.801	662.763	42.763	-37.508	1,407,669.163		200,892.848	
							2,592.414.994	1,075,696.275	350,795.384	1,967,514.103
							1,616.718.719			1,616.718.719
							x1/2 = 808.359.359.5			
8	-148,666.873	^{-148,630-} 36.873	+29.413	-39,661.711	^{-39,660-} 1.711	+19.447		807.75 50,325.643		717,069.231
9	668.338	38.338	-27.273	682.091	22.091	+21.326	602,487.843			819,596.188
21	639.600	9.600	-29.413	683.037	23.037	-19.447	677,587.281		186,691.200	
20	638.925	8.925	+27.273	667.644	2.644	-21.326		72,109.812	190,334.550	
							1,780.075.124	177,435.455	377,025.750	1,534,665.419
							1,157,639.669			1,757,639.669
							x1/2 = 578.819.834.5			
							578.40			

面積計算書

工
区

フ
ロ
ック

43

計
算
者



精
算
者



備
考

(四) 高柳 262(2) (五) 巖井 777(4)

点	①	②	③	④	⑤	⑥	③ × ⑤		② × ⑥	
	X	X-(定数)	X _{n-1} -X _{n+1}	Y	Y-(定数)	Y _{n-1} -Y _{n+1}	+	-	+	-
9	148,668,338	-148,640 28,338	+28,216	-39,682,091	-39,680 2,091	+26,907		58,999,656		762,490,564
10	670,333	30,333	-0,789	709,861	29,861	+30,813	23,560,329			934,650,729
11	667,549	27,549	-27,227	712,904	32,904	+3,344	895,877,208			92,123,856
12	643,106	3,106	-25,432	713,205	33,205	-29,950	844,469,560		93,024,700	
22	642,117	2,117	+25,232	682,954	2,954	-31,114		74,535,320	65,868,338	
							1,763,907,097	132,534,984	158,893,038	1,789,265,157
							1,630,372,113			1,630,372,113
							x 1/2 = 815,186,056.5 / 310,65			
12	148,643,106	-148,600 43,106	-28,536	-39,713,205	-39,680 33,205	+30,615	947,537,880			1319,690,180
13	613,581	13,581	-32,618	713,569	33,569	-2,412	1,094,953,642		32,757,372	
14	610,488	10,488	-3,974	710,793	30,793	-29,545	122,371,382		309,867,960	
15	609,607	9,607	+31,629	684,024	4,024	-27,839		127,295,096	267,449,273	
22	642,117	42,117	+33,499	682,954	2,954	+29,181		98,956,046		1229,016,177
							2,144,867,904	226,231,142	610,074,625	2,548,706,367
							1,938,631,762			1,938,631,762
							x 1/2 = 969,315,881 / 968,98			

面積計算書

工
区

フ
ロ
ック

43

計
算
者



精
算
者



備
考

(天)
高柳 251 1/1

点	①	②	③	④	⑤	⑥	③ × ⑤		② × ⑥	
	X	X-(定数)	X _{n-1} -X _{n+1}	Y	Y-(定数)	Y _{n-1} -Y _{n+1}	+	-	+	-
15	-148,609.607	-148,600 - 9.607	-30.663	-39,684.024	-39,660 - 24.024	-19.392	736.647912		186.298.944	
16	608.937	8.937	+29.318	663.645	3.645	-21.380		106.864.110	191.073.060	
20	638.925	38.925	+30.663	662.644	2.644	+19.392		81.072.992		754.233.600
21	639.600	39.600	-29.318	683.037	23.037	+21.380	675.398766			846.648.000
							1,412,046.678	187,937.082	377,392.004	1,601,481.600
							1,224,109.596			1,224,109.596
							x 1/2 = 612,054.798			
							612.00			

面積計算書

工
区

ブ
ロ
ック

43

計
算
者



精
算
者



備
考

スミ切 I, II, III

点	①	②	③	④	⑤	⑥	③ × ⑤	② × ⑥	
	X	X-(定数)	X _{n-1} -X _{n+1}	Y	Y-(定数)	Y _{n-1} -Y _{n+1}	+ -	+ -	
18	-148,607.743	-148,600 - 7.743	-3.050	-39,627.364	-39,620 - 7.364	+0.045	77,460,200	0.348,435	
I	607.644	7.644	+2.951	624.365	4.365	-3.044	12,881,115	23,268,336	
1	610.694	10.694	+0.099	624.320	4.320	+2.999	0,427,580	32,071,306	
							77,460,200	13,308,795	23,268,336
							9,151,405		9,151,405
							$x \frac{1}{2} = 4,575,702.5$		
3	-148,633.491	-148,630 - 3.491	-2.243	-39,623.986	-39,620 - 3.986	-2.008	8,940,598	7,009,928	
II	636.491	6.491	+5.243	623.942	3.942	+1.964	20,667,906	12,748,324	
5	638.734	8.734	-3.000	625.950	5.950	+0.044	17,850,000	0.384,296	
							26,790,598	20,667,906	7,009,928
							6,122,692		6,122,692
							$x \frac{1}{2} = 3,061,346$		
6	-148,663.827	-148,660 - 3.827	-0.215	-39,648.417	-39,640 - 8.417	-2.992	1,809,655	11,450,384	
III	666.062	6.062	+2.450	650.418	10.418	+4.993	25,524,100	30,267,566	
7	666.277	6.277	-2.235	653.410	13.410	-2.001	29,971,350	12,560,277	
							31,781,005	25,524,100	24,010,661
							6,258,905		6,258,905

$x \frac{1}{2} = 3,128,452.5$ 和測量建設株式会社

面積計算書

工
区

ブ
ロ
ック

43

計
算
者



精
算
者



備
考

スミ切 Ⅱ, Ⅲ

点	①	②	③	④	⑤	⑥	③	×	⑤	②	×	⑥
	X	X-(定数)	X _{n-1} -X _{n+1}	Y	Y-(定数)	Y _{n-1} -Y _{n+1}	+	-	+	-		
10	-148,670.333	-148,660- 10.333	+3.000	-39,709.861	-39.700- 9.861	-0.036			29.583000	0.371988		
Ⅱ	670.549	10.549	-2.784	712.868	12.868	+3.043	35.824512					32.100607
11	667.549	7.549	-0.216	712.904	12.904	-3.007	2.787264			22.699843		
							38.611776	29.583000	73.071831	32.100607		
							9.028776					9.028776
							$\times \frac{1}{2} = 4.514388$					
13	-148,613.581	-148,610- 3.581	+0.093	-39,713.569	-39.710- 3.569	+2.813			0.321917			10.073353
Ⅲ	610.581	0.581	-3.093	713.606	3.606	-2.796	11.153358			1.612856		
14	610.488	0.488	+3.000	710.793	0.793	-0.037			2.379000	0.018056		
							11.153358	2.710917	1.630912	10.073353		
							8.442441					8.442441
							$\times \frac{1}{2} = 4.2212205$					

計年
月
算日

計
算
者



檢
查
者



B.NO. 43

各筆面積計算書

地番	算式	隅切	地積	摘要
1	高柳 258-4		980.08	
2	" 259-1		808.35	
3	" 261 (四)		578.81	
4	" 262 (四)		815.18	
5	巖井 777 (四)		969.31	
6	高柳 261 (一)		612.05	
7	" 258-5		47.32	
	合計		4,811.10	
	全面積		4,811.16	
	差		-0.06	
	宅地面積		4,811.10	7筆