

BLOCK NO. 1 - 1

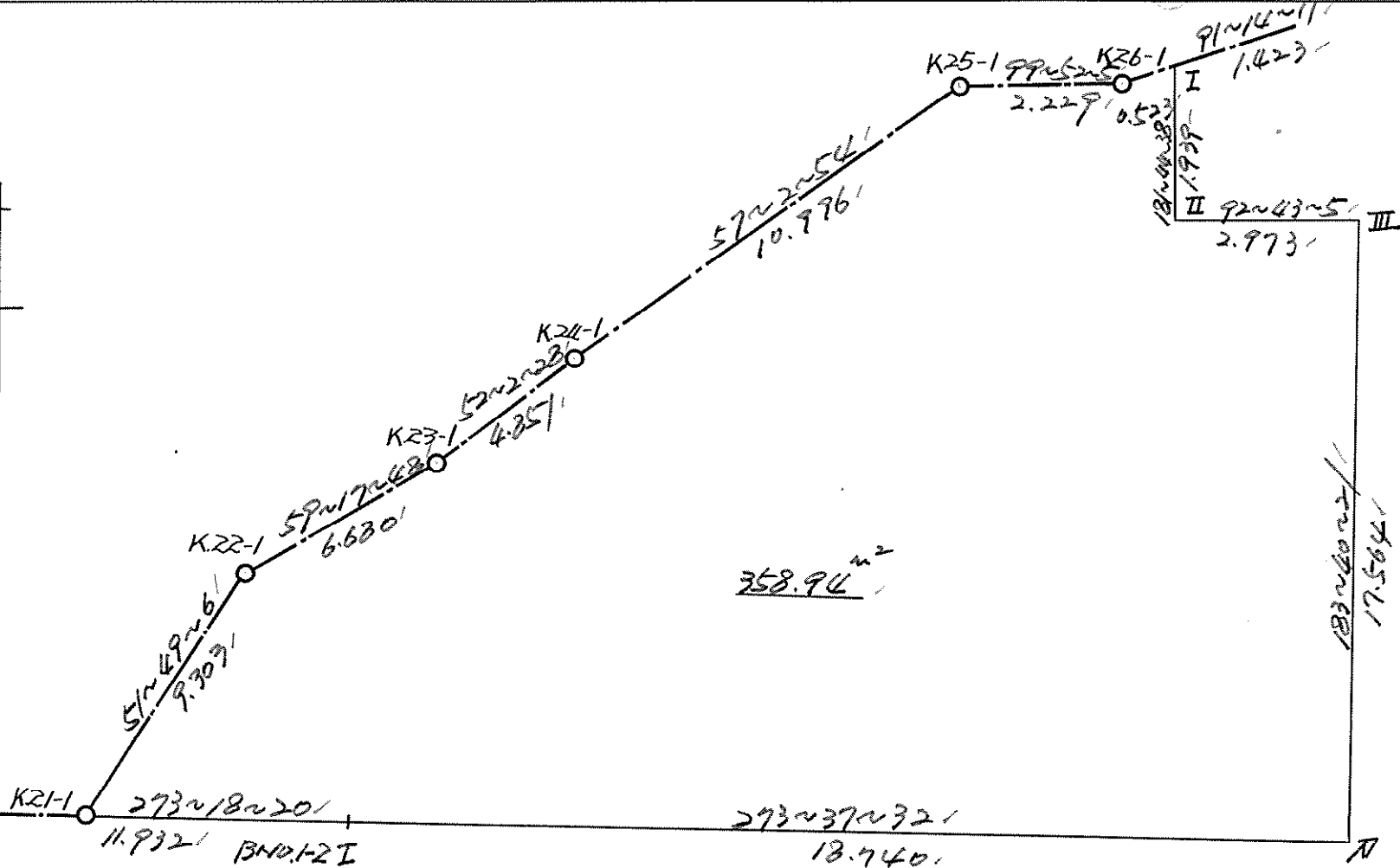
街区略図

工区

ブロック 1-1

記入者

点検者



面積計算書

工区

ブロック

1-1

計算者



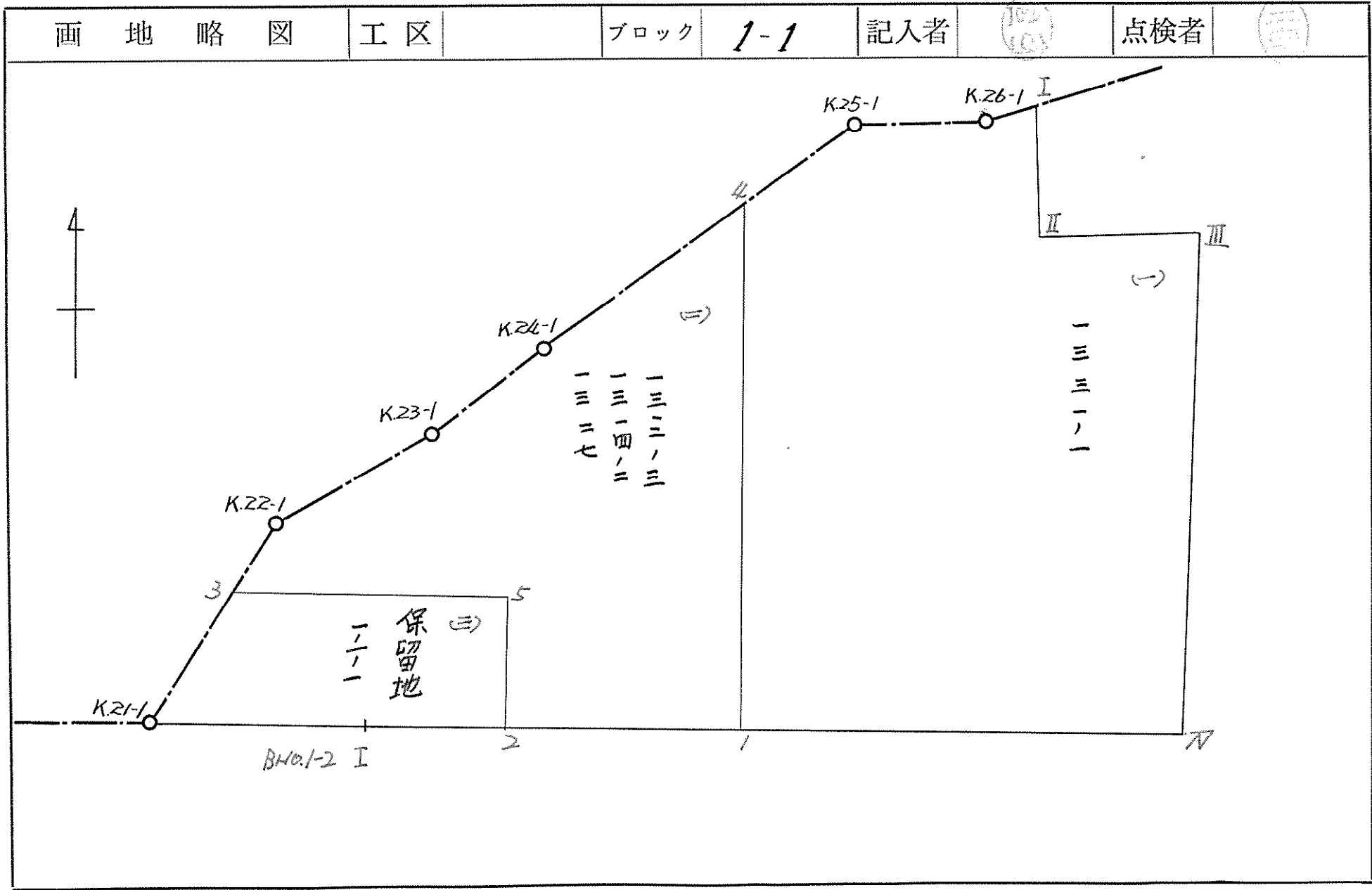
精算者



備考

全面積

点	①	②	③	④	⑤	⑥	⑦	⑧	⑨	⑩	⑪
	X	X - (定数)	X _{n-1} - X _{n+1}	Y	Y - (定数)	Y _{n-1} - Y _{n+1}	+	-	+	-	
I	550.565'	+530.000 20.565'	+ 1.949	426.533'	+390.000 36.533'	- 0.464	71.202817				9.542160
II	548.627'	18.627'	+ 2.079	426.474'	36.474'	- 2.911	75.829446				54.223197
III	548.486'	18.486'	+ 17.669	429.444'	39.444'	- 1.845	696.936036				34.106670
IV	530.958'	0.958'	+ 16.343	428.319'	38.319'	+ 19.827	626.247417			18.994266	
IV-2	532.143'	2.143'	- 1.273	409.617'	19.617'	+ 30.614		36.742641	65.605802		
K21-1	532.831'	2.831'	- 6.439	397.705'	7.705'	+ 4.599		49.612495	13.019769		
K22-1	538.582'	8.582'	- 9.162	405.018'	15.018'	- 13.057		137.594916		112.055174	
K23-1	541.993'	11.993'	- 6.395	410.762'	20.762'	- 9.569		132.772990		114.761017	
K24-1	544.977'	14.977'	- 8.965	414.527'	24.527'	- 13.052		220.422455		195.479804	
K25-1	550.958'	20.958'	- 5.599	423.814'	33.814'	- 11.423		189.324526		239.403234	
K26-1	550.576'	20.576'	+ 0.393	426.010'	36.010'	- 2.919	14.151930			55.946144	
								1424.367646'	766.470083'	97.619837'	1315.517400
								717.897563'		717.897563'	
										1/2 = 358.9487815'	



面積計算書

工
区

ブ
ロ
ック

1-1

計
算
者



精
算
者

備
考

(一) 1331-1

点	①	②	③	④	⑤	⑥	③ ×	⑤	② ×	⑥
	X	X - (定数)	X _{n-1} - X _{n+1}	Y	Y - (定数)	Y _{n-1} - Y _{n+1}	+	-	+	-
I	550.565'	+530.000 20.565'	+ 1.949	426.533'	+410.000 16.533'	- 0.464	32.222817			9.542160
II	548.627'	18.627'	+ 2.079	426.474'	16.474'	- 2.911	34.249446			54.223197
III	548.486'	18.486'	+ 17.669	429.444'	19.444'	- 1.845	343.556036			34.106670
A	530.958'	0.958'	+ 16.831	428.319'	18.319'	+ 12.129	308.327689		11.619582	
1	531.655'	1.655'	- 16.435	417.715'	7.715'	+ 10.005		120.222025	16.558275	
4	547.393'	17.393'	- 19.303	418.314'	8.314'	- 6.499		160.485142		113.037107
K25-1	550.958'	20.958'	- 3.183	423.814'	13.814'	- 7.496		43.969962		161.292768
K26-1	550.576'	20.576'	+ 0.393	426.010'	16.010'	- 2.719	6.291930			55.946144
							724.647318'	324.677129'	23.177857'	428.148046'
							399.970189'			399.970189'
								1/2 = 199.9850945'		

面積計算書

工区

ブロック

1-1

計算者



精算者



備考

(=)

1312-3
1314-2
1327

点	①	②	③	④	⑤	⑥	⑦	×	⑧	×	⑨
	X	X-(定数)	X _{n-1} -X _{n+1}	Y	Y-(定数)	Y _{n-1} -Y _{n+1}	+	-	+	-	
1	531.655'	+530.000 1.655'	+ 15.564	417.315'	+400.000 17.315'	+ 3.735	269.490660			6.181425	
2	531.829'	1.829'	- 3.139	414.579'	14.579'	+ 2.540		45.763481		4.645660	
5	534.794'	4.794'	- 3.798	414.775'	12.775'	+ 13.319		56.115450		63.851286	
3	535.627'	5.627'	- 3.788	401.260'	1.260'	+ 9.757		4.772880		54.902639	
K.22-1	538.582'	8.582'	- 6.366	405.018'	5.018'	- 9.502		31.944588			21.546164
K.23-1	541.993'	11.993'	- 6.395	410.762'	10.762'	- 9.569		68.822990			114.761017
K.24-1	544.977'	14.977'	- 5.400	414.587'	14.587'	- 7.552		78.769800			113.106304
4	547.393'	17.393'	+ 13.322	418.314'	18.314'	- 2.728	243.979108				47.448104
							513.469762		286.189189	129.581010	356.861589
							227.280579				227.280579
									1/2 =	113.6402895'	

面積計算書

工区

ブロック

1-1

計算者



精算者



備考

(三) 保留地 1-1-1

点	①	②	③	④	⑤	⑥	③ ×	⑤	② ×	⑥
	X	X - (定数)	X _{n-1} - X _{n+1}	Y	Y - (定数)	Y _{n-1} - Y _{n+1}	+	-	+	-
2	531.829'	^{+530.000} 1.829'	+ 2.651	414.579'	^{+390.000} 24.579'	+ 5.158	65.158929		9.433982	
B40/2 I	532.143'	2.143'	- 1.002	409.617'	19.617'	+ 16.874		19.656234	36.160982	
K2-1	532.831'	2.831'	- 3.484	397.705'	7.705'	+ 8.357		26.844220	23.658667	
3	535.627'	5.627'	- 1.963	401.260'	11.260'	- 17.070		22.103380		96.052890
5	534.794'	4.794'	+ 3.798	414.775'	26.775'	- 13.319	96.095450			63.851286
							159.254379	68.603834	69.253631	159.904176
							90.650545			90.650545
									72 = 45.325275	

