

BLOCK NO. 3

街区略図

工区

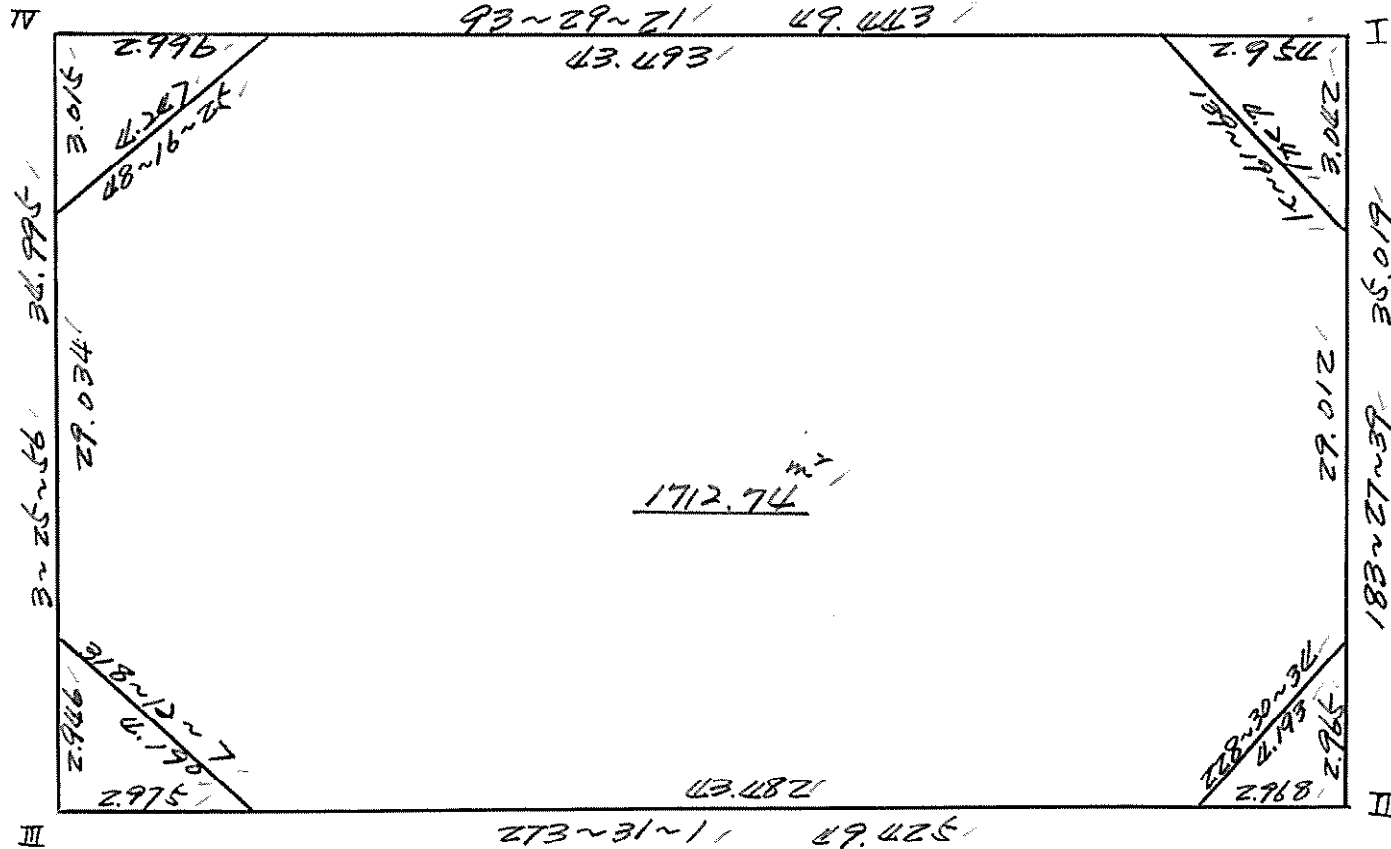
ブロック

3

記入者



点検者



面積計算書

工
区

ブ
ロ
ック

3

計
算
者

377

精
算
者

377

備
考

全 体

点	①	②	③	④	⑤	⑥	③ × ⑤		② × ⑥	
	X	X-(定数)	X _{n-1} -X _{n+1}	Y	Y-(定数)	Y _{n-1} -Y _{n+1}	+	-	+	-
I	523.815	^{480.} 43.815	+ 37.964	463.592	^{410.} 43.592	- 47.237	2024.66688			2069.689155
II	488.860	8.860	+ 31.923	461.478	41.478	+ 41.446	1643.33294			455.811560
III	491.892	11.892	- 37.964	412.146	2.146	+ 47.237		81.470744		561.742404
IV	526.824	46.824	- 31.923	414.241	4.241	- 41.446		135.385443		2408.907504
										3677.898882
										216.856187
										1017.553964
										4478.596659
										3461.042694
										3461.042694
										1/2 = 1730.521347
										平均
										I II III IV
										1730.52 - (4.49 + 4.40 + 4.33 + 4.51) = 1712.74

面積計算書

工区: 3 ブロック: 3 計算者: 渡辺 精算者: 渡辺 備考: 隅切 I II

点	①	②	③	④	⑤	⑥	③ × ⑤		② × ⑥	
	X	X - (定数)	X _{n-1} - X _{n+1}	Y	Y - (定数)	Y _{n-1} - Y _{n+1}	+	-	+	-
I	523.815	^{520.} 3.815	+ 3.216	463.592	^{460.} 3.592	- 2.764	11.551872			10.544660
1	520.779	0.779	- 0.180	463.408	3.408	+ 2.948		0.613440	2.296492	
17	523.995	3.995	- 3.036	460.644	0.644	- 0.184		1.955184		0.735080
							11.551872	2.568624	2.296492	11.279740
							8.983248			8.983248
										$\frac{1}{2} = 4.491624$
3	491.820	^{480.} 11.820	+ 0.182	461.657	^{450.} 11.657	- 2.962	2.121576			35.010840
II	488.860	8.860	+ 2.778	461.478	11.478	+ 3.141	31.885884		27.829260	
4	489.042	9.042	- 2.960	458.516	8.516	- 0.179		25.207360		1.618548
							34.007458	25.207360	27.829260	36.629358
							8.800098			8.800098
										$\frac{1}{2} = 4.400049$

面積計算書

工区

ブロック

3

計算者



精算者


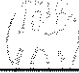


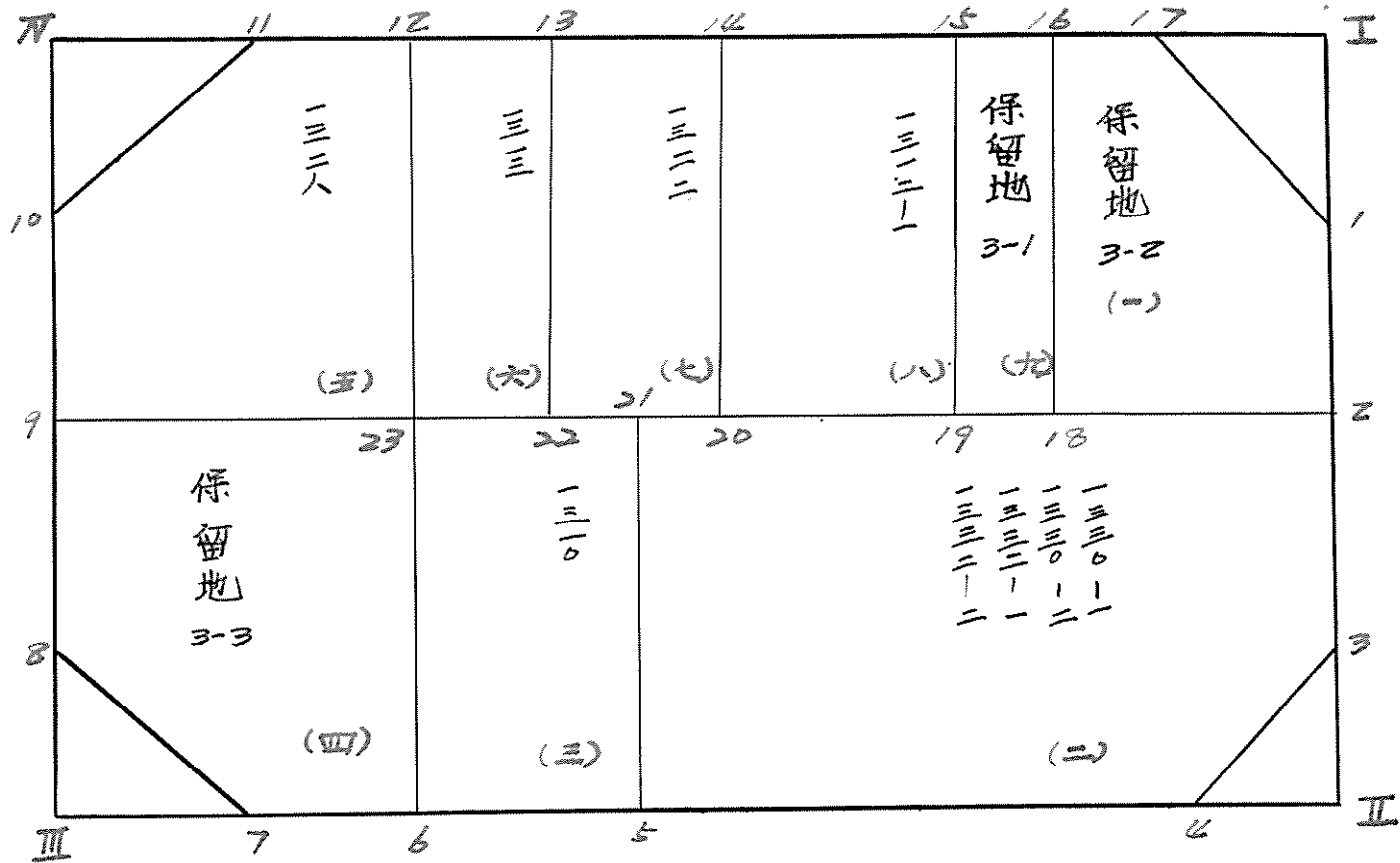
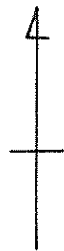
備考

隅切

Ⅱ
70

点	①	②	③	④	⑤	⑥	③ × ⑤		② × ⑥	
	X	X-(定数)	X _{n-1} -X _{n+1}	Y	Y-(定数)	Y _{n-1} -Y _{n+1}	+	-	+	-
7	491.709	^{490.} 1.709	+ 2.941	415.115	^{410.} 5.115	+ 0.176	15.043216		0.300784	
Ⅱ	491.892	1.892	- 3.124	412.126	2.126	+ 2.793		6.704164	5.284356	
8	494.833	4.833	+ 0.183	412.322	2.322	- 2.969	0.422926			12.329177
							15.468141	6.704104	5.585140	14.329177
							8.764037			8.764037
									1/2 = 4.3820185	
10	523.815	^{520.} 3.815	- 0.182	414.061	^{410.} 4.061	+ 2.990		0.739102	11.406850	
Ⅱ	526.824	6.824	- 2.827	414.221	4.221	- 3.170		11.989307		21.632080
11	526.642	6.642	+ 3.009	417.231	7.231	+ 0.180	2.758079		1.195560	
							21.758079	12.728009	12.602410	21.632080
							9.029670			9.029670
									1/2 = 4.514835	

面地略図	工区	ブロック	3	記入者		点検者	
------	----	------	---	-----	---	-----	---



面積計算書

工区

ブロック

3

計算者



精算者



備考

(一) 保留地 3-2
(二) 1330-1, 1330-2, 1332-1, 1332-2

点	①	②	③	④	⑤	⑥	③ ×	⑤	② ×	⑥
	X	X - (定数)	X _{n-1} - X _{n+1}	Y	Y - (定数)	Y _{n-1} - Y _{n+1}	+	-	+	-
1	520.779 ^{+500.}	20.779	+ 17.698	463.408	23.408 ^{+440.}	- 1.889	414.274784			39.251531
2	506.297	6.297	+ 13.673	462.533	22.533	+ 14.061	308.093709		88.542117	
10	507.106	7.106	- 18.320	449.347	9.347	+ 12.095		171.237040	85.947070	
16	524.617	24.617	- 16.889	450.438	10.438	- 11.297		176.287382		278.098249
17	523.995	23.995	+ 3.838	460.644	20.644	- 12.970	79.231672			311.215150
							801.600165	347.524422	174.489187	628.564930
							454.075743			454.075743
							× 1/2 = 227.0378715			
2	506.297 ^{+480.}	26.297	+ 15.935	462.533	32.533 ^{+430.}	- 22.887	518.413355			601.859439
3	491.820	11.820	+ 17.255	461.657	31.657	+ 4.017	546.241535		47.480940	
4	489.042	9.042	+ 1.500	458.516	28.516	+ 23.929	42.774000		216.366018	
5	490.320	10.320	- 18.713	437.728	7.728	+ 19.746		144.614064	203.778720	
21	507.755	27.755	- 15.777	438.770	8.770	- 24.805		140.118290		638.462775
							1107.428890	284.732354	467.625678	1290.322214
							822.696536			822.696536
							× 1/2 = 411.348268			

面積計算書

工区

ブロック

3

計算者

精算者

備考

(E)

1310

(四)

保留地 3-3

点	①	②	③	④	⑤	⑥	③ × ⑤	② × ⑥
	X	X - (定数)	X _{n-1} - X _{n+1}	Y	Y - (定数)	Y _{n-1} - Y _{n+1}	+	-
21	507.755 ^{+490.}	17.755	+ 17.981	438.770	18.770 ^{+420.}	- 7.858	337.503 370	
5	490.320	0.320	+ 16.888	437.728	17.728	+ 9.951	299.390 464	3.184 320
6	490.867	0.867	- 17.981	428.819	8.819	+ 7.858		158.574 439 6.312.886
23	508.301	18.301	- 16.888	429.870	9.870	- 9.951		166.684 560
							626.893 834	325.258 999
								7.997 206
								321.632 041
							311.634 835	
								311.634 835
								$\times \frac{1}{2} = 155.817 417 5$
23	508.301 ^{+490.}	18.301	+ 18.457	429.870	19.870 ^{+410.}	- 15.628	366.740 590	
6	490.867	0.867	+ 16.592	428.819	18.819	+ 14.755	312.244 848	12.792 585
7	491.709	1.709	- 3.966	415.115	5.115	+ 16.497		20.286 090
8	494.833	4.833	- 17.615	412.322	2.322	+ 1.924		28.193 373
9	509.324	19.324	- 13.468	413.191	3.191	- 17.548		40.902 030
								9.298 672
							42.976 388	
							678.985 438	104.164 508
								50.284 650
								625.105 580
							574.820 930	
								574.820 930
								$\times \frac{1}{2} = 287.410 465$

面積計算書

工
区

ブ
ロ
ック

3

計
算
者



積
算
者



備
考

(五)
(六)

1328

1313

点	①	②	③	④	⑤	⑥	③ ×	⑤	② ×	⑥
	X	X - (定数)	X _{n-1} - X _{n+1}	Y	Y - (定数)	Y _{n-1} - Y _{n+1}	+	-	+	-
12	525.806 ^{+500.}	25.806	+ 18.341	430.936 ^{+410.}	20.936	+ 12.639	383.987176			326.162024
23	508.301	8.301	+ 16.482	429.870	19.870	+ 17.745	327.497340		147.301245	
9	509.324	9.324	- 15.514	413.191	3.191	+ 15.809		49.505174	127.403116	
10	523.815	23.815	- 17.318	414.061	4.061	- 4.040		70.328398		96.212600
11	526.642	26.642	- 1.991	417.231	7.231	- 16.875		14.396921		449.593750
							711.484516	134.230493	294.704361	871.958384
							577.254023			577.254023
							$\times \frac{1}{2} = 288.6270115$			
13	525.428 ^{+500.}	25.428	+ 17.885	437.136 ^{+420.}	17.136	- 5.127	306.477360			130.369356
22	507.921	7.921	+ 17.127	436.063	16.063	+ 7.266	275.111001		57.553986	
23	508.301	8.301	- 17.885	429.870	9.870	+ 5.127		176.524950	42.559227	
12	525.806	25.806	- 17.127	430.936	10.936	- 7.266		187.300872		187.506896
							581.588361	363.825822	100.113213	317.875752
							217.762539			217.762539
							$\times \frac{1}{2} = 108.8812695$			

面積計算書

工区

ブロック

3

計算者

精算者

備考 (七) (八)

1322

1312-

点	①	②	③	④	⑤	⑥	③ × ⑤	② × ⑥
	X	X - (定数)	X _{n-1} - X _{n+1}	Y	Y - (定数)	Y _{n-1} - Y _{n+1}	+	-
14	525.178 ^{+500.}	25.178	+ 17.758	441.238 ^{+430.}	11.238	- 3.022	199,564,404	76,087,916
20	507.670	7.670	+ 17.257	440.158	10.158	+ 5.175	175,296,606	39,692,250
22	507.921	7.921	- 17.758	436.063	6.063	+ 3.022	107,666,754	23,937,262
13	525.428	25.428	- 17.257	437.136	7.136	- 5.175	123,105,952	131,589,900
							374,861,010	230,812,706
							144,048,304	63,629,512
								207,677,816
								144,048,304
								$\times 1/2 = 72,024,152$
15	524.739 ^{+500.}	24.739	+ 17.950	448.435 ^{+440.}	8.435	- 6.112	151,408,250	151,204,768
19	507.228	7.228	+ 17.069	447.350	7.350	+ 8.277	125,457,150	59,826,156
20	507.670	7.670	- 17.950	440.158	0.158	+ 6.112	2,836,100	46,879,040
14	525.178	25.178	- 17.069	441.238	1.238	- 8.277	21,131,422	208,398,306
							276,865,400	23,967,522
							252,897,878	106,705,196
								359,603,074
								252,897,878
								$\times 1/2 = 126,448,939$

面積計算書

工区

ブロック

3

計算者



精算者



備考

(九) 保留地 3-1

点	①	②	③	④	⑤	⑥	③ × ⑤		② × ⑥	
	X	X - (定数)	X _{n-1} - X _{n+1}	Y	Y - (定数)	Y _{n-1} - Y _{n+1}	+	-	+	-
16	524.617	^{+500.} 24.617	+ 17.633	450.438	^{+440.} 10.438	- 0.912	184.053254			22.450704
18	507.106	7.106	+ 17.389	449.347	9.347	+ 3.088	162.534983		21.943328	
19	507.228	7.228	- 17.633	447.350	7.350	+ 0.912		129.602550	6.591936	
15	524.739	24.739	- 17.389	448.435	8.435	- 3.088		146.676215		76.374032
							346.588237	276.278765	28.535264	98.844736
							70.309472			70.309472
								× 1/2 = 35.154736		

