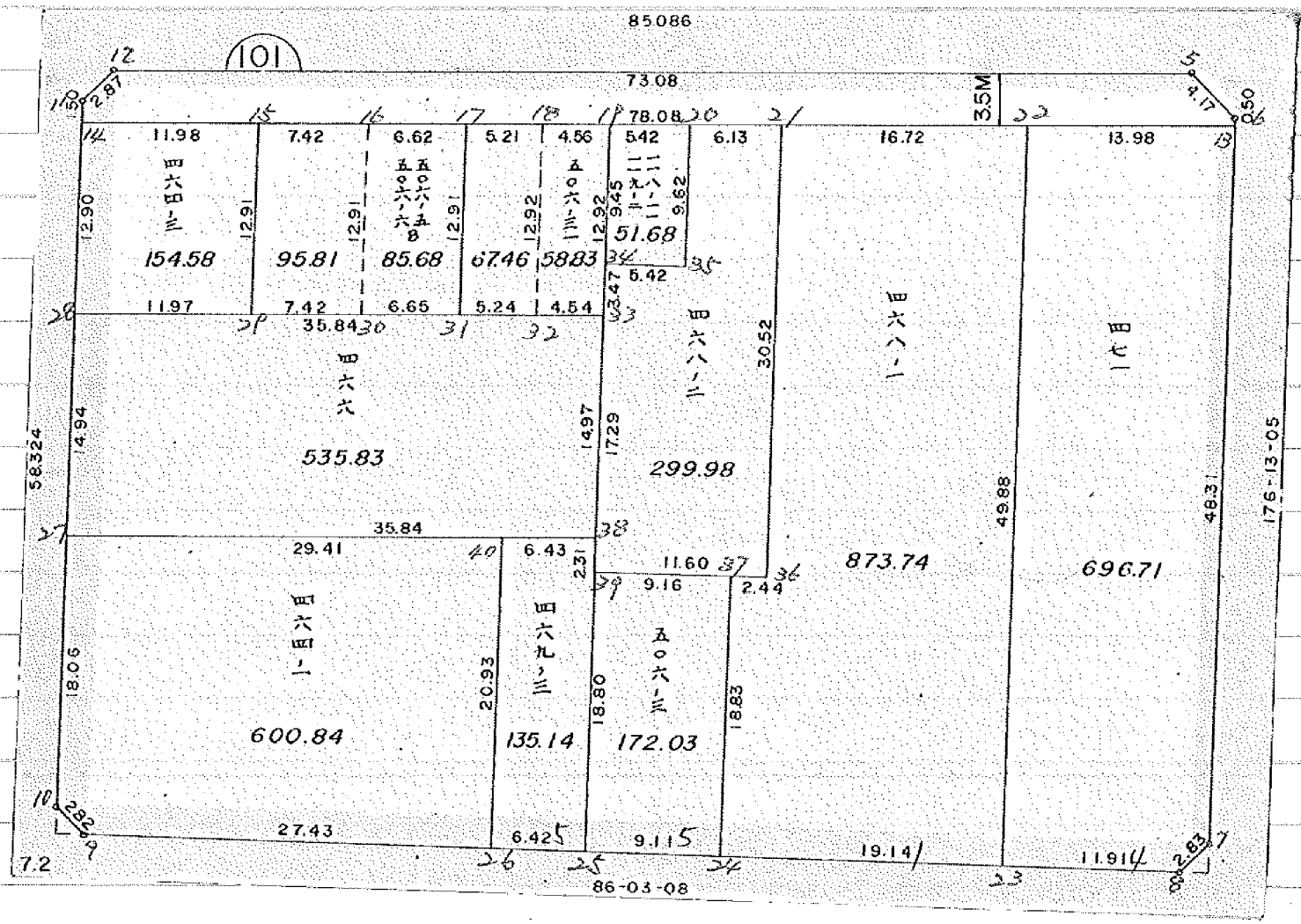


面地確定計算書

BLOCK NO. 101



* * * * * KAKUHITSU MENSEKI KESAN-SHO * * * * *

BLOCK . LOT KAKUHITSU MENSEKI SUMIKIRI.SUIRO MENSEKI

101 BLOCK 4095.176714

1 LOT 696.716826
2 LOT 873.741998
3 LOT 172.036581
4 LOT 135.143387
5 LOT 600.845880
6 LOT 535.838427
7 LOT 154.586048
8 LOT 95.818297
9 LOT 85.689175
10 LOT 67.462003
11 LOT 58.831460
12 LOT 51.684707
13 LOT 299.989597
λ10 266.804463

1 λ3λ 4.496653
2 λ3λ 2.000118
3 λ3λ 2.000118
4 λ3λ 1.999154

TOTAL = 4095.188849 10.496043

* * * * * M E N S E K I K E I S A N * * * * *

101 BLOCK

TENMEI	X	Y	(X-X0)*(YN-1-Y0)	(XN-1-X0)*(Y-Y0)
X0.Y0	- 150000.000	- 38600.000		
OS101-5	- 150089.555	- 38691.946		
OS101-6	- 150092.249	- 38688.763	+ 8481.926554	+ 7949.170465
OS101-7	- 150140.962	- 38685.543	+ 12512.210006	+ 7891.256207
OS101-8	- 150143.096	- 38687.406	+ 12240.861128	+ 12320.924572
OS101-9	- 150148.191	- 38761.255	+ 12952.782546	+ 23074.945480
OS101-10	- 150146.333	- 38763.382	+ 23596.927915	+ 24211.741962
OS101-11	- 150099.023	- 38766.521	+ 16178.575786	+ 24367.517493
OS101-12	- 150096.323	- 38764.663	+ 16123.895388	+ 16305.424249
OS101-5	- 150089.555	- 38691.946	+ 14746.394965	+ 8902.947288
			+116833.574287	+125023.927716
		BAI MENSEKI =	8190.353429	
		MENSEKI =	4095.176714	

1 LOT

TENMEI	X	Y	(X-X0)*(YN-1-Y0)	(XN-1-X0)*(Y-Y0)
X0.Y0	- 150000.000	- 38600.000		
OS101-13	- 150092.750	- 38688.730		
OS101-7	- 150140.962	- 38685.543	+ 12507.558260	+ 7934.113250
OS101-8	- 150143.096	- 38687.406	+ 12240.861128	+ 12320.924572
OS101-23	- 150143.916	- 38699.291	+ 12579.121896	+ 14208.144936
OS101-22	- 150094.143	- 38702.647	+ 9347.552613	+ 14772.545652
OS101-13	- 150092.750	- 38688.730	+ 9520.509250	+ 8353.308390
			+ 56195.603147	+ 57589.036800
		BAI MENSEKI =	1393.433653	
		MENSEKI =	696.716826	

~~2 LOT~~

TENMEI	X	Y	(X-X0)*(YN-1-Y0)	(XN-1-X0)*(Y-Y0)
X0.Y0	- 150000.000	- 38600.000		
OS101-23	- 150143.916	- 38699.291		
OS101-24	- 150145.234	- 38718.386	+ 14420.429094	+ 17037.639576
OS101-37	- 150126.437	- 38719.606	+ 14968.370682	+ 17370.857804
OS101-36	- 150126.261	- 38717.168	+ 15101.573166	+ 14814.370416
OS101-21	- 150095.807	- 38719.285	+ 11225.514576	+ 15061.043385
OS101-22	- 150094.143	- 38702.647	+ 11229.847755	+ 9834.301129
OS101-23	- 150143.916	- 38699.291	+ 14772.545652	+ 9347.552613
			+ 81718.280925	+ 83465.764922
		BAI MENSEKI =	1747.483997	
		MENSEKI =	873.741998	

* * * * * M E N S E K I K E I S A N * * * * *

3 LOT

TE N M E I	X	Y	(X-X0)*(YN-1-Y0)	(XN-1-X0)*(Y-Y0)
X0.Y0	- 150100.000	- 38700.000		
OS101-24	- 150145.234	- 38718.386		
OS101-25	- 150145.862	- 38727.480	+ 343.218732	+ 1243.030320
OS101-39	- 150127.097	- 38728.747	+ 744.625560	+ 1318.394914
OS101-37	- 150126.437	- 38719.606	+ 759.934439	+ 531.263782
OS101-24	- 150145.234	- 38718.386	+ 886.857804	+ 486.070682
			+ 3234.686535	+ 3578.759698
		BAI MENSEKI =	344.073163	
		MENSEKI =	172.036581	

4 LOT

TE N M E I	X	Y	(X-X0)*(YN-1-Y0)	(XN-1-X0)*(Y-Y0)
X0.Y0	- 150100.000	- 38700.000		
OS101-25	- 150145.862	- 38727.480		
OS101-26	- 150146.304	- 38733.889	+ 1272.433920	+ 1554.217318
OS101-40	- 150125.422	- 38735.306	+ 861.526158	+ 1634.809024
OS101-38	- 150124.790	- 38728.903	+ 875.235740	+ 734.772066
OS101-39	- 150127.097	- 38728.747	+ 783.184591	+ 712.638130
OS101-25	- 150145.862	- 38727.480	+ 1318.394914	+ 744.625560
			+ 5110.775323	+ 5381.062098
		BAI MENSEKI =	270.286775	
		MENSEKI =	135.143387	

5 LOT

TE N M E I	X	Y	(X-X0)*(YN-1-Y0)	(XN-1-X0)*(Y-Y0)
X0.Y0	- 150100.000	- 38700.000		
OS101-26	- 150146.304	- 38733.889		
OS101-9	- 150148.191	- 38761.255	+ 1633.144799	+ 2836.351520
OS101-10	- 150146.333	- 38763.382	+ 2838.127915	+ 3054.441962
OS101-27	- 150128.313	- 38764.577	+ 1794.534566	+ 2992.046141
OS101-40	- 150125.422	- 38735.306	+ 1641.676494	+ 999.618778
OS101-26	- 150146.304	- 38733.889	+ 1634.809024	+ 861.526158
			+ 9542.292798	+ 10743.984559
		BAI MENSEKI =	1201.691761	
		MENSEKI =	600.845880	

6 LOT

TE N M E I	X	Y	(X-X0)*(YN-1-Y0)	(XN-1-X0)*(Y-Y0)
X0.Y0	- 150100.000	- 38700.000		
OS101-27	- 150128.313	- 38764.577		
OS101-28	- 150113.401	- 38765.566	+ 865.396377	+ 1856.370158

* * * * * M E N S E K I K E I S A N * * * * *

TENMEI	X	Y	(X-X0)*(YN-1-Y0)	(XN-1-X0)*(Y-Y0)
OS101-29	- 150112.214	- 38753.649	+ 800.823124	+ 718.950249
OS101-30	- 150111.479	- 38746.265	+ 615.836871	+ 565.080710
OS101-31	- 150110.820	- 38739.646	+ 500.587300	+ 455.096434
OS101-32	- 150110.301	- 38734.434	+ 408.393446	+ 372.575880
OS101-33	- 150109.851	- 38729.912	+ 339.209334	+ 308.123512
OS101-38	- 150124.790	- 38728.903	+ 741.518480	+ 284.723453
OS101-40	- 150125.422	- 38735.306	+ 734.772066	+ 875.235740
OS101-27	- 150128.313	- 38764.577	+ 999.618778	+ 1641.676494
			+ 6006.155776	+ 7077.832630
		BAI MENSEKI =	1071.676854	
		MENSEKI =	535.838427	

7 LOT

TENMEI	X	Y	(X-X0)*(YN-1-Y0)	(XN-1-X0)*(Y-Y0)
X0.Y0	- 150000.000	- 38700.000		
OS101-28	- 150113.401	- 38765.566		
OS101-14	- 150100.522	- 38766.422	+ 6590.825452	+ 7532.321222
OS101-15	- 150099.329	- 38754.496	+ 6597.630838	+ 5478.046912
OS101-29	- 150112.214	- 38753.649	+ 6115.214144	+ 5328.901521
OS101-28	- 150113.401	- 38765.566	+ 6083.850249	+ 7357.423124
			+ 25387.520683	+ 25696.692779
		BAI MENSEKI =	309.172096	
		MENSEKI =	154.586048	

8 LOT

TENMEI	X	Y	(X-X0)*(YN-1-Y0)	(XN-1-X0)*(Y-Y0)
X0.Y0	- 150000.000	- 38700.000		
OS101-15	- 150099.329	- 38754.496		
OS101-16	- 150098.590	- 38747.106	+ 5372.760640	+ 4678.991874
OS101-30	- 150111.479	- 38746.265	+ 5251.329774	+ 4561.266350
OS101-29	- 150112.214	- 38753.649	+ 5191.580710	+ 5980.736871
OS101-15	- 150099.329	- 38754.496	+ 5328.901521	+ 6115.214144
			+ 21144.572645	+ 21336.209239
		BAI MENSEKI =	191.636594	
		MENSEKI =	95.818297	変更後の資料なし

9 LOT

TENMEI	X	Y	(X-X0)*(YN-1-Y0)	(XN-1-X0)*(Y-Y0)
X0.Y0	- 150000.000	- 38700.000		
OS101-16	- 150098.590	- 38747.106		
OS101-17	- 150097.931	- 38740.516	+ 4613.137686	+ 3994.472440
OS101-31	- 150110.820	- 38739.646	+ 4489.983120	+ 3882.572426

***** MENSEKI KEISAN *****

TE NMEI	X	Y	(X-X0)*(YN-1-Y0)	(XN-1-X0)*(Y-Y0)
OS101-30	- 150111.479	- 38746.265	+ 4419.696434	+ 5127.037300
OS101-16	- 150098.590	- 38747.106	+ 4561.266350	+ 5251.329774
			+ 18084.083590	+ 18255.461940
		BAI MENSEKI =	171.378350	
		MENSEKI =	85.689175	変更後の資料なし

10 LOT

TE NMEI	X	Y	(X-X0)*(YN-1-Y0)	(XN-1-X0)*(Y-Y0)
X0.Y0	- 150000.000	- 38700.000		
OS101-17	- 150097.931	- 38740.516		
OS101-18	- 150097.412	- 38735.331	+ 3946.744592	+ 3460.000161
OS101-32	- 150110.301	- 38734.434	+ 3897.044631	+ 3354.284808
OS101-31	- 150110.820	- 38739.646	+ 3815.975880	+ 4372.993446
OS101-17	- 150097.931	- 38740.516	+ 3882.572426	+ 4489.983120
			+ 15542.337529	+ 15677.261535
		BAI MENSEKI =	134.924006	
		MENSEKI =	67.462003	変更後の資料なし

11 LOT

TE NMEI	X	Y	(X-X0)*(YN-1-Y0)	(XN-1-X0)*(Y-Y0)
X0.Y0	- 150000.000	- 38700.000		
OS101-18	- 150097.412	- 38735.331		
OS101-19	- 150096.958	- 38730.788	+ 3425.623098	+ 2999.120656
OS101-34	- 150106.387	- 38730.147	+ 3275.442956	+ 2922.992826
OS101-33	- 150109.851	- 38729.912	+ 3311.678097	+ 3182.247944
OS101-32	- 150110.301	- 38734.434	+ 3299.323512	+ 3782.609334
OS101-18	- 150097.412	- 38735.331	+ 3354.284808	+ 3897.044631
			+ 16666.352471	+ 16784.015391
		BAI MENSEKI =	117.662920	
		MENSEKI =	58.831460	

12 LOT

TE NMEI	X	Y	(X-X0)*(YN-1-Y0)	(XN-1-X0)*(Y-Y0)
X0.Y0	- 150000.000	- 38700.000		
OS101-19	- 150096.958	- 38730.788		
OS101-20	- 150096.418	- 38725.394	+ 2968.517384	+ 2462.151452
OS101-35	- 150106.019	- 38724.739	+ 2692.246486	+ 2385.284902
OS101-34	- 150106.387	- 38730.147	+ 2631.907993	+ 3196.154793
OS101-19	- 150096.958	- 38730.788	+ 2922.992826	+ 3275.442956
			+ 11215.664689	+ 11319.034103
		BAI MENSEKI =	103.369414	
		MENSEKI =	51.684707	

* * * * * M E N S E K I K E I S A N * * * * *

13 LGT

TENMEI	X	Y	(X-X0)*(YN-1-Y0)	(XN-1-X0)*(Y-Y0)
X0.Y0	- 150000.000	- 38700.000		
OS101-20	- 150096.418	- 38725.394		
OS101-21	- 150095.807	- 38719.285	+ 2432.922958	+ 1859.421130
OS101-36	- 150126.261	- 38717.168	+ 2434.943385	+ 1644.814576
OS101-37	- 150126.437	- 38719.606	+ 2170.670416	+ 2475.473166
OS101-39	- 150127.097	- 38728.747	+ 2491.863782	+ 3634.684439
OS101-38	- 150124.790	- 38728.903	+ 3587.338130	+ 3673.484591
OS101-33	- 150109.851	- 38729.912	+ 3175.023453	+ 3732.718480
OS101-34	- 150106.387	- 38730.147	+ 3182.247944	+ 3311.678097
OS101-35	- 150106.019	- 38724.739	+ 3196.154793	+ 2631.907993
OS101-20	- 150096.418	- 38725.394	+ 2385.284902	+ 2692.246486
			+ 25056.449763	+ 25656.428958
		BAI MENSEKI =	599.979195	
		MENSEKI =	299.989597	

λ10

TENMEI	X	Y	(X-X0)*(YN-1-Y0)	(XN-1-X0)*(Y-Y0)
X0.Y0	- 150000.000	- 38600.000		
OS101-5	- 150089.555	- 38691.946		
OS101-6	- 150092.249	- 38688.763	+ 8481.926554	+ 7949.170465
OS101-13	- 150092.750	- 38688.730	+ 8232.768250	+ 8185.253770
OS101-22	- 150094.143	- 38702.647	+ 8353.308390	+ 9520.509250
OS101-21	- 150095.807	- 38719.285	+ 9834.301129	+ 11229.847755
OS101-20	- 150096.418	- 38725.394	+ 11501.221130	+ 12013.622958
OS101-19	- 150096.958	- 38730.788	+ 12157.951452	+ 12610.317384
OS101-18	- 150097.412	- 38735.331	+ 12740.320656	+ 13121.423098
OS101-17	- 150097.931	- 38740.516	+ 13253.100161	+ 13687.944592
OS101-16	- 150098.590	- 38747.106	+ 13853.472440	+ 14406.237686
OS101-15	- 150099.329	- 38754.496	+ 14611.891874	+ 15231.760640
OS101-14	- 150100.522	- 38766.422	+ 15530.246912	+ 16530.530838
OS101-11	- 150099.023	- 38766.521	+ 16479.605706	+ 16739.023962
OS101-12	- 150096.828	- 38764.663	+ 16123.895388	+ 16305.424249
OS101-5	- 150089.555	- 38691.946	+ 14746.394965	+ 8902.947288
			+175900.405004	+176434.013929
		BAI MENSEKI =	533.608926	
		MENSEKI =	266.804463	

1 λ319

TENMEI	X	Y	(X-X0)*(YN-1-Y0)	(XN-1-X0)*(Y-Y0)
X0.Y0	- 150000.000	- 38600.000		
OS101-1	- 150089.256	- 38688.961		
OS101-5	- 150089.555	- 38691.946	+ 7966.902355	+ 8206.732176

* * * * * M E N S E K I K E I S A N * * * * *

TENMEI	X	Y	(X-X0)*(YN-1-Y0)	(XN-1-X0)*(Y-Y0)
OS101-6	- 150092.249	- 38688.763	+ 8481.926554	+ 7949.170465
OS101-1	- 150089.256	- 38688.961	+ 7922.630328	+ 8206.563289
			+ 24371.459237	+ 24362.465930
		BAI MENSEKI =	8.993307	
		MENSEKI =	4.496653	

2 入三判

TENMEI	X	Y	(X-X0)*(YN-1-Y0)	(XN-1-X0)*(Y-Y0)
X0.Y0	- 150100.000	- 38600.000		
OS101-2	- 150142.958	- 38685.411		
OS101-7	- 150140.962	- 38685.543	+ 3498.605382	+ 3674.756194
OS101-8	- 150143.096	- 38687.406	+ 3686.561128	+ 3580.324572
OS101-2	- 150142.958	- 38685.411	+ 3754.786948	+ 3680.872456
			+ 10939.953458	+ 10935.953222
		BAI MENSEKI =	4.000236	
		MENSEKI =	2.000118	

3 入三判

TENMEI	X	Y	(X-X0)*(YN-1-Y0)	(XN-1-X0)*(Y-Y0)
X0.Y0	- 150100.000	- 38700.000		
OS101-3	- 150148.329	- 38763.250		
OS101-9	- 150148.191	- 38761.255	+ 3048.080750	+ 2960.392895
OS101-10	- 150146.333	- 38763.382	+ 2838.127915	+ 3054.441962
OS101-3	- 150148.329	- 38763.250	+ 3063.188678	+ 2930.562250
			+ 8949.397343	+ 8945.397107
		BAI MENSEKI =	4.000236	
		MENSEKI =	2.000118	

4 入三判

TENMEI	X	Y	(X-X0)*(YN-1-Y0)	(XN-1-X0)*(Y-Y0)
X0.Y0	- 150000.000	- 38700.000		
OS101-4	- 150097.027	- 38766.653		
OS101-11	- 150099.023	- 38766.521	+ 6600.180019	+ 6454.333067
OS101-12	- 150096.828	- 38764.663	+ 6441.095388	+ 6403.124249
OS101-4	- 150097.027	- 38766.653	+ 6274.056901	+ 6453.876684
			+ 19315.332308	+ 19311.334000
		BAI MENSEKI =	3.998308	
		MENSEKI =	1.999154	

101 Block



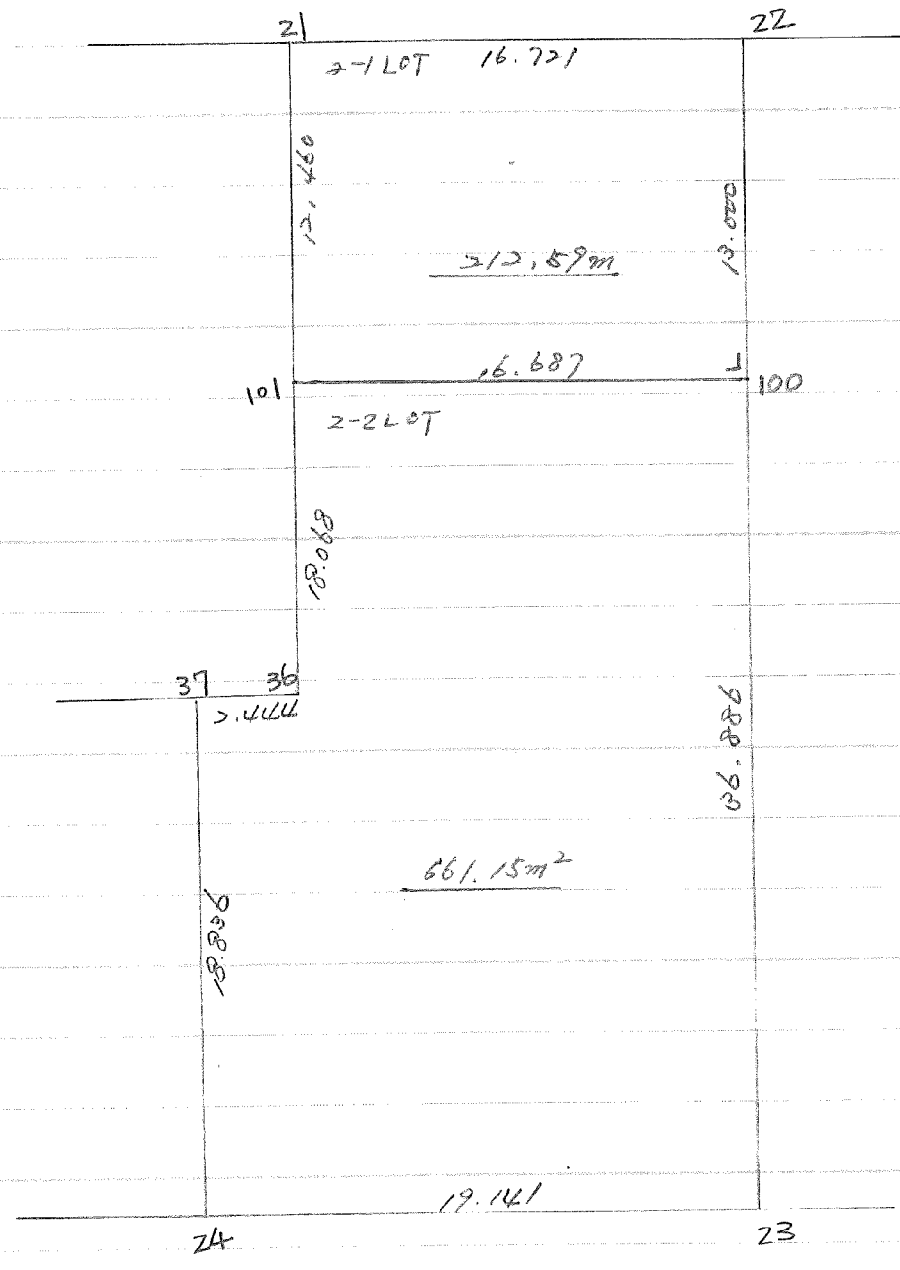
2-2 LOT

元NO. X ₀ Y ₀	X	Y	(X-X ₀)(Y _{N-1} -Y ₀)	(X _{N-1} -X ₀)(Y-Y ₀)
101	-150100.000	-38600.000		
100	-150108.237	-38718.421	842.446994	838.295964
23	-150107.114	-38701.772	4469.419152	706.356174
103	-150143.916	-38699.291	4387.768581	4535.732312
104	-150144.191	-38703.282	1830.157040	4643.015797
102	-150117.720	-38705.067	1951.304324	2085.697160
101	-150118.572	-38717.703	969.519611	2199.314812
	-150108.237	-38718.421		
			14450.615702	15008.412219
			0°イノセキ=	557.796517
			ノセキ=	278.898258

2-3 LOT

元NO. X ₀ Y ₀	X	Y	(X-X ₀)(Y _{N-1} -Y ₀)	(X _{N-1} -X ₀)(Y-Y ₀)
104	-150100.000	-38700.000		
103	-150117.720	-38705.067	223.915797	58.157040
24	-150144.191	-38703.282	148.457988	812.495726
37	-150145.234	-38718.386	486.070682	886.857804
36	-150126.437	-38719.606	514.873166	453.870416
102	-150126.261	-38717.168	318.844096	464.898483
104	-150118.572	-38717.703	313.697160	94.104324
	-150117.720	-38705.067		
			2005.858889	2770.383793
			0°イノセキ=	764.524904
			ノセキ=	382.262452

101 Block



2-1 LOT

NO.	X	Y	(X-X ₀)(Y _{N-1} -Y ₀)	(X _{N-1} -X ₀)(Y-Y ₀)
X ₀ Y ₀	-150000.000	-38700.000		
21	-150095.807	-38719.285		
22	-150094.143	-38702.647	1815.547755	253.601129
100	-150107.114	-38701.772	283.530758	166.821396
101	-150108.237	-38718.421	191.795964	1973.146994
21	-150095.807	-38719.285	1764.860747	2087.350545
			4055.735224	4480.920064
			平均Xセキ=	425.184840
			平均Yセキ=	212.592420

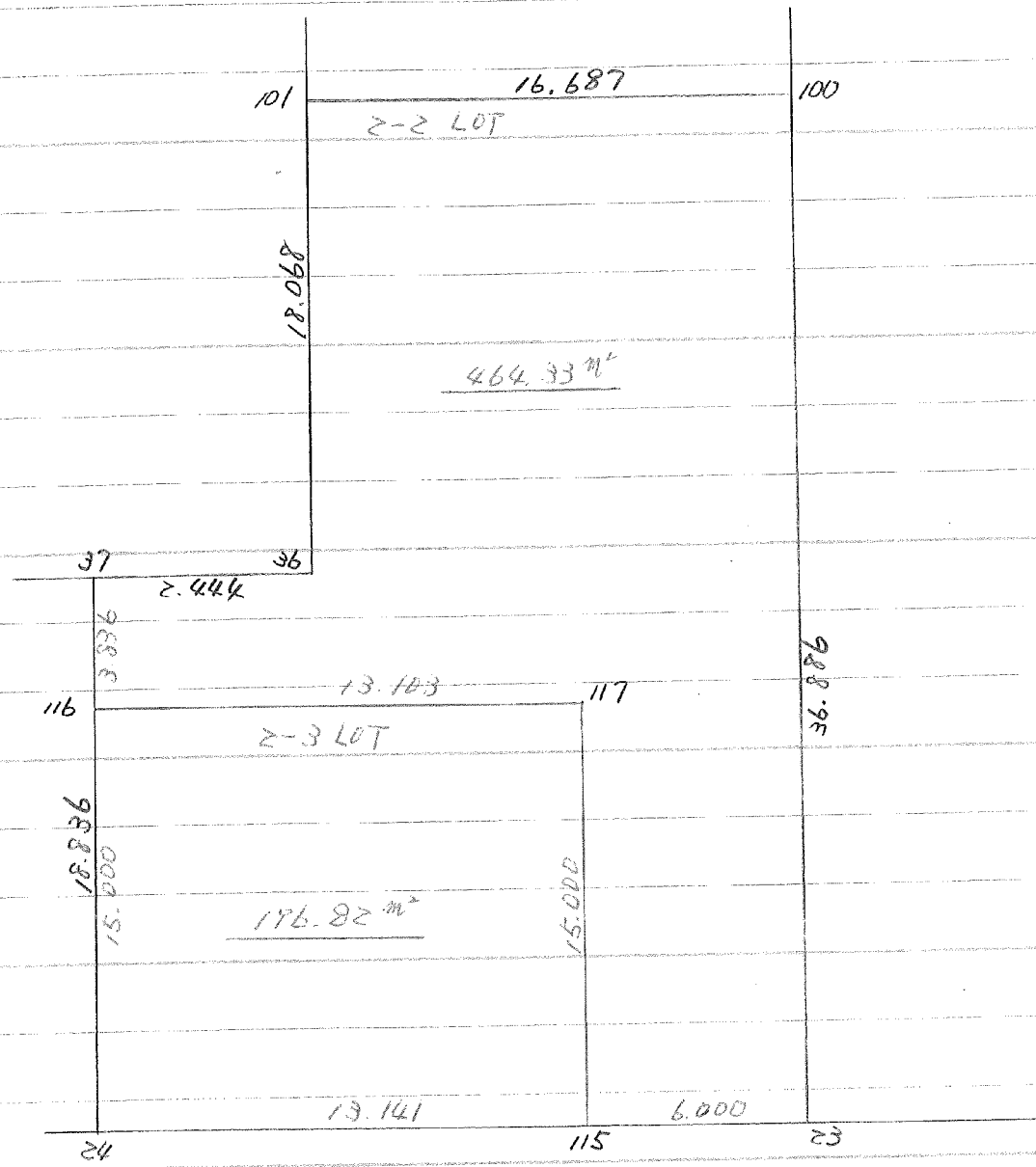
2-2 LOT

NO.	X	Y	(X-X ₀)(Y _{N-1} -Y ₀)	(X _{N-1} -X ₀)(Y-Y ₀)
X ₀ Y ₀	-150100.000	-38600.000		
100	-150107.114	-38701.772		
23	-150143.916	-38699.291	4469.419152	706.356174
24	-150145.234	-38718.386	4491.329094	5199.039576
37	-150126.437	-38719.606	3129.770682	5410.257804
36	-150126.261	-38717.168	3140.973166	3097.570416
101	-150108.237	-38718.421	965.112816	3109.853881
100	-150107.114	-38701.772	842.446994	838.295964
			17039.051904	18361.373815
			平均Xセキ=	1322.321911
			平均Yセキ=	441.160755
				661.15

検分=59

873.74 - 212.59 = 661.15

101 BLOCK



2-2 LOT

元NO. X ₀ Y ₀	X	Y	(X-X ₀)(Y _{N-1} -Y ₀)	(X _{N-1} -X ₀)(Y-Y ₀)
100	-150107.114	-38701.772		
23	-150143.916	-38699.291	4469.419152	706.356174
115	-150144.329	-38705.277	4401.470739	4623.344732
117	-150129.363	-38706.286	3091.248551	4711.552094
116	-150130.265	-38719.358	3216.745790	3504.708954
37	-150126.437	-38719.606	3155.467446	3619.875590
36	-150126.261	-38717.168	3140.973166	3097.570416
101	-150108.237	-38718.421	965.112816	3109.853881
100	-150107.114	-38701.772	842.446994	838.295964
			23282.884654	24211.557805
			イメジキ=	928.673151
			スジキ=	464.336575

2-3 LOT

元NO. X ₀ Y ₀	X	Y	(X-X ₀)(Y _{N-1} -Y ₀)	(X _{N-1} -X ₀)(Y-Y ₀)
115	-150144.329	-38705.277		
24	-150145.234	-38718.386	238.699818	815.032994
116	-150130.265	-38719.358	556.452290	875.639772
117	-150129.363	-38706.286	568.408954	190.245790
115	-150144.329	-38705.277	278.652094	154.948551
			1642.213156	2035.867107
			イメジキ=	393.653951
			スジキ=	196.826975