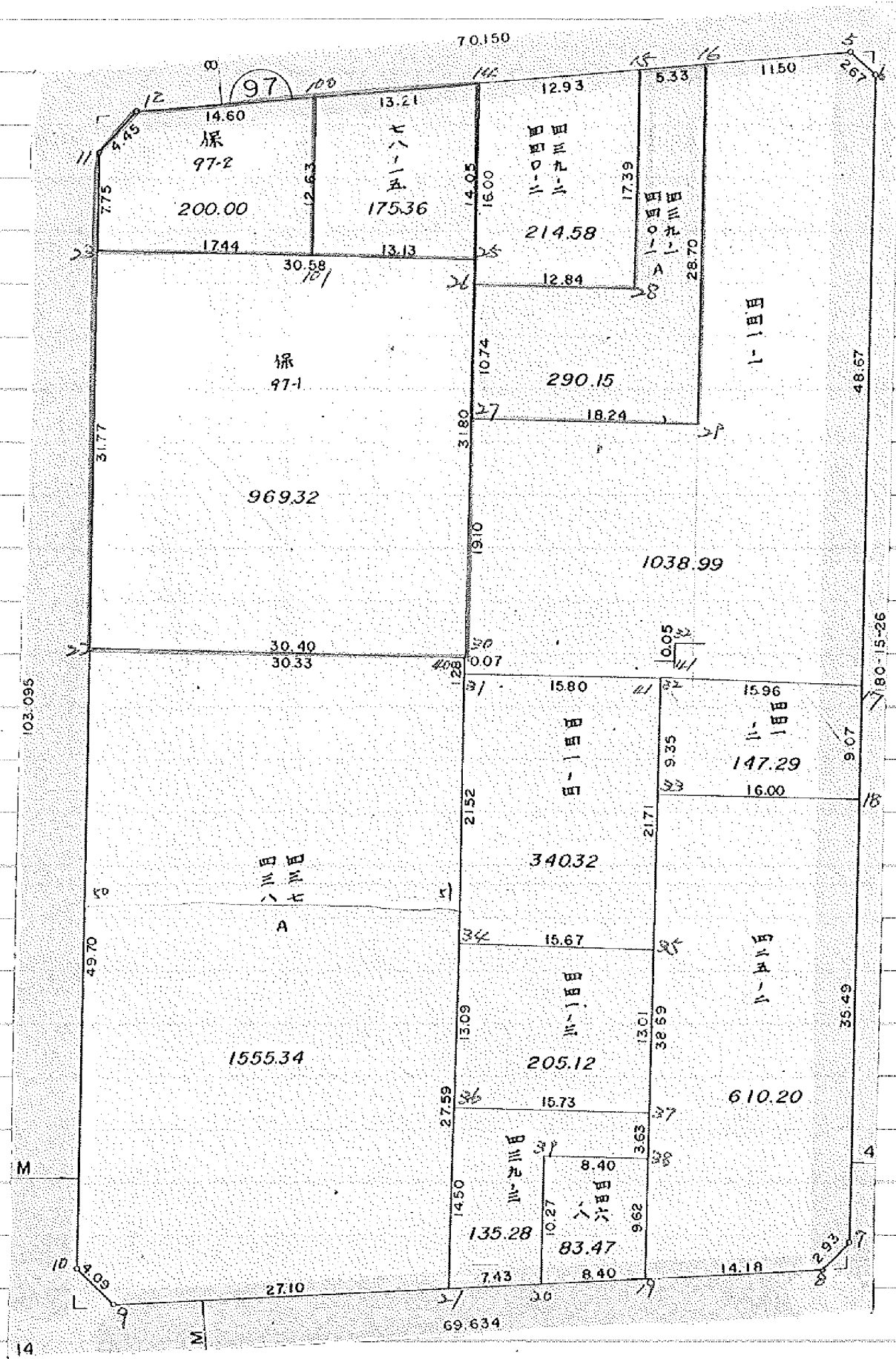


画地確定計算書

BLOCK NO. 97

- 確定以後変更
- 換地計画準備の特等区
- 保留地変更 556.12



14

\* \* \* \* \* KAKUHITSU MENSEKI KESAN-SHO \* \* \* \* \*

BLOCK . LOT KAKUHITSU MENSEKI SUMIKIRI, SUIRO MENSEKI

97 BLOCK 5965.449244

1 LOT	1038.991881	
2 LOT	147.296983	
3 LOT	610.203014	
4 LOT	83.479580	
5 LOT	135.283840	
6 LOT	1555.341571	
7 LOT	205.124364	
8 LOT	340.328313	
9 LOT	969.329777	
10 LOT	200.316980	200.000662
11 LOT	175.055870	175.962782
12 LOT	214.588852	19.005616
13 LOT	290.156967	290.15395
1 刈		1.989100
2 刈		1.994383
3 刈		4.489090
4 刈		4.476900

TOTAL = 5965.497992 12.949473

\* \* \* \* \* M E N S E K I K E I S A N \* \* \* \* \*

97 BLOCK

TENMEI	X	Y	(X-X0)*(YN-1-Y0)	(XN-1-X0)*(Y-Y0)
X0.Y0	- 150100.000	- 38900.000		
OS97-5	- 150118.034	- 38976.250		
OS97-6	- 150119.834	- 38974.269	+ 1512.342500	+ 1339.367146
OS97-7	- 150213.079	- 38974.688	+ 8398.264251	+ 1481.361792
OS97-8	- 150215.216	- 38976.692	+ 8605.252608	+ 8672.254668
OS97-9	- 150219.125	- 39033.686	+ 9135.934500	+ 15402.766176
OS97-10	- 150216.330	- 39036.675	+ 15551.692380	+ 16281.409375
OS97-11	- 150127.090	- 39036.549	+ 3702.525750	+ 15884.745170
OS97-12	- 150123.790	- 39033.560	+ 3248.500710	+ 3618.140400
OS97-5	- 150118.034	- 38976.250	+ 2408.621040	+ 1813.987500
			+ 52563.133739	+ 64494.032227
		BAI MENSEKI =	11930.898488	
		MENSEKI =	5965.449244	

1 LOT

TENMEI	X	Y	(X-X0)*(YN-1-Y0)	(XN-1-X0)*(Y-Y0)
X0.Y0	- 150100.000	- 38900.000		
OS97-5	- 150118.034	- 38976.250		
OS97-6	- 150119.834	- 38974.269	+ 1512.342500	+ 1339.367146
OS97-17	- 150168.504	- 38974.487	+ 5087.723576	+ 1477.375158
OS97-32	- 150168.136	- 38990.451	+ 5075.246232	+ 6196.255304
OS97-41	- 150168.188	- 38990.451	+ 6167.672788	+ 6162.969336
OS97-31	- 150168.143	- 39006.256	+ 6163.602493	+ 7245.384128
OS97-40	- 150166.854	- 39006.271	+ 7103.638624	+ 7241.624753
OS97-30	- 150166.855	- 39006.197	+ 7104.747705	+ 7099.694238
OS97-27	- 150147.759	- 39006.063	+ 5071.862523	+ 7090.841865
OS97-29	- 150147.887	- 38987.818	+ 5079.038881	+ 4194.099862
OS97-16	- 150119.184	- 38987.702	+ 1684.700512	+ 4199.785674
OS97-5	- 150118.034	- 38976.250	+ 1581.617868	+ 1462.780000
			+ 51632.193702	+ 53710.177464
		BAI MENSEKI =	2077.983762	
		MENSEKI =	1038.991881	

2 LOT

TENMEI	X	Y	(X-X0)*(YN-1-Y0)	(XN-1-X0)*(Y-Y0)
X0.Y0	- 150100.000	- 38900.000		
OS97-17	- 150168.504	- 38974.487		
OS97-18	- 150177.582	- 38974.528	+ 5778.850434	+ 5105.466112
OS97-33	- 150177.490	- 38990.527	+ 5775.174720	+ 7023.265714
OS97-41	- 150168.188	- 38990.451	+ 6172.855076	+ 7009.047990
OS97-32	- 150168.136	- 38990.451	+ 6162.969336	+ 6167.672788
OS97-17	- 150168.504	- 38974.487	+ 6196.255304	+ 5075.246232

\* \* \* \* \* M E N S E K I K E I S A N \* \* \* \* \*

TENMEI	X	Y	(X-X0)*(YN-1-Y0)	(XN-1-X0)*(Y-Y0)
			+ 30086.104870	+ 30380.698836
		BAI MENSEKI =	294.593966	
		MENSEKI =	147.296983	

3 LOT

TENMEI	X	Y	(X-X0)*(YN-1-Y0)	(XN-1-X0)*(Y-Y0)
X0.Y0	- 150100.000	- 38900.000		
OS97-18	- 150177.582	- 38974.528		
OS97-7	- 150213.079	- 38974.688	+ 8427.551712	+ 5794.444416
OS97-8	- 150215.216	- 38976.692	+ 8605.252608	+ 8672.254668
OS97-19	- 150216.187	- 38990.844	+ 8910.613404	+ 10466.682304
OS97-38	- 150206.561	- 38990.765	+ 9680.427484	+ 10545.713055
OS97-37	- 150202.924	- 38990.735	+ 9341.896860	+ 9668.812335
OS97-35	- 150189.905	- 38990.628	+ 8157.530175	+ 9327.796272
OS97-33	- 150177.490	- 38990.527	+ 7022.763720	+ 8138.829935
OS97-18	- 150177.582	- 38974.528	+ 7023.265714	+ 5775.174720
			+ 67169.301677	+ 68389.707705
		BAI MENSEKI =	1220.406028	
		MENSEKI =	610.203014	

4 LOT

TENMEI	X	Y	(X-X0)*(YN-1-Y0)	(XN-1-X0)*(Y-Y0)
X0.Y0	- 150200.000	- 38900.000		
OS97-19	- 150216.187	- 38990.844		
OS97-20	- 150216.762	- 38999.230	+ 1522.727128	+ 1606.236010
OS97-39	- 150206.491	- 38999.165	+ 644.101930	+ 1662.203730
OS97-38	- 150206.561	- 38990.765	+ 650.621565	+ 589.155615
OS97-19	- 150216.187	- 38990.844	+ 1469.213055	+ 596.027484
			+ 4286.663678	+ 4453.622839
		BAI MENSEKI =	166.959161	
		MENSEKI =	83.479580	

5 LOT

TENMEI	X	Y	(X-X0)*(YN-1-Y0)	(XN-1-X0)*(Y-Y0)
X0.Y0	- 150200.000	- 38900.000		
OS97-20	- 150216.762	- 38999.230		
OS97-21	- 150217.271	- 39006.644	+ 1713.801330	+ 1787.566728
OS97-36	- 150202.772	- 39006.465	+ 295.617168	+ 1838.757015
OS97-37	- 150202.924	- 38990.735	+ 311.303660	+ 251.517420
OS97-38	- 150206.561	- 38990.765	+ 595.312335	+ 265.396860
OS97-39	- 150206.491	- 38999.165	+ 589.155615	+ 650.621565
OS97-20	- 150216.762	- 38999.230	+ 1662.203730	+ 644.101930

\* \* \* \* \* M E N S E K I K E I S A N \* \* \* \* \*

TENMEI	X	Y	(X-X0)*(YN-1-Y0)	(XN-1-X0)*(Y-Y0)
			+ 5167.393838	+ 5437.961513
		BAI MENSEKI =	270.567680	
		MENSEKI =	135.283840	

7LOTと合筆あり

6 LOT

TENMEI	X	Y	(X-X0)*(YN-1-Y0)	(XN-1-X0)*(Y-Y0)
X0.Y0	- 150100.000	- 39000.000		
OS97-21	- 150217.271	- 39006.644		
OS97-9	- 150219.125	- 39033.686	+ 791.466500	+ 3950.390906
OS97-10	- 150216.330	- 39036.675	+ 3918.692380	+ 4368.909375
OS97-22	- 150166.622	- 39036.605	+ 2443.361850	+ 4258.259650
OS97-40	- 150166.854	- 39006.271	+ 2447.190670	+ 417.786562
OS97-31	- 150168.143	- 39006.256	+ 427.324753	+ 418.238624
OS97-34	- 150189.668	- 39006.303	+ 560.963008	+ 429.505329
OS97-36	- 150202.772	- 39006.465	+ 647.771916	+ 579.703620
OS97-21	- 150217.271	- 39006.644	+ 758.157015	+ 682.817168
			+ 11994.928092	+ 15105.611234
		BAI MENSEKI =	3110.683142	
		MENSEKI =	1555.341571	

変更後の資料なし

7 LOT

TENMEI	X	Y	(X-X0)*(YN-1-Y0)	(XN-1-X0)*(Y-Y0)
X0.Y0	- 150100.000	- 38900.000		
OS97-34	- 150189.668	- 39006.303		
OS97-35	- 150189.905	- 38990.628	+ 9557.171215	+ 8126.431504
OS97-37	- 150202.924	- 38990.735	+ 9327.796272	+ 8157.530175
OS97-36	- 150202.772	- 39006.465	+ 9325.017420	+ 10957.803660
OS97-34	- 150189.668	- 39006.303	+ 9546.503620	+ 10924.971916
			+ 37756.488527	+ 38166.737255
		BAI MENSEKI =	410.248728	
		MENSEKI =	205.124364	

5LOTと合筆あり

8 LOT

TENMEI	X	Y	(X-X0)*(YN-1-Y0)	(XN-1-X0)*(Y-Y0)
X0.Y0	- 150100.000	- 38900.000		
OS97-31	- 150168.143	- 39006.256		
OS97-41	- 150168.188	- 38990.451	+ 7245.384128	+ 6163.602493
OS97-33	- 150177.490	- 38990.527	+ 7009.047990	+ 6172.855076
OS97-35	- 150189.905	- 38990.628	+ 8138.829935	+ 7022.763720
OS97-34	- 150189.668	- 39006.303	+ 8126.431504	+ 9557.171215
OS97-31	- 150168.143	- 39006.256	+ 7243.805329	+ 9527.763008
			+ 37763.498886	+ 38444.155512
		BAI MENSEKI =	680.656626	
		MENSEKI =	340.328313	

\* \* \* \* \* M E N S E K I   K E I S A N   \* \* \* \* \*

9 LOT

TENMEI	X	Y	(X-X0)*(YN-1-Y0)	(XN-1-X0)*(Y-Y0)
X0.Y0	- 150100.000	- 39000.000		
OS97-22	- 150166.622	- 39036.605		
OS97-23	- 150134.847	- 39036.560	+ 1275.574435	+ 2435.700320
OS97-24	- 150134.970	- 39019.088	+ 1278.503200	+ 665.159536
OS97-25	- 150135.063	- 39005.974	+ 669.282544	+ 208.910780
OS97-26	- 150137.017	- 39005.988	+ 221.139558	+ 209.957244
OS97-27	- 150147.759	- 39006.063	+ 285.980892	+ 224.434071
OS97-30	- 150166.855	- 39006.197	+ 405.341865	+ 295.962523
OS97-40	- 150166.854	- 39006.271	+ 414.294238	+ 419.247705
OS97-22	- 150166.622	- 39036.605	+ 417.786562	+ 2447.190670
			+ 4967.903294	+ 6906.562849
		BAI MENSEKI =	1938.659555	
		MENSEKI =	969.329777	

10 LOT

TENMEI	X	Y	(X-X0)*(YN-1-Y0)	(XN-1-X0)*(Y-Y0)
X0.Y0	- 150100.000	- 39000.000		
OS97-23	- 150134.847	- 39036.560		
OS97-11	- 150127.090	- 39036.549	+ 990.410400	+ 1273.623003
OS97-12	- 150123.790	- 39033.560	+ 869.500710	+ 909.140400
OS97-13	- 150122.328	- 39019.001	+ 749.327680	+ 452.033790
OS97-24	- 150134.970	- 39019.088	+ 664.464970	+ 426.196864
OS97-23	- 150134.847	- 39036.560	+ 665.159536	+ 1278.503200
			+ 3938.863296	+ 4339.497257
		BAI MENSEKI =	400.633961	
		MENSEKI =	200.316980	

11 LOT

TENMEI	X	Y	(X-X0)*(YN-1-Y0)	(XN-1-X0)*(Y-Y0)
X0.Y0	- 150100.000	- 39000.000		
OS97-13	- 150122.328	- 39019.001		
OS97-14	- 150121.010	- 39005.876	+ 399.211010	+ 131.199328
OS97-25	- 150135.063	- 39005.974	+ 206.030188	+ 125.513740
OS97-24	- 150134.970	- 39019.088	+ 208.910780	+ 669.282544
OS97-13	- 150122.328	- 39019.001	+ 426.196864	+ 664.464970
			+ 1240.348842	+ 1590.460582
		BAI MENSEKI =	350.111740	
		MENSEKI =	175.055870	

12 LOT

TENMEI	X	Y	(X-X0)*(YN-1-Y0)	(XN-1-X0)*(Y-Y0)
X0.Y0	- 150100.000	- 38900.000		
OS97-14	- 150121.010	- 39005.876		
OS97-15	- 150119.717	- 38993.006	+ 2087.557092	+ 1954.056060

\* \* \* \* \* M E N S E K I K E I S A N \* \* \* \* \*

TENMEI	X	Y	(X-X0)*(YN-1-Y0)	(XN-1-X0)*(Y-Y0)
OS97-28	- 150137.107	- 38993.147	+ 3451.173642	+ 1836.579399
OS97-26	- 150137.017	- 39005.988	+ 3448.022499	+ 3932.896716
OS97-25	- 150135.063	- 39005.974	+ 3716.257244	+ 3922.839558
OS97-14	- 150121.010	- 39005.876	+ 2226.513740	+ 3712.330188
			+ 14929.524217	+ 15358.701921
		BAI MENSEKI =	429.177704	
		MENSEKI =	214.588852	

~~13 LOT~~

TENMEI	X	Y	(X-X0)*(YN-1-Y0)	(XN-1-X0)*(Y-Y0)
X0.Y0	- 150100.000	- 38900.000		
OS97-15	- 150119.717	- 38993.006		
OS97-16	- 150119.184	- 38987.702	+ 1784.227104	+ 1729.220334
OS97-29	- 150147.887	- 38987.818	+ 4199.785674	+ 1684.700512
OS97-27	- 150147.759	- 39006.063	+ 4194.099862	+ 5079.038881
OS97-26	- 150137.017	- 39005.988	+ 3926.134071	+ 5061.880892
OS97-28	- 150137.107	- 38993.147	+ 3932.896716	+ 3448.022499
OS97-15	- 150119.717	- 38993.006	+ 1836.579399	+ 3451.173642
			+ 19873.722826	+ 20454.036760
		BAI MENSEKI =	580.313934	
		MENSEKI =	290.156967	

1 入三并

TENMEI	X	Y	(X-X0)*(YN-1-Y0)	(XN-1-X0)*(Y-Y0)
X0.Y0	- 150100.000	- 38900.000		
OS97-1	- 150117.834	- 38974.260		
OS97-5	- 150118.034	- 38976.250	+ 1339.204840	+ 1359.842500
OS97-6	- 150119.834	- 38974.269	+ 1512.342500	+ 1339.367146
OS97-1	- 150117.834	- 38974.260	+ 1324.513346	+ 1472.872840
			+ 4176.060686	+ 4172.082486
		BAI MENSEKI =	3.978200	
		MENSEKI =	1.989100	

2 入三并

TENMEI	X	Y	(X-X0)*(YN-1-Y0)	(XN-1-X0)*(Y-Y0)
X0.Y0	- 150200.000	- 38900.000		
OS97-2	- 150215.079	- 38974.697		
OS97-7	- 150213.079	- 38974.688	+ 976.962063	+ 1126.220352
OS97-8	- 150215.216	- 38976.692	+ 1136.452608	+ 1003.054668
OS97-2	- 150215.079	- 38974.697	+ 1156.438668	+ 1136.589552
			+ 3269.853339	+ 3265.864572
		BAI MENSEKI =	3.988767	
		MENSEKI =	1.994383	



\* \* \* \* \* M E N S E K I K E I S A N \* \* \* \* \*

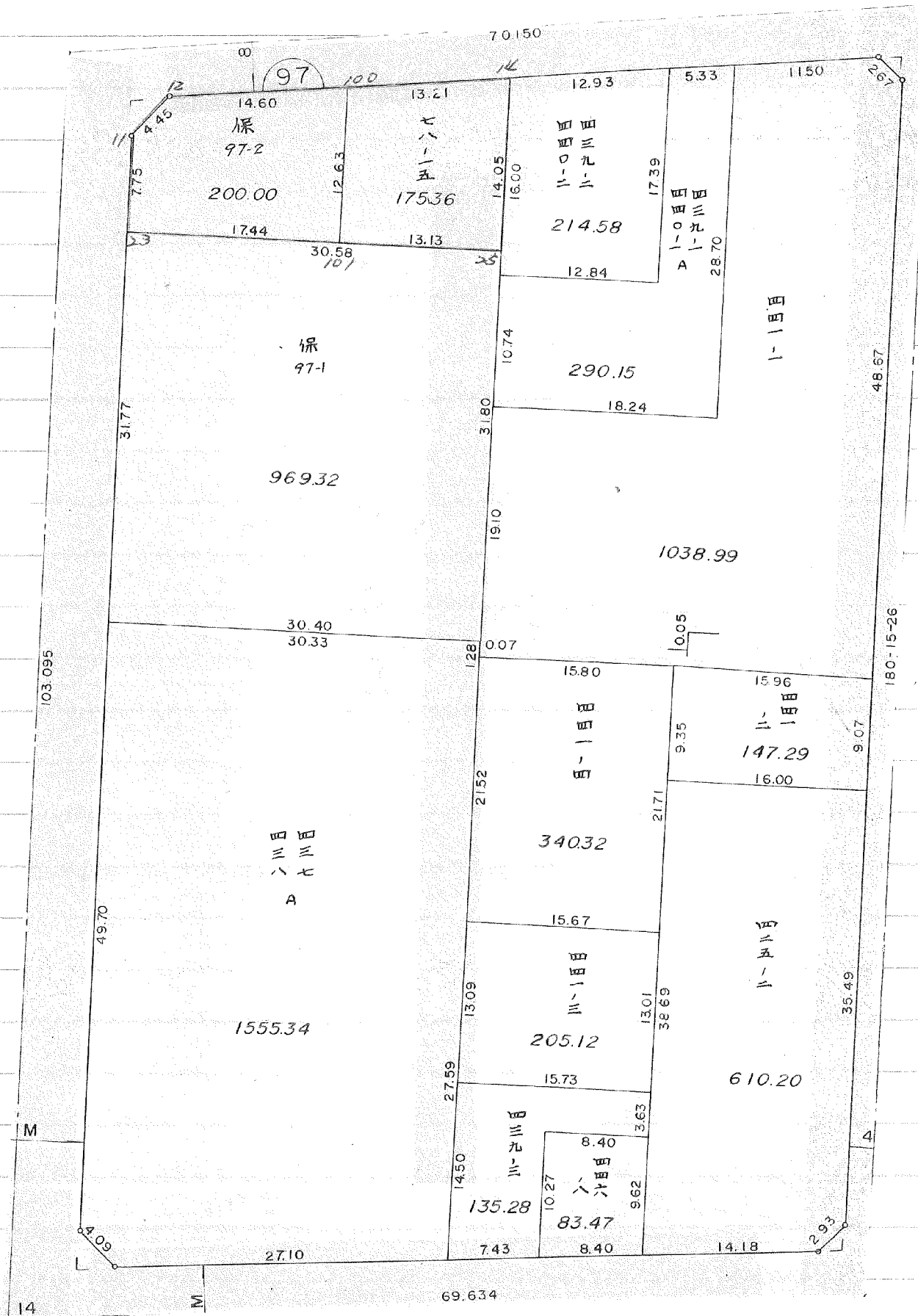
5 月 判

TENMEI	X	Y	(X-X0)*(YN-1-Y0)	(XN-1-X0)*(Y-Y0)
X0.Y0	- 150200.000	- 39000.000		
OS97-3	- 150219.330	- 39036.679		
OS97-9	- 150219.125	- 39033.686	+ 701.485875	+ 651.150380
OS97-10	- 150216.330	- 39036.675	+ 550.092380	+ 701.409375
OS97-3	- 150219.330	- 39036.679	+ 708.927750	+ 598.968070
			+ 1960.506005	+ 1951.527825
		BAI MENSEKI =	8.978180	
		MENSEKI =	4.489090	

4 月 判

TENMEI	X	Y	(X-X0)*(YN-1-Y0)	(XN-1-X0)*(Y-Y0)
X0.Y0	- 150100.000	- 39000.000		
OS97-4	- 150124.090	- 39036.545		
OS97-11	- 150127.090	- 39036.549	+ 990.004050	+ 880.465410
OS97-12	- 150123.790	- 39033.560	+ 869.500710	+ 909.140400
OS97-4	- 150124.090	- 39036.545	+ 808.460400	+ 869.405550
			+ 2667.965160	+ 2659.011360
		BAI MENSEKI =	8.953800	
		MENSEKI =	4.476900	

確定以後変更



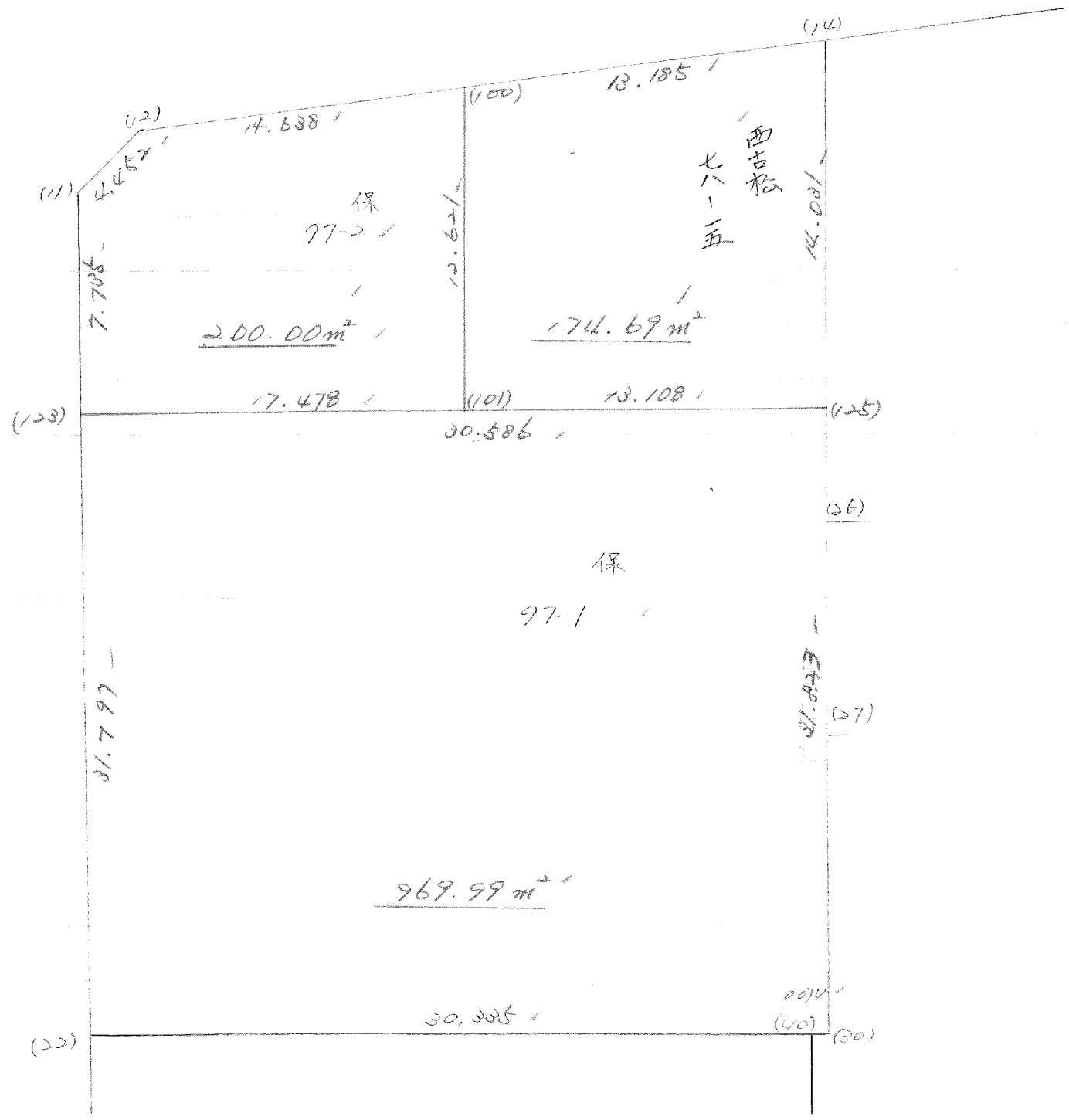
10 LOT

元NO. X <sub>0</sub> Y <sub>0</sub>	X	Y	(X-X <sub>0</sub> )(Y <sub>N-1</sub> -Y <sub>0</sub> )	(X <sub>N-1</sub> -X <sub>0</sub> )(Y-Y <sub>0</sub> )
100	-150100.000	-39000.000		
100	-150122.331	-39019.025		
101	-150134.970	-39019.113	665.304250	426.812403
23	-150134.847	-39036.560	666.030711	1278.503200
11	-150127.090	-39036.549	990.410400	1273.623003
12	-150123.770	-39033.560	869.500710	909.140400
100	-150122.331	-39019.025	749.428360	452.604750
			3940.674431	4340.683756
			1/2 元ノセキ=	400.009325
			元ノセキ=	200.004662

11 LOT

元NO. X <sub>0</sub> Y <sub>0</sub>	X	Y	(X-X <sub>0</sub> )(Y <sub>N-1</sub> -Y <sub>0</sub> )	(X <sub>N-1</sub> -X <sub>0</sub> )(Y-Y <sub>0</sub> )
100	-150100.000	-39000.000		
100	-150122.331	-39019.025		
14	-150121.010	-39005.876	399.715250	131.216956
25	-150135.063	-39005.974	206.030188	125.513740
101	-150134.970	-39019.113	208.910780	670.159119
100	-150122.331	-39019.025	426.812403	665.304250
			1241.468621	1592.194065
			1/2 元ノセキ=	350.725444
			元ノセキ=	175.362722

97 BLOCK



(ホ)97-1 LOT

元/NO. X <sub>0</sub> Y <sub>0</sub>	X	Y	(X-X <sub>0</sub> )(Y <sub>N-1</sub> -Y <sub>0</sub> )	(X <sub>N-1</sub> -X <sub>0</sub> )(Y-Y <sub>0</sub> )
123	-150100.000	-39000.000		
125	-150134.825	-39036.560		
26	-150135.041	-39005.975	1281.098960	208.079375
27	-150137.017	-39005.988	221.176575	209.825508
30	-150147.759	-39006.063	285.980892	224.434071
40	-150166.855	-39006.197	405.341865	295.962523
22	-150166.854	-39006.271	414.294238	419.247705
123	-150166.622	-39036.605	417.786562	2447.190670
123	-150134.825	-39036.560	1274.769125	2435.700320
			4300.448217	6240.440172
			シ ン セ キ =	1939.991955
			ノ セ キ =	969.995977

(ホ)97-2 LOT

テ/NO. X <sub>o</sub> Y <sub>o</sub>	X	Y	(X-X <sub>o</sub> )(YN-1-Y <sub>o</sub> )	(XN-1-X <sub>o</sub> )(Y-Y <sub>o</sub> )
	-150100.000	-39000.000		
11	-150127.090	-39036.549		
12	-150123.790	-39033.560	869.500710	909.140400
100	-150122.327	-39018.995	749.294120	451.891050
101	-150134.948	-39019.083	663.837260	426.066141
123	-150134.825	-39036.560	664.565475	1277.698880
11	-150127.090	-39036.549	990.410400	1272.818925
			3937.607965	4337.615396
			ハ イ マ イ セ キ =	400.007431
			マ イ セ キ =	200.003715

11 LOT

テ/NO. X <sub>o</sub> Y <sub>o</sub>	X	Y	(X-X <sub>o</sub> )(YN-1-Y <sub>o</sub> )	(XN-1-X <sub>o</sub> )(Y-Y <sub>o</sub> )
	-150100.000	-39000.000		
100	-150122.327	-39018.995		
14	-150121.010	-39005.876	399.084950	131.193452
125	-150135.041	-39005.975	205.900916	125.534750
101	-150134.948	-39019.083	208.814300	668.687403
100	-150122.327	-39018.995	426.066141	663.837260
			1239.866307	1589.252865
			ハ イ マ イ セ キ =	349.386558
			マ イ セ キ =	174.693279



13-1 LOT

元NO. X <sub>0</sub> Y <sub>0</sub>	X	Y	(X-X <sub>0</sub> )(Y <sub>N-1</sub> -Y <sub>0</sub> )	(X <sub>N-1</sub> -X <sub>0</sub> )(Y-Y <sub>0</sub> )
16	-150119.184	-38987.702		
29	-150147.887	-38987.818	4199.785674	1684.700512
27	-150147.759	-39006.063	4194.099862	5079.038881
26	-150137.017	-39005.988	3926.134071	5061.880892
106	-150137.114	-38992.115	3933.638632	3409.820955
105	-150119.613	-38991.973	1806.651495	3413.485922
16	-150119.184	-38987.702	1764.410032	1720.099326
			19824.719766	20369.026488
			ハイメニセキ=	544.306722
			メニセキ=	272.153361

13-2 LOT

元NO. X <sub>0</sub> Y <sub>0</sub>	X	Y	(X-X <sub>0</sub> )(Y <sub>N-1</sub> -Y <sub>0</sub> )	(X <sub>N-1</sub> -X <sub>0</sub> )(Y-Y <sub>0</sub> )
15	-150119.717	-38993.006		
105	-150119.613	-38991.973	1824.126678	1813.431641
106	-150137.114	-38992.115	3413.485922	1806.651495
28	-150137.107	-38993.147	3418.111305	3457.057758
15	-150119.717	-38993.006	1836.579399	3451.173642
			10492.303304	10528.314536
			ハイメニセキ=	36.011232
			メニセキ=	18.005616

\*\*\*\*\*

ガイク メニセキ= 0.000000  
 カクヒツソウメニセキ= 290.158977  
 スミキリソウメニセキ= 0.000000

\*\*\*\*\*



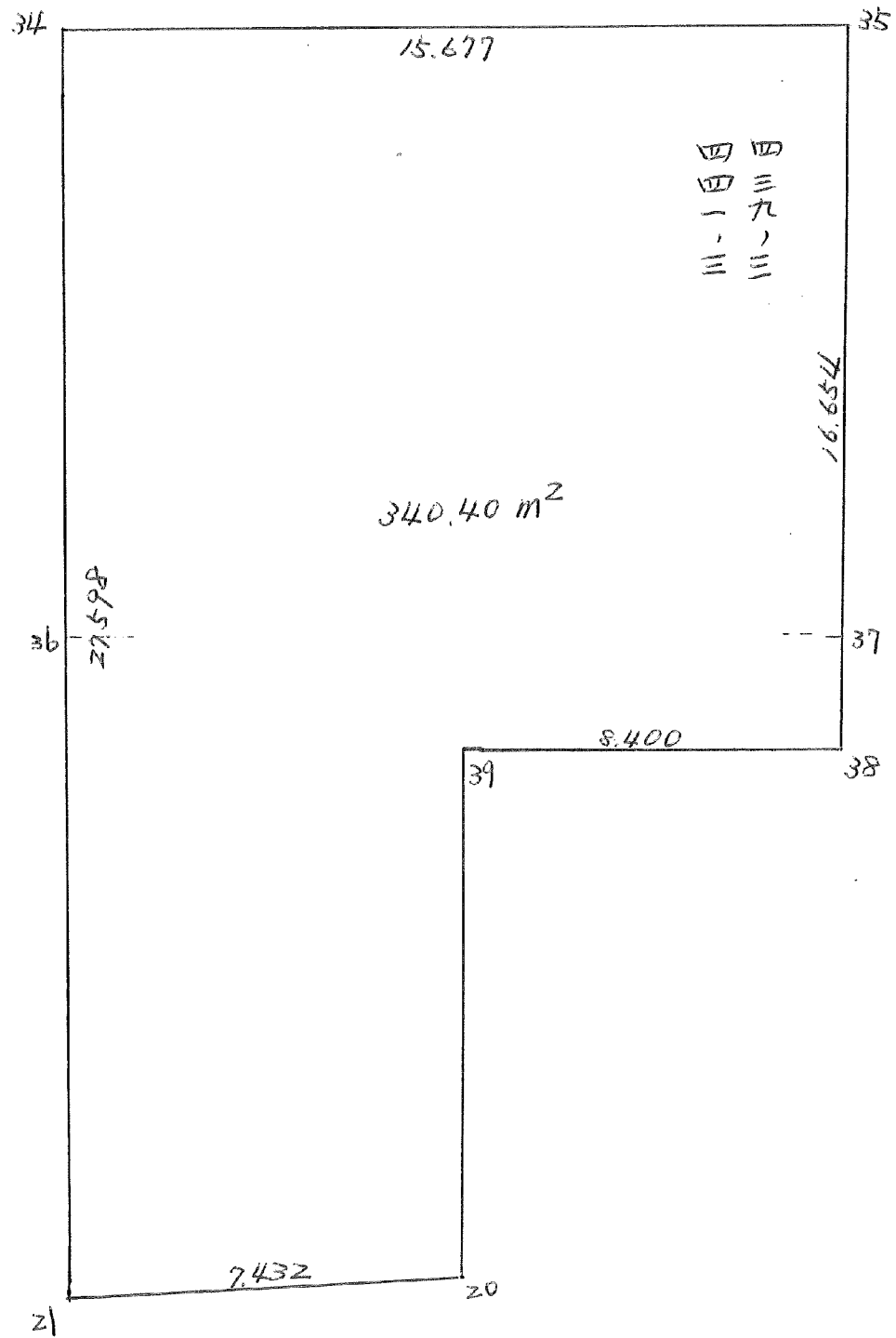


97 BLOCK

元NO. X <sub>0</sub> , Y <sub>0</sub> =	X	Y	(X-X <sub>0</sub> ) (Y <sub>N-1</sub> -Y <sub>0</sub> )	(X <sub>N-1</sub> -X <sub>0</sub> ) (Y-Y <sub>0</sub> )
	-150100.000	-38900.000		
22	-150166.622	-39036.605		
40	-150166.854	-39006.271	9132.590670	7079.986562
31	-150168.143	-39006.256	7241.624753	7103.638624
41	-150168.188	-38990.451	7245.384128	6163.602493
33	-150177.490	-38990.527	7009.047990	6172.855076
35	-150189.905	-38990.628	8138.829935	7022.763720
34	-150189.668	-39006.303	8126.431504	9557.171215
51	-150189.136	-39006.302	9475.424208	9531.887736
50	-150189.092	-39036.637	9470.657784	12179.275632
22	-150166.622	-39036.605	9103.030214	12170.412660
			74943.021186	76981.593718
			ハイムンセキ=	2038.572532
			ムンセキ=	1019.286266

分筆後の座標なし

BNO, 97



97 BLOCK

元NO. X <sub>0</sub> , Y <sub>0</sub> =	X	Y	(X-X <sub>0</sub> ) (YN-1-Y <sub>0</sub> )	(XN-1-X <sub>0</sub> ) (Y-Y <sub>0</sub> )
	-150100.000	-38900.000		
34	-150189.668	-39006.303		
35	-150189.905	-38990.628	9557.171215	8126.431504
37	-150202.924	-38990.735	9327.796272	8157.530175
38	-150206.561	-38990.765	9668.812335	9341.896860
39	-150206.491	-38999.165	9665.655615	10567.121565
20	-150216.762	-38999.230	11578.703730	10567.101930
21	-150217.271	-39006.644	11636.801330	12451.966728
36	-150202.772	-39006.465	10960.017168	12485.257015
34	-150189.668	-39006.303	9546.503620	10924.971916
			81941.461285	82622.277693
			メソセキ=	680.816408
			メソセキ=	340.408204