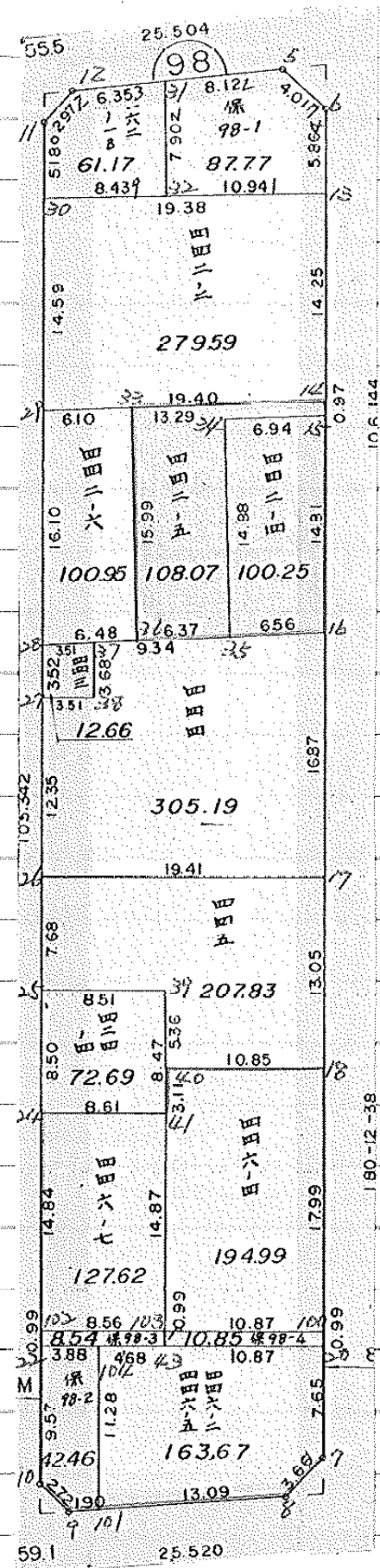


面地確定計算書

BLOCK No. 98



       確定以後変更  
       換地計画準備の時変更

\* \* \* \* \* KAKUHITSU MENSEKI KESAN-SHO \* \* \* \* \*

BLOCK . LOT	KAKUHITSU MENSEKI	SUMIKIRI . SUIRO MENSEKI
98 BLOCK	1884.275343	
1 LOT	87.774698	
2 LOT	279.591956	
3 LOT	108.077067	108.167528
4 LOT	100.257547	100.168022
5 LOT	305.195428	
6 LOT	207.831631	
7 LOT	194.985098	91.995858
8 LOT	10.868302	10.857423
9 LOT	163.078149	163.671589
10 LOT	43.061221	42.461976
11 LOT	8.565025	8.548952
12 LOT	127.610312	127.627092
13 LOT	72.698844	
14 LOT	12.661033	
15 LOT	100.952851	
16 LOT	61.171400	
1 入三升		4.475850
2 入三升		3.116730
3 入三升		1.994383
4 入三升		1.989100
TOTAL =	1884.380562	11.576063

\* \* \* \* \* M E N S E K I K E I S A N \* \* \* \* \*

98 BLOCK

TENMEI	X	Y	(X-X0)*(YN-1-Y0)	(XN-1-X0)*(Y-Y0)
X0.Y0	- 150100.000	- 38900.000		
OS98-5	- 150115.786	- 38953.866		
OS98-6	- 150118.486	- 38950.892	+ 995.766876	+ 803.381112
OS98-7	- 150210.970	- 38951.232	+ 5647.485240	+ 947.074752
OS98-8	- 150213.641	- 38953.735	+ 5822.055712	+ 5962.972950
OS98-9	- 150214.667	- 38968.701	+ 6161.631245	+ 7807.250341
OS98-10	- 150212.804	- 38970.687	+ 7749.747604	+ 8105.466229
OS98-11	- 150119.432	- 38970.267	+ 1373.589784	+ 7926.398668
OS98-12	- 150117.232	- 38968.268	+ 1210.840944	+ 1326.583776
OS98-5	- 150115.786	- 38953.866	+ 1077.678648	+ 928.218912
			+ 30038.796053	+ 33807.346740
		BAI MENSEKI =	3768.550687	
		MENSEKI =	1884.275343	

1 LOT

TENMEI	X	Y	(X-X0)*(YN-1-Y0)	(XN-1-X0)*(Y-Y0)
X0.Y0	- 150100.000	- 38900.000		
OS98-5	- 150115.786	- 38953.866		
OS98-6	- 150118.486	- 38950.892	+ 995.766876	+ 803.381112
OS98-13	- 150124.350	- 38950.914	+ 1239.220200	+ 941.196204
OS98-32	- 150124.498	- 38961.854	+ 1247.291172	+ 1506.144900
OS98-31	- 150116.597	- 38961.947	+ 1026.590838	+ 1517.577606
OS98-5	- 150115.786	- 38953.866	+ 977.895342	+ 894.014002
			+ 5486.764428	+ 5662.313824
		BAI MENSEKI =	175.549396	
		MENSEKI =	87.774698	

2 LOT

TENMEI	X	Y	(X-X0)*(YN-1-Y0)	(XN-1-X0)*(Y-Y0)
X0.Y0	- 150100.000	- 38900.000		
OS98-13	- 150124.350	- 38950.914		
OS98-14	- 150138.607	- 38950.966	+ 1965.636798	+ 1241.022100
OS98-33	- 150139.016	- 38964.254	+ 1988.489456	+ 2480.654178
OS98-29	- 150139.204	- 38970.358	+ 2519.013816	+ 2745.087728
OS98-30	- 150124.612	- 38970.292	+ 1731.651096	+ 2755.727568
OS98-32	- 150124.498	- 38961.854	+ 1722.013416	+ 1522.350648
OS98-13	- 150124.350	- 38950.914	+ 1506.144900	+ 1247.291172
			+ 11432.949482	+ 11992.133394
		BAI MENSEKI =	559.183912	
		MENSEKI =	279.591956	

\* \* \* \* \* M E N S E K I K E I S A N \* \* \* \* \*

3 LOT

TENMEI	X	Y	(X-X0)*(YN-1-Y0)	(XN-1-X0)*(Y-Y0)
X0.Y0	- 150100.000	- 38900.000		
OS98-14	- 150138.607	- 38950.966		
OS98-15	- 150139.581	- 38950.970	+ 2017.285246	+ 1967.798790
OS98-34	- 150139.817	- 38957.909	+ 2029.472490	+ 2292.096129
OS98-35	- 150154.702	- 38957.585	+ 3167.738118	+ 2292.861945
OS98-36	- 150155.005	- 38963.957	+ 3167.462925	+ 3498.575814
OS98-33	- 150139.016	- 38964.254	+ 2495.346312	+ 3534.291270
OS98-14	- 150138.607	- 38950.966	+ 2480.654178	+ 1988.489456
			+ 15357.959269	+ 15574.113404
		BAI MENSEKI =	216.154135	
		MENSEKI =	108.077067	

4 LOT

TENMEI	X	Y	(X-X0)*(YN-1-Y0)	(XN-1-X0)*(Y-Y0)
X0.Y0	- 150100.000	- 38900.000		
OS98-15	- 150139.581	- 38950.970		
OS98-16	- 150154.391	- 38951.024	+ 2772.309270	+ 2019.580944
OS98-35	- 150154.702	- 38957.585	+ 2791.114848	+ 3132.105735
OS98-34	- 150139.817	- 38957.909	+ 2292.861945	+ 3167.738118
OS98-15	- 150139.581	- 38950.970	+ 2292.096129	+ 2029.472490
			+ 10148.382192	+ 10348.897287
		BAI MENSEKI =	200.515095	
		MENSEKI =	100.257547	

5 LOT

TENMEI	X	Y	(X-X0)*(YN-1-Y0)	(XN-1-X0)*(Y-Y0)
X0.Y0	- 150100.000	- 38900.000		
OS98-16	- 150154.391	- 38951.024		
OS98-17	- 150171.264	- 38951.086	+ 3636.174336	+ 2778.618626
OS98-26	- 150171.193	- 38970.501	+ 3636.965598	+ 5024.183264
OS98-27	- 150158.838	- 38970.446	+ 4148.137838	+ 5015.262078
OS98-38	- 150158.830	- 38966.935	+ 4144.338180	+ 3938.321530
OS98-37	- 150155.146	- 38966.915	+ 3691.197510	+ 3936.609450
OS98-36	- 150155.005	- 38963.957	+ 3680.659575	+ 3526.972722
OS98-35	- 150154.702	- 38957.585	+ 3498.575814	+ 3167.462925
OS98-16	- 150154.391	- 38951.024	+ 3132.105735	+ 2791.114848
			+ 29568.154586	+ 30178.545443
		BAI MENSEKI =	610.390857	
		MENSEKI =	305.195428	

\* \* \* \* \* M E N S E K I K E I S A N \* \* \* \* \*

6 LOT

TENMEI	X	Y	(X-X0)*(YN-1-Y0)	(XN-1-X0)*(Y-Y0)
X0.Y0	- 150100.000	- 38900.000		
OS98-17	- 150171.264	- 38951.086		
OS98-18	- 150184.318	- 38951.134	+ 4307.469348	+ 3644.013376
OS98-40	- 150184.296	- 38961.984	+ 4310.391664	+ 5226.366912
OS98-39	- 150178.932	- 38962.025	+ 4892.521088	+ 5228.459400
OS98-25	- 150178.876	- 38970.535	+ 4892.283900	+ 5567.468620
OS98-26	- 150171.193	- 38970.501	+ 5021.598255	+ 5560.836876
OS98-17	- 150171.264	- 38951.086	+ 5024.183264	+ 3636.965598
			+ 28448.447519	+ 28864.110782
		BAI MENSEKI =	415.663263	
		MENSEKI =	207.831631	

~~7 LOT~~

TENMEI	X	Y	(X-X0)*(YN-1-Y0)	(XN-1-X0)*(Y-Y0)
X0.Y0	- 150100.000	- 38900.000		
OS98-18	- 150184.318	- 38951.134		
OS98-19	- 150202.314	- 38951.200	+ 5231.724076	+ 4317.081600
OS98-42	- 150202.270	- 38962.072	+ 5236.224000	+ 6350.834608
OS98-41	- 150187.406	- 38961.960	+ 5425.465232	+ 6336.649200
OS98-40	- 150184.296	- 38961.984	+ 5222.980160	+ 5417.773504
OS98-18	- 150184.318	- 38951.134	+ 5226.366912	+ 4310.391664
			+ 26342.760380	+ 26732.730576
		BAI MENSEKI =	389.970196	
		MENSEKI =	194.985098	

8 LOT

TENMEI	X	Y	(X-X0)*(YN-1-Y0)	(XN-1-X0)*(Y-Y0)
X0.Y0	- 150200.000	- 38900.000		
OS98-19	- 150202.314	- 38951.200		
OS98-20	- 150203.313	- 38951.204	+ 169.625600	+ 118.486056
OS98-43	- 150203.270	- 38962.079	+ 167.437080	+ 205.667727
OS98-42	- 150202.270	- 38962.072	+ 140.919330	+ 202.975440
OS98-19	- 150202.314	- 38951.200	+ 143.634608	+ 116.224000
			+ 621.616618	+ 643.353223
		BAI MENSEKI =	21.736605	
		MENSEKI =	10.868302	

9 LOT

TENMEI	X	Y	(X-X0)*(YN-1-Y0)	(XN-1-X0)*(Y-Y0)
X0.Y0	- 150200.000	- 38900.000		
OS98-20	- 150203.313	- 38951.204		
OS98-7	- 150210.970	- 38951.232	+ 561.707880	+ 169.731616

\* \* \* \* \* M E N S E K I K E I S A N \* \* \* \* \*

TENMEI	X	Y	(X-X0)*(YN-1-Y0)	(XN-1-X0)*(Y-Y0)
OS98-8	- 150213.641	- 38953.735	+ 698.855712	+ 589.472950
OS98-21	- 150214.534	- 38966.750	+ 780.984490	+ 910.536750
OS98-44	- 150203.248	- 38966.705	+ 216.804000	+ 969.490470
OS98-43	- 150203.270	- 38962.079	+ 218.125350	+ 201.632592
OS98-20	- 150203.313	- 38951.204	+ 205.667727	+ 167.437080
			+ 2682.145159	+ 3008.301458
		BAI MENSEKI =	326.156299	
		MENSEKI =	163.078149	

10 LOT

TENMEI	X	Y	(X-X0)*(YN-1-Y0)	(XN-1-X0)*(Y-Y0)
X0.Y0	- 150200.000	- 38900.000		
OS98-21	- 150214.534	- 38966.750		
OS98-9	- 150214.667	- 38968.701	+ 979.022250	+ 998.500334
OS98-10	- 150212.804	- 38970.687	+ 879.647604	+ 1036.766229
OS98-22	- 150203.230	- 38970.644	+ 228.319010	+ 904.525776
OS98-44	- 150203.248	- 38966.705	+ 229.451712	+ 215.457150
OS98-21	- 150214.534	- 38966.750	+ 969.490470	+ 216.804000
			+ 3285.931046	+ 3372.053489
		BAI MENSEKI =	86.122443	
		MENSEKI =	43.061221	

11 LOT

TENMEI	X	Y	(X-X0)*(YN-1-Y0)	(XN-1-X0)*(Y-Y0)
X0.Y0	- 150200.000	- 38900.000		
OS98-22	- 150203.230	- 38970.644		
OS98-23	- 150202.230	- 38970.640	+ 157.536120	+ 228.167200
OS98-42	- 150202.270	- 38962.072	+ 160.352800	+ 138.420560
OS98-43	- 150203.270	- 38962.079	+ 202.975440	+ 140.919330
OS98-44	- 150203.248	- 38966.705	+ 201.632592	+ 218.125350
OS98-22	- 150203.230	- 38970.644	+ 215.457150	+ 229.451712
			+ 937.954102	+ 955.084152
		BAI MENSEKI =	17.130050	
		MENSEKI =	8.565025	

12 LOT

TENMEI	X	Y	(X-X0)*(YN-1-Y0)	(XN-1-X0)*(Y-Y0)
X0.Y0	- 150100.000	- 38900.000		
OS98-23	- 150202.230	- 38970.640		
OS98-24	- 150187.385	- 38970.573	+ 6172.876400	+ 7214.677790
OS98-41	- 150187.406	- 38961.960	+ 6168.503638	+ 5414.374600
OS98-42	- 150202.270	- 38962.072	+ 6336.649200	+ 5425.465232

\* \* \* \* \* M E N S E K I K E I S A N \* \* \* \* \*

TENMEI	X	Y	(X-X0)*(YN-1-Y0)	(XN-1-X0)*(Y-Y0)
OS98-23	- 150202.230	- 38970.640	+ 6345.620560	+ 7224.352800
			+ 25023.649798	+ 25278.870422
		BAI MENSEKI =	255.220624	
		MENSEKI =	127.610312	

13 LOT

TENMEI	X	Y	(X-X0)*(YN-1-Y0)	(XN-1-X0)*(Y-Y0)
X0.Y0	- 150100.000	- 38900.000		
OS98-24	- 150187.385	- 38970.573		
OS98-25	- 150178.876	- 38970.535	+ 5566.515948	+ 6163.700975
OS98-39	- 150178.932	- 38962.025	+ 5567.468620	+ 4892.283900
OS98-40	- 150184.296	- 38961.984	+ 5228.459400	+ 4892.521088
OS98-41	- 150187.406	- 38961.960	+ 5417.773504	+ 5222.980160
OS98-24	- 150187.385	- 38970.573	+ 5414.374600	+ 6168.503638
			+ 27194.592072	+ 27339.989761
		BAI MENSEKI =	145.397689	
		MENSEKI =	72.698844	

14 LOT

TENMEI	X	Y	(X-X0)*(YN-1-Y0)	(XN-1-X0)*(Y-Y0)
X0.Y0	- 150100.000	- 38900.000		
OS98-27	- 150158.838	- 38970.446		
OS98-28	- 150155.313	- 38970.430	+ 3896.579598	+ 4143.960340
OS98-37	- 150155.146	- 38966.915	+ 3883.932780	+ 3701.269395
OS98-38	- 150158.830	- 38966.935	+ 3936.609450	+ 3691.197510
OS98-27	- 150158.838	- 38970.446	+ 3938.321530	+ 4144.338180
			+ 15655.443358	+ 15680.765425
		BAI MENSEKI =	25.322067	
		MENSEKI =	12.661033	

15 LOT

TENMEI	X	Y	(X-X0)*(YN-1-Y0)	(XN-1-X0)*(Y-Y0)
X0.Y0	- 150100.000	- 38900.000		
OS98-28	- 150155.313	- 38970.430		
OS98-29	- 150139.204	- 38970.358	+ 2761.137720	+ 3891.712054
OS98-33	- 150139.016	- 38964.254	+ 2745.087728	+ 2519.013816
OS98-36	- 150155.005	- 38963.957	+ 3534.291270	+ 2495.346312
OS98-37	- 150155.146	- 38966.915	+ 3526.972722	+ 3680.659575
OS98-28	- 150155.313	- 38970.430	+ 3701.269395	+ 3883.932780
			+ 16268.758835	+ 16470.664537
		BAI MENSEKI =	201.905702	
		MENSEKI =	100.952851	



\* \* \* \* \* M E N S E K I K E I S A N \* \* \* \* \*

16 LOT

TENMEI	X	Y	(X-X0)*(YN-1-Y0)	(XN-1-X0)*(Y-Y0)
X0.Y0	- 150100.000	- 38900.000		
OS98-30	- 150124.612	- 38970.292		
OS98-11	- 150119.432	- 38970.267	+ 1365.914144	+ 1729.411404
OS98-12	- 150117.232	- 38968.268	+ 1210.840944	+ 1326.583776
OS98-31	- 150116.597	- 38961.947	+ 1133.043996	+ 1067.470704
OS98-32	- 150124.498	- 38961.854	+ 1517.577606	+ 1026.590838
OS98-30	- 150124.612	- 38970.292	+ 1522.350648	+ 1722.013416
			+ 6749.727338	+ 6872.070138
		BAI MENSEKI =	122.342800	
		MENSEKI =	61.171400	

1 入三ナリ

TENMEI	X	Y	(X-X0)*(YN-1-Y0)	(XN-1-X0)*(Y-Y0)
X0.Y0	- 150100.000	- 38900.000		
OS98-1	- 150115.486	- 38950.881		
OS98-5	- 150115.786	- 38953.866	+ 803.207466	+ 834.168876
OS98-6	- 150118.486	- 38950.892	+ 995.766876	+ 803.381112
OS98-1	- 150115.486	- 38950.881	+ 788.113512	+ 940.586166
			+ 2587.087854	+ 2578.136154
		BAI MENSEKI =	8.951700	
		MENSEKI =	4.475850	

2 入三ナリ

TENMEI	X	Y	(X-X0)*(YN-1-Y0)	(XN-1-X0)*(Y-Y0)
X0.Y0	- 150200.000	- 38900.000		
OS98-2	- 150213.470	- 38951.241		
OS98-7	- 150210.970	- 38951.232	+ 562.113770	+ 690.095040
OS98-8	- 150213.641	- 38953.735	+ 698.855712	+ 589.472950
OS98-2	- 150213.470	- 38951.241	+ 723.810450	+ 698.978481
			+ 1984.779932	+ 1978.546471
		BAI MENSEKI =	6.233461	
		MENSEKI =	3.116730	

3 入三ナリ

TENMEI	X	Y	(X-X0)*(YN-1-Y0)	(XN-1-X0)*(Y-Y0)
X0.Y0	- 150200.000	- 38900.000		
OS98-3	- 150214.804	- 38970.696		
OS98-9	- 150214.667	- 38968.701	+ 1036.898232	+ 1017.049604
OS98-10	- 150212.804	- 38970.687	+ 879.647604	+ 1036.766229
OS98-3	- 150214.804	- 38970.696	+ 1046.450348	+ 905.191584

\* \* \* \* \* M E N S E K I K E I S A N \* \* \* \* \*

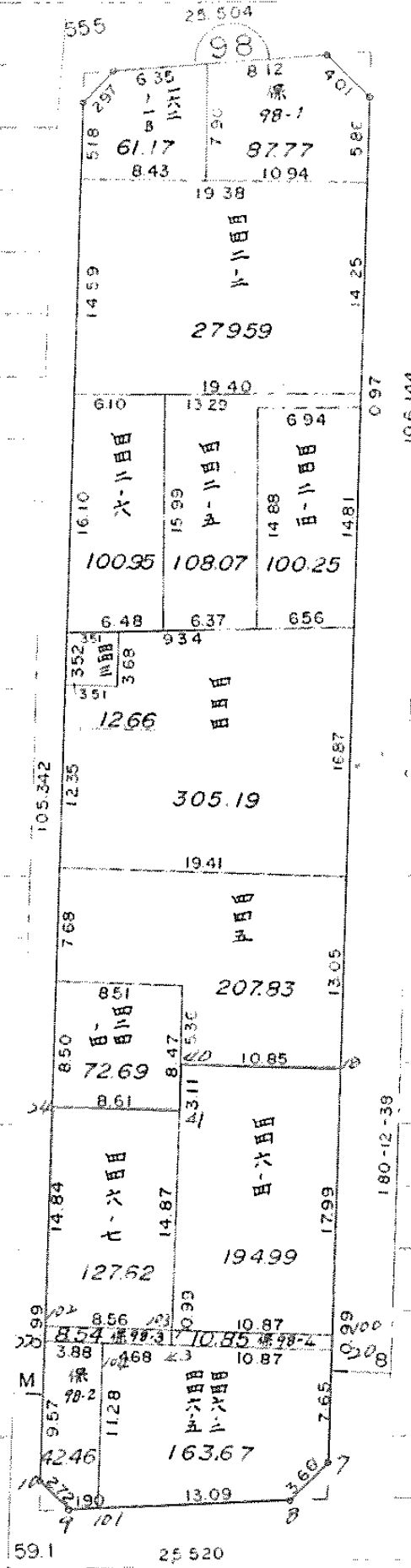
TENMEI	X	Y	(X-X0)*(YN-1-Y0)	(XN-1-X0)*(Y-Y0)
			+ 2952.996184	+ 2959.007417
		BAI MENSEKI =	3.988767	
		MENSEKI =	1.994383	

4 次刊

TENMEI	X	Y	(X-X0)*(YN-1-Y0)	(XN-1-X0)*(Y-Y0)
X0.Y0	- 150100.000	- 38900.000		
OS98-4	- 150117.432	- 38970.258		
OS98-11	- 150119.432	- 38970.267	+ 1365.253456	+ 1224.894344
OS98-12	- 150117.232	- 38968.268	+ 1210.840944	+ 1326.583776
OS98-4	- 150117.432	- 38970.258	+ 1190.047776	+ 1210.685856
			+ 3766.142176	+ 3762.163976
		BAI MENSEKI =	3.978200	
		MENSEKI =	1.989100	

98 BLOCK

確定以後変更



7 LOT

元NO. X <sub>o</sub> Y <sub>o</sub>	X	Y	(X-X <sub>o</sub> )(Y <sub>N-1</sub> -Y <sub>o</sub> )	(X <sub>N-1</sub> -X <sub>o</sub> )(Y-Y <sub>o</sub> )
	-150100.000	-38900.000		
40	-150184.296	-38961.984		
18	-150184.318	-38951.134	5226.366912	4310.391664
100	-150202.314	-38951.200	5231.724076	4317.081600
103	-150202.272	-38962.072	5236.326400	6350.834608
41	-150187.406	-38961.960	5425.465232	6336.773120
40	-150184.296	-38961.984	5222.980160	5417.773504
			26342.862780	26732.854496
			平均値=	389.991716
			分散=	194.995858

8 LOT

元NO. X <sub>o</sub> Y <sub>o</sub>	X	Y	(X-X <sub>o</sub> )(Y <sub>N-1</sub> -Y <sub>o</sub> )	(X <sub>N-1</sub> -X <sub>o</sub> )(Y-Y <sub>o</sub> )
	-150200.000	-38900.000		
100	-150202.314	-38951.200		
20	-150203.313	-38951.204	169.625600	118.486056
43	-150203.270	-38962.079	167.437080	205.667727
103	-150202.272	-38962.072	141.043488	202.975440
100	-150202.314	-38951.200	143.634608	116.326400
			621.740776	643.455623
			平均値=	21.714847
			分散=	10.857423

9 LOT

元NO. X <sub>o</sub> Y <sub>o</sub>	X	Y	(X-X <sub>o</sub> )(Y <sub>N-1</sub> -Y <sub>o</sub> )	(X <sub>N-1</sub> -X <sub>o</sub> )(Y-Y <sub>o</sub> )
	-150200.000	-38900.000		
20	-150203.313	-38951.204		
7	-150210.970	-38951.232	561.707880	169.731616
8	-150213.641	-38953.735	698.855712	539.472950
101	-150214.537	-38966.803	781.145695	911.259723
104	-150203.248	-38966.758	216.976144	970.461046
43	-150203.270	-38962.079	218.298660	201.632592
20	-150203.313	-38951.204	205.667727	167.437080
			2682.651818	3009.995007
			平均値=	327.343187
			分散=	163.671594

10 LOT

7DNO. X <sub>0</sub> Y <sub>0</sub>	X	Y	(X-X <sub>0</sub> )(Y <sub>N-1</sub> -Y <sub>0</sub> )	(X <sub>N-1</sub> -X <sub>0</sub> )(Y-Y <sub>0</sub> )
22	-150200.000	-38900.000		
104	-150203.230	-38970.644		
101	-150203.248	-38966.758	229.451712	215.628340
9	-150214.537	-38966.803	970.461046	216.976144
10	-150214.667	-38968.701	979.799601	998.706437
22	-150212.804	-38970.687	879.647604	1036.766229
	-150203.230	-38970.644	228.319010	904.525776
			3287.678973	3372.602926
			平均値=	84.923953
			分散=	42.461976

11 LOT

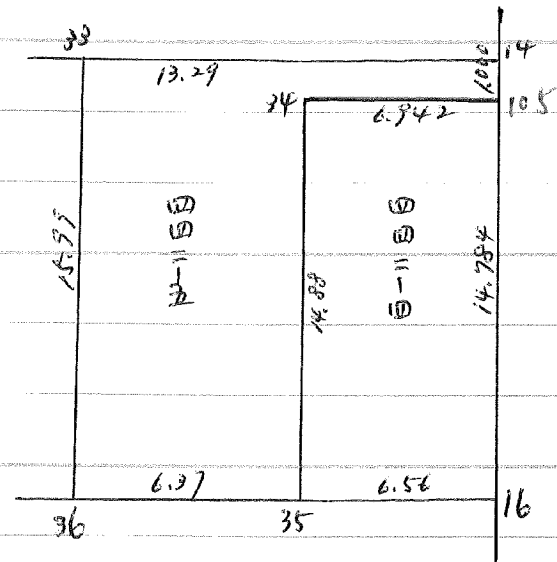
7DNO. X <sub>0</sub> Y <sub>0</sub>	X	Y	(X-X <sub>0</sub> )(Y <sub>N-1</sub> -Y <sub>0</sub> )	(X <sub>N-1</sub> -X <sub>0</sub> )(Y-Y <sub>0</sub> )
102	-150200.000	-38900.000		
103	-150202.232	-38970.640		
43	-150202.272	-38962.072	160.494080	138.544704
104	-150203.270	-38962.079	202.975440	141.043488
22	-150203.248	-38966.758	201.632592	218.298660
102	-150203.230	-38970.644	215.628340	229.451712
102	-150202.232	-38970.640	157.677408	228.167200
			938.407860	955.505764
			平均値=	17.097904
			分散=	8.548952

12 LOT

7DNO. X <sub>0</sub> Y <sub>0</sub>	X	Y	(X-X <sub>0</sub> )(Y <sub>N-1</sub> -Y <sub>0</sub> )	(X <sub>N-1</sub> -X <sub>0</sub> )(Y-Y <sub>0</sub> )
24	-150100.000	-38900.000		
41	-150187.385	-38970.573		
103	-150187.406	-38961.960	6168.503638	5414.374600
102	-150202.272	-38962.072	6336.773120	5425.465232
24	-150202.232	-38970.640	6345.744704	7224.494080
24	-150187.385	-38970.573	6172.876400	7214.818936
			25023.897862	25279.152848
			平均値=	255.254986
			分散=	127.627493

S.S. 12.15

BNO. 98



1 LOT

元NO. X <sub>0</sub> Y <sub>0</sub>	X	Y	(X-X <sub>0</sub> )(Y <sub>N-1</sub> -Y <sub>0</sub> )	(X <sub>N-1</sub> -X <sub>0</sub> )(Y-Y <sub>0</sub> )
	-150100.000	-38900.000		
14	-150138.607	-38950.966		
105	-150139.607	-38950.970	2018.610362	1967.798790
34	-150139.817	-38957.909	2029.472490	2293.601763
35	-150154.702	-38957.585	3167.738118	2292.861945
36	-150155.005	-38963.957	3167.462925	3498.575814
33	-150139.016	-38964.254	2495.346312	3534.291270
14	-150138.607	-38950.966	2480.654178	1988.489456
			15359.284385	15575.619038
			ハイノセキ=	216.334653
			ノセキ=	108.167326

2 LOT

元NO. X <sub>0</sub> Y <sub>0</sub>	X	Y	(X-X <sub>0</sub> )(Y <sub>N-1</sub> -Y <sub>0</sub> )	(X <sub>N-1</sub> -X <sub>0</sub> )(Y-Y <sub>0</sub> )
	-150100.000	-38900.000		
105	-150139.607	-38950.970		
16	-150154.391	-38951.024	2772.309270	2020.907568
35	-150154.702	-38957.585	2791.114848	3132.105735
34	-150139.817	-38957.909	2292.861945	3167.738118
105	-150139.607	-38950.970	2293.601763	2029.472490
			10149.887826	10350.223911
			ハイノセキ=	200.336085
			ノセキ=	100.168042