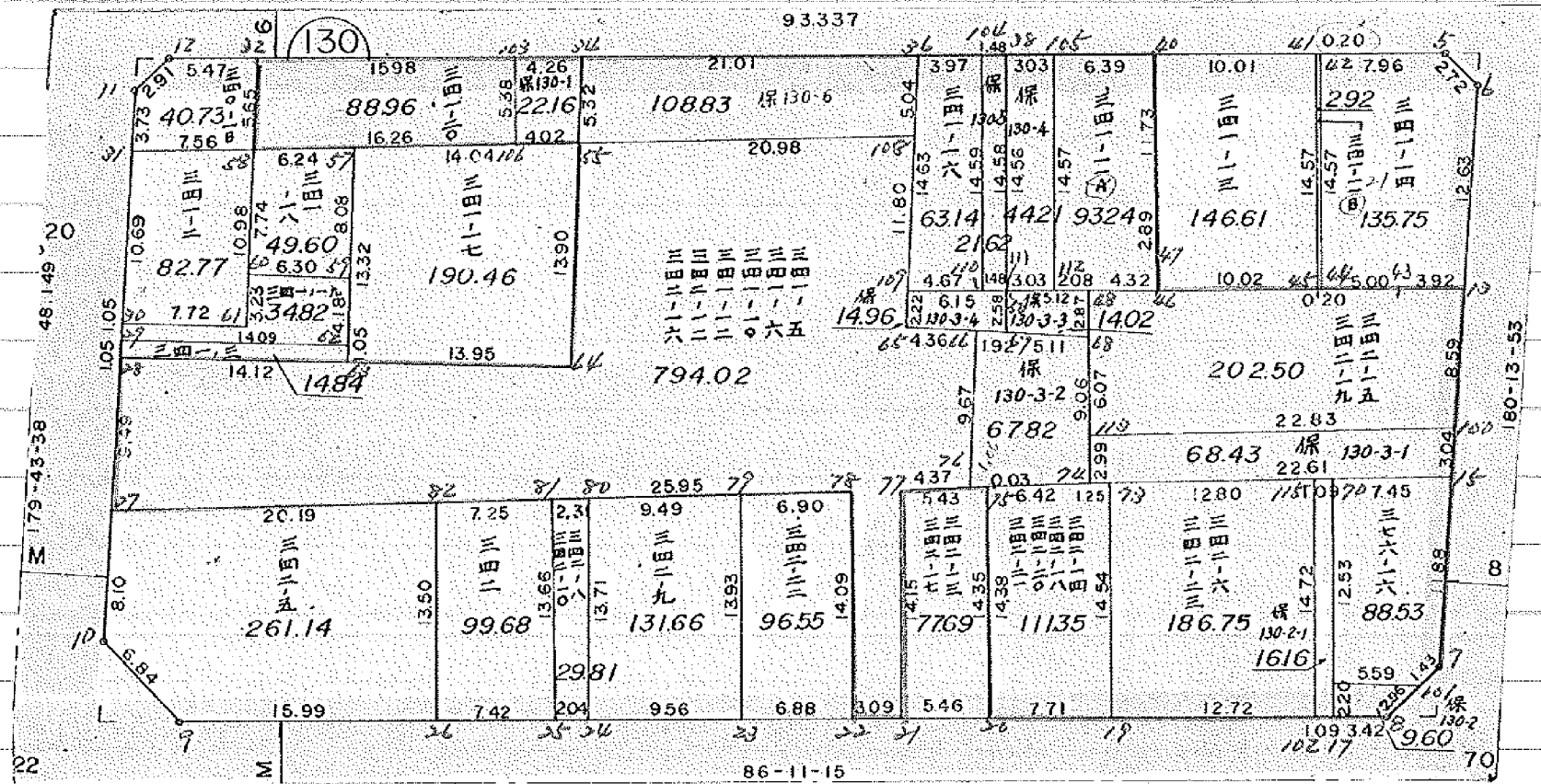


画地確定計算書

BLOCK NO. 130

確定以後変更



* * * * * KAKUHITSU MENSEKI KESAN-SHO * * * * *

BLOCK . LOT KAKUHITSU MENSEKI SUMIKIRI.SUIRO MENSEKI

130 BLOCK 3411.393238

1 LOT	135.757499	
2 LOT	203.256408	
3 LOT	67.676056	
4 LOT	89.183868	
5 LOT	8.961979	
6 LOT	16.222967	
7 LOT	186.692187	
8 LOT	111.248407	
9 LOT	77.690419	
10 LOT	794.630761	
11 LOT	96.551641	
12 LOT	131.662471	
13 LOT	29.818139	
14 LOT	99.686504	
15 LOT	261.148285	
16 LOT	14.847213	
17 LOT	34.821622	
18 LOT	82.771365	
19 LOT	40.737309	
20 LOT	89.521155	
21 LOT	49.604853	
22 LOT	190.469729	
23 LOT	21.610635	
24 LOT	44.948093	
25 LOT	63.276885	108.224978 (合筆)
26 LOT	63.030871	
27 LOT	21.691512	
28 LOT	14.998111	
29 LOT	67.937677	
30 LOT	13.969400	
31 LOT	44.323064	
32 LOT	93.196678	
33 LOT	146.614513	
34 LOT	2.921162	
1 入三キリ		1.995468
2 入三キリ		4.488306
3 入三キリ		12.476484
4 入三キリ		1.996665

TOTAL = 3411.479438 20.956923

* * * * * M E N S E K I K E I S A N * * * * *

130 BLOCK

TENMEI	X	Y	(X-X0)*(YN-1-Y0)	(XN-1-X0)*(Y-Y0)
X0.Y0	- 150400.000	- 38900.000		
OS130-5	- 150480.904	- 38954.346		
OS130-6	- 150482.771	- 38952.358	+ 4498.272766	+ 4235.971632
OS130-7	- 150518.921	- 38952.504	+ 6226.465718	+ 4345.808584
OS130-8	- 150522.120	- 38955.509	+ 6411.788480	+ 6601.185789
OS130-9	- 150527.136	- 39030.770	+ 7057.192224	+ 15969.632400
OS130-10	- 150522.468	- 39035.783	+ 16015.140360	+ 17262.907488
OS130-11	- 150488.333	- 39035.945	+ 11994.119739	+ 16648.912260
OS130-12	- 150486.200	- 39033.959	+ 11718.459000	+ 11833.000347
OS130-5	- 150480.904	- 38954.346	+ 10837.818936	+ 4684.625200
			+ 74759.257223	+ 81582.043700
		BAI MENSEKI =	6822.786477	
		MENSEKI =	3411.393238	

1 LOT

TENMEI	X	Y	(X-X0)*(YN-1-Y0)	(XN-1-X0)*(Y-Y0)
X0.Y0	- 150400.000	- 38900.000		
OS130-42	- 150481.431	- 38962.288		
OS130-5	- 150480.904	- 38954.346	+ 5039.348352	+ 4425.449126
OS130-6	- 150482.771	- 38952.358	+ 4498.272766	+ 4235.971632
OS130-13	- 150495.403	- 38952.409	+ 4995.110274	+ 4337.945339
OS130-43	- 150495.672	- 38956.321	+ 5014.073848	+ 5373.192363
OS130-44	- 150495.976	- 38961.307	+ 5405.464296	+ 5865.363304
OS130-42	- 150481.431	- 38962.288	+ 4992.290317	+ 5978.153088
			+ 29944.559853	+ 30216.074852
		BAI MENSEKI =	271.514999	
		MENSEKI =	135.757499	

2 LOT

TENMEI	X	Y	(X-X0)*(YN-1-Y0)	(XN-1-X0)*(Y-Y0)
X0.Y0	- 150400.000	- 38900.000		
OS130-13	- 150495.403	- 38952.409		
OS130-14	- 150504.031	- 38952.444	+ 5452.160679	+ 5003.314932
OS130-69	- 150505.907	- 38975.201	+ 5554.186708	+ 7823.235231
OS130-68	- 150499.822	- 38975.632	+ 7506.714222	+ 8009.958224
OS130-48	- 150496.950	- 38975.828	+ 7332.522400	+ 7569.302616
OS130-46	- 150496.713	- 38971.507	+ 7333.553364	+ 6932.603650
OS130-45	- 150495.988	- 38961.507	+ 6863.813916	+ 5948.526491
OS130-44	- 150495.976	- 38961.307	+ 5903.195832	+ 5884.736316
OS130-43	- 150495.672	- 38956.321	+ 5865.363304	+ 5405.464296
OS130-13	- 150495.403	- 38952.409	+ 5373.192363	+ 5014.073848
			+ 57184.702788	+ 57591.215604
		BAI MENSEKI =	406.512816	
		MENSEKI =	203.256408	

* * * * * M E N S E K I K E I S A N * * * * *

3 LOT

TENMEI	X	Y	(X-X0)*(YN-1-Y0)	(XN-1-X0)*(Y-Y0)
X0.Y0	- 150500.000	- 38900.000		
OS130-14	- 150504.031	- 38952.444		
OS130-15	- 150507.040	- 38952.456	+ 369.205760	+ 211.450136
OS130-70	- 150507.640	- 38959.890	+ 400.763840	+ 421.625600
OS130-72	- 150507.728	- 38960.985	+ 462.829920	+ 465.925400
OS130-73	- 150508.758	- 38973.742	+ 534.106630	+ 569.878176
OS130-74	- 150508.859	- 38974.992	+ 653.280378	+ 656.779936
OS130-69	- 150505.907	- 38975.201	+ 442.977744	+ 666.205659
OS130-14	- 150504.031	- 38952.444	+ 303.135231	+ 309.786708
			+ 3166.299503	+ 3301.651615
		BAI MENSEKI =	135.352112	
		MENSEKI =	67.676056	

4 LOT

TENMEI	X	Y	(X-X0)*(YN-1-Y0)	(XN-1-X0)*(Y-Y0)
X0.Y0	- 150500.000	- 38900.000		
OS130-15	- 150507.040	- 38952.456		
OS130-7	- 150518.921	- 38952.504	+ 992.519976	+ 369.628160
OS130-16	- 150520.084	- 38953.596	+ 1054.490336	+ 1014.089916
OS130-71	- 150520.266	- 38959.062	+ 1086.176536	+ 1186.201208
OS130-70	- 150507.640	- 38959.890	+ 451.233680	+ 1213.730740
OS130-15	- 150507.040	- 38952.456	+ 421.625600	+ 400.763840
			+ 4006.046128	+ 4184.413864
		BAI MENSEKI =	178.367736	
		MENSEKI =	89.183868	

5 LOT

TENMEI	X	Y	(X-X0)*(YN-1-Y0)	(XN-1-X0)*(Y-Y0)
X0.Y0	- 150500.000	- 38900.000		
OS130-16	- 150520.084	- 38953.596		
OS130-8	- 150522.120	- 38955.509	+ 1185.543520	+ 1114.842756
OS130-17	- 150522.348	- 38958.925	+ 1240.515132	+ 1303.421000
OS130-71	- 150520.266	- 38959.062	+ 1194.174050	+ 1319.917576
OS130-16	- 150520.084	- 38953.596	+ 1186.201208	+ 1086.176536
			+ 4806.433910	+ 4824.357868
		BAI MENSEKI =	17.923958	
		MENSEKI =	8.961979	

6 LOT

TENMEI	X	Y	(X-X0)*(YN-1-Y0)	(XN-1-X0)*(Y-Y0)
X0.Y0	- 150500.000	- 38900.000		
OS130-17	- 150522.348	- 38958.925		
OS130-18	- 150522.421	- 38960.027	+ 1321.157425	+ 1341.483396

***** MENSEKI KEISAN *****

TENMEI	X	Y	(X-X0)*(YN-1-Y0)	(XN-1-X0)*(Y-Y0)
OS130-72	- 150507.728	- 38960.985	+ 463.888656	+ 1367.344685
OS130-70	- 150507.640	- 38959.890	+ 465.925400	+ 462.829920
OS130-71	- 150520.266	- 38959.062	+ 1213.730740	+ 451.233680
OS130-17	- 150522.348	- 38958.925	+ 1319.917576	+ 1194.174050
			+ 4784.619797	+ 4817.065731
		BAI MENSEKI =	32.445934	
		MENSEKI =	16.222967	

7 LOT

TENMEI	X	Y	(X-X0)*(YN-1-Y0)	(XN-1-X0)*(Y-Y0)
X0.Y0	- 150500.000	- 38900.000		
OS130-18	- 150522.421	- 38960.027		
OS130-19	- 150523.267	- 38972.715	+ 1396.648209	+ 1630.343015
OS130-73	- 150508.758	- 38973.742	+ 636.837970	+ 1715.755114
OS130-72	- 150507.728	- 38960.985	+ 569.878176	+ 534.106630
OS130-18	- 150522.421	- 38960.027	+ 1367.344685	+ 463.888656
			+ 3970.709040	+ 4344.093415
		BAI MENSEKI =	373.384375	
		MENSEKI =	186.692187	

8 LOT

TENMEI	X	Y	(X-X0)*(YN-1-Y0)	(XN-1-X0)*(Y-Y0)
X0.Y0	- 150500.000	- 38900.000		
OS130-19	- 150523.267	- 38972.715		
OS130-20	- 150523.780	- 38980.410	+ 1729.162700	+ 1870.899470
OS130-75	- 150509.458	- 38981.390	+ 760.517780	+ 1935.454200
OS130-74	- 150508.859	- 38974.992	+ 721.034010	+ 709.274336
OS130-73	- 150508.758	- 38973.742	+ 656.779936	+ 653.280378
OS130-19	- 150523.267	- 38972.715	+ 1715.755114	+ 636.837970
			+ 5583.249540	+ 5805.746354
		BAI MENSEKI =	222.496814	
		MENSEKI =	111.248407	

9 LOT

TENMEI	X	Y	(X-X0)*(YN-1-Y0)	(XN-1-X0)*(Y-Y0)
X0.Y0	- 150500.000	- 38900.000		
OS130-20	- 150523.780	- 38980.410		
OS130-21	- 150524.143	- 38985.862	+ 1941.338630	+ 2041.798360
OS130-77	- 150510.021	- 38986.801	+ 860.423102	+ 2095.636543
OS130-76	- 150509.568	- 38982.445	+ 830.511968	+ 826.181345
OS130-75	- 150509.458	- 38981.390	+ 779.764810	+ 778.739520
OS130-20	- 150523.780	- 38980.410	+ 1935.454200	+ 760.517780

***** MENSEKI KEISAN *****

TENMEI	X	Y	(X-X0)*(YN-1-Y0)	(XN-1-X0)*(Y-Y0)
			+ 6347.492710	+ 6502.873548
		BAI MENSEKI =	155.380838	
		MENSEKI =	77.690419	

10 LOT

TENMEI	X	Y	(X-X0)*(YN-1-Y0)	(XN-1-X0)*(Y-Y0)
X0.Y0	- 150400.000	- 38900.000		
OS130-21	- 150524.143	- 38985.862		
OS130-22	- 150524.349	- 38988.953	+ 10676.853838	+ 11042.892279
OS130-78	- 150510.287	- 38989.855	+ 9810.359511	+ 11173.379395
OS130-79	- 150510.902	- 38996.727	+ 9965.099210	+ 10667.730649
OS130-80	- 150511.748	- 39006.177	+ 10809.048796	+ 11775.241654
OS130-81	- 150511.954	- 39008.480	+ 11886.939858	+ 12122.423040
OS130-82	- 150512.600	- 39015.701	+ 12214.848000	+ 12953.189754
OS130-27	- 150514.365	- 39035.822	+ 13232.144865	+ 15293.557200
OS130-28	- 150504.868	- 39035.867	+ 14243.381496	+ 15538.429455
OS130-63	- 150504.291	- 39021.757	+ 14169.705297	+ 12768.413076
OS130-64	- 150503.721	- 39007.810	+ 12628.757797	+ 11243.612710
OS130-55	- 150489.819	- 39008.165	+ 9683.386390	+ 11218.981965
OS130-54	- 150489.103	- 38999.510	+ 9637.825995	+ 8937.888690
OS130-53	- 150488.088	- 38987.244	+ 8765.636880	+ 7773.702132
OS130-52	- 150497.718	- 38987.078	+ 8525.309192	+ 7670.526864
OS130-65	- 150499.952	- 38987.040	+ 8703.620256	+ 8505.374720
OS130-66	- 150499.895	- 38982.671	+ 8694.860800	+ 8263.131792
OS130-76	- 150509.568	- 38982.445	+ 9058.096128	+ 8235.843275
OS130-77	- 150510.021	- 38986.801	+ 9070.681345	+ 9510.611968
OS130-21	- 150524.143	- 38985.862	+ 10775.736543	+ 9446.623102
			+202552.292190	+204141.553712
		BAI MENSEKI =	1589.261522	
		MENSEKI =	794.630761	

11 LOT

TENMEI	X	Y	(X-X0)*(YN-1-Y0)	(XN-1-X0)*(Y-Y0)
X0.Y0	- 150500.000	- 38900.000		
OS130-22	- 150524.349	- 38988.953		
OS130-23	- 150524.807	- 38995.821	+ 2206.657071	+ 2333.145529
OS130-79	- 150510.902	- 38996.727	+ 1044.640542	+ 2399.506689
OS130-78	- 150510.287	- 38989.855	+ 995.030649	+ 979.599210
OS130-22	- 150524.349	- 38988.953	+ 2187.879395	+ 915.059511
			+ 6434.207657	+ 6627.310939
		BAI MENSEKI =	193.103282	
		MENSEKI =	96.551641	

***** MENSEKI KEISAN *****

12 LOT

TENMEI	X	Y	(X-X0)*(YN-1-Y0)	(XN-1-X0)*(Y-Y0)
X0.Y0	- 150500.000	- 38900.000		
OS130-23	- 150524.807	- 38995.821		
OS130-24	- 150525.443	- 39005.360	+ 2437.973703	+ 2613.665520
OS130-80	- 150511.748	- 39006.177	+ 1237.769280	+ 2701.461411
OS130-79	- 150510.902	- 38996.727	+ 1157.541654	+ 1136.348796
OS130-23	- 150524.807	- 38995.821	+ 2399.506689	+ 1044.640542
			+ 7232.791326	+ 7496.116269
		BAI MENSEKI =	263.324943	
		MENSEKI =	131.662471	

13 LOT

TENMEI	X	Y	(X-X0)*(YN-1-Y0)	(XN-1-X0)*(Y-Y0)
X0.Y0	- 150500.000	- 39000.000		
OS130-24	- 150525.443	- 39005.360		
OS130-25	- 150525.579	- 39007.399	+ 137.103440	+ 188.252757
OS130-81	- 150511.954	- 39008.480	+ 88.447646	+ 216.909920
OS130-80	- 150511.748	- 39006.177	+ 99.623040	+ 73.839858
OS130-24	- 150525.443	- 39005.360	+ 157.161411	+ 62.969280
			+ 482.335537	+ 541.971815
		BAI MENSEKI =	59.636278	
		MENSEKI =	29.818139	

14 LOT

TENMEI	X	Y	(X-X0)*(YN-1-Y0)	(XN-1-X0)*(Y-Y0)
X0.Y0	- 150500.000	- 39000.000		
OS130-25	- 150525.579	- 39007.399		
OS130-26	- 150526.073	- 39014.810	+ 192.914127	+ 378.824990
OS130-82	- 150512.600	- 39015.701	+ 186.606000	+ 409.372173
OS130-81	- 150511.954	- 39008.480	+ 187.689754	+ 106.848000
OS130-25	- 150525.579	- 39007.399	+ 216.909920	+ 88.447646
			+ 784.119801	+ 983.492809
		BAI MENSEKI =	199.373008	
		MENSEKI =	99.686504	

~~15 LOT~~

TENMEI	X	Y	(X-X0)*(YN-1-Y0)	(XN-1-X0)*(Y-Y0)
X0.Y0	- 150500.000	- 39000.000		
OS130-26	- 150526.073	- 39014.810		
OS130-9	- 150527.136	- 39030.770	+ 401.884160	+ 802.266210
OS130-10	- 150522.468	- 39035.783	+ 691.340360	+ 971.007488

***** MENSEKI KEISAN *****

TENMEI	X	Y	(X-X0)*(YN-1-Y0)	(XN-1-X0)*(Y-Y0)
OS130-27	- 150514.365	- 39035.822	+ 514.022795	+ 804.848696
OS130-82	- 150512.600	- 39015.701	+ 451.357200	+ 225.544865
OS130-26	- 150526.073	- 39014.810	+ 409.372173	+ 186.606000
			+ 2467.976688	+ 2990.273259
		BAI MENSEKI =	522.296571	
		MENSEKI =	261.148285	

16 LOT

TENMEI	X	Y	(X-X0)*(YN-1-Y0)	(XN-1-X0)*(Y-Y0)
X0.Y0	- 150500.000	- 39000.000		
OS130-28	- 150504.868	- 39035.867		
OS130-29	- 150503.814	- 39035.872	+ 136.796738	+ 174.624896
OS130-62	- 150503.240	- 39021.789	+ 116.225280	+ 83.103246
OS130-63	- 150504.291	- 39021.757	+ 93.496599	+ 70.492680
OS130-28	- 150504.868	- 39035.867	+ 105.913076	+ 153.905297
			+ 452.431693	+ 482.126119
		BAI MENSEKI =	29.694426	
		MENSEKI =	14.847213	

17 LOT

TENMEI	X	Y	(X-X0)*(YN-1-Y0)	(XN-1-X0)*(Y-Y0)
X0.Y0	- 150400.000	- 39000.000		
OS130-29	- 150503.814	- 39035.872		
OS130-30	- 150502.760	- 39035.877	+ 3686.206720	+ 3724.534878
OS130-61	- 150502.469	- 39028.157	+ 3676.280313	+ 2893.413320
OS130-60	- 150499.231	- 39028.224	+ 2794.047267	+ 2892.085056
OS130-59	- 150499.054	- 39021.917	+ 2795.700096	+ 2174.845827
OS130-62	- 150503.240	- 39021.789	+ 2262.711080	+ 2158.287606
OS130-29	- 150503.814	- 39035.872	+ 2262.003246	+ 3703.425280
			+ 17476.948722	+ 17546.591967
		BAI MENSEKI =	69.643245	
		MENSEKI =	34.821622	

18 LOT

TENMEI	X	Y	(X-X0)*(YN-1-Y0)	(XN-1-X0)*(Y-Y0)
X0.Y0	- 150400.000	- 39000.000		
OS130-30	- 150502.760	- 39035.877		
OS130-31	- 150492.064	- 39035.928	+ 3302.980128	+ 3691.961280
OS130-58	- 150491.491	- 39028.383	+ 3287.088648	+ 2613.052512
OS130-60	- 150499.231	- 39028.224	+ 2816.473473	+ 2582.241984
OS130-61	- 150502.469	- 39028.157	+ 2892.085056	+ 2794.047267
OS130-30	- 150502.760	- 39035.877	+ 2893.413320	+ 3676.280313

***** MENSEKI KEISAN *****

TENMEI	X	Y	(X-X0)*(YN-1-Y0)	(XN-1-X0)*(Y-Y0)
			+ 15192.040625	+ 15357.583356
		BAI MENSEKI =	165.542731	
		MENSEKI =	82.771365	

19 LOT

TENMEI	X	Y	(X-X0)*(YN-1-Y0)	(XN-1-X0)*(Y-Y0)
X0.Y0	- 150400.000	- 39000.000		
OS130-31	- 150492.064	- 39035.928		
OS130-11	- 150488.333	- 39035.945	+ 3173.628024	+ 3309.240480
OS130-12	- 150486.200	- 39033.959	+ 3098.459000	+ 2999.700347
OS130-32	- 150485.837	- 39028.499	+ 2914.938683	+ 2456.613800
OS130-58	- 150491.491	- 39028.383	+ 2607.402009	+ 2436.311571
OS130-31	- 150492.064	- 39035.928	+ 2613.052512	+ 3287.088648
			+ 14407.480228	+ 14488.954846
		BAI MENSEKI =	81.474618	
		MENSEKI =	40.737309	

~~20 LOT~~

TENMEI	X	Y	(X-X0)*(YN-1-Y0)	(XN-1-X0)*(Y-Y0)
X0.Y0	- 150400.000	- 39000.000		
OS130-32	- 150485.837	- 39028.499		
OS130-33	- 150484.769	- 39012.445	+ 2415.831731	+ 1068.241465
OS130-56	- 150490.142	- 39012.072	+ 1121.817190	+ 1023.331368
OS130-57	- 150490.977	- 39022.163	+ 1098.274344	+ 1997.817146
OS130-58	- 150491.491	- 39028.383	+ 2027.715033	+ 2582.200191
OS130-32	- 150485.837	- 39028.499	+ 2436.311571	+ 2607.402009
			+ 9099.949869	+ 9278.992179
		BAI MENSEKI =	179.042310	
		MENSEKI =	89.521155	

21 LOT

TENMEI	X	Y	(X-X0)*(YN-1-Y0)	(XN-1-X0)*(Y-Y0)
X0.Y0	- 150400.000	- 39000.000		
OS130-58	- 150491.491	- 39028.383		
OS130-57	- 150490.977	- 39022.163	+ 2582.200191	+ 2027.715033
OS130-59	- 150499.054	- 39021.917	+ 2195.333802	+ 1993.942909
OS130-60	- 150499.231	- 39028.224	+ 2174.845827	+ 2795.700096
OS130-58	- 150491.491	- 39028.383	+ 2582.241984	+ 2816.473473
			+ 9534.621804	+ 9633.831511
		BAI MENSEKI =	99.209707	
		MENSEKI =	49.604853	

***** MENSEKI KEISAN *****

22 LOT

TENMEI	X	Y	(X-X0)*(YN-1-Y0)	(XN-1-X0)*(Y-Y0)
X0.Y0	- 150400.000	- 39000.000		
OS130-57	- 150490.977	- 39022.163		
OS130-56	- 150490.142	- 39012.072	+ 1997.817146	+ 1098.274344
OS130-55	- 150489.819	- 39008.165	+ 1084.294968	+ 736.009430
OS130-64	- 150503.721	- 39007.810	+ 846.881965	+ 701.486390
OS130-63	- 150504.291	- 39021.757	+ 814.512710	+ 2256.657797
OS130-62	- 150503.240	- 39021.789	+ 2246.192680	+ 2272.396599
OS130-59	- 150499.054	- 39021.917	+ 2158.287606	+ 2262.711080
OS130-57	- 150490.977	- 39022.163	+ 1993.942909	+ 2195.333802
			+ 11141.929984	+ 11522.869442
	BAI MENSEKI =		380.939458	
	MENSEKI =		190.469729	

23 LOT

TENMEI	X	Y	(X-X0)*(YN-1-Y0)	(XN-1-X0)*(Y-Y0)
X0.Y0	- 150400.000	- 39000.000		
OS130-33	- 150484.769	- 39012.445		
OS130-34	- 150484.493	- 39008.301	+ 1051.515385	+ 703.667469
OS130-55	- 150489.819	- 39008.165	+ 745.587519	+ 689.885345
OS130-56	- 150490.142	- 39012.072	+ 736.009430	+ 1084.294968
OS130-33	- 150484.769	- 39012.445	+ 1023.331368	+ 1121.817190
			+ 3556.443702	+ 3599.664972
	BAI MENSEKI =		43.221270	
	MENSEKI =		21.610635	

24 LOT

TENMEI	X	Y	(X-X0)*(YN-1-Y0)	(XN-1-X0)*(Y-Y0)
X0.Y0	- 150400.000	- 38900.000		
OS130-34	- 150484.493	- 39008.301		
OS130-35	- 150483.933	- 38999.889	+ 9090.027833	+ 8439.921277
OS130-54	- 150489.103	- 38999.510	+ 8900.409567	+ 8352.172830
OS130-55	- 150489.819	- 39008.165	+ 8937.888690	+ 9637.825995
OS130-34	- 150484.493	- 39008.301	+ 9139.185345	+ 9727.487519
			+ 36067.511435	+ 36157.407621
	BAI MENSEKI =		89.896186	
	MENSEKI =		44.948093 + 63.276885 = 108.224978	(25LOTと同等)

25 LOT

TENMEI	X	Y	(X-X0)*(YN-1-Y0)	(XN-1-X0)*(Y-Y0)
X0.Y0	- 150400.000	- 38900.000		
OS130-35	- 150483.933	- 38999.889		
OS130-36	- 150483.097	- 38987.330	+ 8300.476233	+ 7329.868890

***** MENSEKI KEISAN *****

TENMEI	X	Y	(X-X0)*(YN-1-Y0)	(XN-1-X0)*(Y-Y0)
OS130-53	- 150488.088	- 38987.244	+ 7692.725040	+ 7249.714668
OS130-54	- 150489.103	- 38999.510	+ 7773.702132	+ 8765.636880
OS130-35	- 150483.933	- 38999.889	+ 8352.172830	+ 8900.409567
			+ 32119.076235	+ 32245.630005
		BAI MENSEKI =	126.553770	
		MENSEKI =	63.276885 + 44.948093 = 108.224978	(24LOT7合算)

26 LOT

TENMEI	X	Y	(X-X0)*(YN-1-Y0)	(XN-1-X0)*(Y-Y0)
X0.Y0	- 150400.000	- 38900.000		
OS130-36	- 150483.097	- 38987.330		
OS130-37	- 150482.834	- 38983.372	+ 7233.893220	+ 6927.963084
OS130-51	- 150497.393	- 38982.420	+ 8119.849196	+ 6827.178280
OS130-52	- 150497.718	- 38987.078	+ 8053.917560	+ 8480.787654
OS130-53	- 150488.088	- 38987.244	+ 7670.526864	+ 8525.309192
OS130-36	- 150483.097	- 38987.330	+ 7249.714668	+ 7692.725040
			+ 38327.901508	+ 38453.963250
		BAI MENSEKI =	126.061742	
		MENSEKI =	63.030871	

27 LOT

TENMEI	X	Y	(X-X0)*(YN-1-Y0)	(XN-1-X0)*(Y-Y0)
X0.Y0	- 150400.000	- 38900.000		
OS130-37	- 150482.834	- 38983.372		
OS130-38	- 150482.735	- 38981.889	+ 6897.782420	+ 6783.193426
OS130-50	- 150497.290	- 38980.936	+ 7966.980810	+ 6696.239960
OS130-51	- 150497.393	- 38982.420	+ 7882.599848	+ 8018.641800
OS130-37	- 150482.834	- 38983.372	+ 6827.178280	+ 8119.849196
			+ 29574.541358	+ 29617.924382
		BAI MENSEKI =	43.383024	
		MENSEKI =	21.691512	

28 LOT

TENMEI	X	Y	(X-X0)*(YN-1-Y0)	(XN-1-X0)*(Y-Y0)
X0.Y0	- 150400.000	- 38900.000		
OS130-52	- 150497.718	- 38987.078		
OS130-51	- 150497.393	- 38982.420	+ 8480.787654	+ 8053.917560
OS130-50	- 150497.290	- 38980.936	+ 8018.641800	+ 7882.599848
OS130-67	- 150499.870	- 38980.745	+ 8083.078320	+ 7855.681050
OS130-66	- 150499.895	- 38982.671	+ 8066.021775	+ 8256.352770
OS130-65	- 150499.952	- 38987.040	+ 8263.131792	+ 8694.860800
OS130-52	- 150497.718	- 38987.078	+ 8505.374720	+ 8703.620256

***** MENSEKI KEISAN *****

TENMEI	X	Y	(X-X0)*(YN-1-Y0)	(XN-1-X0)*(Y-Y0)
			+ 49417.036061	+ 49447.032284
		BAI MENSEKI =	29.996223	
		MENSEKI =	14.998111	

29 LOT

TENMEI	X	Y	(X-X0)*(YN-1-Y0)	(XN-1-X0)*(Y-Y0)
X0.Y0	- 150400.000	- 38900.000		
OS130-66	- 150499.895	- 38982.671		
OS130-67	- 150499.870	- 38980.745	+ 8256.352770	+ 8066.021775
OS130-68	- 150499.822	- 38975.632	+ 8060.127390	+ 7553.367840
OS130-69	- 150505.907	- 38975.201	+ 8009.958224	+ 7506.714222
OS130-74	- 150508.859	- 38974.992	+ 8186.305659	+ 7942.177744
OS130-75	- 150509.458	- 38981.390	+ 8208.474336	+ 8860.034010
OS130-76	- 150509.568	- 38982.445	+ 8917.739520	+ 9024.264810
OS130-66	- 150499.895	- 38982.671	+ 8235.843275	+ 9058.096128
			+ 57874.801174	+ 58010.676529
		BAI MENSEKI =	135.875355	
		MENSEKI =	67.937677	

30 LOT

TENMEI	X	Y	(X-X0)*(YN-1-Y0)	(XN-1-X0)*(Y-Y0)
X0.Y0	- 150400.000	- 38900.000		
OS130-50	- 150497.290	- 38980.936		
OS130-49	- 150497.088	- 38977.905	+ 7857.914368	+ 7579.377450
OS130-48	- 150496.950	- 38975.828	+ 7552.889750	+ 7361.988864
OS130-68	- 150499.822	- 38975.632	+ 7569.302616	+ 7332.522400
OS130-67	- 150499.870	- 38980.745	+ 7553.367840	+ 8060.127390
OS130-50	- 150497.290	- 38980.936	+ 7855.681050	+ 8083.078320
			+ 38389.155624	+ 38417.094424
		BAI MENSEKI =	27.938800	
		MENSEKI =	13.969400	

31 LOT

TENMEI	X	Y	(X-X0)*(YN-1-Y0)	(XN-1-X0)*(Y-Y0)
X0.Y0	- 150400.000	- 38900.000		
OS130-38	- 150482.735	- 38981.889		
OS130-39	- 150482.533	- 38978.856	+ 6758.544837	+ 6524.151160
OS130-49	- 150497.088	- 38977.905	+ 7655.971328	+ 6429.733365
OS130-50	- 150497.290	- 38980.936	+ 7579.377450	+ 7857.914368
OS130-38	- 150482.735	- 38981.889	+ 6696.239960	+ 7966.980810
			+ 28690.133575	+ 28778.779703
		BAI MENSEKI =	88.646128	
		MENSEKI =	44.323064	

* * * * * M E N S E K I K E I S A N * * * * *

32 LOT

TENMEI	X	Y	(X-X0)*(YN-1-Y0)	(XN-1-X0)*(Y-Y0)
X0.Y0	- 150400.000	- 38900.000		
OS130-39	- 150482.533	- 38978.856		
OS130-40	- 150482.109	- 38972.478	+ 6474.787304	+ 5981.826774
OS130-47	- 150493.823	- 38971.736	+ 6800.103394	+ 5890.171224
OS130-46	- 150496.713	- 38971.507	+ 6937.803768	+ 6709.001261
OS130-48	- 150496.950	- 38975.828	+ 6932.603650	+ 7333.553364
OS130-49	- 150497.088	- 38977.905	+ 7361.988864	+ 7552.889750
OS130-39	- 150482.533	- 38978.856	+ 6429.733365	+ 7655.971328
			+ 40937.020345	+ 41123.413701
			BAI MENSEKI = 186.393356	
			MENSEKI = 93.196678	

33 LOT

TENMEI	X	Y	(X-X0)*(YN-1-Y0)	(XN-1-X0)*(Y-Y0)
X0.Y0	- 150400.000	- 38900.000		
OS130-40	- 150482.109	- 38972.478		
OS130-41	- 150481.444	- 38962.488	+ 5902.898232	+ 5130.827192
OS130-45	- 150495.988	- 38961.507	+ 5998.098144	+ 5009.376108
OS130-46	- 150496.713	- 38971.507	+ 5948.526491	+ 6863.813916
OS130-47	- 150493.823	- 38971.736	+ 6709.001261	+ 6937.803768
OS130-40	- 150482.109	- 38972.478	+ 5890.171224	+ 6800.103394
			+ 30448.695352	+ 30741.924378
			BAI MENSEKI = 293.229026	
			MENSEKI = 146.614513	

34 LOT

TENMEI	X	Y	(X-X0)*(YN-1-Y0)	(XN-1-X0)*(Y-Y0)
X0.Y0	- 150400.000	- 38900.000		
OS130-41	- 150481.444	- 38962.488		
OS130-42	- 150481.431	- 38962.288	+ 5088.460328	+ 5072.983872
OS130-44	- 150495.976	- 38961.307	+ 5978.153088	+ 4992.290317
OS130-45	- 150495.988	- 38961.507	+ 5884.736316	+ 5903.195832
OS130-41	- 150481.444	- 38962.488	+ 5009.376108	+ 5998.098144
			+ 21960.725840	+ 21966.568165
			BAI MENSEKI = 5.842325	
			MENSEKI = 2.921162	

1 入替り

TENMEI	X	Y	(X-X0)*(YN-1-Y0)	(XN-1-X0)*(Y-Y0)
X0.Y0	- 150400.000	- 38900.000		
OS130-1	- 150480.771	- 38952.350		
OS130-5	- 150480.904	- 38954.346	+ 4235.324400	+ 4389.580766

* * * * * M E N S E K I K E I S A N * * * * *

TENMEI	X	Y	(X-X0)*(YN-1-Y0)	(XN-1-X0)*(Y-Y0)
OS130-6	- 150482.771	- 38952.358	+ 4498.272766	+ 4235.971632
OS130-1	- 150480.771	- 38952.350	+ 4229.008018	+ 4333.061850
			+ 12962.605184	+ 12958.614248
		BAI MENSEKI =	3.990936	
		MENSEKI =	1.995468	

2 入替り

TENMEI	X	Y	(X-X0)*(YN-1-Y0)	(XN-1-X0)*(Y-Y0)
X0.Y0	- 150500.000	- 38900.000		
OS130-2	- 150521.921	- 38952.516		
OS130-7	- 150518.921	- 38952.504	+ 993.655236	+ 1150.940184
OS130-8	- 150522.120	- 38955.509	+ 1161.388480	+ 1050.285789
OS130-2	- 150521.921	- 38952.516	+ 1216.812789	+ 1161.653920
			+ 3371.856505	+ 3362.879893
		BAI MENSEKI =	8.976612	
		MENSEKI =	4.488306	

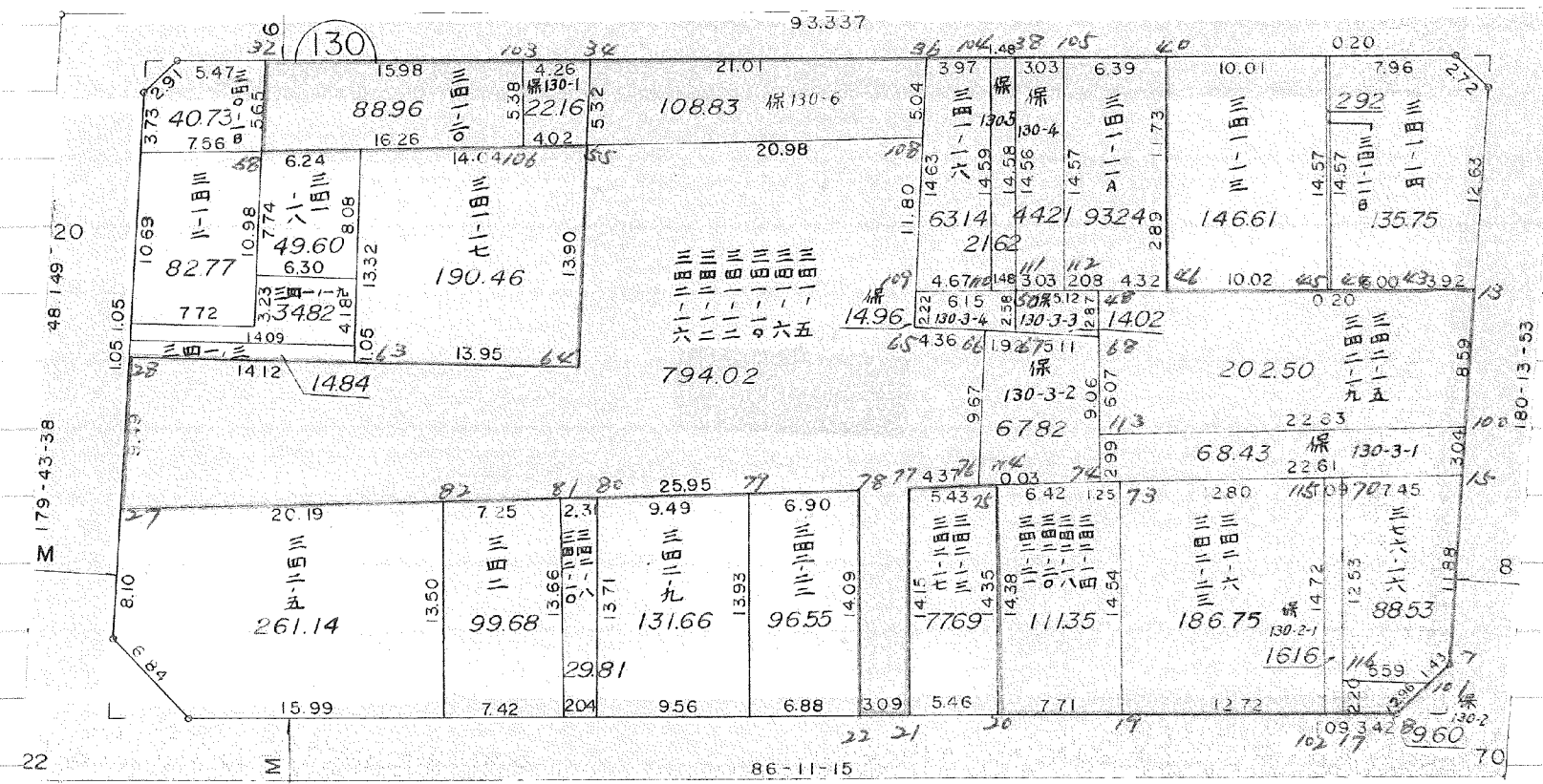
3 入替り

TENMEI	X	Y	(X-X0)*(YN-1-Y0)	(XN-1-X0)*(Y-Y0)
X0.Y0	- 150500.000	- 39000.000		
OS130-3	- 150527.468	- 39035.759		
OS130-9	- 150527.136	- 39030.770	+ 970.356224	+ 845.190360
OS130-10	- 150522.468	- 39035.783	+ 691.340360	+ 971.007488
OS130-3	- 150527.468	- 39035.759	+ 982.887444	+ 803.433212
			+ 2644.584028	+ 2619.631060
		BAI MENSEKI =	24.952968	
		MENSEKI =	12.476484	

4 入替り

TENMEI	X	Y	(X-X0)*(YN-1-Y0)	(XN-1-X0)*(Y-Y0)
X0.Y0	- 150400.000	- 39000.000		
OS130-4	- 150486.333	- 39035.955		
OS130-11	- 150488.333	- 39035.945	+ 3176.013015	+ 3103.239685
OS130-12	- 150486.200	- 39033.959	+ 3098.459000	+ 2999.700347
OS130-4	- 150486.333	- 39035.955	+ 2931.782347	+ 3099.321000
			+ 9206.254362	+ 9202.261032
		BAI MENSEKI =	3.993330	
		MENSEKI =	1.996665	

確定以後変更



2 LOT

元NO. X _o Y _o	X	Y	(X-X _o) (Y _{N-1} -Y _o)	(X _{N-1} -X _o) (Y-Y _o)
48	-150496.950	-38975.828		
46	-150496.713	-38971.507	7333.553364	6932.603650
45	-150495.988	-38961.507	6863.813916	5948.526491
44	-150495.976	-38961.307	5903.195832	5884.736316
43	-150495.672	-38956.321	5865.363304	5405.464296
13	-150495.403	-38952.409	5373.192363	5014.073848
100	-150503.998	-38952.444	5450.431182	5003.314932
113	-150505.874	-38975.204	5552.456056	7821.065592
68	-150499.822	-38975.632	7507.013688	8007.462368
48	-150496.950	-38975.828	7332.522400	7569.302616
			57181.542105	57586.550109
			平均値=	405.008004
			分散=	202.504002

3 LOT

元NO. X _o Y _o	X	Y	(X-X _o) (Y _{N-1} -Y _o)	(X _{N-1} -X _o) (Y-Y _o)
100	-150503.998	-38952.444		
15	-150507.040	-38952.456	369.205760	209.719088
70	-150507.640	-38959.890	400.763840	421.625600
115	-150507.728	-38960.981	462.829920	465.894840
73	-150508.758	-38973.742	534.071598	569.878176
74	-150508.859	-38974.992	653.280378	656.779936
113	-150505.874	-38975.204	440.503008	666.232236
100	-150503.998	-38952.444	300.665592	308.056056
			3161.320096	3298.185932
			平均値=	136.865836
			分散=	68.432918

4 LOT

元NO. X _o Y _o	X	Y	(X-X _o) (Y _{N-1} -Y _o)	(X _{N-1} -X _o) (Y-Y _o)
70	-150507.640	-38959.890		
15	-150507.040	-38952.456	421.625600	400.763840
7	-150518.921	-38952.504	992.519976	369.628160
101	-150519.963	-38953.482	1048.137352	1011.932922
116	-150520.149	-38959.069	1077.608818	1179.194447
70	-150507.640	-38959.890	451.287160	1206.723610
			3991.178906	4168.242979

ハイムセキ= 177.064073
 ムセキ= 88.532036

5 LOT

元NO. X。Y。	X	Y	(X-X。)(YN-1-Y。)	(XN-1-X。)(Y-Y。)
	-150500.000	-38900.000		
116	-150520.149	-38959.069		
101	-150519.963	-38953.482	1179.194447	1077.608818
8	-150522.120	-38955.509	1183.021840	1108.126167
17	-150522.348	-38958.925	1240.515132	1303.421000
116	-150520.149	-38959.069	1187.279825	1320.074012
			4790.011244	4809.229997
			ハイムセキ=	19.218753
			ムセキ=	9.609376

~~6 LOT~~

元NO. X。Y。	X	Y	(X-X。)(YN-1-Y。)	(XN-1-X。)(Y-Y。)
	-150500.000	-38900.000		
115	-150507.728	-38960.981		
70	-150507.640	-38959.890	465.894840	462.829920
116	-150520.149	-38959.069	1206.723610	451.287160
17	-150522.348	-38958.925	1320.074012	1187.279825
102	-150522.421	-38960.022	1321.157425	1341.371656
115	-150507.728	-38960.981	463.850016	1367.255001
			4777.699903	4810.023562
			ハイムセキ=	32.323659
			ムセキ=	16.161829

7 LOT

元NO. X。Y。	X	Y	(X-X。)(YN-1-Y。)	(XN-1-X。)(Y-Y。)
	-150500.000	-38900.000		
73	-150508.758	-38973.742		
115	-150507.728	-38960.981	569.878176	534.071598
102	-150522.421	-38960.022	1367.255001	463.850016
19	-150523.267	-38972.715	1396.531874	1630.343015
73	-150508.758	-38973.742	636.837970	1715.755114
			3970.503021	4344.019743
			ハイムセキ=	373.516722
			ムセキ=	186.758361

分筆後の座標なし

8 LOT

元NO. X _o Y _o	X	Y	(X-X _o) (Y _{N-1} -Y _o)	(X _{N-1} -X _o) (Y-Y _o)
73	-150508.758	-38973.742		
19	-150523.267	-38972.715	1715.755114	636.837970
20	-150523.780	-38980.410	1729.162700	1870.899470
75	-150509.458	-38981.390	760.517780	1935.454200
114	-150509.424	-38981.392	767.019360	769.805536
74	-150508.859	-38974.992	721.051728	706.724608
73	-150508.758	-38973.742	656.779936	653.280378
			6350.286618	6573.002162
			ハイムセキ=	222.715544
			ムセキ=	111.357772

20 LOT

元NO. X _o Y _o	X	Y	(X-X _o) (Y _{N-1} -Y _o)	(X _{N-1} -X _o) (Y-Y _o)
32	-150485.837	-39028.499		
103	-150484.776	-39012.552	2416.031224	1077.426024
106	-150490.150	-39012.171	1131.562800	1031.808696
58	-150491.491	-39028.383	1113.536961	2558.727450
32	-150485.837	-39028.499	2436.311571	2607.402009
			7097.442556	7275.364179
			ハイムセキ=	177.921623
			ムセキ=	88.960811

23 LOT

元NO. X _o Y _o	X	Y	(X-X _o) (Y _{N-1} -Y _o)	(X _{N-1} -X _o) (Y-Y _o)
103	-150484.776	-39012.552		
34	-150484.493	-39008.301	1060.556136	703.725576
55	-150489.819	-39008.165	745.587519	689.885345
106	-150490.150	-39012.171	736.074750	1093.187049
103	-150484.776	-39012.552	1031.808696	1131.562800
			3574.027101	3618.360770
			ハイムセキ=	44.333669
			ムセキ=	22.166834

24 LOT

テノNO.	X	Y	(X-X ₀)(YN-1-Y ₀)	(XN-1-X ₀)(Y-Y ₀)
X ₀ Y ₀	-150400.000	-38900.000		
34	-150484.493	-39008.301		
35	-150483.933	-38999.889	9090.027833	8439.921277
107	-150489.127	-38999.508	8902.806903	8352.004964
55	-150489.819	-39008.165	8937.709052	9640.421955
34	-150484.493	-39008.301	9139.185345	9727.487519
			36069.729133	36159.835715
			ハ イメンセキ=	90.106582
			メンセキ=	45.053291 + 63.780647 = 108.833938

合筆あり

25 LOT

テノNO.	X	Y	(X-X ₀)(YN-1-Y ₀)	(XN-1-X ₀)(Y-Y ₀)
X ₀ Y ₀	-150400.000	-38900.000		
35	-150483.933	-38999.889		
36	-150483.097	-38987.330	8300.476233	7329.868890
108	-150488.146	-38987.243	7697.790180	7249.631571
107	-150489.127	-38999.508	7775.706861	8771.232168
35	-150483.933	-38999.889	8352.004964	8902.806903
			32125.978238	32253.539532
			ハ イメンセキ=	127.561294
			メンセキ=	63.780647 + 45.053291 = 108.833938

24, 25 LOT は合筆あり

合筆あり

26 LOT

テノNO.	X	Y	(X-X ₀)(YN-1-Y ₀)	(XN-1-X ₀)(Y-Y ₀)
X ₀ Y ₀	-150400.000	-38900.000		
36	-150483.097	-38987.330		
104	-150482.833	-38983.367	7233.805890	6927.547599
110	-150497.396	-38982.415	8119.612332	6826.681695
109	-150497.730	-38987.078	8054.417950	8481.048888
108	-150488.146	-38987.243	7675.577388	8526.258390
36	-150483.097	-38987.330	7249.631571	7697.790180
			38333.045131	38459.326752
			ハ イメンセキ=	126.281621
			メンセキ=	63.140810

27 LOT

テノNO.	X	Y	(X-X ₀)(YN-1-Y ₀)	(XN-1-X ₀)(Y-Y ₀)
X ₀ Y ₀	-150400.000	-38900.000		
104	-150482.833	-38983.367		

38	-150482.735	-38981.889	6897.368745	6783.111537
111	-150497.268	-38980.937	7965.179252	6696.322695
50	-150497.290	-38980.936	7874.360730	7872.482848
110	-150497.396	-38982.415	7882.842656	8018.155350
104	-150482.833	-38983.367	6826.681695	8119.612332
			37446.433078	37489.684762
			h ² イムセキ=	43.251684
			ムセキ=	21.625842

28 LOT

元NO.	X	Y	(X-X ₀)(Y _{N-1} -Y ₀)	(X _{N-1} -X ₀)(Y-Y ₀)
X ₀ Y ₀	-150400.000	-38900.000		
109	-150497.730	-38987.078		
110	-150497.396	-38982.415	8481.048888	8054.417950
50	-150497.290	-38980.936	8018.155350	7882.842656
67	-150499.870	-38980.745	8083.078320	7855.681050
66	-150499.895	-38982.671	8066.021775	8256.352770
65	-150499.952	-38987.040	8263.131792	8694.860800
109	-150497.730	-38987.078	8506.419200	8703.620256
			49417.855325	49447.775482
			h ² イムセキ=	29.920157
			ムセキ=	14.960078

29 LOT

元NO.	X	Y	(X-X ₀)(Y _{N-1} -Y ₀)	(X _{N-1} -X ₀)(Y-Y ₀)
X ₀ Y ₀	-150400.000	-38900.000		
66	-150499.895	-38982.671		
67	-150499.870	-38980.745	8256.352770	8066.021775
68	-150499.822	-38975.632	8060.127390	7553.367840
113	-150505.874	-38975.204	8007.462368	7507.013688
74	-150508.859	-38974.992	8186.632236	7939.703008
114	-150509.424	-38981.392	8205.924608	8860.251728
75	-150509.458	-38981.390	8909.005536	8906.019360
76	-150509.568	-38982.445	8917.739520	9024.264810
66	-150499.895	-38982.671	8235.843275	9058.096128
			66779.087703	66914.738337
			h ² イムセキ=	135.650634
			ムセキ=	67.825317

30 LOT

元NO.	X	Y	(X-X ₀)(Y _{N-1} -Y ₀)	(X _{N-1} -X ₀)(Y-Y ₀)
X ₀ Y ₀	-150400.000	-38900.000		
111	-150497.268	-38980.937		
112	-150497.080	-38977.912	7857.363960	7578.344416
48	-150496.950	-38975.828	7553.568400	7361.382240
68	-150499.822	-38975.632	7569.302616	7332.522400
67	-150499.870	-38980.745	7553.367840	8060.127390
50	-150497.290	-38980.936	7855.681050	8083.078320
111	-150497.268	-38980.937	7872.482848	7874.360730
			46261.766714	46289.815496
			平均値=	28.048782
			分散=	14.024391

31 LOT

元NO.	X	Y	(X-X ₀)(Y _{N-1} -Y ₀)	(X _{N-1} -X ₀)(Y-Y ₀)
X ₀ Y ₀	-150400.000	-38900.000		
38	-150482.735	-38981.889		
105	-150482.533	-38978.858	6758.544837	6524.316630
112	-150497.080	-38977.912	7655.534640	6430.311096
111	-150497.268	-38980.937	7578.344416	7857.363960
38	-150482.735	-38981.889	6696.322695	7965.179252
			28688.746588	28777.170938
			平均値=	88.424350
			分散=	44.212175

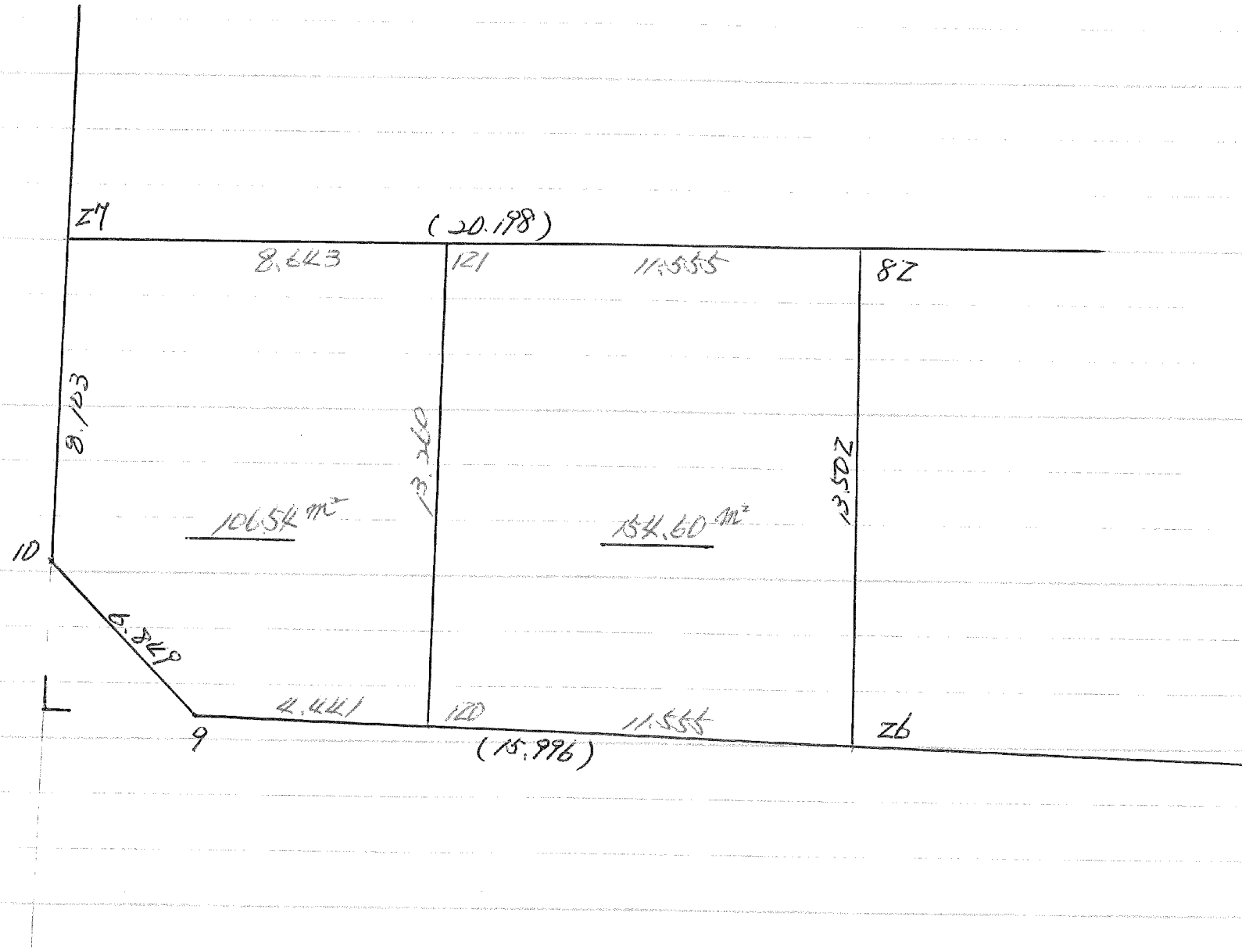
32 LOT

元NO.	X	Y	(X-X ₀)(Y _{N-1} -Y ₀)	(X _{N-1} -X ₀)(Y-Y ₀)
X ₀ Y ₀	-150400.000	-38900.000		
105	-150482.533	-38978.858		
40	-150482.109	-38972.478	6474.951522	5981.826774
47	-150493.823	-38971.736	6800.103394	5890.171224
46	-150496.713	-38971.507	6937.803768	6709.001261
48	-150496.950	-38975.828	6932.603650	7333.553364
112	-150497.080	-38977.912	7361.382240	7553.568400
105	-150482.533	-38978.858	6430.311096	7655.534640
			40937.155670	41123.655663
			平均値=	186.499993
			分散=	93.249996

10 LOT

チノNO. X _o Y _o	X	Y	(X-X _o)(Y _{N-1} -Y _o)	(X _{N-1} -X _o)(Y-Y _o)
	-150400.000	-38900.000		
28	-150504.868	-39035.867		
63	-150504.291	-39021.757	14169.705297	12768.413076
64	-150503.721	-39007.810	12628.757797	11243.612710
55	-150489.819	-39008.165	9683.386390	11218.981965
107	-150489.127	-38999.508	9640.421955	8937.709052
108	-150488.146	-38987.243	8771.232168	7775.706861
109	-150497.730	-38987.078	8526.258390	7675.577388
65	-150499.952	-38987.040	8703.620256	8506.419200
66	-150499.895	-38982.671	8694.860800	8263.131792
76	-150509.568	-38982.445	9058.096128	8235.843275
77	-150510.021	-38986.801	9070.681345	9510.611968
21	-150524.143	-38985.862	10775.736543	9446.623102
22	-150524.349	-38988.953	10676.853838	11042.892279
78	-150510.287	-38989.855	9810.359511	11173.379395
79	-150510.902	-38996.727	9965.099210	10667.730649
80	-150511.748	-39006.177	10809.048796	11775.241654
81	-150511.954	-39008.480	11886.939858	12122.423040
82	-150512.600	-39015.701	12214.848000	12953.189754
27	-150514.365	-39035.822	13232.144865	15293.557200
28	-150504.868	-39035.867	14243.381496	15538.429455
			202561.432643	204149.473815
			ハイムンセキ=	1588.041172
			ムンセキ=	794.020586

B No. 130



1 LOT

元NO. X, Y.	X	Y	(X-X.) (YN-1-Y.)	(XN-1-X.) (Y-Y.)
	-150500.000	-39000.000		
26	-150526.073	-39014.810		
120	-150526.841	-39026.339	397.515210	686.736747
121	-150513.610	-39027.212	358.473790	730.397292
82	-150512.600	-39015.701	342.871200	213.690610
26	-150526.073	-39014.810	409.372173	186.606000
			1508.232373	1817.430649
			ハ イノセキ=	309.198276
			ノセキ=	154.599138

154.60 m²

5.58.4.1 59 招分計⁶⁰ (12.5)

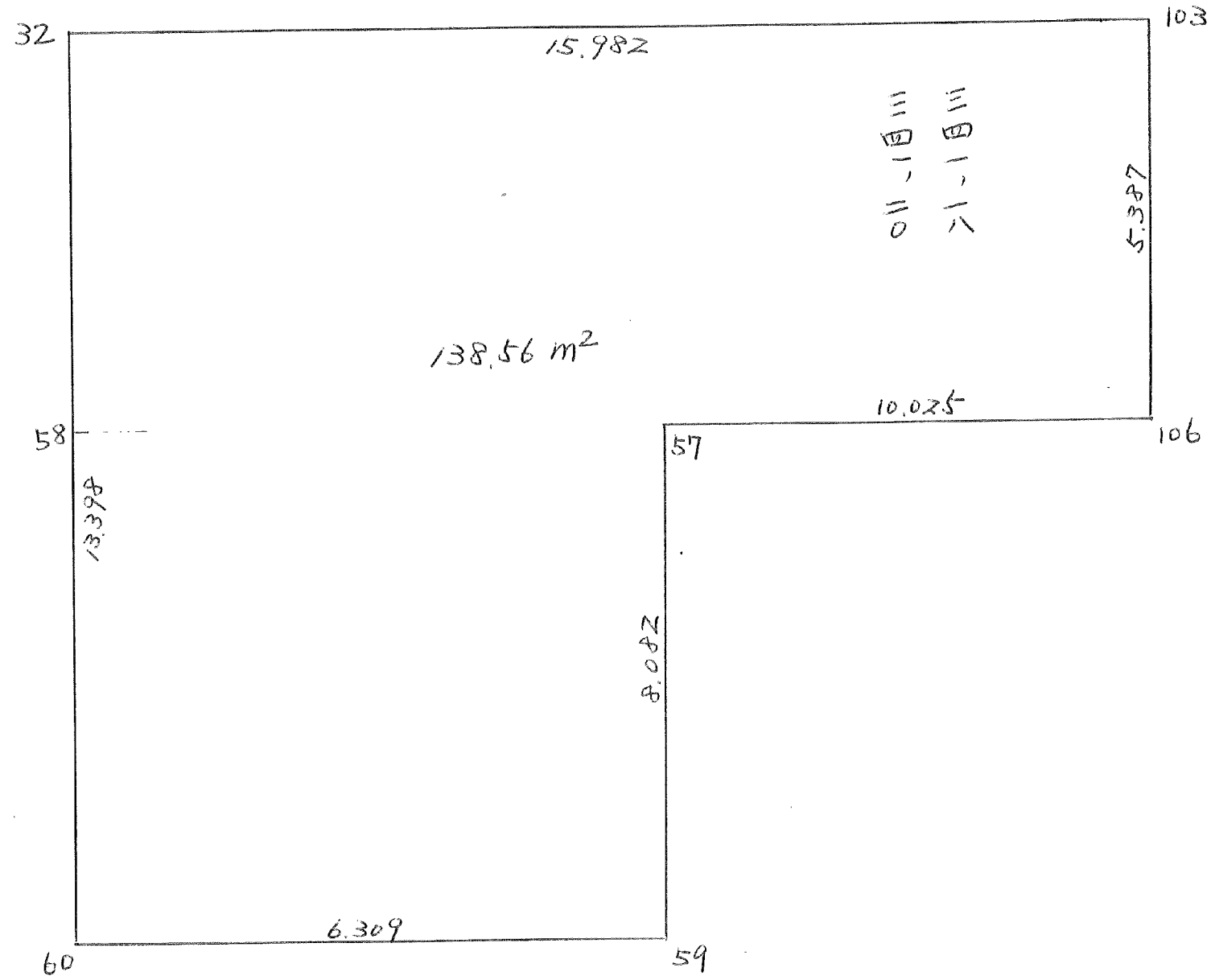
261.14 - 106.54 = 154.60

2 LOT

元NO. X, Y.	X	Y	(X-X.) (YN-1-Y.)	(XN-1-X.) (Y-Y.)
	-150500.000	-39000.000		
120	-150526.841	-39026.339		
9	-150527.136	-39030.770	714.735104	825.897570
10	-150522.468	-39035.783	691.340360	971.007488
27	-150514.365	-39035.822	514.022795	804.848696
121	-150513.610	-39027.212	487.537420	390.900380
120	-150526.841	-39026.339	730.397292	358.473790
			3138.032971	3351.127924
			ハ イノセキ=	213.094953
			ノセキ=	106.547476

106.54 m²

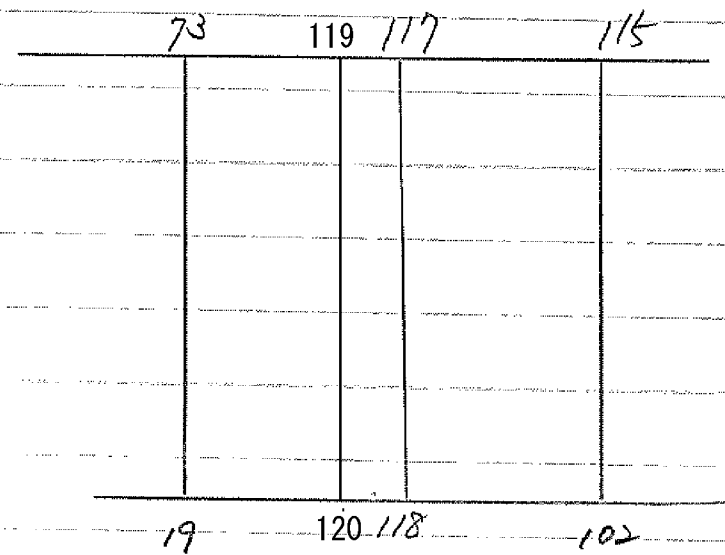
BNO, 130



130 BLOCK

7DNO. $X_0, Y_0 =$	X	Y	$(X-X_0) (Y_{N-1}-Y_0)$	$(X_{N-1}-X_0) (Y-Y_0)$
	-150400.000	-39000.000		
32	-150485.837	-39028.499	2416.031224	1077.426024
103	-150484.776	-39012.552	1131.562800	1031.808696
106	-150490.150	-39012.171	1107.281067	1997.994450
57	-150490.977	-39022.163	2195.333802	1993.942909
59	-150499.054	-39021.917	2174.845827	2795.700096
60	-150499.231	-39028.224	2582.241984	2816.473473
58	-150491.491	-39028.383	2436.311571	2607.402009
32	-150485.837	-39028.499		
			14043.608275	14320.747657
			17 イ/セキ=	277.139382
			20 セキ=	138.569691

130 Block



元NO.	X	Y	(X-X ₀)(Y _{N-1} -Y ₀)	(X _{N-1} -X ₀)(Y-Y ₀)
X ₀ ,Y ₀ =	-150500.000	-38900.000		
115	-150507.728	-38960.981		
102	-150522.421	-38960.022	1367.255001	463.850016
19	-150523.267	-38972.715	1396.531874	1630.343015
73	-150508.758	-38973.742	636.837970	1715.755114
115	-150507.728	-38960.981	569.878176	534.071598
			3970.503021	4344.019743
			平均値=	373.516722
			標準値=	186.758361

1 LOT

元NO.	X	Y	(X-X ₀)(Y _{N-1} -Y ₀)	(X _{N-1} -X ₀)(Y-Y ₀)
X ₀ ,Y ₀ =	-150500.000	-38900.000		
115	-150507.728	-38960.981		
102	-150522.421	-38960.022	1367.255001	463.850016
118	-150522.822	-38966.030	1369.822084	1480.458630
117	-150508.219	-38967.064	542.700570	1530.534608
115	-150507.728	-38960.981	518.270592	501.202839
			3798.048247	3976.046093
			平均値=	177.997846
			標準値=	88.998923

変更後の資料なし

2 LOT

元NO.	X	Y	(X-X ₀)(Y _{N-1} -Y ₀)	(X _{N-1} -X ₀)(Y-Y ₀)
X ₀ ,Y ₀ =	-150500.000	-38900.000		
117	-150508.219	-38967.064		
118	-150522.822	-38966.030	1530.534608	542.700570
120	-150522.895	-38967.133	1511.756850	1532.109326
119	-150508.308	-38968.165	557.740964	1560.637675
117	-150508.219	-38967.064	560.248135	557.167712
			4160.280557	4192.615283
			平均値=	32.334726
			標準値=	16.167363

変更後の資料なし

3 LOT

元NO.	X	Y	(X-X ₀)(Y _{N-1} -Y ₀)	(X _{N-1} -X ₀)(Y-Y ₀)
X ₀ ,Y ₀ =	-150500.000	-38900.000		
119	-150508.308	-38968.165		

120	-150522.895	-38967.133	1560.637675	557.740964
19	-150523.267	-38972.715	1561.983511	1664.809925
73	-150508.758	-38973.742	636.837970	1715.755114
119	-150508.308	-38968.165	612.648536	596.989070
			4372.107692	4535.295073
			ハイ/セキ=	163.187381
			ノセキ=	81.593691

変更後の資料なし

シウケイ ヒヨウ

186.758361

1 LOT

88.998923

2 LOT

16.167363

3 LOT

81.593691

ゴウケイ

186.759977

0.000000