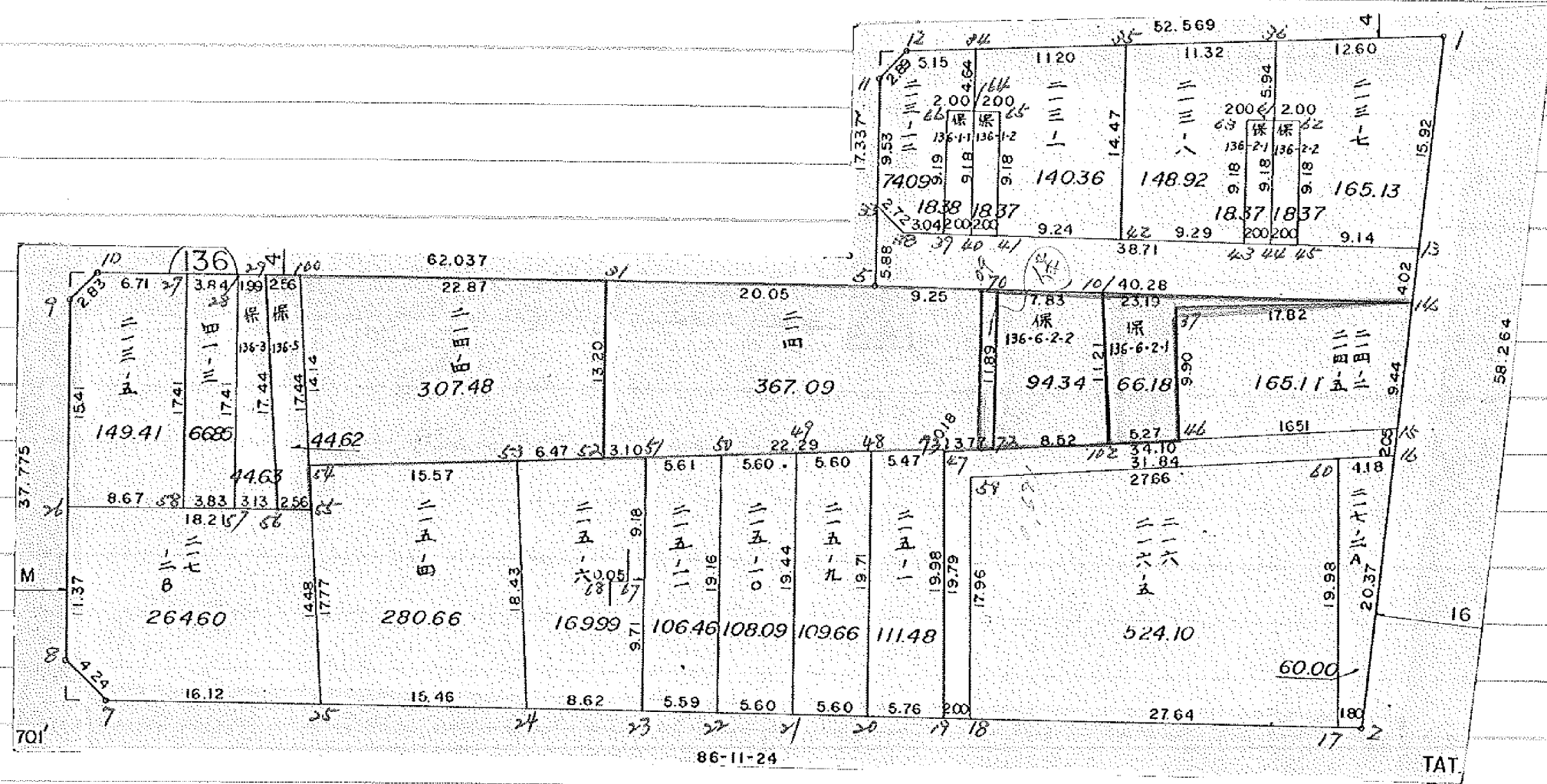


画地確定計算書

BLOCK NO.136

確定以後変更

環境計画準備の肝要
保留地変更 556.12
保留地変更計算 558.1



* * * * * KAKUHITSU MENSEKI KESAN-SHO * * * * *

BLOCK . LOT	KAKUHITSU MENSEKI	SUMIKIRI.SUIRO MENSEKI
136 BLOCK	3910.898695	
1 LOT	165.113235	
3 LOT	60.009641	
4 LOT	524.102205	
5 LOT	111.488451	
6 LOT	109.663224	
7 LOT	108.096286	
8 LOT	106.466785	
9 LOT	169.993657	
10 LOT	280.661437	
11 LOT	264.600815	
12 LOT	149.419270	
13 LOT	66.856617	
14 LOT	44.632156	
15 LOT	44.592999	
16 LOT	307.524143	
17 LOT	367.099133	
18 LOT	94.113729	
19 LOT	66.422506	
20 LOT	165.138776	
21 LOT	18.377288	
22 LOT	18.371904	
23 LOT	148.920602	
24 LOT	140.360723	
25 LOT	18.372175	
26 LOT	18.384692	
27 LOT	74.093394	
ツウロ 1	164.011861	
ツウロ 2	103.976456	
3 入三ヶリ		4.498825
4 入三ヶリ		2.000386
6 入三ヶリ		1.996579
TOTAL =	3910.864160	8.495790

136 BLOCK

TENMEI	X	Y	(X-X0)*(YN-1-Y0)	(XN-1-X0)*(Y-Y0)
X0.Y0	- 150400.000	- 38500.000		
OS136-1	- 150443.493	- 38554.871		
OS136-2	- 150495.287	- 38556.457	+ 5228.492977	+ 2455.484301
OS136-7	- 150501.549	- 38650.482	+ 5733.151893	+ 14338.978334
OS136-8	- 150498.755	- 38653.674	+ 14860.849910	+ 15605.441026
OS136-9	- 150472.023	- 38655.453	+ 11068.062502	+ 15351.761015
OS136-10	- 150469.886	- 38653.591	+ 10863.988358	+ 11062.084593
OS136-5	- 150465.793	- 38595.697	+ 10105.212663	+ 6687.880542
OS136-11	- 150450.400	- 38596.732	+ 4823.128800	+ 6364.288476
OS136-12	- 150448.173	- 38594.880	+ 4659.870636	+ 4781.952000
OS136-1	- 150443.493	- 38554.871	+ 4126.615840	+ 2643.300683
			+ 71469.373579	+ 79291.170969
		BAI MENSEKI =	7821.797390	
		MENSEKI =	3910.898695	

~~1 LOT~~

TENMEI	X	Y	(X-X0)*(YN-1-Y0)	(XN-1-X0)*(Y-Y0)
X0.Y0	- 150400.000	- 38500.000		
OS136-14	- 150463.423	- 38555.481		
OS136-15	- 150472.865	- 38555.770	+ 4042.623065	+ 3537.100710
OS136-46	- 150475.185	- 38572.125	+ 4193.067450	+ 5255.388125
OS136-37	- 150465.344	- 38573.203	+ 4712.936000	+ 5503.767555
OS136-14	- 150463.423	- 38555.481	+ 4642.753869	+ 3625.350464
			+ 17591.380384	+ 17921.606854
		BAI MENSEKI =	330.226470	
		MENSEKI =	165.113235	

3 LOT

TENMEI	X	Y	(X-X0)*(YN-1-Y0)	(XN-1-X0)*(Y-Y0)
X0.Y0	- 150400.000	- 38500.000		
OS136-16	- 150474.919	- 38555.833		
OS136-2	- 150495.287	- 38556.457	+ 5320.159071	+ 4229.701983
OS136-17	- 150495.407	- 38558.258	+ 5386.392999	+ 5551.230046
OS136-60	- 150475.500	- 38559.973	+ 4398.479000	+ 5721.844011
OS136-16	- 150474.919	- 38555.833	+ 4493.117187	+ 4215.391500
			+ 19598.148257	+ 19718.167540
		BAI MENSEKI =	120.019283	
		MENSEKI =	60.009641	

4 LOT

TENMEI	X	Y	(X-X0)*(YN-1-Y0)	(XN-1-X0)*(Y-Y0)
X0.Y0	- 150400.000	- 38500.000		
OS136-17	- 150495.407	- 38558.258		
OS136-18	- 150497.244	- 38585.840	+ 5665.240952	+ 8189.736880

***** MENSEKI KEISAN *****

TENMEI	X	Y	(X-X0)*(YN-1-Y0)	(XN-1-X0)*(Y-Y0)
OS136-59	- 150479.345	- 38587.357	+ 6810.974800	+ 8494.944108
OS136-60	- 150475.500	- 38559.973	+ 6595.453500	+ 4758.557685
OS136-17	- 150495.407	- 38558.258	+ 5721.844011	+ 4398.479000
			+ 24793.513263	+ 25841.717673
		BAI MENSEKI =	1048.204410	
		MENSEKI =	524.102205	

5 LOT

TENMEI	X	Y	(X-X0)*(YN-1-Y0)	(XN-1-X0)*(Y-Y0)
X0.Y0	- 150400.000	- 38500.000		
OS136-19	- 150497.377	- 38587.836		
OS136-20	- 150497.760	- 38593.591	+ 8586.847360	+ 9113.610807
OS136-48	- 150478.097	- 38594.984	+ 7309.176327	+ 9285.635840
OS136-73	- 150477.468	- 38589.549	+ 7358.220512	+ 6993.508253
OS136-47	- 150477.654	- 38589.533	+ 6953.838046	+ 6935.942444
OS136-19	- 150497.377	- 38587.836	+ 8718.454941	+ 6820.816744
			+ 38926.537186	+ 39149.514088
		BAI MENSEKI =	222.976902	
		MENSEKI =	111.488451	

6 LOT

TENMEI	X	Y	(X-X0)*(YN-1-Y0)	(XN-1-X0)*(Y-Y0)
X0.Y0	- 150400.000	- 38500.000		
OS136-20	- 150497.760	- 38593.591		
OS136-21	- 150498.132	- 38599.181	+ 9184.272012	+ 9695.934560
OS136-49	- 150478.741	- 38600.554	+ 7809.611121	+ 9867.565128
OS136-48	- 150478.097	- 38594.984	+ 7852.965738	+ 7479.135144
OS136-20	- 150497.760	- 38593.591	+ 9285.635840	+ 7309.176327
			+ 34132.484711	+ 34351.811159
		BAI MENSEKI =	219.326448	
		MENSEKI =	109.663224	

7 LOT

TENMEI	X	Y	(X-X0)*(YN-1-Y0)	(XN-1-X0)*(Y-Y0)
X0.Y0	- 150400.000	- 38500.000		
OS136-21	- 150498.132	- 38599.181		
OS136-22	- 150498.504	- 38604.770	+ 9769.725224	+ 10281.289640
OS136-50	- 150479.385	- 38606.121	+ 8317.166450	+ 10453.342984
OS136-49	- 150478.741	- 38600.554	+ 8356.073661	+ 7982.479290
OS136-21	- 150498.132	- 38599.181	+ 9867.565128	+ 7809.611121
			+ 36310.530463	+ 36526.723035
		BAI MENSEKI =	216.192572	
		MENSEKI =	108.096286	

* * * * * M E N S E K I K E I S A N * * * * *

8 LOT

TENMEI	X	Y	(X-X0)*(YN-1-Y0)	(XN-1-X0)*(Y-Y0)
X0.Y0	- 150400.000	- 38600.000		
OS136-22	- 150498.504	- 38604.770		
OS136-23	- 150498.876	- 38610.355	+ 471.638520	+ 1020.008920
OS136-68	- 150489.191	- 38611.058	+ 923.572805	+ 1093.370808
OS136-67	- 150489.193	- 38611.002	+ 986.296194	+ 981.279382
OS136-51	- 150480.030	- 38611.693	+ 880.490060	+ 1042.933749
OS136-50	- 150479.385	- 38606.121	+ 928.248805	+ 489.863630
OS136-22	- 150498.504	- 38604.770	+ 602.942984	+ 378.666450
			+ 4793.189368	+ 5006.122939
		BAI MENSEKI =	212.933571	
		MENSEKI =	106.466785	

9 LOT

TENMEI	X	Y	(X-X0)*(YN-1-Y0)	(XN-1-X0)*(Y-Y0)
X0.Y0	- 150400.000	- 38600.000		
OS136-23	- 150498.876	- 38610.355		
OS136-24	- 150499.449	- 38618.963	+ 1029.794395	+ 1874.985588
OS136-53	- 150481.155	- 38621.212	+ 1538.942265	+ 2109.512188
OS136-52	- 150480.384	- 38614.779	+ 1705.105408	+ 1199.389745
OS136-51	- 150480.030	- 38611.693	+ 1182.763370	+ 939.930112
OS136-67	- 150489.193	- 38611.002	+ 1042.933749	+ 880.490060
OS136-68	- 150489.191	- 38611.058	+ 981.279382	+ 986.296194
OS136-23	- 150498.876	- 38610.355	+ 1093.370808	+ 923.572805
			+ 8574.189377	+ 8914.176692
		BAI MENSEKI =	339.987315	
		MENSEKI =	169.993657	

10 LOT

TENMEI	X	Y	(X-X0)*(YN-1-Y0)	(XN-1-X0)*(Y-Y0)
X0.Y0	- 150400.000	- 38600.000		
OS136-24	- 150499.449	- 38618.963		
OS136-25	- 150500.476	- 38634.392	+ 1905.326388	+ 3420.250008
OS136-55	- 150486.114	- 38636.265	+ 2961.632688	+ 3643.762140
OS136-54	- 150482.848	- 38636.691	+ 3004.482720	+ 3159.608774
OS136-53	- 150481.155	- 38621.212	+ 2977.658105	+ 1757.371776
OS136-24	- 150499.449	- 38618.963	+ 2109.512188	+ 1538.942265
			+ 12958.612089	+ 13519.934963
		BAI MENSEKI =	561.322874	
		MENSEKI =	280.661437	

11 LOT

TENMEI	X	Y	(X-X0)*(YN-1-Y0)	(XN-1-X0)*(Y-Y0)
X0.Y0	- 150400.000	- 38600.000		
OS136-25	- 150500.476	- 38634.392		
OS136-7	- 150501.549	- 38650.482	+ 3492.473208	+ 5072.229432
OS136-8	- 150498.755	- 38653.674	+ 4985.349910	+ 5450.541026
OS136-26	- 150487.406	- 38654.429	+ 4691.429644	+ 5375.135895
OS136-58	- 150486.790	- 38645.773	+ 4723.892910	+ 4000.834838
OS136-57	- 150486.519	- 38641.949	+ 3960.234187	+ 3640.753710
OS136-56	- 150486.296	- 38638.821	+ 3620.030904	+ 3358.754099
OS136-55	- 150486.114	- 38636.265	+ 3343.031594	+ 3129.524440
OS136-25	- 150500.476	- 38634.392	+ 3643.762140	+ 2961.632688
			+ 32460.204497	+ 32989.406128
	BAI MENSEKI =		529.201631	
	MENSEKI =		264.600815	変更後の資料なし

12 LOT

TENMEI	X	Y	(X-X0)*(YN-1-Y0)	(XN-1-X0)*(Y-Y0)
X0.Y0	- 150400.000	- 38600.000		
OS136-26	- 150487.406	- 38654.429		
OS136-9	- 150472.023	- 38655.453	+ 3920.139867	+ 4846.924918
OS136-10	- 150469.886	- 38653.591	+ 3875.388358	+ 3859.784593
OS136-27	- 150469.413	- 38646.896	+ 3719.912083	+ 3277.373856
OS136-58	- 150486.790	- 38645.773	+ 4070.103840	+ 3177.241249
OS136-26	- 150487.406	- 38654.429	+ 4000.834838	+ 4723.892910
			+ 19586.378986	+ 19885.217526
	BAI MENSEKI =		298.838540	
	MENSEKI =		149.419270	

13 LOT

TENMEI	X	Y	(X-X0)*(YN-1-Y0)	(XN-1-X0)*(Y-Y0)
X0.Y0	- 150400.000	- 38600.000		
OS136-27	- 150469.413	- 38646.896		
OS136-28	- 150469.142	- 38643.060	+ 3242.483232	+ 2988.923780
OS136-57	- 150486.519	- 38641.949	+ 3725.508140	+ 2900.437758
OS136-58	- 150486.790	- 38645.773	+ 3640.753710	+ 3960.234187
OS136-27	- 150469.413	- 38646.896	+ 3177.241249	+ 4070.103840
			+ 13785.986331	+ 13919.699565
	BAI MENSEKI =		133.713234	
	MENSEKI =		66.856617	

14 LOT

TENMEI	X	Y	(X-X0)*(YN-1-Y0)	(XN-1-X0)*(Y-Y0)
X0.Y0	- 150400.000	- 38600.000		
OS136-28	- 150469.142	- 38643.060		
OS136-29	- 150469.002	- 38641.074	+ 2971.226120	+ 2839.938508

* * * * * M E N S E K I K E I S A N * * * * *

TENMEI	X	Y	(X-X0)*(YN-1-Y0)	(XN-1-X0)*(Y-Y0)
OS136-56	- 150486.296	- 38638.821	+ 3544.521904	+ 2678.726642
OS136-57	- 150486.519	- 38641.949	+ 3358.754099	+ 3620.030904
OS136-28	- 150469.142	- 38643.060	+ 2900.437758	+ 3725.508140
			+ 12774.939881	+ 12864.204194
		BAI MENSEKI =	89.264313	
		MENSEKI =	44.632156	

15 LOT

TENMEI	X	Y	(X-X0)*(YN-1-Y0)	(XN-1-X0)*(Y-Y0)
X0.Y0	- 150400.000	- 38600.000		
OS136-29	- 150469.002	- 38641.074		
OS136-30	- 150468.821	- 38638.520	+ 2826.753754	+ 2657.957040
OS136-54	- 150482.848	- 38636.691	+ 3191.304960	+ 2525.111311
OS136-55	- 150486.114	- 38636.265	+ 3159.608774	+ 3004.482720
OS136-56	- 150486.296	- 38638.821	+ 3129.524440	+ 3343.031594
OS136-29	- 150469.002	- 38641.074	+ 2678.726642	+ 3544.521904
			+ 14985.918570	+ 15075.104569
		BAI MENSEKI =	89.185999	
		MENSEKI =	44.592999	

16 LOT

TENMEI	X	Y	(X-X0)*(YN-1-Y0)	(XN-1-X0)*(Y-Y0)
X0.Y0	- 150400.000	- 38600.000		
OS136-30	- 150468.821	- 38638.520		
OS136-31	- 150467.208	- 38615.702	+ 2588.852160	+ 1080.627342
OS136-52	- 150480.384	- 38614.779	+ 1262.189568	+ 993.267032
OS136-53	- 150481.155	- 38621.212	+ 1199.389745	+ 1705.105408
OS136-54	- 150482.848	- 38636.691	+ 1757.371776	+ 2977.658105
OS136-30	- 150468.821	- 38638.520	+ 2525.111311	+ 3191.304960
			+ 9332.914560	+ 9947.962847
		BAI MENSEKI =	615.048287	
		MENSEKI =	307.524143	

17 LOT

TENMEI	X	Y	(X-X0)*(YN-1-Y0)	(XN-1-X0)*(Y-Y0)
X0.Y0	- 150400.000	- 38500.000		
OS136-31	- 150467.208	- 38615.702		
OS136-5	- 150465.793	- 38595.697	+ 7612.381686	+ 6431.603976
OS136-70	- 150465.249	- 38586.459	+ 6244.133553	+ 5688.396987
OS136-72	- 150477.123	- 38585.791	+ 6667.977457	+ 5597.776959
OS136-47	- 150477.654	- 38589.533	+ 6662.014314	+ 6905.053559
OS136-73	- 150477.468	- 38589.549	+ 6935.942444	+ 6953.838046

***** MENSEKI KEISAN *****

TENMEI	X	Y	(X-X0)*(YN-1-Y0)	(XN-1-X0)*(Y-Y0)
OS136-48	- 150478.097	- 38594.984	+ 6993.508253	+ 7358.220512
OS136-49	- 150478.741	- 38600.554	+ 7479.135144	+ 7852.965738
OS136-50	- 150479.385	- 38606.121	+ 7982.479290	+ 8356.073661
OS136-51	- 150480.030	- 38611.693	+ 8492.863630	+ 8866.748805
OS136-52	- 150480.384	- 38614.779	+ 8978.330112	+ 9185.763370
OS136-31	- 150467.208	- 38615.702	+ 7714.067032	+ 9300.589568
			+ 81762.832915	+ 82497.031181
		BAI MENSEKI =	734.198266	
		MENSEKI =	367.099133	

18 LOT

TENMEI	X	Y	(X-X0)*(YN-1-Y0)	(XN-1-X0)*(Y-Y0)
X0.Y0	- 150400.000	- 38500.000		
OS136-70	- 150465.249	- 38586.459		
OS136-69	- 150464.789	- 38578.661	+ 5601.592151	+ 5132.551589
OS136-71	- 150475.929	- 38577.372	+ 5972.651069	+ 5012.854508
OS136-72	- 150477.123	- 38585.791	+ 5967.160756	+ 6514.024839
OS136-70	- 150465.249	- 38586.459	+ 5597.776959	+ 6667.977457
			+ 23139.180935	+ 23327.408393
		BAI MENSEKI =	188.227458	
		MENSEKI =	94.113729	

19 LOT

TENMEI	X	Y	(X-X0)*(YN-1-Y0)	(XN-1-X0)*(Y-Y0)
X0.Y0	- 150400.000	- 38500.000		
OS136-69	- 150464.789	- 38578.661		
OS136-14	- 150463.423	- 38555.481	+ 4988.916603	+ 3594.558509
OS136-37	- 150465.344	- 38573.203	+ 3625.350464	+ 4642.753869
OS136-46	- 150475.185	- 38572.125	+ 5503.767555	+ 4712.936000
OS136-71	- 150475.929	- 38577.372	+ 5476.379125	+ 5817.213820
OS136-69	- 150464.789	- 38578.661	+ 5012.854508	+ 5972.651069
			+ 24607.268255	+ 24740.113267
		BAI MENSEKI =	132.845012	
		MENSEKI =	66.422506	

20 LOT

TENMEI	X	Y	(X-X0)*(YN-1-Y0)	(XN-1-X0)*(Y-Y0)
X0.Y0	- 150400.000	- 38500.000		
OS136-1	- 150443.493	- 38554.871		
OS136-13	- 150459.405	- 38555.358	+ 3259.611755	+ 2407.685494
OS136-45	- 150459.942	- 38564.485	+ 3318.269236	+ 3830.731425
OS136-62	- 150450.769	- 38565.035	+ 3273.838965	+ 3898.327970

* * * * * M E N S E K I K E I S A N * * * * *

TENMEI	X	Y	(X-X0)*(YN-1-Y0)	(XN-1-X0)*(Y-Y0)
OS136-61	- 150450.889	- 38567.031	+ 3309.566115	+ 3403.096839
OS136-36	- 150444.956	- 38567.386	+ 3013.445636	+ 3429.206154
OS136-1	- 150443.493	- 38554.871	+ 2930.819298	+ 2466.780676
			+ 19105.551005	+ 19435.828558
		BAI MENSEKI =	330.277553	
		MENSEKI =	165.138776	

21 LOT

TENMEI	X	Y	(X-X0)*(YN-1-Y0)	(XN-1-X0)*(Y-Y0)
X0.Y0	- 150400.000	- 38500.000		
OS136-45	- 150459.942	- 38564.485		
OS136-44	- 150460.060	- 38566.482	+ 3872.969100	+ 3985.064044
OS136-61	- 150450.889	- 38567.031	+ 3383.202498	+ 4025.881860
OS136-62	- 150450.769	- 38565.035	+ 3403.096839	+ 3309.566115
OS136-45	- 150459.942	- 38564.485	+ 3898.327970	+ 3273.838965
			+ 14557.596407	+ 14594.350984
		BAI MENSEKI =	36.754577	
		MENSEKI =	18.377288	

22 LOT

TENMEI	X	Y	(X-X0)*(YN-1-Y0)	(XN-1-X0)*(Y-Y0)
X0.Y0	- 150400.000	- 38500.000		
OS136-44	- 150460.060	- 38566.482		
OS136-43	- 150460.177	- 38568.479	+ 4000.687314	+ 4112.848740
OS136-63	- 150451.009	- 38569.027	+ 3493.045311	+ 4153.837779
OS136-61	- 150450.889	- 38567.031	+ 3512.715003	+ 3419.184279
OS136-44	- 150460.060	- 38566.482	+ 4025.881860	+ 3383.202498
			+ 15032.329488	+ 15069.073296
		BAI MENSEKI =	36.743808	
		MENSEKI =	18.371904	

23 LOT

TENMEI	X	Y	(X-X0)*(YN-1-Y0)	(XN-1-X0)*(Y-Y0)
X0.Y0	- 150400.000	- 38500.000		
OS136-35	- 150446.272	- 38578.637		
OS136-36	- 150444.956	- 38567.386	+ 3535.204972	+ 3118.084992
OS136-61	- 150450.889	- 38567.031	+ 3429.206154	+ 3013.445636
OS136-63	- 150451.009	- 38569.027	+ 3419.184279	+ 3512.715003
OS136-43	- 150460.177	- 38568.479	+ 4153.837779	+ 3493.045311
OS136-42	- 150460.722	- 38577.754	+ 4158.181838	+ 4679.002458
OS136-35	- 150446.272	- 38578.637	+ 3597.833088	+ 4774.995914
			+ 22293.448110	+ 22591.289314
		BAI MENSEKI =	297.841204	
		MENSEKI =	148.920602	

* * * * * M E N S E K I K E I S A N * * * * *

24 LOT

TENMEI	X	Y	(X-X0)*(YN-1-Y0)	(XN-1-X0)*(Y-Y0)
X0.Y0	- 150400.000	- 38500.000		
OS136-34	- 150447.574	- 38589.762		
OS136-35	- 150446.272	- 38578.637	+ 4153.467264	+ 3741.076638
OS136-42	- 150460.722	- 38577.754	+ 4774.995914	+ 3597.833088
OS136-41	- 150461.266	- 38586.984	+ 4763.676564	+ 5281.842448
OS136-65	- 150452.098	- 38587.503	+ 4531.692482	+ 5360.958798
OS136-64	- 150452.211	- 38589.500	+ 4568.619133	+ 4662.771000
OS136-34	- 150447.574	- 38589.762	+ 4257.873000	+ 4686.563782
			+ 27050.324307	+ 27331.045754
		BAI MENSEKI =	280.721447	
		MENSEKI =	140.360723	

25 LOT

TENMEI	X	Y	(X-X0)*(YN-1-Y0)	(XN-1-X0)*(Y-Y0)
X0.Y0	- 150400.000	- 38500.000		
OS136-41	- 150461.266	- 38586.984		
OS136-40	- 150461.383	- 38588.981	+ 5339.338872	+ 5451.509946
OS136-64	- 150452.211	- 38589.500	+ 4645.786991	+ 5493.778500
OS136-65	- 150452.098	- 38587.503	+ 4662.771000	+ 4568.619133
OS136-41	- 150461.266	- 38586.984	+ 5360.958798	+ 4531.692432
			+ 20008.855661	+ 20045.600011
		BAI MENSEKI =	36.744350	
		MENSEKI =	18.372175	

26 LOT

TENMEI	X	Y	(X-X0)*(YN-1-Y0)	(XN-1-X0)*(Y-Y0)
X0.Y0	- 150400.000	- 38500.000		
OS136-40	- 150461.383	- 38588.981		
OS136-39	- 150461.500	- 38590.979	+ 5472.331500	+ 5584.563957
OS136-66	- 150452.324	- 38591.497	+ 4760.385196	+ 5627.065500
OS136-64	- 150452.211	- 38589.500	+ 4777.149867	+ 4682.998000
OS136-40	- 150461.383	- 38588.981	+ 5493.778500	+ 4645.786991
			+ 20503.645063	+ 20540.414448
		BAI MENSEKI =	36.769385	
		MENSEKI =	18.384692	

27 LOT

TENMEI	X	Y	(X-X0)*(YN-1-Y0)	(XN-1-X0)*(Y-Y0)
X0.Y0	- 150400.000	- 38500.000		
OS136-11	- 150450.400	- 38596.732		
OS136-12	- 150448.173	- 38594.880	+ 4659.870636	+ 4781.952000

* * * * * M E N S E K I K E I S A N * * * * *

TENMEI	X	Y	(X-X0)*(YN-1-Y0)	(XN-1-X0)*(Y-Y0)
OS136-34	- 150447.574	- 38589.762	+ 4513.821120	+ 4324.104826
OS136-64	- 150452.211	- 38589.500	+ 4686.563782	+ 4257.873000
OS136-66	- 150452.324	- 38591.497	+ 4682.998000	+ 4777.149867
OS136-39	- 150461.500	- 38590.979	+ 5627.065500	+ 4760.385196
OS136-38	- 150461.678	- 38594.014	+ 5611.402762	+ 5781.861000
OS136-33	- 150459.918	- 38596.092	+ 5633.130852	+ 5926.762376
OS136-11	- 150450.400	- 38596.732	+ 4843.036800	+ 5795.987976
			+ 40257.889452	+ 40406.076241
		BAI MENSEKI =	148.186789	
		MENSEKI =	74.093394	

ツウロ 1

TENMEI	X	Y	(X-X0)*(YN-1-Y0)	(XN-1-X0)*(Y-Y0)
X0.Y0	- 150400.000	- 38500.000		
OS136-13	- 150459.405	- 38555.358		
OS136-14	- 150463.423	- 38555.481	+ 3510.970434	+ 3295.848805
OS136-69	- 150464.789	- 38578.661	+ 3594.558509	+ 4988.916603
OS136-70	- 150465.249	- 38586.459	+ 5132.551589	+ 5601.592151
OS136-5	- 150465.793	- 38595.697	+ 5688.396987	+ 6244.133553
OS136-32	- 150461.793	- 38595.966	+ 5913.404721	+ 6313.891038
OS136-33	- 150459.918	- 38596.092	+ 5750.090788	+ 5937.812956
OS136-38	- 150461.678	- 38594.014	+ 5926.762376	+ 5633.130852
OS136-39	- 150461.500	- 38590.979	+ 5781.861000	+ 5611.402762
OS136-40	- 150461.383	- 38588.981	+ 5584.563957	+ 5472.331500
OS136-41	- 150461.266	- 38586.984	+ 5451.509946	+ 5339.338872
OS136-42	- 150460.722	- 38577.754	+ 5281.842448	+ 4763.676564
OS136-43	- 150460.177	- 38568.479	+ 4679.002458	+ 4158.181838
OS136-44	- 150460.060	- 38566.482	+ 4112.848740	+ 4000.687314
OS136-45	- 150459.942	- 38564.485	+ 3985.064044	+ 3872.969100
OS136-13	- 150459.405	- 38555.358	+ 3830.731425	+ 3318.269236
			+ 74224.159421	+ 74552.183144
		BAI MENSEKI =	328.023723	
		MENSEKI =	164.011861	

ツウロ 2

TENMEI	X	Y	(X-X0)*(YN-1-Y0)	(XN-1-X0)*(Y-Y0)
X0.Y0	- 150400.000	- 38500.000		
OS136-15	- 150472.865	- 38555.770		
OS136-16	- 150474.919	- 38555.833	+ 4178.232630	+ 4068.271545
OS136-60	- 150475.500	- 38559.973	+ 4215.391500	+ 4493.117187
OS136-59	- 150479.345	- 38587.357	+ 4758.557685	+ 6595.453500
OS136-18	- 150497.244	- 38585.840	+ 8494.944108	+ 6810.974800
OS136-19	- 150497.377	- 38587.836	+ 8358.841680	+ 8541.523984
OS136-47	- 150477.654	- 38589.533	+ 6820.816744	+ 8718.454941

* * * * * M E N S E K I K E I S A N * * * * *

TENMEI	X	Y	(X-X0)*(YN-1-Y0)	(XN-1-X0)*(Y-Y0)
OS136-72	- 150477.123	- 38585.791	+ 6905.053559	+ 6662.014314
OS136-71	- 150475.929	- 38577.372	+ 6514.024839	+ 5967.160756
OS136-46	- 150475.185	- 38572.125	+ 5817.213820	+ 5476.379125
OS136-15	- 150472.865	- 38555.770	+ 5255.388125	+ 4193.067450
			+ 61318.464690	+ 61526.417602
		BAI MENSEKI =	207.952912	
		MENSEKI =	103.976456	

3 入三キリ

TENMEI	X	Y	(X-X0)*(YN-1-Y0)	(XN-1-X0)*(Y-Y0)
X0.Y0	- 150400.000	- 38600.000		
OS136-3	- 150501.748	- 38653.475		
OS136-7	- 150501.549	- 38650.482	+ 5430.332775	+ 5136.442536
OS136-8	- 150498.755	- 38653.674	+ 4985.349910	+ 5450.541026
OS136-3	- 150501.748	- 38653.475	+ 5461.222152	+ 5280.923625
			+ 15876.904837	+ 15867.907187
		BAI MENSEKI =	8.997650	
		MENSEKI =	4.498825	

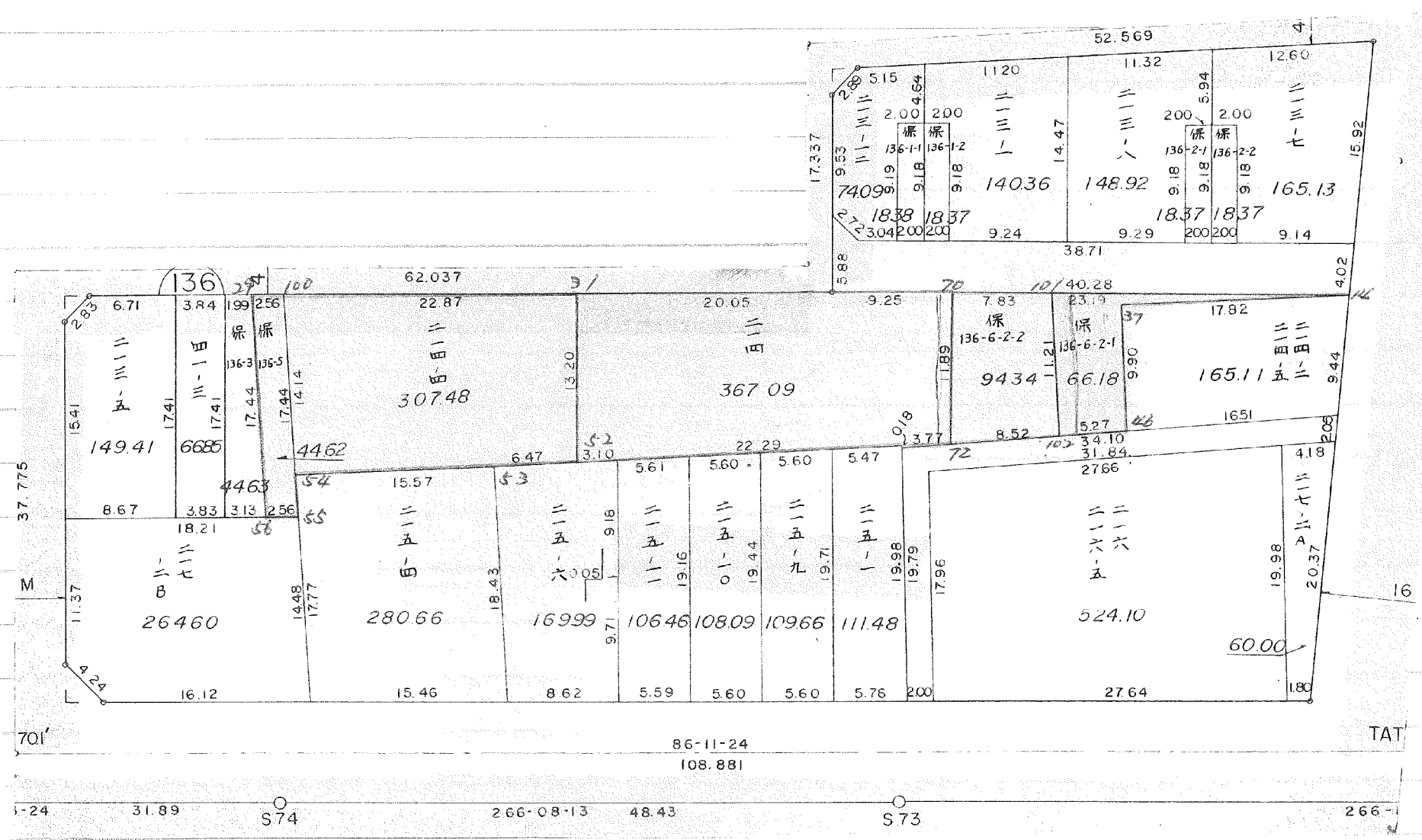
4 入三キリ

TENMEI	X	Y	(X-X0)*(YN-1-Y0)	(XN-1-X0)*(Y-Y0)
X0.Y0	- 150400.000	- 38600.000		
OS136-4	- 150470.027	- 38655.586		
OS136-9	- 150472.023	- 38655.453	+ 4003.470478	+ 3883.207231
OS136-10	- 150469.886	- 38653.591	+ 3875.388358	+ 3859.784593
OS136-4	- 150470.027	- 38655.586	+ 3752.816957	+ 3884.683196
			+ 11631.675793	+ 11627.675020
		BAI MENSEKI =	4.000773	
		MENSEKI =	2.000386	

6 入三キリ

TENMEI	X	Y	(X-X0)*(YN-1-Y0)	(XN-1-X0)*(Y-Y0)
X0.Y0	- 150400.000	- 38500.000		
OS136-6	- 150448.405	- 38596.866		
OS136-11	- 150450.400	- 38596.732	+ 4882.046400	+ 4682.312460
OS136-12	- 150448.173	- 38594.880	+ 4659.870636	+ 4781.952000
OS136-6	- 150448.405	- 38596.866	+ 4592.666400	+ 4666.325818
			+ 14134.583436	+ 14130.590278
		BAI MENSEKI =	3.993158	
		MENSEKI =	1.996579	

確定以後変更
換地計画準備の時変更



37.775
M
701
15.41
283
6.71
3.84
1.99
2.56
100
62.037
22.87
20.05
9.25
7.83
23.9
17.337
5.88
9.53
5.15
2.0
0.464
200
1120
11.32
12.60
15.92
7409
9.18
9.18
136-1-1
136-1-2
14.47
14036
148.92
9.18
9.18
200
5.94
200
200
136-2-1
136-2-2
18.37
18.37
165.13
9.14
18.38
18.37
3.04
200
200
9.24
3871
9.29
200
200
4.02
58.264
16
TAT
40.28
70
10
40.28
17.82
165.11
1651
9.44
9.44
9.44
9.44
9.44
11.89
0.8
3.77
8.52
5.27
4.6
34.10
31.84
2766
16.12
14.48
17.77
14.14
17.44
17.44
17.44
17.41
17.41
17.41
136-3
136-5
14.48
17.77
54
15.57
53
6.47
5.2
3.10
22.29
5.61
5.60
5.60
5.47
19.98
19.79
17.96
19.98
20.37
4.18
1.80
86-11-24
108.881
1.24
31.89
S74
266-08-13
48.43
S73
266

15 LOT

元NO. X ₀ Y ₀	X	Y	(X-X ₀) (Y _{N-1} -Y ₀)	(X _{N-1} -X ₀) (Y-Y ₀)
29	-150469.002	-38641.074		
100	-150468.821	-38638.515	2826.753754	2657.612030
54	-150482.848	-38636.691	3190.890720	2525.111311
55	-150486.114	-38636.265	3159.608774	3004.482720
56	-150486.296	-38638.821	3129.524440	3343.031594
29	-150469.002	-38641.074	2678.726642	3544.521904
			14985.504330	15074.759559
			Δイメジキ=	89.255229
			Δセキ=	44.627614

~~16 LOT~~

元NO. X ₀ Y ₀	X	Y	(X-X ₀) (Y _{N-1} -Y ₀)	(X _{N-1} -X ₀) (Y-Y ₀)
100	-150468.821	-38638.515		
31	-150467.208	-38615.702	2588.516120	1080.627342
52	-150480.384	-38614.779	1262.189568	993.267032
53	-150481.155	-38621.212	1199.389745	1705.105408
54	-150482.848	-38636.691	1757.371776	2977.658105
100	-150468.821	-38638.515	2525.111311	3190.890720
			9332.578520	9947.548607
			Δイメジキ=	614.970087
			Δセキ=	307.485043

18 LOT

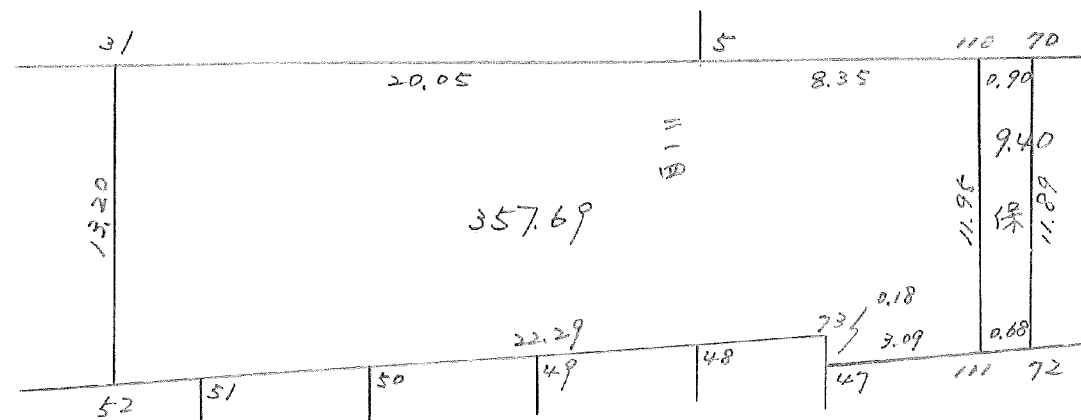
デ/NO. X ₀ Y ₀	X	Y	(X-X ₀)(Y _{N-1} -Y ₀)	(X _{N-1} -X ₀)(Y-Y ₀)
70	-150465.249	-38586.459		
101	-150464.788	-38578.640	5601.505692	5131.181360
102	-150475.926	-38577.351	5970.820640	5011.416588
72	-150477.123	-38585.791	5965.541173	6513.767466
70	-150465.249	-38586.459	5597.776959	6667.977457
			23135.644464	23324.342871
			平均イ/メ/セキ=	188.698407
			メ/セキ=	94.349203

19 LOT

デ/NO. X ₀ Y ₀	X	Y	(X-X ₀)(Y _{N-1} -Y ₀)	(X _{N-1} -X ₀)(Y-Y ₀)
101	-150464.788	-38578.640		
14	-150463.423	-38555.481	4987.584720	3594.503028
37	-150465.344	-38573.203	3625.350464	4642.753869
46	-150475.185	-38572.125	5503.767555	4712.936000
102	-150475.926	-38577.351	5476.162750	5815.634935
101	-150464.788	-38578.640	5011.416588	5970.820640
			24604.282077	24735.648472
			平均イ/メ/セキ=	132.366395
			メ/セキ=	66.183197

板野川

BN0.136



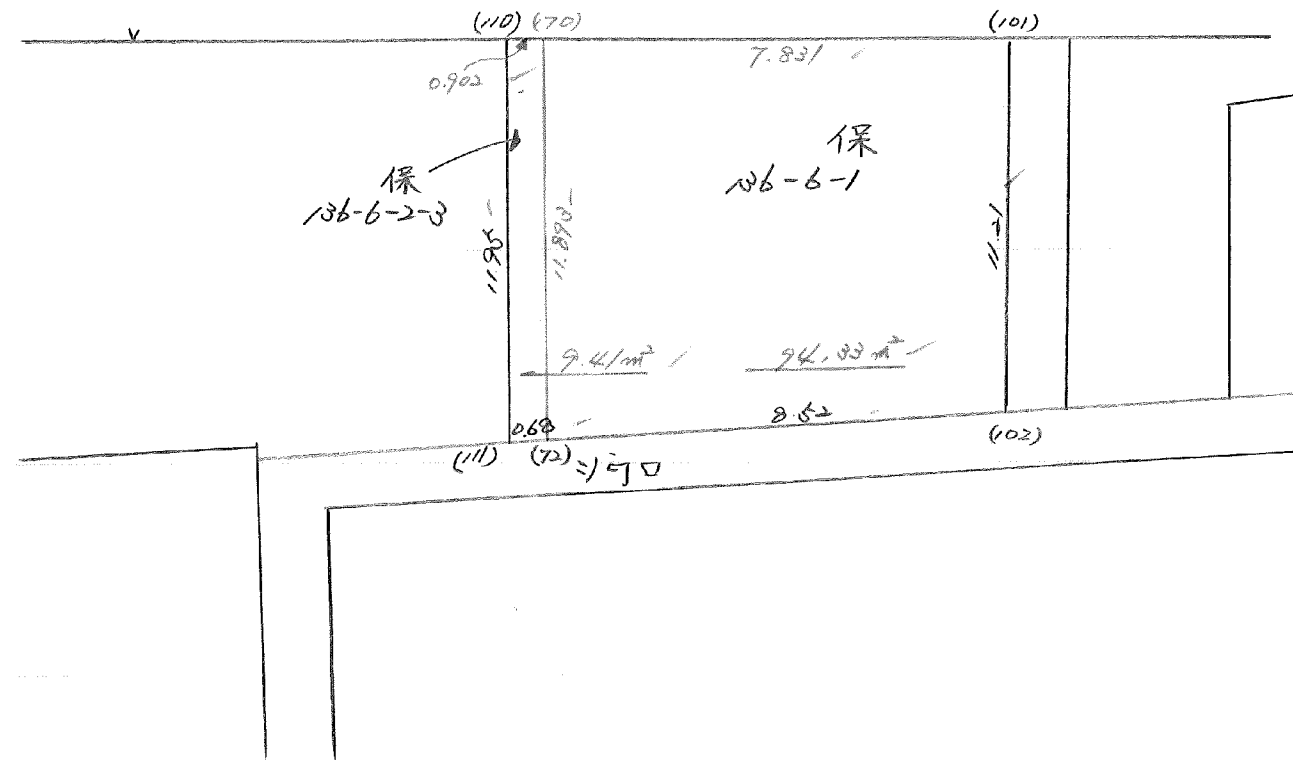
17 LOT

元NO. X _o Y _o	X	Y	(X-X _o)(YN-1-Y _o)	(XN-1-X _o)(Y-Y _o)
31	-150467.208	-38615.702		
5	-150465.793	-38595.697	7612.381686	6431.603976
110	-150465.302	-38587.357	6249.205494	5747.479101
111	-150477.219	-38586.465	6745.620183	5646.337430
47	-150477.654	-38589.533	6714.353110	6913.648727
73	-150477.468	-38589.549	6935.942444	6953.838046
48	-150478.097	-38594.984	7479.135144	7358.220512
49	-150478.741	-38600.554	7982.479290	7852.965738
50	-150479.385	-38606.121	8492.863630	8356.073661
51	-150480.030	-38611.693	8978.330112	8866.748805
52	-150480.384	-38614.779	7714.067032	9185.763370
31	-150467.208	-38615.702		9300.589568
			81897.886378	82613.268934
			平均値=	715.382556
			標準値=	357.691278

~~17-1 LOT~~

元NO. X _o Y _o	X	Y	(X-X _o)(YN-1-Y _o)	(XN-1-X _o)(Y-Y _o)
110	-150465.302	-38587.357		
70	-150465.249	-38586.459	5699.956893	5645.945618
72	-150477.123	-38585.791	6667.977457	5597.776959
111	-150477.219	-38586.465	6624.695229	6668.440195
110	-150465.302	-38587.357	5646.337430	6745.620183
			24638.967009	24657.782955
			平均値=	18.815946
			標準値=	9.407973

106 BLOCK



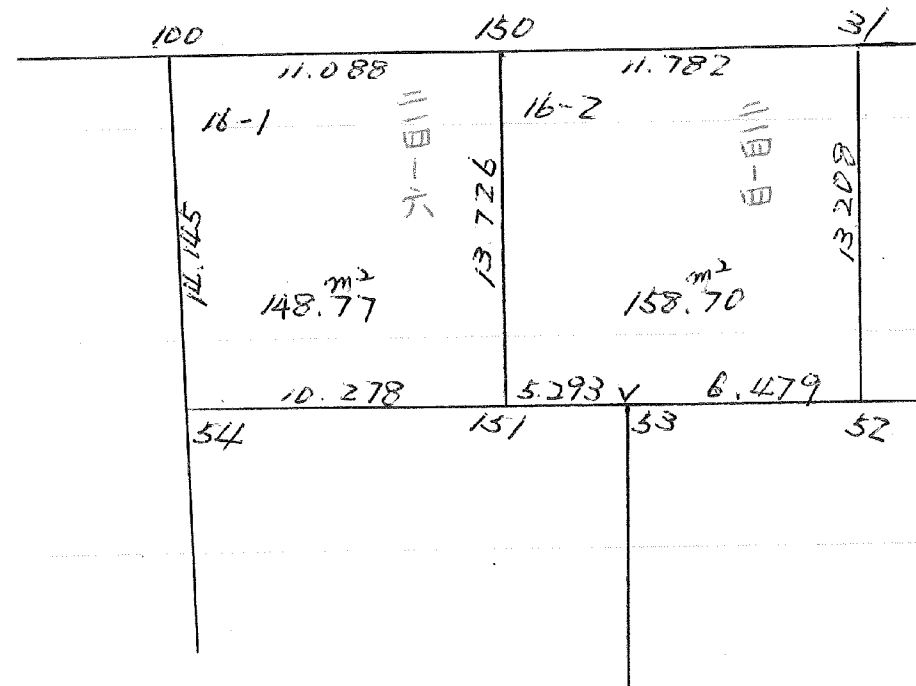
(株)136-6-2-3 LOT

元NO. X _o Y _o	X	Y	(X-X _o)(YN-1-Y _o)	(XN-1-X _o)(Y-Y _o)
110	-150400.000	-38500.000		
110	-150465.302	-38587.357		
170	-150465.249	-38586.457	5699.956893	5645.815014
72	-150477.123	-38585.791	6667.823211	5597.776959
111	-150477.219	-38586.465	6624.695229	6668.440195
110	-150465.302	-38587.357	5646.337430	6745.620183
			24638.812763	24657.652351
			平均値=	18.839588
			分散=	9.419794

(株)136-6-2-2 LOT

元NO. X _o Y _o	X	Y	(X-X _o)(YN-1-Y _o)	(XN-1-X _o)(Y-Y _o)
170	-150400.000	-38500.000		
170	-150465.249	-38586.457		
101	-150464.788	-38578.640	5601.376116	5131.181360
102	-150475.926	-38577.351	5970.820640	5011.416588
72	-150477.123	-38585.791	5965.541173	6513.767466
170	-150465.249	-38586.457	5597.776959	6667.823211
			23135.514888	23324.188625
			平均値=	188.673737
			分散=	94.336868

136



16-1 LOT

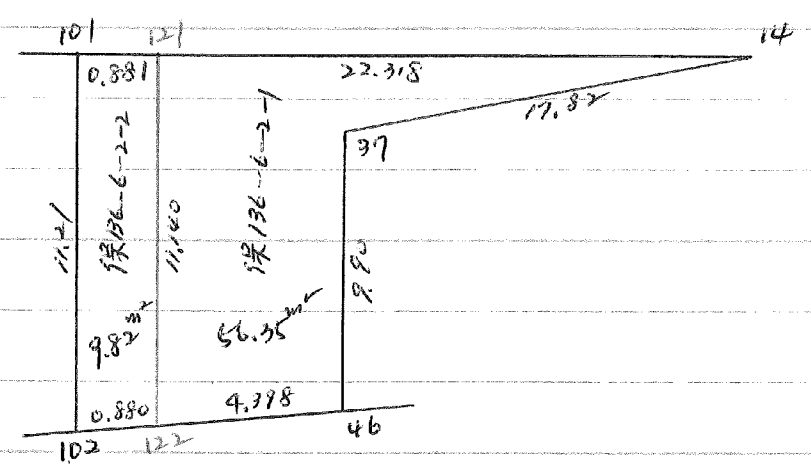
テリNO. X ₀ Y ₀	X	Y	(X-X ₀)(YN-1-Y ₀)	(XN-1-X ₀)(Y-Y ₀)
150	-150400.000	-38600.000		
151	-150468.039	-38627.455	2243.897150	1801.264486
54	-150481.730	-38626.474	2193.317952	2998.755430
100	-150482.848	-38636.691	2525.111311	3190.890720
150	-150468.821	-38638.515	2620.522085	1889.480555
	-150468.039	-38627.455	9582.848498	9880.391191
			∑イ/∑セキ=	297.542693
			∑セキ=	148.771346

16-2 LOT

テリNO. X ₀ Y ₀	X	Y	(X-X ₀)(YN-1-Y ₀)	(XN-1-X ₀)(Y-Y ₀)
31	-150400.000	-38600.000		
52	-150467.208	-38615.702	1262.189568	993.267032
53	-150480.384	-38614.779	1199.389745	1705.105408
151	-150481.155	-38621.212	1733.656760	2148.497470
150	-150481.730	-38626.474	1801.264486	2243.897150
31	-150468.039	-38627.455	1845.195640	1068.348378
	-150467.208	-38615.702	7841.696199	8159.115438
			∑イ/∑セキ=	317.419239
			∑セキ=	158.709619

NR 55.17

BNO. 136



19-1 LOT

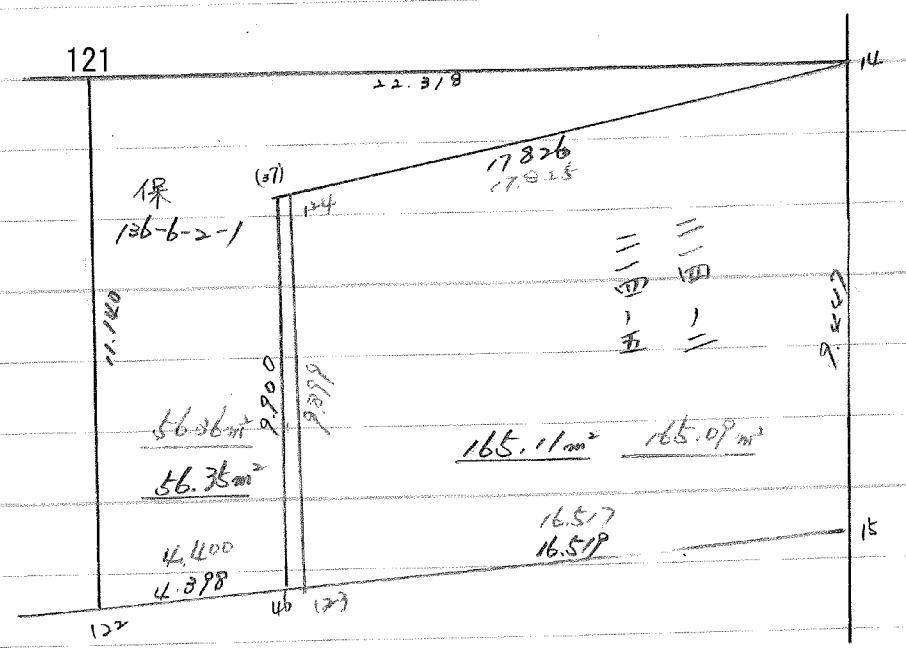
元NO. X _o Y _o	X	Y	(X-X _o)(YN-1-Y _o)	(XN-1-X _o)(Y-Y _o)
	-150400.000	-38500.000		
101	-150464.788	-38578.640		
121	-150464.736	-38577.761	5090.839040	5037.979668
122	-150475.802	-38576.480	5894.439322	4951.009280
102	-150475.926	-38577.351	5806.820480	5863.360502
101	-150464.788	-38578.640	5011.416588	5970.820640
			21803.515430	21823.170090
			平均偏差=	19.654660
			分散=	9.827330

~~19-2 LOT~~

元NO. X _o Y _o	X	Y	(X-X _o)(YN-1-Y _o)	(XN-1-X _o)(Y-Y _o)
	-150400.000	-38500.000		
121	-150464.736	-38577.761		
14	-150463.423	-38555.481	4931.835903	3591.618016
37	-150465.344	-38573.203	3625.350464	4642.753869
46	-150475.185	-38572.125	5503.767555	4712.936000
122	-150475.802	-38576.480	5467.219250	5750.148800
121	-150464.736	-38577.761	4951.009280	5894.439322
			24479.182452	24591.896007
			平均偏差=	112.713555
			分散=	56.356777

2018.1.7 変更

136 BLOCK 区画



1 LOT

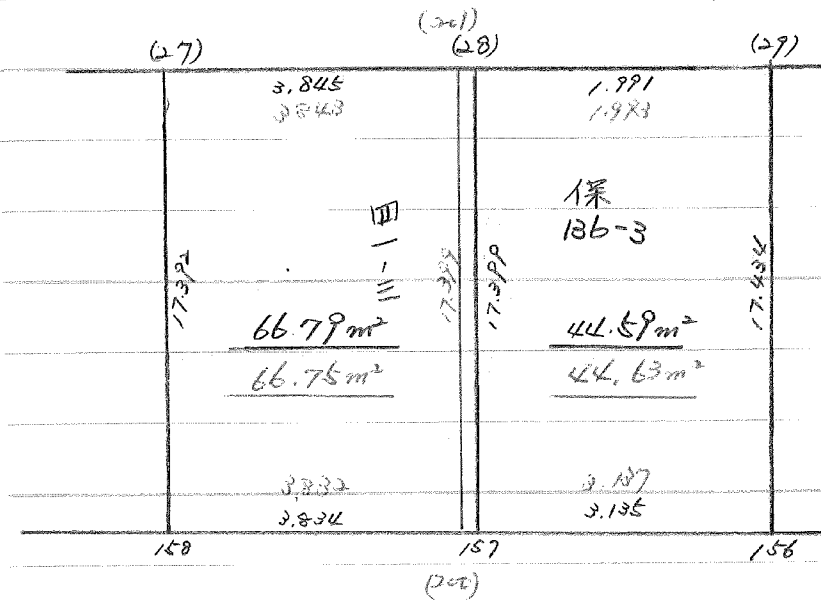
元NO.	X	Y	(X-X ₀)(Y _{N-1} -Y ₀)	(X _{N-1} -X ₀)(Y-Y ₀)
X ₀ Y ₀	-150400.000	-38500.000		
14	-150463.423	-38555.481		
15	-150472.865	-38555.770	4042.623065	3537.100710
123	-150475.184	-38572.124	4193.011680	5255.315260
124	-150465.344	-38573.202	4712.870656	5503.619168
14	-150463.423	-38555.481	4642.690446	3625.350464
			17591.195847	17921.385602
			イノセキ=	330.189755
			ノセキ=	165.094877

19-2 LOT

元NO.	X	Y	(X-X ₀)(Y _{N-1} -Y ₀)	(X _{N-1} -X ₀)(Y-Y ₀)
X ₀ Y ₀	-150400.000	-38500.000		
14	-150463.423	-38555.481		
124	-150465.344	-38573.202	3625.350464	4642.690446
123	-150475.184	-38572.124	5503.619168	4712.870656
122	-150475.802	-38576.480	5467.143448	5750.072320
121	-150464.736	-38577.761	4951.009280	5894.439322
14	-150463.423	-38555.481	4931.835903	3591.618016
			24478.958263	24591.690760
			イノセキ=	112.732497
			ノセキ=	56.366248

058.1.7

B6 Block 202



13 LOT

元NO. X ₀ Y ₀	X	Y	(X-X ₀) (Y _{N-1} -Y ₀)	(X _{N-1} -X ₀) (Y-Y ₀)
27	-150469.413	-38646.896		
201	-150469.143	-38643.062	3242.530128	2989.062606
200	-150486.506	-38641.952	3725.121372	2900.687136
158	-150486.769	-38645.775	3640.133088	3959.812150
27	-150469.413	-38646.896	3177.380075	4069.119024
			13785.164663	13918.680916
			平均値=	133.516253
			標準値=	66.758126

14 LOT

元NO. X ₀ Y ₀	X	Y	(X-X ₀) (Y _{N-1} -Y ₀)	(X _{N-1} -X ₀) (Y-Y ₀)
201	-150469.143	-38643.062		
29	-150469.002	-38641.074	2971.364124	2839.979582
156	-150486.290	-38638.822	3544.275460	2678.795644
200	-150486.506	-38641.952	3358.335932	3620.038080
201	-150469.143	-38643.062	2900.687136	3725.121372
			12774.662652	12863.934678
			平均値=	89.272026
			標準値=	44.636013