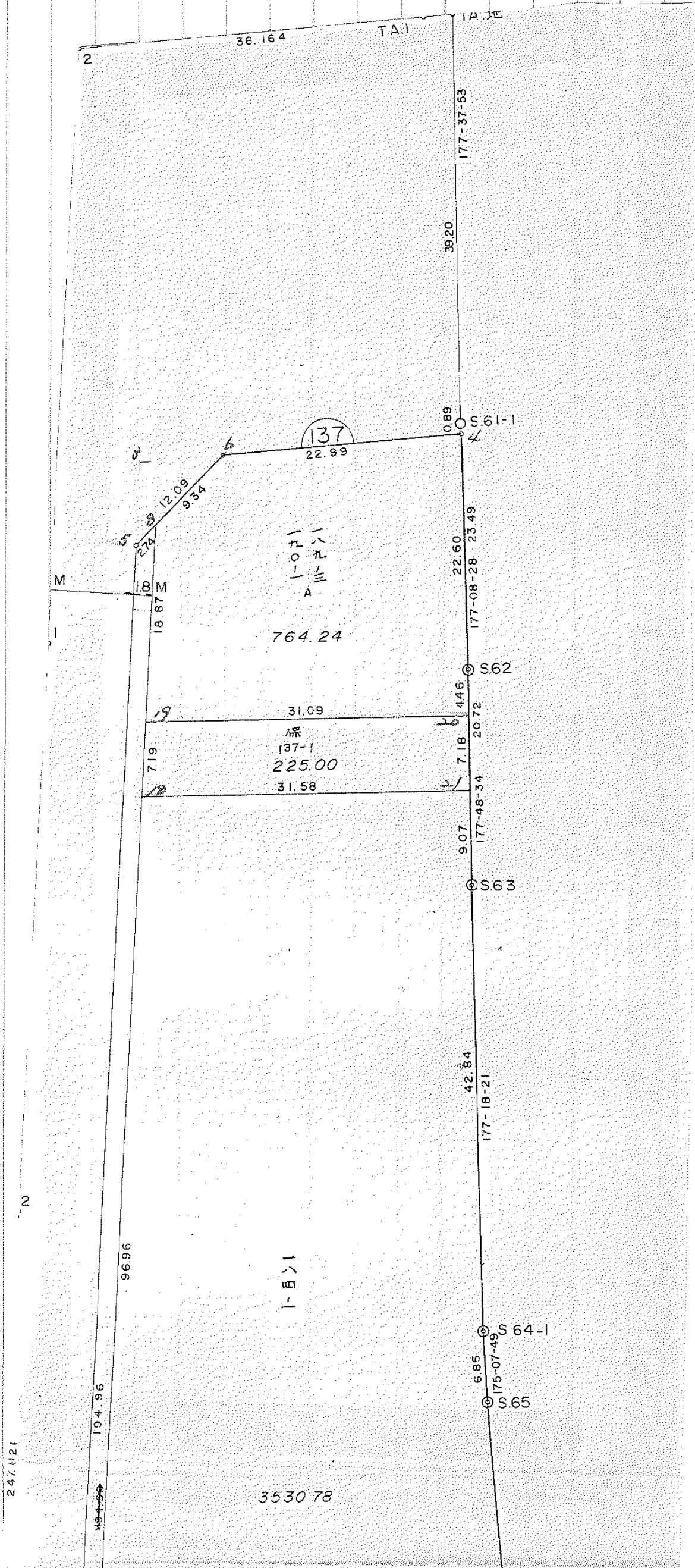


画地確定計算書

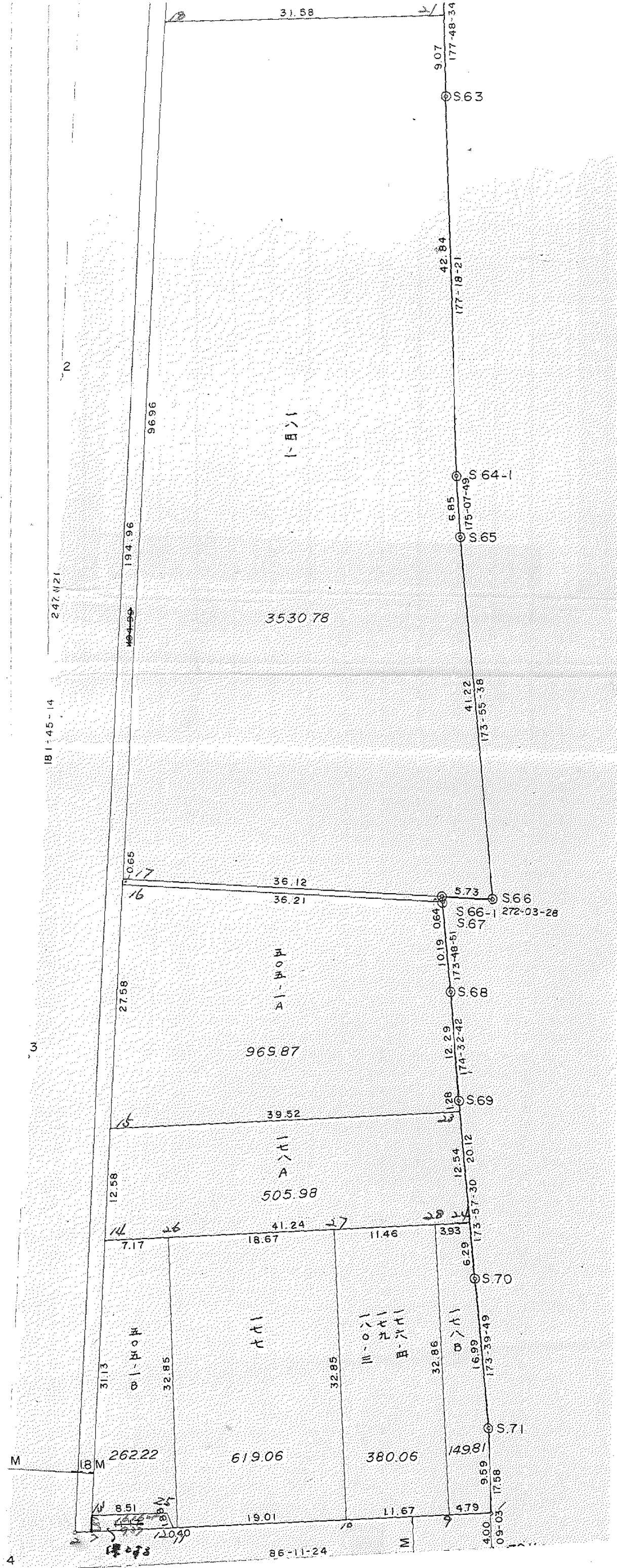
BLOCK NO. 137



保留地變更 058.1

水路の一部保留地です。

N 56.13



水路部保留地

保留地変更 568.1

2.56.2.13

BLOCK . LOT	KAKUHITSU MENSEKI	SUMIKIRI .SUIRO MENSEKI
137 BLOCK	<del>7799.021547</del> 7798.932773/	
1 LOT	764.242812	
2 LOT	225.009898	
3 LOT	3530.785972	
5 LOT	969.875873	
6 LOT	505.980083	
7 LOT	149.818265	
8 LOT	380.063182	
9 LOT	619.061871	
10 LOT	262.221558	
入10	352.507411	
入10	23.227190	
入10 係留此	16.168233	
3 入三判		31.674585
TOTAL =	7798.962348	31.674585

137 BLOCK

TENMEI	X	Y	(X-X0)*(YN-1-Y0)	(XN-1-X0)*(Y-Y0)
X0.Y0	- 150200.000	- 38400.000		
OSS71	- 150481.506	- 38493.923		
OS137-1	- 150491.089	- 38493.446	+ 27339.952147	+ 26305.609676
OS137-2	- 150494.217	- 38540.416	+ 27493.401782	+ 40873.553024
OS137-5	- 150299.348	- 38534.450	+ 13950.048768	+ 39557.475650
OS137-6	- 150290.458	- 38526.255	+ 12162.078100	+ 12543.181740
OS137-4	- 150287.888	- 38503.405	+ 11096.299440	+ 9353.809490
<del>OSS61-1</del>	<del>- 150286.996</del>	<del>- 38503.442</del>	<del>+ 8995.821380</del>	<del>+ 9091.310496</del>
OSS62	- 150310.464	- 38502.270	+ 11426.617088	+ 8897.080920
OSS63	- 150331.169	- 38501.478	+ 13414.653630	+ 11209.665792
OSS64-1	- 150373.967	- 38499.464	+ 17653.823226	+ 13046.593416
OSS65	- 150380.798	- 38498.882	+ 17982.892272	+ 17202.204894
OSS66	- 150421.789	- 38494.521	+ 21930.939898	+ 17089.207758
OSS66-1	- 150421.583	- 38500.254	+ 20944.246743	+ 22235.234406
OSS67	- 150422.220	- 38500.185	+ 22278.443880	+ 22199.292855
OSS68	- 150432.360	- 38499.086	+ 23278.986600	+ 22018.890920
OSS69	- 150444.601	- 38497.917	+ 24236.534686	+ 22751.994120
OSS70	- 150464.612	- 38495.799	+ 25910.013204	+ 23432.531199
OSS71	- 150481.506	- 38493.923	+ 26967.993294	+ 24853.152876

+327062.746126      +342660.789222  
 BAI MENSEKI = ~~45598.043096~~      15597.865986 /  
 MENSEKI = ~~7799.021947~~      7798.922990 /

1 LOT

TENMEI	X	Y	(X-X0)*(YN-1-Y0)	(XN-1-X0)*(Y-Y0)
X0.Y0	- 150200.000	- 38500.000		
OS137-19	- 150316.192	- 38533.166		
OS137-8	- 150297.327	- 38532.588	+ 3227.947282	+ 3786.464896
OS137-6	- 150290.458	- 38526.255	+ 2947.845304	+ 2555.320385
OS137-4	- 150287.888	- 38503.405	+ 2307.499440	+ 308.009490
OSS62	- 150310.464	- 38502.270	+ 376.129920	+ 199.505760
OS137-20	- 150314.922	- 38502.099	+ 260.872940	+ 231.863936
OS137-19	- 150316.192	- 38533.166	+ 243.887008	+ 3811.503052

+ 9364.181894      + 10892.667519  
 BAI MENSEKI = 1528.485625  
 MENSEKI = 764.242812

2 LOT

TENMEI	X	Y	(X-X0)*(YN-1-Y0)	(XN-1-X0)*(Y-Y0)
X0.Y0	- 150300.000	- 38500.000		
OS137-18	- 150323.383	- 38533.386		
OS137-19	- 150316.192	- 38533.166	+ 540.586112	+ 775.520578

\* \* \* \* \* M E N S E K I K E I S A N \* \* \* \* \*

TENMEI	X	Y	(X-X0)*(YN-1-Y0)	(XN-1-X0)*(Y-Y0)
OS137-20	- 150314.922	- 38502.099	+ 494.903052	+ 33.987008
OS137-21	- 150322.100	- 38501.825	+ 46.387900	+ 27.232650
OS137-18	- 150323.383	- 38533.386	+ 42.673975	+ 737.830600
			+ 1124.551039	+ 1574.570836
		BAI MENSEKI =	450.019797	
		MENSEKI =	225.009898	

3 LOT

TENMEI	X	Y	(X-X0)*(YN-1-Y0)	(XN-1-X0)*(Y-Y0)
X0.Y0	- 150300.000	- 38400.000		
OS137-17	- 150420.305	- 38536.353		
OS137-18	- 150323.383	- 38533.386	+ 3188.342199	+ 16047.002730
OS137-21	- 150322.100	- 38501.825	+ 2947.830600	+ 2380.973975
OSS63	- 150331.169	- 38501.478	+ 3173.783425	+ 2242.663800
OSS64-1	- 150373.967	- 38499.464	+ 7506.023226	+ 3100.193416
OSS65	- 150380.798	- 38498.882	+ 8036.492272	+ 7314.004894
OSS66	- 150421.789	- 38494.521	+ 12042.739898	+ 7637.107758
OSS66-1	- 150421.583	- 38500.254	+ 11492.146743	+ 12209.834406
OS137-17	- 150420.305	- 38536.353	+ 12061.057470	+ 16578.206799
			+ 60448.415833	+ 67509.987778
		BAI MENSEKI =	7061.571945	
		MENSEKI =	3530.785972	

5 LOT

TENMEI	X	Y	(X-X0)*(YN-1-Y0)	(XN-1-X0)*(Y-Y0)
X0.Y0	- 150400.000	- 38400.000		
OS137-15	- 150448.530	- 38537.217		
OS137-16	- 150420.955	- 38536.373	+ 2875.382235	+ 6618.181690
OSS67	- 150422.220	- 38500.185	+ 3030.208060	+ 2099.376675
OSS68	- 150432.360	- 38499.086	+ 3241.986600	+ 2201.690920
OSS69	- 150444.601	- 38497.917	+ 4419.334686	+ 3168.594120
OS137-23	- 150445.878	- 38497.782	+ 4492.236126	+ 4361.174982
OS137-15	- 150448.530	- 38537.217	+ 4745.360460	+ 6295.241526
			+ 22804.508167	+ 24744.259913
		BAI MENSEKI =	1939.751746	
		MENSEKI =	969.875873	

6 LOT

TENMEI	X	Y	(X-X0)*(YN-1-Y0)	(XN-1-X0)*(Y-Y0)
X0.Y0	- 150400.000	- 38400.000		
OS137-14	- 150461.112	- 38537.602		
OS137-15	- 150448.530	- 38537.217	+ 6677.825060	+ 8385.605304

\* \* \* \* \* M E N S E K I K E I S A N \* \* \* \* \*

TENMEI	X	Y	(X-X0)*(YN-1-Y0)	(XN-1-X0)*(Y-Y0)
OS137-23	- 150445.878	- 38497.782	+ 6295.241526	+ 4745.360460
OS137-24	- 150458.351	- 38496.462	+ 5705.677482	+ 4425.483636
OS137-28	- 150458.615	- 38500.387	+ 5654.120130	+ 5857.681837
OS137-27	- 150459.382	- 38511.819	+ 5961.180834	+ 6554.270685
OS137-26	- 150460.632	- 38530.446	+ 6779.809608	+ 7746.144372
OS137-14	- 150461.112	- 38537.602	+ 7971.815952	+ 8343.084464
			+ 45045.670592	+ 46057.630758
		BAI MENSEKI =	1011.960166	
		MENSEKI =	505.980083	

7 LOT

TENMEI	X	Y	(X-X0)*(YN-1-Y0)	(XN-1-X0)*(Y-Y0)
X0.Y0	- 150400.000	- 38400.000		
OS137-24	- 150458.351	- 38496.462		
OSS70	- 150464.612	- 38495.799	+ 6232.602744	+ 5589.967449
OSS71	- 150481.506	- 38493.923	+ 7808.193294	+ 6068.552876
OS137-1	- 150491.089	- 38493.446	+ 8555.352147	+ 7616.409676
OS137-9	- 150491.408	- 38498.231	+ 8541.711968	+ 8947.763559
OS137-28	- 150458.615	- 38500.387	+ 5757.810065	+ 9176.174896
OS137-24	- 150458.351	- 38496.462	+ 5857.681837	+ 5654.120130
			+ 42753.352055	+ 43052.988586
		BAI MENSEKI =	299.636531	
		MENSEKI =	149.818265	

8 LOT

TENMEI	X	Y	(X-X0)*(YN-1-Y0)	(XN-1-X0)*(Y-Y0)
X0.Y0	- 150400.000	- 38400.000		
OS137-9	- 150491.408	- 38498.231		
OS137-10	- 150492.184	- 38509.879	+ 9055.326504	+ 10043.819632
OS137-27	- 150459.382	- 38511.819	+ 6524.834778	+ 10307.922696
OS137-28	- 150458.615	- 38500.387	+ 6554.270685	+ 5961.180834
OS137-9	- 150491.408	- 38498.231	+ 9176.174896	+ 5757.810065
			+ 31310.606863	+ 32070.733227
		BAI MENSEKI =	760.126364	
		MENSEKI =	380.063182	

9 LOT

TENMEI	X	Y	(X-X0)*(YN-1-Y0)	(XN-1-X0)*(Y-Y0)
X0.Y0	- 150400.000	- 38500.000		
OS137-10	- 150492.184	- 38509.879		
OS137-11	- 150493.448	- 38528.854	+ 923.172792	+ 2659.877136
OS137-26	- 150460.632	- 38530.446	+ 1749.475728	+ 2845.117808

\* \* \* \* \* M E N S E K I K E I S A N \* \* \* \* \*

TENMEI	X	Y	(X-X0)*(YN-1-Y0)	(XN-1-X0)*(Y-Y0)
OS137-27	- 150459.382	- 38511.819	+ 1807.944372	+ 716.609608
OS137-10	- 150492.184	- 38509.879	+ 1089.522696	+ 586.634778
			+ 5570.115588	+ 6808.239330
		BAI MENSEKI =	1238.123742	
		MENSEKI =	619.061871	

10 LOT

TENMEI	X	Y	(X-X0)*(YN-1-Y0)	(XN-1-X0)*(Y-Y0)
X0.Y0	- 150400.000	- 38500.000		
OS137-11	- 150493.448	- 38528.854		
OS137-12	- 150493.475	- 38529.262	+ 2697.127650	+ 2734.475376
OS137-25	- 150491.766	- 38530.049	+ 2685.256692	+ 2808.830275
OS137-13	- 150492.228	- 38538.554	+ 2771.359172	+ 3537.946364
OS137-14	- 150461.112	- 38537.602	+ 2356.112048	+ 3467.957256
OS137-26	- 150460.632	- 38530.446	+ 2279.884464	+ 1860.615952
OS137-11	- 150493.448	- 38528.854	+ 2845.117808	+ 1749.475728
			+ 15634.857834	+ 16159.300951
		BAI MENSEKI =	524.443117	
		MENSEKI =	262.221558	

λ10

TENMEI	X	Y	(X-X0)*(YN-1-Y0)	(XN-1-X0)*(Y-Y0)
X0.Y0	- 150200.000	- 38500.000		
OS137-7	- 150494.097	- 38538.611		
OS137-2	- 150494.217	- 38540.416	+ 11360.012587	+ 11886.224352
OS137-5	- 150299.348	- 38534.450	+ 4015.248768	+ 10135.775650
OS137-8	- 150297.327	- 38532.588	+ 3352.915150	+ 3237.552624
OS137-19	- 150316.192	- 38533.166	+ 3786.464896	+ 3227.947282
OS137-18	- 150323.383	- 38533.386	+ 4092.120578	+ 3879.186112
OS137-17	- 150420.305	- 38536.353	+ 7355.102730	+ 4485.342199
OS137-16	- 150420.955	- 38536.373	+ 8032.377115	+ 8013.153765
OS137-15	- 150448.530	- 38537.217	+ 9039.781690	+ 8223.282235
OS137-14	- 150461.112	- 38537.602	+ 9717.805304	+ 9345.225060
OS137-13	- 150492.228	- 38538.554	+ 10988.357256	+ 10066.912048
OS137-7	- 150494.097	- 38538.611	+ 11338.615738	+ 11283.215308
			+ 83078.801812	+ 83783.816635
		BAI MENSEKI =	705.014823	
		MENSEKI =	352.507411	

λ10

TENMEI	X	Y	(X-X0)*(YN-1-Y0)	(XN-1-X0)*(Y-Y0)
X0.Y0	- 150400.000	- 38500.000		
OS137-16	- 150420.955	- 38536.373		
OS137-17	- 150420.305	- 38536.353	+ 738.553765	+ 761.777115



\* \* \* \* \* M E N S E K I K E I S A N \* \* \* \* \*

TENMEI	X	Y	(X-X0)*(YN-1-Y0)	(XN-1-X0)*(Y-Y0)
OSS66-1	- 150421.583	- 38500.254	+ 784.606799	+ 5.157470
OSS67	- 150422.220	- 38500.185	+ 5.643880	+ 3.992855
OS137-16	- 150420.955	- 38536.373	+ 3.876675	+ 808.208060
			+ 1532.681119	+ 1579.135500
		BAI MENSEKI =	46.454381	
		MENSEKI =	23.227190	

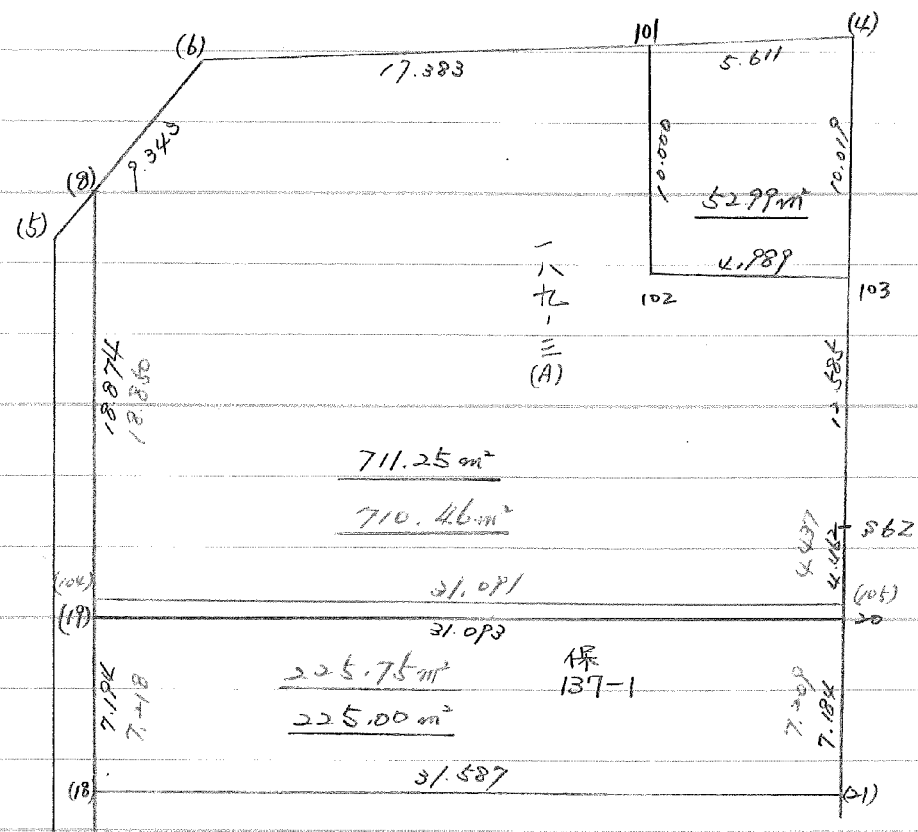
2 予約地

TENMEI	X	Y	(X-X0)*(YN-1-Y0)	(XN-1-X0)*(Y-Y0)
X0.Y0	- 150400.000	- 38500.000		
OS137-12	- 150493.475	- 38529.262		
OS137-7	- 150494.097	- 38538.611	+ 2753.466414	+ 3609.163225
OS137-13	- 150492.228	- 38538.554	+ 3561.015308	+ 3627.815738
OS137-25	- 150491.766	- 38530.049	+ 3537.946364	+ 2771.359172
OS137-12	- 150493.475	- 38529.262	+ 2808.830275	+ 2685.256692
			+ 12661.258361	+ 12693.594827
		BAI MENSEKI =	32.336466	
		MENSEKI =	16.168233	

3 予約地

TENMEI	X	Y	(X-X0)*(YN-1-Y0)	(XN-1-X0)*(Y-Y0)
X0.Y0	- 150200.000	- 38500.000		
OS137-3	- 150291.352	- 38534.205		
OS137-5	- 150299.348	- 38534.450	+ 3398.198340	+ 3147.076400
OS137-6	- 150290.458	- 38526.255	+ 3116.278100	+ 2608.381740
OS137-3	- 150291.352	- 38534.205	+ 2398.446760	+ 3094.115890
			+ 8912.923200	+ 8849.574030
		BAI MENSEKI =	63.349170	
		MENSEKI =	31.674585	

137 Block

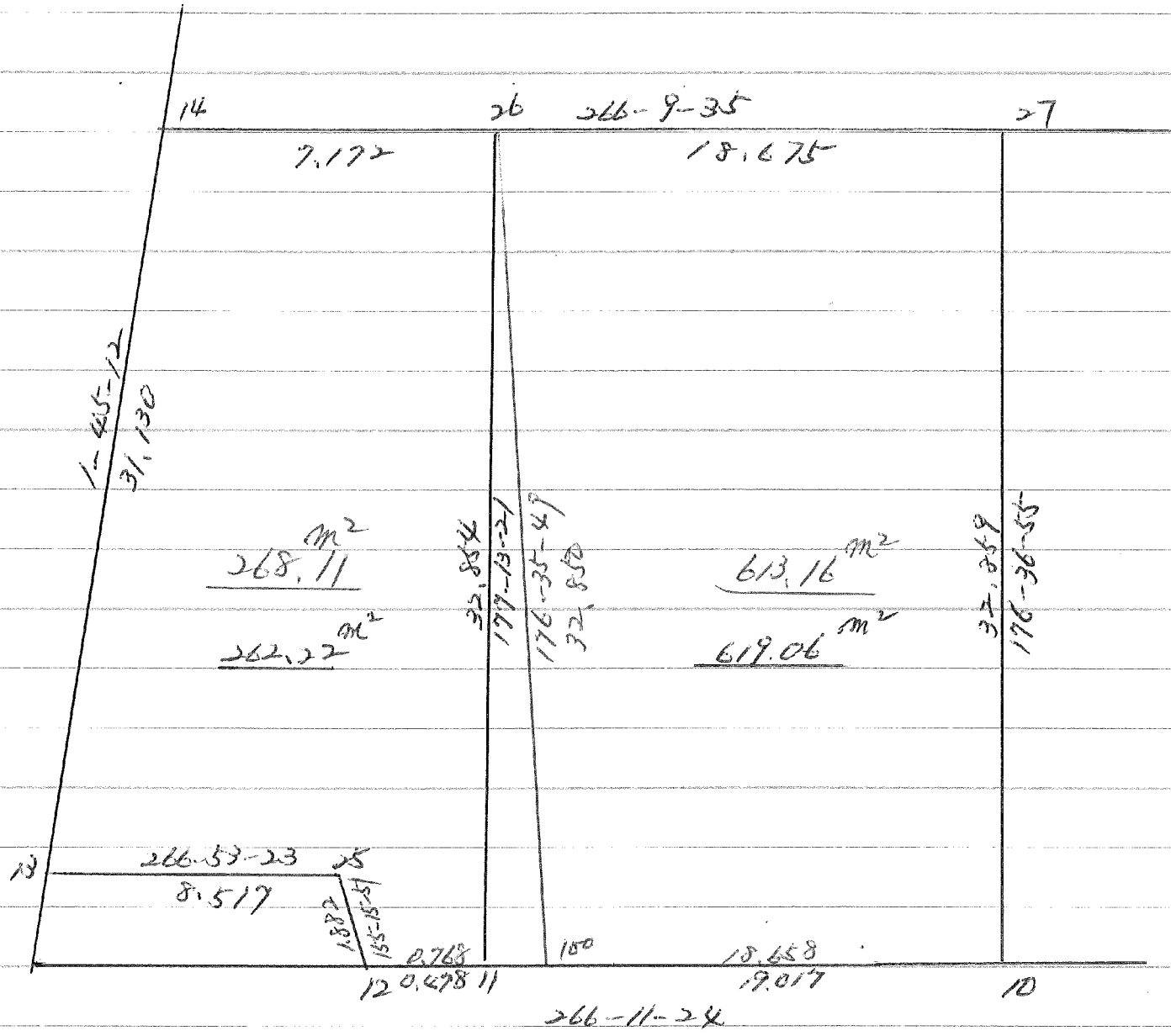


1-2 LOT

TONO.	X	Y	(X-X <sub>0</sub> )(Y <sub>N-1</sub> -Y <sub>0</sub> )	(X <sub>N-1</sub> -X <sub>0</sub> )(Y-Y <sub>0</sub> )
X <sub>0</sub> Y <sub>0</sub>	-150200.000	-38500.000		
101	-150288.515	-38508.981		
102	-150298.452	-38507.863	884.197412	695.993445
103	-150297.894	-38502.905	769.740522	286.003060
62	-150310.464	-38502.270	320.897920	222.219380
105	-150314.898	-38502.100	260.818460	231.974400
104	-150316.168	-38533.165	243.952800	3810.592170
8	-150297.327	-38532.588	3227.849955	3785.682784
6	-150290.458	-38526.255	2947.845304	2555.320385
101	-150288.515	-38508.981	2323.961325	812.403298
			10979.263698	12400.188922
			平均イノセキ=	1420.925224
			ズレセキ=	710.462612

2 LOT

TONO.	X	Y	(X-X <sub>0</sub> )(Y <sub>N-1</sub> -Y <sub>0</sub> )	(X <sub>N-1</sub> -X <sub>0</sub> )(Y-Y <sub>0</sub> )
X <sub>0</sub> Y <sub>0</sub>	-150300.000	-38500.000		
21	-150322.100	-38501.825		
18	-150323.383	-38533.386	42.673975	737.830600
104	-150316.168	-38533.165	539.784848	775.497195
105	-150314.898	-38502.100	494.092170	33.952800
21	-150322.100	-38501.825	46.410000	27.188850
			1122.960993	1574.469445
			平均イノセキ=	451.508452
			ズレセキ=	225.754226



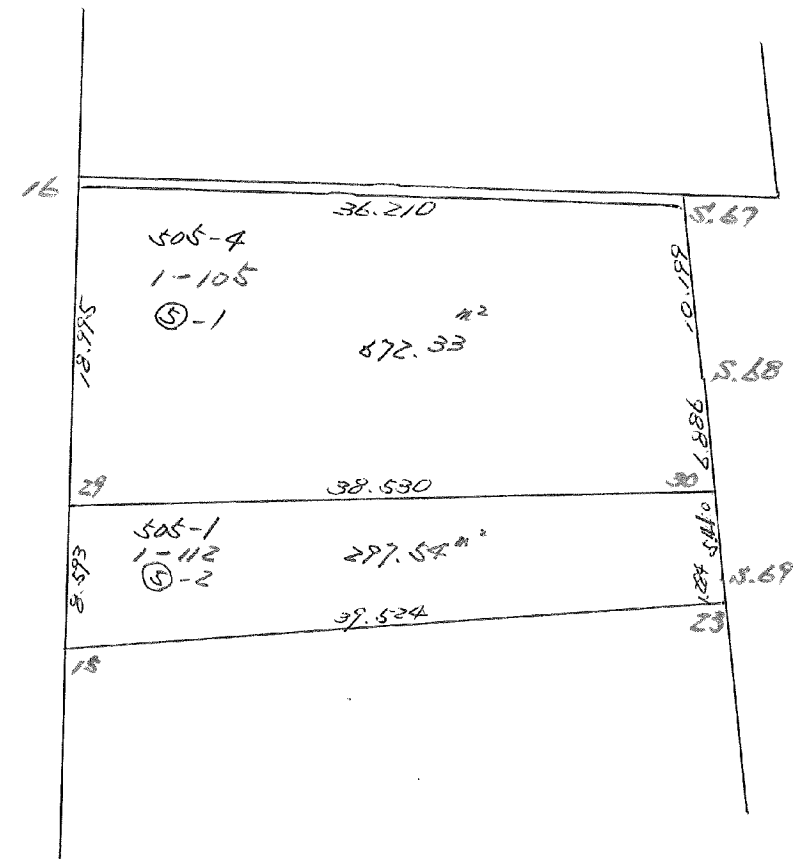
9 LOT

元NO. X <sub>0</sub> Y <sub>0</sub>	X	Y	(X-X <sub>0</sub> ) (YN-1-Y <sub>0</sub> )	(XN-1-X <sub>0</sub> ) (Y-Y <sub>0</sub> )
	-150400.000	-38500.000		
10	-150492.184	-38509.879		
100	-150493.424	-38528.496	922.935696	2626.875264
26	-150460.632	-38530.446	1727.769472	2844.387104
27	-150459.382	-38511.819	1807.944372	716.609608
10	-150492.184	-38509.879	1089.522696	586.634778
			5548.172236	6774.506754
			イマセキ=	1226.334518
			マセキ=	613.167259

10 LOT

元NO. X <sub>0</sub> Y <sub>0</sub>	X	Y	(X-X <sub>0</sub> ) (YN-1-Y <sub>0</sub> )	(XN-1-X <sub>0</sub> ) (Y-Y <sub>0</sub> )
	-150400.000	-38500.000		
100	-150493.424	-38528.496		
12	-150493.475	-38529.262	2663.663600	2733.773088
25	-150491.766	-38530.049	2685.256692	2808.830275
13	-150492.228	-38538.554	2771.359172	3537.946364
14	-150461.112	-38537.602	2356.112048	3467.957256
26	-150460.632	-38530.446	2279.884464	1860.615952
100	-150493.424	-38528.496	2844.387104	1727.769472
			15600.663080	16136.892407
			イマセキ=	536.229327
			マセキ=	268.114663

BNo. 137



MENSEKI KEISAN

T E N	137 BLOCK	5-1 LOT									NO 1	
	X	DX	DMD.1	Y	DY	DMD.2	ALHA	DIST	DX * DMD.2	DY * DMD.1		
16	-150420.955			-38536.373								
≒S.67	-150422.220	1.265	1.265	-38500.185	-36.188	-36.188	92-00-07	36.210	-45.7778	-45.7778		
≒S.68	-150432.360	10.140	12.670	-38499.086	-1.099	-73.475	173-48-51	10.199	-745.0365	-13.9243		
30	-150439.215	6.855	29.665	-38498.431	-0.655	-75.229	174-32-42	6.886	-515.6947	-19.4305		
29	-150439.941	0.726	37.246	-38536.954	38.523	-37.361	268-55-13	38.530	-27.1240	1434.8276		
16	-150420.955	-18.986	18.986	-38536.373	-0.581	0.581	1-45-11	18.995	-11.0308	-11.0308		
		18.986			38.523				0.0000	1434.8276		
		-18.986			-38.523				-1344.6640	-90.1635		
									1344.6640	1344.6640		
							MENSEKI	=	672.33			

T E N	137 BLOCK	5-2 LOT									NO 1	
	X	DX	DMD.1	Y	DY	DMD.2	ALHA	DIST	DX * DMD.2	DY * DMD.1		
29	-150439.941			-38536.954								
30	-150439.215	-0.726	-0.726	-38498.431	-38.523	-38.523	88-55-13	38.530	27.9676	27.9676		
≒S.69	-150444.601	5.386	3.934	-38497.917	-0.514	-77.560	174-32-42	5.410	-417.7381	-2.0220		
≒ 23	-150445.878	1.277	10.597	-38497.782	-0.135	-78.209	173-57-55	1.284	-99.8728	-1.4305		
≒ 15	-150448.530	2.652	14.526	-38537.217	39.435	-38.909	266-09-10	39.524	-103.1866	572.8328		
29	-150439.941	-8.589	8.589	-38536.954	-0.263	0.263	1-45-11	8.593	-2.2589	-2.2589		
		9.315			39.435				27.9676	600.8005		
		-9.315			-39.435				-623.0566	-5.7115		
									595.0889	595.0889		
							MENSEKI	=	297.54			