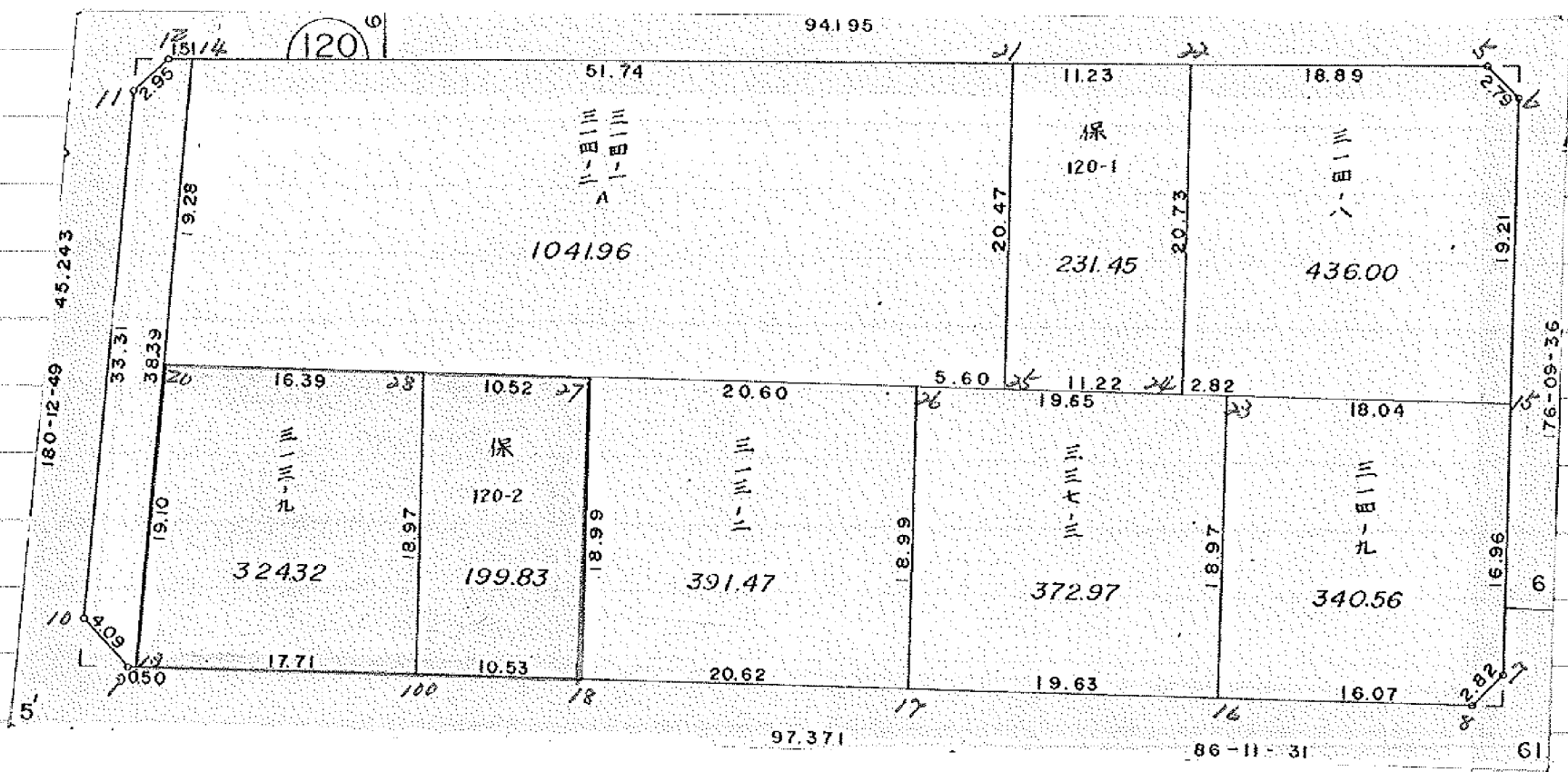


面地確定計算書

BLOCK NO. 120

確定以後変更



\* \* \* \* \* KAKUHITSU MENSEKI KESAN-SHO \* \* \* \* \*

BLOCK . LOT	KAKUHITSU MENSEKI	SUMIKIRI .SUIRO MENSEKI
120 BLOCK	3466.292287	
1 LOT	436.004564	
2 LOT	340.564314	
3 LOT	372.977098	
4 LOT	391.476310	
5 LOT	199.754356	
6 LOT	324.410823	
7 LOT	1041.965918	
8 LOT	231.457889	
入口	127.740385	
1 入三判		1.999942
2 入三判		2.000919
3 入三判		4.488405
4 入三判		1.991377
TOTAL =	3466.351657	10.480643

\* \* \* \* \* M E N S E K I K E I S A N \* \* \* \* \*

120 BLOCK

TENMEI	X	Y	(X-X0)*(YN-1-Y0)	(XN-1-X0)*(Y-Y0)
X0.Y0	- 150300.000	- 38800.000		
OS120-5	- 150340.121	- 38858.734		
OS120-6	- 150341.939	- 38856.608	+ 2463.245226	+ 2271.169568
OS120-7	- 150378.043	- 38854.184	+ 4417.858144	+ 2272.422776
OS120-8	- 150380.172	- 38856.046	+ 4344.039648	+ 4373.997978
OS120-9	- 150385.822	- 38940.936	+ 4809.979812	+ 11299.120992
OS120-10	- 150383.021	- 38943.918	+ 11700.647656	+ 12351.330596
OS120-11	- 150349.710	- 38943.793	+ 7154.163780	+ 11937.838653
OS120-12	- 150347.532	- 38941.794	+ 6834.768876	+ 7048.579740
OS120-5	- 150340.121	- 38858.734	+ 5688.917074	+ 2791.744488
			+ 47413.620216	+ 54346.204791
		BAI MENSEKI =	6932.584575	
		MENSEKI =	3466.292287	

1 LOT

TENMEI	X	Y	(X-X0)*(YN-1-Y0)	(XN-1-X0)*(Y-Y0)
X0.Y0	- 150300.000	- 38800.000		
OS120-5	- 150340.121	- 38858.734		
OS120-6	- 150341.939	- 38856.608	+ 2463.245226	+ 2271.169568
OS120-15	- 150361.115	- 38855.321	+ 3459.597920	+ 2320.107419
OS120-23	- 150362.304	- 38873.324	+ 3446.719584	+ 4481.196260
OS120-24	- 150362.489	- 38876.142	+ 4581.943436	+ 4743.951168
OS120-22	- 150341.799	- 38877.554	+ 3182.659458	+ 4846.271906
OS120-5	- 150340.121	- 38858.734	+ 3111.544034	+ 2455.022466
			+ 20245.709658	+ 21117.718787
		BAI MENSEKI =	872.009129	
		MENSEKI =	436.004564	

2 LOT

TENMEI	X	Y	(X-X0)*(YN-1-Y0)	(XN-1-X0)*(Y-Y0)
X0.Y0	- 150300.000	- 38800.000		
OS120-15	- 150361.115	- 38855.321		
OS120-7	- 150378.043	- 38854.184	+ 4317.416803	+ 3311.455160
OS120-8	- 150380.172	- 38856.046	+ 4344.039648	+ 4373.997978
OS120-16	- 150381.239	- 38872.082	+ 4553.120994	+ 5778.958104
OS120-23	- 150362.304	- 38873.324	+ 4490.996928	+ 5956.768436
OS120-15	- 150361.115	- 38855.321	+ 4481.196260	+ 3446.719584
			+ 22186.770633	+ 22867.899262
		BAI MENSEKI =	681.128629	
		MENSEKI =	340.564314	

\* \* \* \* \* M E N S E K I K E I S A N \* \* \* \* \*

3 LOT

TENMEI	X	Y	(X-X0)*(YN-1-Y0)	(XN-1-X0)*(Y-Y0)
X0.Y0	- 150300.000	- 38800.000		
OS120-23	- 150362.304	- 38873.324		
OS120-16	- 150381.239	- 38872.082	+ 5956.768436	+ 4490.996928
OS120-17	- 150382.543	- 38891.670	+ 5949.864526	+ 7447.179130
OS120-26	- 150363.591	- 38892.942	+ 5829.386970	+ 7671.711506
OS120-25	- 150363.224	- 38887.348	+ 5876.165008	+ 5554.546668
OS120-24	- 150362.489	- 38876.142	+ 5458.289172	+ 4814.001808
OS120-23	- 150362.304	- 38873.324	+ 4743.951168	+ 4581.943436
			+ 33814.425280	+ 34560.379476
		BAI MENSEKI =	745.954196	
		MENSEKI =	372.977098	

4 LOT

TENMEI	X	Y	(X-X0)*(YN-1-Y0)	(XN-1-X0)*(Y-Y0)
X0.Y0	- 150300.000	- 38800.000		
OS120-26	- 150363.591	- 38892.942		
OS120-17	- 150382.543	- 38891.670	+ 7671.711506	+ 5829.386970
OS120-18	- 150383.913	- 38912.245	+ 7692.304710	+ 9265.039035
OS120-27	- 150364.960	- 38913.496	+ 7291.435200	+ 9523.789848
OS120-26	- 150363.591	- 38892.942	+ 7217.324136	+ 6037.512320
			+ 29872.775552	+ 30655.728173
		BAI MENSEKI =	782.952621	
		MENSEKI =	391.476310	

5 LOT

TENMEI	X	Y	(X-X0)*(YN-1-Y0)	(XN-1-X0)*(Y-Y0)
X0.Y0	- 150300.000	- 38900.000		
OS120-27	- 150364.960	- 38913.496		
OS120-18	- 150383.913	- 38912.245	+ 1132.489848	+ 795.435200
OS120-19	- 150384.612	- 38922.745	+ 1036.073940	+ 1908.601185
OS120-28	- 150365.680	- 38923.993	+ 1493.891600	+ 2030.095716
OS120-27	- 150364.960	- 38913.496	+ 1558.585280	+ 886.417280
			+ 5221.040668	+ 5620.549381
		BAI MENSEKI =	399.508713	
		MENSEKI =	199.754356	

6 LOT

TENMEI	X	Y	(X-X0)*(YN-1-Y0)	(XN-1-X0)*(Y-Y0)
X0.Y0	- 150300.000	- 38900.000		
OS120-28	- 150365.680	- 38923.993		
OS120-19	- 150384.612	- 38922.745	+ 2030.095716	+ 1493.891600

\*\*\*\*\* MENSEKI KEISAN \*\*\*\*\*

TENMEI	X	Y	(X-X0)*(YN-1-Y0)	(XN-1-X0)*(Y-Y0)
OS120-13	- 150385.788	- 38940.428	+ 1951.248060	+ 3420.693936
OS120-20	- 150366.682	- 38940.357	+ 2695.819896	+ 3462.146316
OS120-28	- 150365.680	- 38923.993	+ 2650.647760	+ 1599.901226
			+ 9327.811432	+ 9976.633078
		BAI MENSEKI =	648.821646	
		MENSEKI =	324.410823	

7 LOT

TENMEI	X	Y	(X-X0)*(YN-1-Y0)	(XN-1-X0)*(Y-Y0)
X0.Y0	- 150300.000	- 38800.000		
OS120-21	- 150342.798	- 38888.747		
OS120-25	- 150363.224	- 38887.348	+ 5810.940328	+ 3738.319704
OS120-26	- 150363.591	- 38892.942	+ 5554.546668	+ 5876.165008
OS120-27	- 150364.960	- 38913.496	+ 6037.512320	+ 7217.324136
OS120-28	- 150365.680	- 38923.993	+ 7454.417280	+ 8054.585280
OS120-20	- 150366.682	- 38940.357	+ 8268.101226	+ 9218.647760
OS120-14	- 150347.397	- 38940.285	+ 6652.500729	+ 9354.484370
OS120-21	- 150342.798	- 38888.747	+ 6003.917430	+ 4206.341559
			+ 45581.935981	+ 47665.867817
		BAI MENSEKI =	2083.931836	
		MENSEKI =	1041.965918	

8 LOT

TENMEI	X	Y	(X-X0)*(YN-1-Y0)	(XN-1-X0)*(Y-Y0)
X0.Y0	- 150300.000	- 38800.000		
OS120-22	- 150341.799	- 38877.554		
OS120-24	- 150362.489	- 38876.142	+ 4846.271906	+ 3182.659458
OS120-25	- 150363.224	- 38887.348	+ 4814.001808	+ 5458.289172
OS120-21	- 150342.798	- 38888.747	+ 3738.319704	+ 5610.940328
OS120-22	- 150341.799	- 38877.554	+ 3709.535853	+ 3319.156092
			+ 17108.129271	+ 17571.045050
		BAI MENSEKI =	462.915779	
		MENSEKI =	231.457889	

λ10

TENMEI	X	Y	(X-X0)*(YN-1-Y0)	(XN-1-X0)*(Y-Y0)
X0.Y0	- 150300.000	- 38900.000		
OS120-14	- 150347.397	- 38940.285		
OS120-20	- 150366.682	- 38940.357	+ 2686.284370	+ 1912.800729
OS120-13	- 150385.788	- 38940.428	+ 3462.146316	+ 2695.819896
OS120-9	- 150385.822	- 38940.936	+ 3469.611816	+ 3511.817568
OS120-10	- 150383.021	- 38943.918	+ 3398.547656	+ 3769.130596

\* \* \* \* \* M E N S E K I K E I S A N \* \* \* \* \*

TENMEI	X	Y	(X-X0)*(YN-1-Y0)	(XN-1-X0)*(Y-Y0)
OS120-11	- 150349.710	- 38943.793	+ 2183.163780	+ 3635.738653
OS120-12	- 150347.532	- 38941.794	+ 2081.568876	+ 2077.579740
OS120-14	- 150347.397	- 38940.285	+ 1980.910218	+ 1914.826620
			+ 19262.233032	+ 19517.713802
		BAI MENSEKI =	255.480770	
		MENSEKI =	127.740385	

1 入替り

TENMEI	X	Y	(X-X0)*(YN-1-Y0)	(XN-1-X0)*(Y-Y0)
X0.Y0	- 150300.000	- 38800.000		
OS120-1	- 150339.943	- 38856.742		
OS120-5	- 150340.121	- 38858.734	+ 2276.545782	+ 2346.012162
OS120-6	- 150341.939	- 38856.608	+ 2463.245226	+ 2271.169568
OS120-1	- 150339.943	- 38856.742	+ 2261.093344	+ 2379.702738
			+ 7000.884352	+ 6996.884468
		BAI MENSEKI =	3.999884	
		MENSEKI =	1.999942	

2 入替り

TENMEI	X	Y	(X-X0)*(YN-1-Y0)	(XN-1-X0)*(Y-Y0)
X0.Y0	- 150300.000	- 38800.000		
OS120-2	- 150380.039	- 38854.050		
OS120-7	- 150378.043	- 38854.184	+ 4218.224150	+ 4336.833176
OS120-8	- 150380.172	- 38856.046	+ 4344.039648	+ 4373.997978
OS120-2	- 150380.039	- 38854.050	+ 4485.865794	+ 4333.296600
			+ 13048.129592	+ 13044.127754
		BAI MENSEKI =	4.001838	
		MENSEKI =	2.000919	

3 入替り

TENMEI	X	Y	(X-X0)*(YN-1-Y0)	(XN-1-X0)*(Y-Y0)
X0.Y0	- 150300.000	- 38900.000		
OS120-3	- 150386.021	- 38943.929		
OS120-9	- 150385.822	- 38940.936	+ 3770.074638	+ 3521.355656
OS120-10	- 150383.021	- 38943.918	+ 3398.547656	+ 3769.130596
OS120-3	- 150386.021	- 38943.929	+ 3777.870278	+ 3647.029509
			+ 10946.492572	+ 10937.515761
		BAI MENSEKI =	8.976811	
		MENSEKI =	4.488405	

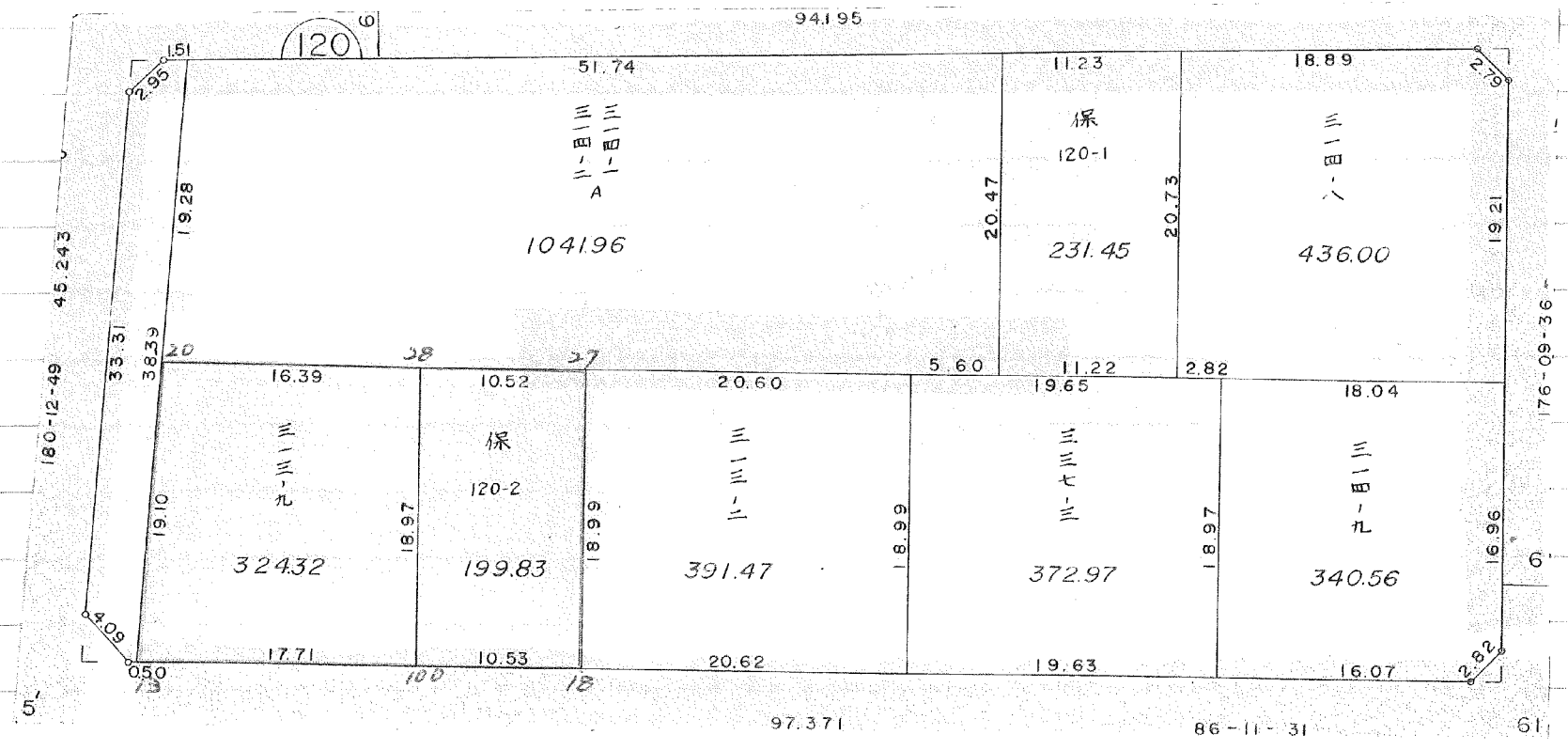
\* \* \* \* \* M E N S E K I K E I S A N \* \* \* \* \*

4 入替り

TENMEI	X	Y	(X-X0)*(YN-1-Y0)	(XN-1-X0)*(Y-Y0)
X0.Y0	- 150300.000	- 38900.000		
OS120-4	- 150347.710	- 38943.786		
OS120-11	- 150349.710	- 38943.793	+ 2176.602060	+ 2089.364030
OS120-12	- 150347.532	- 38941.794	+ 2081.568876	+ 2077.579740
OS120-4	- 150347.710	- 38943.786	+ 1993.991740	+ 2081.236152
			+ 6252.162676	+ 6248.179922
		BAI MENSEKI =	3.982754	
		MENSEKI =	1.991377	



確定以後変更



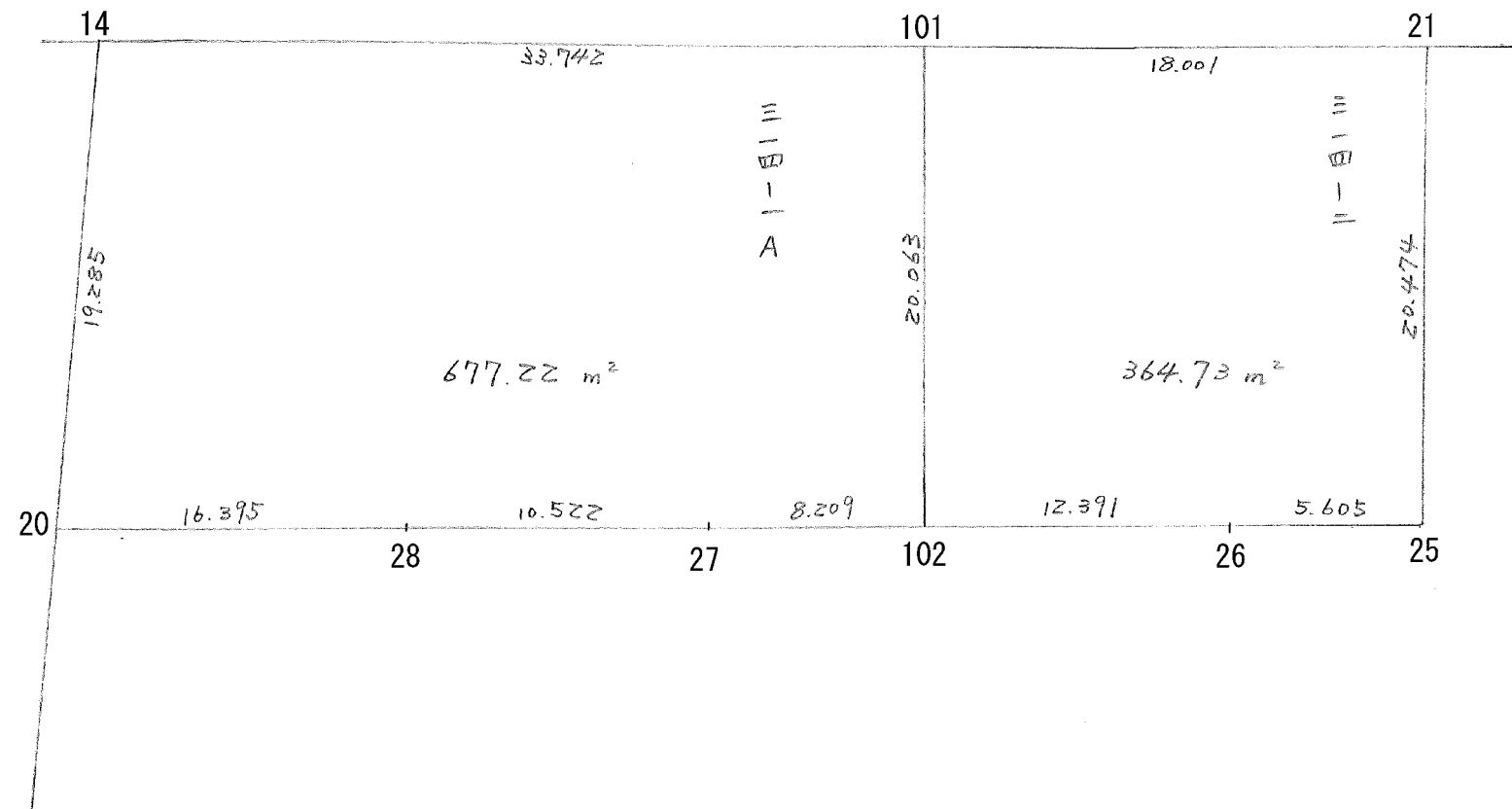
5 LOT

元NO. X <sub>0</sub> Y <sub>0</sub>	X	Y	(X-X <sub>0</sub> )(Y <sub>N-1</sub> -Y <sub>0</sub> )	(X <sub>N-1</sub> -X <sub>0</sub> )(Y-Y <sub>0</sub> )
	-150300.000	-38900.000		
27	-150364.960	-38913.496		
18	-150383.913	-38912.245	1132.489848	795.435200
100	-150384.612	-38922.754	1036.073940	1909.356402
28	-150365.680	-38923.993	1494.482720	2030.095716
27	-150364.960	-38913.496	1558.585280	886.417280
			5221.631788	5621.304598
			平均値=	399.672810
			分散=	199.836405

6 LOT

元NO. X <sub>0</sub> Y <sub>0</sub>	X	Y	(X-X <sub>0</sub> )(Y <sub>N-1</sub> -Y <sub>0</sub> )	(X <sub>N-1</sub> -X <sub>0</sub> )(Y-Y <sub>0</sub> )
	-150300.000	-38900.000		
28	-150365.680	-38923.993		
100	-150384.612	-38922.754	2030.095716	1494.482720
13	-150385.788	-38940.428	1952.020152	3420.693936
20	-150366.682	-38940.357	2695.819896	3462.146316
28	-150365.680	-38923.993	2650.647760	1599.901226
			9328.583524	9977.224198
			平均値=	648.640674
			分散=	324.320337

BN 0120



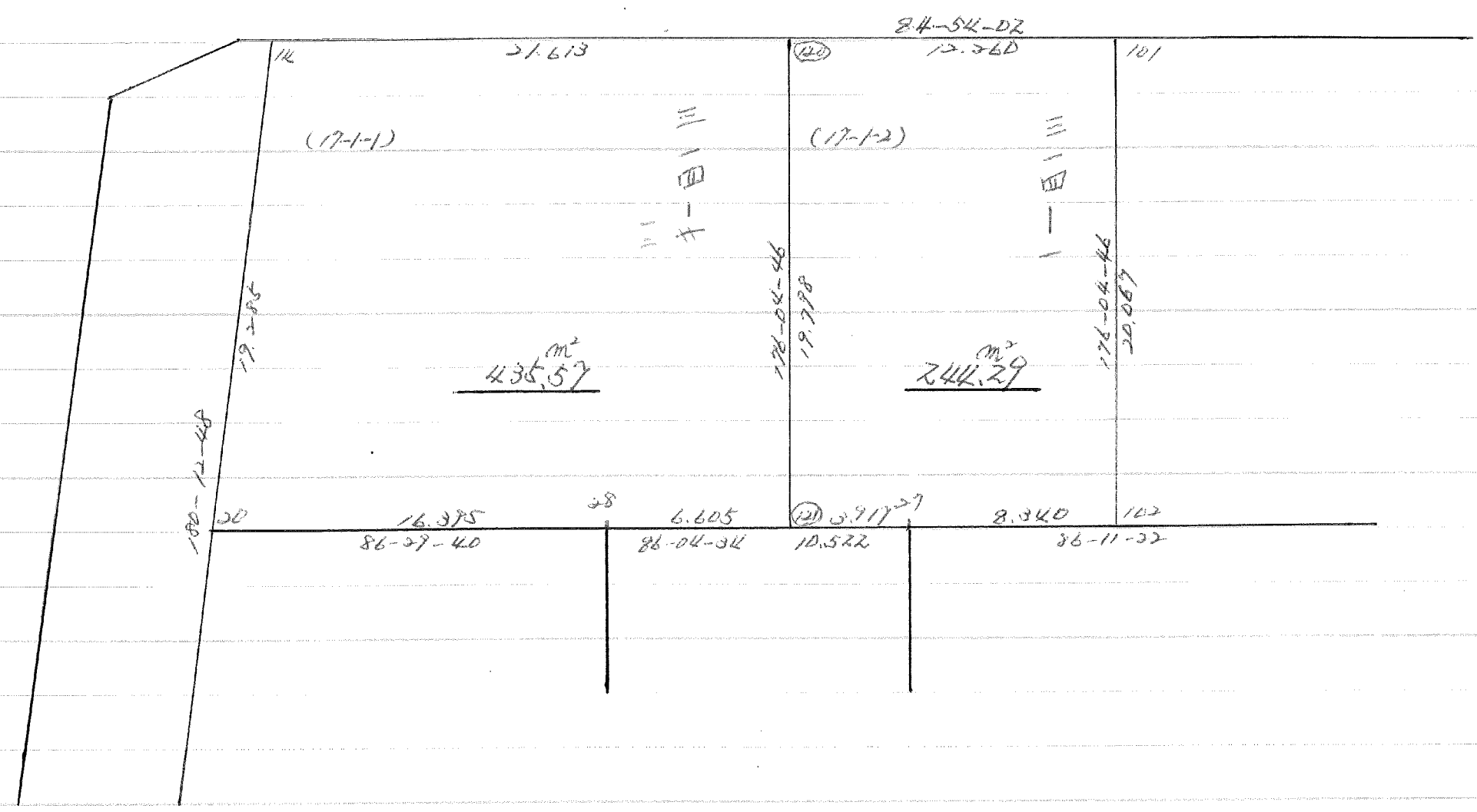
7-1 LOT

7-1 LOT PONO, X <sub>o</sub> Y <sub>o</sub>	X	Y	(X-X <sub>o</sub> ) (YN-1-Y <sub>o</sub> )	(XN-1-X <sub>o</sub> ) (Y-Y <sub>o</sub> )
101	-150300.000	-38900.000		
102	-150344.398	-38906.677		
27	-150364.414	-38905.305	430.092278	235.531390
28	-150364.960	-38913.496	344.612800	869.331344
20	-150365.680	-38923.993	886.417280	1558.585280
14	-150366.682	-38940.357	1599.901226	2650.647760
101	-150347.397	-38940.285	1912.800729	2686.284370
101	-150344.398	-38906.677	1788.573430	316.469769
			6962.397743	8316.849913
			ハ イムセキ=	1354.452170
			ムセキ=	677.226085

7-2 LOT

7-2 LOT PONO, X <sub>o</sub> Y <sub>o</sub>	X	Y	(X-X <sub>o</sub> ) (YN-1-Y <sub>o</sub> )	(XN-1-X <sub>o</sub> ) (Y-Y <sub>o</sub> )
21	-150300.000	-38800.000		
25	-150342.798	-38888.747		
26	-150363.224	-38887.348	5610.940328	3738.319704
102	-150363.591	-38892.942	5554.546668	5876.165008
101	-150364.414	-38905.305	5986.765988	6696.450255
101	-150344.398	-38906.677	4675.331390	6871.492278
21	-150342.798	-38888.747	4565.562246	3940.189306
			26393.146620	27122.616551
			ハ イムセキ=	729.489931
			ムセキ=	364.734965

120 BLOCK



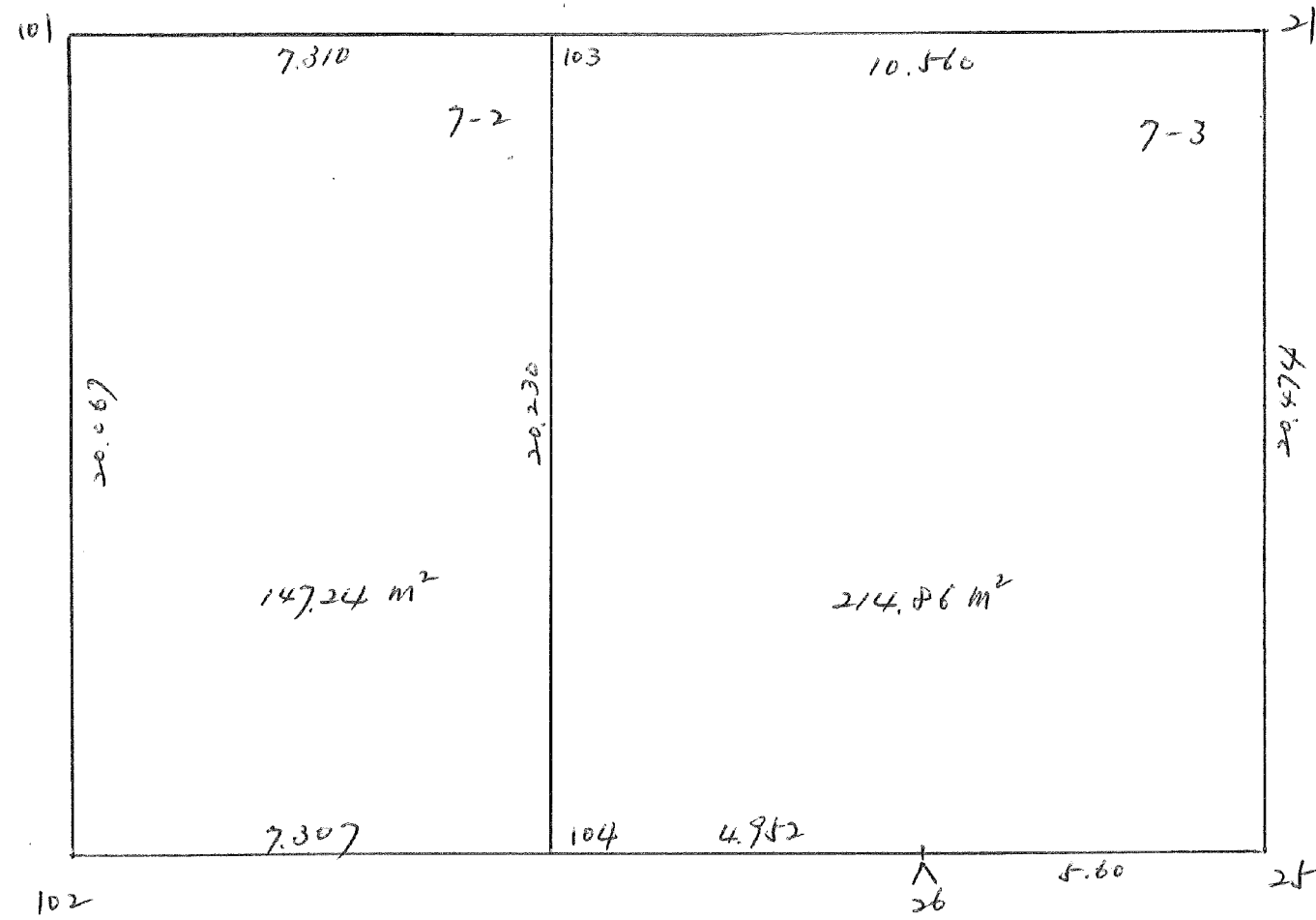
7-1-1 LOT

元NO.	X	Y	(X-X <sub>0</sub> )(Y <sub>N-1</sub> -Y <sub>0</sub> )	(X <sub>N-1</sub> -X <sub>0</sub> )(Y-Y <sub>0</sub> )
X <sub>0</sub> Y <sub>0</sub>	-150300.000	-38900.000		
14	-150347.397	-38940.285		
120	-150345.476	-38918.758	1832.000660	889.072926
121	-150365.228	-38917.404	1223.546824	791.464304
28	-150365.680	-38923.993	1143.094720	1565.015404
20	-150366.682	-38940.357	1599.901226	2650.647760
14	-150347.397	-38940.285	1912.800729	2686.284370
			7711.344159	8582.484764
			平均X座標=	871.140605
			平均Y座標=	435.570302

7-1-2 LOT

元NO.	X	Y	(X-X <sub>0</sub> )(Y <sub>N-1</sub> -Y <sub>0</sub> )	(X <sub>N-1</sub> -X <sub>0</sub> )(Y-Y <sub>0</sub> )
X <sub>0</sub> Y <sub>0</sub>	-150300.000	-38900.000		
120	-150345.476	-38918.758		
101	-150344.386	-38906.546	832.592588	297.685896
102	-150364.406	-38905.174	421.601676	229.653164
27	-150364.960	-38913.496	336.103040	869.223376
121	-150365.228	-38917.404	880.317088	1130.563840
120	-150345.476	-38918.758	791.464304	1223.546824
			3262.078696	3750.673100
			平均X座標=	488.594404
			平均Y座標=	244.297202

BNO, 120



120 BLOCK

元NO.	X	Y	(X-X <sub>0</sub> )(Y <sub>N-1</sub> -Y <sub>0</sub> )	(X <sub>N-1</sub> -X <sub>0</sub> )(Y-Y <sub>0</sub> )
X <sub>0</sub> , Y <sub>0</sub> =	-150300.000	-38800.000		
101	-150344.386	-38906.546		
21	-150342.798	-38888.747	4559.955708	3939.124342
25	-150363.224	-38887.348	5610.940328	3738.319704
26	-150363.591	-38892.942	5554.546668	5876.165008
102	-150364.406	-38905.174	5986.022452	6688.119834
101	-150344.386	-38906.546	4668.253164	6862.201676
			26379.718320	27103.930564
			平イノセキ=	724.212244
			ノセキ=	362.106122

7-2 LOT

元NO.	X	Y	(X-X <sub>0</sub> )(Y <sub>N-1</sub> -Y <sub>0</sub> )	(X <sub>N-1</sub> -X <sub>0</sub> )(Y-Y <sub>0</sub> )
X <sub>0</sub> , Y <sub>0</sub> =	-150300.000	-38800.000		
101	-150344.386	-38906.546		
103	-150343.737	-38899.265	4660.002402	4405.976290
104	-150363.920	-38897.883	6345.018800	4281.108771
102	-150364.406	-38905.174	6304.252498	6722.722080
101	-150344.386	-38906.546	4668.253164	6862.201676
			21977.526864	22272.008817
			平イノセキ=	294.481953
			ノセキ=	147.240977

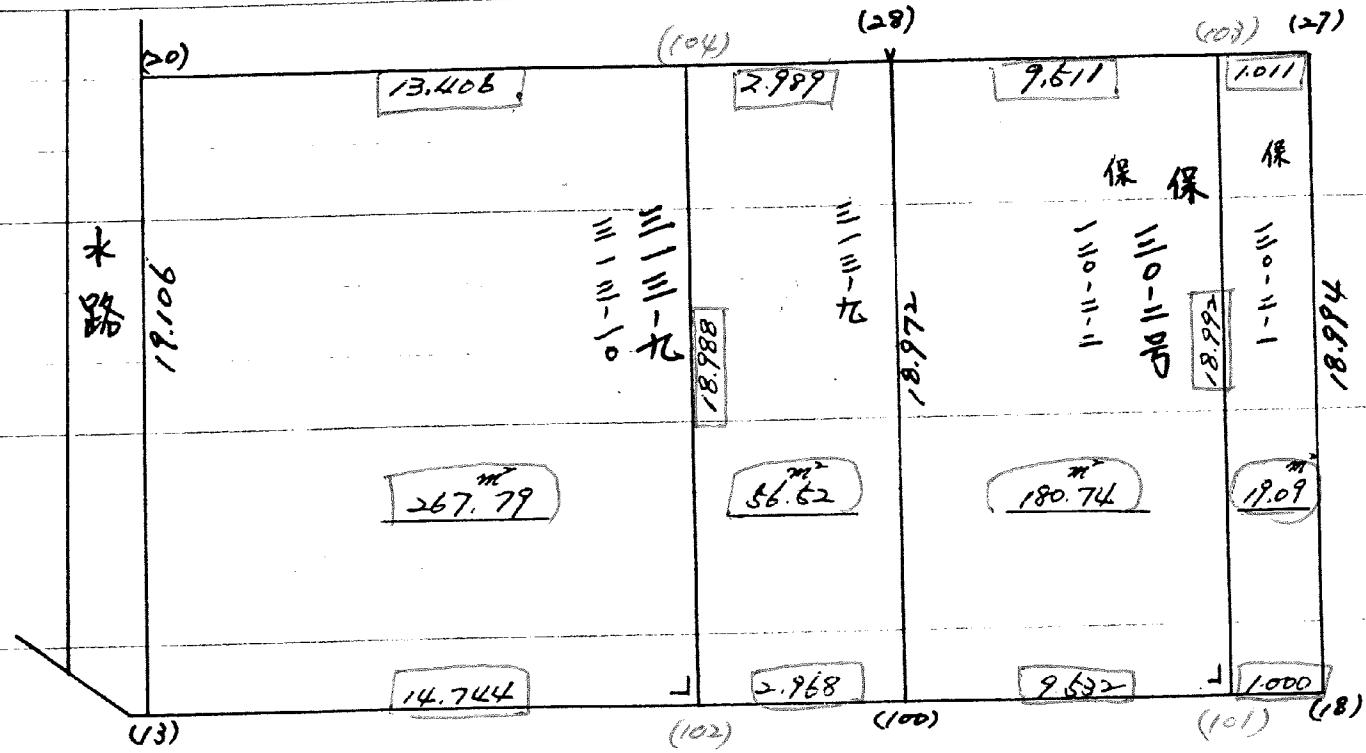
7-3 LOT

元NO.	X	Y	(X-X <sub>0</sub> )(Y <sub>N-1</sub> -Y <sub>0</sub> )	(X <sub>N-1</sub> -X <sub>0</sub> )(Y-Y <sub>0</sub> )
X <sub>0</sub> , Y <sub>0</sub> =	-150300.000	-38800.000		
103	-150343.737	-38899.265		
21	-150342.798	-38888.747	4248.343470	3881.527539
25	-150363.224	-38887.348	5610.940328	3738.319704
26	-150363.591	-38892.942	5554.546668	5876.165008
104	-150363.920	-38897.883	5940.852640	6224.477853
103	-150343.737	-38899.265	4281.108771	6345.018800
			25635.791877	26065.508904
			平イノセキ=	429.717027
			ノセキ=	214.858514

214.86  
 地画計画(2)別添  
 214.86



120 Block.



5 .6 LOT

テリNO. X。Y。	X	Y	(X-X。)(YN-1-Y。)	(XN-1-X。)(Y-Y。)
27	-150300.000	-38900.000		
18	-150364.960	-38913.496	1132.489848	795.435200
100	-150383.913	-38912.245	1036.073940	1909.356402
13	-150384.612	-38922.754	1952.020152	3420.693936
20	-150385.788	-38940.428	2695.819896	3462.146316
28	-150366.682	-38940.357	2650.647760	1599.901226
27	-150365.680	-38923.993	1558.585280	886.417280
27	-150364.960	-38913.496		
			11025.636876	12073.950360
			ハ イノセキ=	1048.313484
			ノセキ=	524.156742

5-1(120-2-1 LOT

テリNO. X。Y。	X	Y	(X-X。)(YN-1-Y。)	(XN-1-X。)(Y-Y。)
27	-150300.000	-38900.000		
18	-150364.960	-38913.496	1132.489848	795.435200
101	-150383.913	-38912.245	1028.322855	1111.259859
103	-150383.979	-38913.243	861.179047	1218.031416
27	-150365.029	-38914.504	942.179840	877.631384
27	-150364.960	-38913.496		
			3964.171590	4002.357859
			ハ イノセキ=	38.186269
			ノセキ=	19.093134

5-2(120-2-2) LOT.

テリNO. X。Y。	X	Y	(X-X。)(YN-1-Y。)	(XN-1-X。)(Y-Y。)
101	-150300.000	-38900.000		
100	-150383.979	-38913.243	1120.516716	1910.858166
28	-150384.612	-38922.754	1494.482720	2030.095716
103	-150365.680	-38923.993	1560.240797	952.622720
101	-150365.029	-38914.504	1218.031416	861.179047
101	-150383.979	-38913.243		
			5393.271649	5754.755649
			ハ イノセキ=	361.484000
			ノセキ=	180.742000

6-1 LOT

POINT.	X	Y	(X-X <sub>0</sub> ) (Y-Y <sub>0</sub> )	(X <sub>N-1</sub> -X <sub>0</sub> ) (Y-Y <sub>0</sub> )
X <sub>0</sub> Y <sub>0</sub>	-150300.000	-38900.000		
28	-150365.680	-38923.993	2030.095716	1494.482720
100	-150384.612	-38922.754	1929.743986	2175.797580
102	-150384.809	-38925.715	1693.667045	2287.807584
104	-150365.863	-38926.976	1771.783680	1580.250959
28	-150365.680	-38923.993		
			7425.290427	7538.338843
			1) イ/セキ=	113.048416
			ス/セキ=	56.524206

6-2 LOT

POINT.	X	Y	(X-X <sub>0</sub> ) (Y-Y <sub>0</sub> )	(X <sub>N-1</sub> -X <sub>0</sub> ) (Y-Y <sub>0</sub> )
X <sub>0</sub> Y <sub>0</sub>	-150300.000	-38900.000		
104	-150365.863	-38926.976	2287.807584	1693.667045
102	-150384.809	-38925.715	2206.038420	3428.658252
13	-150385.788	-38940.428	2695.819896	3462.146316
20	-150366.682	-38940.357	2658.033091	1798.813632
104	-150365.863	-38926.976		
			9847.698991	10383.285245
			1) イ/セキ=	535.586254
			ス/セキ=	267.793127