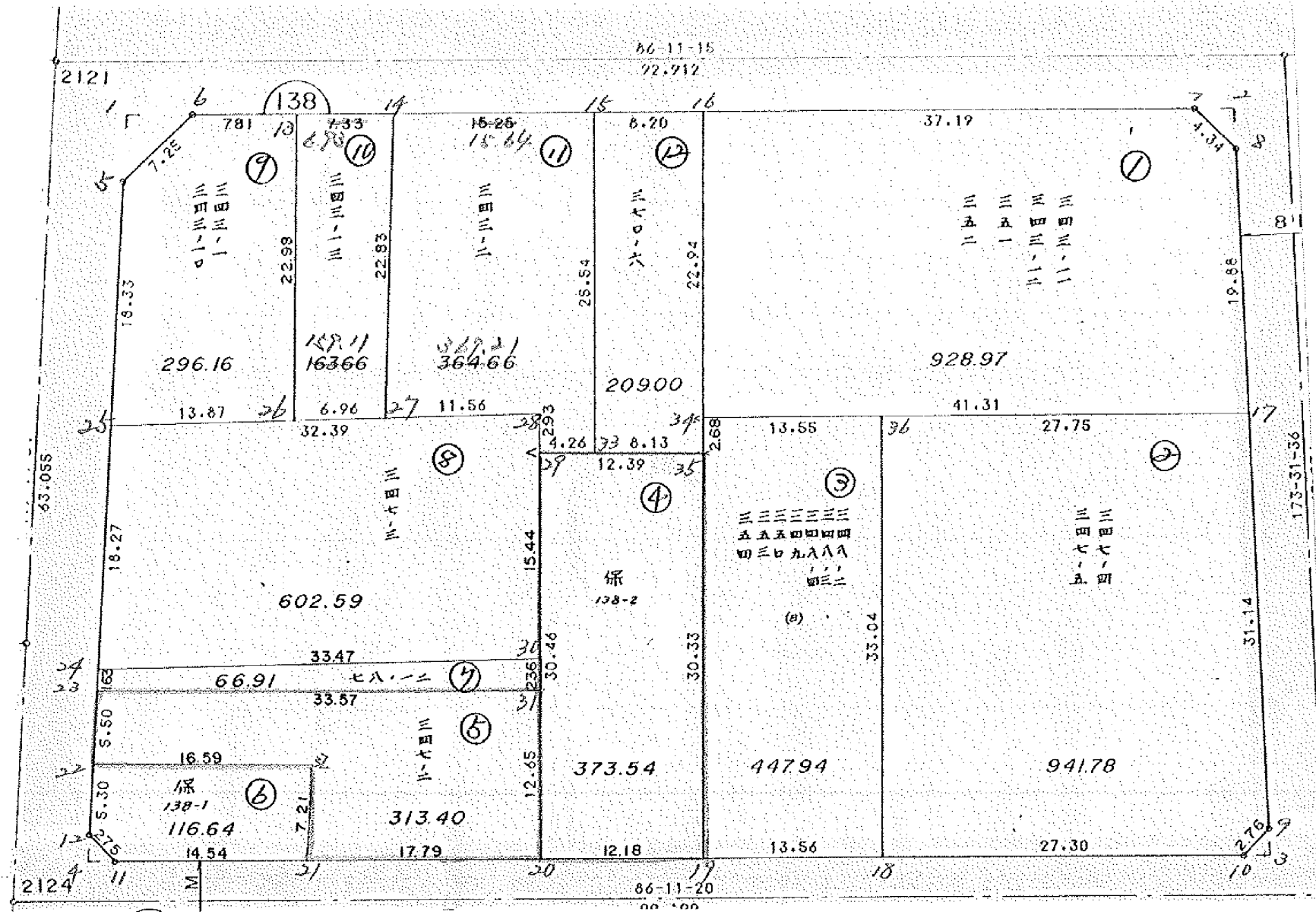


面地確定計算書

**BLOCK NO. 138**

保留地変更 956.12



BLOCK . LOT KAKUHITSU MENSEKI SUMIKIRI.SUIRO MENSEKI

138 BLOCK 4825.324761

1 LOT	928.972417	
2 LOT	941.785416	
3 LOT	447.940958	
4 LOT	<del>375.363273</del>	373.547722
5 LOT	<del>312.331543</del>	313.1106144
6 LOT	<del>116.527729</del>	116.840066
7 LOT	<del>66.774623</del>	66.914841
8 LOT	<del>602.138251</del>	602.573157
9 LOT	<del>299.808340</del>	296.16
10 LOT	<del>159.076813</del>	153.66 159.11
11 LOT	<del>365.607556</del>	364.66 369.21
12 LOT	209.001864	
1 入三キ		12.483456
2 入三キ		4.494697
3 入三キ		1.997988
4 入三キ		1.997729

俾付地調整為新

TOTAL = ~~4825.324761~~ 4825.391483 20.973870

4825.391483

4825.391483

8

138 BLOCK

TENMEI	X	Y	(X-X0)*(YN-1-Y0)	(XN-1-X0)*(Y-Y0)
X0.Y0	- 150500.000	- 38900.000		
OS138-5	- 150540.480	- 39035.623		
OS138-6	- 150535.148	- 39030.700	+ 4766.877204	+ 5290.736000
OS138-7	- 150530.107	- 38955.069	+ 3934.984900	+ 1935.565212
OS138-8	- 150532.889	- 38951.738	+ 1811.164341	+ 1557.675966
OS138-9	- 150583.592	- 38945.985	+ 4324.882896	+ 1512.400665
OS138-10	- 150585.712	- 38947.756	+ 3941.466320	+ 3992.019552
OS138-11	- 150591.387	- 39032.954	+ 4364.277572	+ 11395.753248
OS138-12	- 150589.520	- 39034.976	+ 11902.042080	+ 12335.051712
OS138-5	- 150540.480	- 39035.623	+ 5463.828480	+ 12140.970960
			+ 40509.523793	+ 50160.173315
		BAI MENSEKI =	9650.649522	
		MENSEKI =	4825.324761	

1 LOT

TENMEI	X	Y	(X-X0)*(YN-1-Y0)	(XN-1-X0)*(Y-Y0)
X0.Y0	- 150500.000	- 38900.000		
OS138-7	- 150530.107	- 38955.069		
OS138-8	- 150532.889	- 38951.738	+ 1811.164341	+ 1557.675966
OS138-17	- 150552.648	- 38949.496	+ 2723.902224	+ 1627.873944
OS138-34	- 150555.482	- 38990.712	+ 2746.137072	+ 4775.805376
OS138-16	- 150532.580	- 38992.179	+ 2955.396960	+ 5114.275278
OS138-7	- 150530.107	- 38955.069	+ 2775.233153	+ 1794.148020
			+ 13011.833750	+ 14869.778584
		BAI MENSEKI =	1857.944834	
		MENSEKI =	928.972417	

2 LOT

TENMEI	X	Y	(X-X0)*(YN-1-Y0)	(XN-1-X0)*(Y-Y0)
X0.Y0	- 150500.000	- 38900.000		
OS138-17	- 150552.648	- 38949.496		
OS138-9	- 150583.592	- 38945.985	+ 4137.469632	+ 2421.018280
OS138-10	- 150585.712	- 38947.756	+ 3941.466320	+ 3992.019552
OS138-18	- 150587.527	- 38975.002	+ 4179.939412	+ 6428.571424
OS138-36	- 150554.552	- 38977.188	+ 4091.509104	+ 6756.034076
OS138-17	- 150552.648	- 38949.496	+ 4063.793824	+ 2700.105792
			+ 20414.178292	+ 22297.749124
		BAI MENSEKI =	1883.570832	
		MENSEKI =	941.785416	

3 LOT

TENMEI	X	Y	(X-X0)*(YN-1-Y0)	(XN-1-X0)*(Y-Y0)
X0.Y0	- 150500.000	- 38900.000		
OS138-18	- 150587.527	- 38975.002		
OS138-19	- 150588.428	- 38988.535	+ 6632.276856	+ 7749.202945
OS138-35	- 150558.165	- 38990.537	+ 5149.638275	+ 8006.005836
OS138-34	- 150555.482	- 38990.712	+ 5023.173834	+ 5276.263480
OS138-36	- 150554.552	- 38977.188	+ 4948.521024	+ 4282.544616
OS138-18	- 150587.527	- 38975.002	+ 6756.034076	+ 4091.509104
			+ 28509.644065	+ 29405.525981
		BAI MENSEKI =	895.881916	
		MENSEKI =	447.940958	

4 LOT

TENMEI	X	Y	(X-X0)*(YN-1-Y0)	(XN-1-X0)*(Y-Y0)
X0.Y0	- 150500.000	- 38900.000		
OS138-19	- 150588.428	- 38988.535		
OS138-20	- 150589.246	- 39000.808	+ 7901.394610	+ 8914.249824
OS138-29	- 150558.851	- 39002.915	+ 5932.651608	+ 9184.752090
OS138-35	- 150558.165	- 38990.537	+ 5986.050975	+ 5328.192987
OS138-19	- 150588.428	- 38988.535	+ 8006.005836	+ 5149.638275
			+ 27826.103029	+ 28576.833176
		BAI MENSEKI =	750.730147	
		MENSEKI =	375.365073	

5 LOT

TENMEI	X	Y	(X-X0)*(YN-1-Y0)	(XN-1-X0)*(Y-Y0)
X0.Y0	- 150500.000	- 39000.000		
OS138-20	- 150589.246	- 39000.808		
OS138-21	- 150590.422	- 39018.456	+ 73.060976	+ 1647.124176
OS138-32	- 150583.218	- 39018.935	+ 1535.871408	+ 1712.140570
OS138-22	- 150584.220	- 39035.046	+ 1594.705700	+ 2916.458028
OS138-23	- 150578.712	- 39035.119	+ 2758.540752	+ 2957.722180
OS138-31	- 150576.619	- 39001.683	+ 2690.782661	+ 132.472296
OS138-20	- 150589.246	- 39000.808	+ 150.201018	+ 61.908152
			+ 8803.162515	+ 9427.825402
		BAI MENSEKI =	624.662887	
		MENSEKI =	312.331443	

6 LOT

TENMEI	X	Y	(X-X0)*(YN-1-Y0)	(XN-1-X0)*(Y-Y0)
X0.Y0	- 150500.000	- 39000.000		
OS138-21	- 150590.422	- 39018.456		
OS138-11	- 150591.387	- 39032.954	+ 1686.638472	+ 2979.766588

\*\*\*\*\* MENSEKI KEISAN \*\*\*\*\*

TENMEI	X	Y	(X-X0)*(Y-Y0)	(XN-1-X0)*(Y-Y0)
OS138-12	- 150589.520	- 39034.976	+ 2950.042080	+ 3196.351712
OS138-22	- 150584.220	- 39035.046	+ 2945.678720	+ 3137.317920
OS138-32	- 150583.218	- 39018.935	+ 2916.458028	+ 1594.705700
OS138-21	- 150590.422	- 39018.456	+ 1712.140570	+ 1535.871408
			+ 12210.957870	+ 12444.013328
		BAI MENSEKI =	233.055458	
		MENSEKI =	116.527729	

7 LOT

TENMEI	X	Y	(X-X0)*(Y-Y0)	(XN-1-X0)*(Y-Y0)
X0.Y0	- 150500.000	- 39000.000		
OS138-23	- 150578.712	- 39035.119		
OS138-24	- 150577.080	- 39035.141	+ 2706.972520	+ 2766.018392
OS138-30	- 150574.262	- 39001.846	+ 2609.640942	+ 142.289680
OS138-31	- 150576.619	- 39001.683	+ 141.438674	+ 124.982946
OS138-23	- 150578.712	- 39035.119	+ 132.472296	+ 2690.782661
			+ 5590.524432	+ 5724.073679
		BAI MENSEKI =	133.549247	
		MENSEKI =	66.774623	

8 LOT

TENMEI	X	Y	(X-X0)*(Y-Y0)	(XN-1-X0)*(Y-Y0)
X0.Y0	- 150500.000	- 39000.000		
OS138-24	- 150577.080	- 39035.141		
OS138-25	- 150558.812	- 39035.382	+ 2066.712492	+ 2727.244560
OS138-28	- 150555.923	- 39003.118	+ 1978.667586	+ 183.375816
OS138-30	- 150574.262	- 39001.846	+ 231.548916	+ 103.233858
OS138-24	- 150577.080	- 39035.141	+ 142.289680	+ 2609.640942
			+ 4419.218674	+ 5623.495176
		BAI MENSEKI =	1204.276502	
		MENSEKI =	602.138251	

9 LOT

元NO.	X	Y
5	-150540.480	-39035.623
6	-150535.148	-39030.700
13	-150534.628	-39022.899
26	-150557.575	-39021.568
25	-150558.812	-39035.382
5	-150540.480	-39035.623
	バ イ セキ =	592.3380
	セキ =	296.16

10 LOT

138-10 LOT

テノド.	X	Y
13	-150534.628	-39022.879
14	-150534.167	-39015.981
27	-150556.954	-39014.632
26	-150557.575	-39021.568
13	-150534.628	-39022.879

ハイムセキ= 318.2493  
ノセキ= 159.12

変更後の資料なし

138-11 LOT

テノド.	X	Y
14	-150534.167	-39015.981
15	-150533.127	-39000.369
33	-150558.615	-38998.656
29	-150558.851	-39002.915
28	-150555.923	-39003.118
27	-150556.954	-39014.632
14	-150534.167	-39015.981

ハイムセキ= 738.4267  
ノセキ= 369.21

分筆後の座標なし

12 LOT

TENMEI	X	Y	(X-X0)*(YN-1-Y0)	(XN-1-X0)*(Y-Y0)
X0.Y0	- 150500.000	- 38900.000		
OS138-15	- 150533.126	- 39000.366		
OS138-16	- 150532.580	- 38992.179	+ 3269.924280	+ 3053.521554
OS138-34	- 150555.482	- 38990.712	+ 5114.275278	+ 2955.396960
OS138-35	- 150558.165	- 38990.537	+ 5276.263480	+ 5023.173834
OS138-33	- 150558.615	- 38998.656	+ 5306.826255	+ 5738.326240
OS138-15	- 150533.126	- 39000.366	+ 3268.078656	+ 5882.953090
			+ 22235.367949	+ 22653.371678
	BAI MENSEKI =		418.003729	
	MENSEKI =		209.001864	

1 区割

TENMEI	X	Y	(X-X0)*(YN-1-Y0)	(XN-1-X0)*(Y-Y0)
X0.Y0	- 150500.000	- 39000.000		
OS138-1	- 150535.480	- 39035.689		
OS138-5	- 150540.480	- 39035.623	+ 1444.690720	+ 1263.904040

\*\*\*\*\* MENSEKI KEISAN \*\*\*\*\*

TENMEI	X	Y	(X-X0)*(YN-1-Y0)	(XN-1-X0)*(Y-Y0)
OS138-6	- 150535.148	- 39030.700	+ 1252.077204	+ 1242.736000
OS138-1	- 150535.480	- 39035.689	+ 1089.236000	+ 1254.396972
			+ 3786.003924	+ 3761.037012
		BAI MENSEKI =	24.966912	
		MENSEKI =	12.483456	

2 入替

TENMEI	X	Y	(X-X0)*(YN-1-Y0)	(XN-1-X0)*(Y-Y0)
X0.Y0	- 150500.000	- 38900.000		
OS138-2	- 150529.908	- 38952.076		
OS138-7	- 150530.107	- 38955.069	+ 1567.852132	+ 1647.003652
OS138-8	- 150532.889	- 38951.738	+ 1811.164341	+ 1557.675966
OS138-2	- 150529.908	- 38952.076	+ 1547.380104	+ 1712.727564
			+ 4926.396577	+ 4917.407182
		BAI MENSEKI =	8.989395	
		MENSEKI =	4.494697	

3 入替

TENMEI	X	Y	(X-X0)*(YN-1-Y0)	(XN-1-X0)*(Y-Y0)
X0.Y0	- 150500.000	- 38900.000		
OS138-3	- 150585.579	- 38945.760		
OS138-9	- 150583.592	- 38945.985	+ 3825.169920	+ 3935.350315
OS138-10	- 150585.712	- 38947.756	+ 3941.466320	+ 3992.019552
OS138-3	- 150585.579	- 38945.760	+ 4086.910724	+ 3922.181120
			+ 11853.546964	+ 11849.550987
		BAI MENSEKI =	3.995977	
		MENSEKI =	1.997988	

4 入替

TENMEI	X	Y	(X-X0)*(YN-1-Y0)	(XN-1-X0)*(Y-Y0)
X0.Y0	- 150500.000	- 39000.000		
OS138-4	- 150591.520	- 39034.950		
OS138-11	- 150591.387	- 39032.954	+ 3193.975650	+ 3015.950080
OS138-12	- 150589.520	- 39034.976	+ 2950.042080	+ 3196.351712
OS138-4	- 150591.520	- 39034.950	+ 3201.003520	+ 3128.724000
			+ 9345.021250	+ 9341.025792
		BAI MENSEKI =	3.995458	
		MENSEKI =	1.997729	



4 LOT

元NO. X <sub>0</sub> Y <sub>0</sub>	X	Y	(X-X <sub>0</sub> )(Y <sub>N-1</sub> -Y <sub>0</sub> )	(X <sub>N-1</sub> -X <sub>0</sub> )(Y-Y <sub>0</sub> )
	-150500.000	-38900.000		
35	-150558.165	-38990.537		
19	-150588.428	-38988.535	8006.005836	5149.638275
20	-150589.238	-39000.689	7900.686330	5903.726892
29	-150558.851	-39002.915	5925.648339	9183.928770
35	-150558.165	-38990.537	5986.050975	5328.192987
			27818.391480	28565.486924
			平均イタビキ=	747.095444
			ズレキ=	373.547722

5 LOT

元NO. X <sub>0</sub> Y <sub>0</sub>	X	Y	(X-X <sub>0</sub> )(Y <sub>N-1</sub> -Y <sub>0</sub> )	(X <sub>N-1</sub> -X <sub>0</sub> )(Y-Y <sub>0</sub> )
	-150500.000	-39000.000		
31	-150576.615	-39001.614		
20	-150589.238	-39000.689	144.030132	52.787735
21	-150590.420	-39018.440	62.297380	1645.548720
32	-150583.217	-39018.918	1534.521480	1710.565560
22	-150584.220	-39035.046	1593.273960	2916.422982
23	-150578.711	-39035.119	2758.505706	2957.722180
31	-150576.615	-39001.614	2690.642185	127.039554
			8783.272843	9410.086731
			平均イタビキ=	626.813888
			ズレキ=	313.406944

6 LOT

元NO. X <sub>0</sub> Y <sub>0</sub>	X	Y	(X-X <sub>0</sub> )(Y <sub>N-1</sub> -Y <sub>0</sub> )	(X <sub>N-1</sub> -X <sub>0</sub> )(Y-Y <sub>0</sub> )
	-150500.000	-39000.000		
32	-150583.217	-39018.918		
21	-150590.420	-39018.440	1710.565560	1534.521480
11	-150591.387	-39032.954	1685.176280	2979.700680
12	-150589.520	-39034.976	2950.042080	3196.351712
22	-150584.220	-39035.046	2945.678720	3137.317920
32	-150583.217	-39018.918	2916.422982	1593.273960
			12207.885622	12441.165752
			平均イタビキ=	233.280130
			ズレキ=	116.640065

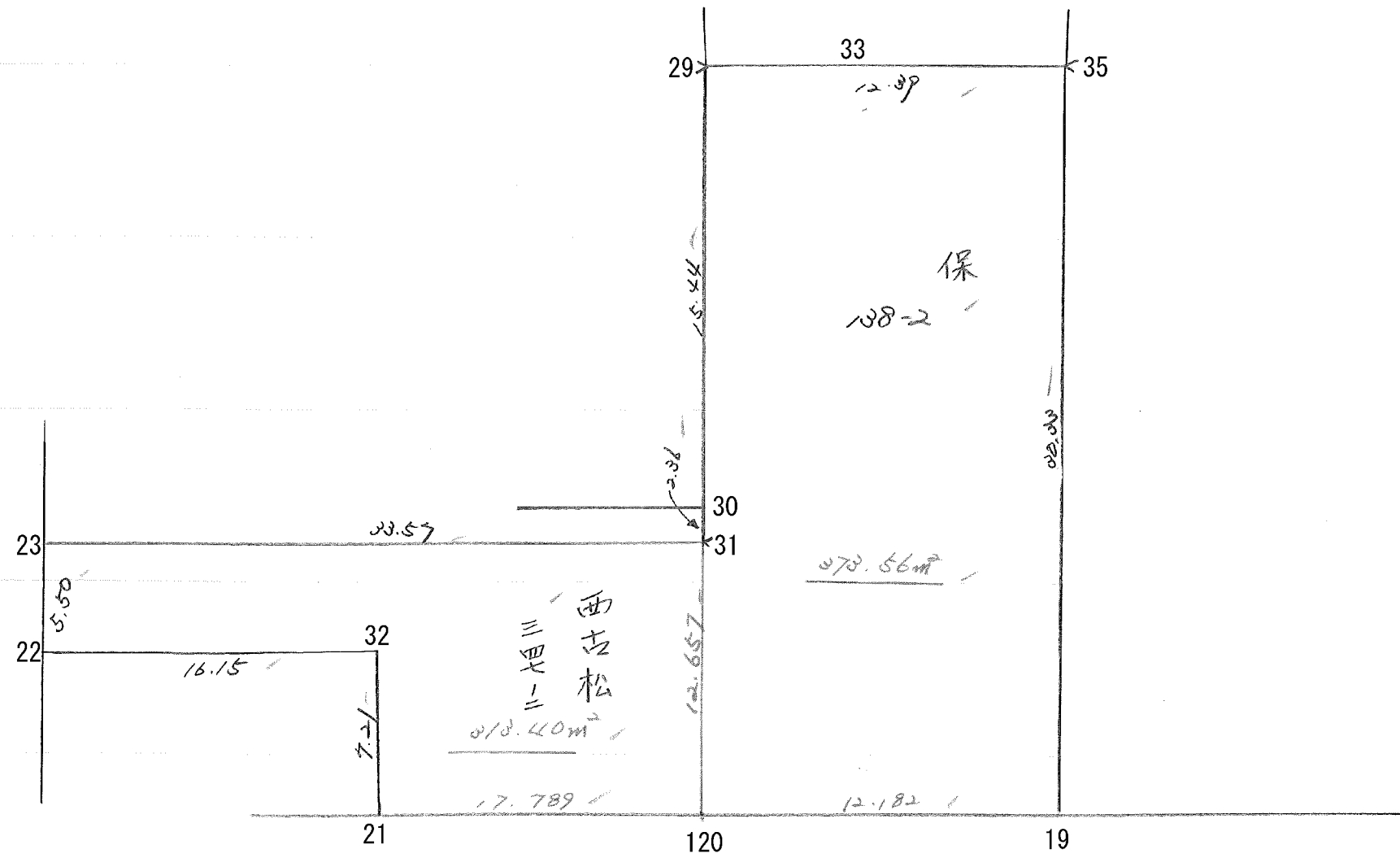
7 LOT

FDNO. X <sub>0</sub> Y <sub>0</sub>	X	Y	(X-X <sub>0</sub> )(Y <sub>N-1</sub> -Y <sub>0</sub> )	(X <sub>N-1</sub> -X <sub>0</sub> )(Y-Y <sub>0</sub> )
	-150500.000	-39000.000		
30	-150574.258	-39001.787		
31	-150576.615	-39001.614	136.911005	119.852412
23	-150578.711	-39035.119	127.039554	2690.642185
24	-150577.079	-39035.141	2706.937401	2765.983251
30	-150574.258	-39001.787	2609.500378	137.740173
			5580.386338	5714.218021
			平均値=	133.829683
			標準値=	66.914841

8 LOT

FDNO. X <sub>0</sub> Y <sub>0</sub>	X	Y	(X-X <sub>0</sub> )(Y <sub>N-1</sub> -Y <sub>0</sub> )	(X <sub>N-1</sub> -X <sub>0</sub> )(Y-Y <sub>0</sub> )
	-150500.000	-39000.000		
28	-150555.923	-39003.118		
29	-150558.851	-39002.915	183.497418	163.015545
30	-150574.258	-39001.787	216.462070	105.166737
24	-150577.079	-39035.141	137.740173	2609.500378
25	-150558.812	-39035.382	2066.712492	2727.209178
28	-150555.923	-39003.118	1978.667586	183.375816
			4583.079739	5788.267654
			平均値=	1205.187915
			標準値=	602.593957

08 Block.

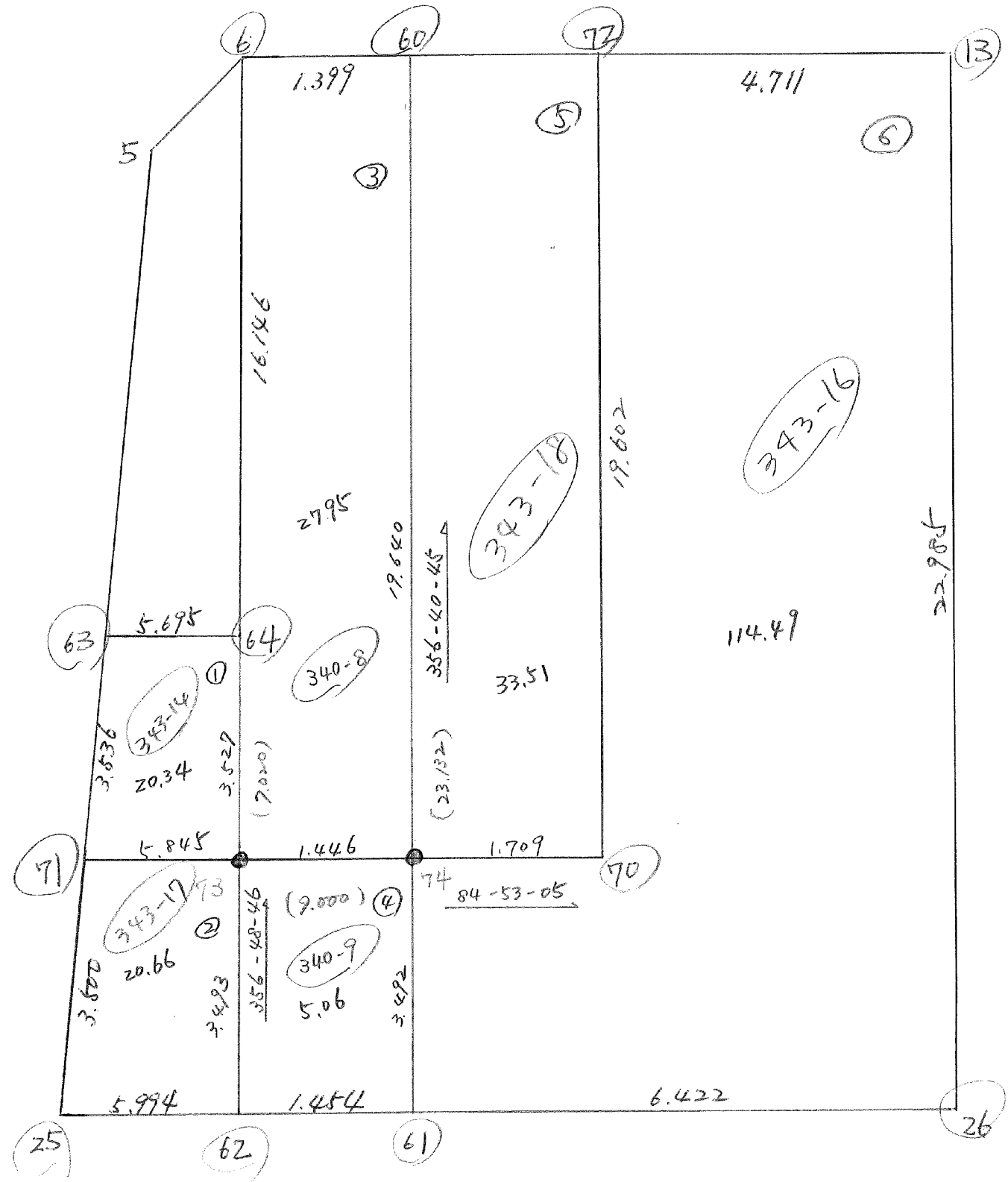


(株)138-2 LOT

元NO. X <sub>0</sub> Y <sub>0</sub>	X	Y	(X-X <sub>0</sub> )(Y <sub>N-1</sub> -Y <sub>0</sub> )	(X <sub>N-1</sub> -X <sub>0</sub> )(Y-Y <sub>0</sub> )
19	-150588.428 ✓	-38988.535 ✓		
120	-150589.238	-39000.690	7900.686330	8903.815320
31	-150576.615 ✓	-39001.614 ✓	7714.364350	9067.830132
30	-150574.258 ✓	-39001.787 ✓	7545.652412	7798.411005
29	-150558.851 ✓	-39002.915 ✓	5990.266737	7642.262070
33	-150558.615 ✓	-38998.656 ✓	6032.362725	5806.004256
35	-150558.165 ✓	-38990.537 ✓	5738.326240	5306.826255
19	-150588.428	-38988.535	8006.005836	5149.638275
			48927.664630	49674.787313
			ハイムセキ=	747.122683
			ムセキ=	373.561341

5 LOT

元NO. X <sub>0</sub> Y <sub>0</sub>	X	Y	(X-X <sub>0</sub> )(Y <sub>N-1</sub> -Y <sub>0</sub> )	(X <sub>N-1</sub> -X <sub>0</sub> )(Y-Y <sub>0</sub> )
120	-150589.238	-39000.690		
21	-150590.420 ✓	-39018.440 ✓	62.389800	1645.548720
32	-150583.217 ✓	-39018.918 ✓	1534.521480	1710.565560
22	-150584.220 ✓	-39035.046 ✓	1593.273960	2916.422982
23	-150578.711 ✓	-39035.119 ✓	2758.505706	2957.722180
31	-150576.615	-39001.614	2690.642185	127.039554
120	-150589.238	-39000.690	144.030132	52.864350
			8783.363263	9410.163346
			ハイムセキ=	626.800083
			ムセキ=	313.400041



6	-150,535.148	-39,030.700
13	-150,534.628	-39,022.899
25	-150,558.812	-39,035.382
26	-150,557.575	-39,021.568
60	-150,535.055	-39,029.304
61	-150,558.148	-39,027.964
62	-150,558.278	-39,029.412
63	-150,551.777	-39,035.475
64	-150,551.269	-39,029.803
70	-150,554.510	-39,026.464
71	-150,555.312	-39,035.428
72	-150,534.941	-39,027.600

1-5 BLOCK

POINT X <sub>0</sub> Y <sub>0</sub>	X	Y	(X-X <sub>0</sub> ) (Y <sub>N-1</sub> -Y <sub>0</sub> )	(X <sub>N-1</sub> -X <sub>0</sub> ) (Y-Y <sub>0</sub> )
	-150500.000	-39000.000		
8	-150535.148	-39030.700	1076.188500	1029.976992
60	-150535.055	-39029.304	1023.911064	967.518000
72	-150534.941	-39027.600	955.732800	800.113959
13	-150534.628	-39022.899	1318.409925	746.856704
26	-150557.575	-39021.568	1254.136064	1610.027300
61	-150558.148	-39027.964	1629.685992	1710.248976
62	-150558.278	-39029.412	1729.778544	2061.992196
25	-150558.812	-39035.382	1957.049184	2083.591536
71	-150555.312	-39035.428	1834.355556	1962.193200
63	-150551.777	-39035.475	1818.767775	1543.109931
64	-150551.269	-39029.803	1047.515844	1573.958300
6	-150535.148	-39030.700		
			15645.531248	16089.587094
			Δ <sup>2</sup> X/Y =	444.055846
			Δ <sup>2</sup> Y/X =	222.027923

1 LOT

POINT X <sub>0</sub> Y <sub>0</sub>	X	Y	(X-X <sub>0</sub> ) (Y <sub>N-1</sub> -Y <sub>0</sub> )	(X <sub>N-1</sub> -X <sub>0</sub> ) (Y-Y <sub>0</sub> )
	-150500.000	-39000.000		
63	-150551.777	-39035.475	1818.767775	1543.109931
64	-150551.269	-39029.803	1632.936173	1517.870014
73	-150554.791	-39029.606	1637.567072	1941.135548
71	-150555.312	-39035.428	1834.355556	1962.193200
63	-150551.777	-39035.475		
			6923.626576	6964.308693
			Δ <sup>2</sup> X/Y =	40.682117
			Δ <sup>2</sup> Y/X =	20.341058

2 LOT

POINT X <sub>0</sub> Y <sub>0</sub>	X	Y	(X-X <sub>0</sub> ) (Y <sub>N-1</sub> -Y <sub>0</sub> )	(X <sub>N-1</sub> -X <sub>0</sub> ) (Y-Y <sub>0</sub> )
	-150500.000	-39000.000		
71	-150555.312	-39035.428	1941.135548	1637.567072
73	-150554.791	-39029.606	1725.378468	1611.513892
62	-150558.278	-39029.412	1729.778544	2061.992196
25	-150558.812	-39035.382		

71	-150535.312	-39035.428	1957.049184	2083.591536
			7353.341744	7394.663696
			平均値=	41.321952
			分散=	20.660976

3 LOT

元/NO. X <sub>0</sub> Y <sub>0</sub>	X	Y	(X-X <sub>0</sub> ) (Y <sub>N-1</sub> -Y <sub>0</sub> )	(X <sub>N-1</sub> -X <sub>0</sub> ) (Y-Y <sub>0</sub> )
	-150500.000	-39000.000		
6	-150535.148	-39030.700		
60	-150535.055	-39029.304	1076.188500	1029.976992
74	-150534.662	-39028.166	1601.813248	987.359130
73	-150534.791	-39029.606	1543.243306	1618.323172
6	-150535.148	-39030.700	1040.591688	1682.083700
			5261.838742	5317.742994
			平均値=	55.904252
			分散=	27.952126

4 LOT

元/NO. X <sub>0</sub> Y <sub>0</sub>	X	Y	(X-X <sub>0</sub> ) (Y <sub>N-1</sub> -Y <sub>0</sub> )	(X <sub>N-1</sub> -X <sub>0</sub> ) (Y-Y <sub>0</sub> )
	-150500.000	-39000.000		
73	-150534.791	-39029.606		
74	-150534.662	-39028.166	1618.323172	1543.243306
61	-150538.148	-39027.964	1637.796568	1528.568168
62	-150538.278	-39029.412	1629.685992	1710.248976
73	-150534.791	-39029.606	1611.512892	1725.378468
			6497.318624	6507.438918
			平均値=	10.120294
			分散=	5.060147

5 LOT

元/NO. X <sub>0</sub> Y <sub>0</sub>	X	Y	(X-X <sub>0</sub> ) (Y <sub>N-1</sub> -Y <sub>0</sub> )	(X <sub>N-1</sub> -X <sub>0</sub> ) (Y-Y <sub>0</sub> )
	-150500.000	-39000.000		
60	-150535.055	-39029.304		
72	-150534.941	-39027.600	1023.911064	967.518000
70	-150534.510	-39026.464	1504.476000	924.678624
74	-150534.662	-39028.166	1446.575168	1535.328660
60	-150535.055	-39029.304	987.359130	1601.813248
			4962.321362	5029.340532
			平均値=	67.012170
			分散=	23.887553
				33.5/

LOT

FDNO.	X	Y	(X-X <sub>0</sub> )(Y <sub>N-1</sub> -Y <sub>0</sub> )	(X <sub>N-1</sub> -X <sub>0</sub> )(Y-Y <sub>0</sub> )
X <sub>0</sub> Y <sub>0</sub>	-150500.000	-39000.000		
72	-150534.941	-39027.600		
13	-150534.628	-39022.899	955.732800	800.113959
26	-150557.575	-39021.568	1318.409925	746.856704
61	-150558.148	-39027.964	1254.136064	1610.027300
74	-150554.662	-39028.166	1528.568168	1637.796568
70	-150554.510	-39026.464	1535.328660	1446.575168
72	-150534.941	-39027.600	924.678624	1504.476000
			7516.854241	7745.845699
			∑(X-X <sub>0</sub> )(Y <sub>N-1</sub> -Y <sub>0</sub> ) =	228.791458
			∑(X <sub>N-1</sub> -X <sub>0</sub> )(Y-Y <sub>0</sub> ) =	114.495729

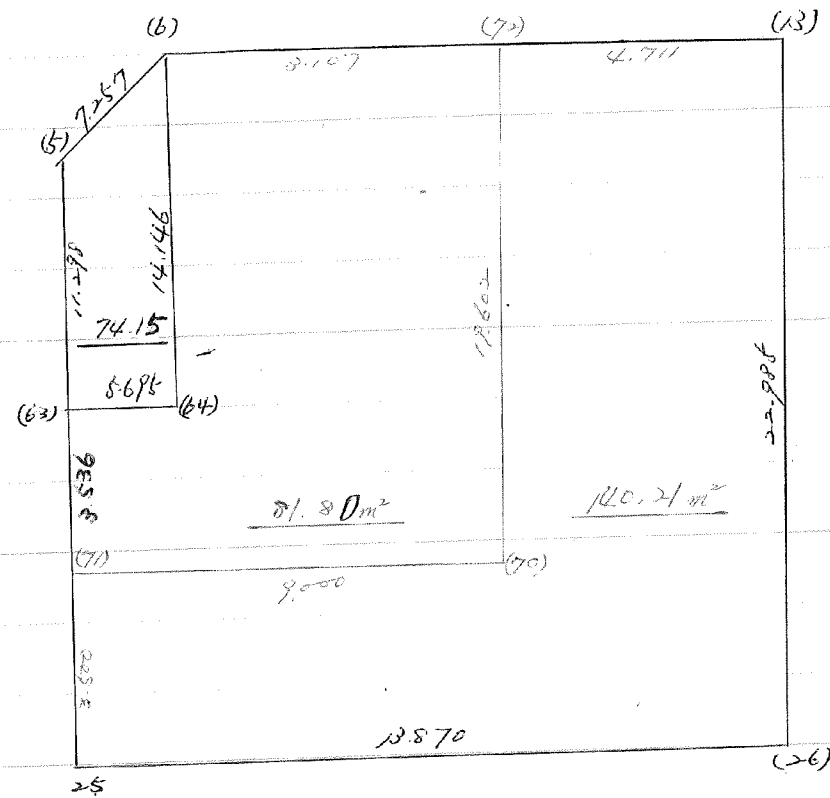


\*\*\*\*\*

ガイノミ	222.027923
ガリソウノミ	222.019621
スミソウノミ	0.000000

\*\*\*\*\*

138 Block



点番(63)(64)は、56年度土地の移動に伴う  
 画地変更計算書参照する。

138 BLOCK

POINT NO.	X	Y	(X-X <sub>0</sub> ) (Y <sub>N-1</sub> -Y <sub>0</sub> )	(X <sub>N-1</sub> -X <sub>0</sub> ) (Y-Y <sub>0</sub> )
X <sub>0</sub> , Y <sub>0</sub> =	-150500.000	-39000.000		
13	-150534.628	-39022.899		
26	-150557.575	-39021.568	1318.409925	746.856704
25	-150558.812	-39035.382	1268.457216	2037.118650
5	-150540.480	-39035.623	1432.263360	2095.059876
6	-150535.148	-39030.700	1252.077204	1242.736000
13	-150534.628	-39022.899	1063.079600	804.854052
			6334.287305	6926.625282
			平均メソセキ=	592.337977
			メソセキ=	296.168989

8.23

9-1 LOT

POINT NO.	X	Y	(X-X <sub>0</sub> ) (Y <sub>N-1</sub> -Y <sub>0</sub> )	(X <sub>N-1</sub> -X <sub>0</sub> ) (Y-Y <sub>0</sub> )
X <sub>0</sub> , Y <sub>0</sub> =	-150500.000	-39000.000		
5	-150540.480	-39035.623		
6	-150535.148	-39030.700	1252.077204	1242.736000
64	-150551.269	-39029.803	1573.958300	1047.515844
63	-150551.777	-39035.475	1543.109931	1818.767775
5	-150540.480	-39035.623	1436.028000	1844.452071
			5805.173435	5953.471690
			平均メソセキ=	148.298255
			メソセキ=	74.149128

556 平均メソセキ  
74.15

9-2 LOT

POINT NO.	X	Y	(X-X <sub>0</sub> ) (Y <sub>N-1</sub> -Y <sub>0</sub> )	(X <sub>N-1</sub> -X <sub>0</sub> ) (Y-Y <sub>0</sub> )
X <sub>0</sub> , Y <sub>0</sub> =	-150500.000	-39000.000		
6	-150535.148	-39030.700		
72	-150534.941	-39027.600	1072.688700	970.084800
70	-150554.510	-39026.464	1504.476000	924.678624
71	-150555.312	-39035.428	1463.776768	1931.180280
63	-150551.777	-39035.475	1834.355556	1962.193200
64	-150551.269	-39029.803	1818.767775	1543.109931
6	-150535.148	-39030.700	1047.515844	1573.958300
			8741.580643	8905.205135
			平均メソセキ=	163.624492
			メソセキ=	81.812246

81.80 平均メソセキ

9-3 LOT

チノNO.	X	Y	(X-X <sub>0</sub> )(Y <sub>N-1</sub> -Y <sub>0</sub> )	(X <sub>N-1</sub> -X <sub>0</sub> )(Y-Y <sub>0</sub> )
X <sub>0</sub> ,Y <sub>0</sub> =	-150500.000	-39000.000		
72	-150534.941	-39027.600	955.732800	800.113959
13	-150534.628	-39022.899	1318.409925	746.856704
26	-150557.575	-39021.568	1268.457216	2037.118650
25	-150558.812	-39035.382	1957.049184	2083.591536
71	-150555.312	-39035.428	1931.180280	1463.776768
70	-150554.510	-39026.464	924.678624	1504.476000
72	-150534.941	-39027.600		
			8355.508029	8635.933617
			メソセキ=	280.425588
			メソセキ=	140.212794

分筆後の座標なし