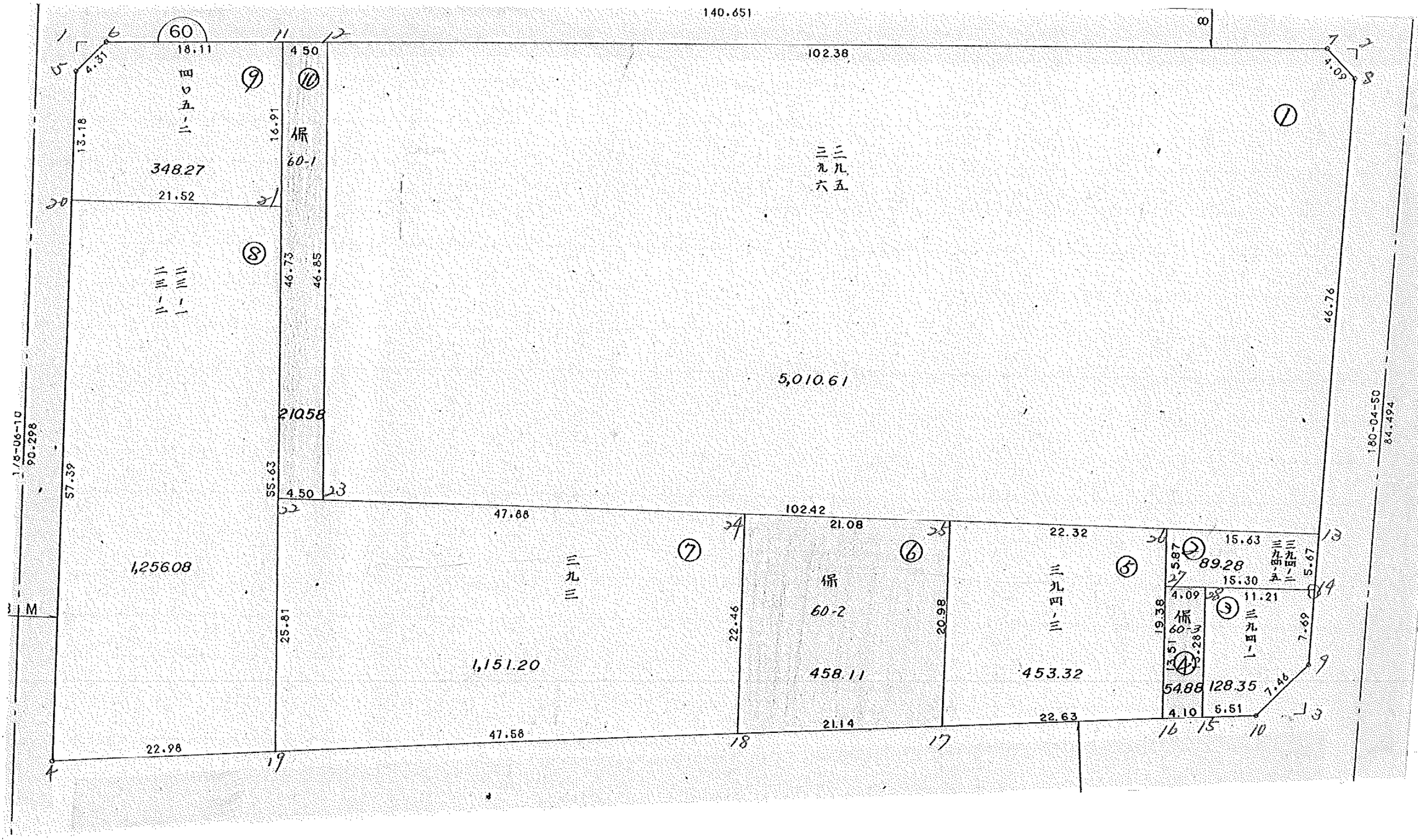
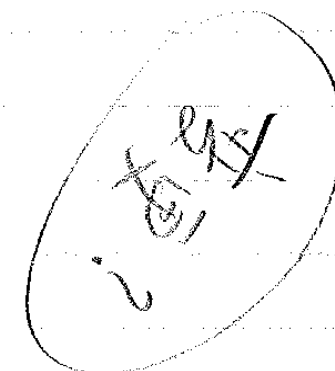


画地確定計算書

BLOCK NO. 60



BLOCK . LOT	KAKUHITSU MENSEKI	SUMIKIRI . SUIRO MENSEKI
60 BLOCK	9160.738835	
1 LOT	5010.597859	
2 LOT	89.263926	
3 LOT	128.387785	
4 LOT	54.832384	
5 LOT	453.088312	
6 LOT	458.395822	
7 LOT	1151.214288	
8 LOT	1256.035744	
9 LOT	348.289239	
10 LOT	210.596272	
1 入三坪		4.496753
2 入三坪		4.489086
3 入三坪		12.420543
TOTAL =	9160.701631	21.406382



60 BLOCK

变更前

TENMEI	X	Y	(X-X0)*(YN-1-Y0)	(XN-1-X0)*(Y-Y0)
X0.Y0	- 150200.000	- 39000.000		
OS60-5	- 150240.130	- 39178.277		
OS60-6	- 150236.925	- 39175.383	+ 6582.878225	+ 7038.119790
OS60-7	- 150228.314	- 39050.684	+ 4965.794262	+ 1871.506700
OS60-8	- 150231.107	- 39047.695	+ 1576.627188	+ 1350.436230
OS60-9	- 150291.250	- 39047.780	+ 4352.168750	+ 1486.292460
OS60-10	- 150296.809	- 39052.756	+ 4625.534020	+ 4813.985000
OS60-4	- 150310.675	- 39175.940	+ 5838.770300	+ 17032.575460
OS60-5	- 150240.130	- 39178.277	+ 7060.472200	+ 19730.806975
			+ 35002.244945	+ 53323.722615
		BAI MENSEKI =	18321.477670	
		MENSEKI =	9160.738835	

1 LOT

TENMEI	X	Y	(X-X0)*(YN-1-Y0)	(XN-1-X0)*(Y-Y0)
X0.Y0	- 150200.000	- 39000.000		
OS60-7	- 150228.314	- 39050.684		
OS60-8	- 150231.107	- 39047.695	+ 1576.627188	+ 1350.436230
OS60-13	- 150277.874	- 39047.761	+ 3714.200430	+ 1485.701427
OS60-23	- 150282.132	- 39149.870	+ 3922.706452	+ 11670.976380
OS60-12	- 150235.383	- 39153.055	+ 5302.850210	+ 12570.713260
OS60-7	- 150228.314	- 39050.684	+ 4333.599270	+ 1793.351972
			+ 18849.983550	+ 28871.179269
		BAI MENSEKI =	10021.195719	
		MENSEKI =	5010.597859	

2 LOT

TENMEI	X	Y	(X-X0)*(YN-1-Y0)	(XN-1-X0)*(Y-Y0)
X0.Y0	- 150200.000	- 39000.000		
OS60-13	- 150277.874	- 39047.761		
OS60-14	- 150283.553	- 39047.769	+ 3990.574833	+ 3719.963106
OS60-27	- 150284.385	- 39063.051	+ 4030.987065	+ 5268.100203
OS60-26	- 150278.525	- 39063.381	+ 4951.079775	+ 5348.405685
OS60-13	- 150277.874	- 39047.761	+ 4935.731994	+ 3750.432525
			+ 17908.373667	+ 18086.901519
		BAI MENSEKI =	178.527852	
		MENSEKI =	89.263926	

3 LOT

TENMEI	X	Y	(X-X0)*(YN-1-Y0)	(XN-1-X0)*(Y-Y0)
X0.Y0	- 150200.000	- 39000.000		
OS60-14	- 150283.553	- 39047.769		
OS60-9	- 150291.250	- 39047.780	+ 4358.921250	+ 3992.162340

* * * * * M E N S E K I K E I S A N * * * * *

TENMEI	X	Y	(X-X0)*(YN-1-Y0)	(XN-1-X0)*(Y-Y0)
OS60-10	- 150296.809	- 39052.756	+ 4625.534020	+ 4813.985000
OS60-15	- 150297.426	- 39058.240	+ 5139.806056	+ 5638.156160
OS60-28	- 150284.162	- 39058.963	+ 4901.594880	+ 5744.529238
OS60-14	- 150283.553	- 39047.769	+ 4926.535539	+ 4020.334578
			+ 23952.391745	+ 24209.167316
		BAI MENSEKI =	256.775571	
		MENSEKI =	128.387785	

4 LOT

TENMEI	X	Y	(X-X0)*(YN-1-Y0)	(XN-1-X0)*(Y-Y0)
X0.Y0	- 150200.000	- 39000.000		
OS60-28	- 150284.162	- 39058.963		
OS60-15	- 150297.426	- 39058.240	+ 5744.529238	+ 4901.594880
OS60-16	- 150297.884	- 39062.310	+ 5700.764160	+ 6070.614060
OS60-27	- 150284.385	- 39063.051	+ 5258.029350	+ 6171.684084
OS60-28	- 150284.162	- 39058.963	+ 5306.498262	+ 4975.592755
			+ 22009.821010	+ 22119.485779
		BAI MENSEKI =	109.664769	
		MENSEKI =	54.832384	

5 LOT

TENMEI	X	Y	(X-X0)*(YN-1-Y0)	(XN-1-X0)*(Y-Y0)
X0.Y0	- 150200.000	- 39000.000		
OS60-26	- 150278.525	- 39063.381		
OS60-27	- 150284.385	- 39063.051	+ 5348.405685	+ 4951.079775
OS60-16	- 150297.884	- 39062.310	+ 6171.684084	+ 5258.029350
OS60-17	- 150300.400	- 39084.666	+ 6255.924000	+ 8287.446744
OS60-25	- 150279.460	- 39035.803	+ 6727.560360	+ 8614.621200
OS60-26	- 150278.525	- 39063.381	+ 6737.680575	+ 5036.254260
			+ 31241.254704	+ 32147.431329
		BAI MENSEKI =	906.176625	
		MENSEKI =	453.088312	

6 LOT

TENMEI	X	Y	(X-X0)*(YN-1-Y0)	(XN-1-X0)*(Y-Y0)
X0.Y0	- 150200.000	- 39000.000		
OS60-25	- 150279.460	- 39035.803		
OS60-17	- 150300.400	- 39084.666	+ 8614.621200	+ 6727.560360
OS60-18	- 150302.781	- 39105.815	+ 8702.056146	+ 10623.826000
OS60-24	- 150280.334	- 39106.759	+ 8500.542210	+ 10972.796779
OS60-25	- 150279.460	- 39035.803	+ 8483.070140	+ 6892.898202
			+ 34300.289696	+ 35217.081341
		BAI MENSEKI =	916.791645	
		MENSEKI =	458.395822	

* * * * * M E N S E K I K E I S A N * * * * *

7 LOT

TENMEI	X	Y	(X-X0)*(YN-1-Y0)	(XN-1-X0)*(Y-Y0)
X0.Y0	- 150200.000	- 39100.000		
OS60-24	- 150280.334	- 39106.759		
OS60-18	- 150302.781	- 39105.815	+ 694.696779	+ 467.142210
OS60-19	- 150308.103	- 39153.099	+ 628.618945	+ 5457.568319
OS60-22	- 150282.329	- 39154.599	+ 4371.587571	+ 5902.315697
OS60-24	- 150280.334	- 39106.759	+ 4386.156066	+ 556.461711
			+ 10081.059361	+ 12383.487937
		BAI MENSEKI =	2302.428576	
		MENSEKI =	1151.214288	

8 LOT

TENMEI	X	Y	(X-X0)*(YN-1-Y0)	(XN-1-X0)*(Y-Y0)
X0.Y0	- 150200.000	- 39100.000		
OS60-21	- 150252.566	- 39156.331		
OS60-19	- 150308.103	- 39153.099	+ 6089.550093	+ 2791.202034
OS60-4	- 150310.675	- 39175.940	+ 5876.731825	+ 8209.341820
OS60-20	- 150253.312	- 39177.840	+ 4048.513280	+ 8614.942000
OS60-21	- 150252.566	- 39156.331	+ 4091.737440	+ 3003.118272
			+ 20106.532638	+ 22618.604126
		BAI MENSEKI =	2512.071488	
		MENSEKI =	1256.035744	

9 LOT

TENMEI	X	Y	(X-X0)*(YN-1-Y0)	(XN-1-X0)*(Y-Y0)
X0.Y0	- 150200.000	- 39100.000		
OS60-11	- 150235.677	- 39157.314		
OS60-21	- 150252.566	- 39156.331	+ 3012.767724	+ 2009.721087
OS60-20	- 150253.312	- 39177.840	+ 3003.118272	+ 4091.737440
OS60-5	- 150240.130	- 39178.277	+ 3123.719200	+ 4173.103424
OS60-6	- 150236.925	- 39175.383	+ 2890.378225	+ 3025.119790
OS60-11	- 150235.677	- 39157.314	+ 2689.439291	+ 2116.319450
			+ 14719.422712	+ 15416.001191
		BAI MENSEKI =	696.578479	
		MENSEKI =	348.289239	

10 LOT

TENMEI	X	Y	(X-X0)*(YN-1-Y0)	(XN-1-X0)*(Y-Y0)
X0.Y0	- 150200.000	- 39100.000		
OS60-12	- 150235.383	- 39153.055		
OS60-23	- 150282.132	- 39149.870	+ 4357.513260	+ 1764.550210

* * * * * M E N S E K I K E I S A N * * * * *

TENMEI	X	Y	(X-X0)*(YN-1-Y0)	(XN-1-X0)*(Y-Y0)
OS60-22	- 150282.329	- 39154.599	+ 4105.747230	+ 4484.325068
OS60-11	- 150235.677	- 39157.314	+ 1947.928523	+ 4718.604306
OS60-12	- 150235.383	- 39153.055	+ 2027.941262	+ 1892.843235
			+ 12439.130275	+ 12860.322819
		BAI MENSEKI =	421.192544	
		MENSEKI =	210.596272	

1 入三キリ

TENMEI	X	Y	(X-X0)*(YN-1-Y0)	(XN-1-X0)*(Y-Y0)
X0.Y0	- 150200.000	- 39100.000		
OS60-1	- 150237.132	- 39178.376		
OS60-5	- 150240.130	- 39178.277	+ 3145.228880	+ 2906.581564
OS60-6	- 150236.925	- 39175.383	+ 2890.378225	+ 3025.119790
OS60-1	- 150237.132	- 39178.376	+ 2799.121556	+ 2894.033800
			+ 8834.728661	+ 8825.735154
		BAI MENSEKI =	8.993507	
		MENSEKI =	4.496753	

2 入三キリ

TENMEI	X	Y	(X-X0)*(YN-1-Y0)	(XN-1-X0)*(Y-Y0)
X0.Y0	- 150200.000	- 39000.000		
OS60-2	- 150228.107	- 39047.691		
OS60-7	- 150228.314	- 39050.684	+ 1350.322974	+ 1424.575188
OS60-8	- 150231.107	- 39047.695	+ 1576.627188	+ 1350.436230
OS60-2	- 150228.107	- 39047.691	+ 1340.563365	+ 1483.523937
			+ 4267.513527	+ 4258.535355
		BAI MENSEKI =	8.978172	
		MENSEKI =	4.489086	

3 入三キリ

TENMEI	X	Y	(X-X0)*(YN-1-Y0)	(XN-1-X0)*(Y-Y0)
X0.Y0	- 150200.000	- 39000.000		
OS60-3	- 150296.250	- 39047.787		
OS60-9	- 150291.250	- 39047.780	+ 4360.563750	+ 4598.825000
OS60-10	- 150296.809	- 39052.756	+ 4625.534020	+ 4813.985000
OS60-3	- 150296.250	- 39047.787	+ 5077.765000	+ 4626.211683
			+ 14063.862770	+ 14039.021683
		BAI MENSEKI =	24.841087	
		MENSEKI =	12.420543	

1 LOT

元NO. X。Y。	X	Y	(X-X ₀) (YN-1-Y ₀)	(XN-1-X ₀) (Y-Y ₀)
	-150200.000	-39000.000		
7	-150228.314	-39050.684		
8	-150231.107	-39047.695	1576.627188	1350.436230
13	-150277.874	-39047.761	3714.200430	1485.701427
23	-150282.142	-39150.101	3923.184062	11688.965274
12	-150235.367	-39152.824	5308.622067	12553.269008
7	-150228.314	-39050.684	4327.058736	1792.541028
			18849.692483	28870.912967
			平均偏差=	10021.220484
			最大偏差=	5010.610242

2 LOT

元NO. X。Y。	X	Y	(X-X ₀) (YN-1-Y ₀)	(XN-1-X ₀) (Y-Y ₀)
	-150200.000	-39000.000		
13	-150277.874	-39047.761		
14	-150283.553	-39047.769	3990.574833	3719.963106
27	-150284.387	-39063.056	4031.082603	5268.517968
26	-150278.526	-39063.381	4951.535456	5348.532447
13	-150277.874	-39047.761	4935.731994	3750.480286
			17908.924886	18087.493807
			平均偏差=	178.568921
			最大偏差=	89.284460

3 LOT

元NO. X。Y。	X	Y	(X-X ₀) (YN-1-Y ₀)	(XN-1-X ₀) (Y-Y ₀)
	-150200.000	-39000.000		
14	-150283.553	-39047.769		
9	-150291.250	-39047.780	4358.921250	3992.162340
10	-150296.809	-39052.756	4625.534020	4813.985000
15	-150297.426	-39058.233	5139.806056	5637.478497
28	-150284.164	-39058.966	4901.122212	5744.821516
14	-150283.553	-39047.769	4926.786198	4020.430116
			23952.169736	24208.877469
			平均偏差=	256.707733
			最大偏差=	128.353866

4 LOT

元NO. X.Y.	X	Y	(X-X.) (YN-1-Y.)	(XN-1-X.) (Y-Y.)
28	-150200.000	-39000.000		
15	-150284.164	-39058.966		
16	-150297.424	-39058.233	5744.821516	4901.122212
27	-150297.885	-39062.309	5700.137205	6070.516634
28	-150284.387	-39063.056	5258.069583	6172.236560
28	-150284.164	-39058.966	5307.045184	4975.963842
			22010.073488	22119.839248
			平均値=	109.765760
			分散=	54.882880

5 LOT

元NO. X.Y.	X	Y	(X-X.) (YN-1-Y.)	(XN-1-X.) (Y-Y.)
26	-150200.000	-39000.000		
16	-150278.526	-39063.381		
17	-150297.885	-39062.309	6204.049185	4892.876534
25	-150300.417	-39084.806	6256.882853	8301.235310
26	-150279.456	-39085.689	6738.345536	8604.632313
26	-150278.526	-39063.381	6728.814414	5036.000736
			25928.091988	26834.744893
			平均値=	906.652905
			分散=	453.326452

6 LOT

元NO. X.Y.	X	Y	(X-X.) (YN-1-Y.)	(XN-1-X.) (Y-Y.)
25	-150200.000	-39000.000		
17	-150279.456	-39085.689		
18	-150300.417	-39084.806	8604.632313	6738.345536
24	-150302.782	-39105.814	8716.530292	10625.524438
25	-150280.335	-39106.759	8500.567690	10972.903538
25	-150279.456	-39085.689	8482.643104	6883.825815
			34304.373399	35220.599327
			平均値=	916.225928
			分散=	458.112964

7 LOT

元NO. X.Y.	X	Y	(X-X.) (YN-1-Y.)	(XN-1-X.) (Y-Y.)
24	-150200.000	-39100.000		
24	-150280.335	-39106.759		

18	-150302.782	-39105.814	694.703538	467.067690
19	-150308.104	-39153.098	628.516656	5457.518636
22	-150282.330	-39154.598	4371.558340	5902.262192
24	-150280.335	-39106.759	4386.130330	556.468470

10080.908864	12383.316988
ハ イセキ=	2302.408124
ノセキ=	1151.204062

8 LOT

子NO. X。Y。	X	Y	(X-X ₀)(YN-1-Y ₀)	(XN-1-X ₀)(Y-Y ₀)
	-150200.000	-39100.000		
21	-150252.566	-39156.331		
19	-150308.104	-39153.098	6089.606424	2791.149468
4	-150310.675	-39175.940	5876.621150	8209.417760
20	-150253.311	-39177.840	4048.437340	8614.942000
21	-150252.566	-39156.331	4091.737440	3003.061941

20106.402354	22618.571169
ハ イセキ=	2512.168815
ノセキ=	1256.084407

9 LOT

子NO. X。Y。	X	Y	(X-X ₀)(YN-1-Y ₀)	(XN-1-X ₀)(Y-Y ₀)
	-150200.000	-39100.000		
11	-150235.677	-39157.314		
21	-150252.566	-39156.331	3012.767724	2009.721087
20	-150253.311	-39177.840	3003.061941	4091.737440
5	-150240.130	-39178.277	3123.719200	4173.025147
6	-150236.925	-39175.383	2890.378225	3025.119790
11	-150235.677	-39157.314	2689.439291	2116.319450

14719.366381	15415.922914
ハ イセキ=	696.556533
ノセキ=	348.278266

10 LOT

子NO. X。Y。	X	Y	(X-X ₀)(YN-1-Y ₀)	(XN-1-X ₀)(Y-Y ₀)
	-150200.000	-39100.000		
12	-150235.367	-39152.824		
23	-150282.142	-39150.101	4339.069008	1771.922067
22	-150282.330	-39154.598	4124.815330	4484.788916
11	-150235.677	-39157.314	1947.892846	4718.661620

12	-150235.367	-39152.824	2027.024238	1884.601848
			12438.801422	12859.974451
			ノイノセキ=	421.173029
			ノセキ=	210.586514

ノイノセキ=	0.000000
ノセキ=	9160.724116
ノセキ=	0.000000
