

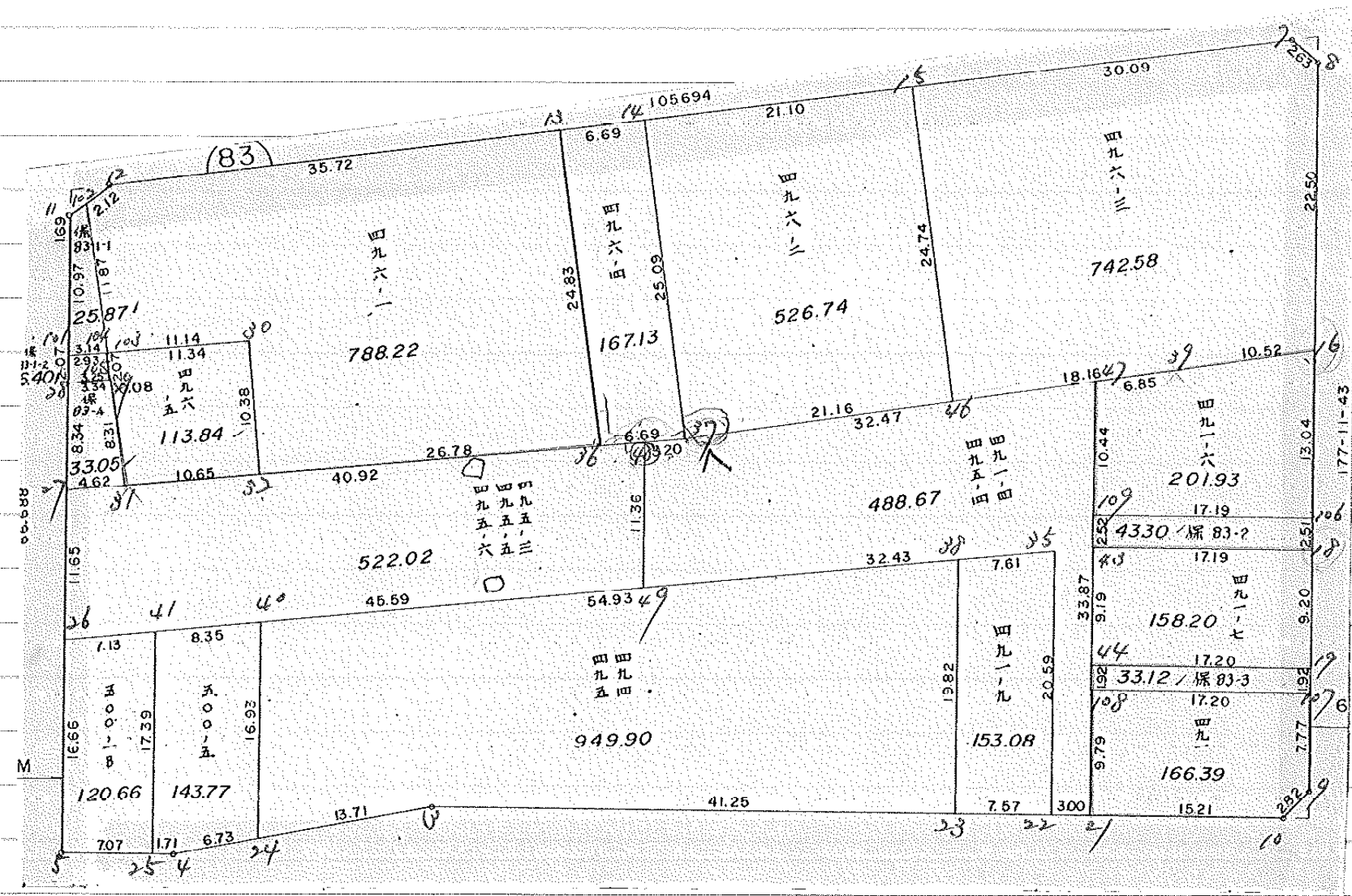
面地確定計算書

BLOCK NO. 83

57

確定以後変更

保留地変更 158.1



* * * * * KAKUHITSU MENSEKI KESAN-SHO * * * * *

BLOCK . . . LOT KAKUHITSU MENSEKI SUMIKIRI .SUIRO MENSEKI

83 BLOCK ~~5387.950202~~ 5384.976726

1 LOT	742.581401	
2 LOT	202.058952	
3 LOT	43.178126	
4 LOT	158.203545	
5 LOT	33.018939	
6 LOT	166.502470	
7 LOT	488.678120	
8 LOT	153.086908	
9 LOT	949.907657	
10 LOT	143.776466	
11 LOT	120.664449	
12 LOT	522.025984	
13 LOT	33.052955	
14 LOT ✓	31.031559 ✓	14-1 & 14
15 LOT	113.659155	
16 LOT	789.656282	
17 LOT	167.132691	
18 LOT	526.746619	
6 刈り	2.973476	2.973476
1 刈り		1.982722
2 刈り		2.000559
TOTAL =	5384.962278 5387.935754	6.956757 3.983284

1537 289260

97
71

* * * * * M E N S E K I K E I S A N * * * * *

83 BLOCK

TENMEI	X	Y	(X-X0)*(YN-1-Y0)	(XN-1-X0)*(Y-Y0)
X0.Y0	- 149800.000	- 38600.000		
OS83-7	- 149866.795	- 38640.965		
OS83-8	- 149868.432	- 38638.900	+ 2803.316880	+ 2598.325500
OS83-9	- 149925.341	- 38636.113	+ 4875.764900	+ 2471.284816
OS83-10	- 149927.432	- 38638.013	+ 4601.951816	+ 4764.587433
OS83-3	- 149930.564	- 38704.978	+ 4963.129332	+ 13377.556496
OS83-4	- 149935.475	- 38724.822	+ 14221.894550	+ 16297.259608
OS83-5	- 149935.883	- 38733.598	+ 16961.187826	+ 18099.189050
OS83-6	- 149884.227	- 38736.017	+ 11252.558746	+ 18482.398011
OS83-7	- 149866.795	- 38640.965	+ 9085.255515	+ 3450.359055
			+ 68765.059565	+ 79540.959969
		BAI MENSEKI =	10775.900404	
		MENSEKI =	5387.950202	6 PRA. = 5384.976726

1 LOT

TENMEI	X	Y	(X-X0)*(YN-1-Y0)	(XN-1-X0)*(Y-Y0)
X0.Y0	- 149800.000	- 38600.000		
OS83-7	- 149866.795	- 38640.965		
OS83-8	- 149868.432	- 38638.900	+ 2803.316880	+ 2598.325500
OS83-16	- 149890.907	- 38637.799	+ 3536.282300	+ 2586.661168
OS83-39	- 149892.964	- 38648.117	+ 3513.946236	+ 4374.172119
OS83-47	- 149894.311	- 38654.839	+ 4537.962387	+ 5098.052796
OS83-46	- 149896.533	- 38665.918	+ 5293.773187	+ 6216.792498
OS83-15	- 149872.225	- 38670.572	+ 4760.927550	+ 6812.526876
OS83-7	- 149866.795	- 38640.965	+ 4713.856740	+ 2958.697125
			+ 29160.065280	+ 30645.228082
		BAI MENSEKI =	1485.162802	
		MENSEKI =	742.581401	

2 LOT

TENMEI	X	Y	(X-X0)*(YN-1-Y0)	(XN-1-X0)*(Y-Y0)
X0.Y0	- 149800.000	- 38600.000		
OS83-16	- 149890.907	- 38637.799		
OS83-17	- 149903.946	- 38637.160	+ 3929.054854	+ 3378.104120
OS83-42	- 149904.749	- 38654.336	+ 3892.472840	+ 5648.009856
OS83-47	- 149894.311	- 38654.839	+ 5124.482496	+ 5744.330411
OS83-39	- 149892.964	- 38648.117	+ 5098.052796	+ 4537.962387
OS83-16	- 149890.907	- 38637.799	+ 4374.172119	+ 3513.946236
			+ 22418.235105	+ 22822.353010
		BAI MENSEKI =	404.117905	
		MENSEKI =	202.058952	

* * * * * M E N S E K I K E I S A N * * * * *

3 LOT

TENMEI	X	Y	(X-X0)*(YN-1-Y0)	(XN-1-X0)*(Y-Y0)
X0.Y0	- 149900.000	- 38600.000		
OS83-17	- 149903.946	- 38637.160		
OS83-18	- 149906.452	- 38637.037	+ 239.756320	+ 146.148002
OS83-43	- 149907.259	- 38654.215	+ 268.851583	+ 349.795180
OS83-42	- 149904.749	- 38654.336	+ 257.467035	+ 394.425024
OS83-17	- 149903.946	- 38637.160	+ 214.409856	+ 176.472840
			+ 980.484794	+ 1066.841046
		BAI MENSEKI =	86.356252	
		MENSEKI =	43.178126	

4 LOT

TENMEI	X	Y	(X-X0)*(YN-1-Y0)	(XN-1-X0)*(Y-Y0)
X0.Y0	- 149900.000	- 38600.000		
OS83-18	- 149906.452	- 38637.037		
OS83-19	- 149915.648	- 38636.586	+ 579.554976	+ 236.052872
OS83-44	- 149916.437	- 38653.771	+ 601.364082	+ 841.408608
OS83-43	- 149907.259	- 38654.215	+ 390.323689	+ 891.131955
OS83-18	- 149906.452	- 38637.037	+ 349.795180	+ 268.851583
			+ 1921.037927	+ 2237.445018
		BAI MENSEKI =	316.407091	
		MENSEKI =	158.203545	

5 LOT

TENMEI	X	Y	(X-X0)*(YN-1-Y0)	(XN-1-X0)*(Y-Y0)
X0.Y0	- 149900.000	- 38600.000		
OS83-19	- 149915.648	- 38636.586		
OS83-20	- 149917.565	- 38636.492	+ 642.633090	+ 571.026816
OS83-45	- 149918.354	- 38653.679	+ 669.774168	+ 942.871635
OS83-44	- 149916.437	- 38653.771	+ 882.321723	+ 986.912934
OS83-19	- 149915.648	- 38636.586	+ 841.408608	+ 601.364082
			+ 3036.137589	+ 3102.175467
		BAI MENSEKI =	66.037878	
		MENSEKI =	33.018939	

6 LOT

TENMEI	X	Y	(X-X0)*(YN-1-Y0)	(XN-1-X0)*(Y-Y0)
X0.Y0	- 149900.000	- 38600.000		
OS83-20	- 149917.565	- 38636.492		
OS83-9	- 149925.341	- 38636.113	+ 924.743772	+ 634.324845
OS83-10	- 149927.432	- 38638.013	+ 990.651816	+ 963.287433

* * * * * M E N S E K I K E I S A N * * * * *

TENMEI	X	Y	(X-X0)*(YN-1-Y0)	(XN-1-X0)*(Y-Y0)
OS83-21	- 149928.142	- 38653.207	+ 1069.761846	+ 1459.574424
OS83-45	- 149918.354	- 38653.679	+ 976.561278	+ 1510.634418
OS83-20	- 149917.565	- 38636.492	+ 942.871635	+ 669.774168
			+ 4904.590347	+ 5237.595288
		BAI MENSEKI =	333.004941	
		MENSEKI =	166.502470	

7 LOT

TENMEI	X	Y	(X-X0)*(YN-1-Y0)	(XN-1-X0)*(Y-Y0)
X0.Y0	- 149800.000	- 38600.000		
OS83-21	- 149928.142	- 38653.207		
OS83-22	- 149928.282	- 38656.205	+ 6825.500374	+ 7202.221110
OS83-35	- 149907.708	- 38657.197	+ 6053.728140	+ 7337.345554
OS83-38	- 149908.832	- 38664.727	+ 6224.863904	+ 6971.615716
OS83-49	- 149912.498	- 38689.281	+ 7281.658046	+ 9716.629792
OS83-48	- 149901.146	- 38689.844	+ 9030.416026	+ 10107.270312
OS83-37	- 149900.692	- 38686.667	+ 9046.572048	+ 8766.020382
OS83-46	- 149896.533	- 38665.918	+ 8366.225511	+ 6637.415256
OS83-47	- 149894.311	- 38654.839	+ 6216.792498	+ 5293.773187
OS83-42	- 149904.749	- 38654.336	+ 5744.330411	+ 5124.482496
OS83-43	- 149907.259	- 38654.215	+ 5828.025024	+ 5678.967035
OS83-44	- 149916.437	- 38653.771	+ 6312.631955	+ 5767.423689
OS83-45	- 149918.354	- 38653.679	+ 6364.012934	+ 6250.221723
OS83-21	- 149928.142	- 38653.207	+ 6878.534418	+ 6297.261278
			+ 90173.291289	+ 91150.647529
		BAI MENSEKI =	977.356240	
		MENSEKI =	488.678120	

8 LOT

TENMEI	X	Y	(X-X0)*(YN-1-Y0)	(XN-1-X0)*(Y-Y0)
X0.Y0	- 149900.000	- 38600.000		
OS83-22	- 149928.282	- 38656.205		
OS83-23	- 149928.636	- 38663.769	+ 1609.486380	+ 1803.514858
OS83-38	- 149908.832	- 38664.727	+ 563.207808	+ 1853.522372
OS83-35	- 149907.708	- 38657.197	+ 498.915716	+ 505.163904
OS83-22	- 149928.282	- 38656.205	+ 1617.645554	+ 433.228140
			+ 4289.255458	+ 4595.429274
		BAI MENSEKI =	306.173816	
		MENSEKI =	153.086908	

9 LOT

TENMEI	X	Y	(X-X0)*(YN-1-Y0)	(XN-1-X0)*(Y-Y0)
X0.Y0	- 149900.000	- 38600.000		
OS83-23	- 149928.636	- 38663.769		
OS83-3	- 149930.564	- 38704.978	+ 1949.035716	+ 3006.150008

* * * * * M E N S E K I K E I S A N * * * * *

TENMEI	X	Y	(X-X0)*(YN-1-Y0)	(XN-1-X0)*(Y-Y0)
OS83-24	- 149933.857	- 38718.286	+ 3554.240146	+ 3615.293304
OS83-40	- 149916.945	- 38719.061	+ 2004.356270	+ 4031.048277
OS83-49	- 149912.498	- 38689.281	+ 1488.024378	+ 1512.866545
OS83-38	- 149908.832	- 38664.727	+ 788.529792	+ 808.958046
OS83-23	- 149928.636	- 38663.769	+ 1853.522372	+ 563.207808
			+ 11637.708674	+ 13537.523988
		BAI MENSEKI =	1899.815314	
		MENSEKI =	949.907657	

10 LOT

TENMEI	X	Y	(X-X0)*(YN-1-Y0)	(XN-1-X0)*(Y-Y0)
X0.Y0	- 149900.000	- 38700.000		
OS83-24	- 149933.857	- 38718.286		
OS83-4	- 149935.475	- 38724.822	+ 648.695850	+ 840.398454
OS83-25	- 149935.554	- 38726.530	+ 882.521388	+ 941.151750
OS83-41	- 149918.179	- 38727.325	+ 482.288870	+ 971.513050
OS83-40	- 149916.945	- 38719.061	+ 463.022125	+ 346.509919
OS83-24	- 149933.857	- 38718.286	+ 645.348277	+ 309.856270
			+ 3121.876510	+ 3409.429443
		BAI MENSEKI =	287.552933	
		MENSEKI =	143.776466	

11 LOT

TENMEI	X	Y	(X-X0)*(YN-1-Y0)	(XN-1-X0)*(Y-Y0)
X0.Y0	- 149900.000	- 38700.000		
OS83-25	- 149935.554	- 38726.530		
OS83-5	- 149935.883	- 38733.598	+ 951.975990	+ 1194.543292
OS83-26	- 149919.232	- 38734.378	+ 646.156736	+ 1233.585774
OS83-41	- 149918.179	- 38727.325	+ 624.957662	+ 525.514400
OS83-25	- 149935.554	- 38726.530	+ 971.513050	+ 482.288870
			+ 3194.603438	+ 3435.932336
		BAI MENSEKI =	241.328898	
		MENSEKI =	120.664449	

12 LOT

TENMEI	X	Y	(X-X0)*(YN-1-Y0)	(XN-1-X0)*(Y-Y0)
X0.Y0	- 149900.000	- 38600.000		
OS83-26	- 149919.232	- 38734.378		
OS83-27	- 149907.594	- 38734.923	+ 1020.466532	+ 2594.839136
OS83-31	- 149906.935	- 38730.346	+ 935.691005	+ 989.847524
OS83-32	- 149905.429	- 38719.806	+ 707.648434	+ 830.854610
OS83-36	- 149901.640	- 38693.298	+ 196.481840	+ 506.514842

* * * * * M E N S E K I K E I S A N * * * * *

TENMEI	X	Y	(X-X0)*(YN-1-Y0)	(XN-1-X0)*(Y-Y0)
OS83-48	- 149901.146	- 38689.844	+ 106.919508	+ 147.344160
OS83-49	- 149912.498	- 38689.281	+ 1122.870312	+ 102.316026
OS83-40	- 149916.945	- 38719.061	+ 1512.866545	+ 1488.024378
OS83-41	- 149918.179	- 38727.325	+ 2164.409919	+ 2157.522125
OS83-26	- 149919.232	- 38734.378	+ 2448.714400	+ 2442.857662
			+ 10216.068495	+ 11260.120463
		BAI MENSEKI =	1044.051968	
		MENSEKI =	522.025984	

13 LOT

TENMEI	X	Y	(X-X0)*(YN-1-Y0)	(XN-1-X0)*(Y-Y0)
X0.Y0	- 149800.000	- 38700.000		
OS83-27	- 149907.594	- 38734.923		
OS83-28	- 149899.259	- 38735.313	+ 3466.422057	+ 3799.466922
OS83-29	- 149898.796	- 38732.004	+ 3488.783148	+ 3176.685036
OS83-31	- 149906.935	- 38730.346	+ 3422.347740	+ 2998.063416
OS83-27	- 149907.594	- 38734.923	+ 3265.047524	+ 3734.491005
			+ 13642.600469	+ 13708.706379
		BAI MENSEKI =	66.105910	
		MENSEKI =	33.052955	

14 LOT

TENMEI	X	Y	(X-X0)*(YN-1-Y0)	(XN-1-X0)*(Y-Y0)
X0.Y0	- 149800.000	- 38700.000		
OS83-28	- 149899.259	- 38735.313		
OS83-11	- 149886.225	- 38735.923	+ 3044.863425	+ 3565.681057
OS83-100	- 149885.190	- 38734.758	+ 3060.280370	+ 2997.008550
OS83-33	- 149896.759	- 38732.420	+ 3363.149322	+ 2761.859800
OS83-29	- 149898.796	- 38732.004	+ 3202.966320	+ 3096.675036
OS83-28	- 149899.259	- 38735.313	+ 3176.685036	+ 3488.783148
			+ 15847.944473	+ 15910.007591
		BAI MENSEKI =	62.063118	
		MENSEKI =	31.031559	

15 LOT

TENMEI	X	Y	(X-X0)*(YN-1-Y0)	(XN-1-X0)*(Y-Y0)
X0.Y0	- 149800.000	- 38700.000		
OS83-30	- 149895.148	- 38721.275		
OS83-32	- 149905.429	- 38719.806	+ 2243.001975	+ 1884.501288
OS83-31	- 149906.935	- 38730.346	+ 2117.954610	+ 3199.348434
OS83-29	- 149898.796	- 38732.004	+ 2998.063416	+ 3422.347740
OS83-33	- 149896.759	- 38732.420	+ 3096.675036	+ 3202.966320

* * * * * M E N S E K I K E I S A N * * * * *

TENMEI	X	Y	(X-X0)*(YN-1-Y0)	(XN-1-X0)*(Y-Y0)
OS83-30	- 149895.148	- 38721.275	+ 3084.698160	+ 2058.547725
			+ 13540.393197	+ 13767.711507
		BAI MENSEKI =	227.318310	
		MENSEKI =	113.659155	

16 LOT

TENMEI	X	Y	(X-X0)*(YN-1-Y0)	(XN-1-X0)*(Y-Y0)
X0.Y0	- 149800.000	- 38600.000		
OS83-12	- 149883.686	- 38733.066		
OS83-13	- 149877.241	- 38697.923	+ 10278.150906	+ 8194.784178
OS83-36	- 149901.640	- 38693.298	+ 9952.893720	+ 7206.430818
OS83-32	- 149905.429	- 38719.806	+ 9836.314842	+ 12177.081840
OS83-30	- 149895.148	- 38721.275	+ 11399.301288	+ 12785.901975
OS83-33	- 149896.759	- 38732.420	+ 11734.447725	+ 12599.498160
OS83-100	- 149885.190	- 38734.758	+ 11280.859800	+ 13039.049322
OS83-12	- 149883.686	- 38733.066	+ 11277.357988	+ 11335.892540
			+ 75759.326269	+ 77338.638833
		BAI MENSEKI =	1579.312564	
		MENSEKI =	789.656282	

17 LOT

TENMEI	X	Y	(X-X0)*(YN-1-Y0)	(XN-1-X0)*(Y-Y0)
X0.Y0	- 149800.000	- 38600.000		
OS83-13	- 149877.241	- 38697.923		
OS83-14	- 149876.033	- 38691.335	+ 7445.379459	+ 7054.806735
OS83-37	- 149900.692	- 38686.667	+ 9196.703820	+ 6589.552011
OS83-48	- 149901.146	- 38689.844	+ 8766.020382	+ 9046.572048
OS83-36	- 149901.640	- 38693.298	+ 9131.744160	+ 9436.719508
OS83-13	- 149877.241	- 38697.923	+ 7206.430818	+ 9952.893720
			+ 41746.278639	+ 42080.544022
		BAI MENSEKI =	334.265383	
		MENSEKI =	167.132691	

18 LOT

TENMEI	X	Y	(X-X0)*(YN-1-Y0)	(XN-1-X0)*(Y-Y0)
X0.Y0	- 149800.000	- 38600.000		
OS83-14	- 149876.033	- 38691.335		
OS83-15	- 149872.225	- 38670.572	+ 6596.670375	+ 5365.800876
OS83-46	- 149896.533	- 38665.918	+ 6812.526876	+ 4760.927550
OS83-37	- 149900.692	- 38686.667	+ 6637.415256	+ 8366.225511
OS83-14	- 149876.033	- 38691.335	+ 6589.552011	+ 9196.703820
			+ 26636.164518	+ 27689.657757
		BAI MENSEKI =	1053.493239	
		MENSEKI =	526.746619	

* * * * * M E N S E K I K E I S A N * * * * *

6 入替り

TENMEI	X	Y	(X-X0)*(YN-1-Y0)	(XN-1-X0)*(Y-Y0)
X0.Y0	- 149800.000	- 38700.000		
OS83-6	- 149884.227	- 38736.017		
OS83-11	- 149886.225	- 38735.923	+ 3105.565825	+ 3025.686521
OS83-12	- 149883.686	- 38733.066	+ 3006.252178	+ 2851.115850
OS83-6	- 149884.227	- 38736.017	+ 2785.049982	+ 3014.118662
			+ 8896.867985	+ 8890.921033
		BAI MENSEKI =	5.946952	
		MENSEKI =	2.973476	

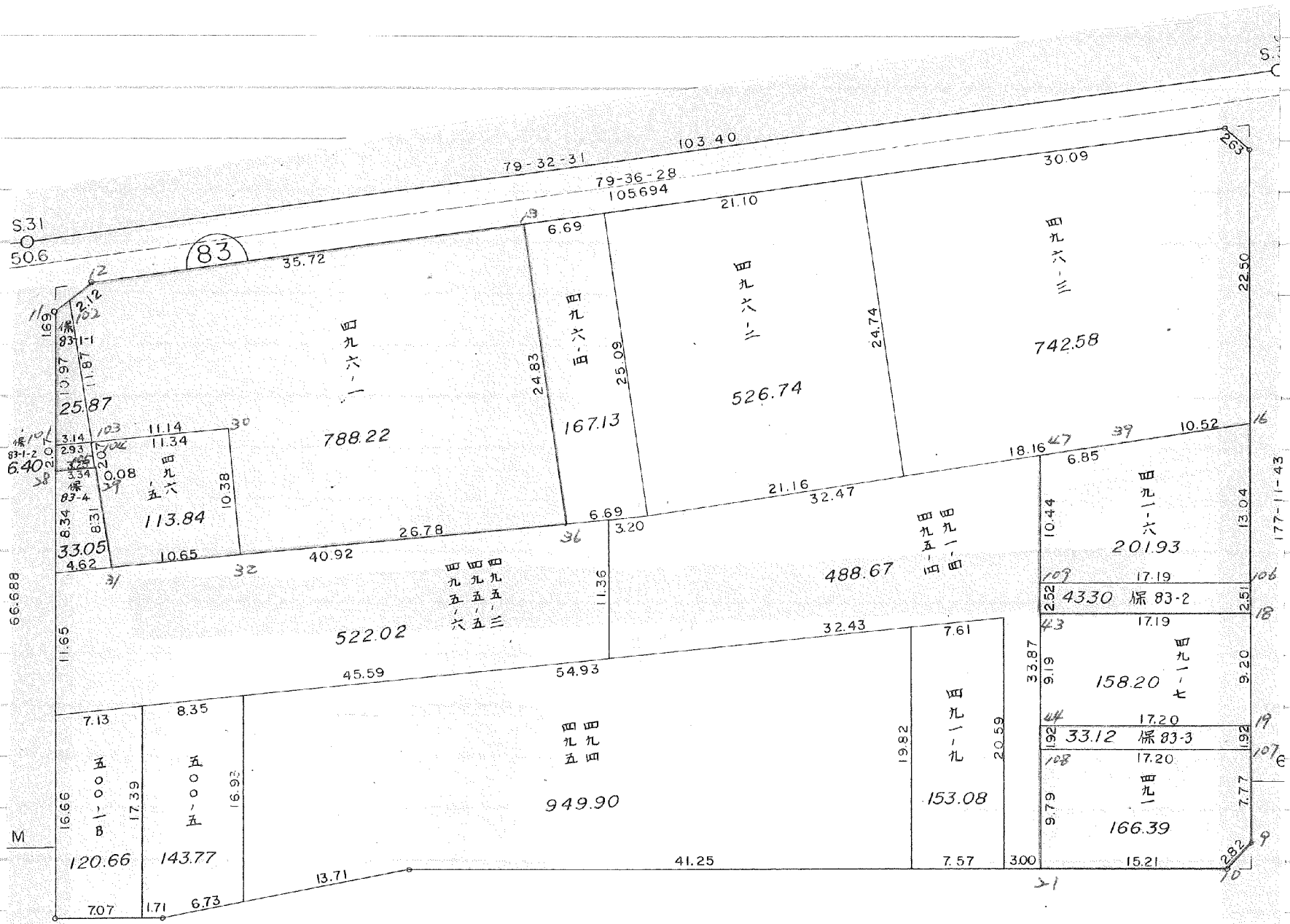
1 入替り

TENMEI	X	Y	(X-X0)*(YN-1-Y0)	(XN-1-X0)*(Y-Y0)
X0.Y0	- 149800.000	- 38600.000		
OS83-1	- 149866.434	- 38638.998		
OS83-7	- 149866.795	- 38640.965	+ 2604.871410	+ 2721.468810
OS83-8	- 149868.432	- 38638.900	+ 2803.316880	+ 2598.325500
OS83-1	- 149866.434	- 38638.998	+ 2584.282600	+ 2668.711136
			+ 7992.470890	+ 7988.505446
		BAI MENSEKI =	3.965444	
		MENSEKI =	1.982722	

2 入替り

TENMEI	X	Y	(X-X0)*(YN-1-Y0)	(XN-1-X0)*(Y-Y0)
X0.Y0	- 149900.000	- 38600.000		
OS83-2	- 149927.339	- 38636.015		
OS83-9	- 149925.341	- 38636.113	+ 912.656115	+ 987.293307
OS83-10	- 149927.432	- 38638.013	+ 990.651816	+ 963.287433
OS83-2	- 149927.339	- 38636.015	+ 1039.237407	+ 987.963480
			+ 2942.545338	+ 2938.544220
		BAI MENSEKI =	4.001118	
		MENSEKI =	2.000559	

確定以後変更



14 LOT

元NO. X _o Y _o	X	Y	(X-X _o)(Y _{N-1} -Y _o)	(X _{N-1} -X _o)(Y-Y _o)
	-149800.000	-38700.000		
104	-149896.771	-38732.506		
105	-149898.808	-38732.089	3211.852848	3105.284619
28	-149899.259	-38735.313	3185.122051	3489.206904
101	-149897.191	-38735.410	3432.105783	3514.761190
104	-149896.771	-38732.506	3426.661110	3159.290646
			13255.741792	13268.543359
			平均値=	12.801567
			分散値=	6.400783

14 LOT

元NO. X _o Y _o	X	Y	(X-X _o)(Y _{N-1} -Y _o)	(X _{N-1} -X _o)(Y-Y _o)
	-149800.000	-38700.000		
11	-149886.225	-38735.923		
102	-149885.097	-38734.654	3056.939531	2988.041150
103	-149896.741	-38732.301	3352.462614	2748.718197
104	-149896.771	-38732.506	3125.800071	3144.662946
101	-149897.191	-38735.410	3159.290646	3426.661110
11	-149886.225	-38735.923	3053.227250	3491.392293
			15747.720112	15799.475696
			平均値=	51.755584
			分散値=	25.877792

15 LOT

元NO. X _o Y _o	X	Y	(X-X _o)(Y _{N-1} -Y _o)	(X _{N-1} -X _o)(Y-Y _o)
	-149800.000	-38700.000		
30	-149895.148	-38721.275		
32	-149905.429	-38719.806	2243.001975	1884.501288
31	-149906.935	-38730.346	2117.954610	3199.348434
29	-149898.796	-38732.004	2998.063416	3422.347740
105	-149898.808	-38732.089	3162.251232	3170.264844
104	-149896.771	-38732.506	3105.284619	3211.852848
103	-149896.741	-38732.301	3144.662946	3125.800071
30	-149895.148	-38721.275	3073.375548	2058.164775
			19844.594346	20072.280000
			平均値=	227.685654
			分散値=	113.842827

16 LOT

元NO. X ₀ Y ₀	X	Y	(X-X ₀)(Y _{N-1} -Y ₀)	(X _{N-1} -X ₀)(Y-Y ₀)
	-149800.000	-38600.000		
13	-149877.241	-38697.923		
36	-149901.640	-38693.298	9952.893720	7206.430818
32	-149905.429	-38719.806	9836.314842	12177.081840
30	-149895.148	-38721.275	11399.301288	12785.901975
103	-149896.741	-38732.301	11732.264775	12588.175548
102	-149885.097	-38734.654	11258.418197	13026.562614
12	-149883.686	-38733.066	11268.654644	11323.517402
13	-149877.241	-38697.923	10278.150906	8194.784178
			75725.998372	77302.454375
			平均メソセキ=	1576.456003
			メソセキ=	788.228001

2 LOT

テ/NO.	X	Y	(X-X _o)(Y _{N-1} -Y _o)	(X _{N-1} -X _o)(Y-Y _o)
X _o Y _o	-149800.000	-38600.000		
16	-149890.907	-38637.799		
106	-149903.939	-38637.160	3928.790261	3378.104120
109	-149904.741	-38654.336	3892.175560	5647.629504
47	-149894.311	-38654.839	5124.482496	5743.891699
39	-149892.964	-38648.117	5098.052796	4537.962387
16	-149890.907	-38637.799	4374.172119	3513.946236
			22417.673232	22821.533946
			ハ イメセキ=	403.860714
			メセキ=	201.930357

3 LOT

テ/NO.	X	Y	(X-X _o)(Y _{N-1} -Y _o)	(X _{N-1} -X _o)(Y-Y _o)
X _o Y _o	-149900.000	-38600.000		
106	-149903.939	-38637.160		
18	-149906.452	-38637.037	239.756320	145.888743
43	-149907.259	-38654.215	268.851583	349.795180
109	-149904.741	-38654.336	257.033315	394.425024
106	-149903.939	-38637.160	214.029504	176.175560
			979.670722	1066.284507
			ハ イメセキ=	86.613785
			メセキ=	43.306892

4 LOT 変更付以前と同じ

テ/NO.	X	Y	(X-X _o)(Y _{N-1} -Y _o)	(X _{N-1} -X _o)(Y-Y _o)
X _o Y _o	-149900.000	-38600.000		
18	-149906.452	-38637.037		
19	-149915.648	-38636.586	579.554976	236.052872
44	-149916.437	-38653.771	601.364082	841.408608
43	-149907.259	-38654.215	390.323689	891.131955
18	-149906.452	-38637.037	349.795180	268.851583
			1921.037927	2237.445018
			ハ イメセキ=	316.407091
			メセキ=	158.203545

5 LOT

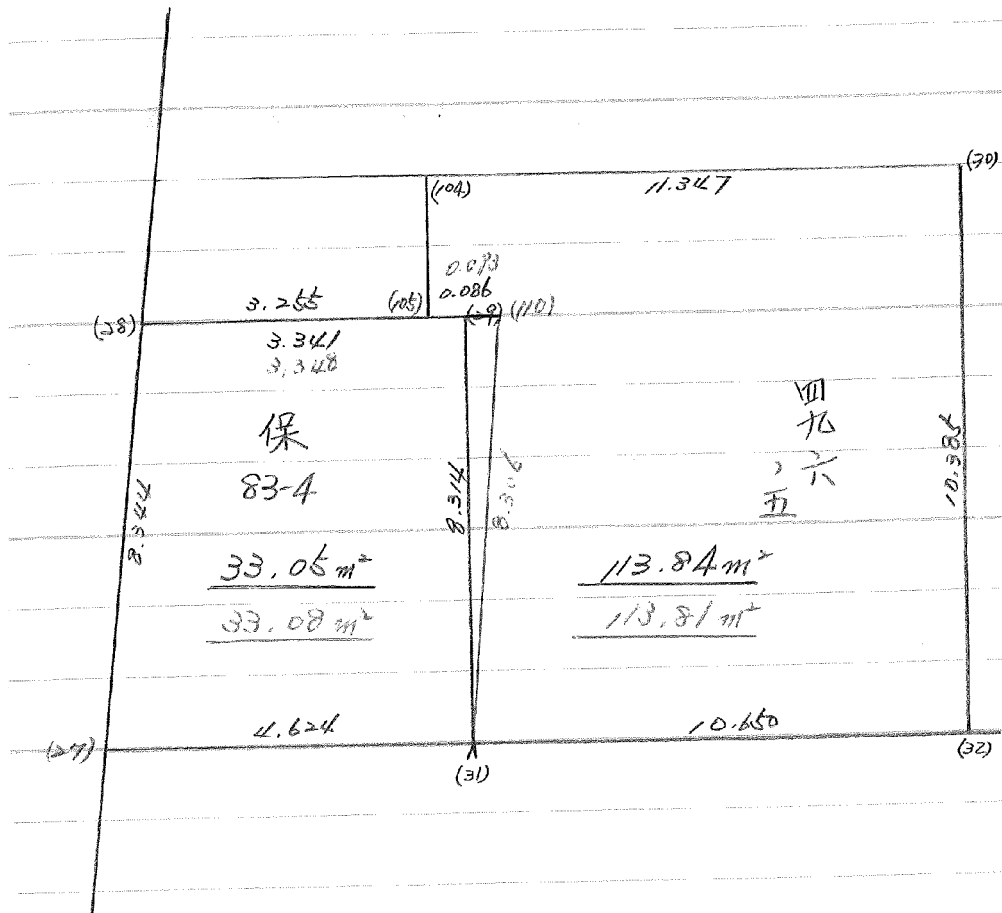
テ/NO.	X	Y	(X-X _o)(Y _{N-1} -Y _o)	(X _{N-1} -X _o)(Y-Y _o)
-------	---	---	--	--

X ₀ Y ₀	-149900.000	-38600.000		
19	-149915.648	-38636.586		
107	-149917.571	-38636.492	642.852606	571.026816
108	-149918.360	-38653.678	669.993120	943.176138
44	-149916.437	-38653.771	882.305286	987.235560
19	-149915.648	-38636.586	841.408608	601.364082
			3036.559620	3102.802596
			イ ン セ キ =	66.242976
			メ ン セ キ =	33.121488

6 LOT

元NO.	X	Y	(X-X ₀) (Y _{N-1} -Y ₀)	(X _{N-1} -X ₀) (Y-Y ₀)
X ₀ Y ₀	-149900.000	-38600.000		
107	-149917.571	-38636.492		
9	-149925.341	-38636.113	924.743772	634.541523
10	-149927.432	-38638.013	990.651816	963.287433
21	-149928.142	-38653.207	1069.761846	1459.574424
108	-149918.360	-38653.678	976.880520	1510.606276
107	-149917.571	-38636.492	943.176138	669.993120
			4905.214092	5238.002776
			イ ン セ キ =	332.788684
			メ ン セ キ =	166.394342

83 Block



13 LOT

元NO. X ₀ Y ₀	X	Y	(X-X ₀) (Y _{N-1} -Y ₀)	(X _{N-1} -X ₀) (Y-Y ₀)
28	-149899.259	-38735.313		
110	-149898.795	-38731.997	3488.747835	3175.990223
31	-149906.935	-38730.346	3421.599195	2998.033070
27	-149907.594	-38734.923	3265.047524	3734.491005
28	-149899.259	-38735.313	3466.422057	3799.466922
			13641.816611	13707.981220
			平均値=	66.164609
			分散=	33.082304

15 LOT

元NO. X ₀ Y ₀	X	Y	(X-X ₀) (Y _{N-1} -Y ₀)	(X _{N-1} -X ₀) (Y-Y ₀)
105	-149898.808	-38732.089		
104	-149896.771	-38732.506	3105.284619	3211.852848
30	-149895.148	-38721.275	3092.880888	2058.803025
32	-149905.429	-38719.806	2243.001975	1884.501288
31	-149906.935	-38730.346	2117.954610	3199.348434
110	-149898.795	-38731.997	2998.033070	3421.599195
105	-149898.808	-38732.089	3161.559576	3170.232755
			16718.714738	16946.337545
			平均値=	227.622807
			分散=	113.811403