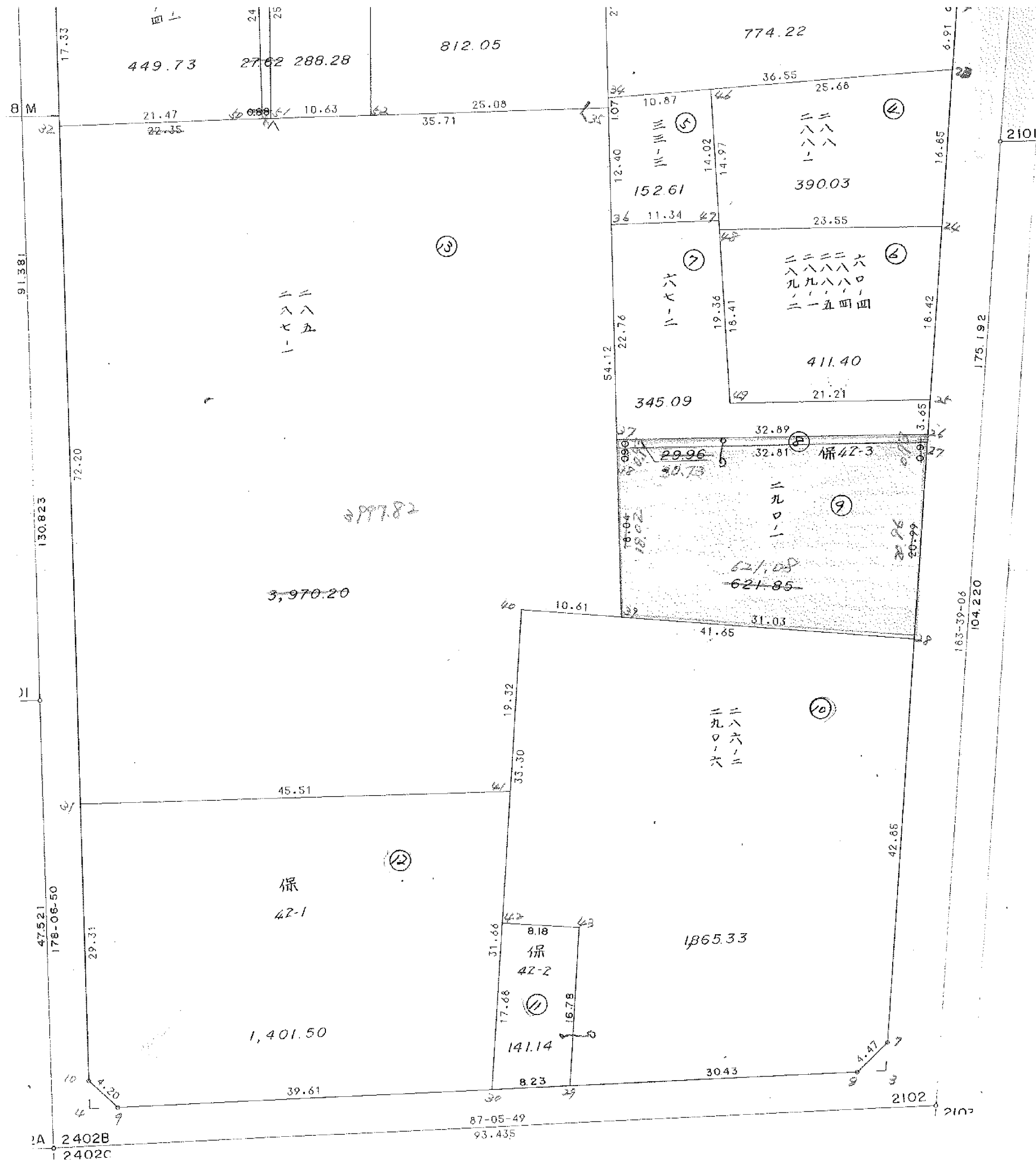


画地確定計算書

BLOCK NO. 42



田
449.73 27.62 288.28

812.05

774.22

152.61

390.03

二二二二六
八八八八六
九九八八〇
一一五五四

411.40

345.09

29.96

621.08
621.85

3,970.20

3997.82

二二六
九八六
〇一六

1665.33

1,401.50

141.14

2402B
2402C

87-05-49
93.435

2102

2101

163-39-06
104.220

175.192

16.65

18.42

3.65

41.65

42.65

4.47

36.55

25.68

6.91

10.87

11.34

19.36

18.41

32.89

32.81

31.03

19.32

33.30

31.66

17.68

8.23

8.18

13

7

6

9

10

二二
八八
七五
一一

保
42-1

保
42-2

保 42-3

BLOCK . LOT KAKUHITSU MENSEKI SUMIKIRI.SUIRO MENSEKI

42 BLOCK 12492.664243

1 LOT	92.398313
2 LOT	319.990841
3 LOT	774.220173
4 LOT	390.037006
5 LOT	152.618788
6 LOT	411.409329
7 LOT	345.096524
8 LOT	29.965164
9 LOT	621.052243
10 LOT	4867.421878
11 LOT	139.162113
12 LOT	1401.501731
13 LOT	3970.201200
14 LOT	449.731522
15 LOT	27.624307
16 LOT	288.288902
17 LOT	812.056868
18 LOT	327.596379
Σ10	71.687595

$\left. \begin{array}{l} 82.736232 \\ 621.084162 \end{array} \right\} \text{併背地調整ノ為書込}$
 1865.006691
 141.743847

2 入三ヶ刈	11.405358
3 入三ヶ刈	4.470496
4 入三ヶ刈	4.498528

TOTAL =
~~12492.664243~~ $\left(\begin{array}{l} 12492.760413 \\ 12492.767430 \end{array} \right)$
 42492.760384 20.374382

42 BLOCK

TENMEI	X	Y	(X-X0)*(YN-1-Y0)	(XN-1-X0)*(Y-Y0)
X0.Y0	- 149400.000	- 39000.000		
OS42-1	- 149461.397	- 39145.471		
OS42-5	- 149426.452	- 39052.123	+ 3847.998892	+ 3200.195831
OS42-6	- 149429.689	- 39047.758	+ 1547.479747	+ 1263.294616
OS42-7	- 149575.922	- 39057.091	+ 8401.682876	+ 1694.974699
OS42-8	- 149579.068	- 39060.278	+ 10223.171188	+ 10604.226316
OS42-9	- 149583.033	- 39138.465	+ 11032.863174	+ 24794.650620
OS42-10	- 149580.187	- 39141.560	+ 24949.592955	+ 25910.151480
OS42-1	- 149461.397	- 39145.471	+ 8691.359320	+ 26211.983077
			+ 68694.148152	+ 93679.476639
		BAI MENSEKI =	24985.328487	
		MENSEKI =	12492.664243	

1 LOT

TENMEI	X	Y	(X-X0)*(YN-1-Y0)	(XN-1-X0)*(Y-Y0)
X0.Y0	- 149400.000	- 39000.000		
OS42-20	- 149428.391	- 39057.304		
OS42-11	- 149427.155	- 39054.002	+ 1556.090120	+ 1533.170782
OS42-12	- 149430.477	- 39049.607	+ 1645.818954	+ 1347.078085
OS42-21	- 149441.738	- 39050.325	+ 2070.496966	+ 1533.755025
OS42-45	- 149442.282	- 39056.051	+ 2127.841650	+ 2339.456638
OS42-20	- 149428.391	- 39057.304	+ 1591.343941	+ 2422.927728
			+ 8991.591631	+ 9176.388258
		BAI MENSEKI =	184.796627	
		MENSEKI =	92.398313	

2 LOT

TENMEI	X	Y	(X-X0)*(YN-1-Y0)	(XN-1-X0)*(Y-Y0)
X0.Y0	- 149400.000	- 39000.000		
OS42-20	- 149428.391	- 39057.304		
OS42-45	- 149442.282	- 39056.051	+ 2422.927728	+ 1591.343941
OS42-21	- 149441.738	- 39050.325	+ 2339.456638	+ 2127.841650
OS42-22	- 149451.102	- 39050.922	+ 2571.708150	+ 2125.382436
OS42-44	- 149452.701	- 39068.533	+ 2683.640322	+ 3502.173366
OS42-19	- 149432.798	- 39069.077	+ 2247.745334	+ 3640.426977
OS42-20	- 149428.391	- 39057.304	+ 1961.165107	+ 1879.456592
			+ 14226.643279	+ 14866.624962
		BAI MENSEKI =	639.981683	
		MENSEKI =	319.990841	

3 LOT

TENMEI	X	Y	(X-X0)*(Yn-1-Y0)	(Xn-1-X0)*(Y-Y0)
X0.Y0	- 149400.000	- 39000.000		
OS42-14	- 149465.545	- 39050.046		
OS42-23	- 149472.441	- 39050.486	+ 3625.382286	+ 3309.104870
OS42-34	- 149475.724	- 39086.893	+ 3823.001864	+ 6294.615813
OS42-33	- 149454.422	- 39087.482	+ 4728.890846	+ 6624.486968
OS42-22	- 149451.102	- 39050.922	+ 4470.505164	+ 2771.277084
OS42-13	- 149463.908	- 39051.740	+ 3254.323176	+ 2644.017480
OS42-14	- 149465.545	- 39050.046	+ 3391.298300	+ 3198.339768
			+ 23293.401636	+ 24841.841983
		BAI MENSEKI =	1548.440347	
		MENSEKI =	774.220173	分筆後の座標なし

4 LOT

TENMEI	X	Y	(X-X0)*(Yn-1-Y0)	(Xn-1-X0)*(Y-Y0)
X0.Y0	- 149400.000	- 39000.000		
OS42-23	- 149472.441	- 39050.486		
OS42-24	- 149489.262	- 39051.560	+ 4506.481332	+ 3735.057960
OS42-48	- 149489.688	- 39075.113	+ 4624.313280	+ 6704.736606
OS42-46	- 149474.748	- 39076.065	+ 5614.546524	+ 6822.117720
OS42-23	- 149472.441	- 39050.486	+ 5510.224665	+ 3773.727528
			+ 20255.565801	+ 21035.639814
		BAI MENSEKI =	780.074013	
		MENSEKI =	390.037006	

5 LOT

TENMEI	X	Y	(X-X0)*(Yn-1-Y0)	(Xn-1-X0)*(Y-Y0)
X0.Y0	- 149400.000	- 39000.000		
OS42-46	- 149474.748	- 39076.065		
OS42-47	- 149488.743	- 39075.173	+ 6750.236295	+ 5619.031404
OS42-36	- 149489.190	- 39086.509	+ 6704.679870	+ 7677.068187
OS42-35	- 149476.794	- 39086.863	+ 6643.372146	+ 7747.310970
OS42-34	- 149475.724	- 39086.893	+ 6577.613812	+ 6672.861042
OS42-46	- 149474.748	- 39076.065	+ 6495.077964	+ 5759.946060
			+ 33170.980087	+ 33476.217663
		BAI MENSEKI =	305.237576	
		MENSEKI =	152.618788	変更後の資料なし

6 LOT

TENMEI	X	Y	(X-X0)*(Yn-1-Y0)	(Xn-1-X0)*(Y-Y0)
X0.Y0	- 149400.000	- 39000.000		
OS42-24	- 149489.262	- 39051.560		
OS42-25	- 149507.647	- 39052.733	+ 5550.279320	+ 4707.053046

TENMEI	X	Y	(X-X0)*(YN-1-Y0)	(XN-1-X0)*(Y-Y0)
OS42-49	- 149508.068	- 39073.941	+ 5698.749844	+ 7959.526827
OS42-48	- 149489.688	- 39075.113	+ 6631.620408	+ 8117.311684
OS42-24	- 149489.262	- 39051.560	+ 6704.736606	+ 4624.313280
			+ 24585.386178	+ 25408.204837
		BAI MENSEKI =	822.818659	
		MENSEKI =	411.409329	

7 LOT

TENMEI	X	Y	(X-X0)*(YN-1-Y0)	(XN-1-X0)*(Y-Y0)
X0.Y0	- 149400.000	- 39000.000		
OS42-25	- 149507.647	- 39052.733		
OS42-26	- 149511.291	- 39052.966	+ 5868.708303	+ 5701.631002
OS42-37	- 149511.944	- 39085.858	+ 5929.225904	+ 9555.222678
OS42-36	- 149489.190	- 39086.509	+ 7657.675020	+ 9684.163496
OS42-47	- 149488.743	- 39075.173	+ 7677.068187	+ 6704.679870
OS42-49	- 149508.068	- 39073.941	+ 8123.795764	+ 6561.746163
OS42-25	- 149507.647	- 39052.733	+ 7959.526827	+ 5698.749844
			+ 43216.000005	+ 43906.193053
		BAI MENSEKI =	690.193048	
		MENSEKI =	345.096524	

変更後の資料なし

8 LOT

TENMEI	X	Y	(X-X0)*(YN-1-Y0)	(XN-1-X0)*(Y-Y0)
X0.Y0	- 149500.000	- 39000.000		
OS42-26	- 149511.291	- 39052.966		
OS42-27	- 149512.203	- 39053.024	+ 646.344098	+ 598.693984
OS42-38	- 149512.857	- 39085.832	+ 681.729568	+ 1047.407896
OS42-37	- 149511.944	- 39085.858	+ 1025.177408	+ 1103.876306
OS42-26	- 149511.291	- 39052.966	+ 969.422678	+ 632.625904
			+ 3322.673752	+ 3382.604090
		BAI MENSEKI =	59.930338	
		MENSEKI =	29.965169	

保留地調整為変更

9 LOT

TENMEI	X	Y	(X-X0)*(YN-1-Y0)	(XN-1-X0)*(Y-Y0)
X0.Y0	- 149500.000	- 39000.000		
OS42-27	- 149512.203	- 39053.024		
OS42-28	- 149533.151	- 39054.361	+ 1757.798624	+ 663.367283
OS42-39	- 149530.898	- 39085.317	+ 1679.646178	+ 2828.343867
OS42-38	- 149512.857	- 39085.832	+ 1096.920669	+ 2652.037136
OS42-27	- 149512.203	- 39053.024	+ 1047.407896	+ 681.729568
			+ 5581.773367	+ 6825.477854
		BAI MENSEKI =	1243.704487	
		MENSEKI =	621.852243	

10 LOT

FOUND. X ₀ Y ₀	X	Y	(X-X ₀)(Y _{N-1} -Y ₀)	(X _{N-1} -X ₀)(Y-Y ₀)
	-149500.000	-39000.000		
28	-149533.151	-39054.361		
7	-149575.922	-39057.091	4127.195842	1892.623741
8	-149579.068	-39060.278	4514.071188	4576.426316
29	-149580.609	-39090.672	4858.949302	7169.253696
43	-149563.853	-39089.685	5789.679216	7229.418165
42	-149563.371	-39097.860	5683.428135	6248.654580
40	-149530.128	-39095.902	2948.326080	6077.405642
28	-149533.151	-39054.361	3179.247202	1637.788208
			31100.896965	34831.570348
			バイのセキ= メのセキ=	3730.673383 1865.336691

11 LOT

FOUND. X ₀ Y ₀	X	Y	(X-X ₀)(Y _{N-1} -Y ₀)	(X _{N-1} -X ₀)(Y-Y ₀)
	-149500.000	-39000.000		
29	-149580.609	-39090.672		
30	-149581.026	-39098.900		
42	-149563.371	-39097.860	7346.789472	7972.230100
43	-149563.853	-39089.685	6267.391900	7929.204360
29	-149580.609	-39090.672	6248.654580	5683.428135
			7229.418165	5789.679216
			27092.254117	27374.541811
			バイのセキ= メのセキ=	282.287694 141.143847

12 LOT

TENMEI	X	Y	(X-X ₀)*(Y _{N-1} -Y ₀)	(X _{N-1} -X ₀)*(Y-Y ₀)
X ₀ Y ₀	- 149500.000	- 39000.000		
OS42-30	- 149581.026	- 39098.900		
OS42-9	- 149583.033	- 39138.465	+ 8211.963700	+ 11219.265090
OS42-10	- 149580.187	- 39141.560	+ 11403.092955	+ 11754.151480
OS42-31	- 149550.887	- 39142.525	+ 7203.563720	+ 11428.652175
OS42-41	- 149549.417	- 39097.038	+ 7043.157925	+ 4937.972706
OS42-30	- 149581.026	- 39098.900	+ 7862.600988	+ 4887.341300
			+ 41424.379288	+ 44227.382751
	BAI MENSEKI =		2803.003463	
	MENSEKI =		1401.501731	

13 LOT

TENMEI	X	Y	(X-X ₀)*(Y _{N-1} -Y ₀)	(X _{N-1} -X ₀)*(Y-Y ₀)
X ₀ Y ₀	- 149400.000	- 39000.000		
OS42-31	- 149550.887	- 39142.525		
OS42-32	- 149478.722	- 39144.901	+ 11219.853050	+ 21863.677187

* * * * * M E N S E K I K E I S A N * * * * *

TENMEI	X	Y	(X-X0)*(YN-1-Y0)	(XN-1-X0)*(Y-Y0)
OS42-51	- 149477.957	- 39122.562	+ 11296.047257	+ 9648.325764
OS42-35	- 149476.794	- 39086.863	+ 9412.026228	+ 6771.573891
OS42-39	- 149530.898	- 39085.317	+ 11370.192974	+ 6551.833698
OS42-40	- 149530.128	- 39095.902	+ 11102.130576	+ 12553.379996
OS42-41	- 149549.417	- 39097.038	+ 14329.389134	+ 12627.360864
OS42-31	- 149550.887	- 39142.525	+ 14641.772706	+ 21295.657925
			+ 83371.411925	+ 91311.814325
		BAI MENSEKI =	7940.402400	
		MENSEKI =	3970.201200	

14 LOT

TENMEI	X	Y	(X-X0)*(YN-1-Y0)	(XN-1-X0)*(Y-Y0)
X0.Y0	- 149400.000	- 39100.000		
OS42-32	- 149478.722	- 39144.901		
OS42-1	- 149461.397	- 39145.471	+ 2756.786697	+ 3579.568062
OS42-15	- 149453.449	- 39124.241	+ 2430.379479	+ 1488.324677
OS42-50	- 149477.987	- 39123.443	+ 1890.482867	+ 1253.004907
OS42-32	- 149478.722	- 39144.901	+ 1845.479846	+ 3501.694287
			+ 8923.128889	+ 9822.591933
		BAI MENSEKI =	899.463044	
		MENSEKI =	449.731522	

15 LOT

TENMEI	X	Y	(X-X0)*(YN-1-Y0)	(XN-1-X0)*(Y-Y0)
X0.Y0	- 149400.000	- 39100.000		
OS42-15	- 149453.449	- 39124.241		
OS42-16	- 149452.949	- 39122.904	+ 1283.536709	+ 1224.195896
OS42-51	- 149477.957	- 39122.562	+ 1785.527128	+ 1194.635338
OS42-50	- 149477.987	- 39123.443	+ 1759.542694	+ 1827.545951
OS42-15	- 149453.449	- 39124.241	+ 1253.004907	+ 1890.482867
			+ 6081.611438	+ 6136.860052
		BAI MENSEKI =	55.248614	
		MENSEKI =	27.624307	

16 LOT

TENMEI	X	Y	(X-X0)*(YN-1-Y0)	(XN-1-X0)*(Y-Y0)
X0.Y0	- 149400.000	- 39100.000		
OS42-16	- 149452.949	- 39122.904		
OS42-17	- 149448.905	- 39112.102	+ 1120.120120	+ 640.788798
OS42-52	- 149477.611	- 39111.937	+ 939.248322	+ 583.778985
OS42-51	- 149477.957	- 39122.562	+ 930.572709	+ 1751.059382
OS42-16	- 149452.949	- 39122.904	+ 1194.635338	+ 1785.527128

* * * * * M E N S E K I K E I S A N * * * * *

TENMEI	X	Y	(X-X0)*(YN-1-Y0)	(XN-1-X0)*(Y-Y0)
			+ 4184.576489	+ 4761.154293
		BAI MENSEKI =	576.577804	
		MENSEKI =	288.288902	

17 LOT

TENMEI	X	Y	(X-X0)*(YN-1-Y0)	(XN-1-X0)*(Y-Y0)
X0.Y0	- 149400.000	- 39000.000		
OS42-17	- 149448.905	- 39112.102		
OS42-18	- 149439.839	- 39087.885	+ 4466.031578	+ 4298.015925
OS42-35	- 149476.794	- 39086.863	+ 6749.040690	+ 3460.535057
OS42-52	- 149477.611	- 39111.937	+ 6741.524293	+ 8596.089978
OS42-17	- 149448.905	- 39112.102	+ 5474.278985	+ 8700.348322
			+ 23430.875546	+ 25054.989282
		BAI MENSEKI =	1624.113736	
		MENSEKI =	812.056868	

18 LOT

TENMEI	X	Y	(X-X0)*(YN-1-Y0)	(XN-1-X0)*(Y-Y0)
X0.Y0	- 149400.000	- 39000.000		
OS42-18	- 149439.839	- 39087.885		
OS42-19	- 149432.798	- 39069.077	+ 2882.452230	+ 2751.958603
OS42-44	- 149452.701	- 39068.533	+ 3640.426977	+ 2247.745334
OS42-33	- 149454.422	- 39087.482	+ 3729.702926	+ 4610.388882
OS42-18	- 149439.839	- 39087.885	+ 3485.195398	+ 4782.877470
			+ 13737.777531	+ 14392.970289
		BAI MENSEKI =	655.192758	
		MENSEKI =	327.596379	

19 LOT

TENMEI	X	Y	(X-X0)*(YN-1-Y0)	(XN-1-X0)*(Y-Y0)
X0.Y0	- 149400.000	- 39000.000		
OS42-11	- 149427.155	- 39054.002		
OS42-5	- 149426.452	- 39052.123	+ 1428.460904	+ 1415.400065
OS42-6	- 149429.689	- 39047.758	+ 1547.479747	+ 1263.294616
OS42-14	- 149465.545	- 39050.046	+ 3130.298110	+ 1485.815694
OS42-13	- 149463.908	- 39051.740	+ 3198.339768	+ 3391.298300
OS42-12	- 149430.477	- 39049.607	+ 1576.879980	+ 3170.284156
OS42-11	- 149427.155	- 39054.002	+ 1347.078085	+ 1645.818954
			+ 12228.536594	+ 12371.911785
		BAI MENSEKI =	143.375191	
		MENSEKI =	71.687595	

2 入出

TENMEI	X	Y	(X-X0)*(YN-1-Y0)	(XN-1-X0)*(Y-Y0)
X0.Y0	- 149400.000	- 39000.000		
OS42-2	- 149424.699	- 39047.440		
OS42-5	- 149426.452	- 39052.123	+ 1254.882880	+ 1287.385977
OS42-6	- 149429.689	- 39047.758	+ 1547.479747	+ 1263.294616
OS42-2	- 149424.699	- 39047.440	+ 1179.574842	+ 1408.446160
			+ 3981.937469	+ 3959.126753
		BAI MENSEKI =	22.810716	
		MENSEKI =	11.405358	

3 入出

TENMEI	X	Y	(X-X0)*(YN-1-Y0)	(XN-1-X0)*(Y-Y0)
X0.Y0	- 149500.000	- 39000.000		
OS42-3	- 149578.916	- 39057.282		
OS42-7	- 149575.922	- 39057.091	+ 4348.964004	+ 4505.393356
OS42-8	- 149579.068	- 39060.278	+ 4514.071188	+ 4576.426316
OS42-3	- 149578.916	- 39057.282	+ 4756.898648	+ 4529.173176
			+ 13619.933840	+ 13610.992848
		BAI MENSEKI =	8.940992	
		MENSEKI =	4.470496	

4 入出

TENMEI	X	Y	(X-X0)*(YN-1-Y0)	(XN-1-X0)*(Y-Y0)
X0.Y0	- 149500.000	- 39100.000		
OS42-4	- 149583.185	- 39141.461		
OS42-9	- 149583.033	- 39138.465	+ 3442.631213	+ 3199.711025
OS42-10	- 149580.187	- 39141.560	+ 3084.392955	+ 3450.851480
OS42-4	- 149583.185	- 39141.461	+ 3457.168600	+ 3324.633207
			+ 9984.192768	+ 9975.195712
		BAI MENSEKI =	8.997056	
		MENSEKI =	4.498528	

8 LOT

元NO. X _o Y _o	X	Y	(X-X _o)(Y _{N-1} -Y _o)	(X _{N-1} -X _o)(Y-Y _o)
	-149500.000	-39000.000		
26	-149511.291	-39052.966		
27	-149512.228	-39053.025	647.668248	598.705275
38	-149512.879	-39085.831	682.908975	1049.541468
37	-149511.944	-39085.858	1025.165464	1105.765182
26	-149511.291	-39052.966	969.422678	632.625904
			3325.165365	3386.637829
			平均値=	61.472464
			分散=	30.736232

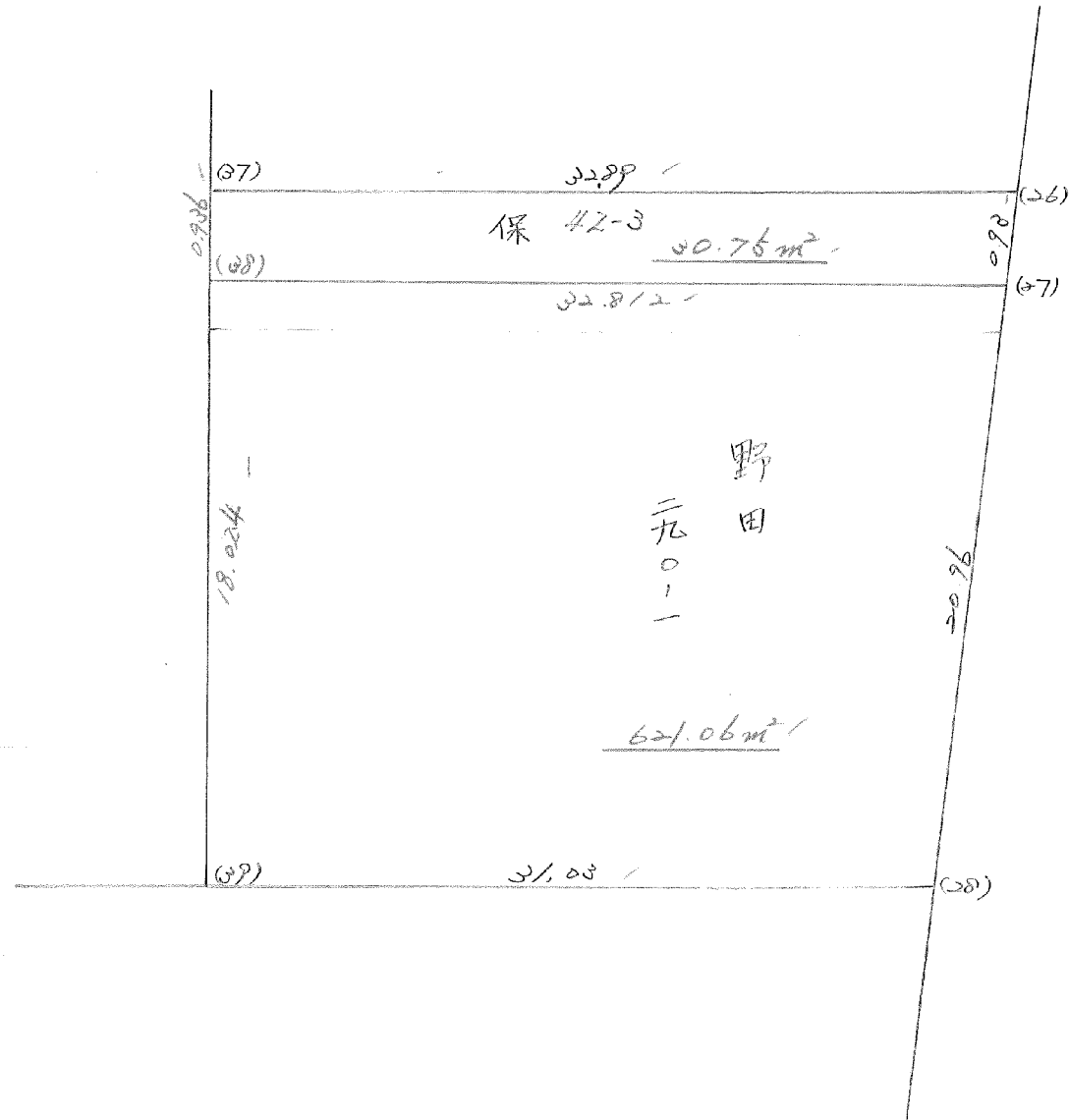
9 LOT

元NO. X _o Y _o	X	Y	(X-X _o)(Y _{N-1} -Y _o)	(X _{N-1} -X _o)(Y-Y _o)
	-149500.000	-39000.000		
27	-149512.228	-39053.025		
28	-149533.151	-39054.361	1757.831775	664.726308
39	-149530.898	-39085.317	1679.646178	2828.343867

38	-149512.877	-39085.831	1098.797643	2652.006238
27	-149512.228	-39053.025	1049.541468	682.908975
			5585.817064	6827.985388
			イマセキ=	1242.168324
			ムセキ=	621.084162

カイツ	ムセキ=	0.000000
カクヒツソウ	ムセキ=	651.820394
スミキリソウ	ムセキ=	0.000000

42 Block 1



(ホ)42-3 LOT

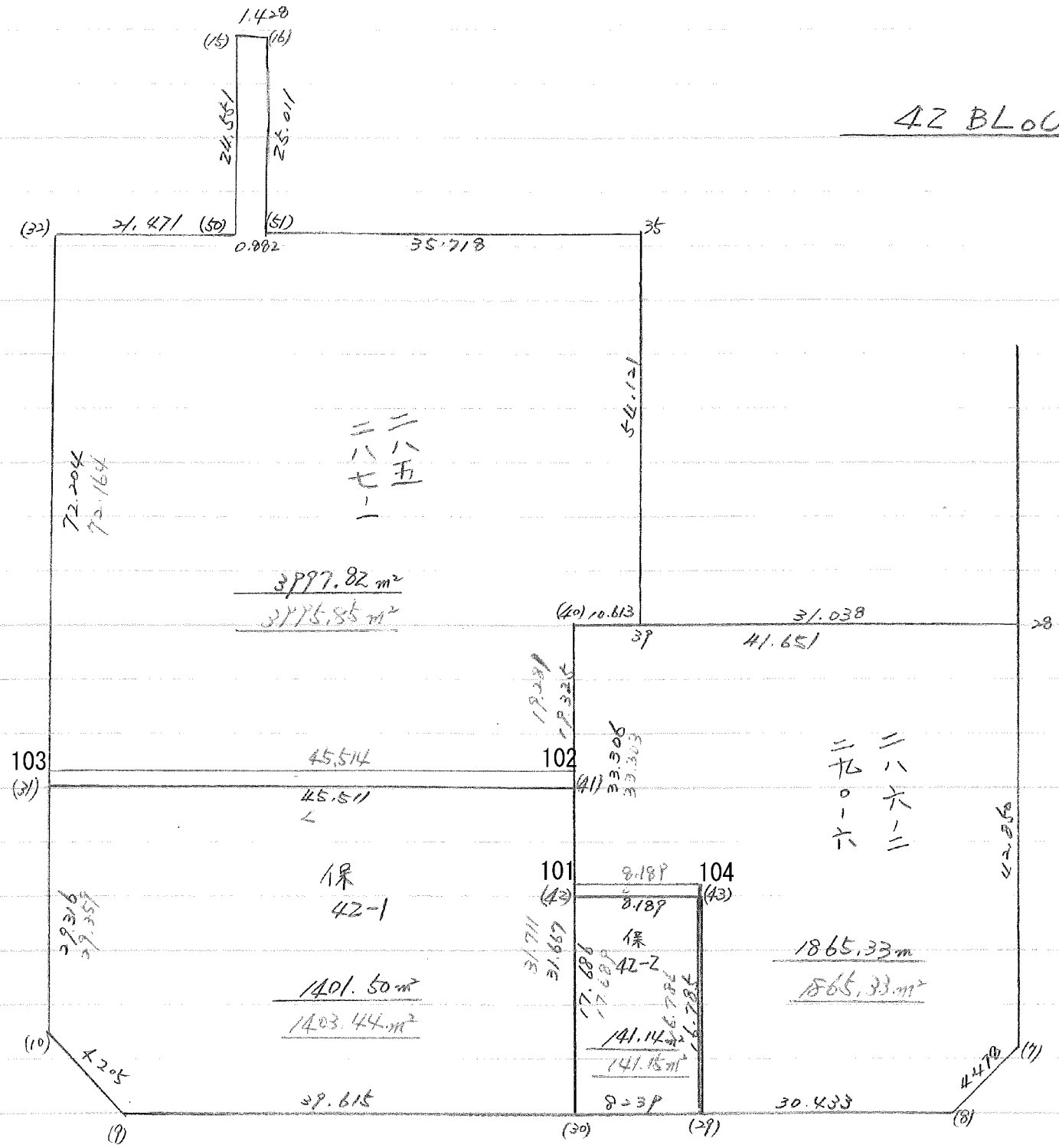
元NO. X _o Y _o	X	Y	(X-X _o)(Y _{N-1} -Y _o)	(X _{N-1} -X _o)(Y-Y _o)
	-149500.000	-39000.000		
26	-149511.291	-39052.966		
27	-149512.228	-39053.025	647.668248	598.705275
38	-149512.880	-39085.831	682.962000	1049.541468
37	-149511.944	-39085.858	1025.165464	1105.851040
26	-149511.291	-39052.966	969.422678	632.625904
			3325.218390	3386.723687
			平均イノセキ=	61.505297
			ノセキ=	30.752648

9 LOT

元NO. X _o Y _o	X	Y	(X-X _o)(Y _{N-1} -Y _o)	(X _{N-1} -X _o)(Y-Y _o)
	-149500.000	-39000.000		
27	-149512.228	-39053.025		
28	-149533.151	-39054.361	1757.831775	664.726308
39	-149530.898	-39085.317	1679.646178	2828.343867
38	-149512.880	-39085.831	1098.882960	2652.006238
27	-149512.228	-39053.025	1049.541468	682.962000
			5585.902381	6828.038413
			平均イノセキ=	1242.136032
			ノセキ=	621.068016

42 BLOCK

width 1.5 變



10 LOT

テリNO.	X	Y	(X-X ₀)(Y _{N-1} -Y ₀)	(X _{N-1} -X ₀)(Y-Y ₀)
X ₀ Y ₀	-149500.000	-39000.000		
28	-149533.151	-39054.361		
7	-149575.922	-39057.091	4127.195842	1892.623741
8	-149579.068	-39060.278	4514.071188	4576.426316
29	-149580.609	-39090.672	4858.949302	7169.253696
104	-149563.852	-39089.685	5789.588544	7229.418165
101	-149563.370	-39097.860	5683.338450	6248.556720
40	-149530.128	-39095.902	2948.326080	6077.309740
39	-149530.898	-39085.317	2963.179996	2570.430576
28	-149533.151	-39054.361	2828.343867	1679.646178
			33712.993269	37443.665132
			イメジセキ=	3730.671863
			ズセキ=	1865.335931

11 LOT

テリNO.	X	Y	(X-X ₀)(Y _{N-1} -Y ₀)	(X _{N-1} -X ₀)(Y-Y ₀)
X ₀ Y ₀	-149500.000	-39000.000		
29	-149580.609	-39090.672		
30	-149581.026	-39098.900	7346.789472	7972.230100
101	-149563.370	-39097.860	6267.293000	7929.204360
104	-149563.852	-39089.685	6248.556720	5683.338450
29	-149580.609	-39090.672	7229.418165	5789.588544
			27092.057357	27374.361454
			イメジセキ=	282.304097
			ズセキ=	141.152048

12 LOT

元NO.	X	Y	(X-X ₀) (Y _{N-1} -Y ₀)	(X _{N-1} -X ₀) (Y-Y ₀)
X ₀ Y ₀	-149500.000	-39000.000		
30	-149581.026	-39098.900		
9	-149583.033	-39138.465	8211.963700	11219.265090
10	-149580.187	-39141.560	11103.092955	11754.151480
103	-149550.844	-39142.526	7197.476640	11428.732362
102	-149549.374	-39097.036	7037.078724	4933.698384
30	-149581.026	-39098.900	7862.438936	4883.088600
			41412.050955	44218.935916
			平均X座標=	2806.884961
			平均Y座標=	1403.442480

13 LOT

元NO.	X	Y	(X-X ₀) (Y _{N-1} -Y ₀)	(X _{N-1} -X ₀) (Y-Y ₀)
X ₀ Y ₀	-149400.000	-39000.000		
32	-149478.722	-39144.901		
50	-149477.987	-39123.443	11300.394287	9717.679846
15	-149453.449	-39124.241	6597.904907	9689.182867
16	-149452.949	-39122.904	6578.436709	6569.095896
51	-149477.957	-39122.562	9581.227128	6489.535338
35	-149476.794	-39086.863	9412.026228	6771.578891
39	-149530.898	-39085.317	11370.192974	6551.833698
40	-149530.128	-39095.902	11102.130576	12553.379996
102	-149549.374	-39097.036	14325.265348	12627.100608
103	-149550.844	-39142.526	14637.298384	21289.678724
32	-149478.722	-39144.901	11219.931772	21857.446444
			106124.808313	114116.512308
			平均X座標=	7991.703995
			平均Y座標=	3995.851997