

面地確定計算書

BLOCK NO. 17-1



④市針指示により 17-2 Blockは 17-1 Blockに変更す。

BLOCK . LOT	KAKUHITSU MENSEKI	SUMIKIRI.SUIRO MENSEKI
17- <del>1</del> <sup>1</sup> BLOCK	1328.488675	
1 LOT	252.968332 /	
2 LOT	73.325428 /	
3 LOT	135.055603	
4 LOT	188.338193 /	
5 LOT	24.361225 /	
6 LOT	96.342891	
7 LOT	63.925146	
8 LOT	60.983985	
9 LOT	54.269359	
10 LOT	52.836739	
11 LOT	42.892572	
12 LOT	71.666311 /	
13 LOT	211.535662 /	
1 入三ヶ刈		1.988888
2 入三ヶ刈		1.993394
3 入三ヶ刈		1.984269
5 入三ヶ刈		2.000280
TOTAL =	1328.501446	7.966831

\* \* \* \* \* M E N S E K I K E I S A N \* \* \* \* \*

17-2 BLOCK

TENMEI	X	Y	(X-X0)*(YN-1-Y0)	(XN-1-X0)*(Y-Y0)
X0.Y0	- 149300.000	- 38900.000		
OS172-6	- 149304.206	- 38984.036		
OS172-7	- 149306.014	- 38982.067	+ 505.392504	+ 345.173802
OS172-8	- 149356.646	- 38982.615	+ 4648.767282	+ 496.846610
OS172-9	- 149358.792	- 38984.632	+ 4857.101080	+ 4794.064272
OS172-10	- 149360.373	- 39006.200	+ 5109.487736	+ 6243.710400
OS172-11	- 149358.522	- 39008.089	+ 6215.036400	+ 6525.657197
OS172-4	- 149318.535	- 39005.958	+ 2003.429615	+ 6200.874076
OS172-12	- 149308.421	- 39006.923	+ 892.272318	+ 1981.817805
OS172-13	- 149306.238	- 39005.122	+ 666.985674	+ 885.232362
OS172-6	- 149304.206	- 38984.036	+ 442.143132	+ 524.216568
			+ 25340.615741	+ 27997.593092
		BAI MENSEKI =	2656.977351	
		MENSEKI =	1328.488675	

1 LOT

TENMEI	X	Y	(X-X0)*(YN-1-Y0)	(XN-1-X0)*(Y-Y0)
X0.Y0	- 149300.000	- 38900.000		
OS172-6	- 149304.206	- 38984.036		
OS172-7	- 149306.014	- 38982.067	+ 505.392504	+ 345.173802
OS172-15	- 149323.839	- 38982.260	+ 1956.395213	+ 494.711640
OS172-27	- 149324.537	- 38994.658	+ 2018.413620	+ 2256.552062
OS172-14	- 149305.333	- 38995.733	+ 504.811114	+ 2349.000621
OS172-6	- 149304.206	- 38984.036	+ 402.652998	+ 448.163988
			+ 5387.665449	+ 5893.602113
		BAI MENSEKI =	505.936664	
		MENSEKI =	252.968332	

2 LOT

TENMEI	X	Y	(X-X0)*(YN-1-Y0)	(XN-1-X0)*(Y-Y0)
X0.Y0	- 149300.000	- 38900.000		
OS172-15	- 149323.839	- 38982.260		
OS172-16	- 149329.861	- 38982.325	+ 2456.365860	+ 1962.545675
OS172-40	- 149329.946	- 38983.718	+ 2465.304450	+ 2499.903198
OS172-28	- 149330.513	- 38994.324	+ 2554.487334	+ 2824.626504
OS172-27	- 149324.537	- 38994.658	+ 2314.427988	+ 2888.299554
OS172-15	- 149323.839	- 38982.260	+ 2256.552062	+ 2018.413620
			+ 12047.137694	+ 12193.788551
		BAI MENSEKI =	146.650857	
		MENSEKI =	73.325428	

\* \* \* \* \* M E N S E K I K E I S A N \* \* \* \* \*

3 LOT

TENMEI	X	Y	(X-X0)*(YN-1-Y0)	(XN-1-X0)*(Y-Y0)
X0.Y0	- 149300.000	- 38900.000		
OS172-16	- 149329.861	- 38982.325		
OS172-17	- 149337.409	- 38982.407	+ 3079.695925	+ 2460.755427
OS172-30	- 149337.417	- 38998.568	+ 3083.422719	+ 3687.330312
OS172-31	- 149337.418	- 39001.419	+ 3688.217424	+ 3794.794723
OS172-29	- 149330.911	- 39001.755	+ 3134.962709	+ 3807.468590
OS172-28	- 149330.513	- 38994.324	+ 3104.850315	+ 2915.649164
OS172-40	- 149329.946	- 38983.718	+ 2824.626504	+ 2554.487334
OS172-16	- 149329.861	- 38982.325	+ 2499.903198	+ 2465.304450
			+ 21415.678794	+ 21685.790000
		BAI MENSEKI =	270.111206	
		MENSEKI =	135.055603	

4 LOT

TENMEI	X	Y	(X-X0)*(YN-1-Y0)	(XN-1-X0)*(Y-Y0)
X0.Y0	- 149300.000	- 38900.000		
OS172-17	- 149337.409	- 38982.407		
OS172-18	- 149349.412	- 38982.537	+ 4071.894684	+ 3087.626633
OS172-36	- 149349.572	- 38996.527	+ 4091.524164	+ 4769.592124
OS172-35	- 149349.375	- 38996.574	+ 4766.020625	+ 4787.366328
OS172-34	- 149345.726	- 38998.199	+ 4415.942724	+ 4848.575625
OS172-33	- 149344.322	- 38998.261	+ 4352.376078	+ 4493.082486
OS172-30	- 149337.417	- 38998.568	+ 3676.631837	+ 4368.730896
OS172-17	- 149337.409	- 38982.407	+ 3687.330312	+ 3083.422719
			+ 29061.720424	+ 29438.396811
		BAI MENSEKI =	376.676387	
		MENSEKI =	188.338193	

5 LOT

TENMEI	X	Y	(X-X0)*(YN-1-Y0)	(XN-1-X0)*(Y-Y0)
X0.Y0	- 149300.000	- 38900.000		
OS172-18	- 149349.412	- 38982.537		
OS172-19	- 149351.232	- 38982.557	+ 4228.535584	+ 4079.306484
OS172-38	- 149351.286	- 38996.117	+ 4234.018302	+ 4924.266144
OS172-37	- 149349.718	- 38996.492	+ 4778.745006	+ 4948.688712
OS172-36	- 149349.572	- 38996.527	+ 4783.301424	+ 4799.129386
OS172-18	- 149349.412	- 38982.537	+ 4769.592124	+ 4091.524164
			+ 22794.192440	+ 22842.914890
		BAI MENSEKI =	48.722450	
		MENSEKI =	24.361225	

\* \* \* \* \* M E N S E K I K E I S A N \* \* \* \* \*

6 LOT

TENMEI	X	Y	(X-X0)*(YN-1-Y0)	(XN-1-X0)*(Y-Y0)
X0.Y0	- 149300.000	- 38900.000		
OS172-19	- 149351.232	- 38982.557		
OS172-8	- 149356.646	- 38982.615	+ 4676.523822	+ 4232.531680
OS172-9	- 149358.792	- 38984.632	+ 4857.101080	+ 4794.064272
OS172-20	- 149359.490	- 38994.154	+ 5034.757680	+ 5535.501968
OS172-38	- 149351.286	- 38996.117	+ 4828.782044	+ 5718.000330
OS172-19	- 149351.232	- 38982.557	+ 4924.266144	+ 4234.018302
			+ 24321.430770	+ 24514.116552
		BAI MENSEKI =	192.685782	
		MENSEKI =	96.342891	

7 LOT

TENMEI	X	Y	(X-X0)*(YN-1-Y0)	(XN-1-X0)*(Y-Y0)
X0.Y0	- 149300.000	- 38900.000		
OS172-20	- 149359.490	- 38994.154		
OS172-21	- 149360.026	- 39001.464	+ 5651.688004	+ 6036.093360
OS172-39	- 149349.984	- 39001.972	+ 5071.576576	+ 6120.971272
OS172-37	- 149349.718	- 38996.492	+ 5069.843896	+ 4823.056128
OS172-38	- 149351.286	- 38996.117	+ 4948.688712	+ 4778.745006
OS172-20	- 149359.490	- 38994.154	+ 5718.000330	+ 4828.782044
			+ 26459.797518	+ 26587.647810
		BAI MENSEKI =	127.850292	
		MENSEKI =	63.925146	

8 LOT

TENMEI	X	Y	(X-X0)*(YN-1-Y0)	(XN-1-X0)*(Y-Y0)
X0.Y0	- 149300.000	- 39000.000		
OS172-21	- 149360.026	- 39001.464		
OS172-10	- 149360.373	- 39006.200	+ 88.386072	+ 372.161200
OS172-11	- 149358.522	- 39008.089	+ 362.836400	+ 488.357197
OS172-22	- 149350.260	- 39007.649	+ 406.553140	+ 447.634778
OS172-39	- 149349.984	- 39001.972	+ 382.327616	+ 99.112720
OS172-21	- 149360.026	- 39001.464	+ 118.371272	+ 73.176576
			+ 1358.474500	+ 1480.442471
		BAI MENSEKI =	121.967971	
		MENSEKI =	60.983985	

9 LOT

TENMEI	X	Y	(X-X0)*(YN-1-Y0)	(XN-1-X0)*(Y-Y0)
X0.Y0	- 149300.000	- 38900.000		
OS172-22	- 149350.260	- 39007.649		
OS172-23	- 149344.829	- 39007.360	+ 4825.797021	+ 5395.913600

\* \* \* \* \* M E N S E K I K E I S A N \* \* \* \* \*

TENMEI	X	Y	(X-X0)*(YN-1-Y0)	(XN-1-X0)*(Y-Y0)
OS172-33	- 149344.322	- 38998.261	+ 4758.409920	+ 4404.942369
OS172-34	- 149345.726	- 38998.199	+ 4493.082486	+ 4352.376078
OS172-35	- 149349.375	- 38996.574	+ 4848.575625	+ 4415.942724
OS172-36	- 149349.572	- 38996.527	+ 4787.366328	+ 4766.020625
OS172-37	- 149349.718	- 38996.492	+ 4799.129386	+ 4783.301424
OS172-39	- 149349.984	- 39001.972	+ 4823.056128	+ 5069.843896
OS172-22	- 149350.260	- 39007.649	+ 5125.112720	+ 5380.727616
			+ 38460.529614	+ 38569.068332
		BAI MENSEKI =	108.538718	
		MENSEKI =	54.269359	

10 LOT

TENMEI	X	Y	(X-X0)*(YN-1-Y0)	(XN-1-X0)*(Y-Y0)
X0.Y0	- 149300.000	- 38900.000		
OS172-23	- 149344.829	- 39007.360		
OS172-24	- 149339.314	- 39007.066	+ 4220.751040	+ 4799.661714
OS172-32	- 149338.988	- 39001.338	+ 4174.289208	+ 3984.002132
OS172-31	- 149337.418	- 39001.419	+ 3791.865284	+ 3954.123972
OS172-30	- 149337.417	- 38998.568	+ 3794.794723	+ 3688.217424
OS172-33	- 149344.322	- 38998.261	+ 4368.730896	+ 3676.631837
OS172-23	- 149344.829	- 39007.360	+ 4404.942369	+ 4758.409920
			+ 24755.373520	+ 24861.046999
		BAI MENSEKI =	105.673479	
		MENSEKI =	52.836739	

11 LOT

TENMEI	X	Y	(X-X0)*(YN-1-Y0)	(XN-1-X0)*(Y-Y0)
X0.Y0	- 149300.000	- 39000.000		
OS172-24	- 149339.314	- 39007.066		
OS172-25	- 149331.215	- 39006.634	+ 220.565190	+ 260.809076
OS172-29	- 149330.911	- 39001.755	+ 205.063574	+ 54.782325
OS172-31	- 149337.418	- 39001.419	+ 65.668590	+ 43.862709
OS172-32	- 149338.988	- 39001.338	+ 55.323972	+ 50.065284
OS172-24	- 149339.314	- 39007.066	+ 52.602132	+ 275.489208
			+ 599.223458	+ 685.008602
		BAI MENSEKI =	85.785144	
		MENSEKI =	42.892572	

12 LOT

TENMEI	X	Y	(X-X0)*(YN-1-Y0)	(XN-1-X0)*(Y-Y0)
X0.Y0	- 149300.000	- 38900.000		
OS172-25	- 149331.215	- 39006.634		
OS172-26	- 149325.204	- 39006.314	+ 2687.603336	+ 3318.591510

\* \* \* \* \* M E N S E K I K E I S A N \* \* \* \* \*

TENMEI	X	Y	(X-X0)*(YN-1-Y0)	(XN-1-X0)*(Y-Y0)
OS172-27	- 149324.537	- 38994.658	+ 2608.626618	+ 2385.760232
OS172-28	- 149330.513	- 38994.324	+ 2888.299554	+ 2314.427988
OS172-29	- 149330.911	- 39001.755	+ 2915.649164	+ 3104.850315
OS172-25	- 149331.215	- 39006.634	+ 3176.282325	+ 3296.163574
			+ 14276.460997	+ 14419.793619
		BAI MENSEKI =	143.332622	
		MENSEKI =	71.666311	

13 LOT

TENMEI	X	Y	(X-X0)*(YN-1-Y0)	(XN-1-X0)*(Y-Y0)
X0.Y0	- 149300.000	- 38900.000		
OS172-12	- 149308.421	- 39006.923		
OS172-13	- 149306.238	- 39005.122	+ 666.985674	+ 885.232362
OS172-14	- 149305.333	- 38995.733	+ 560.615626	+ 597.182454
OS172-27	- 149324.537	- 38994.658	+ 2349.000621	+ 504.811114
OS172-26	- 149325.204	- 39006.314	+ 2385.760232	+ 2608.626618
OS172-4	- 149318.535	- 39005.958	+ 1970.529990	+ 2670.565432
OS172-12	- 149308.421	- 39006.923	+ 892.272318	+ 1981.817805
			+ 8825.164461	+ 9248.235785
		BAI MENSEKI =	423.071324	
		MENSEKI =	211.535662	

1 入組

TENMEI	X	Y	(X-X0)*(YN-1-Y0)	(XN-1-X0)*(Y-Y0)
X0.Y0	- 149300.000	- 38900.000		
OS172-1	- 149304.014	- 38982.045		
OS172-6	- 149304.206	- 38984.036	+ 345.081270	+ 337.320504
OS172-7	- 149306.014	- 38982.067	+ 505.392504	+ 345.173802
OS172-1	- 149304.014	- 38982.045	+ 329.416938	+ 493.418630
			+ 1179.890712	+ 1175.912936
		BAI MENSEKI =	3.977776	
		MENSEKI =	1.988888	

2 入組

TENMEI	X	Y	(X-X0)*(YN-1-Y0)	(XN-1-X0)*(Y-Y0)
X0.Y0	- 149300.000	- 38900.000		
OS172-2	- 149358.646	- 38982.637		
OS172-8	- 149356.646	- 38982.615	+ 4681.055502	+ 4845.039290
OS172-9	- 149358.792	- 38984.632	+ 4857.101080	+ 4794.064272
OS172-2	- 149358.646	- 38982.637	+ 4963.328272	+ 4858.394504
			+ 14501.484854	+ 14497.498066
		BAI MENSEKI =	3.986788	
		MENSEKI =	1.993394	



\* \* \* \* \* M E N S E K I K E I S A N \* \* \* \* \*

3 ㊦㊦

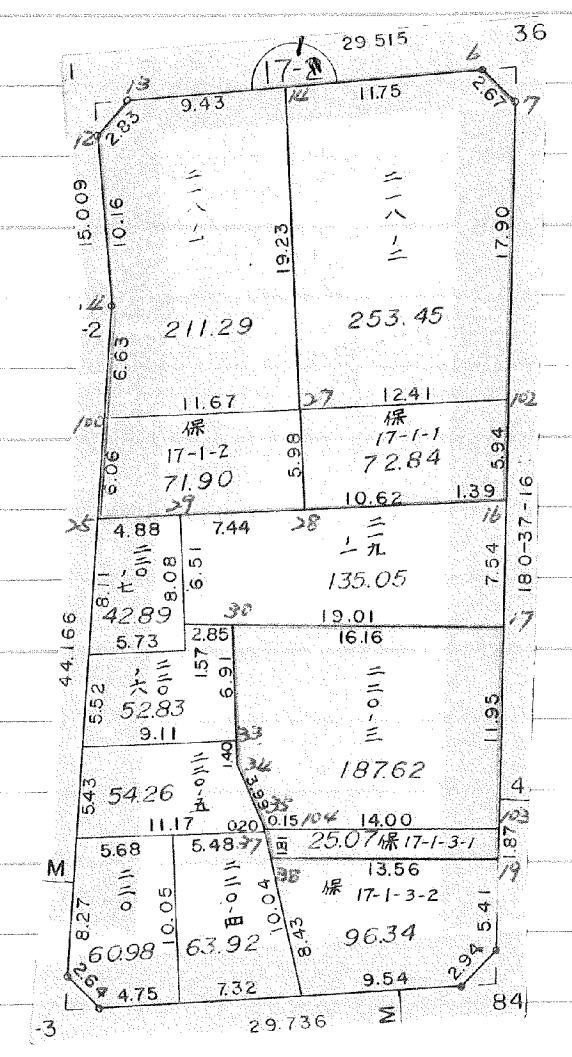
TENMEI	X	Y	(X-X0)*(YN-1-Y0)	(XN-1-X0)*(Y-Y0)
X0.Y0	- 149300.000	- 39000.000		
OS172-3	- 149360.519	- 39008.195		
OS172-10	- 149360.373	- 39006.200	+ 494.756735	+ 375.217800
OS172-11	- 149358.522	- 39008.089	+ 362.836400	+ 488.357197
OS172-3	- 149360.519	- 39008.195	+ 489.538191	+ 479.587790
			+ 1347.131326	+ 1343.162787
		BAI MENSEKI =	3.968539	
		MENSEKI =	1.984269	

5 ㊦㊦

TENMEI	X	Y	(X-X0)*(YN-1-Y0)	(XN-1-X0)*(Y-Y0)
X0.Y0	- 149300.000	- 39000.000		
OS172-5	- 149306.430	- 39007.113		
OS172-12	- 149308.421	- 39006.923	+ 59.898573	+ 44.514890
OS172-13	- 149306.238	- 39005.122	+ 43.185674	+ 43.132362
OS172-5	- 149306.430	- 39007.113	+ 32.934460	+ 44.370894
			+ 136.018707	+ 132.018146
		BAI MENSEKI =	4.000561	
		MENSEKI =	2.000280	

□ 確定以後変更

保留地変更計算  
558/1



1 LOT

元NO.	X	Y	(X-X <sub>0</sub> )(Y <sub>N-1</sub> -Y <sub>0</sub> )	(X <sub>N-1</sub> -X <sub>0</sub> )(Y-Y <sub>0</sub> )
X <sub>0</sub> Y <sub>0</sub>	-149300.000	-38900.000		
6	-149304.206	-38984.036		
7	-149306.014	-38982.067	505.392504	345.173802
102	-149323.917	-38982.261	1962.796439	494.717654
27	-149324.537	-38994.658	2018.438157	2263.935386
14	-149305.333	-38995.733	504.811114	2349.000621
6	-149304.206	-38984.036	402.652998	448.163988
			5394.091212	5900.991451
			平均値=	506.900239
			標準値=	253.450119

2 LOT

元NO.	X	Y	(X-X <sub>0</sub> )(Y <sub>N-1</sub> -Y <sub>0</sub> )	(X <sub>N-1</sub> -X <sub>0</sub> )(Y-Y <sub>0</sub> )
X <sub>0</sub> Y <sub>0</sub>	-149300.000	-38900.000		
102	-149323.917	-38982.261		
16	-149329.861	-38982.325	2456.395721	1968.967025
40	-149329.946	-38983.718	2465.304450	2499.903198
28	-149330.513	-38994.324	2554.487334	2824.626504
27	-149324.537	-38994.658	2314.427988	2888.299554
102	-149323.917	-38982.261	2263.935386	2018.438157
			12054.550879	12200.234438
			平均値=	145.683559
			標準値=	72.841779

12 LOT

元NO.	X	Y	(X-X <sub>0</sub> )(Y <sub>N-1</sub> -Y <sub>0</sub> )	(X <sub>N-1</sub> -X <sub>0</sub> )(Y-Y <sub>0</sub> )
X <sub>0</sub> Y <sub>0</sub>	-149300.000	-38900.000		
100	-149325.163	-39006.311		
27	-149324.537	-38994.658	2608.553007	2381.879254
28	-149330.513	-38994.324	2888.299554	2314.427988
29	-149330.911	-39001.755	2915.649164	3104.850315
25	-149331.215	-39006.634	3176.282325	3296.163574
100	-149325.163	-39006.311	2683.231342	3318.497865
			14272.015392	14415.818996
			平均値=	143.803604
			標準値=	71.901802

13 LOT

元NO.	X	Y	(X-X <sub>0</sub> )(Y <sub>N-1</sub> -Y <sub>0</sub> )	(X <sub>N-1</sub> -X <sub>0</sub> )(Y-Y <sub>0</sub> )
X <sub>0</sub> Y <sub>0</sub>	-149300.000	-38900.000		
13	-149306.238	-39005.122		
14	-149305.333	-38995.733	560.615626	597.182454
27	-149324.537	-38994.658	2349.000621	504.811114
100	-149325.163	-39006.311	2381.879254	2608.553007
4	-149318.535	-39005.958	1970.474385	2666.221154
12	-149308.421	-39006.923	892.272318	1981.817805
13	-149306.238	-39005.122	666.985674	885.232362
			8821.227878	9243.817896
			ハ イノセキ=	422.590018
			ノセキ=	211.295009

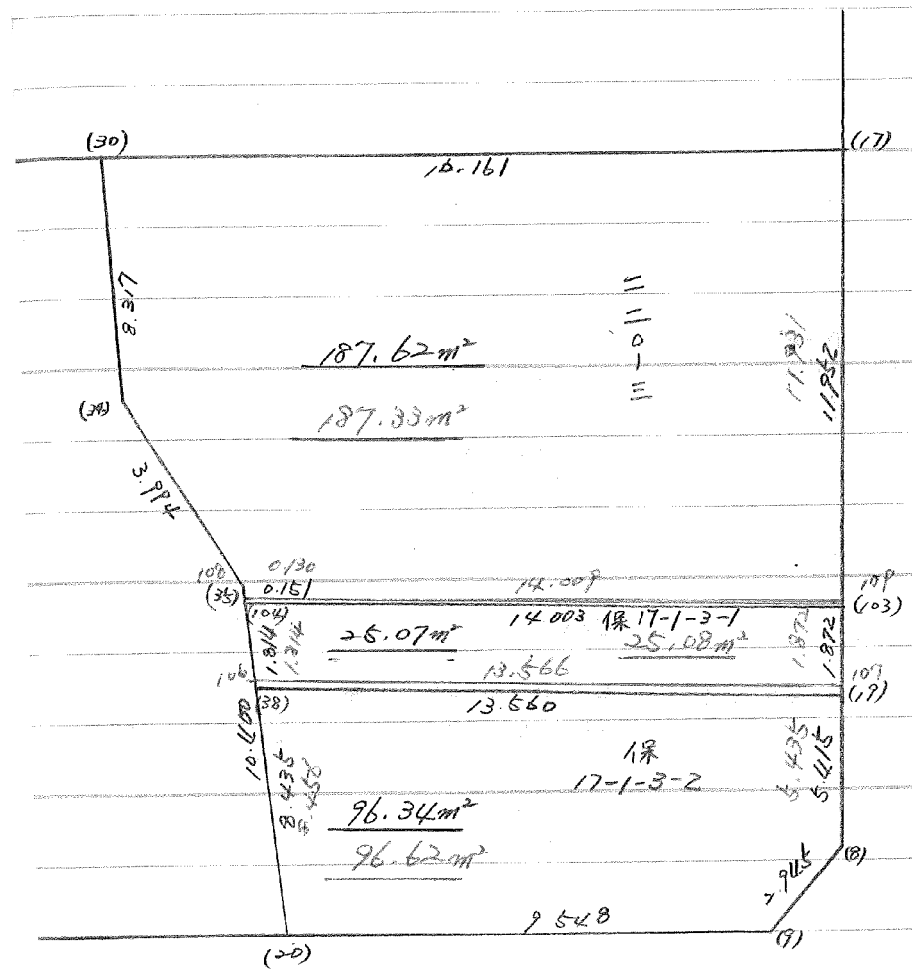
4 LOT

テリノ. X <sub>o</sub> Y <sub>o</sub>	X	Y	(X-X <sub>o</sub> ) (Y <sub>N-1</sub> -Y <sub>o</sub> )	(X <sub>N-1</sub> -X <sub>o</sub> ) (Y-Y <sub>o</sub> )
	-149300.000	-38900.000		
17	-149337.409	-38982.407		
103	-149349.360	-38982.537	4067.609520	3087.626633
104	-149349.522	-38996.539	4087.397314	4765.165040
35	-149349.375	-38996.574	4766.613125	4782.537628
34	-149345.726	-38998.199	4415.942724	4848.575625
33	-149344.322	-38998.261	4352.376078	4493.082486
30	-149337.417	-38998.568	3676.631837	4368.730896
17	-149337.409	-38982.407	3687.330312	3083.422719
			29053.900910	29429.141027
			h <sup>2</sup> イノセキ=	375.240117
			ノセキ=	187.620058

5 LOT

テリノ. X <sub>o</sub> Y <sub>o</sub>	X	Y	(X-X <sub>o</sub> ) (Y <sub>N-1</sub> -Y <sub>o</sub> )	(X <sub>N-1</sub> -X <sub>o</sub> ) (Y-Y <sub>o</sub> )
	-149300.000	-38900.000		
103	-149349.360	-38982.537		
19	-149351.232	-38982.557	4228.535584	4075.013520
38	-149351.286	-38996.117	4234.018302	4924.266144
37	-149349.718	-38996.492	4778.745006	4948.688712
104	-149349.522	-38996.539	4778.476824	4799.726002
103	-149349.360	-38982.537	4765.165040	4087.397314
			22784.940756	22835.891692
			h <sup>2</sup> イノセキ=	50.150936
			ノセキ=	25.075468

17-1 BLOCK



4 LOT

テロNO.	X	Y	(X-X <sub>0</sub> )(Y <sub>N-1</sub> -Y <sub>0</sub> )	(X <sub>N-1</sub> -X <sub>0</sub> )(Y-Y <sub>0</sub> )
X <sub>0</sub> Y <sub>0</sub>	-149300.000	-38900.000		
17	-149337.409	-38982.407		
109	-149349.339	-38982.536	4065.878973	3087.589224
108	-149349.501	-38996.544	4085.614536	4763.384416
35	-149349.375	-38996.574	4766.860000	4780.509574
34	-149345.726	-38998.199	4415.942724	4848.575625
30	-149337.417	-38998.568	3674.311983	4507.120368
17	-149337.409	-38982.407	3687.330312	3083.422719
			24695.938528	25070.601926
			ハ イ ク セキ =	374.663398
			ク セキ =	187.331699

5 LOT

テロNO.	X	Y	(X-X <sub>0</sub> )(Y <sub>N-1</sub> -Y <sub>0</sub> )	(X <sub>N-1</sub> -X <sub>0</sub> )(Y-Y <sub>0</sub> )
X <sub>0</sub> Y <sub>0</sub>	-149300.000	-38900.000		
109	-149349.339	-38982.536		
107	-149351.211	-38982.556	4226.751096	4073.230484
106	-149351.265	-38996.122	4232.233340	4922.503742
108	-149349.501	-38996.544	4758.135122	4949.328160
109	-149349.339	-38982.536	4763.384416	4085.614536
			17980.503974	18030.676922
			ハ イ ク セキ =	50.172948
			ク セキ =	25.086474

6 LOT

テロNO.	X	Y	(X-X <sub>0</sub> )(Y <sub>N-1</sub> -Y <sub>0</sub> )	(X <sub>N-1</sub> -X <sub>0</sub> )(Y-Y <sub>0</sub> )
X <sub>0</sub> Y <sub>0</sub>	-149300.000	-38900.000		
107	-149351.211	-38982.556		
8	-149356.646	-38982.615	4676.467176	4230.796765
9	-149358.792	-38984.632	4857.101080	4794.064272
20	-149359.490	-38994.154	5034.757680	5535.501968
106	-149351.265	-38996.122	4826.804810	5718.297780
107	-149351.211	-38982.556	4922.503742	4232.233340
			24317.634488	24510.894125
			ハ イ ク セキ =	193.259637
			ク セキ =	96.629818