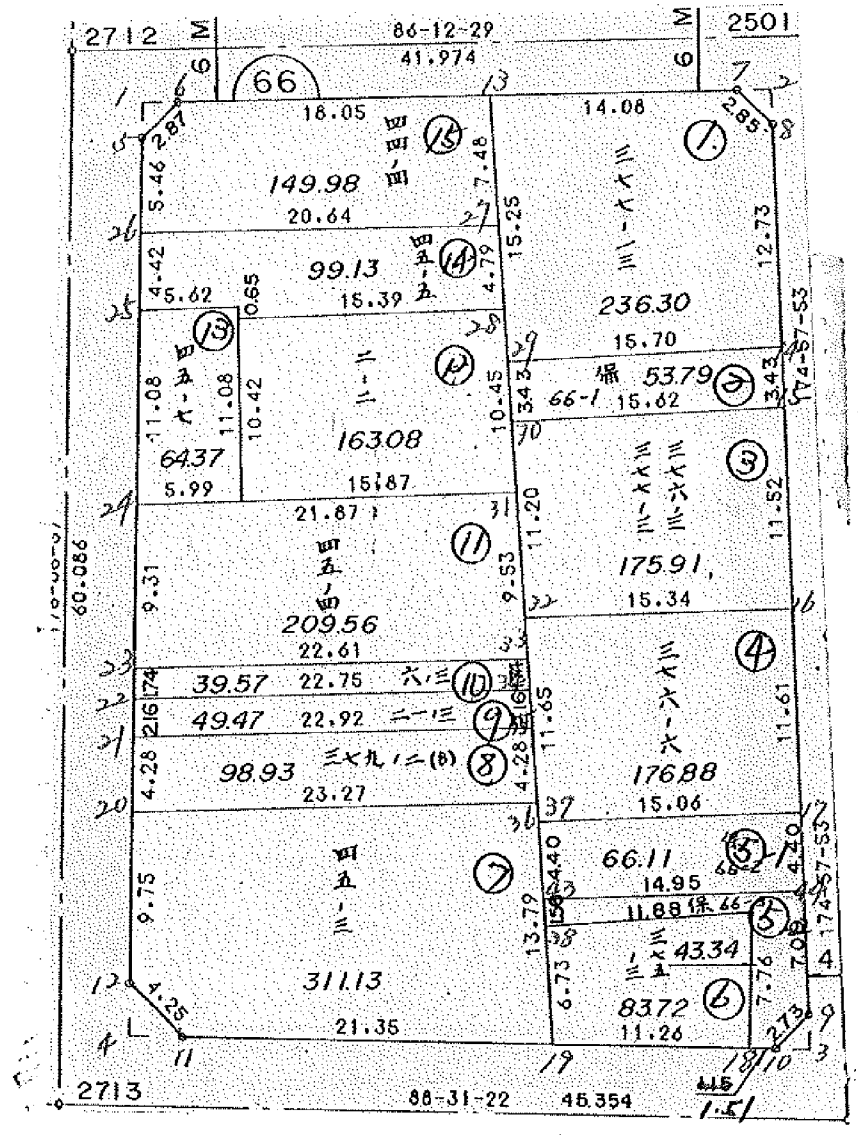


画地確定計算書

BLOCK NO. 66

保留地変更
258.1



BLOCK . LOT	KAKUHITSU MENSEKI	SUMIKIRI.SUIRO MENSEKI
66 BLOCK	2021.358947	
1 LOT	236.301501	
2 LOT	53.799099	
3 LOT	175.912599	
4 LOT	176.886763	
5 LOT	109.458796	
6 LOT	83.728152	
7 LOT	311.132047	
8 LOT	98.930969	
9 LOT	49.471006	
10 LOT	39.579725	
11 LOT	209.567987	
12 LOT	163.083082	
13 LOT	64.370408	
14 LOT	99.135546	
15 LOT	149.983198	
1 入三ナリ		1.999358
2 入三ナリ		1.999632
3 入三ナリ		1.995580
4 入三ナリ		4.499312
TOTAL =	2021.342383 2021.348678	10.493882

5-1 Lot 66.116313
5-2 Lot 23.346788



66 BLOCK

TENMEI	X	Y	(X-X0)*(YN-1-Y0)	(XN-1-X0)*(Y-Y0)
X0.Y0	- 150400.000	- 39100.000		
OS66-5	- 150479.714	- 39170.377		
OS66-6	- 150477.583	- 39168.447	+ 5460.058791	+ 5456.184158
OS66-7	- 150475.457	- 39136.382	+ 5164.805279	+ 2822.624706
OS66-8	- 150477.317	- 39134.210	+ 2812.947094	+ 2581.383970
OS66-9	- 150527.932	- 39129.751	+ 4376.553720	+ 2300.258067
OS66-10	- 150529.976	- 39131.574	+ 3866.915976	+ 4039.324968
OS66-11	- 150530.856	- 39165.693	+ 4131.647344	+ 8538.513368
OS66-12	- 150527.935	- 39168.791	+ 8404.433955	+ 9001.715096
OS66-5	- 150479.714	- 39170.377	+ 5483.605774	+ 9003.681495
			+ 39700.967933	+ 43743.685828
	BAI MENSEKI =		4042.717895	
	MENSEKI =		2021.358947	

1 LOT

TENMEI	X	Y	(X-X0)*(YN-1-Y0)	(XN-1-X0)*(Y-Y0)
X0.Y0	- 150400.000	- 39100.000		
OS66-7	- 150475.457	- 39136.382		
OS66-8	- 150477.317	- 39134.210	+ 2812.947094	+ 2581.383970
OS66-14	- 150490.007	- 39133.092	+ 3079.139470	+ 2558.574164
OS66-29	- 150491.552	- 39148.721	+ 3029.638784	+ 4385.231047
OS66-13	- 150476.389	- 39150.432	+ 3721.748469	+ 4617.150464
OS66-7	- 150475.457	- 39136.382	+ 3805.447424	+ 2779.184598
			+ 16448.921241	+ 16921.524243
	BAI MENSEKI =		472.603002	
	MENSEKI =		236.301501	

2 LOT

TENMEI	X	Y	(X-X0)*(YN-1-Y0)	(XN-1-X0)*(Y-Y0)
X0.Y0	- 150400.000	- 39100.000		
OS66-14	- 150490.007	- 39133.092		
OS66-15	- 150493.430	- 39132.790	+ 3091.785560	+ 2951.329530
OS66-30	- 150494.964	- 39148.336	+ 3113.869560	+ 4516.032480
OS66-29	- 150491.552	- 39148.721	+ 4425.257472	+ 4626.741044
OS66-14	- 150490.007	- 39133.092	+ 4385.231047	+ 3029.638784
			+ 15016.143639	+ 15123.741838
	BAI MENSEKI =		107.598199	
	MENSEKI =		53.799099	

3 LOT

TENMEI	X	Y	(X-X0)*(YN-1-Y0)	(XN-1-X0)*(Y-Y0)
X0.Y0	- 150400.000	- 39100.000		
OS66-15	- 150493.430	- 39132.790		
OS66-16	- 150504.906	- 39131.779	+ 3439.867740	+ 2969.111970

TENMEI	X	Y	(X-X0)*(YN-1-Y0)	(XN-1-X0)*(Y-Y0)
OS66-32	- 150506.098	- 39147.081	+ 3371.688342	+ 4939.079386
OS66-30	- 150494.964	- 39148.336	+ 4471.000084	+ 5128.352928
OS66-15	- 150493.430	- 39132.790	+ 4516.032480	+ 3113.869560
			+ 15798.588646	+ 16150.413844
		BAI MENSEKI =	351.825198	
		MENSEKI =	175.912599	

4 LOT

TENMEI	X	Y	(X-X0)*(YN-1-Y0)	(XN-1-X0)*(Y-Y0)
X0.Y0	- 150500.000	- 39100.000		
OS66-16	- 150504.906	- 39131.779		
OS66-17	- 150516.476	- 39130.760	+ 523.590804	+ 150.908560
OS66-37	- 150517.683	- 39145.774	+ 543.929080	+ 754.172424
OS66-32	- 150506.098	- 39147.081	+ 279.129852	+ 832.533323
OS66-16	- 150504.906	- 39131.779	+ 230.979386	+ 193.788342
			+ 1577.629122	+ 1931.402649
		BAI MENSEKI =	353.773527	
		MENSEKI =	176.886763	

5 LOT

TENMEI	X	Y	(X-X0)*(YN-1-Y0)	(XN-1-X0)*(Y-Y0)
X0.Y0	- 150500.000	- 39100.000		
OS66-17	- 150516.476	- 39130.760		
OS66-9	- 150527.932	- 39129.751	+ 859.188320	+ 490.177476
OS66-10	- 150529.976	- 39131.574	+ 891.815976	+ 881.924968
OS66-18	- 150530.015	- 39133.092	+ 947.693610	+ 991.965792
OS66-39	- 150522.250	- 39133.298	+ 736.297000	+ 999.439470
OS66-38	- 150523.618	- 39145.104	+ 786.432164	+ 1003.564000
OS66-37	- 150517.683	- 39145.774	+ 797.574032	+ 1081.090332
OS66-17	- 150516.476	- 39130.760	+ 754.172424	+ 543.929080
			+ 5773.173526	+ 5992.091118
		BAI MENSEKI =	218.917592	
		MENSEKI =	109.458796	

6 LOT

TENMEI	X	Y	(X-X0)*(YN-1-Y0)	(XN-1-X0)*(Y-Y0)
X0.Y0	- 150500.000	- 39100.000		
OS66-39	- 150522.250	- 39133.298		
OS66-18	- 150530.015	- 39133.092	+ 999.439470	+ 736.297000
OS66-19	- 150530.305	- 39144.350	+ 1002.853060	+ 1331.165250
OS66-38	- 150523.618	- 39145.104	+ 1047.458300	+ 1366.876720
OS66-39	- 150522.250	- 39133.298	+ 1003.564000	+ 786.432164

TENMEI	X	Y	(X-X0)*(YN-1-Y0)	(XN-1-X0)*(Y-Y0)
			+ 4053.314830	+ 4220.771134
		BAI MENSEKI =	167.456304	
		MENSEKI =	83.728152	

7 LOT

TENMEI	X	Y	(X-X0)*(YN-1-Y0)	(XN-1-X0)*(Y-Y0)
X0.Y0	- 150500.000	- 39100.000		
OS66-36	- 150516.598	- 39145.896		
OS66-19	- 150530.305	- 39144.350	+ 1390.878280	+ 736.121300
OS66-11	- 150530.856	- 39165.693	+ 1368.463600	+ 1990.826365
OS66-12	- 150527.935	- 39168.791	+ 1835.133955	+ 2122.615096
OS66-20	- 150518.185	- 39169.112	+ 1250.964335	+ 1930.643720
OS66-36	- 150516.598	- 39145.896	+ 1147.120976	+ 834.618760
			+ 6992.561146	+ 7614.825241
		BAI MENSEKI =	622.264095	
		MENSEKI =	311.132047	

8 LOT

TENMEI	X	Y	(X-X0)*(YN-1-Y0)	(XN-1-X0)*(Y-Y0)
X0.Y0	- 150500.000	- 39100.000		
OS66-35	- 150512.338	- 39146.377		
OS66-36	- 150516.598	- 39145.896	+ 769.765446	+ 566.264848
OS66-20	- 150518.185	- 39169.112	+ 834.618760	+ 1147.120976
OS66-21	- 150513.902	- 39169.253	+ 960.795024	+ 1259.365805
OS66-35	- 150512.338	- 39146.377	+ 854.443514	+ 644.733054
			+ 3419.622744	+ 3617.484683
		BAI MENSEKI =	197.861939	
		MENSEKI =	98.930969	

9 LOT

TENMEI	X	Y	(X-X0)*(YN-1-Y0)	(XN-1-X0)*(Y-Y0)
X0.Y0	- 150500.000	- 39100.000		
OS66-34	- 150510.184	- 39146.620		
OS66-35	- 150512.338	- 39146.377	+ 575.197560	+ 472.303368
OS66-21	- 150513.902	- 39169.253	+ 644.733054	+ 854.443514
OS66-22	- 150511.736	- 39169.324	+ 812.753208	+ 963.742248
OS66-34	- 150510.184	- 39146.620	+ 705.995616	+ 547.132320
			+ 2738.679438	+ 2837.621450
		BAI MENSEKI =	98.942012	
		MENSEKI =	49.471006	

10 LOT

TENMEI	X	Y	(X-X0)*(YN-1-Y0)	(XN-1-X0)*(Y-Y0)
X0.Y0	- 150500.000	- 39100.000		
OS66-33	- 150508.449	- 39146.816		
OS66-34	- 150510.184	- 39146.620	+ 476.774144	+ 393.892380
OS66-22	- 150511.736	- 39169.324	+ 547.132320	+ 705.995616
OS66-23	- 150509.991	- 39169.381	+ 692.616084	+ 814.255416
OS66-33	- 150508.449	- 39146.816	+ 586.200069	+ 467.738656
			+ 2302.722617	+ 2381.882068
		BAI MENSEKI =	79.159451	
		MENSEKI =	39.579725	

11 LOT

TENMEI	X	Y	(X-X0)*(YN-1-Y0)	(XN-1-X0)*(Y-Y0)
X0.Y0	- 150400.000	- 39100.000		
OS66-31	- 150498.970	- 39147.884		
OS66-33	- 150508.449	- 39146.816	+ 5192.971916	+ 4633.379520
OS66-23	- 150509.991	- 39169.381	+ 5149.338656	+ 7524.300069
OS66-24	- 150500.677	- 39169.687	+ 6985.070937	+ 7664.942817
OS66-31	- 150498.970	- 39147.884	+ 6896.922390	+ 4820.817468
			+ 24224.303899	+ 24643.439874
		BAI MENSEKI =	419.135975	
		MENSEKI =	209.567987	

12 LOT

TENMEI	X	Y	(X-X0)*(YN-1-Y0)	(XN-1-X0)*(Y-Y0)
X0.Y0	- 150400.000	- 39100.000		
OS66-28	- 150488.586	- 39149.056		
OS66-31	- 150498.970	- 39147.884	+ 4855.072320	+ 4241.852024
OS66-40	- 150500.209	- 39163.708	+ 4798.407756	+ 6305.180760
OS66-41	- 150489.810	- 39164.399	+ 5721.615480	+ 6453.359391
OS66-28	- 150488.586	- 39149.056	+ 5704.849814	+ 4405.719360
			+ 21079.945370	+ 21406.111535
		BAI MENSEKI =	326.166165	
		MENSEKI =	163.083082	

13 LOT

TENMEI	X	Y	(X-X0)*(YN-1-Y0)	(XN-1-X0)*(Y-Y0)
X0.Y0	- 150400.000	- 39100.000		
OS66-42	- 150489.153	- 39164.443		
OS66-40	- 150500.209	- 39163.708	+ 6457.768587	+ 5679.759324
OS66-24	- 150500.677	- 39169.687	+ 6413.930316	+ 6983.264583

TENMEI	X	Y	(X-X0)*(YN-1-Y0)	(XN-1-X0)*(Y-Y0)
OS66-25	- 150489.598	- 39170.051	+ 6243.815826	+ 7052.524527
OS66-42	- 150489.153	- 39164.443	+ 6245.256803	+ 5773.963914
			+ 25360.771532	+ 25489.512348
		BAI MENSEKI =	128.740816	
		MENSEKI =	64.370408	

14 LOT

TENMEI	X	Y	(X-X0)*(YN-1-Y0)	(XN-1-X0)*(Y-Y0)
X0.Y0	- 150400.000	- 39100.000		
OS66-27	- 150483.823	- 39149.593		
OS66-28	- 150488.586	- 39149.056	+ 4393.245498	+ 4112.021088
OS66-41	- 150489.810	- 39164.399	+ 4405.719360	+ 5704.849814
OS66-42	- 150489.153	- 39164.443	+ 5741.364047	+ 5787.625830
OS66-25	- 150489.598	- 39170.051	+ 5773.963914	+ 6245.256803
OS66-26	- 150485.178	- 39170.196	+ 5966.804078	+ 6289.421208
OS66-27	- 150483.823	- 39149.593	+ 5884.039308	+ 4224.232554
			+ 32165.136205	+ 32363.407297
		BAI MENSEKI =	198.271092	
		MENSEKI =	99.135546	

15 LOT

TENMEI	X	Y	(X-X0)*(YN-1-Y0)	(XN-1-X0)*(Y-Y0)
X0.Y0	- 150400.000	- 39100.000		
OS66-13	- 150476.389	- 39150.432		
OS66-27	- 150483.823	- 39149.593	+ 4227.361536	+ 3788.359677
OS66-26	- 150485.178	- 39170.196	+ 4224.232554	+ 5884.039308
OS66-5	- 150479.714	- 39170.377	+ 5595.603944	+ 5994.572106
OS66-6	- 150477.583	- 39168.447	+ 5460.058791	+ 5456.184158
OS66-13	- 150476.389	- 39150.432	+ 5228.597883	+ 3912.665856
			+ 24735.854708	+ 25035.821105
		BAI MENSEKI =	299.966397	
		MENSEKI =	149.983198	

1 入三#4

TENMEI	X	Y	(X-X0)*(YN-1-Y0)	(XN-1-X0)*(Y-Y0)
X0.Y0	- 150400.000	- 39100.000		
OS66-1	- 150477.715	- 39170.443		
OS66-5	- 150479.714	- 39170.377	+ 5615.293302	+ 5469.348555
OS66-6	- 150477.583	- 39168.447	+ 5460.058791	+ 5456.184158
OS66-1	- 150477.715	- 39170.443	+ 5319.358605	+ 5465.179269
			+ 16394.710698	+ 16390.711982
		BAI MENSEKI =	3.998716	
		MENSEKI =	1.999358	

2 入出

TENMEI	X	Y	(X-X0)*(YN-1-Y0)	(XN-1-X0)*(Y-Y0)
X0.Y0	- 150400.000	- 39100.000		
OS66-2	- 150475.325	- 39134.386		
OS66-7	- 150475.457	- 39136.382	+ 2594.664402	+ 2740.474150
OS66-8	- 150477.317	- 39134.210	+ 2812.947094	+ 2581.383970
OS66-2	- 150475.325	- 39134.386	+ 2576.868250	+ 2658.622362
			+ 7984.479746	+ 7980.480482
		BAI MENSEKI =	3.999264	
		MENSEKI =	1.999632	

3 入出

TENMEI	X	Y	(X-X0)*(YN-1-Y0)	(XN-1-X0)*(Y-Y0)
X0.Y0	- 150500.000	- 39100.000		
OS66-3	- 150529.924	- 39129.575		
OS66-9	- 150527.932	- 39129.751	+ 826.088900	+ 890.268924
OS66-10	- 150529.976	- 39131.574	+ 891.815976	+ 881.924968
OS66-3	- 150529.924	- 39129.575	+ 944.820376	+ 886.540200
			+ 2662.725252	+ 2658.734092
		BAI MENSEKI =	3.991160	
		MENSEKI =	1.995580	

4 入出

TENMEI	X	Y	(X-X0)*(YN-1-Y0)	(XN-1-X0)*(Y-Y0)
X0.Y0	- 150500.000	- 39100.000		
OS66-4	- 150530.933	- 39168.692		
OS66-11	- 150530.856	- 39165.693	+ 2119.560352	+ 2032.081569
OS66-12	- 150527.935	- 39168.791	+ 1835.133955	+ 2122.615096
OS66-4	- 150530.933	- 39168.692	+ 2127.912003	+ 1918.911020
			+ 6082.606310	+ 6073.607685
		BAI MENSEKI =	8.998625	
		MENSEKI =	4.499312	

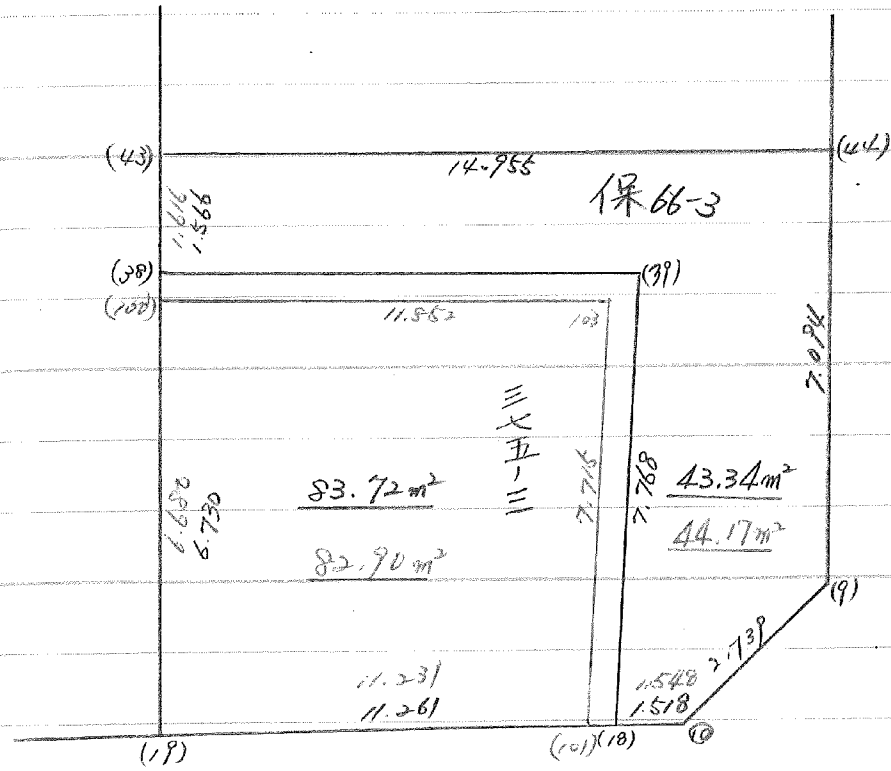
57 LOT

NO.	X	Y	(X-X ₀)(Y _{N-1} -Y ₀)	(X _{N-1} -X ₀)(Y-Y ₀)
17	-150500.000	-39100.000		
44	-150516.476	-39130.760		
43	-150522.062	-39145.280	641.807400	500.425548
37	-150517.683	-39145.774	670.089126	944.767200
17	-150516.476	-39130.760	800.686240	1009.865988
			754.172424	543.929080
			2866.755190	2998.987816
			平均値=	132.232626
			分散=	66.116313

57 LOT

NO.	X	Y	(X-X ₀)(Y _{N-1} -Y ₀)	(X _{N-1} -X ₀)(Y-Y ₀)
44	-150500.000	-39100.000		
9	-150520.865	-39130.373		
10	-150527.932	-39129.751	848.378636	620.754615
18	-150529.976	-39131.574	891.815976	881.924958
39	-150530.015	-39133.092	947.693610	991.965792
38	-150522.250	-39133.298	736.297000	999.439470
43	-150523.618	-39145.104	786.432164	1003.564000
44	-150522.062	-39145.280	995.084448	1069.423040
44	-150520.865	-39130.373	944.767200	670.089126
			6150.469034	6237.161011
			平均値=	86.691977
			分散=	43.345988

66 Block



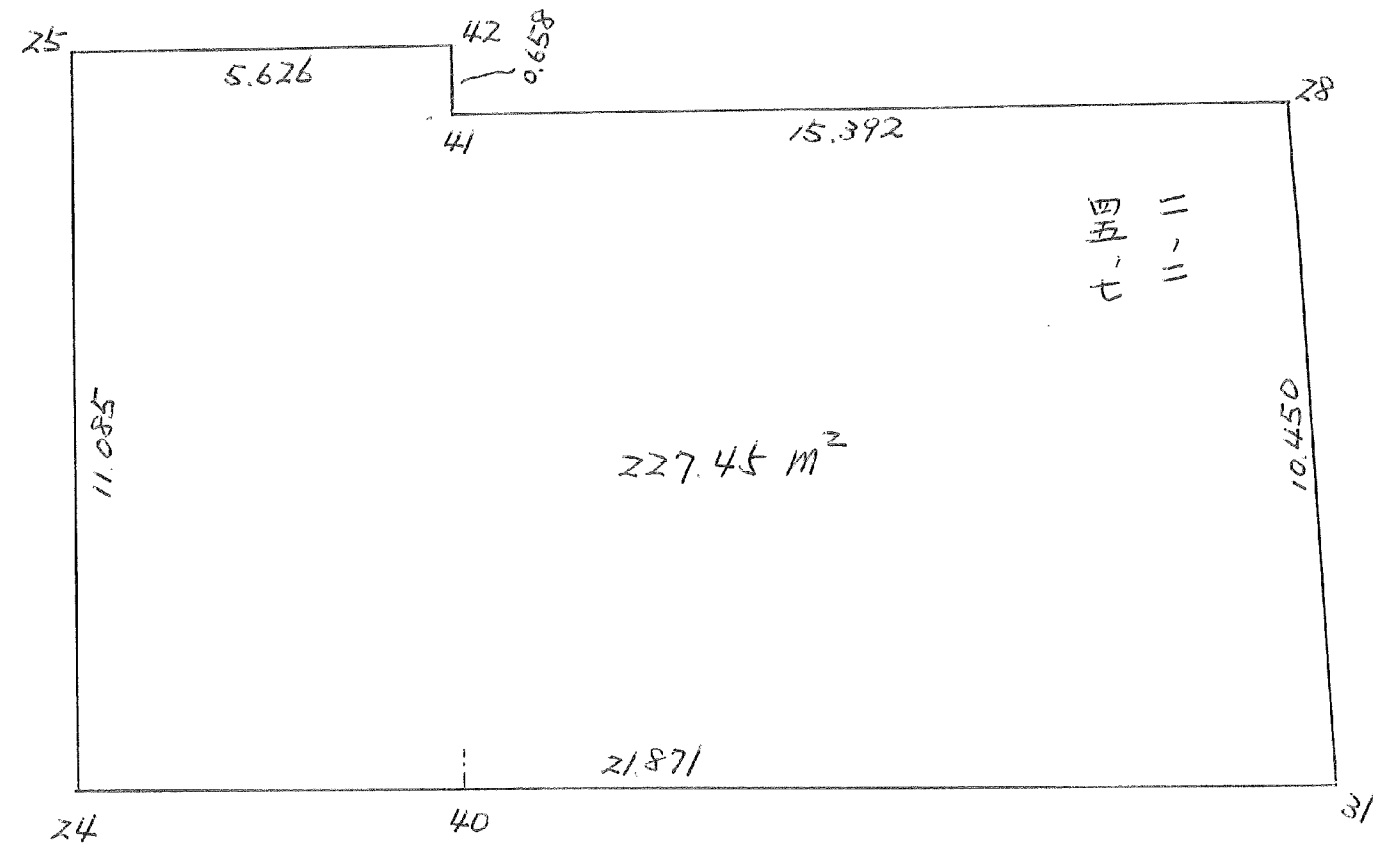
5-2 LOT

チノNO. X _o Y _o	X	Y	(X-X _o)(YN-1-Y _o)	(XN-1-X _o)(Y-Y _o)
43	-150500.000	-39100.000		
44	-150522.062	-39145.280	944.767200	670.089126
9	-150520.865	-39130.373	848.378636	620.754615
10	-150527.932	-39129.751	891.815976	881.924968
101	-150529.976	-39131.574	947.725184	992.835096
103	-150530.016	-39133.121	738.730784	1000.313216
100	-150522.304	-39133.326	788.759768	1005.888096
43	-150523.668	-39145.099	994.974138	1071.687040
			6155.151686	6243.492157
			マンセキ=	88.340471
			マンセキ=	44.170235

6 LOT

チノNO. X _o Y _o	X	Y	(X-X _o)(YN-1-Y _o)	(XN-1-X _o)(Y-Y _o)
100	-150500.000	-39100.000		
103	-150523.668	-39145.099	1005.888096	788.759768
101	-150522.304	-39133.326	1000.313216	738.730784
19	-150530.016	-39133.121	1003.731905	1331.209600
100	-150530.305	-39144.350	1049.675800	1366.725195
			4059.609017	4225.425347
			マンセキ=	165.816330
			マンセキ=	82.908165

BN0,66



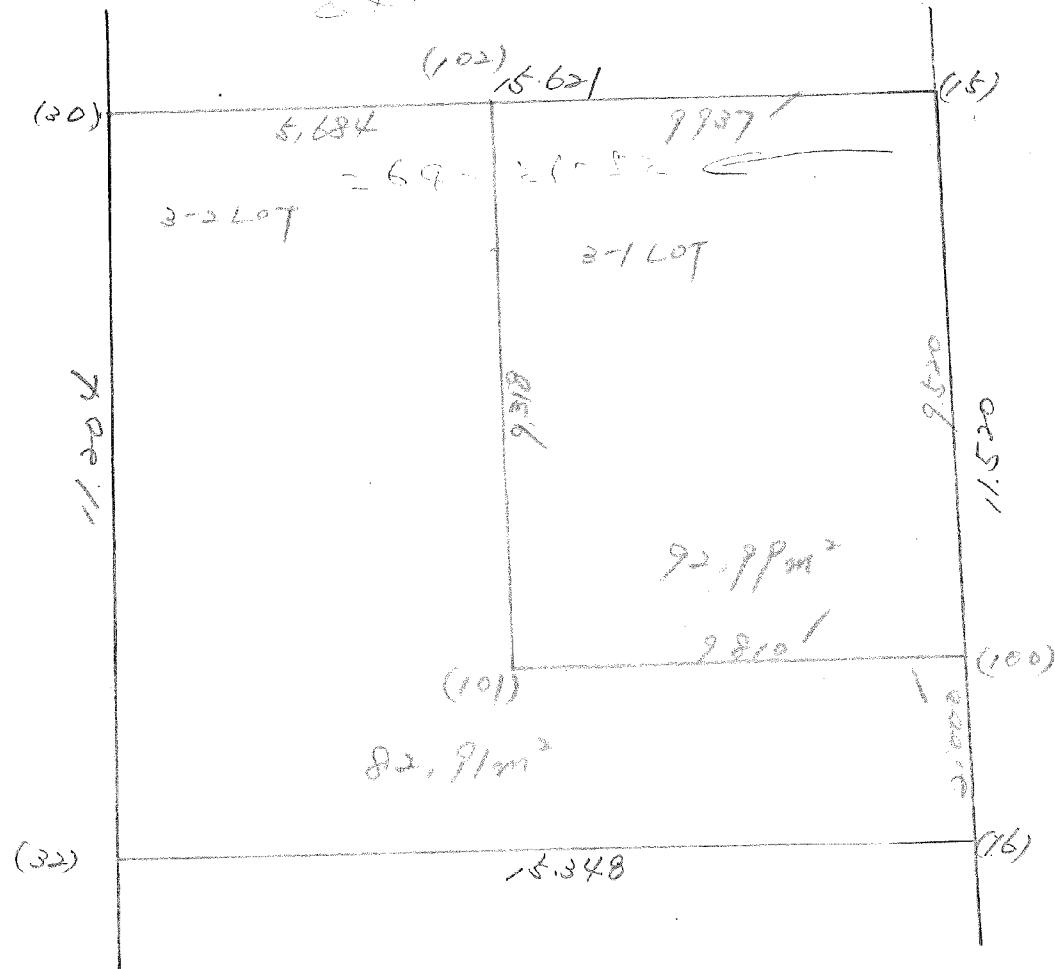
66 BLOCK

元NO. X ₀ , Y ₀ =	X	Y	(X-X ₀)(Y _{N-1} -Y ₀)	(X _{N-1} -X ₀)(Y-Y ₀)
	-150400.000	-39100.000		
25	-150489.598	-39170.051		
42	-150489.153	-39164.443	6245.256803	5773.963914
41	-150489.810	-39164.399	5787.625830	5741.364047
28	-150488.586	-39149.056	5704.849814	4405.719360
31	-150498.970	-39147.884	4855.072320	4241.852024
40	-150500.209	-39163.708	4798.407756	6305.180760
24	-150500.677	-39169.687	6413.930316	6983.264583
25	-150489.598	-39170.051	6243.815826	7052.524527
			40048.958665	40503.869215
			平均値=	454.910550
			分散=	227.455275

66 BLOCK

№ 20

88-21-55



3-1 LOT

チノNO. X ₀ Y ₀	X	Y	(X-X ₀) (Y _{N-1} -Y ₀)	(X _{N-1} -X ₀) (Y-Y ₀)
15	-150493.430	-39132.790		
100	-150502.914	-39131.955	3374.550060	2985.555650
101	-150503.676	-39141.735	3312.966580	4295.115790
102	-150494.406	-39142.679	3940.034410	4424.788004
15	-150493.430	-39132.790	3987.498970	3095.572740
			14615.050020	14801.032184
			イノセキ=	185.982164
			ノセキ=	92.991082

3-2 LOT

チノNO. X ₀ Y ₀	X	Y	(X-X ₀) (Y _{N-1} -Y ₀)	(X _{N-1} -X ₀) (Y-Y ₀)
102	-150494.406	-39142.679		
101	-150503.676	-39141.735	4424.788004	3940.034410
100	-150502.914	-39131.955	4295.115790	3312.966580
16	-150504.906	-39131.779	3352.271230	3270.504006
32	-150506.098	-39147.081	3371.688342	4939.079386
30	-150494.964	-39148.336	4471.000084	5128.352928
102	-150494.406	-39142.679	4563.208416	4052.968556
			24478.071866	24643.905866
			イノセキ=	165.834000
			ノセキ=	82.917000