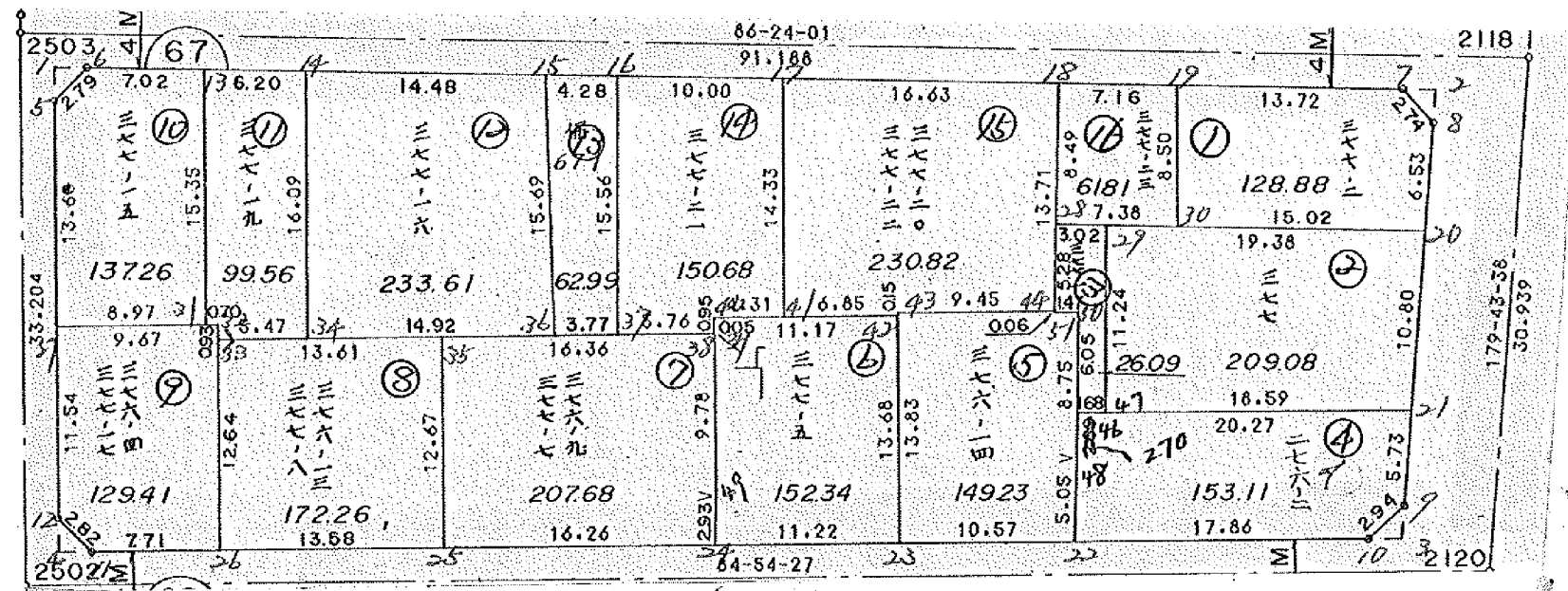


画地確定計算書

BLOCK NO. 67



BLOCK . LOT

KAKUHITSU MENSEKI

SUMIKIRI, SUIRO MENSEKI

67 BLOCK

2304.758902

1 LOT	128.884449
2 LOT	209.085525
3 LOT	26.092292
4 LOT	153.114845
5 LOT	149.231058
6 LOT	152.347414
7 LOT	207.689791
8 LOT	180.850666
9 LOT	120.837388
10 LOT	138.142839
11 LOT	98.687436
12 LOT	233.292511
13 LOT	63.341167
14 LOT	150.684095
15 LOT	230.829241
16 LOT	61.810236

172.263623

129.417585

137.266741

99.564658

233.610902

62.993056

保留地調整の為変更

1 入三井
2 入三井
3 入三井
4 入三井

1.999104
1.996630
1.992890
1.999696

2304.885510

TOTAL =

~~2304.758902~~
2304.885510

7.988320

67 BLOCK

TENMEI	X	Y	(X-X0)*(YN-1-Y0)	(XN-1-X0)*(Y-Y0)
X0.Y0	- 150400.000	- 39000.000		
OS67-5	- 150477.144	- 39130.208		
OS67-6	- 150475.026	- 39128.388	+ 9768.985408	+ 9904.363872
OS67-7	- 150470.034	- 39049.029	+ 8991.525192	+ 3678.449754
OS67-8	- 150471.908	- 39047.023	+ 3525.577332	+ 3293.208782
OS67-9	- 150494.980	- 39046.914	+ 4466.244540	+ 3373.491912
OS67-10	- 150497.158	- 39048.896	+ 4558.070412	+ 4644.142080
OS67-11	- 150504.013	- 39125.834	+ 5085.819648	+ 12225.779772
OS67-12	- 150502.199	- 39128.002	+ 12860.108966	+ 13313.872026
OS67-5	- 150477.144	- 39130.208	+ 9874.586288	+ 13307.127392
			+ 59130.917786	+ 63740.435590
		BAI MENSEKI =	4609.517804	
		MENSEKI =	2304.758902	

1 LOT

TENMEI	X	Y	(X-X0)*(YN-1-Y0)	(XN-1-X0)*(Y-Y0)
X0.Y0	- 150400.000	- 39000.000		
OS67-7	- 150470.034	- 39049.029		
OS67-8	- 150471.908	- 39047.023	+ 3525.577332	+ 3293.208782
OS67-20	- 150478.445	- 39046.992	+ 3688.719235	+ 3379.100736
OS67-30	- 150479.369	- 39061.990	+ 3729.708048	+ 4862.805550
OS67-19	- 150470.895	- 39062.724	+ 4394.781050	+ 4978.341156
OS67-7	- 150470.034	- 39049.029	+ 4392.812616	+ 3475.910955
			+ 19731.598281	+ 19989.367179
		BAI MENSEKI =	257.768898	
		MENSEKI =	128.884449	

~~2 LOT~~

TENMEI	X	Y	(X-X0)*(YN-1-Y0)	(XN-1-X0)*(Y-Y0)
X0.Y0	- 150400.000	- 39000.000		
OS67-20	- 150478.445	- 39046.992		
OS67-21	- 150489.246	- 39046.941	+ 4193.848032	+ 3682.286745
OS67-47	- 150490.851	- 39065.465	+ 4264.636791	+ 5842.489390
OS67-29	- 150479.637	- 39066.340	+ 5213.436205	+ 6027.055340
OS67-20	- 150478.445	- 39046.992	+ 5204.041300	+ 3742.301904
			+ 18875.962328	+ 19294.133379
		BAI MENSEKI =	418.171051	
		MENSEKI =	209.085525	

3 LOT

TENMEI	X	Y	(X-X0)*(YN-1-Y0)	(XN-1-X0)*(Y-Y0)
X0.Y0	- 150400.000	- 39000.000		
OS67-29	- 150479.637	- 39066.340		
OS67-47	- 150490.851	- 39065.465	+ 6027.055340	+ 5213.436205

TENMEI	X	Y	(X-X0)*(YN-1-Y0)	(XN-1-X0)*(Y-Y0)
OS67-46	- 150490.996	- 39067.144	+ 5957.053140	+ 6100.099544
OS67-50	- 150484.959	- 39067.561	+ 5704.487096	+ 6147.780756
OS67-51	- 150485.095	- 39069.034	+ 5749.103295	+ 5865.059606
OS67-28	- 150479.823	- 39069.357	+ 5510.500982	+ 5901.933915
OS67-29	- 150479.637	- 39066.340	+ 5523.383409	+ 5295.457820
			+ 34471.583262	+ 34523.767846
		BAI MENSEKI =	52.184584	
		MENSEKI =	26.092292	

4 LOT

TENMEI	X	Y	(X-X0)*(YN-1-Y0)	(XN-1-X0)*(Y-Y0)
X0.Y0	- 150400.000	- 39000.000		
OS67-21	- 150489.246	- 39046.941		
OS67-9	- 150494.980	- 39046.914	+ 4458.456180	+ 4186.886844
OS67-10	- 150497.158	- 39048.896	+ 4558.070412	+ 4644.142080
OS67-22	- 150498.744	- 39066.693	+ 4828.186624	+ 6479.758494
OS67-48	- 150493.692	- 39066.958	+ 6248.600556	+ 6611.700752
OS67-46	- 150490.996	- 39067.144	+ 6092.910168	+ 6290.855648
OS67-21	- 150489.246	- 39046.941	+ 5992.333424	+ 4271.443236
			+ 32178.557364	+ 32484.787054
		BAI MENSEKI =	306.229690	
		MENSEKI =	153.114845	

5 LOT

TENMEI	X	Y	(X-X0)*(YN-1-Y0)	(XN-1-X0)*(Y-Y0)
X0.Y0	- 150400.000	- 39000.000		
OS67-22	- 150498.744	- 39066.693		
OS67-23	- 150499.683	- 39077.228	+ 6648.158319	+ 7625.801632
OS67-43	- 150485.902	- 39078.450	+ 6634.039656	+ 7820.131350
OS67-44	- 150485.035	- 39069.038	+ 6670.995750	+ 5930.502276
OS67-51	- 150485.095	- 39069.034	+ 5874.788610	+ 5870.306190
OS67-50	- 150484.959	- 39067.561	+ 5865.059606	+ 5749.103295
OS67-48	- 150493.692	- 39066.958	+ 6329.925212	+ 5688.684722
OS67-22	- 150498.744	- 39066.693	+ 6611.700752	+ 6248.600556
			+ 44634.667905	+ 44933.130021
		BAI MENSEKI =	298.462116	
		MENSEKI =	149.231058	

6 LOT

TENMEI	X	Y	(X-X0)*(YN-1-Y0)	(XN-1-X0)*(Y-Y0)
X0.Y0	- 150400.000	- 39000.000		
OS67-23	- 150499.683	- 39077.228		
OS67-24	- 150500.680	- 39088.411	+ 7775.315040	+ 8813.073713

TENMEI	X	Y	(X-X0)*(YN-1-Y0)	(XN-1-X0)*(Y-Y0)
OS67-49	- 150497.745	- 39088.572	+ 8641.733195	+ 8917.428960
OS67-39	- 150488.003	- 39089.431	+ 7794.601716	+ 8741.433095
OS67-38	- 150488.008	- 39089.481	+ 7870.643448	+ 7874.596443
OS67-40	- 150487.060	- 39089.568	+ 7790.215860	+ 7882.700544
OS67-42	- 150486.056	- 39078.436	+ 7707.863808	+ 6828.638160
OS67-23	- 150499.683	- 39077.228	+ 7818.735788	+ 6645.932768
			+ 55399.108855	+ 55703.803683
		BAI MENSEKI =	304.694828	
		MENSEKI =	152.347414	変更後の資料なし

7 LOT

TENMEI	X	Y	(X-X0)*(YN-1-Y0)	(XN-1-X0)*(Y-Y0)
X0.Y0	- 150400.000	- 39000.000		
OS67-24	- 150500.680	- 39088.411		
OS67-25	- 150502.124	- 39104.614	+ 9028.884964	+ 10532.537520
OS67-35	- 150489.494	- 39105.732	+ 9362.325316	+ 10797.774768
OS67-39	- 150488.003	- 39089.431	+ 9304.733196	+ 8003.537914
OS67-49	- 150497.745	- 39088.572	+ 8741.433095	+ 7794.601716
OS67-24	- 150500.680	- 39088.411	+ 8917.428960	+ 8641.733195
			+ 45354.805531	+ 45770.185113
		BAI MENSEKI =	415.379582	
		MENSEKI =	207.689791	変更後の資料なし

8 LOT

TENMEI	X	Y	(X-X0)*(YN-1-Y0)	(XN-1-X0)*(Y-Y0)
X0.Y0	-150400.000	-39100.000		
OS67-25	-150502.124	-39104.614		
OS67-26	-150503.330	-39118.150	476.764620	1853.550600
OS67-33	-150490.735	-39119.293	1646.840250	1993.545690
OS67-35	-150489.494	-39105.732	1726.607742	520.093020
OS67-25	-150502.124	-39104.614	585.374768	412.925316
			4435.567380	4780.114626
			バイメンセキ=	344.527246
			メンセキ=	172.263623

9 LOT

TENMEI	X	Y	(X-X0)*(YN-1-Y0)	(XN-1-X0)*(Y-Y0)
X0.Y0	-150400.000	-39100.000		
OS67-26	-150503.330	-39118.150		
OS67-11	-150504.013	-39125.834	1887.835950	2669.427220
OS67-12	-150502.199	-39128.002	2640.208966	2912.572026
OS67-27	-150490.701	-39129.015	2539.809402	2965.303985

TENMEI	X	Y	(X-X0)*(YN-1-Y0)	(XN-1-X0)*(Y-Y0)
OS67-32	-150489.822	-39119.377	2606.185330	1757.513277
OS67-33	-150490.735	-39119.293	1758.172095	1732.935846
OS67-26	-150503.330	-39118.150	1993.545670	1646.840250
			13425.757433	13684.592604
			平均値=	258.835171
			標準値=	129.417585

10 LOT

TENMEI	X	Y	(X-Xc)(YN-1-Yc)	(XN-1-Xc)(Y-Yc)
X0.Y0	-150400.000	-39100.000		
OS67-27	-150490.701	-39129.015		
OS67-5	-150477.144	-39130.208	2238.333160	2739.895808
OS67-6	-150475.026	-39128.388	2266.385408	2189.963872
OS67-13	-150474.585	-39121.381	2117.318980	1604.130906
OS67-31	-150489.886	-39120.080	1921.852566	1497.666800
OS67-27	-150490.701	-39129.015	1821.276080	2608.042290
			10365.166194	10639.699676
			平均値=	274.533482
			標準値=	137.266741

11 LOT

TENMEI	X	Y	(X-Xc)(YN-1-Yc)	(XN-1-Xc)(Y-Yc)
X0.Y0	-150400.000	-39100.000		
OS67-13	-150474.585	-39121.381		
OS67-14	-150474.196	-39115.192	1586.384676	1133.095320
OS67-34	-150490.236	-39113.844	1370.865312	1027.169424
OS67-33	-150490.735	-39119.293	1256.135340	1740.923148
OS67-32	-150489.822	-39119.377	1732.935846	1758.172095
OS67-31	-150489.886	-39120.080	1741.721022	1803.625760
OS67-13	-150474.585	-39121.381	1497.666800	1921.852566
			9185.708976	9384.838313
			平均値=	199.129317
			標準値=	99.564658

12 LOT

TENMEI	X	Y	(X-X0)*(YN-1-Y0)	(XN-1-X0)*(Y-Y0)
X0.Y0	- 150400.000	- 39000.000		
OS67-14	- 150474.196	- 39115.192		
OS67-15	- 150473.288	- 39100.762	8442.191296	+ 7476.137352
OS67-36	- 150488.879	- 39099.000	+ 8955.625798	+ 7255.512000
OS67-34	- 150490.236	- 39113.844	+ 8933.364000	+ 10118.340876
OS67-14	- 150474.196	- 39115.192	+ 8446.769424	+ 10394.465312

TENMEI	X	Y	(X-X0)*(YN-1-Y0)	(XN-1-X0)*(Y-Y0)
			+ 34777.950518	+ 35244.455540
		BAI MENSEKI =	466.505022	
		MENSEKI =	233.252511	

13 LOT

TENMEI	X	Y	(X-X0)*(YN-1-Y0)	(XN-1-X0)*(Y-Y0)
X0.Y0	- 150400.000	- 39000.000		
OS67-15	- 150473.288	- 39100.762		
OS67-16	- 150473.017	- 39096.459	+ 7357.338954	+ 7069.287192
OS67-37	- 150488.533	- 39095.217	+ 8539.804647	+ 6952.459689
OS67-36	- 150488.879	- 39099.000	+ 8462.791743	+ 8764.767000
OS67-15	- 150473.288	- 39100.762	+ 7255.512000	+ 8955.625798
			+ 31615.447344	+ 31742.139679
		BAI MENSEKI =	126.692335	
		MENSEKI =	63.346167	

14 LOT

TENMEI	X	Y	(X-X0)*(YN-1-Y0)	(XN-1-X0)*(Y-Y0)
X0.Y0	- 150400.000	- 39000.000		
OS67-16	- 150473.017	- 39096.459		
OS67-17	- 150472.389	- 39086.477	+ 6982.570551	+ 6314.291109
OS67-41	- 150486.672	- 39085.267	+ 7495.134544	+ 6172.392863
OS67-40	- 150487.060	- 39089.568	+ 7423.345020	+ 7763.037696
OS67-38	- 150488.008	- 39089.481	+ 7882.700544	+ 7790.215860
OS67-37	- 150488.533	- 39095.217	+ 7922.021373	+ 8379.857736
OS67-16	- 150473.017	- 39096.459	+ 6952.459689	+ 8539.804647
			+ 44658.231721	+ 44959.599911
		BAI MENSEKI =	301.368190	
		MENSEKI =	150.684095	

15 LOT

TENMEI	X	Y	(X-X0)*(YN-1-Y0)	(XN-1-X0)*(Y-Y0)
X0.Y0	- 150400.000	- 39000.000		
OS67-17	- 150472.389	- 39086.477		
OS67-18	- 150471.345	- 39069.875	+ 6169.701565	+ 5058.181375
OS67-44	- 150485.035	- 39069.038	+ 5941.820625	+ 4925.516110
OS67-43	- 150485.902	- 39078.450	+ 5930.502276	+ 6670.995750
OS67-42	- 150486.056	- 39078.436	+ 6751.093200	+ 6737.809272
OS67-41	- 150486.672	- 39085.267	+ 6798.204992	+ 7337.736952
OS67-17	- 150472.389	- 39086.477	+ 6172.392863	+ 7495.134544
			+ 37763.715521	+ 58225.374003
		BAI MENSEKI =	461.658482	
		MENSEKI =	230.829241	

16 LOT

TENMEI	X	Y	(X-X0)*(YN-1-Y0)	(XN-1-X0)*(Y-Y0)
X0.Y0	- 150400.000	- 39000.000		
OS67-18	- 150471.345	- 39069.875		
OS67-19	- 150470.895	- 39062.724	+ 4953.788125	+ 4475.043780
OS67-30	- 150479.369	- 39061.990	+ 4978.341156	+ 4394.781050
OS67-28	- 150479.823	- 39069.357	+ 4948.227770	+ 5504.795733
OS67-18	- 150471.345	- 39069.875	+ 4948.275165	+ 5577.632125
			+ 19828.632216	+ 19952.252688
		BAI MENSEKI =	123.620472	
		MENSEKI =	61.810236	

1 入三キリ

TENMEI	X	Y	(X-X0)*(YN-1-Y0)	(XN-1-X0)*(Y-Y0)
X0.Y0	- 150400.000	- 39100.000		
OS67-1	- 150475.152	- 39130.384		
OS67-5	- 150477.144	- 39130.208	+ 2343.943296	+ 2270.191616
OS67-6	- 150475.026	- 39128.388	+ 2266.385408	+ 2189.963872
OS67-1	- 150475.152	- 39130.384	+ 2133.414976	+ 2279.589984
			+ 6743.743680	+ 6739.745472
		BAI MENSEKI =	3.998208	
		MENSEKI =	1.999104	

2 入三キリ

TENMEI	X	Y	(X-X0)*(YN-1-Y0)	(XN-1-X0)*(Y-Y0)
X0.Y0	- 150400.000	- 39000.000		
OS67-2	- 150469.908	- 39047.033		
OS67-7	- 150470.034	- 39049.029	+ 3293.909122	+ 3427.519332
OS67-8	- 150471.908	- 39047.023	+ 3525.577332	+ 3293.208782
OS67-2	- 150469.908	- 39047.033	+ 3287.283884	+ 3382.048964
			+ 10106.770338	+ 10102.777078
		BAI MENSEKI =	3.993260	
		MENSEKI =	1.996630	

3 入三キリ

TENMEI	X	Y	(X-X0)*(YN-1-Y0)	(XN-1-X0)*(Y-Y0)
X0.Y0	- 150400.000	- 39000.000		
OS67-3	- 150496.980	- 39046.904		
OS67-9	- 150494.980	- 39046.914	+ 4454.941920	+ 4549.719720
OS67-10	- 150497.158	- 39048.896	+ 4558.070412	+ 4644.142080
OS67-3	- 150496.980	- 39046.904	+ 4741.934080	+ 4557.098832
			+ 13754.946412	+ 13750.960632
		BAI MENSEKI =	3.985780	
		MENSEKI =	1.992890	

* * * * * M E N S E K I K E I S A N * * * * *

4 入付

TENMEI	X	Y	(X-X0)*(YN-1-Y0)	(XN-1-X0)*(Y-Y0)
X0.Y0	= 150500.000	= 39100.000		
OS67-4	= 150504.191	= 39127.826		
OS67-11	= 150504.013	= 39125.834	+ 111.665738	+ 108.270294
OS67-12	= 150502.199	= 39128.002	+ 56.808966	+ 112.372026
OS67-4	= 150504.191	= 39127.826	+ 117.356382	+ 61.189374
			+ 285.831086	+ 281.831694
		BAI MENSEKI =	3.999392	
		MENSEKI =	1.999696	

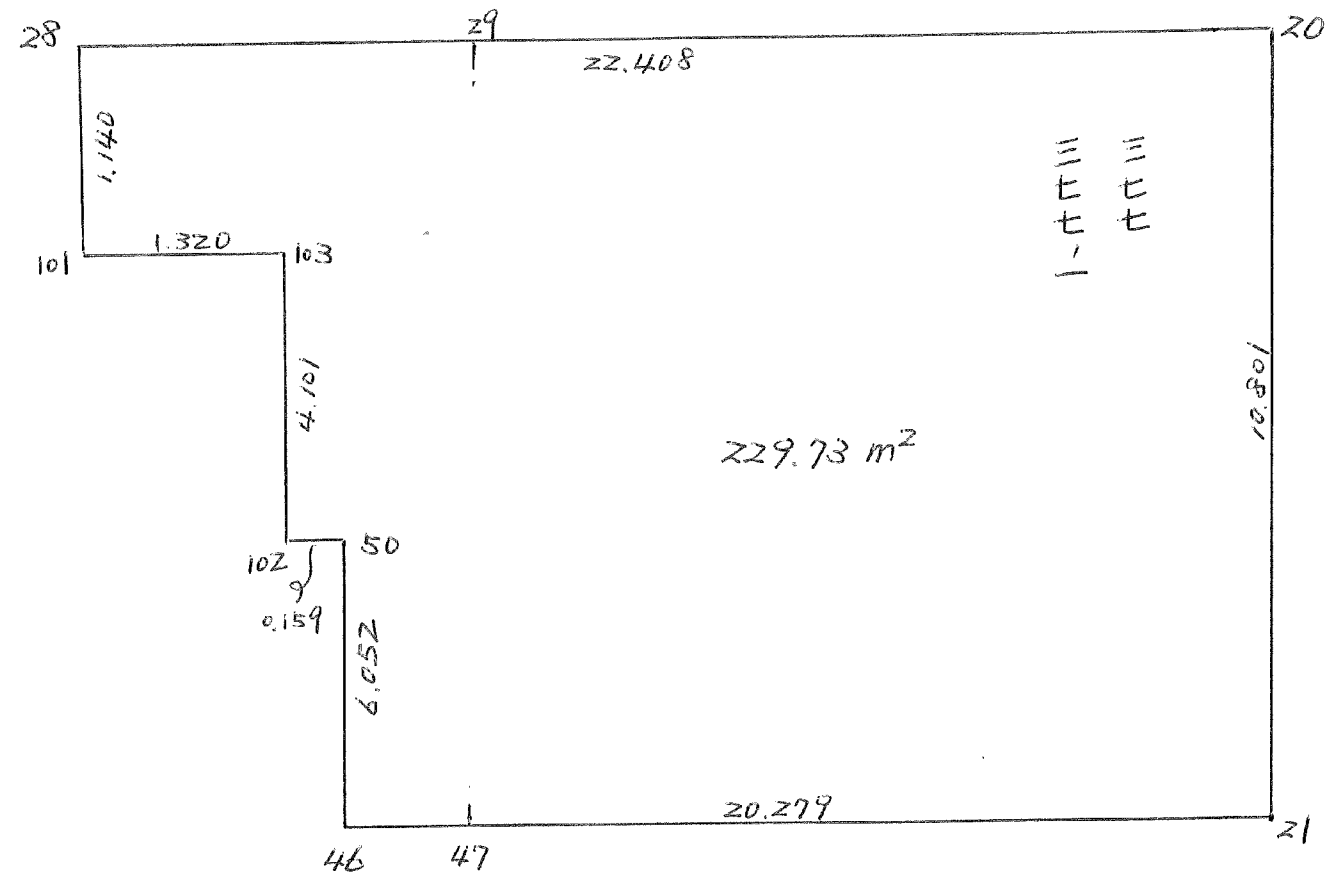
12 LOT

元NO. X _o Y _o	X	Y	(X-X _o) (YN-1-Y _o)	(XN-1-X _o) (Y-Y _o)
15	-150400.000	-39000.000		
36	-150473.286	-39100.739		
34	-150488.877	-39098.978	8953.380103	7253.701708
14	-150490.236	-39113.844	8931.378808	10118.113188
15	-150474.196	-39115.192	8446.769424	10394.465312
15	-150473.286	-39100.739	8441.960912	7474.430844
			34773.489247	35240.711052
			平均イタビキ=	467.221805
			ズビキ=	233.610902

13 LOT

元NO. X _o Y _o	X	Y	(X-X _o) (YN-1-Y _o)	(XN-1-X _o) (Y-Y _o)
16	-150400.000	-39000.000		
37	-150473.017	-39096.459		
36	-150488.533	-39095.217	8539.804647	6952.459689
15	-150488.877	-39098.978	8462.601309	8762.819274
16	-150473.286	-39100.739	7253.701708	8953.380103
16	-150473.017	-39096.459	7355.659563	7069.094274
			31611.767227	31737.753340
			平均イタビキ=	125.986113
			ズビキ=	62.993056

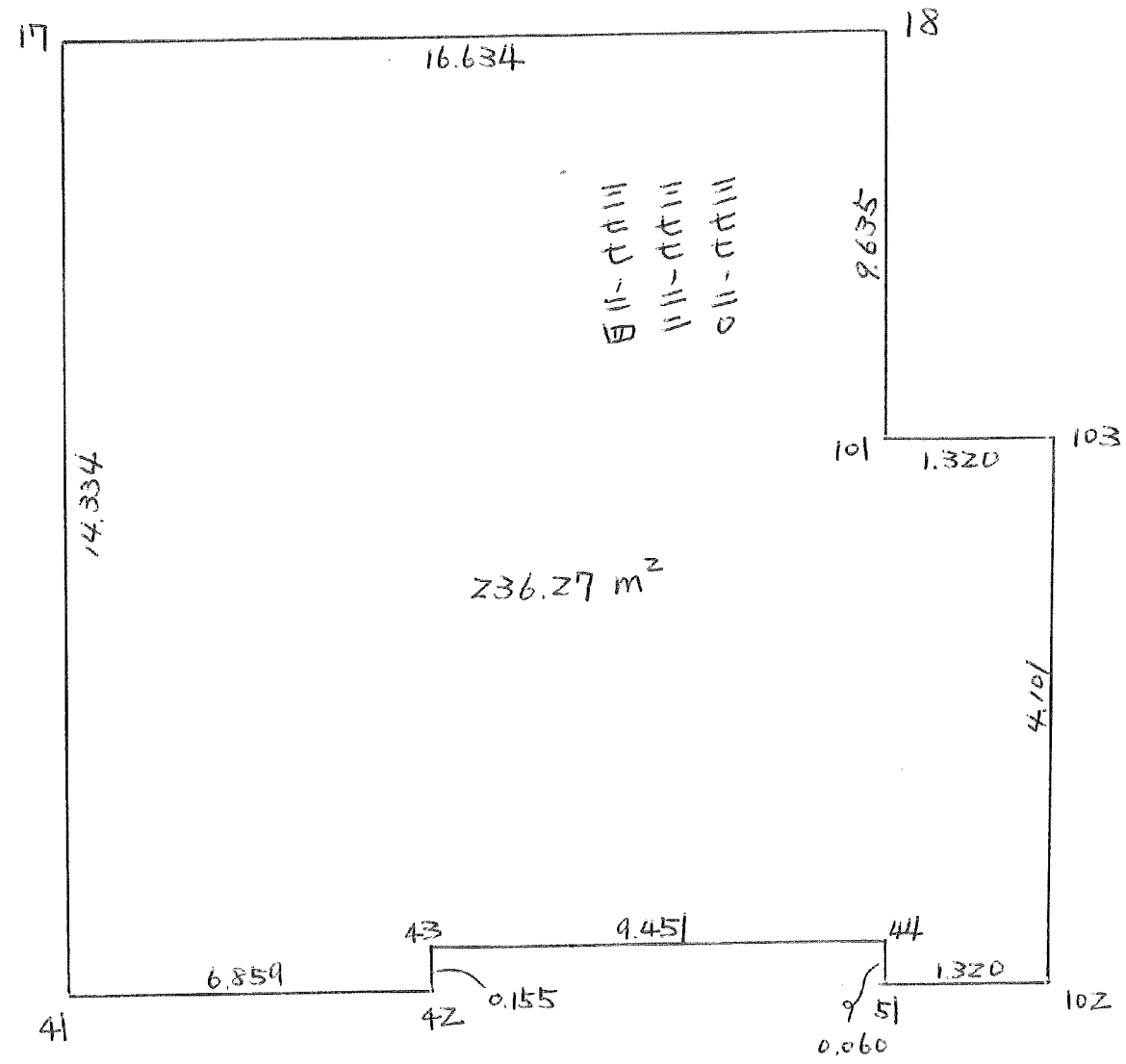
BNO, 67



67 BLOCK

70NO. X ₀ , Y ₀ =	X	Y	(X-X ₀) (Y _{N-1} -Y ₀)	(X _{N-1} -X ₀) (Y-Y ₀)
	-150400.000	-39000.000		
28	-150479.823	-39069.357		
29	-150479.637	-39066.340	5523.383409	5295.457820
20	-150478.445	-39046.992	5204.041300	3742.301904
21	-150489.246	-39046.941	4193.848032	3682.286745
47	-150490.851	-39065.465	4264.636791	5842.489390
46	-150490.996	-39067.144	5957.053140	6100.099544
50	-150484.959	-39067.561	5704.487096	6147.780756
102	-150484.974	-39067.719	5740.928414	5753.338521
103	-150480.880	-39067.969	5477.112720	5775.597806
101	-150480.961	-39069.287	5502.838209	5603.932560
28	-150479.823	-39069.357	5530.696201	5615.212077
			53099.025312	53556.497123
			平均値=	459.471811
			標準値=	229.735906

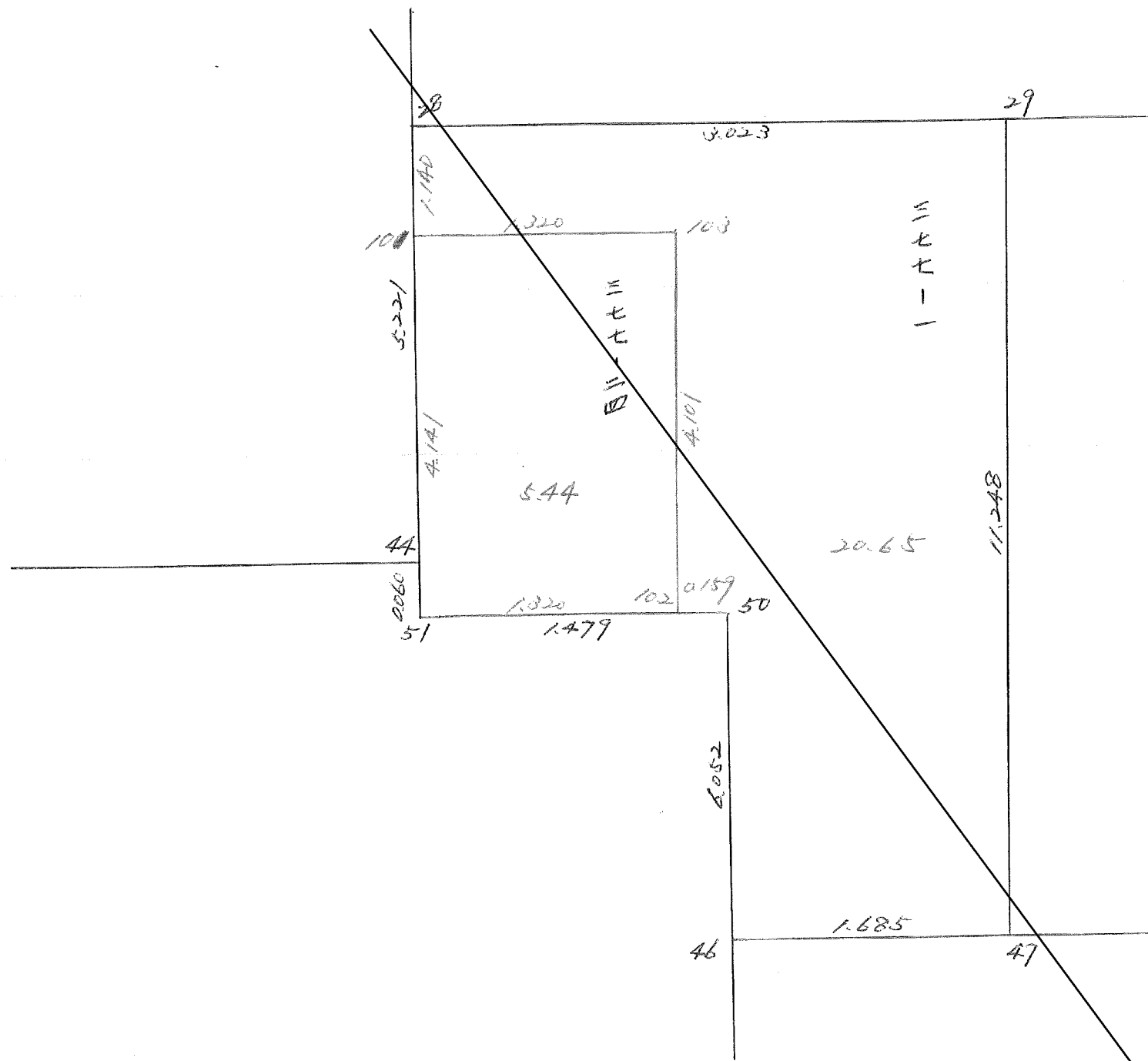
BNO.67



67 BLOCK

元NO. X ₀ , Y ₀ =	X	Y	(X-X ₀) (YN-1-Y ₀)	(XN-1-X ₀) (Y-Y ₀)
	-150400.000	-39000.000		
17	-150472.389	-39086.477		
18	-150471.345	-39069.875	6169.701565	5058.181375
101	-150480.961	-39069.287	5657.149875	4943.281015
103	-150480.880	-39067.969	5603.932560	5502.838209
102	-150484.974	-39067.719	5775.597806	5477.112720
51	-150485.095	-39069.034	5762.548305	5866.095116
44	-150485.035	-39069.038	5870.306190	5874.788610
43	-150485.902	-39078.450	5930.502276	6670.995750
42	-150486.056	-39078.436	6751.093200	6737.809272
41	-150486.672	-39085.267	6798.204992	7337.736952
17	-150472.389	-39086.477	6172.392863	7495.134544
			60491.429632	60963.973563
			ノ イ ノ セ キ =	472.543931
			ノ セ キ =	236.271966

67 BL



3-1 LOT

順NO. X ₀ Y ₀	X	Y	(X-X ₀)(Y _{N-1} -Y ₀)	(X _{N-1} -X ₀)(Y-Y ₀)
	-150400.000	-39000.000		
29	-150479.637	-39066.340	6027.055340	5213.436205
47	-150490.851	-39065.465	5957.053140	6100.099544
46	-150490.996	-39067.144	5704.487096	6147.780756
50	-150484.959	-39067.561	5740.928414	5753.338521
102	-150484.974	-39067.719	5477.112720	5775.597806
103	-150480.880	-39067.969	5502.838209	5603.932560
101	-150480.961	-39069.287	5530.696201	5615.212077
28	-150479.823	-39069.357	5523.383409	5295.457820
29	-150479.637	-39066.340		
			45463.554529	45504.855289
			ハ イノセキ=	41.300760
			ノセキ=	20.650380

3-2 LOT

順NO. X ₀ Y ₀	X	Y	(X-X ₀)(Y _{N-1} -Y ₀)	(X _{N-1} -X ₀)(Y-Y ₀)
	-150400.000	-39000.000		
103	-150480.880	-39067.969	5775.597806	5477.112720
102	-150484.974	-39067.719	5762.548305	5866.095116
51	-150485.095	-39069.034	5589.061674	5895.977265
101	-150480.961	-39069.287	5603.932560	5502.838209
103	-150480.880	-39067.969		
			22731.140345	22742.023310
			ハ イノセキ=	10.882965
			ノセキ=	5.441482