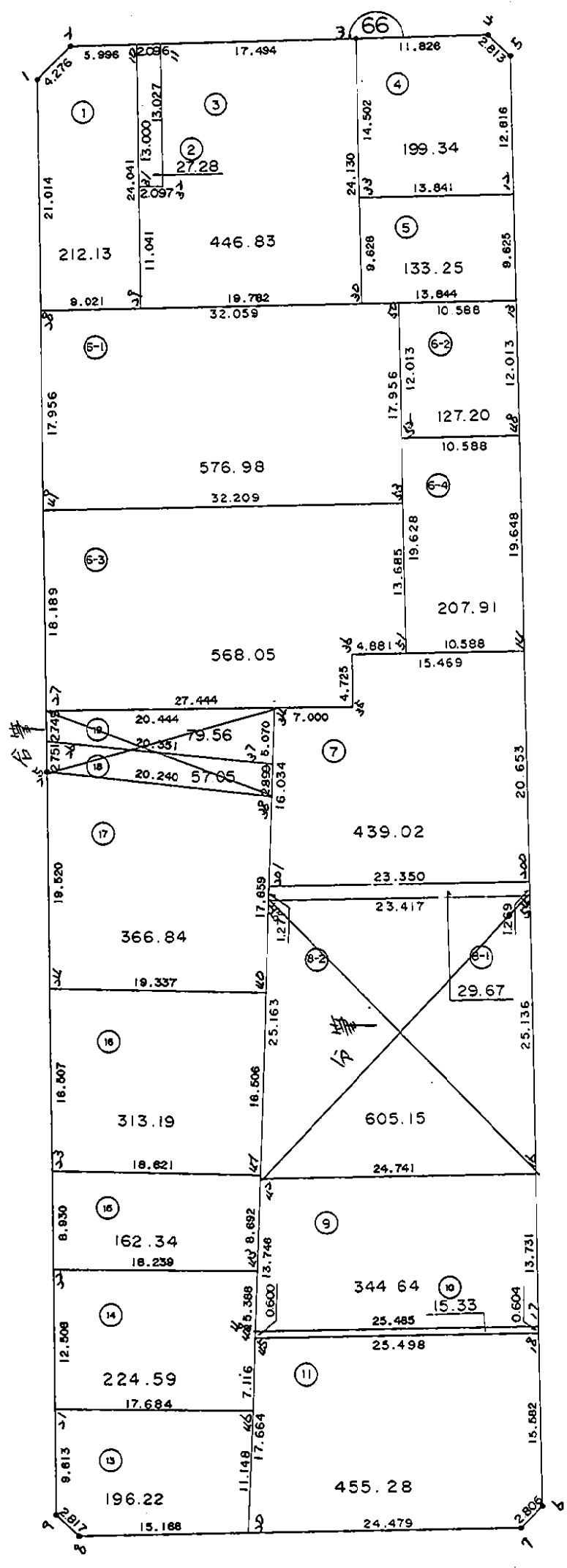
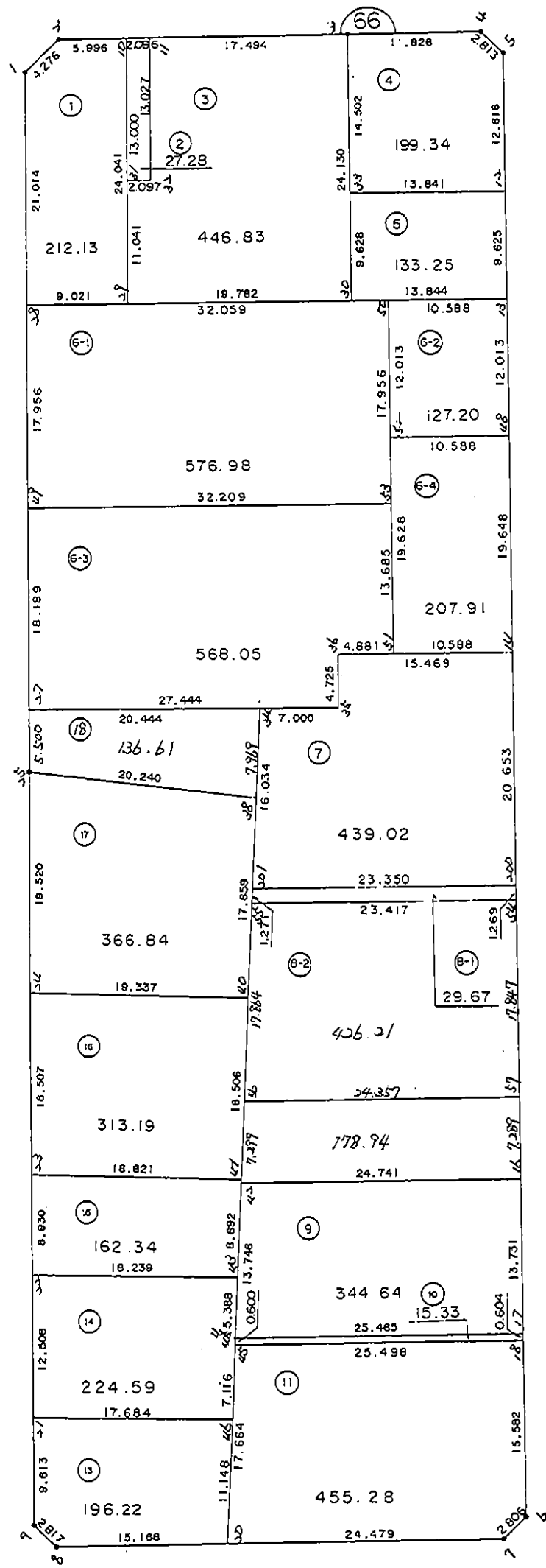


66 街 区

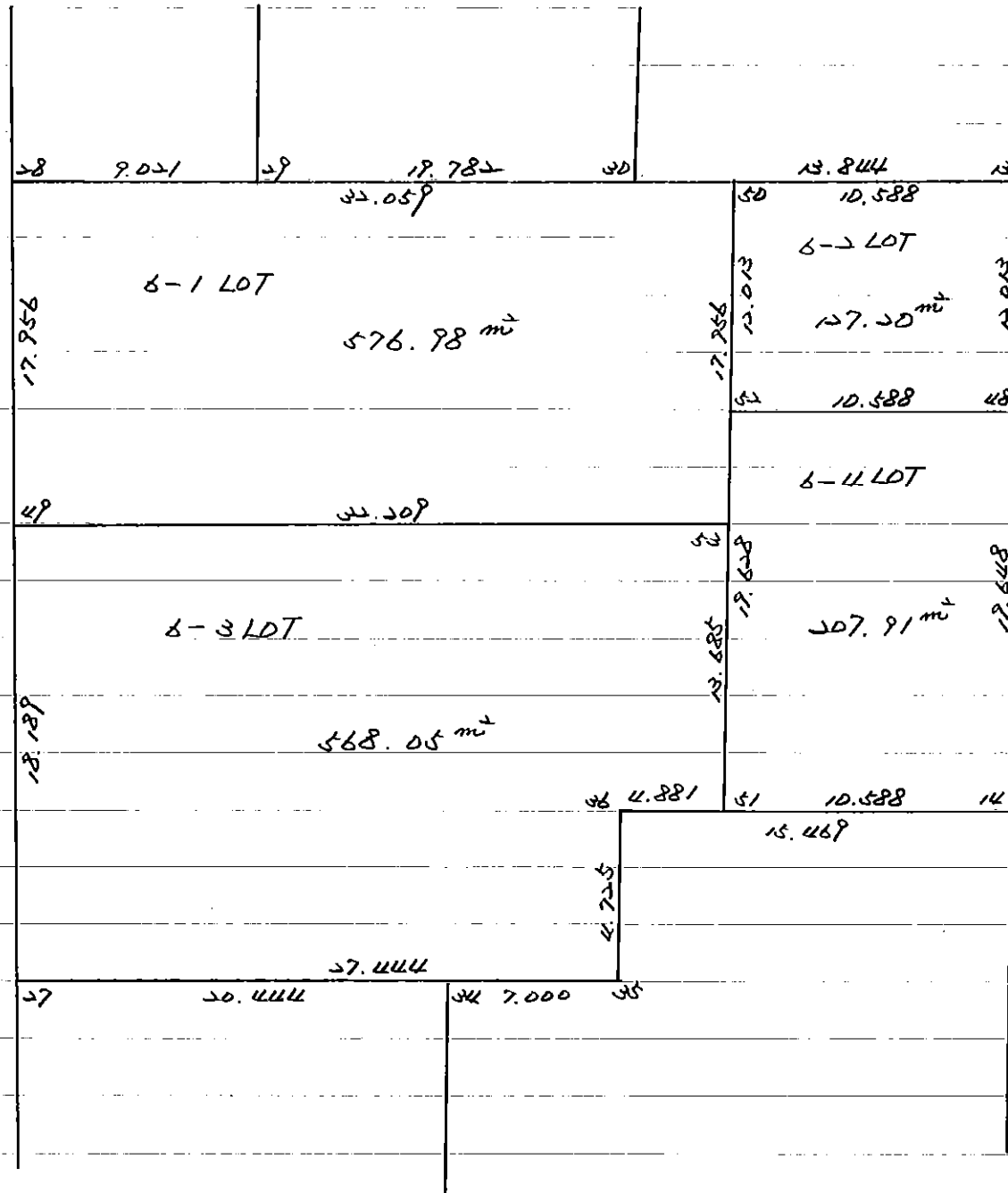




66 BL

43.9

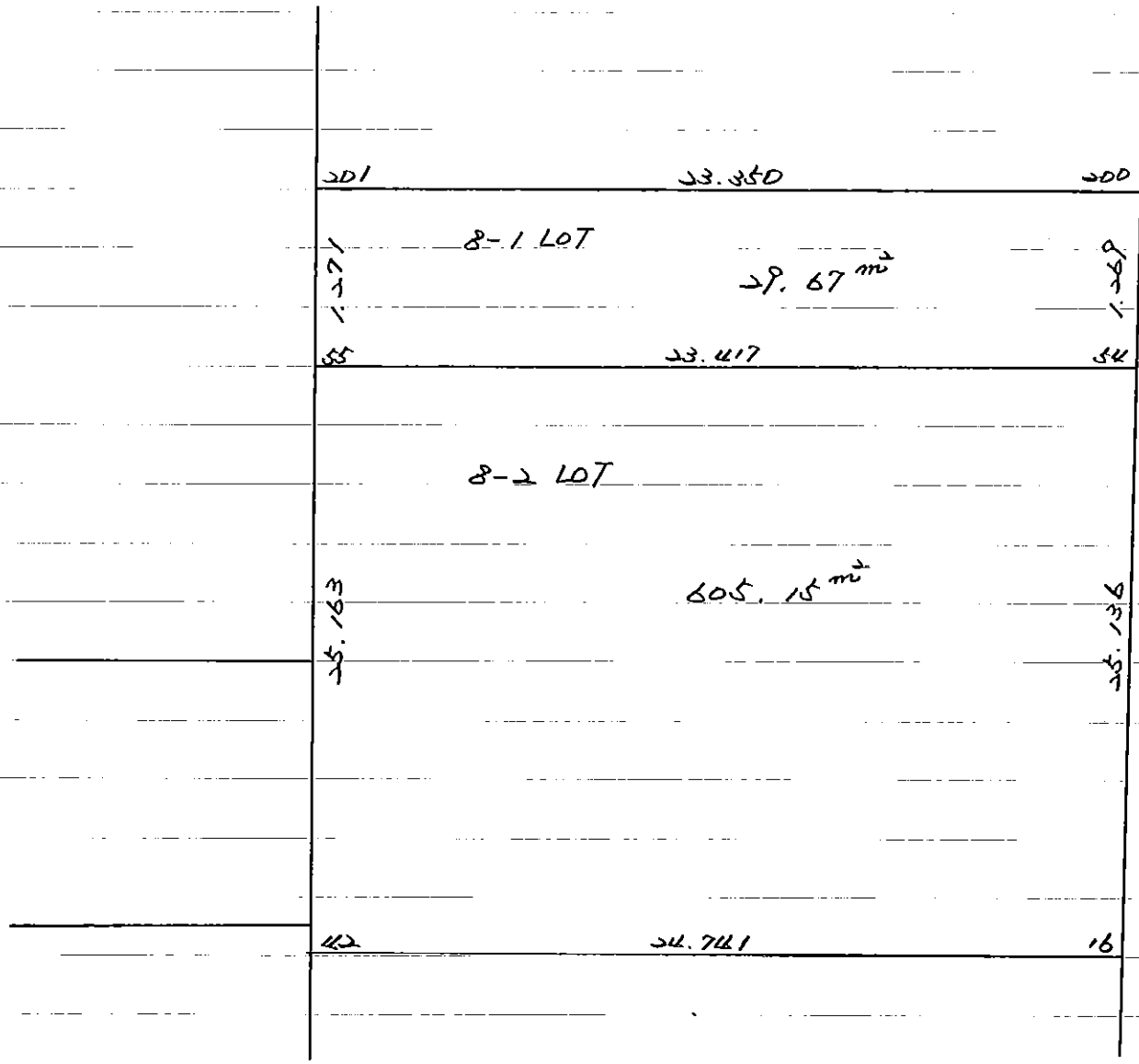
6 LOT 分等



66 BL

H3, 9.

8 LOT 分算.



カクヒツ . カクヒツ	カクヒツ メンセキ	入ミキリ メンセキ
66 BLOCK	5788.00	
1 LOT	212.13	
2 LOT	27.28	
3 LOT	446.83	
4 LOT	199.34	
5 LOT	133.25	
6-1 LOT	576.98	
6-2 LOT	127.20	
6-3 LOT	568.05	
6-4 LOT	207.91	
7 LOT	439.02	
8-1 LOT	29.67	
8-2 LOT	605.15	
9 LOT	344.64	
10 LOT	15.33	
11 LOT	<del>454.83</del> 455.28	
13 LOT	<del>196.50</del> 196.22	
14 LOT	<del>224.78</del> 224.59	
15 LOT	162.34	
16 LOT	313.19	
17 LOT	366.84	
18 LOT	<del>57.05</del> 136.61	
19 LOT	<del>79.56</del>	
コウケイ =	<del>5787.87</del> 5787.85	0.00

\*\*\*\*\* カクヒツ メンセキ ケイサン \*\*\*\*\*

66 BLOCK

デジメイ	X	Y	(X-X0)*(YN-1-Y0)	(XN-1-X0)*(Y-Y0)
X0.Y0	- 150000.000	- 39800.000		
66-1	- 150066.548	- 39919.891		
66-2	- 150063.451	- 39916.943	+ 7607.203841	+ 7782.322764
66-3	- 150062.496	- 39891.375	+ 7308.469728	+ 5797.835125
66-4	- 150062.032	- 39879.558	+ 5668.174000	+ 4972.056768
66-5	- 150063.931	- 39877.483	+ 5086.222498	+ 4806.425456
66-6	- 150194.738	- 39873.198	+ 15088.884454	+ 4679.621338
66-7	- 150196.789	- 39875.113	+ 14404.561222	+ 14627.355394
66-8	- 150198.172	- 39914.736	+ 14885.293436	+ 22578.782704
66-9	- 150196.248	- 39916.793	+ 22516.710528	+ 23145.102396
66-25	- 150129.188	- 39918.364	+ 15088.254084	+ 23228.698272
66-1	- 150066.548	- 39919.891	+ 7876.887472	+ 15488.478508
			+115530.661263	+127106.678725
	ハイ	メンセキ	= 11576.017462	
	メンセキ		= 5788.008731	

1 LOT

デジメイ	X	Y	(X-X0)*(YN-1-Y0)	(XN-1-X0)*(Y-Y0)
X0.Y0	- 150000.000	- 39900.000		
66-1	- 150066.548	- 39919.891		
66-2	- 150063.451	- 39916.943	+ 1262.103841	+ 1127.522764
66-10	- 150063.227	- 39910.951	+ 1071.255061	+ 694.851901
66-29	- 150087.261	- 39910.363	+ 955.595211	+ 655.221401
66-28	- 150087.556	- 39919.379	+ 907.342828	+ 1691.030919
66-1	- 150066.548	- 39919.891	+ 1289.633692	+ 1741.576396
			+ 5485.930633	+ 5910.203381
	ハイ	メンセキ	= 424.272748	
	メンセキ		= 212.136374	

2 LOT

デジメイ	X	Y	(X-X0)*(YN-1-Y0)	(XN-1-X0)*(Y-Y0)
X0.Y0	- 150000.000	- 39900.000		
66-10	- 150063.227	- 39910.951		
66-11	- 150063.149	- 39908.856	+ 691.544699	+ 559.938312
66-32	- 150076.172	- 39908.537	+ 674.579232	+ 539.103013
66-31	- 150076.223	- 39910.633	+ 650.715751	+ 809.936876
66-10	- 150063.227	- 39910.951	+ 672.292691	+ 834.718073
			+ 2689.132373	+ 2743.696274
	ハイ	メンセキ	= 54.563901	
	メンセキ		= 27.281950	

3 LOT

テシメイ	X	Y	(X-X0)*(YN-1-Y0)	(XN-1-X0)*(Y-Y0)
X0.Y0	- 150000.000	- 39800.000		
66-11	- 150063.149	- 39908.856		
66-3	- 150062.496	- 39891.375	+ 6803.064576	+ 5770.239875
66-30	- 150086.613	- 39890.592	+ 7914.262875	+ 5661.637632
66-29	- 150087.261	- 39910.363	+ 7905.148512	+ 9558.870519
66-31	- 150076.223	- 39910.633	+ 8412.198949	+ 9653.946213
66-32	- 150076.172	- 39908.537	+ 8427.136876	+ 8273.015751
66-11	- 150063.149	- 39908.856	+ 6854.003013	+ 8291.779232
			+ 46315.814801	+ 47209.489222
	ハイ	メンセキ	= 893.674421	
	メンセキ		= 446.837210	

4 LOT

テシメイ	X	Y	(X-X0)*(YN-1-Y0)	(XN-1-X0)*(Y-Y0)
X0.Y0	- 150000.000	- 39800.000		
66-3	- 150062.496	- 39891.375		
66-4	- 150062.032	- 39879.558	+ 5668.174000	+ 4972.056768
66-5	- 150063.931	- 39877.483	+ 5086.222498	+ 4806.425456
66-12	- 150076.540	- 39877.070	+ 5930.548820	+ 4927.162170
66-33	- 150076.990	- 39890.904	+ 5933.619300	+ 6957.792160
66-3	- 150062.496	- 39891.375	+ 5681.136384	+ 7034.961250
			+ 28299.701002	+ 28698.397804
	ハイ	メンセキ	= 398.696802	
	メンセキ		= 199.348401	

5 LOT

テシメイ	X	Y	(X-X0)*(YN-1-Y0)	(XN-1-X0)*(Y-Y0)
X0.Y0	- 150000.000	- 39800.000		
66-12	- 150076.540	- 39877.070		
66-13	- 150086.160	- 39876.755	+ 6640.351200	+ 5874.827700
66-30	- 150086.613	- 39890.592	+ 6647.980815	+ 7805.406720
66-33	- 150076.990	- 39890.904	+ 6974.678080	+ 7873.468152
66-12	- 150076.540	- 39877.070	+ 6957.792160	+ 5933.619300
			+ 27220.802255	+ 27487.321872
	ハイ	メンセキ	= 266.519617	
	メンセキ		= 133.259808	

6-1 LOT

テシメイ	X	Y	(X-X0)*(YN-1-Y0)	(XN-1-X0)*(Y-Y0)
X0.Y0	- 150000.000	- 39800.000		
66-49	- 150105.507	- 39918.941		
66-28	- 150087.556	- 39919.379	+ 10413.998196	+ 12595.320153



\*\*\*\*\* カクヒツ メンセキ ケイリン \*\*\*\*\*

テンメイ	X	Y	(X-X0)*(YN-1-Y0)	(XN-1-X0)*(Y-Y0)
66-50	- 150086.506	- 39887.338	+ 10326.999774	+ 7646.965928
66-53	- 150104.452	- 39886.749	+ 9122.628776	+ 7504.308994
66-49	- 150105.507	- 39918.941	+ 9152.626743	+ 12423.625332
			+ 39016.253489	+ 40170.220407
		ハイ メンセキ	= 1153.966918	
		メンセキ	= 576.983459	

6-2 LOT

テンメイ	X	Y	(X-X0)*(YN-1-Y0)	(XN-1-X0)*(Y-Y0)
X0.Y0	- 150000.000	- 39800.000		
66-13	- 150086.160	- 39876.755		
66-48	- 150098.167	- 39876.362	+ 7534.808085	+ 6579.349920
66-52	- 150098.513	- 39886.944	+ 7522.649706	+ 8535.031648
66-50	- 150086.506	- 39887.338	+ 7521.177664	+ 8603.928394
66-13	- 150086.160	- 39876.755	+ 7525.042080	+ 6639.768030
			+ 30103.677535	+ 30358.077992
		ハイ メンセキ	= 254.400457	
		メンセキ	= 127.200228	

6-3 LOT

テンメイ	X	Y	(X-X0)*(YN-1-Y0)	(XN-1-X0)*(Y-Y0)
X0.Y0	- 150100.000	- 39800.000		
66-27	- 150123.690	- 39918.498		
66-49	- 150105.507	- 39918.941	+ 652.568486	+ 2817.712290
66-53	- 150104.452	- 39886.749	+ 529.525332	+ 477.726743
66-51	- 150118.130	- 39886.301	+ 1572.759370	+ 384.212052
66-36	- 150118.281	- 39891.180	+ 1577.668581	+ 1653.093400
66-35	- 150123.005	- 39891.062	+ 2097.595900	+ 1664.704422
66-27	- 150123.690	- 39918.498	+ 2157.258780	+ 2726.046490
			+ 8587.376449	+ 9723.495397
		ハイ メンセキ	= 1136.118948	
		メンセキ	= 568.059474	

6-4 LOT

テンメイ	X	Y	(X-X0)*(YN-1-Y0)	(XN-1-X0)*(Y-Y0)
X0.Y0	- 150000.000	- 39800.000		
66-48	- 150098.167	- 39876.362		
66-14	- 150117.804	- 39875.718	+ 8995.749048	+ 7433.008906
66-51	- 150118.130	- 39886.301	+ 8944.567340	+ 10166.603004
66-52	- 150098.513	- 39886.944	+ 8501.770413	+ 10270.694720
66-48	- 150098.167	- 39876.362	+ 8535.031648	+ 7522.649706
			+ 34977.118449	+ 35392.956336
		ハイ メンセキ	= 415.837887	
		メンセキ	= 207.918943	

\*\*\*\*\* カクヒツ メンセキ ケイリシ \*\*\*\*\*

7 LOT

テンメイ	X	Y	(X-X0)*(YN-1-Y0)	(XN-1-X0)*(Y-Y0)
X0.Y0	- 150100.000	- 39800.000		
66-14	- 150117.804	- 39875.718		
66-200	- 150138.446	- 39875.042	+ 2911.054228	+ 1336.047768
66-201	- 150139.210	- 39898.379	+ 2942.396820	+ 3782.279034
66-34	- 150123.180	- 39898.060	+ 2280.425220	+ 3844.932600
66-35	- 150123.005	- 39891.062	+ 2255.870300	+ 2110.817160
66-36	- 150118.281	- 39891.180	+ 1664.704422	+ 2097.595900
66-14	- 150117.804	- 39875.718	+ 1623.368720	+ 1384.200758

+ 13677.819710      + 14555.873220  
 ハイ    メンセキ    =      878.053510  
 メンセキ            =      439.026755

8-1 LOT

テンメイ	X	Y	(X-X0)*(YN-1-Y0)	(XN-1-X0)*(Y-Y0)
X0.Y0	- 150100.000	- 39800.000		
66-200	- 150138.446	- 39875.042		
66-54	- 150139.714	- 39875.000	+ 2980.217988	+ 2883.450000
66-55	- 150140.481	- 39898.404	+ 3036.075000	+ 3908.016456
66-201	- 150139.210	- 39898.379	+ 3858.420840	+ 3982.480299
66-200	- 150138.446	- 39875.042	+ 3782.279034	+ 2942.396820

+ 13656.992862      + 13716.343575  
 ハイ    メンセキ    =      59.350713  
 メンセキ            =      29.675356

8-2 LOT

テンメイ	X	Y	(X-X0)*(YN-1-Y0)	(XN-1-X0)*(Y-Y0)
X0.Y0	- 150100.000	- 39800.000		
66-54	- 150139.714	- 39875.000		
66-16	- 150164.836	- 39874.178	+ 4862.700000	+ 2945.905092
66-42	- 150165.640	- 39898.906	+ 4869.043920	+ 6412.669416
66-55	- 150140.481	- 39898.404	+ 4003.813786	+ 6459.238560
66-54	- 150139.714	- 39875.000	+ 3908.016456	+ 3036.075000

+ 17643.574162      + 18853.888068  
 ハイ    メンセキ    =      1210.313906  
 メンセキ            =      605.156953

9 LOT

テンメイ	X	Y	(X-X0)*(YN-1-Y0)	(XN-1-X0)*(Y-Y0)
X0.Y0	- 150100.000	- 39800.000		
66-16	- 150164.836	- 39874.178		
66-17	- 150178.560	- 39873.728	+ 5827.423680	+ 4780.228608

\*\*\*\*\* カクヒツ メンセキ ケイリョウ \*\*\*\*\*

テソメイ	X	Y	(X-X0)*(YN-1-Y0)	(XN-1-X0)*(Y-Y0)
66-44	- 150179.383	- 39899.180	+ 5852.749824	+ 7791.580800
66-42	- 150165.640	- 39898.906	+ 6510.175200	+ 7851.454998
66-16	- 150164.836	- 39874.178	+ 6412.669416	+ 4869.043920

+ 24603.018120 + 25292.308326

ハイ メンセキ = 689.290206

メソセキ = 344.645103

10 LOT

テソメイ	X	Y	(X-X0)*(YN-1-Y0)	(XN-1-X0)*(Y-Y0)
X0.Y0	- 150100.000	- 39800.000		
66-17	- 150178.560	- 39873.728		
66-18	- 150179.164	- 39873.708	+ 5836.603392	+ 5790.500480
66-45	- 150179.983	- 39899.189	+ 5895.386964	+ 7852.197996
66-44	- 150179.383	- 39899.180	+ 7873.920387	+ 7932.713940
66-17	- 150178.560	- 39873.728	+ 7791.580800	+ 5852.749824

+ 27397.491543 + 27428.162240

ハイ メンセキ = 30.670697

メソセキ = 15.335348

11 LOT

テソメイ	X	Y	(X-X0)*(YN-1-Y0)	(XN-1-X0)*(Y-Y0)
X0.Y0	- 150100.000	- 39800.000		
66-18	- 150179.164	- 39873.708		
66-6	- 150194.738	- 39873.198	+ 6982.948504	+ 5794.646472
66-7	- 150196.789	- 39875.113	+ 7084.761222	+ 7116.055394
66-20	- 150197.643	- 39899.577	+ 7334.258659	+ 9637.958253
66-46	- 150186.497	- 39899.284	+ 8613.111769	+ 9694.387612
66-45	- 150179.983	- 39899.189	+ 7941.032172	+ 8579.550933
66-18	- 150179.164	- 39873.708	+ 7852.197996	+ 5895.386964

+ 45808.310322 + 46717.985628

ハイ メンセキ = 909.675306

メソセキ = 454.837653

13 LOT

テソメイ	X	Y	(X-X0)*(YN-1-Y0)	(XN-1-X0)*(Y-Y0)
X0.Y0	- 150100.000	- 39800.000		
66-20	- 150197.643	- 39899.577		
66-8	- 150198.172	- 39914.736	+ 9775.673244	+ 11203.167248
66-9	- 150196.248	- 39916.793	+ 11043.110528	+ 11465.802396
66-21	- 150186.638	- 39917.018	+ 10118.711934	+ 11262.748464
66-46	- 150186.497	- 39899.284	+ 10121.705946	+ 8601.767192
66-20	- 150197.643	- 39899.577	+ 9694.387612	+ 8613.111769

\*\*\*\*\* カグロツメンセキ ケイリソ \*\*\*\*\*

テソメイ	X	Y	(X-X0)*(YN-1-Y0)	(XN-1-X0)*(Y-Y0)
			+ 50753.589264	+ 51146.597069
		ハイメセキ	= 393.007805	
		メセキ	= 196.503902	

14 LOT

テソメイ	X	Y	(X-X0)*(YN-1-Y0)	(XN-1-X0)*(Y-Y0)
X0.Y0	- 150100.000	- 39800.000		
66-21	- 150186.638	- 39917.018		
66-22	- 150174.133	- 39917.311	+ 8674.895394	+ 10163.590418
66-43	- 150173.996	- 39899.073	+ 8680.544756	+ 7344.578709
66-44	- 150179.383	- 39899.180	+ 7864.711959	+ 7338.923280
66-46	- 150186.497	- 39899.284	+ 8578.772460	+ 7881.461772
66-21	- 150186.638	- 39917.018	+ 8601.767192	+ 10121.705946
			+ 42400.691761	+ 42850.260125
		ハイメセキ	= 449.568364	
		メセキ	= 224.784182	

15 LOT

テソメイ	X	Y	(X-X0)*(YN-1-Y0)	(XN-1-X0)*(Y-Y0)
X0.Y0	- 150100.000	- 39800.000		
66-22	- 150174.133	- 39917.311		
66-23	- 150165.205	- 39917.520	+ 7649.263755	+ 8712.110160
66-41	- 150165.306	- 39898.899	+ 7674.761120	+ 6448.709295
66-43	- 150173.996	- 39899.073	+ 7318.130404	+ 6470.061338
66-22	- 150174.133	- 39917.311	+ 7344.578709	+ 8680.544756
			+ 29986.733988	+ 30311.425549
		ハイメセキ	= 324.691561	
		メセキ	= 162.345780	

16 LOT

テソメイ	X	Y	(X-X0)*(YN-1-Y0)	(XN-1-X0)*(Y-Y0)
X0.Y0	- 150100.000	- 39800.000		
66-23	- 150165.205	- 39917.520		
66-24	- 150148.703	- 39917.907	+ 5723.576560	+ 7688.125935
66-40	- 150148.803	- 39898.570	+ 5754.215321	+ 4800.654710
66-41	- 150165.306	- 39898.899	+ 6437.212420	+ 4826.567897
66-23	- 150165.205	- 39917.520	+ 6448.709295	+ 7674.761120
			+ 24363.713596	+ 24990.109662
		ハイメセキ	= 626.396066	
		メセキ	= 313.198033	

\*\*\*\*\* カクヒツ メンセキ ケイサン \*\*\*\*\*

17 LOT

テコメイ	X	Y	(X-X0)*(YN-1-Y0)	(XN-1-X0)*(Y-Y0)
X0.Y0	- 150100.000	- 39800.000		
66-24	- 150148.703	- 39917.907		
66-25	- 150129.188	- 39918.364	+ 3441.469516	+ 5764.681892
66-38	- 150131.147	- 39898.219	+ 3686.683508	+ 2866.816172
66-201	- 150139.210	- 39898.379	+ 3851.166990	+ 3064.210713
66-40	- 150148.803	- 39898.570	+ 4801.190337	+ 3864.929700
66-24	- 150148.703	- 39917.907	+ 4800.654710	+ 5754.215321
			+ 20581.165061	+ 21314.853798
	ハイ	メンセキ	= 733.688737	
	メンセキ	= 366.844368		

18 LOT

テコメイ	X	Y	(X-X0)*(YN-1-Y0)	(XN-1-X0)*(Y-Y0)
X0.Y0	- 150100.000	- 39800.000		
66-25	- 150129.188	- 39918.364		
66-26	- 150126.438	- 39918.431	+ 3129.307432	+ 3456.764028
66-37	- 150128.249	- 39898.161	+ 3345.557319	+ 2595.180518
66-38	- 150131.147	- 39898.219	+ 3057.420667	+ 2774.588531
66-25	- 150129.188	- 39918.364	+ 2866.816172	+ 3686.683508
			+ 12399.101590	+ 12513.216585
	ハイ	メンセキ	= 114.114995	
	メンセキ	= 57.057497		

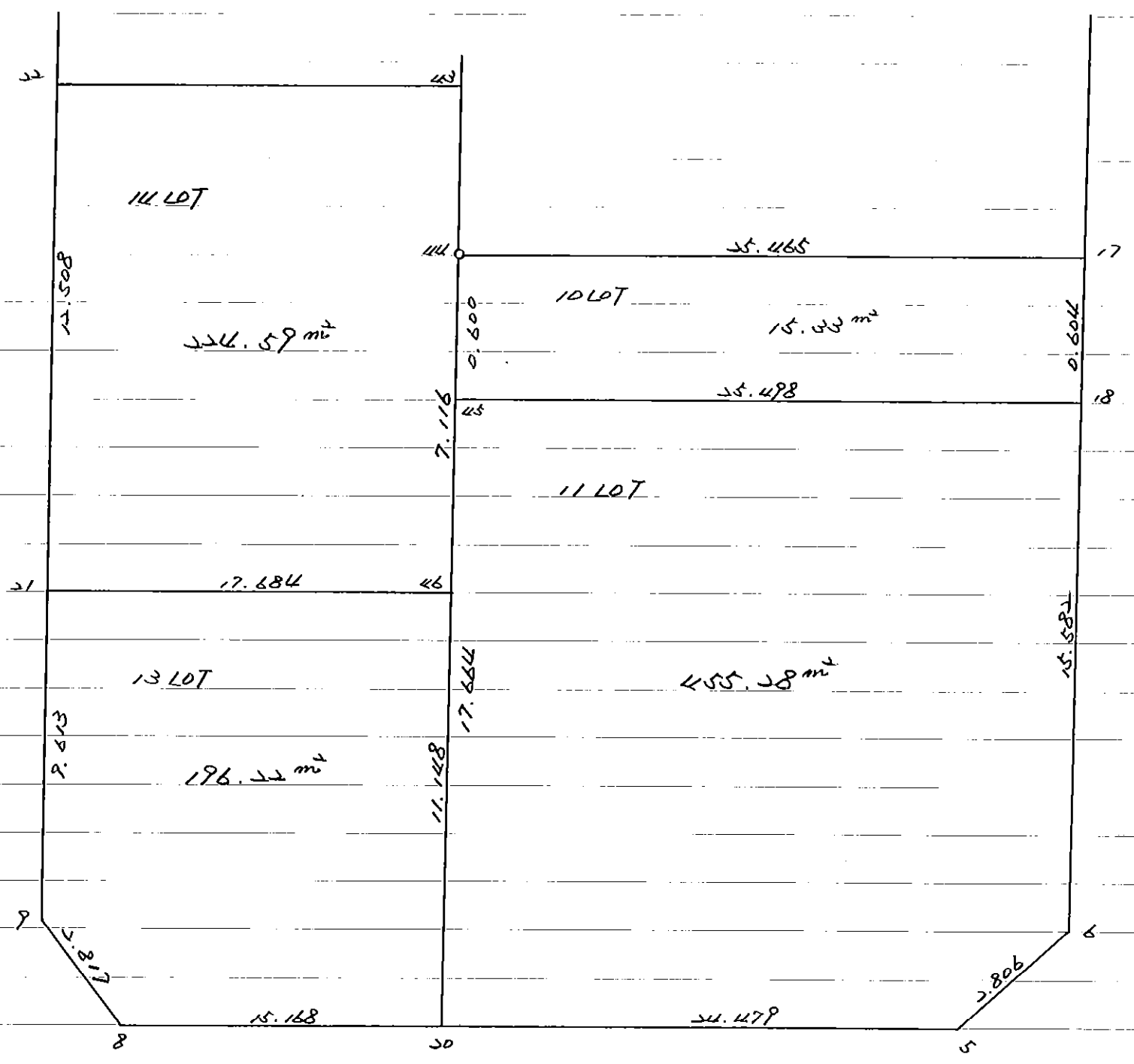
19 LOT

テコメイ	X	Y	(X-X0)*(YN-1-Y0)	(XN-1-X0)*(Y-Y0)
X0.Y0	- 150100.000	- 39800.000		
66-26	- 150126.438	- 39918.431		
66-27	- 150123.690	- 39918.498	+ 2805.630390	+ 3132.850124
66-34	- 150123.180	- 39898.060	+ 2746.783640	+ 2323.041400
66-37	- 150128.249	- 39898.161	+ 2770.096940	+ 2275.371980
66-26	- 150126.438	- 39918.431	+ 2595.180518	+ 3345.557319
			+ 10917.691488	+ 11076.820823
	ハイ	メンセキ	= 159.129335	
	メンセキ	= 79.564667		

66 BL

H3.9

11 LOT, 12 LOT 台單



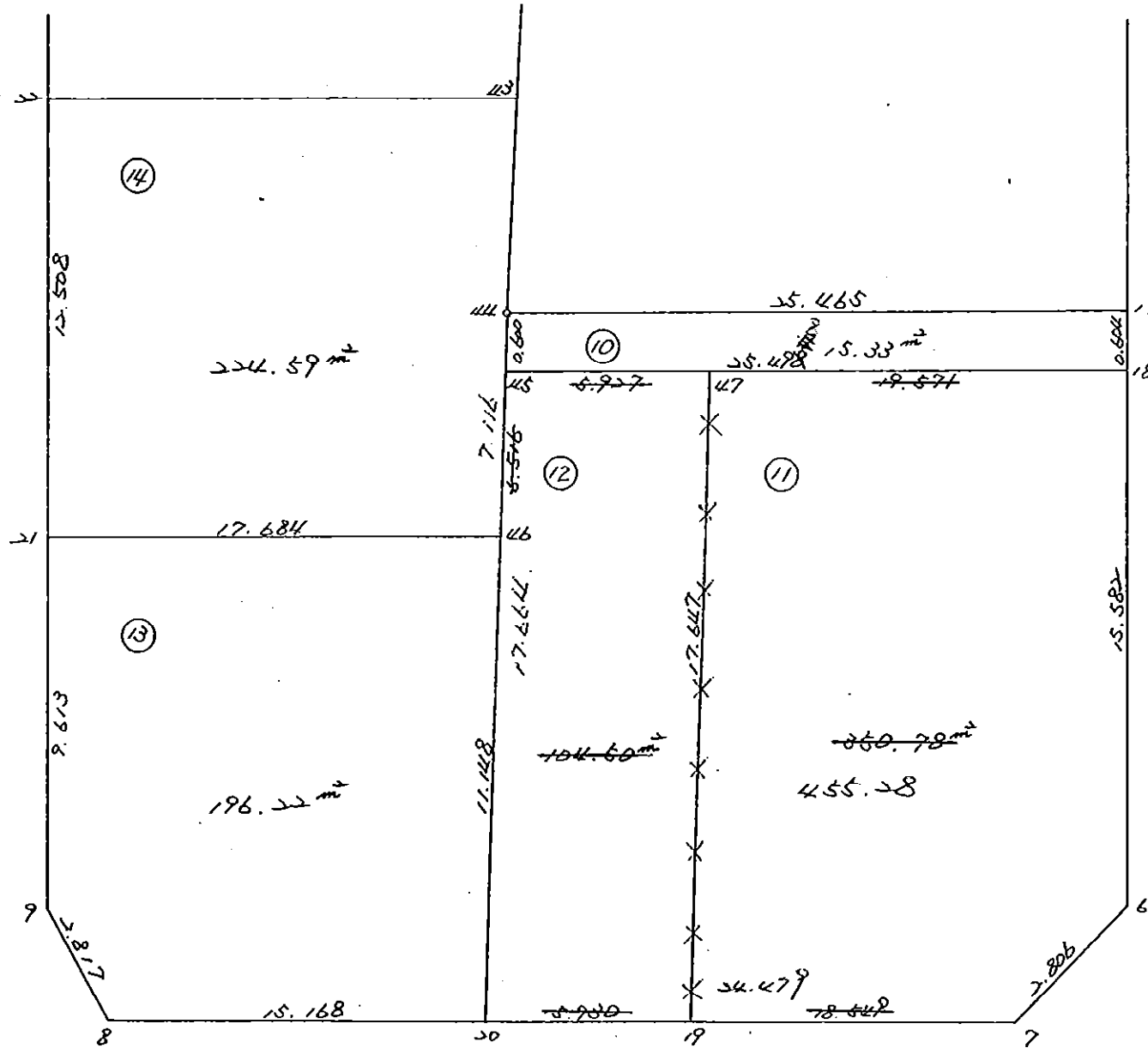
66 街区

H2, 3, 5 変更

10, 12, 13, 14 LOT

X H3, 9.

11, 12 LOT 合算



\* \* \* \* 10 LOT

面積計算書

\* \* \* \* NO 1

点名	X	DX	DMD.1	Y	DY	DMD.2	DX * DMD.2	DY * DMD.1
66-17	- 150178.560		- 39873.728					
66-18	- 150179.164	+ 0.604	+ 0.604	- 39873.708	- 0.020	- 0.020	- 0.012080	- 0.012080
66-45	- 150179.983	+ 0.819	+ 2.027	- 39899.193	+ 25.485	+ 25.445	+ 20.839455	+ 51.658095
66-44	- 150179.383	- 0.600	+ 2.246	- 39899.180	- 0.013	+ 50.917	- 30.550200	- 0.029198
66-17	- 150178.560	- 0.823	+ 0.823	- 39873.728	- 25.452	+ 25.452	- 20.946996	- 20.946996
		+ 1.423			+ 25.485		+ 20.839455	+ 51.658095
		- 1.423			- 25.485		- 51.509276	- 20.988274
							- 30.669821	+ 30.669821

面積 = 15.334910



\* \* \* \* 12 LOT

面積計算書 \* \* \* \* NO 1

点名	X	DX	DMD.1	Y	DY	DMD.2	DX * DMD.2	DY * DMD.1
66-19	- 150197.436		- 39893.651					
66-20	- 150197.643	+ 0.207	+ 0.207	- 39899.577	+ 5.926	+ 5.926	+ 1.226682	+ 1.226682
66-45	- 150179.983	- 17.660	- 17.246	- 39899.193	- 0.384	+ 11.468	- 202.524880	+ 6.622464
66-47	- 150179.793	- 0.190	- 35.096	- 39893.269	- 5.924	+ 5.160	- 0.980400	+ 207.908704
66-19	- 150197.436	+ 17.643	- 17.643	- 39893.651	+ 0.382	- 0.382	- 6.739626	- 6.739626
		+ 17.850			+ 6.308		+ 1.226682	+ 215.757850
		- 17.850			- 6.308		- 210.244906	- 6.739626
							- 209.018224	+ 209.018224

面積 = 104.509112 + 350.78 = 455.28

\* \* \* \* 13 LOT

## 面積計算書

\* \* \* \* NO 1

点名	X	DX	DMD.1	Y	DY	DMD.2	DX * DMD.2	DY * DMD.1
66-20	- 150197.643			- 39899.577				
66-8	- 150198.172	+ 0.529	+ 0.529	- 39914.736	+ 15.159	+ 15.159	+ 8.019111	+ 8.019111
66-9	- 150196.248	- 1.924	- 0.866	- 39916.793	+ 2.057	+ 32.375	- 62.289500	- 1.781362
66-21	- 150186.638	- 9.610	- 12.400	- 39917.018	+ 0.225	+ 34.657	- 333.053770	- 2.790000
66-46	- 150186.497	- 0.141	- 22.151	- 39899.335	- 17.683	+ 17.199	- 2.425059	+ 391.696133
66-20	- 150197.643	+ 11.146	- 11.146	- 39899.577	+ 0.242	- 0.242	- 2.697332	- 2.697332
		+ 11.675			+ 17.683		+ 8.019111	+ 399.715244
		- 11.675			- 17.683		- 400.465661	- 7.268694
							- 392.446550	+ 392.446550
							面積 =	196.223275

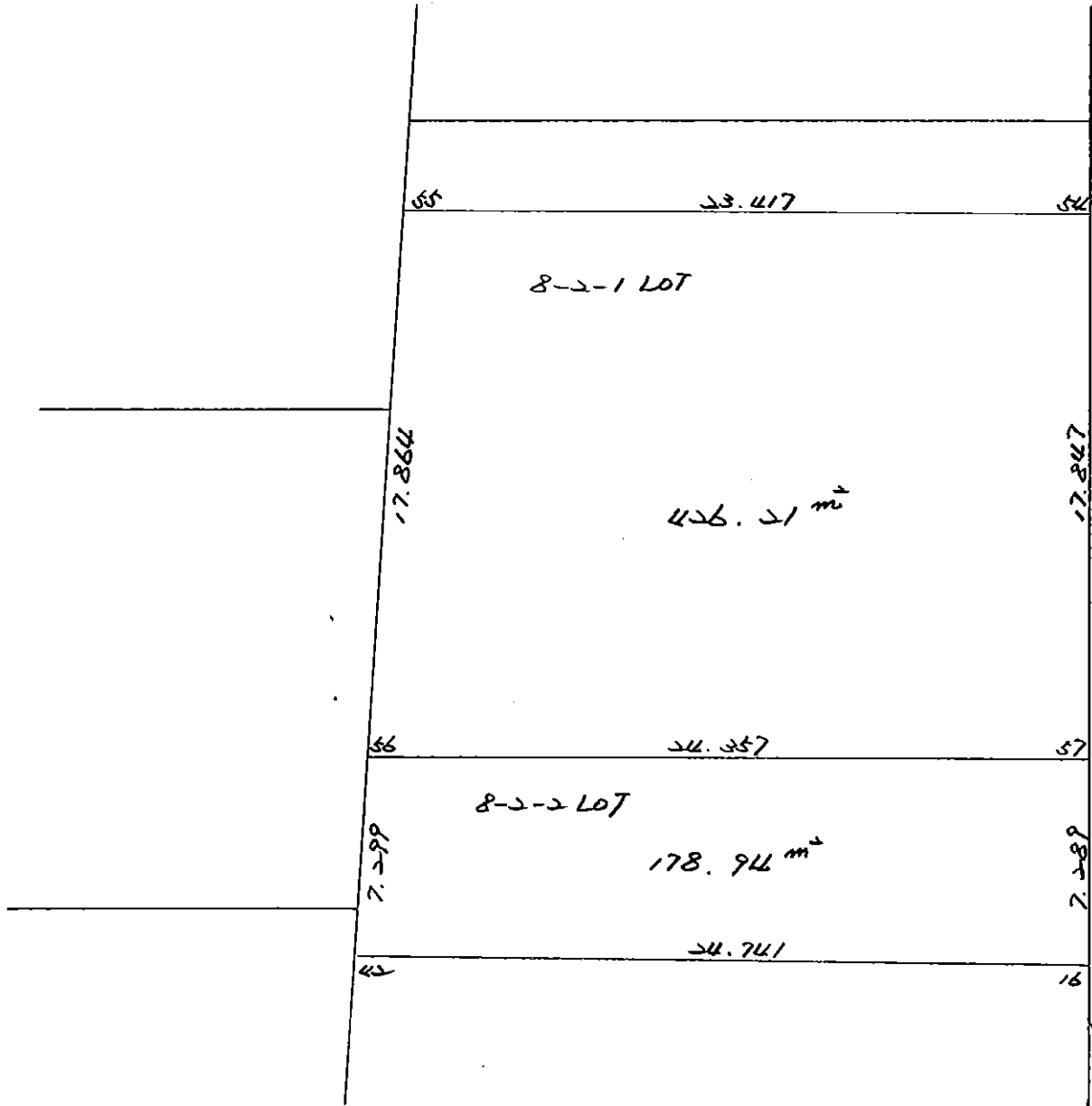
\* \* \* \* 14 LOT

## 面積計算書 \* \* \* \* NO. 1

点名	X	DX	DMD.1	Y	DY	DMD.2	DX * DMD.2	DY * DMD.1
66-21	- 150186.638		-	39917.018				
66-22	- 150174.133	- 12.505	- 12.505	39917.311	+ 0.293	+ 0.293	- 3.663965	- 3.663965
66-43	- 150173.996	- 0.137	- 25.147	39899.073	- 18.238	- 17.652	+ 2.418324	+ 458.630986
66-44	- 150179.383	+ 5.387	- 19.897	39899.180	+ 0.107	- 35.783	- 192.763021	- 2.128979
66-46	- 150186.497	+ 7.114	- 7.396	39899.335	+ 0.155	- 35.521	- 252.696394	- 1.146380
66-21	- 150186.638	+ 0.141	- 0.141	39917.018	+ 17.683	- 17.683	- 2.493303	- 2.493303
		+ 12.642			+ 18.238		+ 2.418324	+ 458.630986
		- 12.642			- 18.238		- 451.616683	- 9.432627
							- 449.198359	+ 449.198359
						面積 =	224.599179	

66 BL

H4, 11, 30



\* \* \* \* 8-2-1 LOT

面 積 計 算 書

\* \* \* \* NO 1

点 名	X	DX	DMD.1	Y	DY	DMD.2	DX * DMD.2	DY * DMD.1
66-54	- 150139.714			- 39875.000				
66-57	- 150157.551	+ 17.837	+ 17.837	- 39874.417	- 0.583	- 0.583	- 10.398971	- 10.398971
66-56	- 150158.342	+ 0.791	+ 36.465	- 39898.761	+ 24.344	+ 23.178	+ 18.333798	+ 887.703960
66-55	- 150140.481	- 17.861	+ 19.395	- 39898.404	- 0.357	+ 47.165	- 842.414065	- 6.924015
66-54	- 150139.714	- 0.767	+ 0.767	- 39875.000	- 23.404	+ 23.404	- 17.950868	- 17.950868
		+ 18.628			+ 24.344		+ 18.333798	+ 887.703960
		- 18.628			- 24.344		- 870.763904	- 35.273854
							- 852.430106	+ 852.430106
						面 積 =	426.215053	

\* \* \* \* 8-2-2 LOT

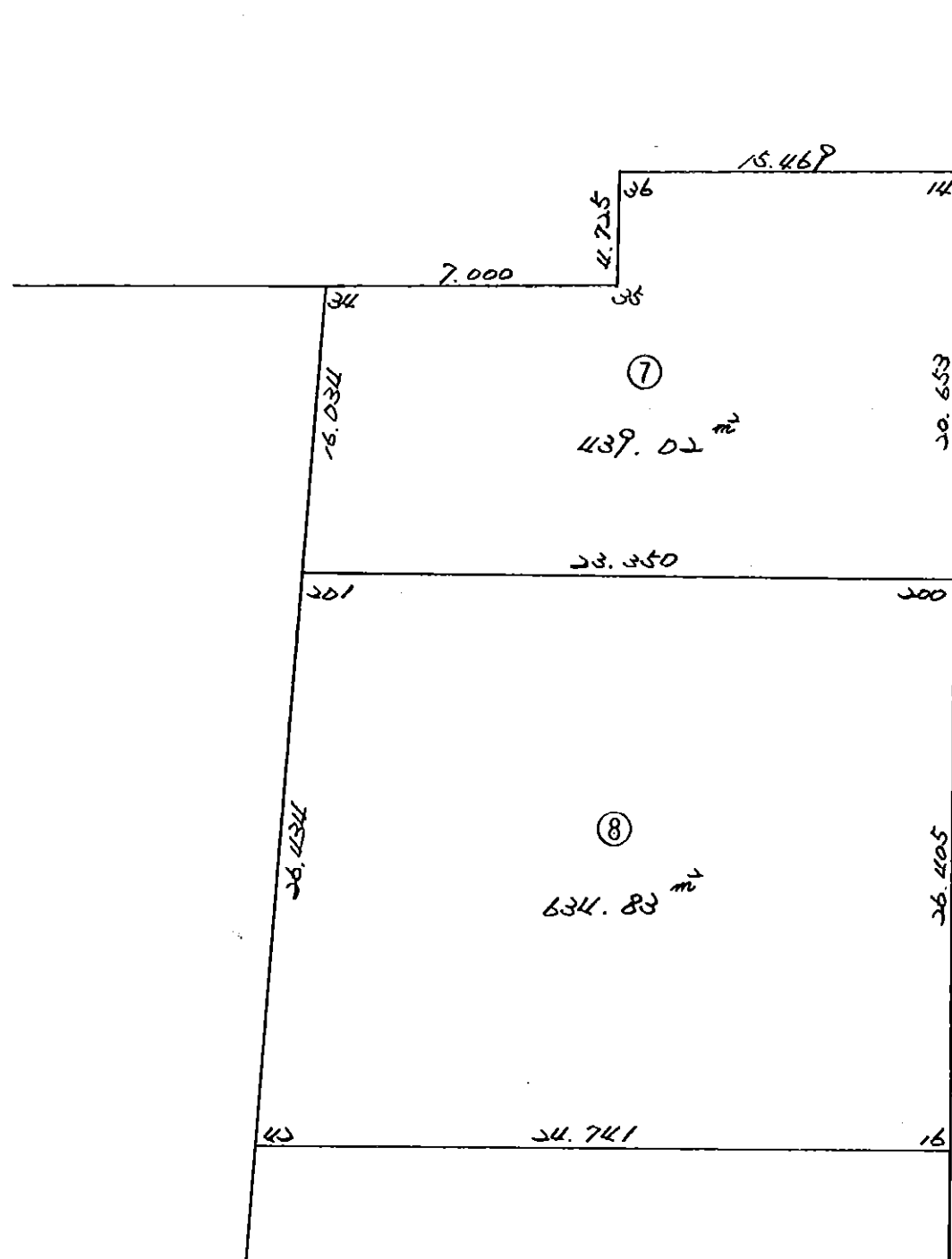
面積計算書

\* \* \* \* NO 1

点名	X	DX	DMD.1	Y	DY	DMD.2	DX * DMD.2	DY * DMD.1
66-57	- 150157.551			- 39874.417				
66-16	- 150164.836	+ 7.285	+ 7.285	- 39874.178	- 0.239	- 0.239	- 1.741115	- 1.741115
66-42	- 150165.640	+ 0.804	+ 15.374	- 39898.906	+ 24.728	+ 24.250	+ 19.497000	+ 380.168272
66-56	- 150158.342	- 7.298	+ 8.880	- 39898.761	- 0.145	+ 48.833	- 356.383234	- 1.287600
66-57	- 150157.551	- 0.791	+ 0.791	- 39874.417	- 24.344	+ 24.344	- 19.256104	- 19.256104
		+ 8.089			+ 24.728		+ 19.497000	+ 380.168272
		- 8.089			- 24.728		- 377.380453	- 22.284819
							- 357.883453	+ 357.883453
						面積 =	178.941726	

平成元年 5月20日 変更

66 街区



7 LOT

FDNO. X.Y.	X	Y	(X-X <sub>0</sub> )(Y <sub>N-1</sub> -Y <sub>0</sub> )	(X <sub>N-1</sub> -X <sub>0</sub> )(Y-Y <sub>0</sub> )
14	-150100.000	-39800.000		
200	-150117.804	-39875.718		
201	-150138.446	-39875.042	2911.054228	1336.047768
34	-150139.210	-39898.379	2942.396820	3782.279034
35	-150123.180	-39898.060	2280.425220	3844.932600
36	-150123.005	-39891.062	2255.870300	2110.817160
14	-150118.281	-39891.180	1664.704422	2097.595900
14	-150117.804	-39875.718	1623.368720	1384.200758
			13677.819710	14555.873220
			平均値=	878.053510
			標準値=	439.026755

8 LOT

FDNO. X.Y.	X	Y	(X-X <sub>0</sub> )(Y <sub>N-1</sub> -Y <sub>0</sub> )	(X <sub>N-1</sub> -X <sub>0</sub> )(Y-Y <sub>0</sub> )
200	-150100.000	-39800.000		
16	-150138.446	-39875.042		
42	-150164.836	-39874.178	4865.423112	2851.847388
201	-150165.640	-39898.906	4869.043920	6412.669416
200	-150139.210	-39898.379	3878.104260	6457.597560
200	-150138.446	-39875.042	3782.279034	2942.396820
			17394.850326	18664.511184
			平均値=	1269.660858
			標準値=	634.830429