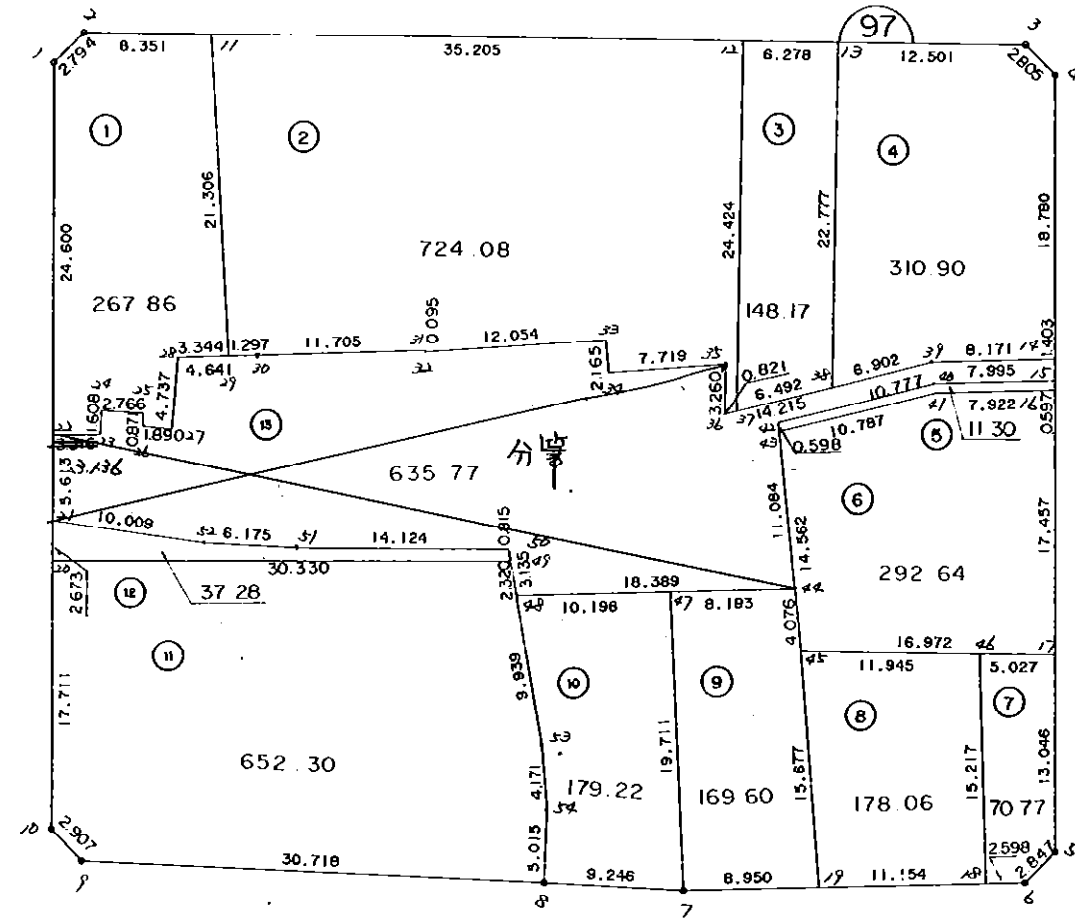


97 街 区



画地略図

工区

西部第2

ブロック

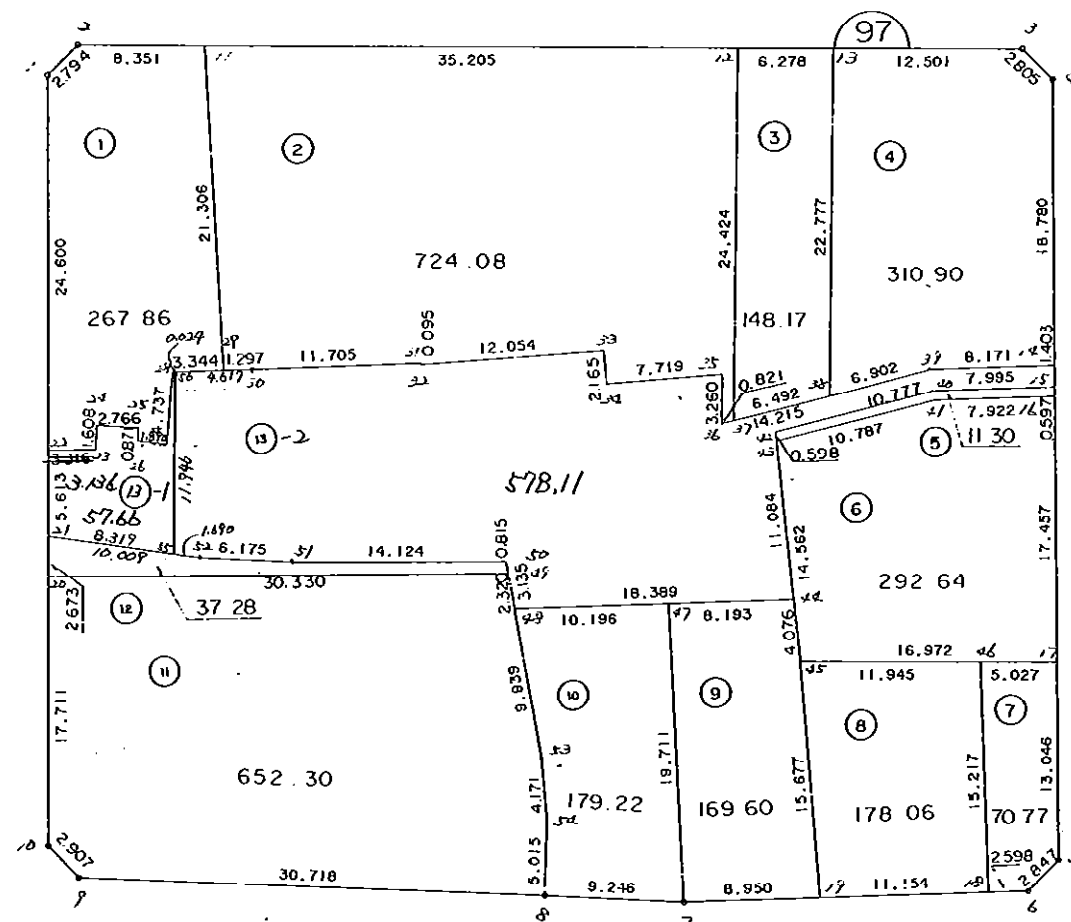
97

記入者

近田 侍良

点検者

安原 聖



三和測量建設株式会社

***** カクヒツ メンセキ シユウケイ ヒヨウ *****

カクヒツ	カクヒツ	メンセキ	入ミナリ	メンセキ
------	------	------	------	------

97 BLOCK		3678.02		
----------	--	---------	--	--

1 LOT		267.86		
2 LOT		724.08		
3 LOT		148.17		
4 LOT		310.90		
5 LOT		11.30		
6 LOT		292.64		
7 LOT		70.77		
8 LOT		178.06		
9 LOT		169.60		
10 LOT		179.22		
11 LOT		652.30		
12 LOT		37.28		
13 LOT		635.77		

コウケイ =		3677.95		0.00
--------	--	---------	--	------

97 BLOCK

テコメイ	X	Y	(X-X0)*(YN-1-Y0)	(XN-1-X0)*(Y-Y0)
X0.Y0	- 150600.000	- 39300.000		
97-1	- 150623.601	- 39466.154		
97-2	- 150621.543	- 39464.264	+ 3579.455622	+ 3876.794664
97-3	- 150619.492	- 39401.963	+ 3201.833888	+ 2196.588909
97-4	- 150621.392	- 39399.900	+ 2181.192496	+ 1947.250800
97-5	- 150672.609	- 39397.308	+ 7253.639100	+ 2081.612736
97-6	- 150674.736	- 39399.201	+ 7272.410688	+ 7202.885409
97-7	- 150676.303	- 39421.849	+ 7569.333903	+ 9106.506864
97-8	- 150676.240	- 39431.095	+ 9289.767760	+ 10002.941785
97-9	- 150676.170	- 39461.813	+ 9985.506150	+ 12336.623120
97-10	- 150674.148	- 39463.901	+ 11998.110324	+ 12484.339170
97-1	- 150623.601	- 39466.154	+ 3868.227501	+ 12319.986792
			+ 66199.477432	+ 73555.530249
	ハイ	メンセキ	= 7356.052817	
	メンセキ		= 3678.026408	

1 LOT

テコメイ	X	Y	(X-X0)*(YN-1-Y0)	(XN-1-X0)*(Y-Y0)
X0.Y0	- 150600.000	- 39400.000		
97-1	- 150623.601	- 39466.154		
97-2	- 150621.543	- 39464.264	+ 1425.155622	+ 1516.694664
97-11	- 150621.268	- 39455.918	+ 1366.766752	+ 1204.641474
97-29	- 150642.464	- 39453.754	+ 2374.501952	+ 1143.240072
97-28	- 150642.707	- 39457.089	+ 2295.672078	+ 2424.227296
97-27	- 150647.441	- 39457.259	+ 2708.359249	+ 2445.360113
97-26	- 150647.318	- 39459.145	+ 2709.381362	+ 2805.897945
97-25	- 150646.447	- 39459.173	+ 2747.107815	+ 2799.948014
97-24	- 150646.406	- 39461.939	+ 2745.982238	+ 2876.880733
97-23	- 150648.014	- 39461.927	+ 2973.939146	+ 2873.784362
97-22	- 150648.177	- 39465.059	+ 2983.457079	+ 3123.742826
97-1	- 150623.601	- 39466.154	+ 1535.457459	+ 3187.101258
			+ 25865.780752	+ 26401.518757
	ハイ	メンセキ	= 535.738005	
	メンセキ		= 267.869002	

2 LOT

テコメイ	X	Y	(X-X0)*(YN-1-Y0)	(XN-1-X0)*(Y-Y0)
X0.Y0	- 150600.000	- 39400.000		
97-11	- 150621.268	- 39455.918		
97-12	- 150620.110	- 39420.732	+ 1124.510980	+ 440.928176
97-37	- 150644.521	- 39419.940	+ 923.009372	+ 400.993400
97-36	- 150644.755	- 39420.727	+ 892.414700	+ 922.786767

***** カクヒツ メンセキ リイリン *****

テシメイ	X	Y	(X-X0)*(YN-1-Y0)	(XN-1-X0)*(Y-Y0)
97-35	- 150641.497	- 39420.829	+ 860.108319	+ 932.201895
97-34	- 150642.404	- 39428.495	+ 883.232916	+ 1182.457015
97-33	- 150640.259	- 39428.789	+ 1147.180205	+ 1220.768756
97-32	- 150641.591	- 39440.769	+ 1197.363299	+ 1641.319171
97-31	- 150641.498	- 39440.788	+ 1691.831962	+ 1696.413708
97-30	- 150642.370	- 39452.460	+ 1728.187560	+ 2176.985080
97-29	- 150642.464	- 39453.754	+ 2227.661440	+ 2277.556980
97-11	- 150621.268	- 39455.918	+ 1143.240072	+ 2374.501952
			+ 13818.740825	+ 15266.912900
		ハイ メンセキ	= 1448.172075	
		メンセキ	= 724.086037	

3 LOT

テシメイ	X	Y	(X-X0)*(YN-1-Y0)	(XN-1-X0)*(Y-Y0)
X0.Y0	- 150600.000	- 39400.000		
97-12	- 150620.110	- 39420.732		
97-13	- 150619.903	- 39414.457	+ 412.628996	+ 290.730270
97-38	- 150642.668	- 39413.718	+ 616.851276	+ 273.029354
97-37	- 150644.521	- 39419.940	+ 610.739078	+ 850.799920
97-12	- 150620.110	- 39420.732	+ 400.993400	+ 923.009372
			+ 2041.212750	+ 2337.568916
		ハイ メンセキ	= 296.356166	
		メンセキ	= 148.178083	

4 LOT

テシメイ	X	Y	(X-X0)*(YN-1-Y0)	(XN-1-X0)*(Y-Y0)
X0.Y0	- 150600.000	- 39300.000		
97-13	- 150619.903	- 39414.457		
97-3	- 150619.492	- 39401.963	+ 2230.995844	+ 2029.369589
97-4	- 150621.392	- 39399.900	+ 2181.192496	+ 1947.250800
97-14	- 150640.148	- 39398.951	+ 4010.785200	+ 2116.759792
97-39	- 150640.698	- 39407.103	+ 4027.107798	+ 4299.971244
97-38	- 150642.668	- 39413.718	+ 4569.870804	+ 4628.095164
97-13	- 150619.903	- 39414.457	+ 2263.329354	+ 4883.651276
			+ 19283.281496	+ 19905.097865
		ハイ メンセキ	= 621.816369	
		メンセキ	= 310.908184	

5 LOT

テシメイ	X	Y	(X-X0)*(YN-1-Y0)	(XN-1-X0)*(Y-Y0)
X0.Y0	- 150600.000	- 39300.000		
97-15	- 150641.549	- 39398.880		
97-16	- 150642.145	- 39398.850	+ 4167.297600	+ 4107.118650

***** カクヒツ メンセキ ケイリソ *****

テソメイ	X	Y	(X-X0)*(YN-1-Y0)	(XN-1-X0)*(Y-Y0)
97-41	- 150642.689	- 39406.753	+ 4219.807650	+ 4499.105185
97-43	- 150645.737	- 39417.100	+ 4882.561961	+ 4998.881900
97-42	- 150645.146	- 39417.189	+ 5286.596600	+ 5359.873293
97-40	- 150642.081	- 39406.857	+ 4931.430309	+ 4824.166122
97-15	- 150641.549	- 39398.880	+ 4439.801493	+ 4160.969280
			+ 27927.495613	+ 27950.114430
		ハイ メンセキ =	22.618817	
		メソセキ =	11.309408	

6 LOT

テソメイ	X	Y	(X-X0)*(YN-1-Y0)	(XN-1-X0)*(Y-Y0)
X0.Y0	- 150600.000	- 39300.000		
97-16	- 150642.145	- 39398.850		
97-17	- 150659.580	- 39397.967	+ 5889.483000	+ 4128.819215
97-45	- 150660.137	- 39414.930	+ 5891.441479	+ 6847.529400
97-43	- 150645.737	- 39417.100	+ 5256.553410	+ 7042.042700
97-41	- 150642.689	- 39406.753	+ 4998.881900	+ 4882.561961
97-16	- 150642.145	- 39398.850	+ 4499.105185	+ 4219.807650
			+ 26535.464974	+ 27120.760926
		ハイ メンセキ =	585.295952	
		メソセキ =	292.647976	

7 LOT

テソメイ	X	Y	(X-X0)*(YN-1-Y0)	(XN-1-X0)*(Y-Y0)
X0.Y0	- 150600.000	- 39300.000		
97-17	- 150659.580	- 39397.967		
97-5	- 150672.609	- 39397.308	+ 7113.285903	+ 5797.610640
97-6	- 150674.736	- 39399.201	+ 7272.410688	+ 7202.885409
97-18	- 150674.915	- 39401.793	+ 7431.642915	+ 7607.601648
97-46	- 150659.745	- 39402.991	+ 6081.622785	+ 7715.570765
97-17	- 150659.580	- 39397.967	+ 6136.203780	+ 5853.038415
			+ 34035.166071	+ 34176.706877
		ハイ メンセキ =	141.540806	
		メソセキ =	70.770403	

8 LOT

テソメイ	X	Y	(X-X0)*(YN-1-Y0)	(XN-1-X0)*(Y-Y0)
X0.Y0	- 150600.000	- 39400.000		
97-18	- 150674.915	- 39401.793		
97-19	- 150675.685	- 39412.920	+ 135.703205	+ 967.901800
97-45	- 150660.137	- 39414.930	+ 776.970040	+ 1129.977050
97-46	- 150659.745	- 39402.991	+ 891.992850	+ 179.869767

***** カクヒツ メンセキ ケイサン *****

テンメイ	X	Y	(X-X0)*(YN-1-Y0)	(XN-1-X0)*(Y-Y0)
97-18	- 150674.915	- 39401.793	+ 224.070765	+ 107.122785
			+ 2028.736860	+ 2384.871402
		ハイメンセキ =	= 356.134542	
		メンセキ =	= 178.067271	

9 LOT

テンメイ	X	Y	(X-X0)*(YN-1-Y0)	(XN-1-X0)*(Y-Y0)
X0.Y0	- 150600.000	- 39400.000		
97-19	- 150675.685	- 39412.920		
97-7	- 150676.303	- 39421.849	+ 985.834760	+ 1653.641565
97-47	- 150656.680	- 39423.710	+ 1238.401320	+ 1809.144130
97-44	- 150656.107	- 39415.537	+ 1330.296970	+ 880.637160
97-45	- 150660.137	- 39414.930	+ 934.348569	+ 837.677510
97-19	- 150675.685	- 39412.920	+ 1129.977050	+ 776.970040
			+ 5618.858669	+ 5958.070405
		ハイメンセキ =	= 339.211736	
		メンセキ =	= 169.605868	

10 LOT

テンメイ	X	Y	(X-X0)*(YN-1-Y0)	(XN-1-X0)*(Y-Y0)
X0.Y0	- 150600.000	- 39400.000		
97-7	- 150676.303	- 39421.849		
97-8	- 150676.240	- 39431.095	+ 1665.767760	+ 2372.641785
97-54	- 150671.225	- 39431.157	+ 2214.741375	+ 2375.409680
97-53	- 150667.090	- 39431.701	+ 2090.323130	+ 2257.903725
97-48	- 150657.393	- 39433.881	+ 1819.415493	+ 2273.076290
97-47	- 150656.680	- 39423.710	+ 1920.375080	+ 1360.788030
97-7	- 150676.303	- 39421.849	+ 1809.144130	+ 1238.401320
			+ 11519.766968	+ 11878.220830
		ハイメンセキ =	= 358.453862	
		メンセキ =	= 179.226931	

11 LOT

テンメイ	X	Y	(X-X0)*(YN-1-Y0)	(XN-1-X0)*(Y-Y0)
X0.Y0	- 150600.000	- 39400.000		
97-8	- 150676.240	- 39431.095		
97-9	- 150676.170	- 39461.813	+ 2368.506150	+ 4712.623120
97-10	- 150674.148	- 39463.901	+ 4583.310324	+ 4867.339170
97-20	- 150656.455	- 39464.690	+ 3607.530955	+ 4796.634120
97-49	- 150655.129	- 39434.389	+ 3566.295010	+ 1941.430995
97-48	- 150657.393	- 39433.881	+ 1973.687877	+ 1867.825649
97-53	- 150667.090	- 39431.701	+ 2273.076290	+ 1819.415493

***** カクヒツ メンセキ ケイサン *****

テシメイ	X	Y	(X-X0)*(YN-1-Y0)	(XN-1-X0)*(Y-Y0)
97-54	- 150671.225	- 39431.157	+ 2257.903725	+ 2090.323130
97-8	- 150676.240	- 39431.095	+ 2375.409680	+ 2214.741375
			+ 23005.720011	+ 24310.333052
		ハイ メンセキ	= 1304.613041	
		メンセキ	= 652.306520	

12 LOT

テシメイ	X	Y	(X-X0)*(YN-1-Y0)	(XN-1-X0)*(Y-Y0)
X0.Y0	- 150600.000	- 39400.000		
97-20	- 150656.455	- 39464.690		
97-21	- 150653.785	- 39464.809	+ 3479.351650	+ 3658.792095
97-52	- 150654.813	- 39454.853	+ 3552.375717	+ 2950.268605
97-51	- 150654.904	- 39448.679	+ 3011.649112	+ 2668.242027
97-50	- 150654.334	- 39434.567	+ 2644.924786	+ 1897.866568
97-49	- 150655.129	- 39434.389	+ 1905.644143	+ 1868.491926
97-20	- 150656.455	- 39464.690	+ 1941.430995	+ 3566.295010
			+ 16535.376403	+ 16609.956231
		ハイ メンセキ	= 74.579828	
		メンセキ	= 37.289914	

13 LOT

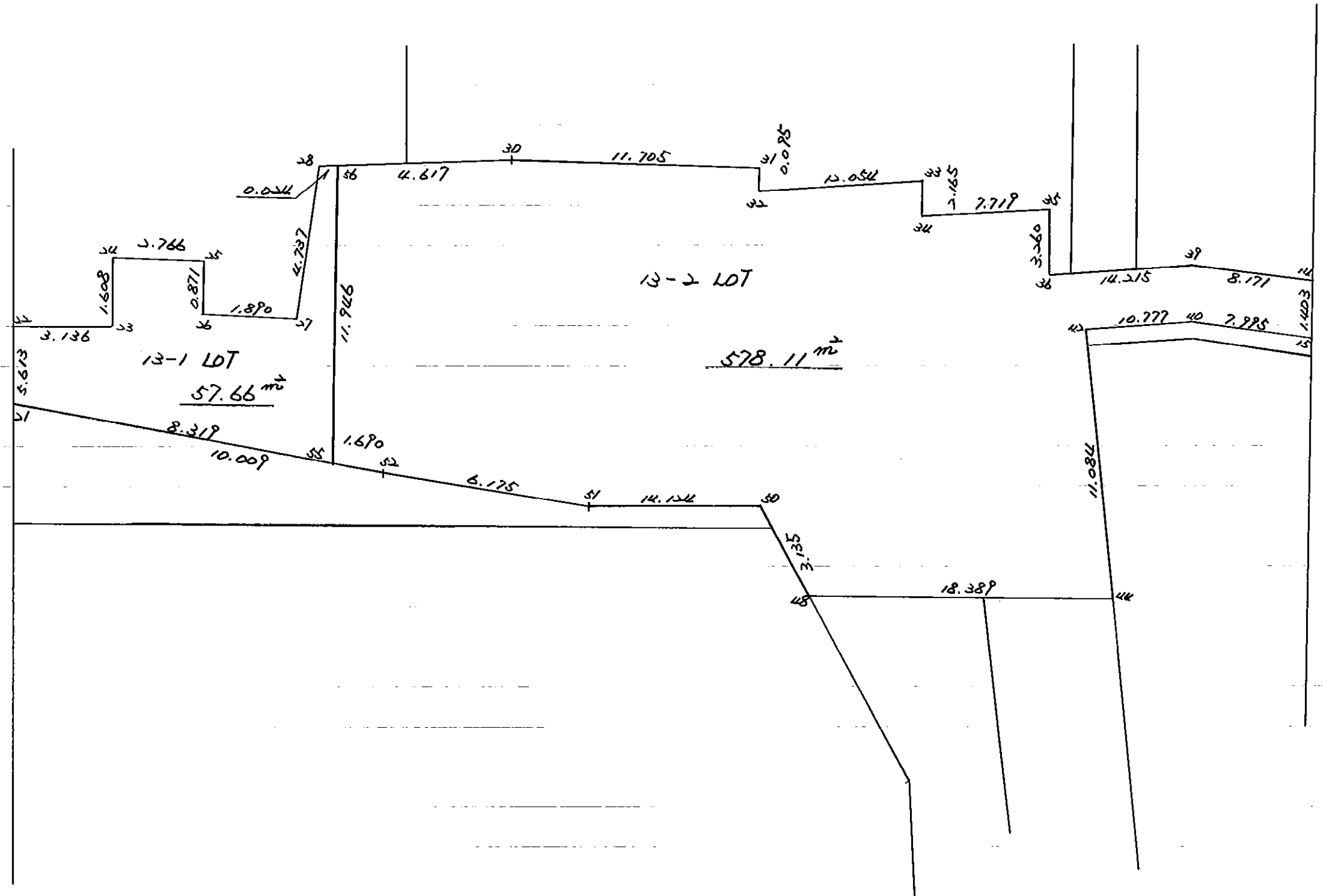
テシメイ	X	Y	(X-X0)*(YN-1-Y0)	(XN-1-X0)*(Y-Y0)
X0.Y0	- 150600.000	- 39300.000		
97-21	- 150653.785	- 39464.809		
97-22	- 150648.177	- 39465.059	+ 7940.003193	+ 8877.698315
97-23	- 150648.014	- 39461.927	+ 7925.142826	+ 7801.157079
97-24	- 150646.406	- 39461.939	+ 7514.384362	+ 7775.339146
97-25	- 150646.447	- 39459.173	+ 7521.580733	+ 7386.582238
97-26	- 150647.318	- 39459.145	+ 7531.748014	+ 7391.807815
97-27	- 150647.441	- 39457.259	+ 7549.997945	+ 7441.181362
97-28	- 150642.707	- 39457.089	+ 6716.060113	+ 7452.459249
97-30	- 150642.370	- 39452.460	+ 6655.860930	+ 6511.109220
97-31	- 150641.498	- 39440.788	+ 6326.785080	+ 5965.187560
97-32	- 150641.591	- 39440.769	+ 5855.513708	+ 5841.631962
97-33	- 150640.259	- 39428.789	+ 5667.219171	+ 5356.463299
97-34	- 150642.404	- 39428.495	+ 5461.168756	+ 5173.080205
97-35	- 150641.497	- 39420.829	+ 5332.157015	+ 5123.632916
97-36	- 150644.755	- 39420.727	+ 5407.701895	+ 5009.808319
97-39	- 150640.698	- 39407.103	+ 4913.347446	+ 4793.394765
97-14	- 150640.148	- 39398.951	+ 4299.971244	+ 4027.107798
97-15	- 150641.549	- 39398.880	+ 4111.315099	+ 3969.834240
97-40	- 150642.081	- 39406.857	+ 4160.969280	+ 4439.801493
97-42	- 150645.146	- 39417.189	+ 4824.166122	+ 4931.436309
97-44	- 150656.107	- 39415.537	+ 6575.123223	+ 5216.033402

***** カクヒツ メンセキ ケイサン *****

テラメイ	X	Y	(X-X0)*(YN-1-Y0)	(XN-1-X0)*(Y-Y0)
97-48	- 150657.393	- 39433.881	+ 6631.015041	+ 7511.661267
97-50	- 150654.334	- 39434.567	+ 7274.290254	+ 7723.203831
97-51	- 150654.904	- 39448.679	+ 7388.266568	+ 8078.324786
97-52	- 150654.813	- 39454.853	+ 8149.542027	+ 8502.049112
97-21	- 150653.785	- 39464.809	+ 8328.768605	+ 9033.675717
			+160062.098650	+161333.655405
		ハイ メンセキ =	1271.556755	
		メンセキ =	635.778377	

97 BL

H42, 11, 2



* * * * 13-1 LOT

面 積 計 算 書 * * * * NO 1

点 名	X	DX	DMD.1	Y	DY	DMD.2	DX * DMD.2	DY * DMD.1
97-21	- 150653.785		- 39464.809					
97-22	- 150648.177	- 5.608	- 39465.059	+ 0.250	+ 0.250	- 1.402000	- 1.402000	
97-23	- 150648.014	- 0.163	- 39461.927	- 3.132	- 2.632	+ 0.429016	+ 35.639028	
97-24	- 150646.406	- 1.608	- 39461.939	+ 0.012	- 5.752	+ 9.249216	- 0.157800	
97-25	- 150646.447	+ 0.041	- 39459.173	- 2.766	- 8.506	- 0.348746	+ 40.707222	
97-26	- 150647.318	+ 0.871	- 39459.145	- 0.028	- 11.300	- 9.842300	+ 0.386540	
97-27	- 150647.441	+ 0.123	- 39457.259	- 1.886	- 13.214	- 1.625322	+ 24.161546	
97-28	- 150642.707	- 4.734	- 39457.089	- 0.170	- 15.270	+ 72.288180	+ 2.961740	
97-56	- 150642.705	- 0.002	- 39457.065	- 0.024	- 15.464	+ 0.030928	+ 0.531792	
97-55	- 150654.639	+ 11.934	- 39456.534	- 0.531	- 16.019	- 191.170746	+ 5.430006	
97-21	- 150653.785	- 0.854	- 39464.809	+ 8.275	- 8.275	+ 7.066850	+ 7.066850	
		+ 12.969		+ 8.537		+ 89.064190	+ 116.884724	
		- 12.969		- 8.537		- 204.389114	- 1.559800	
						- 115.324924	+ 115.324924	
						面 積 =	57.662462	

* * * * 13-2 LOT

面積計算書

* * * * NO 1

点名	X	DX	DMD.1	Y	DY	DMD.2	DX * DMD.2	DY * DMD.1
97-56	- 150642.705			- 39457.065				
97-30	- 150642.370	- 0.335	- 0.335	- 39452.460	- 4.605	- 4.605	+ 1.542675	+ 1.542675
97-31	- 150641.498	- 0.872	- 1.542	- 39440.788	- 11.672	- 20.882	+ 18.209104	+ 17.998224
97-32	- 150641.591	+ 0.093	- 2.321	- 39440.769	- 0.019	- 32.573	+ 3.029289	+ 0.044099
97-33	- 150640.259	- 1.332	- 3.560	- 39428.789	- 11.980	- 44.572	+ 59.369904	+ 42.648800
97-34	- 150642.404	+ 2.145	- 2.747	- 39428.495	- 0.294	- 56.846	+ 121.934670	+ 0.807618
97-35	- 150641.497	- 0.907	- 1.509	- 39420.829	- 7.666	- 64.806	+ 58.779042	+ 11.567994
97-36	- 150644.755	+ 3.258	+ 0.842	- 39420.727	- 0.102	- 72.574	+ 236.446092	+ 0.085884
97-39	- 150640.698	- 4.057	+ 0.043	- 39407.103	- 13.624	- 86.300	+ 350.119100	+ 0.585832
97-14	- 150640.148	- 0.550	- 4.564	- 39398.951	- 8.152	- 108.076	+ 59.441800	+ 37.205728
97-15	- 150641.549	+ 1.401	- 3.713	- 39398.880	- 0.071	- 116.299	+ 162.934899	+ 0.263623
97-40	- 150642.081	+ 0.532	- 1.780	- 39406.857	+ 7.977	- 108.393	+ 57.665076	+ 14.199060
97-42	- 150645.146	+ 3.065	+ 1.817	- 39417.189	+ 10.332	- 90.084	+ 276.107460	+ 18.773244
97-44	- 150656.107	+ 10.961	+ 15.843	- 39415.537	- 1.652	- 81.404	+ 892.269244	+ 26.172636
97-48	- 150657.393	+ 1.286	+ 28.090	- 39433.881	+ 18.344	- 64.712	+ 83.219632	+ 515.282960
97-50	- 150654.334	- 3.059	+ 26.317	- 39434.567	+ 0.686	- 45.682	+ 139.741238	+ 18.053462
97-51	- 150654.904	+ 0.570	+ 23.828	- 39448.679	+ 14.112	- 30.884	+ 17.603880	+ 336.260736
97-52	- 150654.813	- 0.091	+ 24.307	- 39454.853	+ 6.174	- 10.598	+ 0.964418	+ 150.071418
97-55	- 150654.639	- 0.174	+ 24.042	- 39456.534	+ 1.681	- 2.743	+ 0.477282	+ 40.414602
97-56	- 150642.705	- 11.934	+ 11.934	- 39457.065	+ 0.531	- 0.531	+ 6.336954	+ 6.336954
		+ 23.311			+ 59.837		+ 694.981517	+ 1197.272137
		- 23.311			- 59.837		- 1851.210242	- 41.043412
							- 1156.228725	+ 1156.228725

面積 = 578.114362