

カクヒツ . カクヒツ カクヒツ メンセキ 入ミキリ メンセキ

31 BLOCK 6186.71

| | | | |
|--------|--------------------|---------|--------|
| 1 LOT | 325.71 | | |
| 2 LOT | 997.94 | | |
| 3 LOT | 442.81 | 4-1 LOT | 343.74 |
| 4 LOT | 4374.99 | 4-2 LOT | 33.08 |
| 5 LOT | 410.69 | 4-3 LOT | 310.65 |
| 6 LOT | 563.07 | 4-4 LOT | 687.52 |
| 7 LOT | 159.31 | | |
| 8 LOT | 752.15 | | |
| 9 LOT | 93.16 | | |
| 10 LOT | 129.29 | | |
| 11 LOT | 97.75 | | |
| 12 LOT | 137.51 | | |
| 13 LOT | 93.03 | | |
| 14 LOT | 269.30 | | |
| 15 LOT | 195.30 | | |
| 入イロ | 144.58 | | |

シヨウケイ = ~~6186.60~~ 0.00

***** カクヒツ メンセキ ケイリフ *****

31 BLOCK

| テシメイ | X | Y | (X-X0)*(YN-1-Y0) | (XN-1-X0)*(Y-Y0) |
|-------|--------------|-------------|------------------|------------------|
| X0.Y0 | - 149900.000 | - 39600.000 | | |
| 31-12 | - 149934.442 | - 39759.807 | | |
| 31-13 | - 149932.362 | - 39757.033 | + 5171.674134 | + 5408.530586 |
| 31-2 | - 149931.868 | - 39739.488 | + 5004.327644 | + 4514.110656 |
| 31-3 | - 149931.458 | - 39726.942 | + 4388.013504 | + 4045.387656 |
| 31-4 | - 149930.254 | - 39687.385 | + 3840.503263 | + 2748.957330 |
| 31-5 | - 149927.439 | - 39632.873 | + 2397.757015 | + 994.539742 |
| 31-6 | - 149929.340 | - 39630.801 | + 964.493820 | + 845.148639 |
| 31-7 | - 149961.702 | - 39629.730 | + 1900.483302 | + 872.278200 |
| 31-8 | - 149977.252 | - 39644.217 | + 2296.701960 | + 2728.277334 |
| 31-9 | - 149981.503 | - 39757.889 | + 3603.818151 | + 12197.241028 |
| 31-12 | - 149934.442 | - 39759.807 | + 5438.012938 | + 13024.749921 |
| | | | + 35005.785736 | + 47379.221092 |
| | ハイ | メンセキ | = 12373.435356 | |
| | メンセキ | | = 6186.717678 | |

1 LOT

| テシメイ | X | Y | (X-X0)*(YN-1-Y0) | (XN-1-X0)*(Y-Y0) |
|-------|--------------|-------------|------------------|------------------|
| X0.Y0 | - 149900.000 | - 39600.000 | | |
| 31-18 | - 149929.317 | - 39669.242 | | |
| 31-5 | - 149927.439 | - 39632.873 | + 1899.931238 | + 963.737741 |
| 31-6 | - 149929.340 | - 39630.801 | + 964.493820 | + 845.148639 |
| 31-19 | - 149931.627 | - 39630.725 | + 974.143227 | + 901.471500 |
| 31-39 | - 149932.418 | - 39655.311 | + 996.043050 | + 1749.320997 |
| 31-38 | - 149945.228 | - 39654.883 | + 2501.605908 | + 1779.197094 |
| 31-37 | - 149945.756 | - 39668.617 | + 2511.226548 | + 3103.409676 |
| 31-18 | - 149929.317 | - 39669.242 | + 2011.644589 | + 3168.236952 |
| | | | + 11859.088380 | + 12510.522599 |
| | ハイ | メンセキ | = 651.434219 | |
| | メンセキ | | = 325.717109 | |

2 LOT

| テシメイ | X | Y | (X-X0)*(YN-1-Y0) | (XN-1-X0)*(Y-Y0) |
|-------|--------------|-------------|------------------|------------------|
| X0.Y0 | - 149900.000 | - 39600.000 | | |
| 31-19 | - 149931.627 | - 39630.725 | | |
| 31-7 | - 149961.702 | - 39629.730 | + 1895.793950 | + 940.270710 |
| 31-8 | - 149977.252 | - 39644.217 | + 2296.701960 | + 2728.277334 |
| 31-20 | - 149977.610 | - 39653.801 | + 3431.681370 | + 4156.234852 |
| 31-39 | - 149932.418 | - 39655.311 | + 1744.120818 | + 4292.686710 |
| 31-19 | - 149931.627 | - 39630.725 | + 1749.320997 | + 996.043050 |
| | | | + 11117.619095 | + 13113.512656 |
| | ハイ | メンセキ | = 1995.893561 | |
| | メンセキ | | = 997.946780 | |

***** カクヒツ メンセキ ケイリソ *****

3 LOT

| テソメイ | X | Y | (X-X0)*(YN-1-Y0) | (XN-1-X0)*(Y-Y0) |
|-------|--------------|-------------|------------------|------------------|
| X0.Y0 | - 149900.000 | - 39600.000 | | |
| 31-20 | - 149977.610 | - 39653.801 | | |
| 31-21 | - 149978.118 | - 39667.388 | + 4202.826518 | + 5229.982680 |
| 31-37 | - 149945.756 | - 39668.617 | + 3083.405328 | + 5360.222806 |
| 31-38 | - 149945.228 | - 39654.883 | + 3103.409676 | + 2511.226548 |
| 31-20 | - 149977.610 | - 39653.801 | + 4259.469630 | + 2433.311628 |
| | | | + 14649.111152 | + 15534.743662 |
| | ハイ | メンセキ | = 885.632510 | |
| | メンセキ | | = 442.816255 | |

4 LOT

| テソメイ | X | Y | (X-X0)*(YN-1-Y0) | (XN-1-X0)*(Y-Y0) |
|-------|--------------|-------------|------------------|------------------|
| X0.Y0 | - 149900.000 | - 39600.000 | | |
| 31-17 | - 149930.561 | - 39697.464 | | |
| 31-4 | - 149930.254 | - 39687.385 | + 2948.675856 | + 2670.572985 |
| 31-18 | - 149929.317 | - 39669.242 | + 2561.866045 | + 2094.847468 |
| 31-21 | - 149978.118 | - 39667.388 | + 5409.046556 | + 1975.613996 |
| 31-22 | - 149979.174 | - 39695.618 | + 5335.377512 | + 7469.486924 |
| 31-17 | - 149930.561 | - 39697.464 | + 2922.181698 | + 7716.614736 |
| | | | + 19177.147667 | + 21927.136109 |
| | ハイ | メンセキ | = 2749.988442 | |
| | メンセキ | | = 1374.994221 | |

5 LOT

| テソメイ | X | Y | (X-X0)*(YN-1-Y0) | (XN-1-X0)*(Y-Y0) |
|-------|--------------|-------------|------------------|------------------|
| X0.Y0 | - 149900.000 | - 39600.000 | | |
| 31-22 | - 149979.174 | - 39695.618 | | |
| 31-23 | - 149979.639 | - 39708.059 | + 7614.921902 | + 8555.463266 |
| 31-36 | - 149946.665 | - 39709.306 | + 5042.573235 | + 8705.020534 |
| 31-35 | - 149946.205 | - 39696.870 | + 5050.483730 | + 4520.438550 |
| 31-22 | - 149979.174 | - 39695.618 | + 7669.585380 | + 4418.029690 |
| | | | + 25377.564247 | + 26198.952040 |
| | ハイ | メンセキ | = 821.387793 | |
| | メンセキ | | = 410.693896 | |

6 LOT

| テソメイ | X | Y | (X-X0)*(YN-1-Y0) | (XN-1-X0)*(Y-Y0) |
|-------|--------------|-------------|------------------|------------------|
| X0.Y0 | - 149900.000 | - 39700.000 | | |
| 31-23 | - 149979.639 | - 39708.059 | | |
| 31-24 | - 149980.277 | - 39725.116 | + 646.952343 | + 2000.213124 |

***** カクヒツ メンセキ ケイリン *****

| テシメイ | X | Y | (X-X0)*(YN-1-Y0) | (XN-1-X0)*(Y-Y0) |
|-------|--------------|-------------|------------------|------------------|
| 31-31 | - 149947.295 | - 39726.350 | + 1187.861220 | + 2115.298950 |
| 31-36 | - 149946.665 | - 39709.306 | + 1229.622750 | + 440.127270 |
| 31-23 | - 149979.639 | - 39708.059 | + 741.120534 | + 376.073235 |
| | | | + 3805.556847 | + 4931.712579 |
| | | ハイ メンセキ = | 1126.155732 | |
| | | メンセキ = | 563.077866 | |

7 LOT

| テシメイ | X | Y | (X-X0)*(YN-1-Y0) | (XN-1-X0)*(Y-Y0) |
|-------|--------------|-------------|------------------|------------------|
| X0.Y0 | - 149900.000 | - 39700.000 | | |
| 31-24 | - 149980.277 | - 39725.116 | | |
| 31-25 | - 149980.473 | - 39730.348 | + 2021.159868 | + 2436.246396 |
| 31-34 | - 149950.037 | - 39731.483 | + 1518.522876 | + 2533.531459 |
| 31-32 | - 149949.873 | - 39726.254 | + 1570.151659 | + 1313.671398 |
| 31-24 | - 149980.277 | - 39725.116 | + 2107.592358 | + 1252.610268 |
| | | | + 7217.426761 | + 7536.059521 |
| | | ハイ メンセキ = | 318.632760 | |
| | | メンセキ = | 159.316380 | |

8 LOT

| テシメイ | X | Y | (X-X0)*(YN-1-Y0) | (XN-1-X0)*(Y-Y0) |
|-------|--------------|-------------|------------------|------------------|
| X0.Y0 | - 149900.000 | - 39700.000 | | |
| 31-11 | - 149981.391 | - 39754.896 | | |
| 31-26 | - 149950.732 | - 39756.135 | + 2784.983872 | + 4568.883785 |
| 31-33 | - 149950.263 | - 39738.717 | + 2821.513505 | + 1964.190844 |
| 31-34 | - 149950.037 | - 39731.483 | + 1937.282529 | + 1582.430029 |
| 31-25 | - 149980.473 | - 39730.348 | + 2533.531459 | + 1518.522876 |
| 31-11 | - 149981.391 | - 39754.896 | + 2470.054068 | + 4417.645808 |
| | | | + 12547.365433 | + 14051.673342 |
| | | ハイ メンセキ = | 1504.307909 | |
| | | メンセキ = | 752.153954 | |

9 LOT

| テシメイ | X | Y | (X-X0)*(YN-1-Y0) | (XN-1-X0)*(Y-Y0) |
|-------|--------------|-------------|------------------|------------------|
| X0.Y0 | - 149900.000 | - 39700.000 | | |
| 31-26 | - 149950.732 | - 39756.135 | | |
| 31-27 | - 149945.387 | - 39756.351 | + 2547.799245 | + 2858.798932 |
| 31-29 | - 149944.917 | - 39738.953 | + 2531.117867 | + 1767.959811 |
| 31-33 | - 149950.263 | - 39738.717 | + 1957.894639 | + 1739.051489 |
| 31-26 | - 149950.732 | - 39756.135 | + 1964.190844 | + 2821.513505 |
| | | | + 9001.002595 | + 9187.323737 |
| | | ハイ メンセキ = | 186.321142 | |
| | | メンセキ = | 93.160571 | |

***** カクヒツ メンセキ ケイサン *****

10 LOT

| テコメイ | X | Y | (X-X0)*(YN-1-Y0) | (XN-1-X0)*(Y-Y0) |
|-------|--------------|-------------|------------------|------------------|
| X0.Y0 | - 149900.000 | - 39700.000 | | |
| 31-10 | - 149932.358 | - 39756.877 | | |
| 31-14 | - 149932.079 | - 39746.974 | + 1824.557283 | + 1519.984692 |
| 31-28 | - 149945.119 | - 39746.438 | + 2119.419906 | + 1489.684602 |
| 31-27 | - 149945.387 | - 39756.351 | + 2107.681506 | + 2542.500769 |
| 31-10 | - 149932.358 | - 39756.877 | + 1823.405658 | + 2581.476399 |
| | | | + 7875.064353 | + 8133.646462 |
| | | ハイ メンセキ | = 258.582109 | |
| | | メンセキ | = 129.291054 | |

11 LOT

| テコメイ | X | Y | (X-X0)*(YN-1-Y0) | (XN-1-X0)*(Y-Y0) |
|-------|--------------|-------------|------------------|------------------|
| X0.Y0 | - 149900.000 | - 39700.000 | | |
| 31-14 | - 149932.079 | - 39746.974 | | |
| 31-2 | - 149931.868 | - 39739.488 | + 1496.967432 | + 1266.735552 |
| 31-29 | - 149944.917 | - 39738.953 | + 1773.682496 | + 1241.354204 |
| 31-28 | - 149945.119 | - 39746.438 | + 1757.520407 | + 2085.855646 |
| 31-14 | - 149932.079 | - 39746.974 | + 1489.684602 | + 2119.419906 |
| | | | + 6517.854937 | + 6713.365308 |
| | | ハイ メンセキ | = 195.510371 | |
| | | メンセキ | = 97.755185 | |

12 LOT

| テコメイ | X | Y | (X-X0)*(YN-1-Y0) | (XN-1-X0)*(Y-Y0) |
|-------|--------------|-------------|------------------|------------------|
| X0.Y0 | - 149900.000 | - 39700.000 | | |
| 31-2 | - 149931.868 | - 39739.488 | | |
| 31-15 | - 149931.523 | - 39728.940 | + 1244.780224 | + 922.259920 |
| 31-30 | - 149944.635 | - 39728.498 | + 1291.736900 | + 898.342454 |
| 31-29 | - 149944.917 | - 39738.953 | + 1280.044666 | + 1738.667155 |
| 31-2 | - 149931.868 | - 39739.488 | + 1241.354204 | + 1773.682496 |
| | | | + 5057.915994 | + 5332.952025 |
| | | ハイ メンセキ | = 275.036031 | |
| | | メンセキ | = 137.518015 | |

13 LOT

| テコメイ | X | Y | (X-X0)*(YN-1-Y0) | (XN-1-X0)*(Y-Y0) |
|-------|--------------|-------------|------------------|------------------|
| X0.Y0 | - 149900.000 | - 39700.000 | | |
| 31-15 | - 149931.523 | - 39728.940 | | |
| 31-3 | - 149931.458 | - 39726.942 | + 910.394520 | + 849.292666 |
| 31-32 | - 149949.873 | - 39726.254 | + 1343.678366 | + 825.898332 |

***** カクヒツ メンセキ ケイサン *****

| テシメイ | X | Y | (X-X0)*(YN-1-Y0) | (XN-1-X0)*(Y-Y0) |
|-------|--------------|-------------|------------------|------------------|
| 31-33 | - 149950.263 | - 39738.717 | + 1319.604802 | + 1930.932941 |
| 31-29 | - 149944.917 | - 39738.953 | + 1739.051489 | + 1957.894639 |
| 31-30 | - 149944.635 | - 39728.498 | + 1738.667155 | + 1280.044666 |
| 31-15 | - 149931.523 | - 39728.940 | + 898.342454 | + 1291.736900 |
| | | | + 7949.738786 | + 8135.800144 |
| | | ハイ | = 186.061358 | |
| | | メンセキ | = 93.030679 | |

14 LOT

| テシメイ | X | Y | (X-X0)*(YN-1-Y0) | (XN-1-X0)*(Y-Y0) |
|-------|--------------|-------------|------------------|------------------|
| X0.Y0 | - 149900.000 | - 39700.000 | | |
| 31-3 | - 149931.458 | - 39726.942 | | |
| 31-16 | - 149930.939 | - 39709.900 | + 833.558538 | + 311.434200 |
| 31-36 | - 149946.665 | - 39709.306 | + 461.983500 | + 287.918334 |
| 31-31 | - 149947.295 | - 39726.350 | + 440.127270 | + 1229.622750 |
| 31-3 | - 149931.458 | - 39726.942 | + 828.918300 | + 1274.221890 |
| | | | + 2564.587608 | + 3103.197174 |
| | | ハイ | = 538.609566 | |
| | | メンセキ | = 269.304783 | |

15 LOT

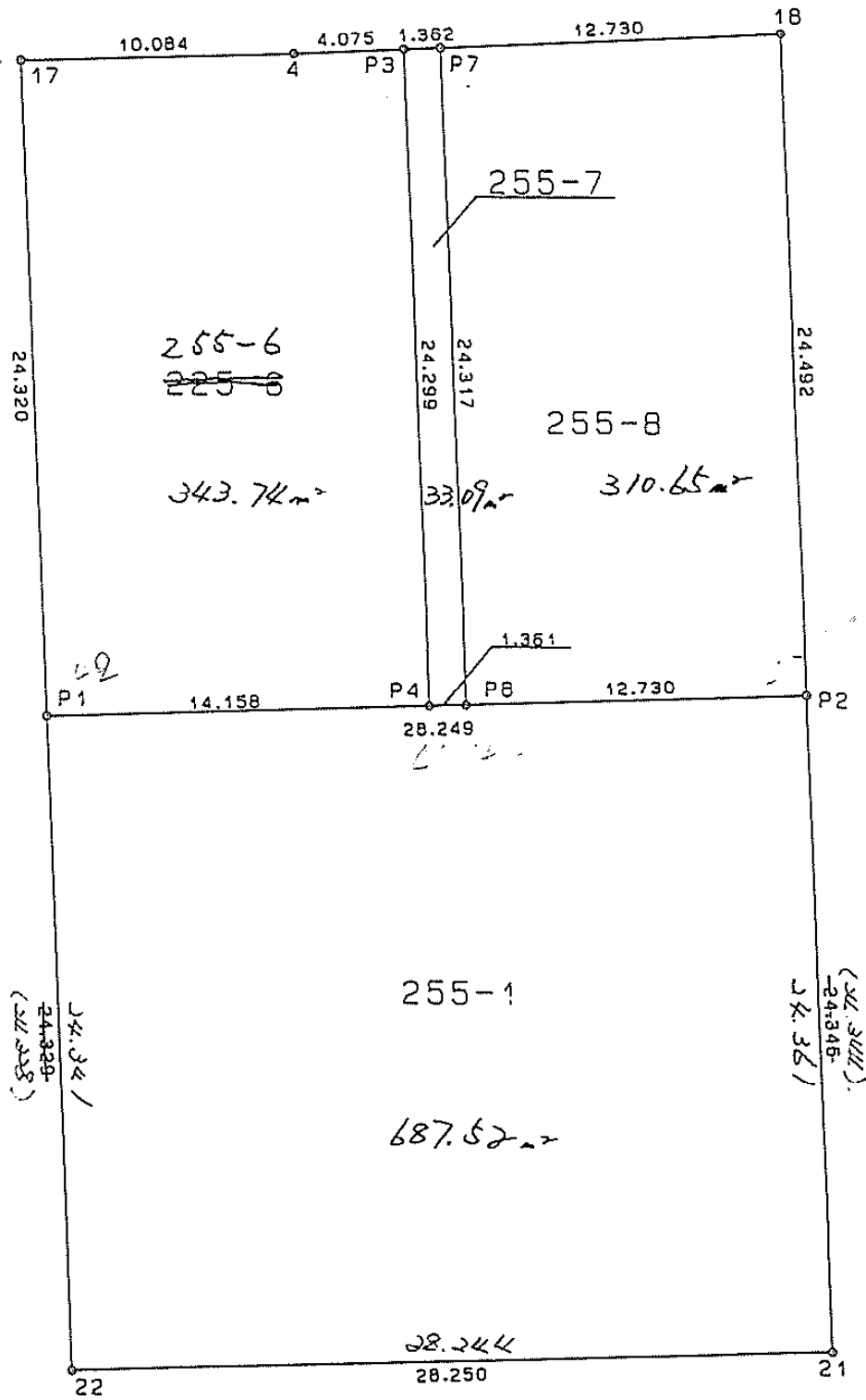
| テシメイ | X | Y | (X-X0)*(YN-1-Y0) | (XN-1-X0)*(Y-Y0) |
|-------|--------------|-------------|------------------|------------------|
| X0.Y0 | - 149900.000 | - 39600.000 | | |
| 31-16 | - 149930.939 | - 39709.900 | | |
| 31-17 | - 149930.561 | - 39697.464 | + 3358.653900 | + 3015.438696 |
| 31-35 | - 149946.205 | - 39696.870 | + 4503.324120 | + 2960.444070 |
| 31-36 | - 149946.665 | - 39709.306 | + 4520.438550 | + 5050.483730 |
| 31-16 | - 149930.939 | - 39709.900 | + 3381.818334 | + 5128.483500 |
| | | | + 15764.234904 | + 16154.849996 |
| | | ハイ | = 390.615092 | |
| | | メンセキ | = 195.307546 | |

入イロ

| テシメイ | X | Y | (X-X0)*(YN-1-Y0) | (XN-1-X0)*(Y-Y0) |
|-------|--------------|-------------|------------------|------------------|
| X0.Y0 | - 149900.000 | - 39700.000 | | |
| 31-12 | - 149934.442 | - 39759.807 | | |
| 31-13 | - 149932.362 | - 39757.033 | + 1935.474134 | + 1964.330586 |
| 31-10 | - 149932.358 | - 39756.877 | + 1845.473814 | + 1840.653474 |
| 31-11 | - 149981.391 | - 39754.896 | + 4629.275907 | + 1776.324768 |
| 31-9 | - 149981.503 | - 39757.889 | + 4474.188688 | + 4711.643599 |
| 31-12 | - 149934.442 | - 39759.807 | + 1993.812938 | + 4874.449921 |
| | | | + 14878.225481 | + 15167.402348 |
| | | ハイ | = 289.176867 | |
| | | メンセキ | = 144.588433 | |

岡山市今村

縮尺 1/300



| 測点名 | X 座標 | Y 座標 |
|-----|----------|----------|
| 17 | -930.561 | -697.464 |
| 4 | -930.254 | -687.385 |
| 18 | -929.317 | -669.242 |
| 21 | -978.118 | -667.388 |
| 22 | -979.174 | -695.618 |
| P1 | -954.863 | -696.541 |
| P2 | -953.791 | -668.312 |
| P3 | -930.044 | -683.315 |
| P4 | -954.326 | -682.393 |
| P7 | -929.974 | -681.955 |
| P8 | -954.274 | -681.033 |

岡山市富田町1丁目5番17号
 書野 敏久
 TEL(23) 7036

* * 座標面積成果表 * *

地番 (31-4-2)

| NO | 点名 | X | Y | 緯距 | 經距 | 倍橫距 | 倍積 | 方向角 | 內角 | 辺長 | 測線 |
|------|-------|-------------|------------|---------|--------|-------|------------|-----------|------------|--------|-------------|
| 4716 | 31-40 | -149930.044 | -39683.315 | | | | | | | | |
| 4719 | 31-41 | -149929.974 | -39681.955 | 0.070 | 1.360 | 1.360 | 0.095200 | 87-03-13 | 270-46-25 | 1.362 | 4716 - 4719 |
| 4721 | 31-44 | -149954.274 | -39681.033 | -24.300 | 0.922 | 3.642 | -88.500600 | 177-49-38 | 269-58-59 | 24.317 | 4719 - 4721 |
| 4717 | 31-43 | -149954.326 | -39682.393 | -0.052 | -1.360 | 3.204 | -0.166608 | 267-48-37 | 270-00-55 | 1.361 | 4721 - 4717 |
| 4716 | 31-40 | -149930.044 | -39683.315 | 24.282 | -0.922 | 0.922 | 22.388004 | 357-49-32 | 269-13-41 | 24.299 | 4717 - 4716 |
| | | | | | | 倍面積 | -66.184004 | | 1080-00-00 | 51.339 | |
| | | | | | | 面積 | 33.0920020 | 坪數 | 10.0103 | | |

* * 座標面積成果表 * *

地番 (31-4-1)

| NO | 点名 | X | Y | 緯距 | 經距 | 倍橫距 | 倍積 | 方向角 | 內角 | 邊長 | 測線 |
|------|-------|-------------|------------|---------|---------|--------|-------------|-----------|------------|--------|-------------|
| 1414 | 31-17 | -149930.561 | -39697.464 | | | | | | | | |
| 494 | 31-4 | -149930.254 | -39687.385 | 0.307 | 10.079 | 10.079 | 3.094253 | 88-15-19 | 178-47-28 | 10.084 | 1414 - 494 |
| 4716 | 31-40 | -149930.044 | -39683.315 | 0.210 | 4.070 | 24.228 | 5.087880 | 87-02-47 | 270-46-45 | 4.075 | 494 - 4716 |
| 4717 | 31-43 | -149954.326 | -39682.393 | -24.282 | 0.922 | 29.220 | -709.520040 | 177-49-32 | 270-00-03 | 24.299 | 4716 - 4717 |
| 4718 | 31-42 | -149954.863 | -39696.541 | -0.537 | -14.148 | 15.994 | -8.588778 | 267-49-35 | 269-59-55 | 14.158 | 4717 - 4718 |
| 1414 | 31-17 | -149930.561 | -39697.464 | 24.302 | -0.923 | 0.923 | 22.430746 | 357-49-30 | 270-25-49 | 24.320 | 4718 - 1414 |
| | | | | | | 倍面積 | -687.495939 | | 1260-00-00 | 76.936 | |
| | | | | | | 面積 | 343.7479695 | 坪數 | 103.9837 | | |

* * 座標面積成果表 * *

地番 (31-4-3)

| NO | 点名 | X | Y | 緯距 | 經距 | 倍橫距 | 倍積 | 方向角 | 內角 | 邊長 | 測線 |
|------|-------|-------------|------------|---------|---------|--------|-------------|-----------|------------|--------|-------------|
| 4719 | 31-41 | -149929.974 | -39681.955 | | | | | | | | |
| 1407 | 31-18 | -149929.317 | -39669.242 | 0.657 | 12.713 | 12.713 | 8.352441 | 87-02-30 | 270-46-56 | 12.730 | 4719 - 1407 |
| 4720 | 31-45 | -149953.791 | -39668.312 | -24.474 | 0.930 | 26.356 | -645.036744 | 177-49-26 | 270-00-06 | 24.492 | 1407 - 4720 |
| 4721 | 31-44 | -149954.274 | -39681.033 | -0.483 | -12.721 | 14.565 | -7.034895 | 267-49-32 | 270-00-06 | 12.730 | 4720 - 4721 |
| 4719 | 31-41 | -149929.974 | -39681.955 | 24.300 | -0.922 | 0.922 | 22.404600 | 357-49-38 | 269-12-52 | 24.317 | 4721 - 4719 |
| | | | | | | 倍面積 | -621.314598 | | 1080-00-00 | 74.269 | |
| | | | | | | 面積 | 310.6572990 | 坪數 | 93.9738 | | |

* * 座標面積成果表 * *

地番 (31-4-4)

| NO | 点名 | X | Y | 緯距 | 經距 | 倍橫距 | 倍積 | 方向角 | 內角 | 辺長 | 測線 |
|------|-------|-------------|------------|---------|---------|--------|--------------|-----------|------------|-----------------------------|-------------|
| 4718 | 31-42 | -149954.863 | -39696.541 | | | | | | | | |
| 4720 | 31-45 | -149953.791 | -39668.312 | 1.072 | 28.229 | 28.229 | 30.261488 | 87-49-31 | 269-59-58 | 28.249 | 4718 - 4720 |
| 1413 | 31-21 | -149978.118 | -39667.388 | -24.327 | 0.924 | 57.382 | -1395.931914 | 177-49-29 | 270-01-59 | 24.345 24.344 | 4720 - 1413 |
| 1415 | 31-22 | -149979.174 | -39695.618 | -1.056 | -28.230 | 30.076 | -31.760256 | 267-51-28 | 269-58-05 | 28.250 | 1413 - 1415 |
| 4718 | 31-42 | -149954.863 | -39696.541 | 24.311 | -0.923 | 0.923 | 22.439053 | 357-49-33 | 269-59-58 | 24.329 24.328 | 1415 - 4718 |
| | | | | | | 倍面積 | -1374.991629 | | 1080-00-00 | 105.173 | |
| | | | | | | 面積 | 687.4958145 | 坪數 | 207.9674 | | |

調整 687.52 m² ± 1/3