

\* \* \* 各筆面積 集計表 \* \* \*

街区名・筆名	各筆面積	隅切面積
12-3 BLOCK	12426.61	
1 LOT	2064.55	
2 LOT	140.96	
3 LOT	128.75	
4 LOT	989.70	
5 LOT	371.41	
6 LOT	2394.10	
7 LOT	2370.07	
8 LOT	631.69	
9 LOT	297.77	
10 LOT	1595.48	
11 LOT	294.49	
12 LOT	258.91	
13 LOT	4.03	
14 LOT	227.30	
15 LOT	225.44	
16 LOT	49.18	
17 LOT	49.36	
トウ口	333.31	
合計 =	12426.50	0.00

\* \* \* \* \* 各 筆 面 積 計 算 書 \* \* \* \* \*

12-3 BLOCK

点 名	X	Y	(X-X0)*(YN-1-Y0)	(XN-1-X0)*(Y-Y0)
X0·Y0	- 149600.000	- 39800.000		
12-1-26	- 149608.240	- 39942.394		
12-1-25	- 149605.918	- 39838.896	+ 842.687692	+ 320.503040
12-3-3	- 149606.918	- 39838.867	+ 269.082528	+ 230.014906
12-3-4	- 149606.726	- 39830.574	+ 261.419442	+ 211.510932
12-3-5	- 149608.688	- 39828.323	+ 265.626912	+ 190.500498
12-3-6	- 149668.578	- 39820.658	+ 1942.334694	+ 179.476704
12-3-7	- 149671.517	- 39820.344	+ 1477.398186	+ 1395.150832
12-3-8	- 149672.980	- 39820.265	+ 1484.705120	+ 1449.292005
12-3-9	- 149675.106	- 39820.236	+ 1522.023090	+ 1476.823280
12-3-10	- 149676.592	- 39820.276	+ 1549.915712	+ 1522.849256
12-3-11	- 149679.042	- 39820.456	+ 1602.655592	+ 1566.765952
12-3-12	- 149681.032	- 39820.700	+ 1657.590592	+ 1636.169400
12-3-13	- 149682.861	- 39820.958	+ 1715.222700	+ 1698.268656
12-3-14	- 149690.215	- 39838.400	+ 1890.725970	+ 3181.862400
12-3-15	- 149694.457	- 39840.638	+ 3627.148800	+ 3666.157170
12-3-16	- 149698.718	- 39850.412	+ 4011.702084	+ 4761.766284
12-3-17	- 149703.239	- 39860.557	+ 5204.484468	+ 5978.065926
12-3-18	- 149707.594	- 39870.150	+ 6515.569858	+ 7242.215850
12-3-19	- 149712.073	- 39879.770	+ 7861.920950	+ 8582.773380
12-3-20	- 149712.815	- 39881.346	+ 8999.252550	+ 9116.690258
12-3-21	- 149715.465	- 39887.111	+ 9392.615890	+ 9827.427465
12-3-22	- 149718.413	- 39946.453	+ 10315.074843	+ 16910.195645
12-3-23	- 149680.223	- 39950.242	+ 11748.899019	+ 17790.605946
12-3-24	- 149629.509	- 39943.548	+ 4433.491178	+ 11515.851204
12-3-1	- 149614.178	- 39941.530	+ 2035.223544	+ 4176.408770
12-1-26	- 149608.240	- 39942.394	+ 1166.207200	+ 2018.862132
			+ 91792.978614	+116646.207891
		倍面積	= 24853.229277	
		面積	= 12426.614638	

1 LOT

点 名	X	Y	(X-X0)*(YN-1-Y0)	(XN-1-X0)*(Y-Y0)
X0·Y0	- 149600.000	- 39800.000		
12-3-32	- 149609.671	- 39872.721		
12-3-5	- 149608.688	- 39828.323	+ 631.800048	+ 273.911733
12-3-33	- 149652.816	- 39822.675	+ 1495.907568	+ 197.000400
12-3-60	- 149658.378	- 39866.388	+ 1323.721150	+ 3506.348608
12-3-32	- 149609.671	- 39872.721	+ 642.038348	+ 4245.306538
			+ 4093.467114	+ 8222.567279
		倍面積	= 4129.100165	
		面積	= 2064.550082	

\* \* \* \* \* 各 筆 面 積 計 算 書 \* \* \* \* \*

2 LOT

点 名	X	Y	(X-X0)*(YN-1-Y0)	(XN-1-X0)*(Y-Y0)
X0·Y0	- 149600.000	- 39800.000		
12-3-60	- 149658.378	- 39866.388		
12-3-33	- 149652.816	- 39822.675	+ 3506.348608	+ 1323.721150
12-3-34	- 149655.990	- 39822.269	+ 1269.573250	+ 1176.159504
12-3-61	- 149661.550	- 39865.976	+ 1370.656950	+ 3693.996240
12-3-60	- 149658.378	- 39866.388	+ 3851.546928	+ 4086.181400
			+ 9998.125736	+ 10280.058294
		倍面積	= 281.932558	
		面積	= 140.966279	

3 LOT

点 名	X	Y	(X-X0)*(YN-1-Y0)	(XN-1-X0)*(Y-Y0)
X0·Y0	- 149600.000	- 39800.000		
12-3-61	- 149661.550	- 39865.976		
12-3-34	- 149655.990	- 39822.269	+ 3693.996240	+ 1370.656950
12-3-35	- 149658.889	- 39821.898	+ 1311.399141	+ 1226.069020
12-3-62	- 149664.448	- 39865.599	+ 1411.282304	+ 3863.059511
12-3-61	- 149661.550	- 39865.976	+ 4037.618450	+ 4252.021248
			+ 10454.296135	+ 10711.806729
		倍面積	= 257.510594	
		面積	= 128.755297	

4 LOT

点 名	X	Y	(X-X0)*(YN-1-Y0)	(XN-1-X0)*(Y-Y0)
X0·Y0	- 149600.000	- 39800.000		
12-3-62	- 149664.448	- 39865.599		
12-3-35	- 149658.889	- 39821.898	+ 3863.059511	+ 1411.282304
12-3-6	- 149668.578	- 39820.658	+ 1501.721044	+ 1216.528962
12-3-7	- 149671.517	- 39820.344	+ 1477.398186	+ 1395.150832
12-3-8	- 149672.980	- 39820.265	+ 1484.705120	+ 1449.292005
12-3-9	- 149675.106	- 39820.236	+ 1522.023090	+ 1476.823280
12-3-10	- 149676.592	- 39820.276	+ 1549.915712	+ 1522.849256
12-3-11	- 149679.042	- 39820.456	+ 1602.655592	+ 1566.765952
12-3-12	- 149681.032	- 39820.700	+ 1657.590592	+ 1636.169400
12-3-13	- 149682.861	- 39820.958	+ 1715.222700	+ 1698.268656
12-3-14	- 149690.215	- 39838.400	+ 1890.725970	+ 3181.862400
12-3-15	- 149694.457	- 39840.638	+ 3627.148800	+ 3666.157170
12-3-36	- 149694.791	- 39841.404	+ 3852.116658	+ 3910.897628
12-3-64	- 149679.233	- 39843.473	+ 3280.563132	+ 4120.849143
12-3-63	- 149682.043	- 39863.312	+ 3566.655339	+ 5016.399696
12-3-62	- 149664.448	- 39865.599	+ 4080.331776	+ 5381.938757
			+ 36671.833222	+ 38651.235441
		倍面積	= 1979.402219	
		面積	= 989.701109	

\* \* \* \* \* 各 筆 面 積 計 算 書 \* \* \* \* \*

5 LOT

点 名	X	Y	(X-X0)*(YN-1-Y0)	(XN-1-X0)*(Y-Y0)
X0·Y0	- 149600.000	- 39800.000		
12-3-63	- 149682.043	- 39863.312		
12-3-64	- 149679.233	- 39843.473	+ 5016.399696	+ 3566.655339
12-3-36	- 149694.791	- 39841.404	+ 4120.849143	+ 3280.563132
12-3-16	- 149698.718	- 39850.412	+ 4087.320072	+ 4778.603892
12-3-17	- 149703.239	- 39860.557	+ 5204.484468	+ 5978.065926
12-3-63	- 149682.043	- 39863.312	+ 4968.277951	+ 6536.267568
			+ 23397.331330	+ 24140.155857
		倍面積	= 742.824527	
		面積	= 371.412263	

6 LOT

点 名	X	Y	(X-X0)*(YN-1-Y0)	(XN-1-X0)*(Y-Y0)
X0·Y0	- 149600.000	- 39800.000		
12-3-31	- 149609.830	- 39879.897		
12-3-32	- 149609.671	- 39872.721	+ 772.683887	+ 714.847430
12-3-17	- 149703.239	- 39860.557	+ 7507.643319	+ 585.646747
12-3-18	- 149707.594	- 39870.150	+ 6515.569858	+ 7242.215850
12-3-19	- 149712.073	- 39879.770	+ 7861.920950	+ 8582.773380
12-3-20	- 149712.815	- 39881.346	+ 8999.252550	+ 9116.690258
12-3-59	- 149703.379	- 39882.370	+ 8409.468134	+ 9292.571550
12-3-58	- 149680.822	- 39887.562	+ 6657.308140	+ 9052.071998
12-3-57	- 149665.768	- 39892.822	+ 5758.777616	+ 7502.059684
12-3-56	- 149654.870	- 39896.170	+ 5093.143140	+ 6324.908560
12-3-55	- 149643.332	- 39899.091	+ 4167.238440	+ 5437.123170
12-3-54	- 149629.391	- 39902.179	+ 2912.383581	+ 4427.620428
12-3-53	- 149623.393	- 39902.913	+ 2390.273347	+ 3024.715983
12-3-66	- 149623.181	- 39878.460	+ 2385.626253	+ 1835.414780
12-3-31	- 149609.830	- 39879.897	+ 771.261800	+ 1852.092357
			+ 70202.551015	+ 74990.752175
		倍面積	= 4788.201160	
		面積	= 2394.100580	

7 LOT

点 名	X	Y	(X-X0)*(YN-1-Y0)	(XN-1-X0)*(Y-Y0)
X0·Y0	- 149600.000	- 39800.000		
12-3-20	- 149712.815	- 39881.346		
12-3-21	- 149715.465	- 39887.111	+ 9392.615890	+ 9827.427465
12-3-37	- 149716.816	- 39914.301	+ 10175.958576	+ 13197.764965
12-3-45	- 149638.960	- 39922.953	+ 4453.166960	+ 14362.877648
12-3-47	- 149637.987	- 39914.200	+ 4670.615611	+ 4449.232000
12-3-48	- 149629.643	- 39915.121	+ 3385.230600	+ 4373.101427

\* \* \* \* \* 各 筆 面 積 計 算 書 \* \* \* \* \*

点 名	X	Y	(X-X0)*(YN-1-Y0)	(XN-1-X0)*(Y-Y0)
12-3-54	- 149629.391	- 39902.179	+ 3383.521311	+ 3028.892097
12-3-55	- 149643.332	- 39899.091	+ 4427.620428	+ 2912.383581
12-3-56	- 149654.870	- 39896.170	+ 5437.123170	+ 4167.238440
12-3-57	- 149665.768	- 39892.822	+ 6324.908560	+ 5093.143140
12-3-58	- 149680.822	- 39887.562	+ 7502.059684	+ 5758.777616
12-3-59	- 149703.379	- 39882.370	+ 9052.071998	+ 6657.308140
12-3-20	- 149712.815	- 39881.346	+ 9292.571550	+ 8409.468134
			+ 77497.464338	+ 82237.614653
		倍面積	= 4740.150315	
		面積	= 2370.075157	

8 LOT

点 名	X	Y	(X-X0)*(YN-1-Y0)	(XN-1-X0)*(Y-Y0)
X0·Y0	- 149600.000	- 39900.000		
12-3-37	- 149716.816	- 39914.301		
12-3-38	- 149717.609	- 39930.274	+ 1681.926309	+ 3536.487584
12-3-41	- 149698.700	- 39932.371	+ 2988.043800	+ 3807.120939
12-3-39	- 149700.459	- 39948.234	+ 3251.958289	+ 4760.695800
12-3-40	- 149696.478	- 39948.629	+ 4653.519852	+ 4885.220711
12-3-42	- 149694.721	- 39932.740	+ 4606.187509	+ 3158.689720
12-3-43	- 149682.567	- 39934.139	+ 2703.243580	+ 3233.680219
12-3-44	- 149681.039	- 39918.277	+ 2766.590421	+ 1509.077059
12-3-37	- 149716.816	- 39914.301	+ 2135.046032	+ 1158.938739
			+ 24786.515792	+ 26049.910771
		倍面積	= 1263.394979	
		面積	= 631.697489	

9 LOT

点 名	X	Y	(X-X0)*(YN-1-Y0)	(XN-1-X0)*(Y-Y0)
X0·Y0	- 149600.000	- 39900.000		
12-3-38	- 149717.609	- 39930.274		
12-3-22	- 149718.413	- 39946.453	+ 3584.835162	+ 5463.290877
12-3-39	- 149700.459	- 39948.234	+ 4666.621927	+ 5711.532642
12-3-41	- 149698.700	- 39932.371	+ 4760.695800	+ 3251.958289
12-3-38	- 149717.609	- 39930.274	+ 3807.120939	+ 2988.043800
			+ 16819.273828	+ 17414.825608
		倍面積	= 595.551780	
		面積	= 297.775890	

~~10 LOT~~

点 名	X	Y	(X-X0)*(YN-1-Y0)	(XN-1-X0)*(Y-Y0)
X0·Y0	- 149600.000	- 39900.000		
12-3-40	- 149696.478	- 39948.629		
12-3-23	- 149680.223	- 39950.242	+ 3901.164267	+ 4847.247676

\* \* \* \* \* 各 筆 面 積 計 算 書 \* \* \* \* \*

点 名	X	Y	(X-X0)*(YN-1-Y0)	(XN-1-X0)*(Y-Y0)
12-3-24	- 149629.509	- 39943.548	+ 1482.591178	+ 3493.551204
12-3-46	- 149627.362	- 39924.242	+ 1191.560376	+ 715.357178
12-3-44	- 149681.039	- 39918.277	+ 1964.547438	+ 500.095274
12-3-43	- 149682.567	- 39934.139	+ 1509.077059	+ 2766.590421
12-3-42	- 149694.721	- 39932.740	+ 3233.680219	+ 2703.243580
12-3-40	- 149696.478	- 39948.629	+ 3158.689720	+ 4606.187509
			+ 16441.310257	+ 19632.272842
		倍面積	= 3190.962585	
		面積	= 1595.481292	

11 LOT

点 名	X	Y	(X-X0)*(YN-1-Y0)	(XN-1-X0)*(Y-Y0)
X0·Y0	- 149600.000	- 39900.000		
12-3-24	- 149629.509	- 39943.548		
12-3-1	- 149614.178	- 39941.530	+ 617.423544	+ 1225.508770
12-3-2	- 149611.120	- 39938.179	+ 461.813600	+ 541.301862
12-3-25	- 149610.852	- 39926.077	+ 414.318508	+ 289.976240
12-3-46	- 149627.362	- 39924.242	+ 713.518874	+ 263.074184
12-3-24	- 149629.509	- 39943.548	+ 715.357178	+ 1191.560376
			+ 2922.431704	+ 3511.421432
		倍面積	= 588.989728	
		面積	= 294.494864	

12 LOT

点 名	X	Y	(X-X0)*(YN-1-Y0)	(XN-1-X0)*(Y-Y0)
X0·Y0	- 149600.000	- 39900.000		
12-3-25	- 149610.852	- 39926.077		
12-3-26	- 149610.623	- 39915.737	+ 277.015971	+ 170.777924
12-3-50	- 149623.664	- 39915.525	+ 372.400368	+ 164.922075
12-3-49	- 149623.658	- 39915.216	+ 367.290450	+ 360.071424
12-3-48	- 149629.643	- 39915.121	+ 451.047888	+ 357.732618
12-3-47	- 149637.987	- 39914.200	+ 574.401427	+ 420.930600
12-3-45	- 149638.960	- 39922.953	+ 553.232000	+ 871.915611
12-3-25	- 149610.852	- 39926.077	+ 249.085956	+ 1015.959920
			+ 2844.474060	+ 3362.310172
		倍面積	= 517.836112	
		面積	= 258.918056	

13 LOT

点 名	X	Y	(X-X0)*(YN-1-Y0)	(XN-1-X0)*(Y-Y0)
X0·Y0	- 149600.000	- 39900.000		
12-3-26	- 149610.623	- 39915.737		
12-3-27	- 149610.616	- 39915.428	+ 167.063992	+ 163.891644

\* \* \* \* \* 各 筆 面 積 計 算 書 \* \* \* \* \*

点 名	X	Y	(X-X0)*(YN-1-Y0)	(XN-1-X0)*(Y-Y0)
12-3-49	- 149623.658	- 39915.216	+ 364.995624	+ 161.533056
12-3-50	- 149623.664	- 39915.525	+ 360.071424	+ 367.290450
12-3-26	- 149610.623	- 39915.737	+ 164.922075	+ 372.400368
			+ 1057.053115	+ 1065.115518
		倍面積	= 8.062403	
		面積	= 4.031201	

14 LOT

点 名	X	Y	(X-X0)*(YN-1-Y0)	(XN-1-X0)*(Y-Y0)
X0·Y0	- 149600.000	- 39900.000		
12-3-27	- 149610.616	- 39915.428		
12-3-28	- 149610.374	- 39904.502	+ 160.050072	+ 47.793232
12-3-53	- 149623.393	- 39902.913	+ 105.315286	+ 30.219462
12-3-54	- 149629.391	- 39902.179	+ 85.615983	+ 50.973347
12-3-48	- 149629.643	- 39915.121	+ 64.592097	+ 444.421311
12-3-49	- 149623.658	- 39915.216	+ 357.732618	+ 451.047888
12-3-27	- 149610.616	- 39915.428	+ 161.533056	+ 364.995624
			+ 934.839112	+ 1389.450864
		倍面積	= 454.611752	
		面積	= 227.305876	

15 LOT

点 名	X	Y	(X-X0)*(YN-1-Y0)	(XN-1-X0)*(Y-Y0)
X0·Y0	- 149600.000	- 39800.000		
12-3-28	- 149610.374	- 39904.502		
12-3-29	- 149609.993	- 39887.282	+ 1044.288486	+ 905.463468
12-3-52	- 149623.245	- 39885.868	+ 2028.870090	+ 858.078924
12-3-53	- 149623.393	- 39902.913	+ 2008.710124	+ 2392.212685
12-3-28	- 149610.374	- 39904.502	+ 1067.619462	+ 2444.615286
			+ 6149.488162	+ 6600.370363
		倍面積	= 450.882201	
		面積	= 225.441100	

16 LOT

点 名	X	Y	(X-X0)*(YN-1-Y0)	(XN-1-X0)*(Y-Y0)
X0·Y0	- 149600.000	- 39800.000		
12-3-29	- 149609.993	- 39887.282		
12-3-30	- 149609.911	- 39883.593	+ 865.051902	+ 835.344849
12-3-51	- 149623.213	- 39882.160	+ 1940.444309	+ 814.287760
12-3-52	- 149623.245	- 39885.868	+ 1909.809200	+ 1993.253884
12-3-29	- 149609.993	- 39887.282	+ 858.078924	+ 2028.870090
			+ 5573.384336	+ 5671.756583
		倍面積	= 98.372248	
		面積	= 49.186124	



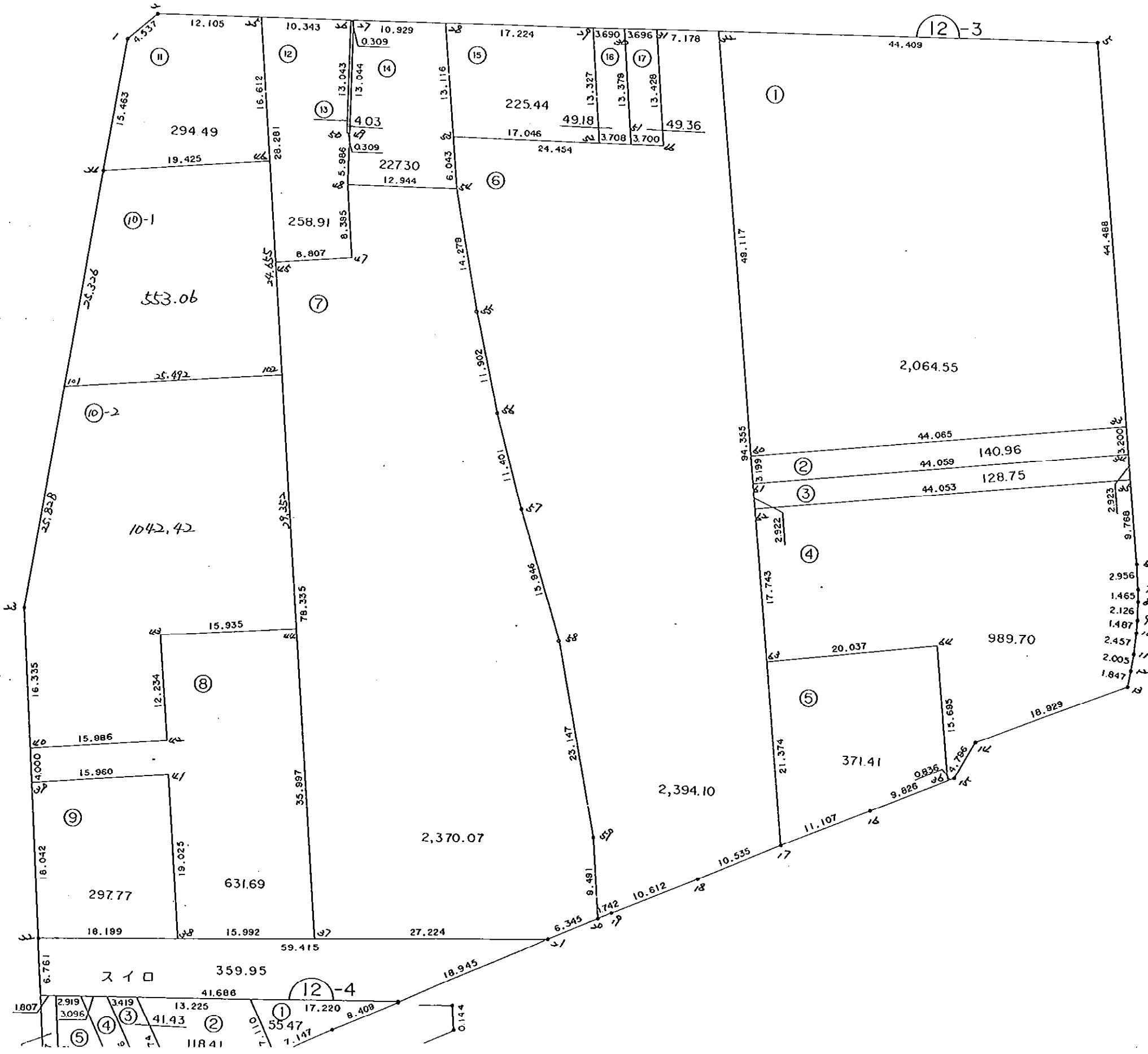
\* \* \* \* \* 各 筆 面 積 計 算 書 \* \* \* \* \*

17 LOT

点 名	X	Y	(X-X0)*(YN-1-Y0)	(XN-1-X0)*(Y-Y0)
X0·Y0	- 149600.000	- 39800.000		
12-3-30	- 149609.911	- 39883.593		
12-3-31	- 149609.830	- 39879.897	+ 821.719190	+ 791.859167
12-3-66	- 149623.181	- 39878.460	+ 1852.092357	+ 771.261800
12-3-51	- 149623.213	- 39882.160	+ 1821.291980	+ 1904.550960
12-3-30	- 149609.911	- 39883.593	+ 814.287760	+ 1940.444309
			+ 5309.391287	+ 5408.116236
		倍面積	= 98.724949	
		面積	= 49.362474	

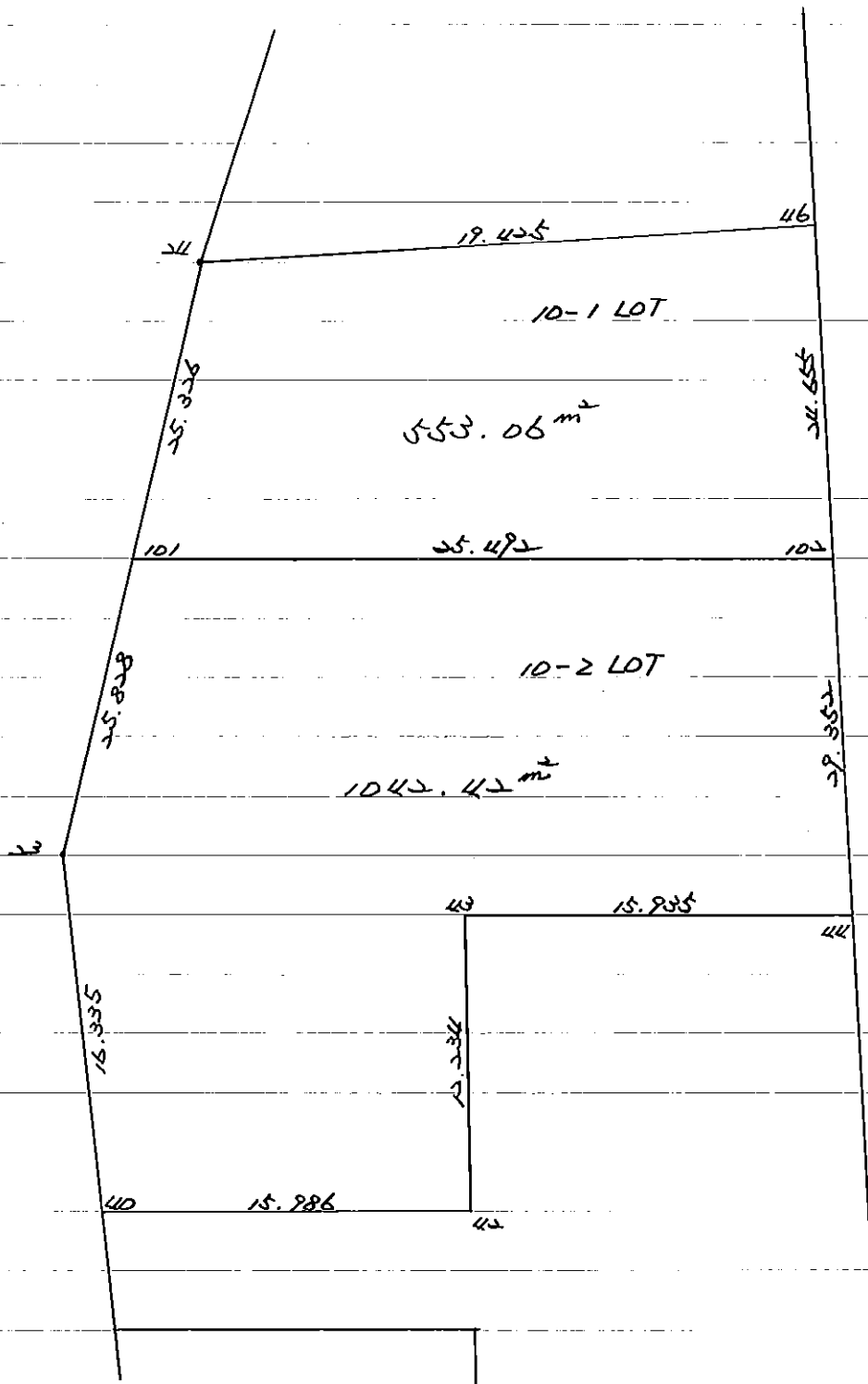
トウ口

点 名	X	Y	(X-X0)*(YN-1-Y0)	(XN-1-X0)*(Y-Y0)
X0·Y0	- 149600.000	- 39800.000		
12-1-26	- 149608.240	- 39942.394		
12-1-25	- 149605.918	- 39838.896	+ 842.687692	+ 320.503040
12-3-3	- 149606.918	- 39838.867	+ 269.082528	+ 230.014906
12-3-4	- 149606.726	- 39830.574	+ 261.419442	+ 211.510932
12-3-5	- 149608.688	- 39828.323	+ 265.626912	+ 190.500498
12-3-2	- 149611.120	- 39938.179	+ 314.951760	+ 1200.499152
12-3-1	- 149614.178	- 39941.530	+ 1959.101862	+ 1573.813600
12-1-26	- 149608.240	- 39942.394	+ 1166.207200	+ 2018.862132
			+ 5079.077396	+ 5745.704260
		倍面積	= 666.626864	
		面積	= 333.313432	



12-3 BL

45, 1, 11



\* \* \* \* \* 10-1 LOT 面積計算書 \* \* \* \* \* NO 1

点名	X	DX	DMD.1	Y	DY	DMD.2	DX * DMD.2	DY * DMD.1
12-3-101	- 149654.617			- 39946.862				
12-3-24	- 149629.509	- 25.108	- 25.108	- 39943.548	- 3.314	- 3.314	+ 83.207912	+ 83.207912
12-3-46	- 149627.362	- 2.147	- 52.363	- 39924.242	- 19.306	- 25.934	+ 55.680298	+ 1010.920078
12-3-102	- 149651.866	+ 24.504	- 30.006	- 39921.519	- 2.723	- 47.963	- 1175.285352	+ 81.706338
12-3-101	- 149654.617	+ 2.751	- 2.751	- 39946.862	+ 25.343	- 25.343	- 69.718593	- 69.718593
		+ 27.255			+ 25.343		+ 138.888210	+ 1175.834328
		- 27.255			- 25.343		- 1245.003945	- 69.718593
							- 1106.115735	+ 1106.115735

面積 = ~~553.057867~~  
553.06

\* \* \* \* \* 10-2 LOT

面積計算書

\* \* \* \* \* NO 1

点名	X	DX	DMD.1	Y	DY	DMD.2	DX * DMD.2	DY * DMD.1
12-3-40	- 149696.478			- 39948.629				
12-3-23	- 149680.223	- 16.255	- 16.255	- 39950.242	+ 1.613	+ 1.613	- 26.219315	- 26.219315
12-3-101	- 149654.617	- 25.606	- 58.116	- 39946.862	- 3.380	- 0.154	+ 3.943324	+ 196.432080
12-3-102	- 149651.866	- 2.751	- 86.473	- 39921.519	- 25.343	- 28.877	+ 79.440627	+ 2191.485239
12-3-44	- 149681.039	+ 29.173	- 60.051	- 39918.277	- 3.242	- 57.462	- 1676.338926	+ 194.685342
12-3-43	- 149682.567	+ 1.528	- 29.350	- 39934.139	+ 15.862	- 44.842	- 68.518576	- 465.549700
12-3-42	- 149694.721	+ 12.154	- 15.668	- 39932.740	- 1.399	- 30.379	- 369.226366	+ 21.919532
12-3-40	- 149696.478	+ 1.757	- 1.757	- 39948.629	+ 15.889	- 15.889	- 27.916973	- 27.916973
		+ 44.612			+ 33.364		+ 83.383951	+ 2604.522193
		- 44.612			- 33.364		- 2168.220156	- 519.685988
							- 2084.836205	+ 2084.836205
						面積 =	<del>1042.418102</del>	
							1042.42	