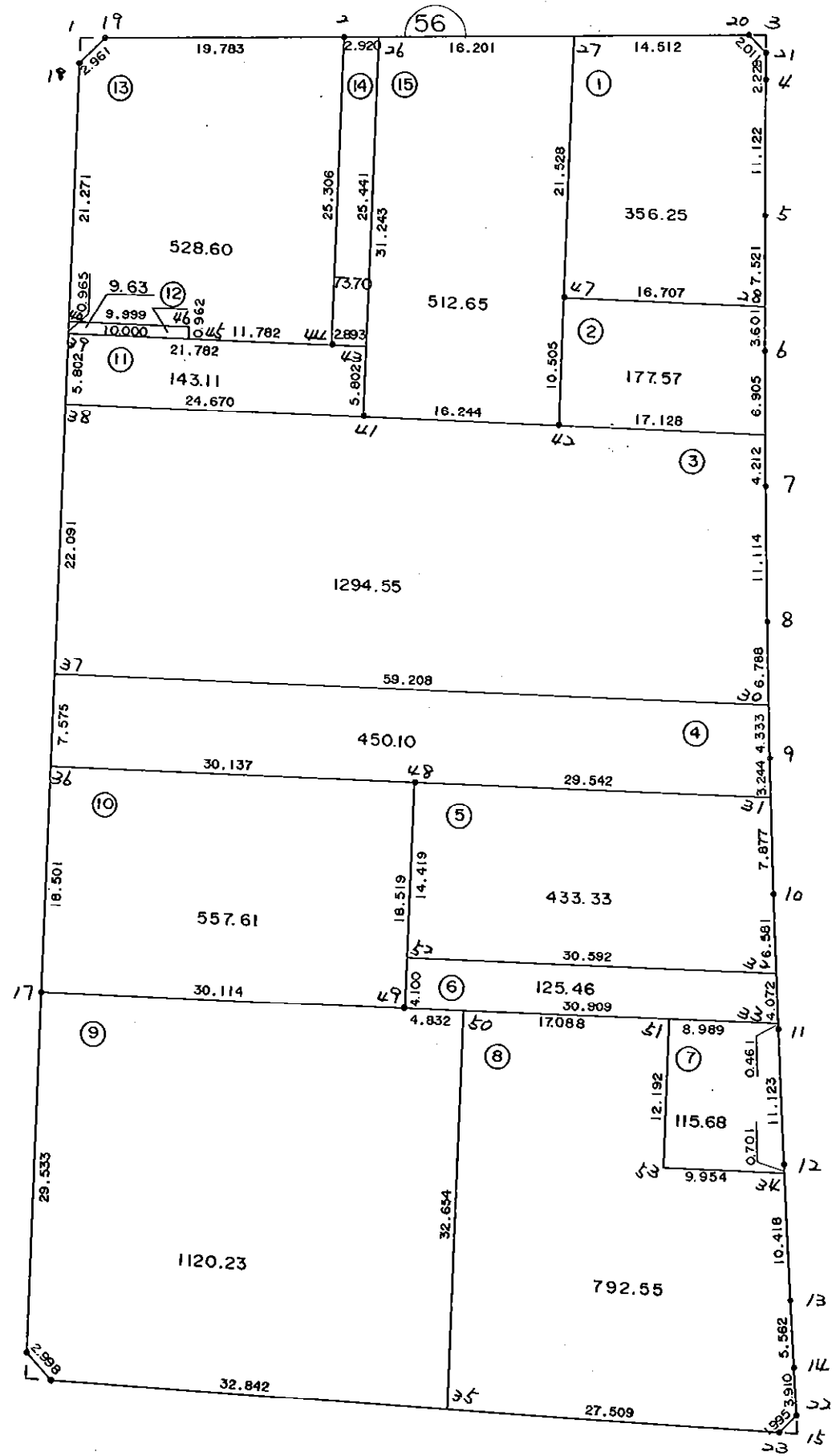


5 6 B L O C K



* * * 各筆面積 集計表 * * *

街区名・筆名	各筆面積	隅切面積
56 BLOCK	6691.11	
1 LOT	356.25	
2 LOT	177.57	
3 LOT	1294.55	
4 LOT	450.10	
5 LOT	433.33	
6 LOT	125.46	
7 LOT	115.68	
8 LOT	792.55	
9 LOT	1120.23	
10 LOT	557.61	
11 LOT	143.11	
12 LOT	9.63	
13 LOT	528.60	
14 LOT	73.70	
15 LOT	512.65	
1 スミキリ		2.09
3 スミキリ		1.02
15 スミキリ		1.12
16 スミキリ		2.17
合計 =	6691.02	6.40

* * * * * 各 筆 面 積 計 算 書 * * * * *

56 BLOCK

点 名	X	Y	(X-X0)*(YN-1-Y0)	(XN-1-X0)*(Y-Y0)
X0·Y0	- 150600.000	- 39200.000		
56-18	- 150677.665	- 39314.575		
56-19	- 150675.484	- 39312.572	+ 8648.579300	+ 8742.904380
56-2	- 150674.399	- 39292.819	+ 8375.244228	+ 7006.349396
56-20	- 150672.504	- 39259.240	+ 6729.748776	+ 4407.396760
56-21	- 150673.864	- 39257.758	+ 4375.703360	+ 4187.686032
56-4	- 150676.090	- 39257.661	+ 4394.806220	+ 4259.072104
56-5	- 150687.202	- 39257.196	+ 5028.154522	+ 4352.043640
56-6	- 150698.311	- 39256.661	+ 5622.995956	+ 4940.952522
56-7	- 150709.412	- 39256.068	+ 6199.393332	+ 5512.101148
56-8	- 150720.505	- 39255.390	+ 6756.474340	+ 6060.330680
56-9	- 150731.601	- 39254.646	+ 7289.379390	+ 6585.116230
56-10	- 150742.690	- 39253.803	+ 7797.437740	+ 7080.528603
56-11	- 150753.764	- 39252.858	+ 8272.964492	+ 7542.308020
56-12	- 150764.843	- 39251.872	+ 8713.271294	+ 7976.046208
56-13	- 150775.912	- 39250.820	+ 9124.907264	+ 8377.321260
56-14	- 150781.446	- 39250.264	+ 9221.085720	+ 8842.040768
56-22	- 150785.335	- 39249.859	+ 9315.678440	+ 9046.716114
56-23	- 150786.807	- 39251.206	+ 9314.010213	+ 9490.264010
56-24	- 150785.538	- 39311.543	+ 9500.658828	+ 20837.013201
56-25	- 150783.399	- 39313.643	+ 20456.874657	+ 21085.094934
56-17	- 150753.867	- 39313.917	+ 17485.907481	+ 20892.263883
56-18	- 150677.665	- 39314.575	+ 8847.363805	+ 17629.311525
			+181470.639358	+194852.861418
		倍面積	= 13382.222060	
		面積	= 6691.111030	

1 LOT

点 名	X	Y	(X-X0)*(YN-1-Y0)	(XN-1-X0)*(Y-Y0)
X0·Y0	- 150600.000	- 39200.000		
56-27	- 150673.322	- 39273.729		
56-20	- 150672.504	- 39259.240	+ 5345.647416	+ 4343.595280
56-21	- 150673.864	- 39257.758	+ 4375.703360	+ 4187.686032
56-4	- 150676.090	- 39257.661	+ 4394.806220	+ 4259.072104
56-5	- 150687.202	- 39257.196	+ 5028.154522	+ 4352.043640
56-28	- 150694.714	- 39256.834	+ 5417.261944	+ 4956.038468
56-47	- 150694.849	- 39273.540	+ 5390.648066	+ 6965.267560
56-27	- 150673.322	- 39273.729	+ 5392.099880	+ 6993.121921
			+ 35344.321408	+ 36056.825005
		倍面積	= 712.503597	
		面積	= 356.251798	

* * * * * 各 筆 面 積 計 算 書 * * * * *

2 LOT

点 名	X	Y	(X-X0)*(YN-1-Y0)	(XN-1-X0)*(Y-Y0)
X0·Y0	- 150600.000	- 39200.000		
56-28	- 150694.714	- 39256.834		
56-6	- 150698.311	- 39256.661	+ 5587.407374	+ 5366.589954
56-29	- 150705.206	- 39256.293	+ 5961.077166	+ 5534.221123
56-42	- 150705.353	- 39273.420	+ 5930.636429	+ 7724.224520
56-47	- 150694.849	- 39273.540	+ 6963.813580	+ 7747.659620
56-28	- 150694.714	- 39256.834	+ 6965.267560	+ 5390.648066
			+ 31408.202109	+ 31763.343283
		倍面積	= 355.141174	
		面積	= 177.570587	

3 LOT

点 名	X	Y	(X-X0)*(YN-1-Y0)	(XN-1-X0)*(Y-Y0)
X0·Y0	- 150700.000	- 39200.000		
56-29	- 150705.206	- 39256.293		
56-7	- 150709.412	- 39256.068	+ 529.829716	+ 291.890008
56-8	- 150720.505	- 39255.390	+ 1149.674340	+ 521.330680
56-30	- 150727.278	- 39254.936	+ 1510.928420	+ 1126.462680
56-37	- 150727.792	- 39314.142	+ 1526.781312	+ 3113.565476
56-38	- 150705.702	- 39314.333	+ 650.837684	+ 3177.542736
56-41	- 150705.476	- 39289.664	+ 626.087508	+ 511.264128
56-42	- 150705.353	- 39273.420	+ 479.971392	+ 402.047920
56-29	- 150705.206	- 39256.293	+ 382.224520	+ 301.336429
			+ 6856.334892	+ 9445.440057
		倍面積	= 2589.105165	
		面積	= 1294.552582	

4 LOT

点 名	X	Y	(X-X0)*(YN-1-Y0)	(XN-1-X0)*(Y-Y0)
X0·Y0	- 150700.000	- 39200.000		
56-30	- 150727.278	- 39254.936		
56-9	- 150731.601	- 39254.646	+ 1736.032536	+ 1490.633588
56-31	- 150734.836	- 39254.400	+ 1903.648056	+ 1719.094400
56-48	- 150735.107	- 39283.941	+ 1909.820800	+ 2924.168676
56-36	- 150735.367	- 39314.077	+ 2968.741347	+ 4004.901239
56-37	- 150727.792	- 39314.142	+ 3170.427984	+ 4036.860114
56-30	- 150727.278	- 39254.936	+ 3113.565476	+ 1526.781312
			+ 14802.236199	+ 15702.439329
		倍面積	= 900.203130	
		面積	= 450.101565	

* * * * * 各 筆 面 積 計 算 書 * * * * *

5 LOT

点 名	X	Y	(X-X0)*(YN-1-Y0)	(XN-1-X0)*(Y-Y0)
X0·Y0	- 150700.000	- 39200.000		
56-31	- 150734.836	- 39254.400		
56-10	- 150742.690	- 39253.803	+ 2322.336000	+ 1874.281308
56-32	- 150749.248	- 39253.243	+ 2649.690144	+ 2272.943670
56-52	- 150749.525	- 39283.834	+ 2636.859575	+ 4128.656832
56-48	- 150735.107	- 39283.941	+ 2943.160238	+ 4157.178025
56-31	- 150734.836	- 39254.400	+ 2924.168676	+ 1909.820800
			+ 13476.214633	+ 14342.880635
		倍面積	= 866.666002	
		面積	= 433.333001	

6 LOT

点 名	X	Y	(X-X0)*(YN-1-Y0)	(XN-1-X0)*(Y-Y0)
X0·Y0	- 150700.000	- 39200.000		
56-32	- 150749.248	- 39253.243		
56-33	- 150753.305	- 39252.897	+ 2838.118115	+ 2605.071456
56-49	- 150753.625	- 39283.804	+ 2836.601625	+ 4467.172220
56-52	- 150749.525	- 39283.834	+ 4150.393100	+ 4495.598250
56-32	- 150749.248	- 39253.243	+ 4128.656832	+ 2636.859575
			+ 13953.769672	+ 14204.701501
		倍面積	= 250.931829	
		面積	= 125.465914	

7 LOT

点 名	X	Y	(X-X0)*(YN-1-Y0)	(XN-1-X0)*(Y-Y0)
X0·Y0	- 150700.000	- 39200.000		
56-33	- 150753.305	- 39252.897		
56-11	- 150753.764	- 39252.858	+ 2843.954308	+ 2817.595690
56-12	- 150764.843	- 39251.872	+ 3427.471294	+ 2788.846208
56-34	- 150765.541	- 39251.806	+ 3399.742752	+ 3359.256458
56-53	- 150765.589	- 39261.760	+ 3397.903734	+ 4047.812160
56-51	- 150753.398	- 39261.886	+ 3297.860480	+ 4059.040854
56-33	- 150753.305	- 39252.897	+ 3298.833230	+ 2824.594006
			+ 19665.765798	+ 19897.145376
		倍面積	= 231.379578	
		面積	= 115.689789	

8 LOT

点 名	X	Y	(X-X0)*(YN-1-Y0)	(XN-1-X0)*(Y-Y0)
X0·Y0	- 150700.000	- 39200.000		
56-34	- 150765.541	- 39251.806		
56-13	- 150775.912	- 39250.820	+ 3932.697072	+ 3330.793620

* * * * * 各 筆 面 積 計 算 書 * * * * *

点 名	X	Y	(X-X0)*(YN-1-Y0)	(XN-1-X0)*(Y-Y0)
56-14	- 150781.446	- 39250.264	+ 4139.085720	+ 3815.640768
56-22	- 150785.335	- 39249.859	+ 4289.278440	+ 4060.816114
56-23	- 150786.807	- 39251.206	+ 4328.110213	+ 4369.664010
56-35	- 150786.228	- 39278.709	+ 4415.390968	+ 6832.492163
56-50	- 150753.575	- 39278.972	+ 4216.834675	+ 6809.597616
56-51	- 150753.398	- 39261.886	+ 4216.946856	+ 3315.542450
56-53	- 150765.589	- 39261.760	+ 4059.040854	+ 3297.860480
56-34	- 150765.541	- 39251.806	+ 4047.812160	+ 3397.903734
			+ 37645.196958	+ 39230.310955
		倍面積	= 1585.113997	
		面積	= 792.556998	

9 LOT

点 名	X	Y	(X-X0)*(YN-1-Y0)	(XN-1-X0)*(Y-Y0)
X0-Y0	- 150700.000	- 39200.000		
56-35	- 150786.228	- 39278.709		
56-24	- 150785.538	- 39311.543	+ 6732.610442	+ 9618.129804
56-25	- 150783.399	- 39313.643	+ 9302.574657	+ 9720.794934
56-17	- 150753.867	- 39313.917	+ 6121.607481	+ 9500.563883
56-49	- 150753.625	- 39283.804	+ 6108.799125	+ 4514.270068
56-50	- 150753.575	- 39278.972	+ 4489.799300	+ 4234.873500
56-35	- 150786.228	- 39278.709	+ 6809.597616	+ 4216.834675
			+ 39564.988621	+ 41805.466864
		倍面積	= 2240.478243	
		面積	= 1120.239121	

10 LOT

点 名	X	Y	(X-X0)*(YN-1-Y0)	(XN-1-X0)*(Y-Y0)
X0-Y0	- 150700.000	- 39200.000		
56-17	- 150753.867	- 39313.917		
56-36	- 150735.367	- 39314.077	+ 4028.902539	+ 6144.985759
56-48	- 150735.107	- 39283.941	+ 4004.901239	+ 2968.741347
56-49	- 150753.625	- 39283.804	+ 4501.336125	+ 2942.107028
56-17	- 150753.867	- 39313.917	+ 4514.270068	+ 6108.799125
			+ 17049.409971	+ 18164.633259
		倍面積	= 1115.223288	
		面積	= 557.611644	

11 LOT

点 名	X	Y	(X-X0)*(YN-1-Y0)	(XN-1-X0)*(Y-Y0)
X0-Y0	- 150600.000	- 39200.000		
56-38	- 150705.702	- 39314.333		
56-39	- 150699.900	- 39314.383	+ 11421.866700	+ 12090.511866

* * * * * 各 筆 面 積 計 算 書 * * * * *

点 名	X	Y	(X-X0)*(YN-1-Y0)	(XN-1-X0)*(Y-Y0)
56-44	- 150699.704	- 39292.602	+ 11404.442632	+ 9250.939800
56-43	- 150699.674	- 39289.709	+ 9230.011748	+ 8944.346136
56-41	- 150705.476	- 39289.664	+ 9462.146484	+ 8937.169536
56-38	- 150705.702	- 39314.333	+ 9477.664128	+ 12059.387508
			+ 50996.131692	+ 51282.354846
		倍面積	= 286.223154	
		面積	= 143.111577	

12 LOT

点 名	X	Y	(X-X0)*(YN-1-Y0)	(XN-1-X0)*(Y-Y0)
X0-Y0	- 150600.000	- 39300.000		
56-39	- 150699.900	- 39314.383		
56-40	- 150698.935	- 39314.391	+ 1422.982105	+ 1437.660900
56-46	- 150698.848	- 39304.392	+ 1422.521568	+ 434.522520
56-45	- 150699.810	- 39304.383	+ 438.365520	+ 433.250784
56-39	- 150699.900	- 39314.383	+ 437.861700	+ 1435.567230
			+ 3721.730893	+ 3741.001434
		倍面積	= 19.270541	
		面積	= 9.635270	

13 LOT

点 名	X	Y	(X-X0)*(YN-1-Y0)	(XN-1-X0)*(Y-Y0)
X0-Y0	- 150600.000	- 39200.000		
56-40	- 150698.935	- 39314.391		
56-18	- 150677.665	- 39314.575	+ 8884.177015	+ 11335.477625
56-19	- 150675.484	- 39312.572	+ 8648.579300	+ 8742.904380
56-2	- 150674.399	- 39292.819	+ 8375.244228	+ 7006.349396
56-44	- 150699.704	- 39292.602	+ 9254.425576	+ 6889.496198
56-45	- 150699.810	- 39304.383	+ 9242.605620	+ 10407.402632
56-46	- 150698.848	- 39304.392	+ 10318.050784	+ 10419.365520
56-40	- 150698.935	- 39314.391	+ 10328.022520	+ 11307.321568
			+ 65051.105043	+ 66108.317319
		倍面積	= 1057.212276	
		面積	= 528.606138	

14 LOT

点 名	X	Y	(X-X0)*(YN-1-Y0)	(XN-1-X0)*(Y-Y0)
X0-Y0	- 150600.000	- 39200.000		
56-2	- 150674.399	- 39292.819		
56-26	- 150674.234	- 39289.904	+ 6890.325646	+ 6688.767696
56-43	- 150699.674	- 39289.709	+ 8961.091296	+ 6659.457906
56-44	- 150699.704	- 39292.602	+ 8944.346136	+ 9230.011748

* * * * * 各 筆 面 積 計 算 書 * * * * *

点 名	X	Y	(X-X0)*(YN-1-Y0)	(XN-1-X0)*(Y-Y0)
56-2	- 150674.399	- 39292.819	+ 6889.496198	+ 9254.425576
			+ 31685.259276	+ 31832.662926
		倍面積	= 147.403650	
		面積	= 73.701825	

15 LOT

点 名	X	Y	(X-X0)*(YN-1-Y0)	(XN-1-X0)*(Y-Y0)
X0-Y0	- 150600.000	- 39200.000		
56-26	- 150674.234	- 39289.904		
56-27	- 150673.322	- 39273.729	+ 6591.941088	+ 5473.198586
56-47	- 150694.849	- 39273.540	+ 6993.121921	+ 5392.099880
56-42	- 150705.353	- 39273.420	+ 7747.659620	+ 6963.813580
56-41	- 150705.476	- 39289.664	+ 7744.047920	+ 9446.371392
56-26	- 150674.234	- 39289.904	+ 6656.117376	+ 9482.714304
			+ 35732.887925	+ 36758.197742
		倍面積	= 1025.309817	
		面積	= 512.654908	

1 区切り

点 名	X	Y	(X-X0)*(YN-1-Y0)	(XN-1-X0)*(Y-Y0)
X0-Y0	- 150600.000	- 39300.000		
56-1	- 150675.595	- 39314.593		
56-18	- 150677.665	- 39314.575	+ 1133.365345	+ 1101.797125
56-19	- 150675.484	- 39312.572	+ 1100.179300	+ 976.404380
56-1	- 150675.595	- 39314.593	+ 950.380340	+ 1101.538012
			+ 3183.924985	+ 3179.739517
		倍面積	= 4.185468	
		面積	= 2.092734	

3 区切り

点 名	X	Y	(X-X0)*(YN-1-Y0)	(XN-1-X0)*(Y-Y0)
X0-Y0	- 150600.000	- 39200.000		
56-3	- 150672.424	- 39257.820		
56-20	- 150672.504	- 39259.240	+ 4192.181280	+ 4290.397760
56-21	- 150673.864	- 39257.758	+ 4375.703360	+ 4187.686032
56-3	- 150672.424	- 39257.820	+ 4183.065392	+ 4270.816480
			+ 12750.950032	+ 12748.900272
		倍面積	= 2.049760	
		面積	= 1.024880	

* * * * * 各 筆 面 積 計 算 書 * * * * *

15 区判

点 名	X	Y	(X-X0)*(YN-1-Y0)	(XN-1-X0)*(Y-Y0)
X0-Y0	- 150700.000	- 39200.000		
56-15	- 150786.839	- 39249.703		
56-22	- 150785.335	- 39249.859	+ 4241.405505	+ 4329.705701
56-23	- 150786.807	- 39251.206	+ 4328.110213	+ 4369.664010
56-15	- 150786.839	- 39249.703	+ 4446.677834	+ 4314.568321
			+ 13016.193552	+ 13013.938032
		倍面積	= 2.255520	
		面積	= 1.127760	

16 区判

点 名	X	Y	(X-X0)*(YN-1-Y0)	(XN-1-X0)*(Y-Y0)
X0-Y0	- 150700.000	- 39300.000		
56-16	- 150785.494	- 39313.624		
56-24	- 150785.538	- 39311.543	+ 1165.369712	+ 986.857242
56-25	- 150783.399	- 39313.643	+ 962.674657	+ 1166.994934
56-16	- 150785.494	- 39313.624	+ 1166.394642	+ 1136.227976
			+ 3294.439011	+ 3290.080152
		倍面積	= 4.358859	
		面積	= 2.179429	