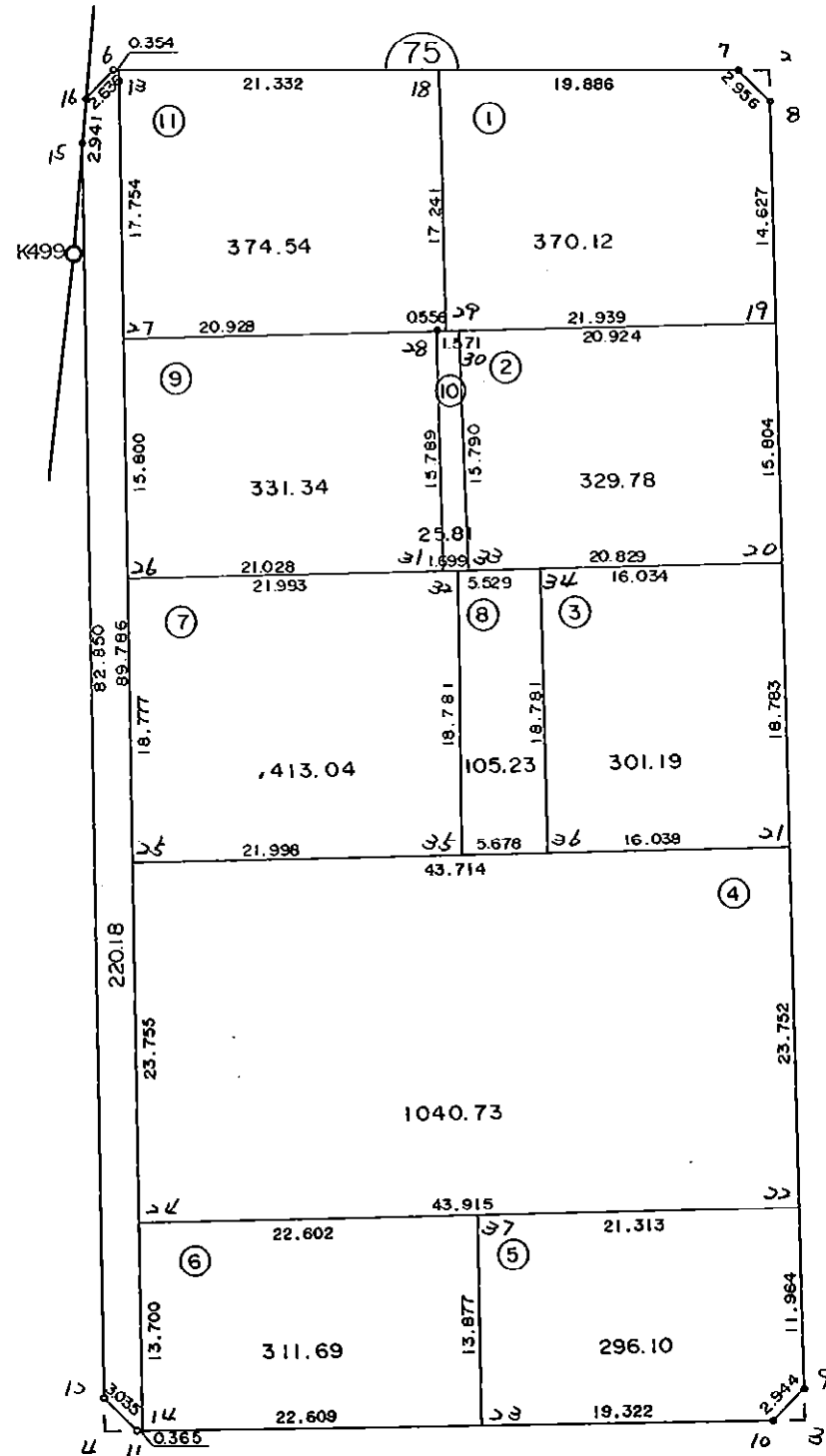


7 5 B L O C K

]



* * * 各筆面積 集計表 * * *

街区名・筆名	各筆面積	隅切面積
75 BLOCK	4119.79	
1 LOT	370.12	
2 LOT	329.78	
3 LOT	301.19	
4 LOT	1040.73	
5 LOT	296.10	
6 LOT	311.69	
7 LOT	413.04	
8 LOT	105.23	
9 LOT	331.34	
10 LOT	25.81	
11 LOT	374.54	
スロ	220.18	
1 スロ		2.13
2 スロ		2.18
3 スロ		2.30
合計 =	4119.75	6.61

* * * * * 各 筆 面 積 計 算 書 * * * * *

75 BLOCK

点 名	X	Y	(X-X0)*(YN-1-Y0)	(XN-1-X0)*(Y-Y0)
X0·Y0	- 150800.000	- 39500.000		
75-15	- 150902.775	- 39582.694		
75-16	- 150899.841	- 39582.497	+ 8256.251654	+ 8478.629175
75-6	- 150897.915	- 39580.697	+ 8077.693755	+ 8056.869177
75-7	- 150897.239	- 39539.131	+ 7846.895583	+ 3831.511865
75-8	- 150899.264	- 39536.977	+ 3884.299584	+ 3595.606503
75-9	- 150984.123	- 39533.482	+ 6808.316171	+ 3323.557248
75-10	- 150986.269	- 39535.497	+ 6236.658658	+ 6535.814131
75-11	- 150987.659	- 39577.770	+ 6661.331523	+ 14486.140130
75-12	- 150985.580	- 39579.981	+ 14432.556600	+ 15009.154479
75-15	- 150902.775	- 39582.694	+ 8220.047275	+ 15346.352520
			+ 70424.050803	+ 78663.635228
		倍面積	= 8239.584425	
		面積	= 4119.792212	

1 LOT

点 名	X	Y	(X-X0)*(YN-1-Y0)	(XN-1-X0)*(Y-Y0)
X0·Y0	- 150800.000	- 39500.000		
75-18	- 150897.562	- 39559.014		
75-7	- 150897.239	- 39539.131	+ 5738.462346	+ 3817.698622
75-8	- 150899.264	- 39536.977	+ 3884.299584	+ 3595.606503
75-19	- 150913.879	- 39536.375	+ 4210.903783	+ 3610.728000
75-29	- 150914.788	- 39558.295	+ 4175.413500	+ 6638.576305
75-18	- 150897.562	- 39559.014	+ 5687.376790	+ 6774.099032
			+ 23696.456003	+ 24436.708462
		倍面積	= 740.252459	
		面積	= 370.126229	

2 LOT

点 名	X	Y	(X-X0)*(YN-1-Y0)	(XN-1-X0)*(Y-Y0)
X0·Y0	- 150900.000	- 39500.000		
75-19	- 150913.879	- 39536.375		
75-20	- 150929.670	- 39535.725	+ 1079.246250	+ 495.827275
75-33	- 150930.518	- 39556.537	+ 1090.255550	+ 1677.452790
75-30	- 150914.746	- 39557.281	+ 833.694602	+ 1748.101558
75-19	- 150913.879	- 39536.375	+ 795.002999	+ 536.385750
			+ 3798.199401	+ 4457.767373
		倍面積	= 659.567972	
		面積	= 329.783986	

* * * * * 各 筆 面 積 計 算 書 * * * * *

3 LOT

点 名	X	Y	(X-X0)*(YN-1-Y0)	(XN-1-X0)*(Y-Y0)
X0-Y0	- 150900.000	- 39500.000		
75-20	- 150929.670	- 39535.725		
75-21	- 150948.437	- 39534.952	+ 1730.411825	+ 1037.025840
75-36	- 150949.088	- 39550.977	+ 1715.723776	+ 2469.172949
75-34	- 150930.323	- 39551.746	+ 1545.775571	+ 2540.107648
75-20	- 150929.670	- 39535.725	+ 1535.303820	+ 1083.289175
			+ 6527.214992	+ 7129.595612
		倍面積	= 602.380620	
		面積	= 301.190310	

4 LOT

点 名	X	Y	(X-X0)*(YN-1-Y0)	(XN-1-X0)*(Y-Y0)
X0-Y0	- 150900.000	- 39500.000		
75-21	- 150948.437	- 39534.952		
75-22	- 150972.169	- 39533.974	+ 2522.450888	+ 1645.598638
75-24	- 150973.954	- 39577.853	+ 2512.513196	+ 5618.573157
75-25	- 150950.212	- 39578.630	+ 3909.154836	+ 5815.003020
75-21	- 150948.437	- 39534.952	+ 3808.601310	+ 1755.009824
			+ 12752.720230	+ 14834.184639
		倍面積	= 2081.464409	
		面積	= 1040.732204	

5 LOT

点 名	X	Y	(X-X0)*(YN-1-Y0)	(XN-1-X0)*(Y-Y0)
X0-Y0	- 150900.000	- 39500.000		
75-22	- 150972.169	- 39533.974		
75-9	- 150984.123	- 39533.482	+ 2857.994802	+ 2416.362458
75-10	- 150986.269	- 39535.497	+ 2888.458658	+ 2986.114131
75-23	- 150986.904	- 39554.809	+ 3084.831288	+ 4728.317621
75-37	- 150973.035	- 39555.269	+ 4002.975315	+ 4803.097176
75-22	- 150972.169	- 39533.974	+ 3988.708461	+ 2481.291090
			+ 16822.968524	+ 17415.182476
		倍面積	= 592.213952	
		面積	= 296.106976	

6 LOT

点 名	X	Y	(X-X0)*(YN-1-Y0)	(XN-1-X0)*(Y-Y0)
X0-Y0	- 150900.000	- 39500.000		
75-23	- 150986.904	- 39554.809		
75-14	- 150987.647	- 39577.405	+ 4803.844423	+ 6726.804120

* * * * * 各 筆 面 積 計 算 書 * * * * *

点 名	X	Y	(X-X0)*(Yn-1-Y0)	(Xn-1-X0)*(Y-Y0)
75-24	- 150973.954	- 39577.853	+ 5724.409370	+ 6823.581891
75-37	- 150973.035	- 39555.269	+ 5685.993855	+ 4087.363626
75-23	- 150986.904	- 39554.809	+ 4803.097176	+ 4002.975315
			+ 21017.344824	+ 21640.724952
		倍面積	= 623.380128	
		面積	= 311.690064	

7 LOT

点 名	X	Y	(X-X0)*(Yn-1-Y0)	(Xn-1-X0)*(Y-Y0)
X0·Y0	- 150900.000	- 39500.000		
75-25	- 150950.212	- 39578.630		
75-26	- 150931.445	- 39579.245	+ 2472.520350	+ 3979.049940
75-32	- 150930.548	- 39557.270	+ 2420.776260	+ 1800.855150
75-35	- 150949.319	- 39556.650	+ 2824.499130	+ 1730.544200
75-25	- 150950.212	- 39578.630	+ 2844.509800	+ 3877.952970
			+ 10562.305540	+ 11388.402260
		倍面積	= 826.096720	
		面積	= 413.048360	

8 LOT

点 名	X	Y	(X-X0)*(Yn-1-Y0)	(Xn-1-X0)*(Y-Y0)
X0·Y0	- 150900.000	- 39500.000		
75-32	- 150930.548	- 39557.270		
75-34	- 150930.323	- 39551.746	+ 1736.598210	+ 1580.736808
75-36	- 150949.088	- 39550.977	+ 2540.107648	+ 1545.775571
75-35	- 150949.319	- 39556.650	+ 2514.134663	+ 2780.835200
75-32	- 150930.548	- 39557.270	+ 1730.544200	+ 2824.499130
			+ 8521.384721	+ 8731.846709
		倍面積	= 210.461988	
		面積	= 105.230994	

9 LOT

点 名	X	Y	(X-X0)*(Yn-1-Y0)	(Xn-1-X0)*(Y-Y0)
X0·Y0	- 150900.000	- 39500.000		
75-26	- 150931.445	- 39579.245		
75-27	- 150915.653	- 39579.762	+ 1240.421985	+ 2508.116090
75-28	- 150914.811	- 39558.851	+ 1181.354982	+ 921.194703
75-31	- 150930.588	- 39558.234	+ 1800.134388	+ 862.503774
75-26	- 150931.445	- 39579.245	+ 1831.168130	+ 2423.946060
			+ 6053.079485	+ 6715.760627
		倍面積	= 662.681142	
		面積	= 331.340571	

* * * * * 各 筆 面 積 計 算 書 * * * * *

10 LOT

点 名	X	Y	(X-X0)*(YN-1-Y0)	(XN-1-X0)*(Y-Y0)
X0-Y0	- 150900.000	- 39500.000		
75-28	- 150914.811	- 39558.851		
75-30	- 150914.746	- 39557.281	+ 867.816846	+ 848.388891
75-33	- 150930.518	- 39556.537	+ 1748.101558	+ 833.694602
75-31	- 150930.588	- 39558.234	+ 1729.353756	+ 1777.185212
75-28	- 150914.811	- 39558.851	+ 862.503774	+ 1800.134388
			+ 5207.775934	+ 5259.403093
		倍面積	= 51.627159	
		面積	= 25.813579	

11 LOT

点 名	X	Y	(X-X0)*(YN-1-Y0)	(XN-1-X0)*(Y-Y0)
X0-Y0	- 150800.000	- 39500.000		
75-27	- 150915.653	- 39579.762		
75-13	- 150897.909	- 39580.343	+ 7809.417658	+ 9291.908979
75-18	- 150897.562	- 39559.014	+ 7838.423766	+ 5778.001726
75-29	- 150914.788	- 39558.295	+ 6774.099032	+ 5687.376790
75-28	- 150914.811	- 39558.851	+ 6692.907245	+ 6755.388588
75-27	- 150915.653	- 39579.762	+ 6806.294703	+ 9157.554982
			+ 35921.142404	+ 36670.231065
		倍面積	= 749.088661	
		面積	= 374.544330	

140

点 名	X	Y	(X-X0)*(YN-1-Y0)	(XN-1-X0)*(Y-Y0)
X0-Y0	- 150800.000	- 39500.000		
75-15	- 150902.775	- 39582.694		
75-16	- 150899.841	- 39582.497	+ 8256.251654	+ 8478.629175
75-6	- 150897.915	- 39580.697	+ 8077.693755	+ 8056.869177
75-13	- 150897.909	- 39580.343	+ 7900.962573	+ 7866.784845
75-14	- 150987.647	- 39577.405	+ 15076.122921	+ 7578.646145
75-11	- 150987.659	- 39577.770	+ 14525.744895	+ 14593.307190
75-12	- 150985.580	- 39579.981	+ 14432.556600	+ 15009.154479
75-15	- 150902.775	- 39582.694	+ 8220.047275	+ 15346.352520
			+ 76489.379673	+ 76929.743531
		倍面積	= 440.363858	
		面積	= 220.181929	

1 2347

点 名	X	Y	(X-X0)*(YN-1-Y0)	(XN-1-X0)*(Y-Y0)
X0-Y0	- 150800.000	- 39500.000		
75-2	- 150897.205	- 39537.062		
75-7	- 150897.239	- 39539.131	+ 3603.871818	+ 3803.728855

* * * * * 各 筆 面 積 計 算 書 * * * * *

点 名	X	Y	(X-X0)*(YN-1-Y0)	(XN-1-X0)*(Y-Y0)
75-8	- 150899.264	- 39536.977	+ 3884.299584	+ 3595.606503
75-2	- 150897.205	- 39537.062	+ 3594.349285	+ 3678.922368
			+ 11082.520687	+ 11078.257726
		倍面積	= 4.262961	
		面積	= 2.131480	

2 筆目

点 名	X	Y	(X-X0)*(YN-1-Y0)	(XN-1-X0)*(Y-Y0)
X0-Y0	- 150900.000	- 39500.000		
75-3	- 150986.200	- 39533.396		
75-9	- 150984.123	- 39533.482	+ 2809.371708	+ 2886.148400
75-10	- 150986.269	- 39535.497	+ 2888.458658	+ 2986.114131
75-3	- 150986.200	- 39533.396	+ 3059.841400	+ 2881.039524
			+ 8757.671766	+ 8753.302055
		倍面積	= 4.369711	
		面積	= 2.184855	

3 筆目

点 名	X	Y	(X-X0)*(YN-1-Y0)	(XN-1-X0)*(Y-Y0)
X0-Y0	- 150900.000	- 39500.000		
75-4	- 150987.729	- 39579.911		
75-11	- 150987.659	- 39577.770	+ 7004.918349	+ 6822.684330
75-12	- 150985.580	- 39579.981	+ 6655.556600	+ 7011.054479
75-4	- 150987.729	- 39579.911	+ 7016.653149	+ 6838.783380
			+ 20677.128098	+ 20672.522189
		倍面積	= 4.605909	
		面積	= 2.302954	