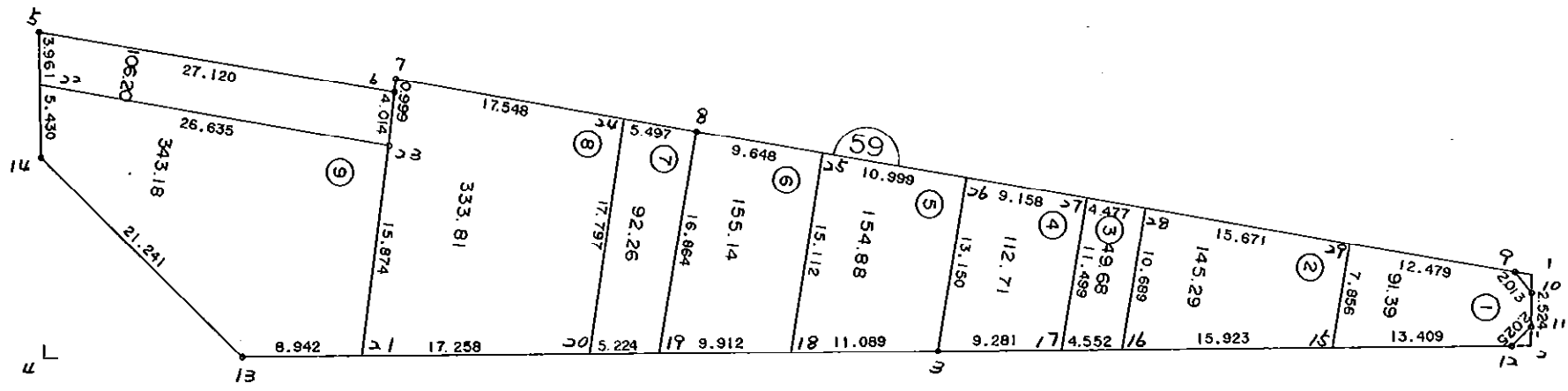


5 9 B L O C K



* * * 各筆面積 集計表 * * *

街区名・筆名	各筆面積	隅切面積
59 BLOCK	1584.58	
1 LOT	91.39	
2 LOT	145.29	
3 LOT	49.68	
4 LOT	112.71	
5 LOT	154.88	
6 LOT	155.14	
7 LOT	92.26	
8 LOT	333.81	
9 LOT	343.18	
リョウ子	106.20	
1 スミキリ		0.86
2 スミキリ		1.00
4 スミキリ		112.13
合計 =	1584.54	113.99

* * * * * 各 筆 面 積 計 算 書 * * * * *

59 BLOCK

点 名	X	Y	(X-X0)*(YN-1-Y0)	(XN-1-X0)*(Y-Y0)
X0·Y0	- 150800.000	- 39200.000		
59-9	- 150898.573	- 39243.732		
59-10	- 150897.171	- 39242.287	+ 4249.482172	+ 4168.356451
59-11	- 150896.971	- 39239.772	+ 4100.612677	+ 3864.685012
59-12	- 150898.277	- 39238.224	+ 3908.672844	+ 3706.619504
59-3	- 150941.212	- 39233.771	+ 5397.687488	+ 3318.912567
59-13	- 150993.363	- 39228.421	+ 6530.061873	+ 4013.386252
59-14	- 151009.851	- 39241.812	+ 5964.175271	+ 8084.893756
59-5	- 151010.864	- 39251.148	+ 8816.645568	+ 10733.458948
59-6	- 150983.813	- 39249.210	+ 9401.667324	+ 10376.617440
59-7	- 150983.804	- 39250.209	+ 9044.994840	+ 9229.066917
59-8	- 150960.827	- 39248.443	+ 8074.962843	+ 8904.017172
59-9	- 150898.573	- 39243.732	+ 4775.171839	+ 7033.286364
			+ 70264.134739	+ 73433.300383
		倍面積	= 3169.165644	
		面積	= 1584.582822	

1 LOT

点 名	X	Y	(X-X0)*(YN-1-Y0)	(XN-1-X0)*(Y-Y0)
X0·Y0	- 150800.000	- 39200.000		
59-29	- 150911.016	- 39244.674		
59-9	- 150898.573	- 39243.732	+ 4403.650202	+ 4854.951712
59-10	- 150897.171	- 39242.287	+ 4249.482172	+ 4168.356451
59-11	- 150896.971	- 39239.772	+ 4100.612677	+ 3864.685012
59-12	- 150898.277	- 39238.224	+ 3908.672844	+ 3706.619504
59-15	- 150911.614	- 39236.841	+ 4266.333536	+ 3620.622957
59-29	- 150911.016	- 39244.674	+ 4089.940456	+ 4986.243836
			+ 25018.691887	+ 25201.479472
		倍面積	= 182.787585	
		面積	= 91.393792	

2 LOT

点 名	X	Y	(X-X0)*(YN-1-Y0)	(XN-1-X0)*(Y-Y0)
X0·Y0	- 150900.000	- 39200.000		
59-15	- 150911.614	- 39236.841		
59-16	- 150927.453	- 39235.198	+ 1011.395973	+ 408.789572
59-28	- 150926.642	- 39245.856	+ 937.745116	+ 1258.884768
59-29	- 150911.016	- 39244.674	+ 505.149696	+ 1190.204708
59-15	- 150911.614	- 39236.841	+ 518.843836	+ 405.840456
			+ 2973.134621	+ 3263.719504
		倍面積	= 290.584883	
		面積	= 145.292441	

* * * * * 各 筆 面 積 計 算 書 * * * * *

3 LOT

点 名	X	Y	(X-X0)*(YN-1-Y0)	(XN-1-X0)*(Y-Y0)
X0·Y0	- 150900.000	- 39200.000		
59-16	- 150927.453	- 39235.198		
59-17	- 150931.981	- 39234.728	+ 1125.667238	+ 953.387784
59-27	- 150931.107	- 39246.194	+ 1080.283896	+ 1477.330314
59-28	- 150926.642	- 39245.856	+ 1230.700548	+ 1426.442592
59-16	- 150927.453	- 39235.198	+ 1258.884768	+ 937.745116
			+ 4695.536450	+ 4794.905806
		倍面積	= 99.369356	
		面積	= 49.684678	

4 LOT

点 名	X	Y	(X-X0)*(YN-1-Y0)	(XN-1-X0)*(Y-Y0)
X0·Y0	- 150900.000	- 39200.000		
59-17	- 150931.981	- 39234.728		
59-3	- 150941.212	- 39233.771	+ 1431.210336	+ 1080.030351
59-26	- 150940.239	- 39246.885	+ 1358.911269	+ 1932.224620
59-27	- 150931.107	- 39246.194	+ 1458.451695	+ 1858.800366
59-17	- 150931.981	- 39234.728	+ 1477.330314	+ 1080.283896
			+ 5725.903614	+ 5951.339233
		倍面積	= 225.435619	
		面積	= 112.717809	

5 LOT

点 名	X	Y	(X-X0)*(YN-1-Y0)	(XN-1-X0)*(Y-Y0)
X0·Y0	- 150900.000	- 39200.000		
59-3	- 150941.212	- 39233.771		
59-18	- 150952.243	- 39232.639	+ 1764.298353	+ 1345.118468
59-25	- 150951.207	- 39247.715	+ 1671.345273	+ 2492.774745
59-26	- 150940.239	- 39246.885	+ 1920.003885	+ 2400.840195
59-3	- 150941.212	- 39233.771	+ 1932.224620	+ 1358.911269
			+ 7287.872131	+ 7597.644677
		倍面積	= 309.772546	
		面積	= 154.886273	

6 LOT

点 名	X	Y	(X-X0)*(YN-1-Y0)	(XN-1-X0)*(Y-Y0)
X0·Y0	- 150900.000	- 39200.000		
59-18	- 150952.243	- 39232.639		
59-19	- 150962.103	- 39231.627	+ 2026.979817	+ 1652.289361
59-8	- 150960.827	- 39248.443	+ 1923.775529	+ 3008.455629

* * * * * 各 筆 面 積 計 算 書 * * * * *

点 名	X	Y	(X-X0)*(YN-1-Y0)	(XN-1-X0)*(Y-Y0)
59-25	- 150951.207	- 39247.715	+ 2480.620701	+ 2902.360305
59-18	- 150952.243	- 39232.639	+ 2492.774745	+ 1671.345273
			+ 8924.150792	+ 9234.450568
		倍面積	= 310.299776	
		面積	= 155.149888	

7 LOT

点 名	X	Y	(X-X0)*(YN-1-Y0)	(XN-1-X0)*(Y-Y0)
X0-Y0	- 150900.000	- 39200.000		
59-19	- 150962.103	- 39231.627		
59-20	- 150967.300	- 39231.095	+ 2128.497100	+ 1931.092785
59-24	- 150966.308	- 39248.864	+ 2061.847260	+ 3288.547200
59-8	- 150960.827	- 39248.443	+ 2972.250528	+ 3212.158444
59-19	- 150962.103	- 39231.627	+ 3008.455629	+ 1923.775529
			+ 10171.050517	+ 10355.573958
		倍面積	= 184.523441	
		面積	= 92.261720	

8 LOT

点 名	X	Y	(X-X0)*(YN-1-Y0)	(XN-1-X0)*(Y-Y0)
X0-Y0	- 150900.000	- 39200.000		
59-20	- 150967.300	- 39231.095		
59-21	- 150984.468	- 39229.334	+ 2626.532460	+ 1974.178200
59-23	- 150983.878	- 39245.197	+ 2460.477252	+ 3817.700196
59-6	- 150983.813	- 39249.210	+ 3788.096161	+ 4127.636380
59-7	- 150983.804	- 39250.209	+ 4123.994840	+ 4208.166917
59-24	- 150966.308	- 39248.864	+ 3329.258372	+ 4094.998656
59-20	- 150967.300	- 39231.095	+ 3288.547200	+ 2061.847260
			+ 19616.906285	+ 20284.527609
		倍面積	= 667.621324	
		面積	= 333.810662	

9 LOT

点 名	X	Y	(X-X0)*(YN-1-Y0)	(XN-1-X0)*(Y-Y0)
X0-Y0	- 150900.000	- 39200.000		
59-21	- 150984.468	- 39229.334		
59-13	- 150993.363	- 39228.421	+ 2738.710242	+ 2400.665028
59-14	- 151009.851	- 39241.812	+ 3122.075271	+ 3903.693756
59-22	- 151010.437	- 39247.210	+ 4617.591844	+ 5186.065710
59-23	- 150983.878	- 39245.197	+ 3959.880380	+ 4991.421089
59-21	- 150984.468	- 39229.334	+ 3817.700196	+ 2460.477252
			+ 18255.957933	+ 18942.322835
		倍面積	= 686.364902	
		面積	= 343.182451	

* * * * * 各 筆 面 積 計 算 書 * * * * *

リヨクテ

点 名	X	Y	(X-X0)*(YN-1-Y0)	(XN-1-X0)*(Y-Y0)
X0-Y0	- 150900.000	- 39200.000		
59-22	- 151010.437	- 39247.210		
59-5	- 151010.864	- 39251.148	+ 5233.889440	+ 5648.631676
59-6	- 150983.813	- 39249.210	+ 4286.867324	+ 5455.617440
59-23	- 150983.878	- 39245.197	+ 4127.636380	+ 3788.096161
59-22	- 151010.437	- 39247.210	+ 4991.421089	+ 3959.880380
			+ 18639.814233	+ 18852.225657
		倍面積	= 212.411424	
		面積	= 106.205712	

1 スミリ

点 名	X	Y	(X-X0)*(YN-1-Y0)	(XN-1-X0)*(Y-Y0)
X0-Y0	- 150800.000	- 39200.000		
59-1	- 150897.278	- 39243.634		
59-9	- 150898.573	- 39243.732	+ 4301.134282	+ 4254.161496
59-10	- 150897.171	- 39242.287	+ 4249.482172	+ 4168.356451
59-1	- 150897.278	- 39243.634	+ 4113.594786	+ 4239.959414
			+ 12664.211240	+ 12662.477361
		倍面積	= 1.733879	
		面積	= 0.866939	

2 スミリ

点 名	X	Y	(X-X0)*(YN-1-Y0)	(XN-1-X0)*(Y-Y0)
X0-Y0	- 150800.000	- 39200.000		
59-2	- 150896.860	- 39238.371		
59-11	- 150896.971	- 39239.772	+ 3720.874241	+ 3852.315920
59-12	- 150898.277	- 39238.224	+ 3908.672844	+ 3706.619504
59-2	- 150896.860	- 39238.371	+ 3702.376640	+ 3770.986767
			+ 11331.923725	+ 11329.922191
		倍面積	= 2.001534	
		面積	= 1.000767	

4 スミリ

点 名	X	Y	(X-X0)*(YN-1-Y0)	(XN-1-X0)*(Y-Y0)
X0-Y0	- 150900.000	- 39200.000		
59-4	- 151008.233	- 39226.896		
59-13	- 150993.363	- 39228.421	+ 2511.091248	+ 3076.090093
59-14	- 151009.851	- 39241.812	+ 3122.075271	+ 3903.693756
59-4	- 151008.233	- 39226.896	+ 4525.438196	+ 2954.552496
			+ 10158.604715	+ 9934.336345
		倍面積	= 224.268370	
		面積	= 112.134185	