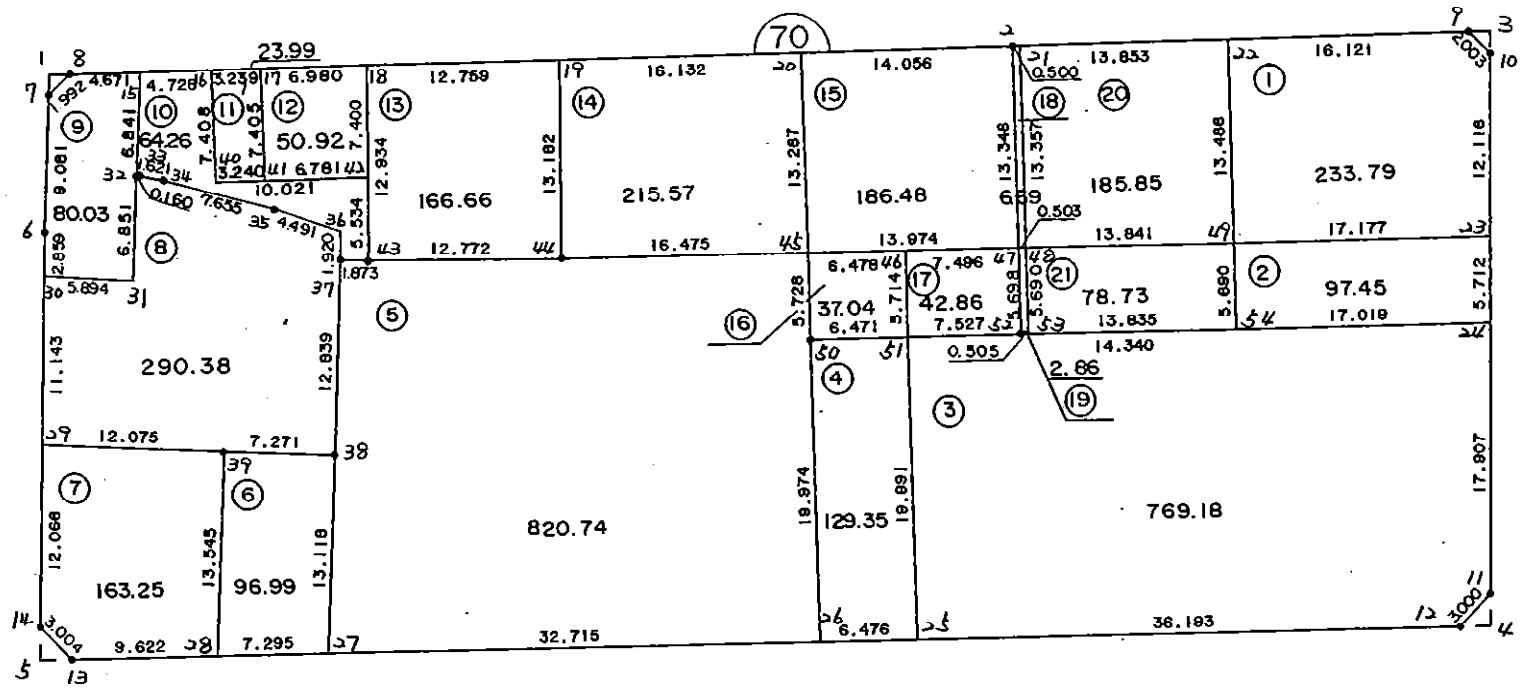


7 0 B L O C K



* * * 各筆面積 集計表 * * *

街区名・筆名	各筆面積	隅切面積
70 BLOCK	3743.13	
1 LOT	233.79	
2 LOT	97.45	
3 LOT	769.18	
4 LOT	129.35	
5 LOT	820.74	
6 LOT	96.99	
7 LOT	163.25	
8 LOT	290.38	
9 LOT	80.03	
10 LOT	64.26	
11 LOT	23.99	
12 LOT	50.92	
13 LOT	166.66	
14 LOT	215.57	
15 LOT	186.48	
16 LOT	37.04	
17 LOT	42.86	
18 LOT	6.69	
19 LOT	2.86	
20 LOT	185.85	
21 LOT	78.73	
1 スミキリ		0.92
3 スミキリ		1.04
4 スミキリ		2.18
5 スミキリ		2.35
合計 =	3743.07	6.49

* * * * * 各 筆 面 積 計 算 書 * * * * *

70 BLOCK

点 名	X	Y	(X-X0)*(Yn-1-Y0)	(Xn-1-X0)*(Y-Y0)
X0·Y0	- 150800.000	- 39300.000		
70-7	- 150852.806	- 39469.422		
70-8	- 150851.413	- 39467.998	+ 8710.493286	+ 8871.302388
70-2	- 150850.050	- 39405.448	+ 8408.299900	+ 5421.398024
70-9	- 150849.352	- 39374.982	+ 5204.069696	+ 3752.849100
70-10	- 150850.770	- 39373.567	+ 3806.836140	+ 3630.678584
70-11	- 150886.502	- 39374.023	+ 6363.692634	+ 3758.147710
70-12	- 150888.647	- 39376.121	+ 6561.916881	+ 6584.618742
70-13	- 150890.099	- 39468.410	+ 6858.425979	+ 14929.041270
70-14	- 150887.937	- 39470.496	+ 14809.470170	+ 15361.519104
70-6	- 150861.877	- 39469.832	+ 10549.780992	+ 14934.516584
70-7	- 150852.806	- 39469.422	+ 8968.148592	+ 10483.325094
			+ 80241.134270	+ 87727.396600
		倍面積	= 7486.262330	
		面積	= 3743.131165	

1 LOT

点 名	X	Y	(X-X0)*(Yn-1-Y0)	(Xn-1-X0)*(Y-Y0)
X0·Y0	- 150800.000	- 39300.000		
70-22	- 150849.722	- 39391.099		
70-9	- 150849.352	- 39374.982	+ 4495.917848	+ 3728.255004
70-10	- 150850.770	- 39373.567	+ 3806.836140	+ 3630.678584
70-23	- 150862.885	- 39373.722	+ 4626.260795	+ 3742.865940
70-49	- 150863.207	- 39390.896	+ 4659.746454	+ 5715.994960
70-22	- 150849.722	- 39391.099	+ 4519.530912	+ 5758.094493
			+ 22108.292149	+ 22575.888981
		倍面積	= 467.596832	
		面積	= 233.798416	

2 LOT

点 名	X	Y	(X-X0)*(Yn-1-Y0)	(Xn-1-X0)*(Y-Y0)
X0·Y0	- 150800.000	- 39300.000		
70-23	- 150862.885	- 39373.722		
70-24	- 150868.597	- 39373.795	+ 5057.108034	+ 4640.598575
70-54	- 150868.896	- 39390.811	+ 5084.180320	+ 6229.362167
70-49	- 150863.207	- 39390.896	+ 5739.890877	+ 6262.370816
70-23	- 150862.885	- 39373.722	+ 5715.994960	+ 4659.746454
			+ 21597.174191	+ 21792.078012
		倍面積	= 194.903821	
		面積	= 97.451910	

* * * * * 各 筆 面 積 計 算 書 * * * * *

3 LOT

点 名	X	Y	(X-X0)*(YN-1-Y0)	(XN-1-X0)*(Y-Y0)
X0·Y0	- 150800.000	- 39300.000		
70-24	- 150868.597	- 39373.795		
70-11	- 150886.502	- 39374.023	+ 6383.415090	+ 5077.755731
70-12	- 150888.647	- 39376.121	+ 6561.216881	+ 6584.618742
70-25	- 150889.217	- 39412.310	+ 6791.287257	+ 9955.944570
70-51	- 150869.229	- 39412.676	+ 7775.108990	+ 10052.614692
70-52	- 150869.091	- 39405.150	+ 7784.897516	+ 7279.429350
70-54	- 150868.896	- 39390.811	+ 7244.414400	+ 6274.222801
70-24	- 150868.597	- 39373.795	+ 6229.362167	+ 5084.180320
			+ 48770.402301	+ 50308.766206
		倍面積	= 1538.363905	
		面積	= 769.181952	

4 LOT

点 名	X	Y	(X-X0)*(YN-1-Y0)	(XN-1-X0)*(Y-Y0)
X0·Y0	- 150800.000	- 39400.000		
70-25	- 150889.217	- 39412.310		
70-26	- 150889.319	- 39418.785	+ 1099.516890	+ 1675.941345
70-50	- 150869.348	- 39419.146	+ 1302.702180	+ 1710.101574
70-51	- 150869.229	- 39412.676	+ 1325.458434	+ 879.055248
70-25	- 150889.217	- 39412.310	+ 1130.914692	+ 852.208990
			+ 4858.592196	+ 5117.307157
		倍面積	= 258.714961	
		面積	= 129.357480	

5 LOT

点 名	X	Y	(X-X0)*(YN-1-Y0)	(XN-1-X0)*(Y-Y0)
X0·Y0	- 150800.000	- 39400.000		
70-26	- 150889.319	- 39418.785		
70-27	- 150889.833	- 39451.495	+ 1687.512905	+ 4599.481905
70-38	- 150876.730	- 39450.862	+ 3951.211350	+ 4569.086046
70-37	- 150863.902	- 39450.329	+ 3250.183524	+ 3861.744170
70-43	- 150863.919	- 39448.456	+ 3216.979351	+ 3096.435312
70-44	- 150863.890	- 39435.684	+ 3095.853840	+ 2280.885596
70-45	- 150863.620	- 39419.211	+ 2270.216080	+ 1227.390790
70-50	- 150869.348	- 39419.146	+ 1332.244428	+ 1218.068520
70-26	- 150889.319	- 39418.785	+ 1710.101574	+ 1302.702180
			+ 20514.303052	+ 22155.794519
		倍面積	= 1641.491467	
		面積	= 820.745733	

* * * * * 各 筆 面 積 計 算 書 * * * * *

6 LOT

点 名	X	Y	(X-X0)*(Y1-Y0)	(XN-1-X0)*(Y-Y0)
X0·Y0	- 150800.000	- 39400.000		
70-27	- 150889.833	- 39451.495		
70-28	- 150889.948	- 39458.789	+ 4631.872260	+ 5281.192237
70-39	- 150876.419	- 39458.126	+ 4492.596591	+ 5228.317448
70-38	- 150876.730	- 39450.862	+ 4460.007980	+ 3886.823178
70-27	- 150889.833	- 39451.495	+ 4569.086046	+ 3951.211350
			+ 18153.562877	+ 18347.544213
		倍面積	= 193.981336	
		面積	= 96.990668	

7 LOT

点 名	X	Y	(X-X0)*(Y1-Y0)	(XN-1-X0)*(Y-Y0)
X0·Y0	- 150800.000	- 39400.000		
70-28	- 150889.948	- 39458.789		
70-13	- 150890.099	- 39468.410	+ 5296.830111	+ 6153.342680
70-14	- 150887.937	- 39470.496	+ 6015.770170	+ 6351.619104
70-29	- 150875.875	- 39470.189	+ 5348.884000	+ 6172.210093
70-39	- 150876.419	- 39458.126	+ 5363.773191	+ 4410.310250
70-28	- 150889.948	- 39458.789	+ 5228.317448	+ 4492.596591
			+ 27253.574920	+ 27580.078718
		倍面積	= 326.503798	
		面積	= 163.251899	

8 LOT

点 名	X	Y	(X-X0)*(Y1-Y0)	(XN-1-X0)*(Y-Y0)
X0·Y0	- 150800.000	- 39400.000		
70-29	- 150875.875	- 39470.189		
70-30	- 150864.735	- 39469.905	+ 4543.684915	+ 5304.041875
70-31	- 150864.985	- 39464.016	+ 4542.776425	+ 4144.075760
70-32	- 150858.145	- 39463.633	+ 3722.210320	+ 4135.190505
70-33	- 150858.157	- 39463.473	+ 3700.704381	+ 3690.637585
70-34	- 150858.481	- 39461.885	+ 3711.964513	+ 3599.045945
70-35	- 150860.469	- 39454.493	+ 3742.124065	+ 3186.805133
70-36	- 150861.983	- 39450.265	+ 3377.639619	+ 3039.474285
70-37	- 150863.902	- 39450.329	+ 3212.034030	+ 3119.542407
70-38	- 150876.730	- 39450.862	+ 3861.744170	+ 3250.183524
70-39	- 150876.419	- 39458.126	+ 3886.823178	+ 4460.007980
70-29	- 150875.875	- 39470.189	+ 4410.310250	+ 5363.773191
			+ 42712.015866	+ 43292.778190
		倍面積	= 580.762324	
		面積	= 290.381162	

* * * * * 各 筆 面 積 計 算 書 * * * * *

9 LOT

点 名	X	Y	(X-X0)*(YN-1-Y0)	(XN-1-X0)*(Y-Y0)
X0·Y0	- 150800.000	- 39400.000		
70-30	- 150864.735	- 39469.905		
70-6	- 150861.877	- 39469.832	+ 4325.511685	+ 4520.574520
70-7	- 150852.806	- 39469.422	+ 3687.548592	+ 4295.625094
70-8	- 150851.413	- 39467.998	+ 3569.193286	+ 3590.702388
70-15	- 150851.311	- 39463.328	+ 3489.045378	+ 3255.882464
70-32	- 150858.145	- 39463.633	+ 3682.206560	+ 3265.072863
70-31	- 150864.985	- 39464.016	+ 4135.190505	+ 3722.210320
70-30	- 150864.735	- 39469.905	+ 4144.075760	+ 4542.776425
			+ 27032.771766	+ 27192.844074
		倍面積	= 160.072308	
		面積	= 80.036154	

10 LOT

点 名	X	Y	(X-X0)*(YN-1-Y0)	(XN-1-X0)*(Y-Y0)
X0·Y0	- 150800.000	- 39400.000		
70-15	- 150851.311	- 39463.328		
70-16	- 150851.208	- 39458.601	+ 3242.900224	+ 3006.875911
70-40	- 150858.614	- 39458.444	+ 3434.839014	+ 2992.800352
70-42	- 150858.385	- 39448.426	+ 3412.252940	+ 2838.441564
70-43	- 150863.919	- 39448.456	+ 3095.341494	+ 2829.103560
70-37	- 150863.902	- 39450.329	+ 3096.435312	+ 3216.979351
70-36	- 150861.983	- 39450.265	+ 3119.542407	+ 3212.034030
70-35	- 150860.469	- 39454.493	+ 3039.474285	+ 3377.639619
70-34	- 150858.481	- 39461.885	+ 3186.805133	+ 3742.124065
70-33	- 150858.157	- 39463.473	+ 3599.045945	+ 3711.964513
70-32	- 150858.145	- 39463.633	+ 3690.637585	+ 3700.704381
70-15	- 150851.311	- 39463.328	+ 3265.072863	+ 3682.206560
			+ 36182.347202	+ 36310.873906
		倍面積	= 128.526704	
		面積	= 64.263352	

11 LOT

点 名	X	Y	(X-X0)*(YN-1-Y0)	(XN-1-X0)*(Y-Y0)
X0·Y0	- 150800.000	- 39400.000		
70-16	- 150851.208	- 39458.601		
70-17	- 150851.137	- 39455.363	+ 2996.679337	+ 2835.028504
70-41	- 150858.540	- 39455.205	+ 3240.950020	+ 2823.018085
70-40	- 150858.614	- 39458.444	+ 3235.785870	+ 3421.311760
70-16	- 150851.208	- 39458.601	+ 2992.800352	+ 3434.839014
			+ 12466.215579	+ 12514.197363
		倍面積	= 47.981784	
		面積	= 23.990892	

* * * * * 各 筆 面 積 計 算 書 * * * * *

12 LOT

点 名	X	Y	(X-X0)*(YN-1-Y0)	(XN-1-X0)*(Y-Y0)
X0·Y0	- 150800.000	- 39400.000		
70-17	- 150851.137	- 39455.363		
70-18	- 150850.985	- 39448.385	+ 2822.682555	+ 2474.263745
70-42	- 150858.385	- 39448.426	+ 2824.958225	+ 2468.999610
70-41	- 150858.540	- 39455.205	+ 2834.858040	+ 3223.143925
70-17	- 150851.137	- 39455.363	+ 2823.018085	+ 3240.950020
			+ 11305.516905	+ 11407.357300
		倍面積	= 101.840395	
		面積	= 50.920197	

13 LOT

点 名	X	Y	(X-X0)*(YN-1-Y0)	(XN-1-X0)*(Y-Y0)
X0·Y0	- 150800.000	- 39400.000		
70-18	- 150850.985	- 39448.385		
70-19	- 150850.708	- 39435.629	+ 2453.506580	+ 1816.544565
70-44	- 150863.890	- 39435.684	+ 2276.336810	+ 1809.464272
70-43	- 150863.919	- 39448.456	+ 2280.885596	+ 3095.853840
70-18	- 150850.985	- 39448.385	+ 2470.529160	+ 3092.720815
			+ 9481.258146	+ 9814.583492
		倍面積	= 333.325346	
		面積	= 166.662673	

14 LOT

点 名	X	Y	(X-X0)*(YN-1-Y0)	(XN-1-X0)*(Y-Y0)
X0·Y0	- 150800.000	- 39400.000		
70-19	- 150850.708	- 39435.629		
70-20	- 150850.356	- 39419.501	+ 1794.133924	+ 988.856708
70-45	- 150863.620	- 39419.211	+ 1240.653620	+ 967.389116
70-44	- 150863.890	- 39435.684	+ 1227.390790	+ 2270.216080
70-19	- 150850.708	- 39435.629	+ 1809.464272	+ 2276.336810
			+ 6071.642606	+ 6502.798714
		倍面積	= 431.156108	
		面積	= 215.578054	

15 LOT

点 名	X	Y	(X-X0)*(YN-1-Y0)	(XN-1-X0)*(Y-Y0)
X0·Y0	- 150800.000	- 39400.000		
70-20	- 150850.356	- 39419.501		
70-2	- 150850.050	- 39405.448	+ 976.025050	+ 274.339488
70-47	- 150863.394	- 39405.239	+ 345.370512	+ 262.211950

* * * * * 各 筆 面 積 計 算 書 * * * * *

点 名	X	Y	(X-X0)*(YN-1-Y0)	(XN-1-X0)*(Y-Y0)
70-45	- 150863.620	- 39419.211	+ 333.305180	+ 1217.862134
70-20	- 150850.356	- 39419.501	+ 967.389116	+ 1240.653620
			+ 2622.089858	+ 2995.067192
		倍面積	= 372.977334	
		面積	= 186.488667	

16 LOT

点 名	X	Y	(X-X0)*(YN-1-Y0)	(XN-1-X0)*(Y-Y0)
X0-Y0	- 150800.000	- 39400.000		
70-45	- 150863.620	- 39419.211		
70-46	- 150863.515	- 39412.734	+ 1220.186665	+ 810.137080
70-51	- 150869.229	- 39412.676	+ 881.562086	+ 805.116140
70-50	- 150869.348	- 39419.146	+ 879.055248	+ 1325.458434
70-45	- 150863.620	- 39419.211	+ 1218.068520	+ 1332.244428
			+ 4198.872519	+ 4272.956082
		倍面積	= 74.083563	
		面積	= 37.041781	

17 LOT

点 名	X	Y	(X-X0)*(YN-1-Y0)	(XN-1-X0)*(Y-Y0)
X0-Y0	- 150800.000	- 39400.000		
70-46	- 150863.515	- 39412.734		
70-47	- 150863.394	- 39405.239	+ 807.259196	+ 332.755085
70-52	- 150869.091	- 39405.150	+ 361.967749	+ 326.479100
70-51	- 150869.229	- 39412.676	+ 356.529350	+ 875.797516
70-46	- 150863.515	- 39412.734	+ 805.116140	+ 881.562086
			+ 2330.872435	+ 2416.593787
		倍面積	= 85.721352	
		面積	= 42.860676	

18 LOT

点 名	X	Y	(X-X0)*(YN-1-Y0)	(XN-1-X0)*(Y-Y0)
X0-Y0	- 150800.000	- 39400.000		
70-2	- 150850.050	- 39405.448		
70-21	- 150850.039	- 39404.948	+ 272.612472	+ 247.647400
70-48	- 150863.395	- 39404.736	+ 313.678460	+ 236.984704
70-47	- 150863.394	- 39405.239	+ 300.233984	+ 332.126405
70-2	- 150850.050	- 39405.448	+ 262.211950	+ 345.370512
			+ 1148.736866	+ 1162.129021
		倍面積	= 13.392155	
		面積	= 6.696077	

* * * * * 各 筆 面 積 計 算 書 * * * * *

19 LOT

点 名	X	Y	(X-XD)*(YN-1-YD)	(XN-1-XD)*(Y-YD)
XD·YD	- 150800.000	- 39400.000		
70-48	- 150863.395	- 39404.736		
70-53	- 150869.084	- 39404.645	+ 327.181824	+ 294.469775
70-52	- 150869.091	- 39405.150	+ 320.927695	+ 355.782600
70-47	- 150863.394	- 39405.239	+ 326.479100	+ 361.967749
70-48	- 150863.395	- 39404.736	+ 332.126405	+ 300.233984
			+ 1306.715024	+ 1312.454108
		倍面積	= 5.739084	
		面積	= 2.869542	

20 LOT

点 名	X	Y	(X-XD)*(YN-1-YD)	(XN-1-XD)*(Y-YD)
XD·YD	- 150800.000	- 39300.000		
70-21	- 150850.039	- 39404.948		
70-22	- 150849.722	- 39391.099	+ 5218.224456	+ 4558.502861
70-49	- 150863.207	- 39390.896	+ 5758.094493	+ 4519.530912
70-48	- 150863.395	- 39404.736	+ 5762.351920	+ 6620.048352
70-21	- 150850.039	- 39404.948	+ 5240.884704	+ 6653.178460
			+ 21979.555573	+ 22351.260585
		倍面積	= 371.705012	
		面積	= 185.852506	

21 LOT

点 名	X	Y	(X-XD)*(YN-1-YD)	(XN-1-XD)*(Y-YD)
XD·YD	- 150800.000	- 39300.000		
70-48	- 150863.395	- 39404.736		
70-49	- 150863.207	- 39390.896	+ 6620.048352	+ 5762.351920
70-54	- 150868.896	- 39390.811	+ 6262.370816	+ 5739.890877
70-53	- 150869.084	- 39404.645	+ 6273.587124	+ 7209.621920
70-48	- 150863.395	- 39404.736	+ 6633.969775	+ 7235.581824
			+ 25789.976067	+ 25947.446541
		倍面積	= 157.470474	
		面積	= 78.735237	

1 区

点 名	X	Y	(X-XD)*(YN-1-YD)	(XN-1-XD)*(Y-YD)
XD·YD	- 150800.000	- 39400.000		
70-1	- 150851.443	- 39469.360		
70-7	- 150852.806	- 39469.422	+ 3662.624160	+ 3571.275946
70-8	- 150851.413	- 39467.998	+ 3569.193286	+ 3590.702388

* * * * * 各 筆 面 積 計 算 書 * * * * *

点 名	X	Y	(X-X0)*(YN-1-Y0)	(XN-1-X0)*(Y-Y0)
70-1	- 150851.443	- 39469.360	+ 3498.021114	+ 3566.005680
			+ 10729.838560	+ 10727.984014
		倍面積	= 1.854546	
		面積	= 0.927273	

3 区切り

点 名	X	Y	(X-X0)*(YN-1-Y0)	(XN-1-X0)*(Y-Y0)
X0-Y0	- 150800.000	- 39300.000		
70-3	- 150849.319	- 39373.548		
70-9	- 150849.352	- 39374.982	+ 3629.740896	+ 3698.037258
70-10	- 150850.770	- 39373.567	+ 3806.836140	+ 3630.678584
70-3	- 150849.319	- 39373.548	+ 3628.250873	+ 3734.031960
			+ 11064.827909	+ 11062.747802
		倍面積	= 2.080107	
		面積	= 1.040053	

4 区切り

点 名	X	Y	(X-X0)*(YN-1-Y0)	(XN-1-X0)*(Y-Y0)
X0-Y0	- 150800.000	- 39300.000		
70-4	- 150888.614	- 39374.050		
70-11	- 150886.502	- 39374.023	+ 6405.473100	+ 6559.474122
70-12	- 150888.647	- 39376.121	+ 6561.916881	+ 6584.618742
70-4	- 150888.614	- 39374.050	+ 6745.386294	+ 6564.310350
			+ 19712.776275	+ 19708.403214
		倍面積	= 4.373061	
		面積	= 2.186530	

5 区切り

点 名	X	Y	(X-X0)*(YN-1-Y0)	(XN-1-X0)*(Y-Y0)
X0-Y0	- 150800.000	- 39400.000		
70-5	- 150890.133	- 39470.552		
70-13	- 150890.099	- 39468.410	+ 6356.664648	+ 6165.998530
70-14	- 150887.937	- 39470.496	+ 6015.770170	+ 6351.619104
70-5	- 150890.133	- 39470.552	+ 6354.015968	+ 6204.131224
			+ 18726.450786	+ 18721.748858
		倍面積	= 4.701928	
		面積	= 2.350964	