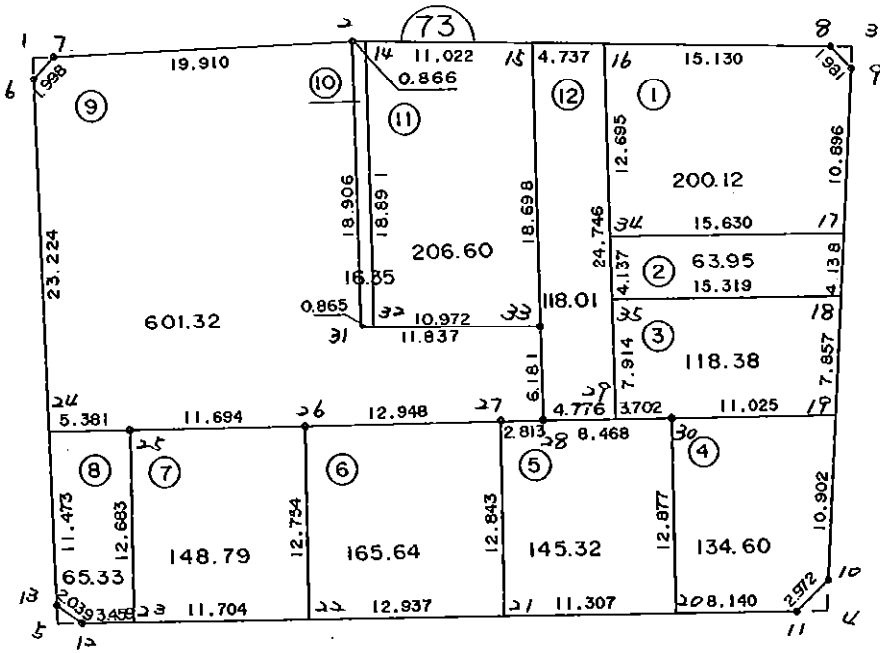


73  
B  
L  
O  
C  
K

7 3 B L O C K



\* \* \* 各筆面積 集計表 \* \* \*

街区名・筆名	各筆面積	隅切面積
73 BLOCK	1984.43	
1 LOT	200.12	
2 LOT	63.95	
3 LOT	118.38	
4 LOT	134.60	
5 LOT	145.32	
6 LOT	165.64	
7 LOT	148.79	
8 LOT	65.33	
9 LOT	601.32	
10 LOT	16.35	
11 LOT	206.60	
12 LOT	118.01	
1 ｽｽﾞｷ		0.98
3 ｽｽﾞｷ		1.01
4 ｽｽﾞｷ		2.06
5 ｽｽﾞｷ		0.97
合計 =	1984.41	5.02

\* \* \* \* \* 各 筆 面 積 計 算 書 \* \* \* \* \*

73 BLOCK

点 名	X	Y	(X-X0)*(YN-1-Y0)	(XN-1-X0)*(Y-Y0)
X0-Y0	- 150800.000	- 39400.000		
73-6	- 150896.506	- 39531.078		
73-7	- 150895.012	- 39529.752	+ 12453.982936	+ 12521.846512
73-2	- 150893.950	- 39509.870	+ 12190.200400	+ 10438.968440
73-8	- 150894.223	- 39478.116	+ 10352.281010	+ 7338.998200
73-9	- 150895.653	- 39476.745	+ 7472.029748	+ 7231.144135
73-10	- 150929.409	- 39478.324	+ 9931.493705	+ 7491.925572
73-11	- 150931.485	- 39480.451	+ 10298.431140	+ 10411.083459
73-12	- 150932.342	- 39527.990	+ 10647.046242	+ 16828.765150
73-13	- 150931.174	- 39529.661	+ 16788.960260	+ 17159.596062
73-6	- 150896.506	- 39531.078	+ 12513.064466	+ 17194.025572
			+102647.489907	+106616.353102
		倍面積	= 3968.863195	
		面積	= 1984.431597	

1 LOT

点 名	X	Y	(X-X0)*(YN-1-Y0)	(XN-1-X0)*(Y-Y0)
X0-Y0	- 150800.000	- 39400.000		
73-16	- 150894.093	- 39493.245		
73-8	- 150894.223	- 39478.116	+ 8785.823635	+ 7350.168788
73-9	- 150895.653	- 39476.745	+ 7472.029748	+ 7231.144135
73-17	- 150906.537	- 39477.254	+ 8176.182065	+ 7389.576862
73-34	- 150906.783	- 39492.882	+ 8249.413882	+ 9895.369634
73-16	- 150894.093	- 39493.245	+ 8739.546026	+ 9956.980835
			+ 41422.995356	+ 41823.240254
		倍面積	= 400.244898	
		面積	= 200.122449	

2 LOT

点 名	X	Y	(X-X0)*(YN-1-Y0)	(XN-1-X0)*(Y-Y0)
X0-Y0	- 150900.000	- 39400.000		
73-17	- 150906.537	- 39477.254		
73-18	- 150910.670	- 39477.447	+ 824.300180	+ 506.271039
73-35	- 150910.918	- 39492.764	+ 845.566346	+ 989.791880
73-34	- 150906.783	- 39492.882	+ 629.218212	+ 1014.085676
73-17	- 150906.537	- 39477.254	+ 607.169634	+ 524.013882
			+ 2906.254372	+ 3034.162477
		倍面積	= 127.908105	
		面積	= 63.954052	

\* \* \* \* \* 各 筆 面 積 計 算 書 \* \* \* \* \*

3 LOT

点 名	X	Y	(X-X0)*(YN-1-Y0)	(XN-1-X0)*(Y-Y0)
X0-Y0	- 150900.000	- 39400.000		
73-18	- 150910.670	- 39477.447		
73-19	- 150918.519	- 39477.815	+ 1434.240993	+ 830.286050
73-30	- 150918.757	- 39488.837	+ 1459.575955	+ 1645.172403
73-29	- 150918.829	- 39492.538	+ 1672.711873	+ 1735.735266
73-35	- 150910.918	- 39492.764	+ 1010.329884	+ 1746.653356
73-18	- 150910.670	- 39477.447	+ 989.791880	+ 845.566346
			+ 6566.650585	+ 6803.413421
		倍面積	= 236.762836	
		面積	= 118.381418	

4 LOT

点 名	X	Y	(X-X0)*(YN-1-Y0)	(XN-1-X0)*(Y-Y0)
X0-Y0	- 150900.000	- 39400.000		
73-19	- 150918.519	- 39477.815		
73-10	- 150929.409	- 39478.324	+ 2288.461335	+ 1450.482156
73-11	- 150931.485	- 39480.451	+ 2466.031140	+ 2365.983459
73-20	- 150931.632	- 39488.590	+ 2544.826032	+ 2789.256150
73-30	- 150918.757	- 39488.837	+ 1661.682630	+ 2810.091984
73-19	- 150918.519	- 39477.815	+ 1645.172403	+ 1459.575955
			+ 10606.173540	+ 10875.389704
		倍面積	= 269.216164	
		面積	= 134.608082	

5 LOT

点 名	X	Y	(X-X0)*(YN-1-Y0)	(XN-1-X0)*(Y-Y0)
X0-Y0	- 150900.000	- 39400.000		
73-20	- 150931.632	- 39488.590		
73-21	- 150931.836	- 39499.895	+ 2820.351240	+ 3159.878640
73-27	- 150918.995	- 39500.115	+ 1897.505525	+ 3187.261140
73-28	- 150918.921	- 39497.303	+ 1894.275915	+ 1848.270485
73-30	- 150918.757	- 39488.837	+ 1825.112371	+ 1680.884877
73-20	- 150931.632	- 39488.590	+ 2810.091984	+ 1661.682630
			+ 11247.337035	+ 11537.977772
		倍面積	= 290.640737	
		面積	= 145.320368	

6 LOT

点 名	X	Y	(X-X0)*(YN-1-Y0)	(XN-1-X0)*(Y-Y0)
X0-Y0	- 150900.000	- 39400.000		
73-21	- 150931.836	- 39499.895		
73-22	- 150932.069	- 39512.830	+ 3203.532755	+ 3592.055880

\* \* \* \* \* 各 筆 面 積 計 算 書 \* \* \* \* \*

点 名	X	Y	(X-X0)*(YN-1-Y0)	(XN-1-X0)*(Y-Y0)
73-26	- 150919.317	- 39513.059	+ 2179.537110	+ 3625.689071
73-27	- 150918.995	- 39500.115	+ 2147.555705	+ 1933.921455
73-21	- 150931.836	- 39499.895	+ 3187.261140	+ 1897.505525
			+ 10717.886710	+ 11049.171931
		倍面積	= 331.285221	
		面積	= 165.642610	

7 LOT

点 名	X	Y	(X-X0)*(YN-1-Y0)	(XN-1-X0)*(Y-Y0)
X0·Y0	- 150900.000	- 39500.000		
73-22	- 150932.069	- 39512.830		
73-23	- 150932.280	- 39524.532	+ 414.152400	+ 786.716708
73-25	- 150919.599	- 39524.750	+ 480.802668	+ 798.930000
73-26	- 150919.317	- 39513.059	+ 478.095750	+ 255.943341
73-22	- 150932.069	- 39512.830	+ 418.789071	+ 247.837110
			+ 1791.839889	+ 2089.427159
		倍面積	= 297.587270	
		面積	= 148.793635	

8 LOT

点 名	X	Y	(X-X0)*(YN-1-Y0)	(XN-1-X0)*(Y-Y0)
X0·Y0	- 150900.000	- 39500.000		
73-23	- 150932.280	- 39524.532		
73-12	- 150932.342	- 39527.990	+ 793.413944	+ 903.517200
73-13	- 150931.174	- 39529.661	+ 872.560260	+ 959.296062
73-24	- 150919.711	- 39530.130	+ 584.647971	+ 939.272620
73-25	- 150919.599	- 39524.750	+ 590.517870	+ 487.847250
73-23	- 150932.280	- 39524.532	+ 798.930000	+ 480.802668
			+ 3640.070045	+ 3770.735800
		倍面積	= 130.665755	
		面積	= 65.332877	

9 LOT

点 名	X	Y	(X-X0)*(YN-1-Y0)	(XN-1-X0)*(Y-Y0)
X0·Y0	- 150800.000	- 39400.000		
73-24	- 150919.711	- 39530.130		
73-6	- 150896.506	- 39531.078	+ 12558.325780	+ 15691.478458
73-7	- 150895.012	- 39529.752	+ 12453.982936	+ 12521.846512
73-2	- 150893.950	- 39509.870	+ 12190.200400	+ 10438.968440
73-31	- 150912.848	- 39509.322	+ 12398.609760	+ 10270.801900
73-33	- 150912.743	- 39497.485	+ 12325.290246	+ 11000.987280
73-28	- 150918.921	- 39497.303	+ 11593.013685	+ 10970.232129

\* \* \* \* \* 各 筆 面 積 計 算 書 \* \* \* \* \*

点 名	X	Y	(X-X0)*(YN-1-Y0)	(XN-1-X0)*(Y-Y0)
73-27	- 150918.995	- 39500.115	+ 11578.570485	+ 11905.775915
73-26	- 150919.317	- 39513.059	+ 11945.421455	+ 13453.455705
73-25	- 150919.599	- 39524.750	+ 13521.743341	+ 14884.795750
73-24	- 150919.711	- 39530.130	+ 14933.947250	+ 15563.417870
			+ 125499.105338	+ 126701.759959
		倍面積	= 1202.654621	
		面積	= 601.327310	

10 LOT

点 名	X	Y	(X-X0)*(YN-1-Y0)	(XN-1-X0)*(Y-Y0)
X0-Y0	- 150800.000	- 39500.000		
73-2	- 150893.950	- 39509.870		
73-14	- 150893.957	- 39509.004	+ 927.355590	+ 845.925800
73-32	- 150912.840	- 39508.457	+ 1016.011360	+ 794.594349
73-31	- 150912.848	- 39509.322	+ 954.355536	+ 1051.894480
73-2	- 150893.950	- 39509.870	+ 875.801900	+ 1113.809760
			+ 3773.524386	+ 3806.224389
		倍面積	= 32.700003	
		面積	= 16.350001	

11 LOT

点 名	X	Y	(X-X0)*(YN-1-Y0)	(XN-1-X0)*(Y-Y0)
X0-Y0	- 150800.000	- 39400.000		
73-14	- 150893.957	- 39509.004		
73-15	- 150894.052	- 39497.982	+ 10252.044208	+ 9206.094774
73-33	- 150912.743	- 39497.485	+ 11046.784626	+ 9168.659220
73-32	- 150912.840	- 39508.457	+ 11000.207400	+ 12227.767551
73-14	- 150893.957	- 39509.004	+ 10190.294349	+ 12300.011360
			+ 42489.330583	+ 42902.532905
		倍面積	= 413.202322	
		面積	= 206.601161	

12 LOT

点 名	X	Y	(X-X0)*(YN-1-Y0)	(XN-1-X0)*(Y-Y0)
X0-Y0	- 150800.000	- 39400.000		
73-15	- 150894.052	- 39497.982		
73-16	- 150894.093	- 39493.245	+ 9219.420326	+ 8769.878740
73-29	- 150918.829	- 39492.538	+ 11080.210105	+ 8707.178034
73-28	- 150918.921	- 39497.303	+ 11004.711498	+ 11562.418187
73-33	- 150912.743	- 39497.485	+ 10970.232129	+ 11593.013685
73-15	- 150894.052	- 39497.982	+ 9168.659220	+ 11046.784626
			+ 51443.233278	+ 51679.273272
		倍面積	= 236.039994	
		面積	= 118.019997	

\* \* \* \* \* 各 筆 面 積 計 算 書 \* \* \* \* \*

1 区画

点 名	X	Y	(X-X0)*(YN-1-Y0)	(XN-1-X0)*(Y-Y0)
X0-Y0	- 150800.000	- 39500.000		
73-1	- 150895.086	- 39531.136		
73-6	- 150896.506	- 39531.078	+ 3004.810816	+ 2955.082708
73-7	- 150895.012	- 39529.752	+ 2952.782936	+ 2871.246512
73-1	- 150895.086	- 39531.136	+ 2828.998672	+ 2958.293632
			+ 8786.592424	+ 8784.622852
		倍面積	= 1.969572	
		面積	= 0.984786	

3 区画

点 名	X	Y	(X-X0)*(YN-1-Y0)	(XN-1-X0)*(Y-Y0)
X0-Y0	- 150800.000	- 39400.000		
73-3	- 150894.235	- 39476.679		
73-8	- 150894.223	- 39478.116	+ 7224.925417	+ 7361.261260
73-9	- 150895.653	- 39476.745	+ 7472.029748	+ 7231.144135
73-3	- 150894.235	- 39476.679	+ 7232.065075	+ 7334.576387
			+ 21929.020240	+ 21926.981782
		倍面積	= 2.038458	
		面積	= 1.019229	

4 区画

点 名	X	Y	(X-X0)*(YN-1-Y0)	(XN-1-X0)*(Y-Y0)
X0-Y0	- 150900.000	- 39400.000		
73-4	- 150931.448	- 39478.419		
73-10	- 150929.409	- 39478.324	+ 2306.224371	+ 2463.133152
73-11	- 150931.485	- 39480.451	+ 2466.031140	+ 2365.983459
73-4	- 150931.448	- 39478.419	+ 2530.023048	+ 2469.022215
			+ 7302.278559	+ 7298.138826
		倍面積	= 4.139733	
		面積	= 2.069866	

5 区画

点 名	X	Y	(X-X0)*(YN-1-Y0)	(XN-1-X0)*(Y-Y0)
X0-Y0	- 150900.000	- 39500.000		
73-5	- 150932.371	- 39529.612		
73-12	- 150932.342	- 39527.990	+ 957.711304	+ 906.064290
73-13	- 150931.174	- 39529.661	+ 872.560260	+ 959.296062
73-5	- 150932.371	- 39529.612	+ 960.156231	+ 923.124488
			+ 2790.427795	+ 2788.484840
		倍面積	= 1.942955	
		面積	= 0.971477	