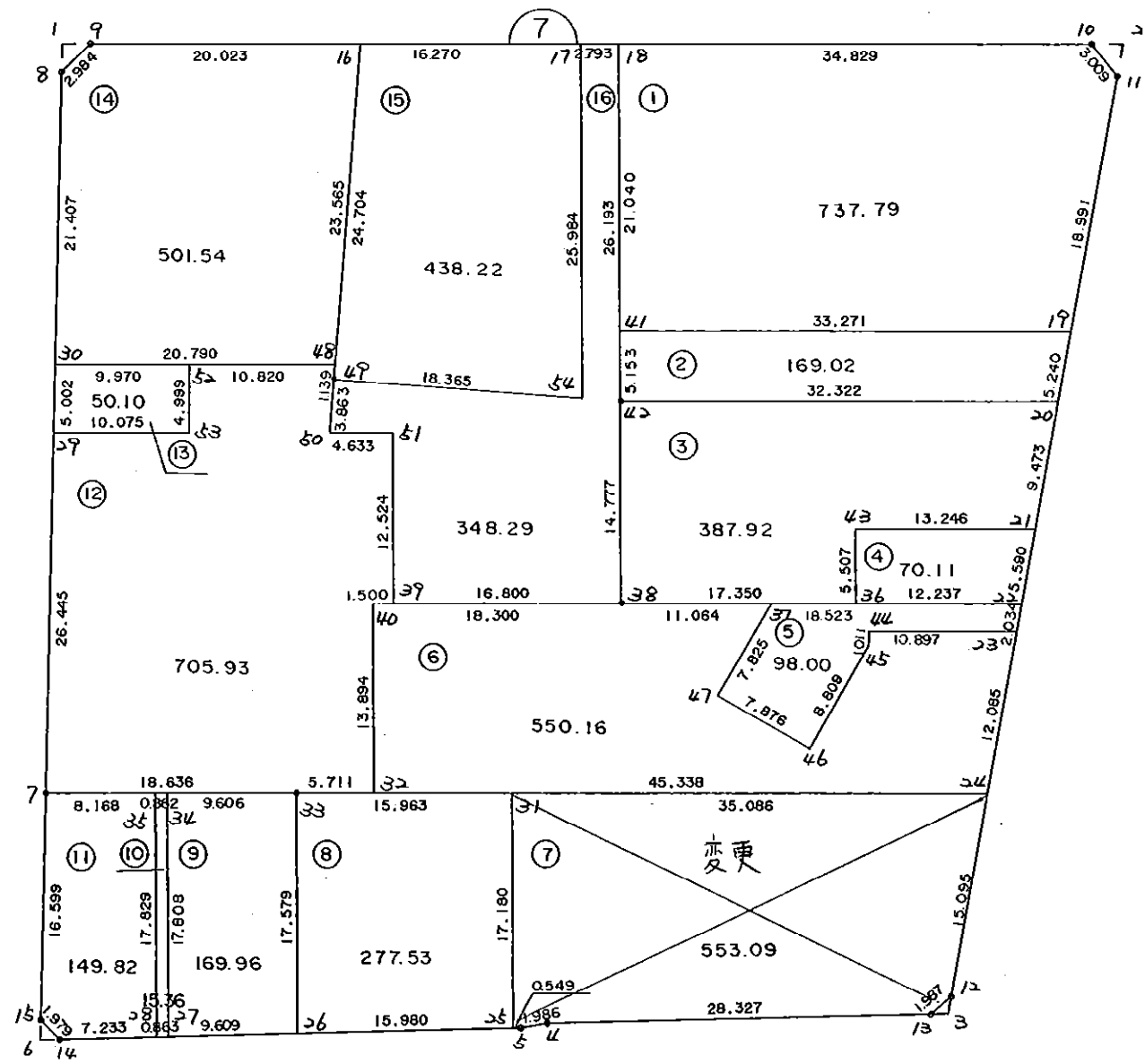


7 B L O C K



* * * 各筆面積 集計表 * * *

街区名・筆名	各筆面積	隅切面積
7 BLOCK	5222.93	
1 LOT	737.79	
2 LOT	169.02	
3 LOT	387.92	
4 LOT	70.11	
5 LOT	98.00	
6 LOT	550.16	
7 LOT	553.09	{ 7-1 LOT 7.07m ² { 7-2 LOT 546.02m ²
8 LOT	277.53	
9 LOT	169.96	
10 LOT	15.36	
11 LOT	149.82	
12 LOT	705.93	
13 LOT	50.10	
14 LOT	501.54	
15 LOT	438.22	
16 LOT	348.29	
1 スミキリ		2.16
2 スミキリ		2.71
3 スミキリ		0.80
6 スミキリ		1.03
合計 =	5222.84	6.70

* * * * * 各 筆 面 積 計 算 書 * * * * *

7 BLOCK

点 名	X	Y	(X-X0)*(YN-1-Y0)	(XN-1-X0)*(Y-Y0)
X0·Y0	- 150600.000	- 38500.000		
7-8	- 150629.431	- 38637.448		
7-9	- 150627.052	- 38635.647	+ 3718.243296	+ 3992.226857
7-10	- 150615.969	- 38562.567	+ 2166.146943	+ 1692.562484
7-11	- 150618.007	- 38560.353	+ 1126.643969	+ 963.777057
7-12	- 150686.483	- 38562.448	+ 5219.508499	+ 1124.501136
7-13	- 150687.982	- 38563.752	+ 5494.299936	+ 5513.464216
7-4	- 150692.905	- 38591.648	+ 5922.879560	+ 8063.374336
7-5	- 150693.545	- 38593.528	+ 8573.212160	+ 8689.218840
7-14	- 150699.529	- 38627.235	+ 9308.748312	+ 11902.198075
7-15	- 150698.346	- 38628.821	+ 12513.053310	+ 12821.425309
7-7	- 150681.875	- 38630.879	+ 10547.219375	+ 12871.426134
7-8	- 150629.431	- 38637.448	+ 3851.899849	+ 11253.555000
			+ 68441.855209	+ 78887.729444
		倍面積	= 10445.874235	
		面積	= 5222.937117	

1 LOT

点 名	X	Y	(X-X0)*(YN-1-Y0)	(XN-1-X0)*(Y-Y0)
X0·Y0	- 150600.000	- 38500.000		
7-18	- 150621.191	- 38597.002		
7-10	- 150615.969	- 38562.567	+ 1549.024938	+ 1325.857297
7-11	- 150618.007	- 38560.353	+ 1126.643969	+ 963.777057
7-19	- 150636.989	- 38560.934	+ 2232.397117	+ 1097.238538
7-41	- 150641.990	- 38593.827	+ 2558.618660	+ 3470.566903
7-18	- 150621.191	- 38597.002	+ 1988.287957	+ 4073.113980
			+ 9454.972641	+ 10930.553775
		倍面積	= 1475.581134	
		面積	= 737.790567	

2 LOT

点 名	X	Y	(X-X0)*(YN-1-Y0)	(XN-1-X0)*(Y-Y0)
X0·Y0	- 150600.000	- 38500.000		
7-19	- 150636.989	- 38560.934		
7-20	- 150642.227	- 38561.094	+ 2573.060018	+ 2259.805966
7-42	- 150647.084	- 38593.049	+ 2876.549896	+ 3929.180123
7-41	- 150641.990	- 38593.827	+ 3907.127510	+ 4417.750468
7-19	- 150636.989	- 38560.934	+ 3470.566903	+ 2558.618660
			+ 12827.304327	+ 13165.355217
		倍面積	= 338.050890	
		面積	= 169.025445	

* * * * * 各 筆 面 積 計 算 書 * * * * *

3 LOT

点 名	X	Y	(X-X0)*(YN-1-Y0)	(XN-1-X0)*(Y-Y0)
X0·Y0	- 150600.000	- 38500.000		
7-20	- 150642.227	- 38561.094		
7-21	- 150651.696	- 38561.384	+ 3158.315424	+ 2592.062168
7-43	- 150653.662	- 38574.483	+ 3293.988208	+ 3850.473168
7-36	- 150659.106	- 38573.654	+ 4402.392198	+ 3952.420948
7-38	- 150661.691	- 38590.811	+ 4543.788914	+ 5367.474966
7-42	- 150647.084	- 38593.049	+ 4275.745124	+ 5740.285859
7-20	- 150642.227	- 38561.094	+ 3929.180123	+ 2876.549896
			+ 23603.409991	+ 24379.267005
		倍面積	= 775.857014	
		面積	= 387.928507	

4 LOT

点 名	X	Y	(X-X0)*(YN-1-Y0)	(XN-1-X0)*(Y-Y0)
X0·Y0	- 150600.000	- 38500.000		
7-21	- 150651.696	- 38561.384		
7-22	- 150657.283	- 38561.554	+ 3516.259672	+ 3182.095584
7-36	- 150659.106	- 38573.654	+ 3638.210724	+ 4219.122082
7-43	- 150653.662	- 38574.483	+ 3952.420948	+ 4402.392198
7-21	- 150651.696	- 38561.384	+ 3850.473168	+ 3293.988208
			+ 14957.364512	+ 15097.598072
		倍面積	= 140.233560	
		面積	= 70.116780	

5 LOT

点 名	X	Y	(X-X0)*(YN-1-Y0)	(XN-1-X0)*(Y-Y0)
X0·Y0	- 150600.000	- 38500.000		
7-22	- 150657.283	- 38561.554		
7-23	- 150659.316	- 38561.616	+ 3651.137064	+ 3529.549328
7-44	- 150660.925	- 38572.394	+ 3753.954800	+ 4294.122504
7-45	- 150661.928	- 38572.271	+ 4483.215632	+ 4403.110675
7-46	- 150670.134	- 38575.473	+ 5068.654314	+ 4673.891944
7-47	- 150667.291	- 38582.818	+ 5078.653643	+ 5808.357612
7-37	- 150660.043	- 38579.870	+ 4972.641174	+ 5374.532170
7-22	- 150657.283	- 38561.554	+ 4575.193210	+ 3695.886822
			+ 31583.449837	+ 31779.451055
		倍面積	= 196.001218	
		面積	= 98.000609	

6 LOT

点 名	X	Y	(X-X0)*(YN-1-Y0)	(XN-1-X0)*(Y-Y0)
X0·Y0	- 150600.000	- 38500.000		
7-23	- 150659.316	- 38561.616		
7-24	- 150671.395	- 38561.986	+ 4399.074320	+ 3676.761576

* * * * * 各 筆 面 積 計 算 書 * * * * *

点 名	X	Y	(X-X0)*(YN-1-Y0)	(XN-1-X0)*(Y-Y0)
7-32	- 150678.199	- 38606.811	+ 4847.243214	+ 7625.771345
7-40	- 150664.463	- 38608.900	+ 6885.357493	+ 8515.871100
7-38	- 150661.691	- 38590.811	+ 6718.149900	+ 5853.949493
7-37	- 150660.043	- 38579.870	+ 5452.564873	+ 4927.260170
7-47	- 150667.291	- 38582.818	+ 5374.532170	+ 4972.641174
7-46	- 150670.134	- 38575.473	+ 5808.357612	+ 5078.653643
7-45	- 150661.928	- 38572.271	+ 4673.891944	+ 5068.654314
7-44	- 150660.925	- 38572.394	+ 4403.110675	+ 4483.215632
7-23	- 150659.316	- 38561.616	+ 4294.122504	+ 3753.954800

+ 52856.404705 + 53956.733247
 倍面積 = 1100.328542
 面積 = 550.164271

~~7 LOT~~

点 名	X	Y	(X-X0)*(YN-1-Y0)	(XN-1-X0)*(Y-Y0)
X0·Y0	- 150600.000	- 38500.000		
7-24	- 150671.395	- 38561.986		
7-12	- 150686.483	- 38562.448	+ 5360.735238	+ 4458.474960
7-13	- 150687.982	- 38563.752	+ 5494.299936	+ 5513.464216
7-4	- 150692.905	- 38591.648	+ 5922.879560	+ 8063.374336
7-5	- 150693.545	- 38593.528	+ 8573.212160	+ 8689.218840
7-25	- 150693.641	- 38594.069	+ 8758.055448	+ 8799.684605
7-31	- 150676.660	- 38596.675	+ 7211.329540	+ 9052.743675
7-24	- 150671.395	- 38561.986	+ 6902.111625	+ 4751.846760

+ 48222.623507 + 49328.807392
 倍面積 = 1106.183885
 面積 = 553.091942

8 LOT

点 名	X	Y	(X-X0)*(YN-1-Y0)	(XN-1-X0)*(Y-Y0)
X0·Y0	- 150600.000	- 38500.000		
7-25	- 150693.641	- 38594.069		
7-26	- 150696.434	- 38609.803	+ 9071.449946	+ 10282.062723
7-33	- 150679.056	- 38612.457	+ 8680.585968	+ 10844.678338
7-31	- 150676.660	- 38596.675	+ 8620.953620	+ 7642.738800
7-25	- 150693.641	- 38594.069	+ 9052.743675	+ 7211.329540

+ 35425.733209 + 35980.809401
 倍面積 = 555.076192
 面積 = 277.538096

9 LOT

点 名	X	Y	(X-X0)*(YN-1-Y0)	(XN-1-X0)*(Y-Y0)
X0·Y0	- 150600.000	- 38600.000		
7-26	- 150696.434	- 38609.803		
7-27	- 150698.114	- 38619.263	+ 961.811542	+ 1857.608142

* * * * * 各 筆 面 積 計 算 書 * * * * *

点 名	X	Y	(X-X0)*(YN-1-Y0)	(XN-1-X0)*(Y-Y0)
7-34	- 150680.510	- 38621.953	+ 1550.864130	+ 2153.896642
7-33	- 150679.056	- 38612.457	+ 1735.516368	+ 1002.913070
7-26	- 150696.434	- 38609.803	+ 1201.278338	+ 774.985968
			+ 5449.470378	+ 5789.403822
		倍面積	= 339.933444	
		面積	= 169.966722	

10 LOT

点 名	X	Y	(X-X0)*(YN-1-Y0)	(XN-1-X0)*(Y-Y0)
X0·Y0	- 150600.000	- 38600.000		
7-27	- 150698.114	- 38619.263		
7-28	- 150698.265	- 38620.113	+ 1892.878695	+ 1973.366882
7-35	- 150680.640	- 38622.805	+ 1621.912320	+ 2240.933325
7-34	- 150680.510	- 38621.953	+ 1836.030550	+ 1770.289920
7-27	- 150698.114	- 38619.263	+ 2153.896642	+ 1550.864130
			+ 7504.718207	+ 7535.454257
		倍面積	= 30.736050	
		面積	= 15.368025	

11 LOT

点 名	X	Y	(X-X0)*(YN-1-Y0)	(XN-1-X0)*(Y-Y0)
X0·Y0	- 150600.000	- 38600.000		
7-28	- 150698.265	- 38620.113		
7-14	- 150699.529	- 38627.235	+ 2001.826777	+ 2676.247275
7-15	- 150698.346	- 38628.821	+ 2678.453310	+ 2868.525309
7-7	- 150681.875	- 38630.879	+ 2359.719375	+ 3036.826134
7-35	- 150680.640	- 38622.805	+ 2490.082560	+ 1867.159375
7-28	- 150698.265	- 38620.113	+ 2240.933325	+ 1621.912320
			+ 11771.015347	+ 12070.670413
		倍面積	= 299.655066	
		面積	= 149.827533	

12 LOT

点 名	X	Y	(X-X0)*(YN-1-Y0)	(XN-1-X0)*(Y-Y0)
X0·Y0	- 150600.000	- 38600.000		
7-7	- 150681.875	- 38630.879		
7-29	- 150655.635	- 38634.165	+ 1717.953165	+ 2797.259375
7-53	- 150654.126	- 38624.204	+ 1849.214790	+ 1346.589540
7-52	- 150649.180	- 38624.929	+ 1190.352720	+ 1349.307054
7-48	- 150647.560	- 38614.231	+ 1185.623240	+ 699.880580
7-49	- 150648.696	- 38614.153	+ 692.992776	+ 673.116680
7-50	- 150652.550	- 38613.886	+ 743.740150	+ 676.192656

* * * * * 各 筆 面 積 計 算 書 * * * * *

点 名	X	Y	(X-X0)*(YN-1-Y0)	(XN-1-X0)*(Y-Y0)
7-51	- 150651.855	- 38609.305	+ 720.058530	+ 488.977750
7-39	- 150664.236	- 38607.417	+ 597.715980	+ 384.608535
7-40	- 150664.463	- 38608.900	+ 478.122071	+ 571.700400
7-32	- 150678.199	- 38606.811	+ 695.971100	+ 439.057493
7-33	- 150679.056	- 38612.457	+ 538.450416	+ 974.124943
7-7	- 150681.875	- 38630.879	+ 1019.916875	+ 2441.170224
			+ 11430.111813	+ 12841.985230
		倍面積	= 1411.873417	
		面積	= 705.936708	

13 LOT

点 名	X	Y	(X-X0)*(YN-1-Y0)	(XN-1-X0)*(Y-Y0)
X0·Y0	- 150600.000	- 38600.000		
7-29	- 150655.635	- 38634.165		
7-30	- 150650.672	- 38634.787	+ 1731.208880	+ 1935.374745
7-52	- 150649.180	- 38624.929	+ 1710.824660	+ 1263.202288
7-53	- 150654.126	- 38624.204	+ 1349.307054	+ 1190.352720
7-29	- 150655.635	- 38634.165	+ 1346.589540	+ 1849.214790
			+ 6137.930134	+ 6238.144543
		倍面積	= 100.214409	
		面積	= 50.107204	

14 LOT

点 名	X	Y	(X-X0)*(YN-1-Y0)	(XN-1-X0)*(Y-Y0)
X0·Y0	- 150600.000	- 38600.000		
7-30	- 150650.672	- 38634.787		
7-8	- 150629.431	- 38637.448	+ 1023.816197	+ 1897.565056
7-9	- 150627.052	- 38635.647	+ 1013.043296	+ 1049.126857
7-16	- 150624.050	- 38615.850	+ 857.310350	+ 428.774200
7-48	- 150647.560	- 38614.231	+ 753.826000	+ 342.255550
7-30	- 150650.672	- 38634.787	+ 721.113232	+ 1654.469720
			+ 4369.109075	+ 5372.191383
		倍面積	= 1003.082308	
		面積	= 501.541154	

15 LOT

点 名	X	Y	(X-X0)*(YN-1-Y0)	(XN-1-X0)*(Y-Y0)
X0·Y0	- 150600.000	- 38500.000		
7-16	- 150624.050	- 38615.850		
7-17	- 150621.611	- 38599.764	+ 2503.634350	+ 2399.324200
7-54	- 150647.297	- 38595.841	+ 4718.537908	+ 2071.219851
7-49	- 150648.696	- 38614.153	+ 4667.073336	+ 5399.094441

* * * * * 各 筆 面 積 計 算 書 * * * * *

点 名	X	Y	(X-X0)*(YN-1-Y0)	(XN-1-X0)*(Y-Y0)
7-16	- 150624.050	- 38615.850	+ 2745.379650	+ 5641.431600
			+ 14634.625244	+ 15511.070092
		倍面積	= 876.444848	
		面積	= 438.222424	

16 LOT

点 名	X	Y	(X-X0)*(YN-1-Y0)	(XN-1-X0)*(Y-Y0)
X0·Y0	- 150600.000	- 38500.000		
7-17	- 150621.611	- 38599.764		
7-18	- 150621.191	- 38597.002	+ 2114.098924	+ 2096.310222
7-42	- 150647.084	- 38593.049	+ 4567.242168	+ 1971.801359
7-38	- 150661.691	- 38590.811	+ 5740.285859	+ 4275.745124
7-39	- 150664.236	- 38607.417	+ 5833.335396	+ 6626.662147
7-51	- 150651.855	- 38609.305	+ 5570.108535	+ 7021.315980
7-50	- 150652.550	- 38613.886	+ 5743.977750	+ 5905.558530
7-49	- 150648.696	- 38614.153	+ 5545.792656	+ 5998.740150
7-54	- 150647.297	- 38595.841	+ 5399.094441	+ 4667.073336
7-17	- 150621.611	- 38599.764	+ 2071.219851	+ 4718.537908
			+ 42585.155580	+ 43281.744756
		倍面積	= 696.589176	
		面積	= 348.294588	

1 区切り

点 名	X	Y	(X-X0)*(YN-1-Y0)	(XN-1-X0)*(Y-Y0)
X0·Y0	- 150600.000	- 38600.000		
7-1	- 150627.364	- 38637.707		
7-8	- 150629.431	- 38637.448	+ 1109.754717	+ 1024.727072
7-9	- 150627.052	- 38635.647	+ 1013.043296	+ 1049.126857
7-1	- 150627.364	- 38637.707	+ 975.444508	+ 1020.049764
			+ 3098.242521	+ 3093.903693
		倍面積	= 4.338828	
		面積	= 2.169414	

2 区切り

点 名	X	Y	(X-X0)*(YN-1-Y0)	(XN-1-X0)*(Y-Y0)
X0·Y0	- 150600.000	- 38500.000		
7-2	- 150615.622	- 38560.280		
7-10	- 150615.969	- 38562.567	+ 962.611320	+ 977.421674
7-11	- 150618.007	- 38560.353	+ 1126.643969	+ 963.777057
7-2	- 150615.622	- 38560.280	+ 942.834566	+ 1085.461960
			+ 3032.089855	+ 3026.660691
		倍面積	= 5.429164	
		面積	= 2.714582	

* * * * * 各 筆 面 積 計 算 書 * * * * *

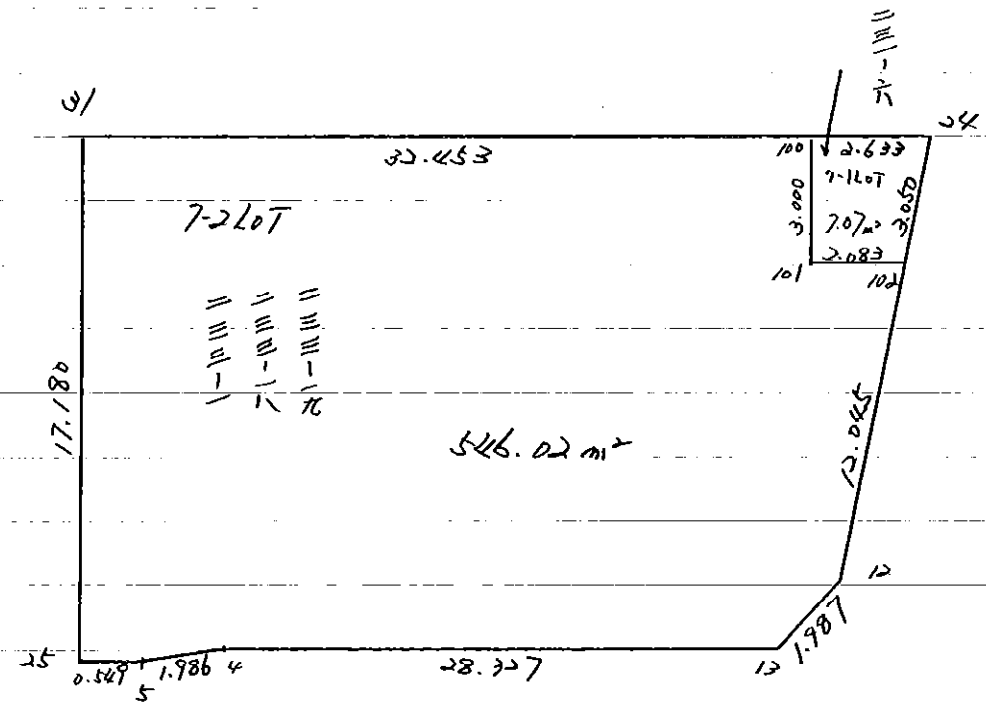
3 区

点 名	X	Y	(X-X0)*(YN-1-Y0)	(XN-1-X0)*(Y-Y0)
X0・Y0	- 150600.000	- 38500.000		
7-3	- 150687.759	- 38562.487		
7-12	- 150686.483	- 38562.448	+ 5404.063221	+ 5480.374032
7-13	- 150687.982	- 38563.752	+ 5494.299936	+ 5513.464216
7-3	- 150687.759	- 38562.487	+ 5594.811768	+ 5497.731234
			+ 16493.174925	+ 16491.569482
		倍面積	= 1.605443	
		面積	= 0.802721	

6 区

点 名	X	Y	(X-X0)*(YN-1-Y0)	(XN-1-X0)*(Y-Y0)
X0・Y0	- 150600.000	- 38600.000		
7-6	- 150699.779	- 38628.642		
7-14	- 150699.529	- 38627.235	+ 2850.709618	+ 2717.481065
7-15	- 150698.346	- 38628.821	+ 2678.453310	+ 2868.525309
7-6	- 150699.779	- 38628.642	+ 2875.730559	+ 2816.826132
			+ 8404.893487	+ 8402.832506
		倍面積	= 2.060981	
		面積	= 1.030490	

7 Block



* * * * 7-1 LOT

面積計算書

* * * * NO 1

点名	X	DX	DMD.1	Y	DY	DMD.2	DX * DMD.2	DY * DMD.1
7-24	- 150671.395			- 38561.986				
7-102	- 150674.444	+ 3.049	+ 3.049	- 38562.079	+ 0.093	+ 0.093	+ 0.283557	+ 0.283557
7-101	- 150674.756	+ 0.312	+ 6.410	- 38564.139	+ 2.060	+ 2.246	+ 0.700752	+ 13.204600
7-100	- 150671.790	- 2.966	+ 3.756	- 38564.589	+ 0.450	+ 4.756	+ 14.106296	+ 1.690200
7-24	- 150671.395	- 0.395	+ 0.395	- 38561.986	- 2.603	+ 2.603	- 1.028185	- 1.028185
		+ 3.361			+ 2.603		+ 0.984309	+ 15.178357
		- 3.361			- 2.603		- 15.134481	- 1.028185
							- 14.150172	+ 14.150172
						面積 =	7.075086	

* * * * 7-2 LOT

面積計算書 * * * * NO 1

点名	X	DX	DMD.1	Y	DY	DMD.2	DX * DMD.2	DY * DMD.1
7-102	- 150674.444			- 38562.079				
7-12	- 150686.483	+ 12.039	+ 12.039	- 38562.448	+ 0.369	+ 0.369	+ 4.442391	+ 4.442391
7-13	- 150687.982	+ 1.499	+ 25.577	- 38563.752	+ 1.304	+ 2.042	+ 3.060958	+ 33.352408
7-4	- 150692.905	+ 4.923	+ 31.999	- 38591.648	+ 27.896	+ 31.242	+ 153.804366	+ 892.644104
7-5	- 150693.545	+ 0.640	+ 37.562	- 38593.528	+ 1.880	+ 61.018	+ 39.051520	+ 70.616560
7-25	- 150693.641	+ 0.096	+ 38.298	- 38594.069	+ 0.541	+ 63.439	+ 6.090144	+ 20.719218
7-31	- 150676.660	- 16.981	+ 21.413	- 38596.675	+ 2.606	+ 66.586	- 1130.696866	+ 55.802278
7-100	- 150671.790	- 4.870	- 0.438	- 38564.589	- 32.086	+ 37.106	- 180.706220	+ 14.053668
7-101	- 150674.756	+ 2.966	- 2.342	- 38564.139	- 0.450	+ 4.570	+ 13.554620	+ 1.053900
7-102	- 150674.444	- 0.312	+ 0.312	- 38562.079	- 2.060	+ 2.060	- 0.642720	- 0.642720
		+ 22.163			+ 34.596		+ 220.003999	+ 1092.684527
		- 22.163			- 34.596		- 1312.045806	- 0.642720
							- 1092.041807	+ 1092.041807

面積 = 546.020903