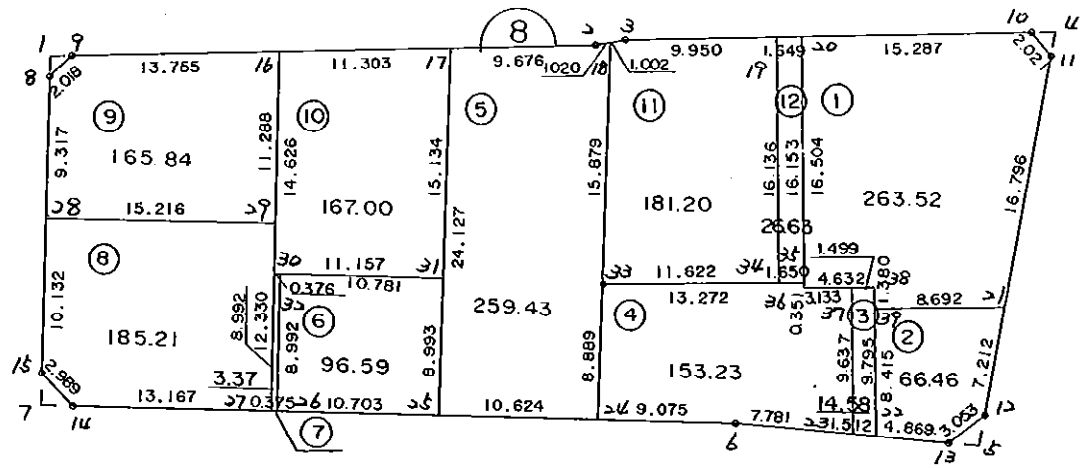


8 B L O C K



* * * 各筆面積 集計表 * * *

街区名・筆名	各筆面積	隔切面積
8 BLOCK	1583.15	
1 LOT	263.52	
2 LOT	66.46	
3 LOT	14.58	
4 LOT	153.23	
5 LOT	259.43	
6 LOT	96.59	
7 LOT	3.37	
8 LOT	185.21	
9 LOT	165.84	
10 LOT	167.00	
11 LOT	181.20	
12 LOT	26.63	
1 スミキリ		0.96
4 スミキリ		1.25
5 スミキリ		2.12
7 スミキリ		2.24
合計 =	1583.06	6.57

* * * * * 各 筆 面 積 計 算 書 * * * * *

8 BLOCK

点 名	X	Y	(X-X0)*(YN-1-Y0)	(XN-1-X0)*(Y-Y0)
X0·Y0	- 150600.000	- 38500.000		
8-8	- 150705.116	- 38627.987		
8-9	- 150703.516	- 38626.758	+ 13248.702292	+ 13324.293928
8-2	- 150697.452	- 38592.557	+ 12352.820616	+ 9581.130412
8-3	- 150696.787	- 38590.647	+ 8958.314359	+ 8833.731444
8-10	- 150692.107	- 38564.172	+ 8349.223229	+ 6211.015364
8-11	- 150693.443	- 38562.655	+ 5996.424196	+ 5770.964085
8-12	- 150717.440	- 38563.389	+ 7358.203200	+ 5923.258327
8-13	- 150719.642	- 38565.504	+ 7583.986738	+ 7692.789760
8-6	- 150720.525	- 38579.638	+ 7894.869600	+ 9528.049596
8-14	- 150726.249	- 38623.208	+ 10054.217862	+ 14849.644200
8-15	- 150724.414	- 38625.568	+ 15328.800112	+ 15852.834432
8-8	- 150705.116	- 38627.987	+ 13199.205888	+ 15923.374618
			+110324.768092	+113491.086166
		倍面積	= 3166.318074	
		面積	= 1583.159037	

1 LOT

点 名	X	Y	(X-X0)*(YN-1-Y0)	(XN-1-X0)*(Y-Y0)
X0·Y0	- 150600.000	- 38500.000		
8-20	- 150694.768	- 38579.225		
8-10	- 150692.107	- 38564.172	+ 7297.177075	+ 6081.452096
8-11	- 150693.443	- 38562.655	+ 5996.424196	+ 5770.964085
8-21	- 150710.231	- 38563.169	+ 6906.523305	+ 5902.700867
8-39	- 150711.645	- 38571.745	+ 7052.503005	+ 7908.523095
8-38	- 150710.284	- 38571.972	+ 7912.325580	+ 8035.313940
8-36	- 150711.052	- 38576.540	+ 7992.634544	+ 8441.137360
8-20	- 150694.768	- 38579.225	+ 7253.542720	+ 8798.094700
			+ 50411.130425	+ 50938.186143
		倍面積	= 527.055718	
		面積	= 263.527859	

2 LOT

点 名	X	Y	(X-X0)*(YN-1-Y0)	(XN-1-X0)*(Y-Y0)
X0·Y0	- 150700.000	- 38500.000		
8-21	- 150710.231	- 38563.169		
8-12	- 150717.440	- 38563.389	+ 1101.667360	+ 648.532859
8-13	- 150719.642	- 38565.504	+ 1245.086738	+ 1142.389760
8-22	- 150719.946	- 38570.364	+ 1306.542784	+ 1382.089688
8-39	- 150711.645	- 38571.745	+ 819.388780	+ 1431.025770
8-21	- 150710.231	- 38563.169	+ 734.023095	+ 735.603005
			+ 5206.708757	+ 5339.641082
		倍面積	= 132.932325	
		面積	= 66.466162	

* * * * * 各 筆 面 積 計 算 書 * * * * *

3 LOT

点 名	X	Y	(X-X0)*(YN-1-Y0)	(XN-1-X0)*(Y-Y0)
X0·Y0	- 150700.000	- 38500.000		
8-22	- 150719.946	- 38570.364		
8-23	- 150720.040	- 38571.873	+ 1410.094560	+ 1433.578858
8-37	- 150710.533	- 38573.450	+ 757.038309	+ 1471.938000
8-38	- 150710.284	- 38571.972	+ 755.359800	+ 758.081076
8-22	- 150719.946	- 38570.364	+ 1435.553512	+ 723.623376
			+ 4358.046181	+ 4387.221310
		倍面積	= 29.175129	
		面積	= 14.587564	

4 LOT

点 名	X	Y	(X-X0)*(YN-1-Y0)	(XN-1-X0)*(Y-Y0)
X0·Y0	- 150700.000	- 38500.000		
8-23	- 150720.040	- 38571.873		
8-6	- 150720.525	- 38579.638	+ 1475.193325	+ 1595.945520
8-24	- 150721.707	- 38588.636	+ 1728.702066	+ 1819.253900
8-33	- 150712.881	- 38589.690	+ 1141.720316	+ 1946.900830
8-35	- 150710.706	- 38576.597	+ 960.221140	+ 986.645957
8-36	- 150711.052	- 38576.540	+ 846.550044	+ 819.437240
8-37	- 150710.533	- 38573.450	+ 806.195820	+ 811.769400
8-23	- 150720.040	- 38571.873	+ 1471.938000	+ 757.038309
			+ 8430.520711	+ 8736.991156
		倍面積	= 306.470445	
		面積	= 153.235222	

5 LOT

点 名	X	Y	(X-X0)*(YN-1-Y0)	(XN-1-X0)*(Y-Y0)
X0·Y0	- 150600.000	- 38500.000		
8-24	- 150721.707	- 38588.636		
8-25	- 150723.091	- 38599.169	+ 10910.293876	+ 12069.561483
8-17	- 150699.141	- 38602.084	+ 9831.713829	+ 12565.621644
8-2	- 150697.452	- 38592.557	+ 9948.289968	+ 9176.193537
8-18	- 150697.116	- 38591.593	+ 8988.765612	+ 8925.921036
8-33	- 150712.881	- 38589.690	+ 10339.109433	+ 8710.334040
8-24	- 150721.707	- 38588.636	+ 10915.900830	+ 10005.320316
			+ 60934.073548	+ 61452.952056
		倍面積	= 518.878508	
		面積	= 259.439254	

6 LOT

点 名	X	Y	(X-X0)*(YN-1-Y0)	(XN-1-X0)*(Y-Y0)
X0·Y0	- 150700.000	- 38500.000		
8-25	- 150723.091	- 38599.169		
8-26	- 150724.485	- 38609.781	+ 2428.152965	+ 2534.953071

* * * * * 各 筆 面 積 計 算 書 * * * * *

点 名	X	Y	(X-X0)*(YN-1-Y0)	(XN-1-X0)*(Y-Y0)
8-32	- 150715.569	- 38610.945	+ 1709.180389	+ 2716.488325
8-31	- 150714.164	- 38600.256	+ 1571.424980	+ 1560.885664
8-25	- 150723.091	- 38599.169	+ 2315.011296	+ 1404.629716
			+ 8023.769630	+ 8216.956776
		倍面積	= 193.187146	
		面積	= 96.593573	

7 LOT

点 名	X	Y	(X-X0)*(YN-1-Y0)	(XN-1-X0)*(Y-Y0)
X0·Y0	- 150700.000	- 38600.000		
8-26	- 150724.485	- 38609.781		
8-27	- 150724.534	- 38610.153	+ 239.967054	+ 248.596205
8-30	- 150715.618	- 38611.318	+ 158.569554	+ 277.675812
8-32	- 150715.569	- 38610.945	+ 176.209942	+ 170.939010
8-26	- 150724.485	- 38609.781	+ 267.988325	+ 152.280389
			+ 842.734875	+ 849.491416
		倍面積	= 6.756541	
		面積	= 3.378270	

8 LOT

点 名	X	Y	(X-X0)*(YN-1-Y0)	(XN-1-X0)*(Y-Y0)
X0·Y0	- 150700.000	- 38600.000		
8-27	- 150724.534	- 38610.153		
8-14	- 150726.249	- 38623.208	+ 266.506097	+ 569.385072
8-15	- 150724.414	- 38625.568	+ 566.600112	+ 671.134432
8-28	- 150714.361	- 38626.828	+ 367.182048	+ 654.978792
8-29	- 150712.308	- 38611.751	+ 330.199024	+ 168.756111
8-27	- 150724.534	- 38610.153	+ 288.299034	+ 124.963124
			+ 1818.786315	+ 2189.217531
		倍面積	= 370.431216	
		面積	= 185.215608	

9 LOT

点 名	X	Y	(X-X0)*(YN-1-Y0)	(XN-1-X0)*(Y-Y0)
X0·Y0	- 150700.000	- 38600.000		
8-28	- 150714.361	- 38626.828		
8-8	- 150705.116	- 38627.987	+ 137.252048	+ 401.921307
8-9	- 150703.516	- 38626.758	+ 98.402292	+ 136.893928
8-16	- 150701.115	- 38613.214	+ 29.835170	+ 46.460424
8-29	- 150712.308	- 38611.751	+ 162.637912	+ 13.102365
8-28	- 150714.361	- 38626.828	+ 168.756111	+ 330.199024
			+ 596.883533	+ 928.577048
		倍面積	= 331.693515	
		面積	= 165.846757	

* * * * * 各 筆 面 積 計 算 書 * * * * *

10 LOT

点 名	X	Y	(X-X0)*(YN-1-Y0)	(XN-1-X0)*(Y-Y0)
X0·Y0	- 150600.000	- 38600.000		
8-16	- 150701.115	- 38613.214		
8-17	- 150699.141	- 38602.084	+ 1310.049174	+ 210.723660
8-31	- 150714.164	- 38600.256	+ 237.917776	+ 25.380096
8-30	- 150715.618	- 38611.318	+ 29.598208	+ 1292.108152
8-16	- 150701.115	- 38613.214	+ 1144.419570	+ 1527.776252
			+ 2721.984728	+ 3055.988160
		倍面積	= 334.003432	
		面積	= 167.001716	

11 LOT

点 名	X	Y	(X-X0)*(YN-1-Y0)	(XN-1-X0)*(Y-Y0)
X0·Y0	- 150600.000	- 38500.000		
8-18	- 150697.116	- 38591.593		
8-3	- 150696.787	- 38590.647	+ 8865.011691	+ 8803.274052
8-19	- 150695.055	- 38580.849	+ 8616.450585	+ 7825.132163
8-34	- 150710.976	- 38578.225	+ 8972.298624	+ 7435.677375
8-33	- 150712.881	- 38589.690	+ 8830.116225	+ 9953.437440
8-18	- 150697.116	- 38591.593	+ 8710.334040	+ 10339.109433
			+ 43994.211165	+ 44356.630463
		倍面積	= 362.419298	
		面積	= 181.209649	

12 LOT

点 名	X	Y	(X-X0)*(YN-1-Y0)	(XN-1-X0)*(Y-Y0)
X0·Y0	- 150600.000	- 38500.000		
8-19	- 150695.055	- 38580.849		
8-20	- 150694.768	- 38579.225	+ 7661.898032	+ 7530.732375
8-35	- 150710.706	- 38576.597	+ 8770.682850	+ 7258.944496
8-34	- 150710.976	- 38578.225	+ 8500.428672	+ 8659.976850
8-19	- 150695.055	- 38580.849	+ 7435.677375	+ 8972.298624
			+ 32368.686929	+ 32421.952345
		倍面積	= 53.265416	
		面積	= 26.632708	

1 区切り

点 名	X	Y	(X-X0)*(YN-1-Y0)	(XN-1-X0)*(Y-Y0)
X0·Y0	- 150700.000	- 38600.000		
8-1	- 150703.764	- 38628.157		
8-8	- 150705.116	- 38627.987	+ 144.051212	+ 105.343068

* * * * * 各 筆 面 積 計 算 書 * * * * *

点 名	X	Y	(X-X0)*(YN-1-Y0)	(XN-1-X0)*(Y-Y0)
8-9	- 150703.516	- 38626.758	+ 98.402292	+ 136.893928
8-1	- 150703.764	- 38628.157	+ 100.717112	+ 99.000012
			+ 343.170616	+ 341.237008
		倍面積	= 1.933608	
		面積	= 0.966804	

4 スミナリ

点 名	X	Y	(X-X0)*(YN-1-Y0)	(XN-1-X0)*(Y-Y0)
X0-Y0	- 150600.000	- 38500.000		
8-4	- 150691.830	- 38562.606		
8-10	- 150692.107	- 38564.172	+ 5766.450842	+ 5892.914760
8-11	- 150693.443	- 38562.655	+ 5996.424196	+ 5770.964085
8-4	- 150691.830	- 38562.606	+ 5753.608650	+ 5850.092458
			+ 17516.483688	+ 17513.971303
		倍面積	= 2.512385	
		面積	= 1.256192	

5 スミナリ

点 名	X	Y	(X-X0)*(YN-1-Y0)	(XN-1-X0)*(Y-Y0)
X0-Y0	- 150700.000	- 38500.000		
8-5	- 150719.514	- 38563.452		
8-12	- 150717.440	- 38563.389	+ 1106.602880	+ 1236.972946
8-13	- 150719.642	- 38565.504	+ 1245.086738	+ 1142.389760
8-5	- 150719.514	- 38563.452	+ 1278.245056	+ 1246.324184
			+ 3629.934674	+ 3625.686890
		倍面積	= 4.247784	
		面積	= 2.123892	

7 スミナリ

点 名	X	Y	(X-X0)*(YN-1-Y0)	(XN-1-X0)*(Y-Y0)
X0-Y0	- 150700.000	- 38600.000		
8-7	- 150726.524	- 38625.303		
8-14	- 150726.249	- 38623.208	+ 664.178447	+ 615.568992
8-15	- 150724.414	- 38625.568	+ 566.600112	+ 671.134432
8-7	- 150726.524	- 38625.303	+ 678.165632	+ 617.747442
			+ 1908.944191	+ 1904.450866
		倍面積	= 4.493325	
		面積	= 2.246662	